

Fatality Analysis Reporting System
General Estimates System

2007 DATA SUMMARY



CONTENTS

FARS and GES Data.....	1
Data Availability.....	2

EXHIBITS

1. 2007 Traffic Fatalities by State and Percent Change From 2006 ..	3
2. Crashes by Crash Severity, 1997-2007.....	4
3. Fatality and Injury Rates per Population and Vehicle Miles Traveled, 1997-2007	5
4. Vehicles Involved in Crashes by Vehicle Type and Crash Severity, 2007	6
5. Passenger Car Occupant Fatality and Injury Rates per Vehicle Miles Traveled, 1997-2007.....	7
6. Light Truck Occupant Fatality and Injury Rates per Vehicle Miles Traveled, 1997-2007.....	8
7. Large Truck Occupant Fatality and Injury Rates per Vehicle Miles Traveled, 1997-2007.....	9
8. Motorcyclist Fatality and Injury Rates per Vehicle Miles Traveled, 1997-2007.....	10
9. Fatalities in School Transportation Related Crashes, 1997-2007.....	11
10. Persons Killed, by Highest Driver Blood Alcohol Concentration in the Crash, 1992-2007.....	12
11. Persons Killed and Percent Alcohol-Impaired Driving During Holiday Periods, 1997-2007	13
12. Drivers in Fatal Crashes by Blood Alcohol Concentration and Sex, 1982-2007.....	14
13. Pedestrians Killed, 14 Years and Older, by Blood Alcohol Concentration, 1982-2007	15
14. Persons Killed, by Age and Highest Driver Blood Alcohol Concentration in the Crash, 2007.....	16
15. Age and Alcohol, 2007	17

EXHIBITS (continued)

16. Persons Killed or Injured, by Person Type and Injury Severity, 2007	18
17. Related Factors for Drivers and Motorcycle Riders Involved in Fatal Crashes, 2007.....	19
18. Vehicle Occupants Killed or Injured, by Age and Vehicle Type, 2007.....	20
19. Percent Rollover Occurrence by Vehicle Type and Crash Severity, 2007	21
20. Vehicle Occupants Killed or Injured, by Vehicle Type and Ejection, 2007	22
21. Occupants Killed or Injured in Two-Vehicle Crashes, by Vehicle Types Involved, 2007	23
22. Passenger Car and Light Truck Occupants Killed or Injured, by Age and Restraint Use, 2007	24
23. Persons Killed or Injured in Crashes Involving Large Trucks, 2007	25
24. Principal Impact Points in Two-Vehicle Fatal Crashes Involving Large Trucks, 2007	26
25. Speeding Drivers in Fatal Crashes by Age and Sex, 2007	27
26. Lives Saved, 1975-2007	28

FARS AND GES DATA

FARS, the Fatality Analysis Reporting System that became operational in 1975, contains data on a census of fatal traffic crashes within the 50 States, the District of Columbia, and Puerto Rico. To be included in FARS, a crash must involve a motor vehicle traveling on a trafficway customarily open to the public, and must result in the death of an occupant of a vehicle or a nonoccupant within 30 days of the crash.

The 2007 FARS data file used for the statistics in this report was created in June 2008. The updated final counts for 2006 are reflected in this report. The updated final counts for 2007 will be reflected in the 2008 report.

Data in the General Estimates System (GES) are obtained from a nationally representative probability sample selected from all police-reported crashes. The system began operation in 1988. To be eligible for the GES sample, a police accident report (PAR) must be completed for the crash, and the crash must involve at least one motor vehicle traveling on a trafficway and result in property damage, injury, or death.

The 2007 GES file used for the statistics in this report was completed in June 2008.

DATA AVAILABILITY

FARS and GES data can be obtained by downloading any of the published files from the Internet at <ftp://ftp.nhtsa.dot.gov/FARS> or <ftp://ftp.nhtsa.dot.gov/GES>. The files are available in SAS, sequential ASCII, and (for FARS only, not GES) DBS file formats. FARS data can also be accessed on the Web at www-fars.nhtsa.dot.gov. Requests for more information from FARS or GES or for a copy of the data files should be directed to:

National Highway Traffic Safety Administration
National Center for Statistics and Analysis, NVS-424
1200 New Jersey Avenue SE.
Washington, DC 20590
202-366-4198 or 800-934-8517,
or 202-366-7078 (Fax)

Requests for more information may also be submitted online via NCSA's Customer Automated Tracking System (CATS) at www-nrd.nhtsa.dot.gov/CATS.

Exhibit 1 - 2007 Traffic Fatalities by State and Percent Change From 2006

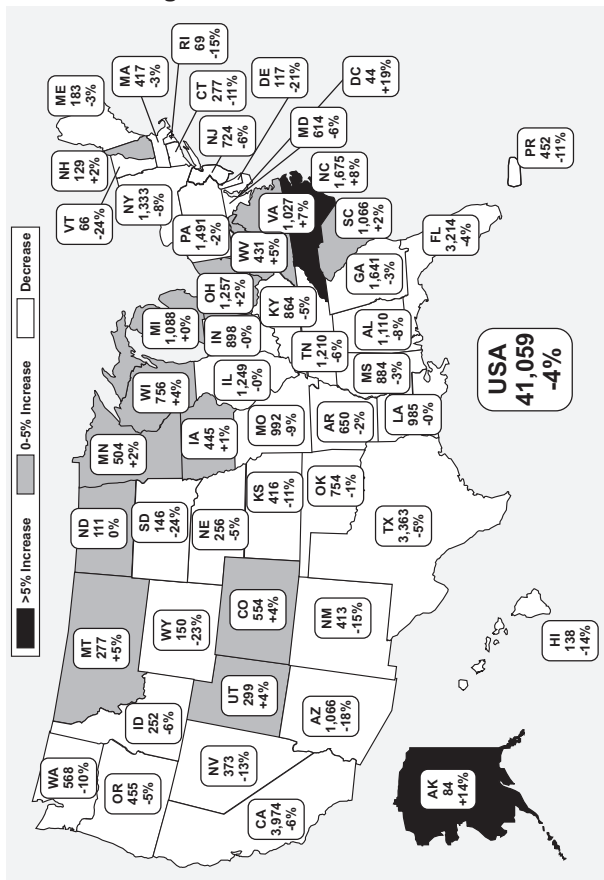


Exhibit 2 - **Crashes by Crash Severity, 1997-2007**

Year	Crash Severity			
	Fatal	Injury	Property Damage Only	Total
1997	37,324	2,149,000	4,438,000	6,624,000
1998	37,107	2,029,000	4,269,000	6,335,000
1999	37,140	2,054,000	4,188,000	6,279,000
2000	37,526	2,070,000	4,286,000	6,394,000
2001	37,862	2,003,000	4,282,000	6,323,000
2002	38,491	1,929,000	4,348,000	6,316,000
2003	38,477	1,925,000	4,365,000	6,328,000
2004	38,444	1,862,000	4,281,000	6,181,000
2005	39,252	1,816,000	4,304,000	6,159,000
2006	38,648	1,746,000	4,189,000	5,973,000
2007	37,248	1,711,000	4,275,000	6,024,000

Exhibit 3 - Fatality and Injury Rates per Population and Vehicle Miles Traveled, 1997-2007

Killed					
Year	Fatalities	Resident Population (Thousands)	Fatality Rate per 100,000 Population	Vehicle Miles Traveled (Billions)	Fatality Rate per 100 Million VMT
1997	42,013	267,784	15.69	2,562	1.64
1998	41,501	270,248	15.36	2,632	1.58
1999	41,717	272,691	15.30	2,691	1.55
2000	41,945	282,194	14.86	2,747	1.53
2001	42,196	285,112	14.80	2,797	1.51
2002	43,005	287,888	14.94	2,856	1.51
2003	42,884	290,448	14.76	2,890	1.48
2004	42,836	293,192	14.61	2,965	1.44
2005	43,510	295,896	14.70	2,989	1.46
2006	42,708	298,755	14.30	3,014	1.42
2007	41,059	301,621	13.61	3,030	1.36
Injured					
Year	Injured	Resident Population (Thousands)	Injury Rate per 100,000 Population	Vehicle Miles Traveled (Billions)	Injury Rate per 100 Million VMT
1997	3,348,000	267,784	1,250	2,562	131
1998	3,192,000	270,248	1,181	2,632	121
1999	3,236,000	272,691	1,187	2,691	120
2000	3,189,000	282,194	1,130	2,747	116
2001	3,033,000	285,112	1,064	2,797	108
2002	2,926,000	287,888	1,016	2,856	102
2003	2,889,000	290,448	995	2,890	100
2004	2,788,000	293,192	951	2,965	94
2005	2,699,000	295,896	912	2,989	90
2006	2,575,000	298,755	862	3,014	85
2007	2,491,000	301,621	826	3,030	82

Sources: Vehicle Miles Traveled—Federal Highway Administration; Population—U.S. Bureau of the Census.

Exhibit 4 - Vehicles Involved in Crashes by Vehicle Type and Crash Severity, 2007

Vehicle Type	Crash Severity										
	Fatal			Injury			Property Damage Only			Total	
	Number	Percent		Number	Percent		Number	Percent		Number	Percent
Passenger Car	22,716	40.6		1,708,000	55.8		4,014,000	54.0		5,745,000	54.5
Light Truck	21,686	38.8		1,163,000	37.9		3,007,000	40.5		4,192,000	39.7
Large Truck	4,584	8.2		76,000	2.5		333,000	4.5		413,000	3.9
Motorcycle	5,286	9.5		98,000	3.2		20,000	0.3		123,000	1.2
Bus	278	0.5		11,000	0.3		46,000	0.6		57,000	0.5
Other	661	1.2		9,000	0.3		11,000	0.1		20,000	0.2
Total	*55,926	100.0		3,064,000	100.0		7,431,000	100.0		10,551,000	100.0

*Includes 715 vehicles of unknown type involved in fatal crashes.

Exhibit 5 - Passenger Car Occupant Fatality and Injury Rates per Vehicle Miles Traveled, 1997-2007

Year	Vehicle Miles Traveled (Millions)	Passenger Car Occupants Killed	Fatality Rate per 100 Million VMT	Passenger Car Occupants Injured	Injury Rate per 100 Million VMT
1997	1,528,399	22,199	1.45	2,341,000	153
1998	1,555,901	21,194	1.36	2,201,000	141
1999	1,566,808	20,862	1.33	2,138,000	136
2000	1,580,735	20,699	1.31	2,052,000	130
2001	1,595,443	20,320	1.27	1,927,000	121
2002	1,611,860	20,569	1.28	1,805,000	112
2003	1,612,237	19,725	1.22	1,756,000	109
2004	1,628,266	19,192	1.18	1,643,000	101
2005	1,615,225	18,512	1.15	1,573,000	97
2006	1,614,564	17,925	1.11	1,475,000	91
2007	1,605,558	16,520	1.03	1,379,000	86

Source: Vehicle Miles Traveled—Federal Highway Administration, revised by NHTSA.

Exhibit 6 - Light Truck Occupant Fatality and Injury Rates per Vehicle Miles Traveled, 1997-2007

Year	Vehicle Miles Traveled (Millions)	Light Truck Occupants Killed	Fatality Rate per 100 Million VMT	Light Truck Occupants Injured	Injury Rate per 100 Million VMT
1997	824,896	10,249	1.24	755,000	92
1998	861,951	10,705	1.24	763,000	88
1999	903,314	11,265	1.25	847,000	94
2000	942,611	11,526	1.22	887,000	94
2001	976,096	11,723	1.20	861,000	88
2002	1,012,648	12,274	1.21	879,000	87
2003	1,043,936	12,546	1.20	889,000	85
2004	1,098,807	12,674	1.15	900,000	82
2005	1,134,247	13,037	1.15	872,000	77
2006	1,158,460	12,761	1.10	857,000	74
2007	1,176,713	12,413	1.05	841,000	72

Source: Vehicle Miles Traveled—Federal Highway Administration, revised by NHTSA.

Exhibit 7 - Large Truck Occupant Fatality and Injury Rates per Vehicle Miles Traveled, 1997-2007

Year	Vehicle Miles Traveled (Millions)	Large Truck Occupants Killed	Fatality Rate per 100 Million VMT	Large Truck Occupants Injured	Injury Rate per 100 Million VMT
1997	191,477	723	0.38	31,000	16
1998	196,380	742	0.38	29,000	15
1999	202,688	759	0.37	33,000	16
2000	205,520	754	0.37	31,000	15
2001	209,032	708	0.34	29,000	14
2002	214,603	689	0.32	26,000	12
2003	217,917	726	0.33	27,000	12
2004	220,792	766	0.35	27,000	12
2005	222,523	804	0.36	27,000	12
2006	222,513	805	0.36	23,000	10
2007	226,963	802	0.35	23,000	10

Source: Vehicle Miles Traveled—Federal Highway Administration.

Exhibit 8 - Motorcyclist Fatality and Injury Rates per Vehicle Miles Traveled, 1997-2007

Year	Vehicle Miles Traveled (Millions)	Motorcyclists Killed	Fatality Rate per 100 Million VMT	Motorcyclists Injured	Injury Rate per 100 Million VMT
1997	10,081	2,116	20.99	53,000	522
1998	10,283	2,294	22.31	49,000	476
1999	10,584	2,483	23.46	50,000	472
2000	10,469	2,897	27.67	58,000	551
2001	9,639	3,197	33.17	60,000	625
2002	9,552	3,270	34.23	65,000	677
2003	9,577	3,714	38.78	67,000	701
2004	10,122	4,028	39.79	76,000	755
2005	10,454	4,576	43.77	87,000	835
2006	12,049	4,837	40.14	88,000	727
2007	13,612	5,154	37.86	103,000	757

Source: Vehicle Miles Traveled—Federal Highway Administration.

Exhibit 9 - Fatalities in School Transportation Related Crashes, 1997-2007

Year	Occupants of School Transportation Vehicle*			Pedestrians			Other Non-occupants	Occupants of Other Vehicle	Total
	Driver	Passenger	Total	Struck by School Vehicle*	Struck by Other Vehicle	Total			
1997	5	5	10	17	2	19	5	97	131
1998	3	3	6	21	3	24	7	91	128
1999	6	4	10	20	6	26	4	127	167
2000	8	13	21	19	7	26	1	99	147
2001	6	12	18	18	4	22	6	95	141
2002	1	2	3	16	4	20	6	100	129
2003	6	5	11	22	5	27	2	100	140
2004	3	4	7	27	3	30	3	93	133
2005	5	5	10	27	3	30	7	87	134
2006	3	5	8	19	3	22	2	118	150
2007	4	1	5	15	2	18**	6	112	141
Total	50	59	109	221	42	264	49	1,119	1,541
Average	5	5	10	20	4	24	4	102	140

*Includes school bus body type and non-school bus used as school bus.

**Includes 1 pedestrian fatality for which the striking vehicle was not identified.

Exhibit 10 - Persons Killed, by Highest Driver Blood Alcohol Concentration in the Crash, 1992-2007

Year	BAC = .00		BAC = .01-.07		Alcohol-Impaired Driving Fatalities (BAC = .08+)		BAC = .01+		Total Fatalities	
	Number	Percent	Number	Percent	Number	Percent	Number	Percent	Number	Percent
1992	22,726	58	2,352	6	14,049	36	16,401	42	39,250	100
1993	23,979	60	2,300	6	13,739	34	16,039	40	40,150	100
1994	24,948	61	2,236	5	13,390	33	15,626	38	40,716	100
1995	25,768	62	2,416	6	13,478	32	15,893	38	41,817	100
1996	26,052	62	2,415	6	13,451	32	15,866	38	42,065	100
1997	26,902	64	2,216	5	12,757	30	14,973	36	42,013	100
1998	26,477	64	2,353	6	12,546	30	14,899	36	41,501	100
1999	26,798	64	2,235	5	12,555	30	14,790	35	41,717	100
2000	26,082	62	2,422	6	13,324	32	15,746	38	41,945	100
2001	26,334	62	2,441	6	13,290	31	15,731	37	42,196	100
2002	27,080	63	2,321	5	13,472	31	15,793	37	43,005	100
2003	27,328	64	2,327	5	13,096	31	15,423	36	42,884	100
2004	27,413	64	2,212	5	13,099	31	15,311	36	42,836	100
2005	27,423	63	2,404	6	13,582	31	15,985	37	43,510	100
2006	26,633	62	2,479	6	13,491	32	15,970	37	42,708	100
2007	25,555	62	2,388	6	12,998	32	15,387	37	41,059	100

Notes: Total fatalities include those in which there was no driver or motorcycle rider present. NHTSA estimates alcohol involvement when alcohol test results are unknown. Blood alcohol concentrations (BACs) measured in grams per deciliter (g/dL).

Exhibit 11 - Persons Killed and Percent Alcohol-Impaired Driving During Holiday Periods, 1997-2007

Year	Killed	Alcohol-Impaired Driving*	Killed	Alcohol-Impaired Driving*	Killed	Alcohol-Impaired Driving*
	Holiday Period**					
	New Year's Day		Memorial Day		Fourth of July	
1997	192 (1)	53%	511 (3)	40%	508 (3)	40%
1998	545 (4)	39%	393 (3)	40%	479 (3)	43%
1999	354 (3)	43%	500 (3)	42%	509 (3)	35%
2000	469 (3)	47%	466 (3)	46%	717 (4)	39%
2001	357 (3)	40%	515 (3)	44%	207 (1)	44%
2002	575 (4)	41%	494 (3)	37%	685 (4)	36%
2003	220 (1)	49%	481 (3)	37%	519 (3)	43%
2004	563 (4)	40%	514 (3)	38%	524 (3)	40%
2005	472 (3)	38%	532 (3)	39%	591 (3)	44%
2006	456 (3)	42%	511 (3)	40%	659 (4)	37%
2007	391 (3)	40%	491 (3)	38%	200 (1)	44%
	Labor Day		Thanksgiving		Christmas	
1997	507 (3)	42%	571 (4)	31%	480 (4)	33%
1998	464 (3)	40%	602 (4)	38%	364 (3)	41%
1999	485 (3)	38%	581 (4)	36%	485 (3)	41%
2000	529 (3)	43%	509 (4)	41%	442 (3)	40%
2001	481 (3)	40%	590 (4)	39%	604 (4)	39%
2002	543 (3)	45%	551 (4)	36%	131 (1)	40%
2003	507 (3)	38%	562 (4)	36%	520 (4)	37%
2004	502 (3)	38%	574 (4)	30%	389 (3)	38%
2005	507 (3)	40%	629 (4)	37%	402 (3)	40%
2006	508 (3)	37%	635 (4)	34%	395 (3)	42%
2007	519 (3)	40%	548 (4)	35%	468 (4)	36%

*Highest blood alcohol concentration (BAC) among drivers or motorcycle riders involved in the crash was .08 grams per deciliter (g/dL) or greater.

**The number of whole days in the holiday period is shown in parentheses. The length of the holiday period depends on the day on which the legal holiday falls, as follows: • If the holiday falls on *Monday*, the holiday period is from 6 p.m. Friday to 5:59 a.m. Tuesday. • If the holiday falls on *Tuesday*, the holiday period is from 6 p.m. Friday to 5:59 a.m. Wednesday. • If the holiday falls on *Wednesday*, the holiday period is from 6 p.m. Tuesday to 5:59 a.m. Thursday. • If the holiday falls on *Thursday*, the holiday period is from 6 p.m. Wednesday to 5:59 a.m. Monday. • If the holiday falls on *Friday*, the holiday period is from 6 p.m. Thursday to 5:59 a.m. Monday.

Exhibit 12 - Drivers in Fatal Crashes by Blood Alcohol Concentration and Sex, 1982-2007

Year	Male			Female		
	Total	Percent		Total	Percent	
		BAC = .01+	BAC = .08+		BAC = .01+	BAC = .08+
1982	44,370	44	38	10,675	27	22
1983	42,812	43	37	10,958	25	22
1984	44,723	41	35	11,907	25	20
1985	44,846	38	32	12,142	22	18
1986	46,653	40	33	12,744	22	17
1987	46,884	37	32	13,614	21	17
1988	47,402	37	31	13,951	20	16
1989	45,448	35	30	14,054	19	16
1990	44,281	37	32	13,726	20	16
1991	40,731	35	30	12,825	19	16
1992	38,598	33	28	12,596	18	15
1993	39,556	32	27	13,082	17	14
1994	40,233	30	26	13,567	17	14
1995	41,235	30	25	14,184	16	13
1996	41,376	29	25	14,850	16	13
1997	40,954	28	24	14,954	15	12
1998	40,816	28	23	15,089	15	12
1999	41,012	28	23	14,835	14	12
2000	41,795	29	24	14,790	16	13
2001	41,901	29	24	14,919	15	13
2002	42,377	29	25	14,999	15	12
2003	42,586	28	24	15,211	14	12
2004	42,250	28	24	15,384	15	12
2005	43,282	28	24	15,059	16	13
2006	42,223	29	24	14,753	18	15
2007	40,804	29	25	14,099	16	13

Notes: NHTSA estimates alcohol involvement when alcohol test results are unknown. Blood alcohol concentrations (BACs) measured in grams per deciliter (g/dL).

Exhibit 13 - Pedestrians Killed, 14 Years and Older, by Blood Alcohol Concentration, 1982-2007

Year	BAC = .00		BAC = .01-.07		BAC = .08+		Total	
	No.	%	No.	%	No.	%	No.	%
1982	3,132	51	321	5	2,701	44	6,154	100
1983	2,905	51	297	5	2,508	44	5,710	100
1984	3,159	53	283	5	2,465	42	5,907	100
1985	3,072	54	342	6	2,288	40	5,702	100
1986	3,104	54	334	6	2,264	40	5,702	100
1987	3,188	56	344	6	2,183	38	5,715	100
1988	3,364	58	287	5	2,173	37	5,825	100
1989	3,164	56	300	5	2,193	39	5,658	100
1990	3,185	57	260	5	2,150	38	5,595	100
1991	2,862	57	236	5	1,907	38	5,005	100
1992	2,712	56	231	5	1,868	39	4,812	100
1993	2,792	57	199	4	1,869	38	4,860	100
1994	2,782	59	230	5	1,725	36	4,737	100
1995	2,871	59	225	5	1,801	37	4,896	100
1996	2,749	58	212	4	1,816	38	4,777	100
1997	2,889	61	177	4	1,649	35	4,715	100
1998	2,743	59	248	5	1,689	36	4,680	100
1999	2,568	58	194	4	1,657	37	4,419	100
2000	2,535	59	213	5	1,541	36	4,288	100
2001	2,666	60	220	5	1,567	35	4,453	100
2002	2,670	60	193	4	1,589	36	4,451	100
2003	2,621	60	192	4	1,570	36	4,383	100
2004	2,563	60	208	5	1,535	36	4,306	100
2005	2,778	61	197	4	1,566	34	4,541	100
2006	2,580	58	222	5	1,661	37	4,463	100
2007	2,548	59	197	5	1,594	37	4,338	100

Notes: NHTSA estimates alcohol involvement when alcohol test results are unknown. Blood alcohol concentrations (BACs) measured in grams per deciliter (g/dL).

Exhibit 14 - Persons Killed, by Age and Highest Driver Blood Alcohol Concentration in the Crash, 2007

Age (Years)	Highest Driver BAC in Crash										Total	
	.00		.01-.07		.08 or Higher		.01 and Higher				No.	%
	No.	%	No.	%	No.	%	No.	%	No.	%	No.	%
<5	400	79	23	5	84	16	21	107	21	508	100	
5-9	385	82	18	4	67	14	18	85	18	470	100	
10-15	824	79	59	6	160	15	21	219	21	1,044	100	
16-20	3,416	64	371	7	1,529	29	36	1,900	36	5,338	100	
21-24	2,072	46	333	7	2,112	47	54	2,445	54	4,530	100	
25-34	3,256	48	466	7	3,049	45	52	3,515	52	6,796	100	
35-44	3,306	54	350	6	2,406	40	45	2,757	45	6,082	100	
45-54	3,755	61	343	6	2,022	33	39	2,365	39	6,130	100	
55-64	2,977	73	200	5	912	22	27	1,112	27	4,101	100	
65-74	2,130	82	108	4	359	14	18	468	18	2,602	100	
>74	2,949	89	110	3	262	8	11	372	11	3,330	100	
Unknown	84	66	8	6	36	28	34	44	34	128	100	
Total	25,555	62	2,388	6	12,998	32	37	15,387	37	41,059	100	

Notes: NHTSA estimates alcohol involvement when alcohol test results are unknown. Blood alcohol concentrations (BACs) measured in grams per deciliter (g/dL).

Exhibit 15 - **Age and Alcohol, 2007**

Age Group (years)	Drivers Involved in Fatal Crashes			Pedestrian Fatalities		
	Total	BAC = .08+		Total	BAC = .08+	
		No.	%		No.	%
<16	239	28	12	354	12	3
16-20	6,851	1,205	18	287	75	26
21-34	16,948	5,278	31	902	458	51
35-54	18,844	4,247	23	1,670	801	48
55-64	6,011	734	12	494	150	30
65+	5,880	344	6	903	100	11
Total	*55,681	12,068	22	**4,654	1,618	35

*Includes 908 drivers of unknown age.

**Includes 44 pedestrian fatalities of unknown age.

Notes: NHTSA estimates alcohol involvement when alcohol test results are unknown. Blood alcohol concentrations (BACs) measured in grams per deciliter (g/dL).

Exhibit 16 - **Persons Killed or Injured, by Person Type and Injury Severity, 2007**

Person Type	Persons Killed	Persons Injured by Injury Severity			Total Injured	Total Killed or Injured
		Incapacitating	Non-incapacitating	Other		
Vehicle Occupants						
Driver	21,647	168,000	423,000	981,000	1,571,000	1,593,000
Passenger	8,657	73,000	171,000	448,000	692,000	700,000
Unknown Occupant	97	*	*	*	1,000	1,000
<i>Subtotal</i>	30,401	241,000	594,000	1,429,000	2,264,000	2,294,000
Motorcyclists	5,154	29,000	48,000	26,000	103,000	108,000
Nonoccupants						
Pedestrian	4,654	17,000	26,000	28,000	70,000	75,000
Pedalcyclist	698	6,000	21,000	16,000	43,000	44,000
Other/Unknown	152	1,000	3,000	6,000	10,000	10,000
<i>Subtotal</i>	5,504	24,000	50,000	49,000	124,000	129,000
Total	41,059	294,000	692,000	1,504,000	2,491,000	2,532,000

*Less than 500.

Exhibit 17 - Related Factors for Drivers and Motorcycle Riders Involved in Fatal Crashes, 2007

Factors	Number	Percent
Failure to keep in proper lane or running off road	15,571	28.0
Driving too fast for conditions or in excess of posted speed limit or racing	11,948	21.5
Under the influence of alcohol, drugs, or medication	7,551	13.6
Inattentive (talking, eating, etc.)	4,704	8.4
Failure to yield right of way	4,004	7.2
Overcorrecting/oversteering	2,465	4.4
Failure to obey traffic signs, signals, or officer	2,423	4.4
Swerving or avoiding due to wind, slippery surface, vehicle, object, nonoccupant in roadway, etc.	2,106	3.8
Operating vehicle in erratic, reckless, careless, or negligent manner	1,857	3.3
Making improper turn	1,621	2.9
Vision obscured (rain, snow, glare, lights, building, trees, etc.)	1,481	2.7
Drowsy, asleep, fatigued, ill, or blackout	1,404	2.5
Driving wrong way on one-way trafficway or on wrong side of road	693	1.2
Other factors	9,303	16.7
None reported	19,030	34.2
Unknown	738	1.3
Total Drivers	55,681	100.0

Note: The sum of the numbers and percentages is greater than total drivers as more than one factor may be present for the same driver.

Exhibit 18 - Vehicle Occupants Killed or Injured, by Age and Vehicle Type, 2007

Age (Years)	Vehicle Type							Total
	Passenger Cars	Light Trucks	Large Trucks	Buses	Other/Unknown	Subtotal	Motorcycles	
Occupants Killed								
<5	201	184	3	0	4	392	1	393
5-9	152	176	2	0	16	346	1	347
10-15	393	328	2	0	40	763	31	794
16-20	3,010	1,530	9	4	77	4,630	360	4,990
21-24	2,199	1,294	31	1	81	3,606	591	4,197
25-34	2,655	2,129	116	5	112	5,017	1,075	6,092
35-44	1,865	1,908	200	4	94	4,071	1,128	5,199
45-54	1,705	1,918	216	5	88	3,932	1,119	5,051
55-64	1,316	1,333	154	10	42	2,855	639	3,494
65-74	1,083	812	54	6	35	1,990	163	2,153
>74	1,914	758	15	1	40	2,728	41	2,769
Unknown	27	43	0	1	0	71	5	76
Total	16,520	12,413	802	37	629	30,401	5,154	35,555
Occupants Injured								
<5	28,000	25,000	*	*	*	54,000	*	54,000
5-9	28,000	27,000	*	1,000	*	57,000	*	57,000
10-15	48,000	38,000	*	1,000	1,000	87,000	2,000	89,000
16-20	257,000	103,000	1,000	2,000	2,000	365,000	11,000	376,000
21-24	170,000	69,000	2,000	1,000	1,000	242,000	14,000	256,000
25-34	259,000	162,000	4,000	2,000	*	428,000	23,000	451,000
35-44	181,000	150,000	7,000	1,000	1,000	341,000	19,000	360,000
45-54	166,000	134,000	7,000	2,000	1,000	311,000	20,000	330,000
55-64	115,000	77,000	3,000	2,000	*	197,000	10,000	207,000
65-74	66,000	37,000	1,000	1,000	*	105,000	4,000	108,000
>74	60,000	18,000	*	*	*	78,000	*	78,000
Total	1,379,000	841,000	23,000	12,000	8,000	2,264,000	103,000	2,367,000

*Less than 500.

Exhibit 19 - Percent Rollover Occurrence by Vehicle Type and Crash Severity, 2007

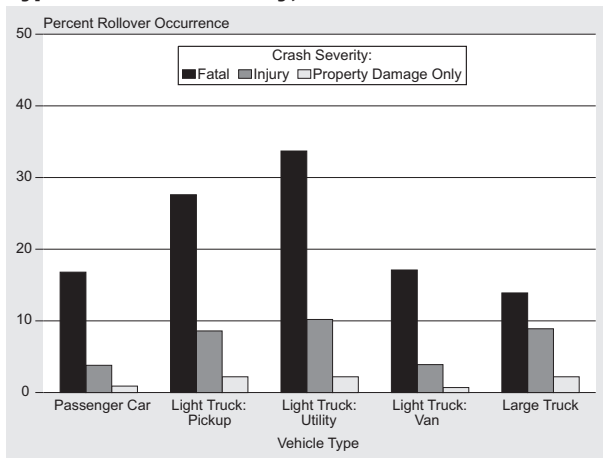


Exhibit 20 - **Vehicle Occupants Killed or Injured, by Vehicle Type and Ejection, 2007**

Vehicle Type	Ejected*		Not Ejected		Unknown		Total	
	Number	Percent	Number	Percent	Number	Percent	Number	Percent
Occupants Killed								
Passenger Car	3,313	20.1	13,155	79.6	52	0.3	16,520	100.0
Light Truck	4,756	38.3	7,604	61.3	53	0.4	12,413	100.0
Large Truck	237	29.6	558	69.6	7	0.9	802	100.0
Bus	18	48.6	19	51.4	0	0.0	37	100.0
Other/Unknown	281	44.7	319	50.7	29	4.6	629	100.0
Total**	8,605	28.3	21,655	71.2	141	0.5	30,401	100.0
Occupants Injured								
Passenger Car	6,000	0.4	1,373,000	99.6	****	****	1,379,000	100.0
Light Truck	12,000	1.4	830,000	98.6	****	****	841,000	100.0
Large Truck	***	1.0	23,000	99.0	****	****	23,000	100.0
Bus	***	***	12,000	100.0	****	****	12,000	100.0
Other/Unknown	2,000	31.1	5,000	68.9	****	****	8,000	100.0
Total**	20,000	0.9	2,244,000	99.1	****	****	2,264,000	100.0

*Includes total and partial ejection.

**Excludes motorcyclists.

***Less than 500.

****Not applicable.

Exhibit 21 - Occupants Killed or Injured in Two-Vehicle Crashes, by Vehicle Types Involved, 2007

Vehicle Types Involved				Total Occupants Killed
Vehicle Type	Occupants Killed	Vehicle Type	Occupants Killed	
Passenger Car	—	Passenger Car	—	2,154
Passenger Car	3,623	Light Truck	954	4,577
Passenger Car	1,436	Large Truck	43	1,479
Passenger Car	20	Motorcycle	1,002	1,022
Passenger Car	91	Bus	1	92
Passenger Car	68	Other/Unknown	53	121
Light Truck	—	Light Truck	—	1,765
Light Truck	1,177	Large Truck	48	1,225
Light Truck	3	Motorcycle	1,123	1,126
Light Truck	47	Bus	1	48
Light Truck	44	Other/Unknown	76	120
Large Truck	—	Large Truck	—	129
Large Truck	0	Motorcycle	184	184
Large Truck	3	Bus	4	7
Large Truck	2	Other/Unknown	28	30
Motorcycle	—	Motorcycle	—	106
Motorcycle	18	Bus	0	18
Motorcycle	53	Other/Unknown	2	55
Bus	—	Bus	—	2
Bus	0	Other/Unknown	3	3
Other/Unknown	—	Other/Unknown	—	30
Total Occupants Killed				14,293
Vehicle Types Involved				Total Occupants Injured
Vehicle Type	Occupants Injured	Vehicle Type	Occupants Injured	
Passenger Car	—	Passenger Car	—	496,000
Passenger Car	376,000	Light Truck	258,000	634,000
Passenger Car	37,000	Large Truck	4,000	41,000
Passenger Car	3,000	Motorcycle	25,000	28,000
Passenger Car	5,000	Bus	6,000	10,000
Passenger Car	2,000	Other/Unknown	2,000	5,000
Light Truck	—	Light Truck	—	233,000
Light Truck	20,000	Large Truck	4,000	24,000
Light Truck	2,000	Motorcycle	18,000	20,000
Light Truck	2,000	Bus	2,000	4,000
Light Truck	1,000	Other/Unknown	1,000	3,000
Large Truck	—	Large Truck	—	2,000
Total Occupants Injured				1,502,000

Exhibit 22 - Passenger Car and Light Truck Occupants Killed or Injured, by Age and Restraint Use, 2007

Age (Years)	Restraint Use						Total	
	Used		Not Used		Unknown			
	No.	%	No.	%	No.	%	No.	%
Occupants Killed								
<5	256	66.5	107	27.8	22	5.7	385	100.0
5-9	162	49.4	142	43.3	24	7.3	328	100.0
10-15	261	36.2	401	55.6	59	8.2	721	100.0
16-20	1,615	35.6	2,502	55.1	423	9.3	4,540	100.0
21-24	1,103	31.6	2,090	59.8	300	8.6	3,493	100.0
25-34	1,540	32.2	2,810	58.7	434	9.1	4,784	100.0
35-44	1,406	37.3	2,092	55.4	275	7.3	3,773	100.0
45-54	1,614	44.5	1,732	47.8	277	7.6	3,623	100.0
55-64	1,399	52.8	1,057	39.9	193	7.3	2,649	100.0
65-74	1,107	58.4	671	35.4	117	6.2	1,895	100.0
>74	1,775	66.4	748	28.0	149	5.6	2,672	100.0
Unknown	14	20.0	38	54.3	18	25.7	70	100.0
Total	12,252	42.3	14,390	49.7	2,291	7.9	28,933	100.0
Occupants Injured								
<5	48,000	89.3	3,000	6.1	2,000	4.6	53,000	100.0
5-9	48,000	86.1	4,000	6.4	4,000	7.5	55,000	100.0
10-15	73,000	85.2	8,000	9.9	4,000	4.9	86,000	100.0
16-20	292,000	81.2	41,000	11.3	27,000	7.5	360,000	100.0
21-24	195,000	81.4	24,000	10.1	20,000	8.5	240,000	100.0
25-34	350,000	83.0	38,000	8.9	34,000	8.1	422,000	100.0
35-44	286,000	86.2	22,000	6.7	23,000	7.0	332,000	100.0
45-54	264,000	88.1	15,000	4.9	21,000	6.9	300,000	100.0
55-64	173,000	89.8	8,000	4.2	12,000	6.1	193,000	100.0
65-74	94,000	91.4	4,000	3.9	5,000	4.6	103,000	100.0
>74	71,000	91.0	3,000	3.3	4,000	5.7	78,000	100.0
Total	1,894,000	85.3	170,000	7.6	157,000	7.1	2,221,000	100.0

Note: Restraint use is determined by police and may be overreported for survivors.

Exhibit 23 - Persons Killed or Injured in Crashes Involving Large Trucks, 2007

Killed	Number	Percentage of Total
Occupants of Large Trucks	802	17
<i>Single-Vehicle Crashes</i>	502	10
<i>Multiple-Vehicle Crashes</i>	300	6
Occupants of Other Vehicles in Crashes Involving Large Trucks	3,601	75
Nonoccupants (Pedestrians, Pedalcyclists, etc.)	405	8
Total	4,808	100
Injured	Number	Percentage of Total
Occupants of Large Trucks	23,000	23
<i>Single-Vehicle Crashes</i>	10,000	10
<i>Multiple-Vehicle Crashes</i>	13,000	13
Occupants of Other Vehicles in Crashes Involving Large Trucks	75,000	75
Nonoccupants (Pedestrians, Pedalcyclists, etc.)	2,000	2
Total	101,000	100

Exhibit 24 - Principal Impact Points in Two-Vehicle Fatal Crashes Involving Large Trucks, 2007

Impact Point on Large Truck	Impact Point on Other Vehicle				
	Front	Left Side	Right Side	Rear	Total
Front	28%	16%	13%	6%	63%
Left Side	9%	2%	1%	0%	11%
Right Side	6%	1%	0%	0%	7%
Rear	18%	1%	0%	0%	19%
Total	60%	19%	14%	6%	100%

Exhibit 25 - Speeding Drivers in Fatal Crashes by Age and Sex, 2007

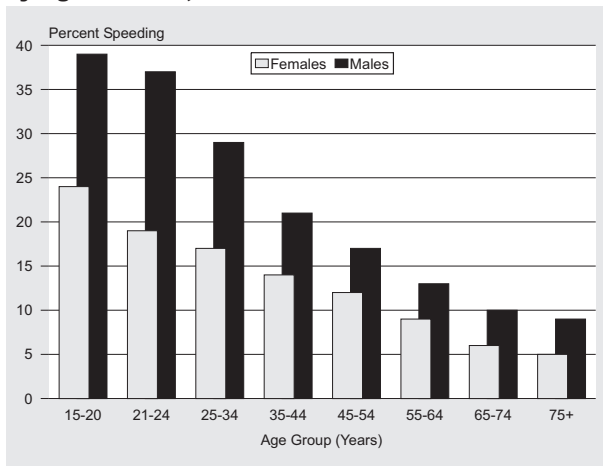


Exhibit 26 - **Lives Saved, 1975-2007**

Year	Lives Saved					Additional Lives That Would Have Been Saved at 100% Use	
	Passenger Vehicle Restraints			Motor-cycle Helmets	21-Year-Old Drinking Age*	Safety Belts	Motor-cycle Helmets
	Child Restraints	Safety Belts	Air Bags				
1975	36	978	0	823	412	13,301	1,164
1976	20	796	0	788	436	13,851	1,189
1977	35	682	0	970	474	14,460	1,472
1978	25	679	0	900	509	15,541	1,588
1979	49	594	0	885	575	15,726	1,676
1980	49	575	0	871	595	15,730	1,744
1981	69	548	0	843	633	15,222	1,667
1982	75	678	0	816	578	13,250	1,528
1983	105	809	0	735	609	12,913	1,450
1984	126	1,197	0	813	709	13,227	759
1985	153	2,435	0	788	701	12,508	764
1986	166	4,094	0	807	840	12,728	751
1987	213	5,141	2	667	1,071	12,678	697
1988	248	5,959	5	622	1,148	12,674	644
1989	238	6,333	8	561	1,093	12,256	553
1990	222	6,592	37	655	1,033	11,761	541
1991	253	6,838	71	595	941	10,812	467
1992	292	7,020	108	641	795	10,195	323
1993	313	7,773	190	671	816	10,212	336
1994	420	9,219	309	625	848	9,507	339
1995	408	9,882	536	624	851	9,781	326
1996	480	10,710	783	617	846	9,459	324
1997	444	11,259	973	627	846	9,096	315
1998	438	11,680	1,208	660	861	8,690	369
1999	447	11,941	1,491	745	901	8,809	396
2000	479	12,882	1,716	872	922	8,245	478
2001	388	13,295	1,978	947	927	8,016	558
2002	383	14,264	2,324	992	922	6,837	576
2003	447	15,095	2,519	1,173	918	6,151	651
2004	455	15,548	2,660	1,324	927	5,874	673
2005	424	15,688	2,752	1,554	882	5,667	731
2006	427	15,458	2,824	1,667	888	5,468	756
2007	382	15,147	2,788	1,784	826	5,024	800
Total	8,709	241,789	25,282	28,662	26,333	355,669	26,605

*Estimated reductions in deaths that resulted from the presence of laws establishing a minimum legal age of 21 years for the consumption of alcoholic beverages.

NOTES



U.S. Department
of Transportation

**National Highway
Traffic Safety
Administration**

