

REPORT NO. 118-KAR-07-001

**SAFETY COMPLIANCE TESTING
FOR FMVSS 118**

**Power-Operated Window, Partition,
And Roof Panel Systems**

2007 PONTIAC G6 GT
2-DOOR COUPE

NHTSA NO. C70120

PREPARED BY:
KARCO ENGINEERING, LLC.
9270 HOLLY ROAD
ADELANTO, CALIFORNIA 92301



October 03, 2007

Final Report

PREPARED FOR:
U.S. DEPARTMENT OF TRANSPORTATION
NATIONAL HIGHWAY TRAFFIC SAFETY ADMINISTRATION
ENFORCEMENT
OFFICE OF VEHICLE SAFETY COMPLIANCE
MAIL CODE: NVS-221
1200 NEW JERSEY AVE SE, ROOM W43-498
WASHINGTON, D.C. 20590

This final test report was prepared for the U.S. Department of Transportation, National Highway Traffic Safety Administration, under Contract DTNH22-06-C-00034.

This publication is distributed by the U.S. Department of Transportation, National Highway Traffic Safety Administration in the interest of information exchange. The opinions, findings and conclusions expressed in this publication are those of the author(s) and not necessarily those of the Department of Transportation or the National Highway Traffic Safety Administration. The United States Government assumes no liability for its contents or use thereof. If trade or manufacturers' names or products are mentioned, it is only because they are considered essential to the object of the publication and should not be construed as an endorsement. The United States Government does not endorse products or manufacturers.

Prepared by: Matthew S. Hubbard Date: 10-03-07
Mr. Matthew S. Hubbard, Test Engineer
KARCO Engineering, LLC.

Reviewed by: [Signature] Date: 10-03-07
Mr. Michael L. Dunlap, Director of Operations
KARCO Engineering, LLC.

Approved by: Frank D. Richardson Date: 10-03-07
Mr. Frank D. Richardson, Program Manager
KARCO Engineering, LLC.

FINAL REPORT ACCEPTED BY OVSC
Accepted By: [Signature]
Acceptance Date: 11/02/07

Technical Report Documentation Page

1. <i>Report No.</i> 118-KAR-07-001	2. <i>Government Accession No.</i>	3. <i>Recipient's Catalog No.</i>	
4. <i>Title and Subtitle</i> Final Report of FMVSS 118 Compliance Testing of 2007 Pontiac G6 GT 2-Door Coupe, NHTSA NO. C70120		5. <i>Report Date</i> 10-03-07	
		6. <i>Performing Organization Code</i> KAR	
7. <i>Author(s)</i> Mr. Matthew S. Hubbard, Test Engineer, KARCO Mr. Michael L. Dunlap, Director of Operations, KARCO		8. <i>Performing Organization Report No.</i> TR-P27009-01-NC	
9. <i>Performing Organization Name and Address</i> KARCO Engineering 9270 Holly Road Adelanto, California 92301		10. <i>Work unit No.</i>	
		11. <i>Contract or Grant No.</i> DTNH22-06-C-00034	
12. <i>Sponsoring Agency Name and Address</i> U.S. Department of Transportation National Highway Traffic Safety Administration Enforcement Office of Vehicle Safety Compliance Mail Code: NVS-221 1200 New Jersey Ave SE, Room W43-410 Washington, D.C. 20590		13. <i>Type of report and Period Covered</i> Final Report- October 03, 2007	
		14. <i>Sponsoring Agency Code</i> NVS-221	
15. <i>Supplementary Notes</i>			
16. <i>Abstract</i> Compliance tests were conducted on the subject 2007 Pontiac G6 GT 2-Door Coupe in accordance with the specifications of the Office of Vehicle Safety Compliance Test Procedure No. TP118-05 for the determination of FMVSS 118 compliance. Test failures identified were as follows: None			
17. <i>Key Words</i> Compliance Testing Safety Engineering FMVSS 118		18. <i>Distribution Statement</i> Copies of this report are available from: National Highway Traffic Safety Admin. Technical Information Services (TIS) Mail Code: NVS-221 1200 New Jersey Ave SE, Room W43-410 Washington, D.C. 20590	
19. <i>Security Classification (of this report)</i> UNCLASSIFIED	20. <i>Security Classification (of this page)</i> UNCLASSIFIED	21. <i>No. of Pages</i> 41	22. <i>Price</i>

Form DOT F1700.7 (8-72)

TABLE OF CONTENTS

<u>Section</u>		<u>Page</u>
1	Purpose of Compliance Test	1
2	Test Procedure and Data Summary	2
3	Test Data	5
4	Photographs	15
5	Data Plots	28
6	Copy of Owner's Manual Instructions for Use of Power Windows	29

1. PURPOSE OF COMPLIANCE TEST

Tests were conducted on a 2007 Pontiac G6 GT 2-Door Coupe, manufactured by General Motors Corporation to determine compliance with FMVSS 118 "Power-Operated Window, Partition, and Roof Panel Systems". FMVSS 118 specifies requirements for power operated window, partition and roof panel systems to minimize the likelihood of death or injury from their accidental operation.

All tests were conducted based on the current National Highway Traffic Safety Administration (NHTSA), Office of Vehicle Safety Compliance (OVSC) Laboratory Procedures, TP-118-05, dated March 24, 2005, and corresponding KARCO Engineering test procedure KTP-118, dated March 16, 2004. Detailed procedures for receiving, inspecting, testing and reporting of test results are described in the test procedures and are not repeated in this report.

2. TEST PROCEDURE AND DATA SUMMARY

A 2007 Pontiac G6 GT 2-Door Coupe was subjected to FMVSS 118 compliance testing. The tests were conducted at KARCO Engineering in Adelanto, California on October 03, 2007. FMVSS 118 Compliance testing was performed in the following sequence:

- Vehicle Receiving Photographs
- Test Vehicle Check-in
- Power Window, Partitions and Roof Panel Identification/Documentation
- Interior, Exterior and Remote Control Switch Identification/Documentation
- Pre-Test Operation of all Power Windows, Partitions and Roof Panels
- Photograph Vehicle Ignition Switch and Master and Individual Power Window, Partition and Roof Panel Switches
- Perform Ignition Switch off Test
- Perform Ignition Key Removed Test
- Perform Exterior Key Locking System Test
- Perform Remote Control System Test
- Perform Reversal System Test

DATA SUMMARY

VEHICLE			
YEAR	2007	MAKE	Pontiac
MODEL	G6 GT	BODY STYLE	2-Door Coupe
NHTSA NO.	C70120	VIN	1G2ZH18N274149507
TEST DATE:	10/03/07		

SWITCH ACTUATION

WINDOWS, PARTITIONS, ROOF PANEL SWITCHES	INTERIOR KEY LOCKING SYSTEM		EXTERIOR LOCKING SYSTEM (PASS / FAIL)
	IGNITION KEY OFF (PASS/FAIL)	IGNITION KEY REMOVED (PASS/FAIL)	
MASTER SWITCH PANEL			
Left Front (LF)	PASS	PASS	N/A
Right Front (RF)	PASS	PASS	N/A
Left Rear (LR)	N/A	N/A	N/A
Right Rear (RR)	N/A	N/A	N/A
Tail Gate (TG)	N/A	N/A	N/A
Partition	N/A	N/A	N/A
Roof Panel (RP)	N/A	N/A	N/A
INDIVIDUAL SWITCHES			
Left Front (LF)	PASS	PASS	N/A
Right Front (RF)	PASS	PASS	N/A
Left Rear (LR)	N/A	N/A	N/A
Right Rear (RR)	N/A	N/A	N/A
Tail Gate (TG)	N/A	N/A	N/A
Partition (P)	N/A	N/A	N/A
Roof Panel (RP)	PASS	PASS	N/A

REMARKS: The master switch control panel is located on the driver's side door panel and includes the individual left front window switch. Vehicle passed as soon as ignition "off" test was performed.

This vehicle is equipped with a window indexing feature that allows the windows to be rolled down a small amount (23mm) with door opening, and window rolls up upon door closing. This opening does not allow the top of the window to be separated from the window seal to allow anything to be placed in the gap.

DATA SUMMARY...(CONTINUED)

REMOTE ACTUATION DEVICE

VEHICLE ORIENTATION REMOTE ACTUATION DEVICE	NON-LINE OF SIGHT REMOTE (METERS)	LINE OF SIGHT REMOTE (METERS)
FRONT	N/A	N/A
DRIVER SIDE	N/A	N/A
PASSENGER SIDE	N/A	N/A
REAR	N/A	N/A

WPRP OBSTRUCTION FORCE REVERSAL

WINDOW, PARTITION, ROOF PANEL	FORCE TO REVERSE (NEWTONS)	DISTANCE WINDOW, PARTITION, OR ROOF PANEL OPENED ON REVERSAL (mm)
LEFT FRONT (LF)	N/A	N/A
RIGHT FRONT (RF)	N/A	N/A
LEFT REAR (LR)	N/A	N/A
RIGHT REAR (RR)	N/A	N/A
PARTITION (P)	N/A	N/A
ROOF PANEL (RP)	N/A	N/A
TAIL GATE (TG)	N/A	N/A

REMARKS: This vehicle is not equipped with automatic power window up feature. This vehicle is not equipped with a remote actuation device that allows the windows to be opened.

The subject 2007 Pontiac G6 GT 2-Door Coupe appeared to meet the requirements of FMVSS 118.

3. TEST DATA

**DATA SHEET NO. 2
IGNITION KEY OFF TEST**

VEHICLE			
YEAR	2007	MAKE	Pontiac
MODEL	G6 GT	BODY STYLE	2-Door Coupe
NHTSA NO.	C70120	VIN	1G2ZH18N274149507
TEST DATE:	10/03/07		

Pre-Test Check: Window, Partition, Roof Panel Systems operate with Ignition Switch in "ON" Position		YES	X	NO			
Pre-Test Check: Window, Partition, Roof Panel Systems operate with Ignition Switch in "ACCESSORY" Position		YES		NO	X		
WINDOW SWITCHES	DOORS CLOSED		LEFT DOOR OPEN		RIGHT DOOR OPEN		PASS/FAIL
	INOP.	OPER.	INOP.	OPER.	INOP.	OPER.	
MASTER							
Left Front (LF)	N/A	X	X	N/A	X	N/A	PASS
Right Front (RF)	N/A	X	X	N/A	X	N/A	PASS
Left Rear (LR)	N/A	N/A	N/A	N/A	N/A	N/A	N/A
Right Rear (RR)	N/A	N/A	N/A	N/A	N/A	N/A	N/A
Tail Gate (TG)	N/A	N/A	N/A	N/A	N/A	N/A	N/A
Partition (P)	N/A	N/A	N/A	N/A	N/A	N/A	N/A
Roof Panel (RP)	N/A	X	X	N/A	X	N/A	PASS
INDIVIDUAL							
Left Front (LF)	N/A	X	X	N/A	X	N/A	PASS
Right Front (RF)	N/A	X	X	N/A	X	N/A	PASS
Left Rear (LR)	N/A	N/A	N/A	N/A	N/A	N/A	N/A
Right Rear (RR)	N/A	N/A	N/A	N/A	N/A	N/A	N/A
Tail Gate (TG)	N/A	N/A	N/A	N/A	N/A	N/A	N/A
Partition (P)	N/A	N/A	N/A	N/A	N/A	N/A	N/A
Roof Panel (RP)	N/A	X	X	N/A	X	N/A	PASS
REMARKS:	The master left front switch is the same as the individual left front switch. Test was performed with key in the "Lock" position. For the pre-test check in the "Accessory" position the key was moved from the "Lock" position to the "Accessory" position without cycling through the "On" position or starting the engine. Vehicle passed as soon as ignition "off" test was performed.						

RECORDED BY: **MATTHEW S. HUBBARD** DATE: **10/03/07**
 APPROVED BY: **MICHAEL L. DUNLAP** DATE: **10/03/07**

**DATA SHEET NO. 3
IGNITION KEY REMOVED TEST**

VEHICLE			
YEAR	2007	MAKE	Pontiac
MODEL	G6 GT	BODY STYLE	2-Door Coupe
NHTSA NO.	C70120	VIN	1G2ZH18N274149507
TEST DATE:	10/03/07		

WINDOW SWITCHES	DOORS CLOSED		LEFT DOOR OPEN		RIGHT DOOR OPEN		PASS/FAIL
	INOP.	OPER.	INOP.	OPER.	INOP.	OPER.	
MASTER							
Left Front (LF)	N/A	X	X	N/A	X	N/A	PASS
Right Front (RF)	N/A	X	X	N/A	X	N/A	PASS
Left Rear (LR)	N/A	N/A	N/A	N/A	N/A	N/A	N/A
Right Rear (RR)	N/A	N/A	N/A	N/A	N/A	N/A	N/A
Tail Gate (TG)	N/A	N/A	N/A	N/A	N/A	N/A	N/A
Partition (P)	N/A	N/A	N/A	N/A	N/A	N/A	N/A
Roof Panel (RP)	N/A	X	X	N/A	X	N/A	PASS
INDIVIDUAL							
Left Front (LF)	N/A	X	X	N/A	X	N/A	PASS
Right Front (RF)	N/A	X	X	N/A	X	N/A	PASS
Left Rear (LR)	N/A	N/A	N/A	N/A	N/A	N/A	N/A
Right Rear (RR)	N/A	N/A	N/A	N/A	N/A	N/A	N/A
Tail Gate (TG)	N/A	N/A	N/A	N/A	N/A	N/A	N/A
Partition (P)	N/A	N/A	N/A	N/A	N/A	N/A	N/A
Roof Panel (RP)	N/A	X	X	N/A	X	N/A	PASS

REMARKS: The master left front switch is the same as the individual left front switch. Vehicle passed as soon as ignition "off" test was performed.

RECORDED BY: **MATTHEW S. HUBBARD**

DATE: **10/03/07**

APPROVED BY: **MICHAEL L. DUNLAP**

DATE: **10/03/07**

**DATA SHEET NO. 4
EXTERIOR KEY LOCKING SYSTEM**

VEHICLE			
YEAR	2007	MAKE	Pontiac
MODEL	G6 GT	BODY STYLE	2-Door Coupe
NHTSA NO.	C70120	VIN	1G2ZH18N274149507
TEST DATE:	10/03/07		

EXTERIOR LOCKING CONTROL SWITCH TEST				
Can Any WPRP Be Operated by Directly Using A Key in an Exterior Locking Control Switch?	Yes	N/A	No	X
If Yes: Is Continuous Activation of the Switch Required	Yes	N/A	No	X

IDENTIFY WINDOW, PARTITION AND ROOF PANEL POSITIONS WHICH ARE OPERABLE WITH EXTERIOR KEY.

LOCATION	OPERABLE W/KEY		CONTINUOUS ACTION		PASS / FAIL
	YES	NO	YES	NO	
LEFT FRONT (LF)	N/A	N/A	N/A	N/A	N/A
RIGHT FRONT (RF)	N/A	N/A	N/A	N/A	N/A
LEFT REAR (LR)	N/A	N/A	N/A	N/A	N/A
RIGHT REAR (RR)	N/A	N/A	N/A	N/A	N/A
PARTITION (P)	N/A	N/A	N/A	N/A	N/A
ROOF PANEL (RP)	N/A	N/A	N/A	N/A	N/A
TAIL GATE (TG)	N/A	N/A	N/A	N/A	N/A

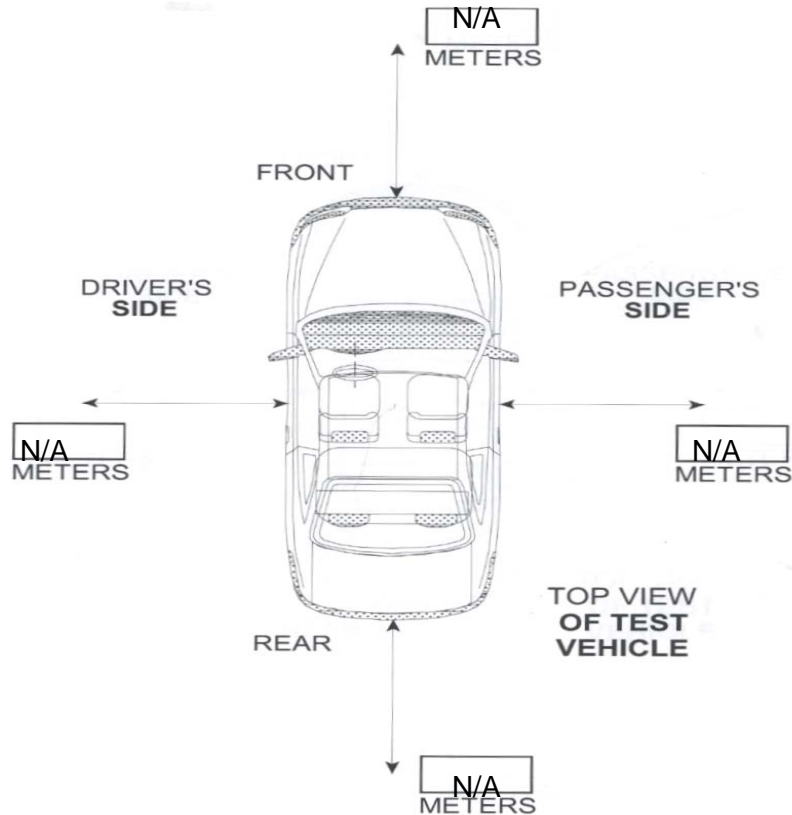
REMARKS: Vehicle is not equipped with an exterior key locking system capable of opening windows.

RECORDED BY: MATTHEW S. HUBBARD DATE: 10/03/07
 APPROVED BY: MICHAEL L. DUNLAP DATE: 10/03/07

**DATA SHEET NO. 5
MAXIMUM OPERATING RANGE FOR LINE-OF-SIGHT REMOTE**

VEHICLE			
YEAR	2007	MAKE	Pontiac
MODEL	G6 GT	BODY STYLE	2-Door Coupe
NHTSA NO.	C70120	VIN	1G2ZH18N274149507
TEST DATE:	10/03/07		

If range of operation exceeds 11 meters in any of the below measured directions, the window, partition, and roof panel must meet the reversing requirements of FMVSS 118. Continuous activation of remote device is required to close windows, partition and roof panel YES () NO ().



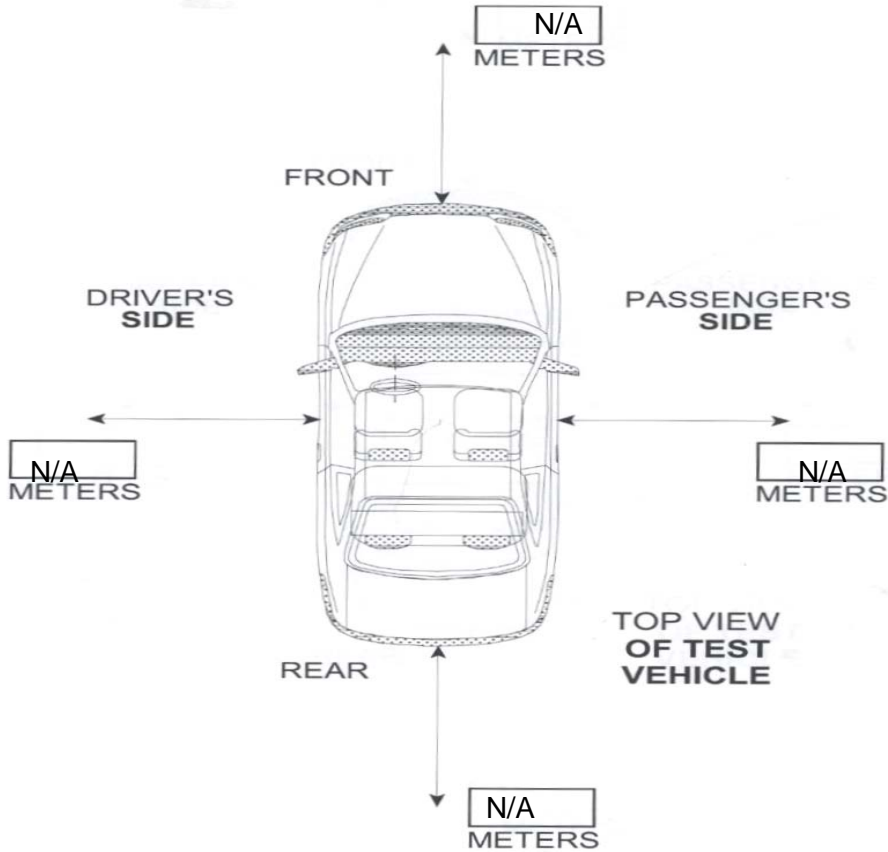
REMARKS: The vehicle is not equipped with a remote actuation device that allows the windows to be opened.

RECORDED BY: **MATTHEW S. HUBBARD** DATE: **10/03/07**
 APPROVED BY: **MICHAEL L. DUNLAP** DATE: **10/03/07**

**DATA SHEET NO. 6
MAXIMUM OPERATING RANGE FOR NON-LINE-OF-SIGHT REMOTE**

VEHICLE			
YEAR	2007	MAKE	Pontiac
MODEL	G6 GT	BODY STYLE	2-Door Coupe
NHTSA NO.	C70120	VIN	1G2ZH18N274149507
TEST DATE:	10/03/07		

If range of operation exceeds 6 meters in any of the below measured directions, the window, partition, and roof panel must meet the reversing requirements of FMVSS 118. Continuous activation of remote device is required to close windows, partition and roof panel YES () NO ().



REMARKS: The vehicle is not equipped with a remote actuation device that allows the windows to be opened.

RECORDED BY: MATTHEW S. HUBBARD DATE: 10/03/07
 APPROVED BY: MICHAEL L. DUNLAP DATE: 10/03/07

**DATA SHEET NO. 7
AUTO REVERSAL**

VEHICLE			
YEAR	2007	MAKE	Pontiac
MODEL	G6 GT	BODY STYLE	2-Door Coupe
NHTSA NO.	C70120	VIN	1G2ZH18N274149507
TEST DATE:	10/03/07		

IDENTIFY WINDOW, PARTITION AND ROOF PANEL POSITIONS WHICH ARE EQUIPPED WITH AUTO REVERSAL.

Is vehicle equipped with Auto Reversal	YES		NO	X
--	-----	--	----	---

SWITCHES EQUIPPED WITH AUTO REVERSAL	MASTER	INDIVIDUAL
LEFT FRONT (LF)	N/A	N/A
RIGHT FRONT (RF)	N/A	N/A
LEFT REAR (LR)	N/A	N/A
RIGHT REAR (RR)	N/A	N/A
PARTITION (P)	N/A	N/A
ROOF PANEL (RP)	N/A	N/A
TAIL GATE (TG)	N/A	N/A

REMARKS: On this vehicle there are no windows equipped with the auto reversal feature. The reversal feature is not required because the window appears to meet the operational requirements of FMVSS 118 paragraph S.4.

RECORDED BY: MATTHEW S. HUBBARD DATE: 10/03/07
 APPROVED BY: MICHAEL L. DUNLAP DATE: 10/03/07

4. PHOTOGRAPHS

Figure 1	Frontal $\frac{3}{4}$ View from Right Side of Vehicle	16
Figure 2	Rear $\frac{3}{4}$ View from Left Side of Vehicle	17
Figure 3	Vehicle Certification Label	18
Figure 4	Tire Information Placard	19
Figure 5	Ignition Switch	20
Figure 6	Left Front Master Power Window Switch	21
Figure 7	Right Front Power Window Switch	22
Figure 8	Sunroof Power Window Switch	23
Figure 9	Overall Test Set-Up	24
Figure 10	Test Window With Window Indexing Down	25
Figure 11	Displacement of Window Indexing	26
Figure 12	Displacement of Window Indexing on Upper Door Seal	27



Figure 1: Frontal ¾ View From Right Side of Vehicle

2007 PONTIAC G6 GT
NHTSA NO. C70120
FMVSS NO. 118



Figure 2: Rear ¾ View From Left Side of Vehicle

2007 PONTIAC G6 GT
NHTSA NO. C70120
FMVSS NO. 118

GM MFD BY GENERAL MOTORS CORP

DATE	GVWR	GAWR FRT	GAWR RR
09/06	1937 KG	1092 KG	845 KG
	4270 LB	2408 LB	1862 LB

THIS VEHICLE CONFORMS TO ALL APPLICABLE U.S. FEDERAL MOTOR VEHICLE SAFETY, BUMPER, AND THEFT PREVENTION STANDARDS IN EFFECT ON THE DATE OF MANUFACTURE SHOWN ABOVE.

1G2ZH18N274149507 TYPE: PASS CAR

2007 PONTIAC G6 GT
 NHTSA NO. C70120
 FMVSS NO. 118

Figure 3: Vehicle Certification Label

1G2ZH18N274149507

TIRE AND LOADING INFORMATION



SEATING CAPACITY | TOTAL 4 | FRONT 2 | REAR 2

The combined weight of occupants and cargo should never exceed 336 kg or 741 lbs.

TIRE	ORIGINAL SIZE	COLD TIRE PRESSURE
FRONT	P225/50R17 V	210 kPa, 30 PSI
REAR	P225/50R17 V	210 kPa, 30 PSI
SPARE	T125/70R16 M	420 kPa, 60 PSI

SEE OWNER'S
MANUAL FOR
ADDITIONAL
INFORMATION

2007 PONTIAC G6 GT
NHTSA NO. C70120
FMVSS NO. 118

Figure 4: Tire Information Placard



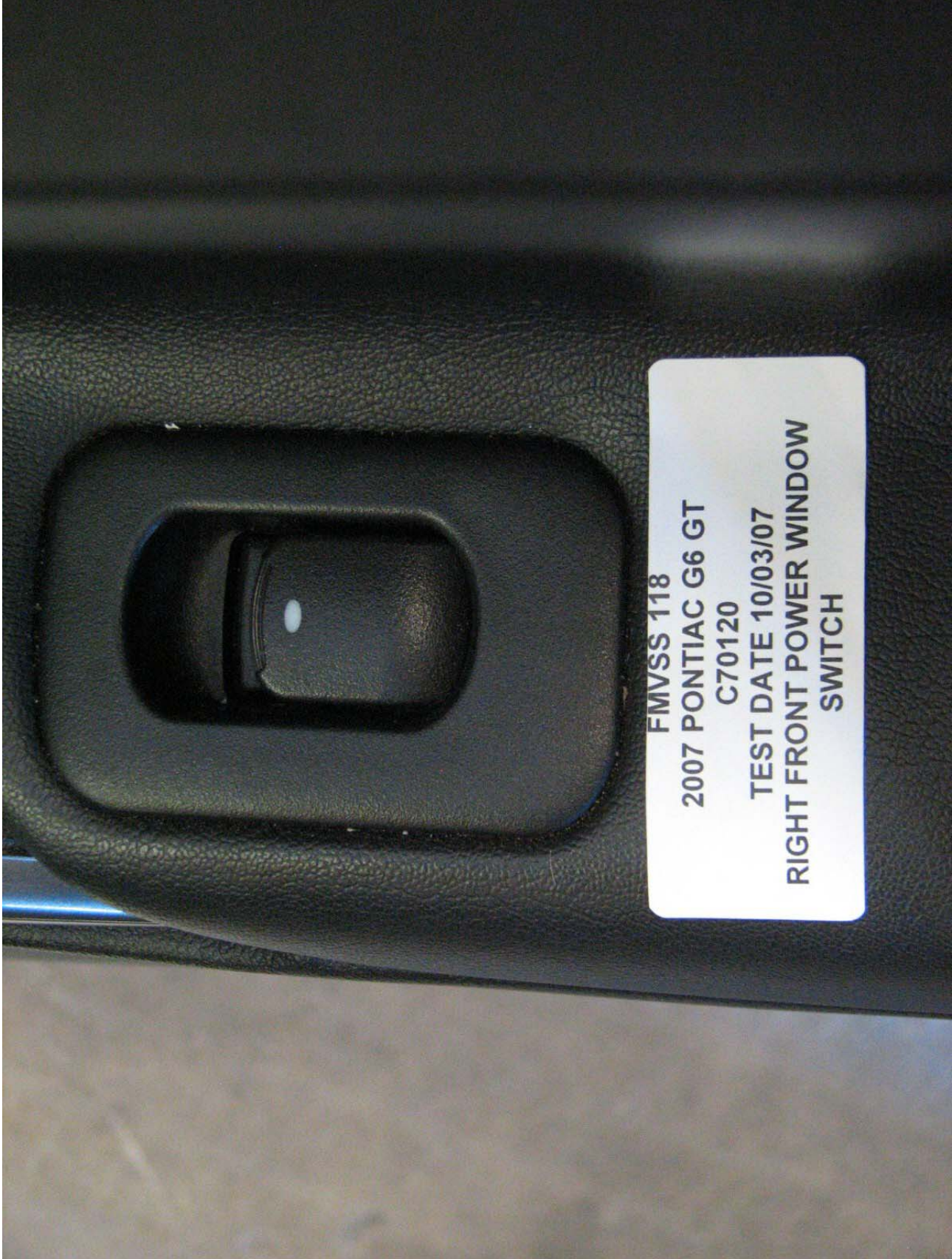
2007 PONTIAC G6 GT
NHTSA NO. C70120
FMVSS NO. 118

Figure 5: Ignition Switch



2007 PONTIAC G6 GT
NHTSA NO. C70120
FMVSS NO. 118

Figure 6: Left Front Master Power Window Switch



2007 PONTIAC G6 GT
NHTSA NO. C70120
FMVSS NO. 118

Figure 7: Right Front Power Window Switch



**FMVSS 118
2007 PONTIAC G6 GT
C70120
TEST DATE 10/03/07
SUNROOF POWER WINDOW SWITCH**

Figure 8: Sunroof Power Window Switch

2007 PONTIAC G6 GT
NHTSA NO. C70120
FMVSS NO. 118



Figure 9: Overall Test Set-Up

2007 PONTIAC G6 GT
NHTSA NO. C70120
FMVSS NO. 118



Figure 10: Test Window With Window Indexing Down

2007 PONTIAC G6 GT
NHTSA NO. C70120
FMVSS NO. 118

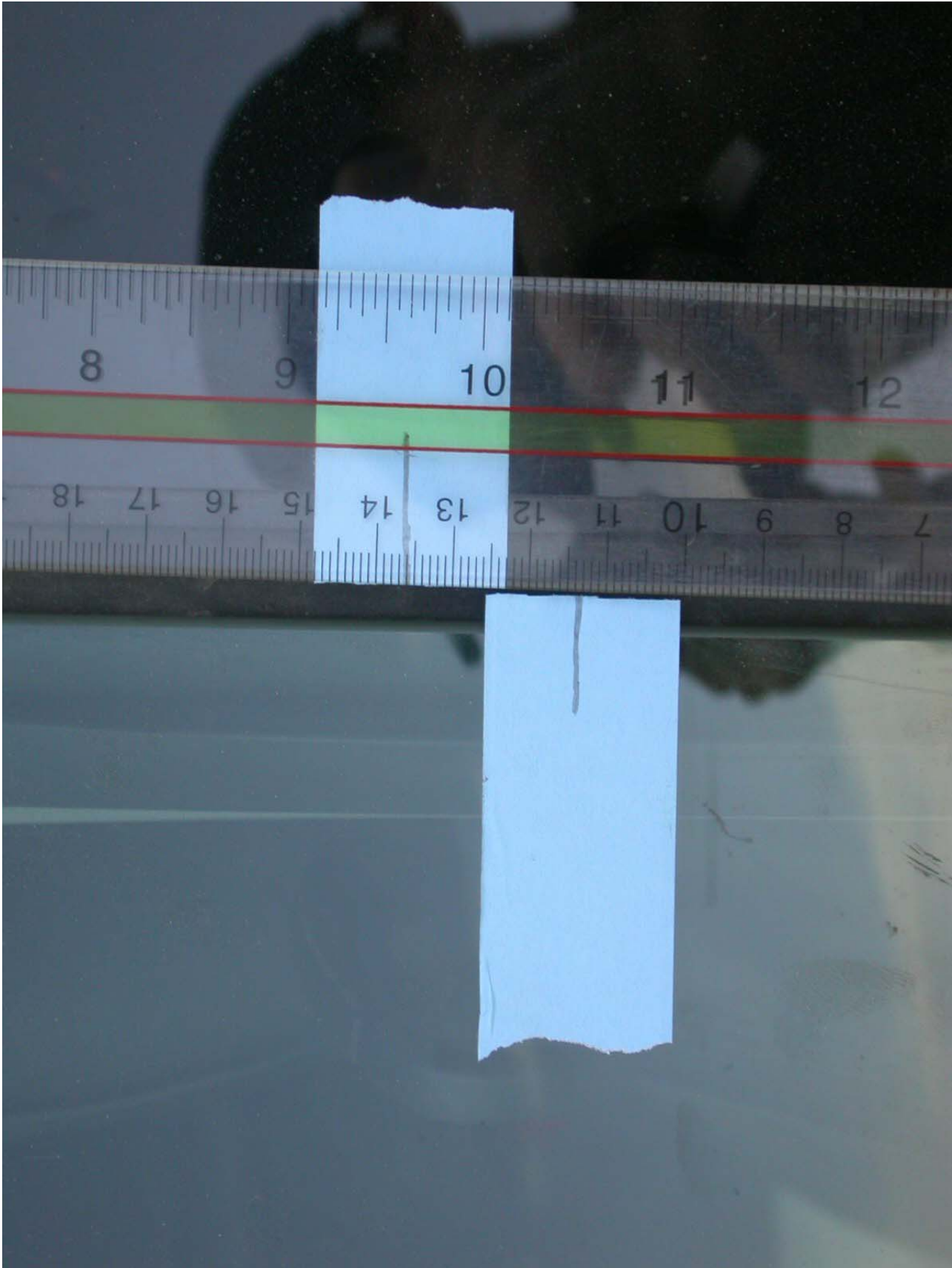


Figure 3: Displacement of Window Indexing

2007 PONTIAC G6 GT
NHTSA NO. C70120
FMVSS NO. 118



Figure 9: Displacement of Window Indexing on Upper Door Seal

2007 PONTIAC G6 GT
NHTSA NO. C70120
FMVSS NO. 118

5. DATA PLOTS

6. COPY OF OWNER'S MANUAL INSTRUCTION FOR USE OF POWER WINDOWS

COPY OF OWNER'S MANUAL INSTRUCTIONS FOR USE OF POWER WINDOWS

VEHICLE			
YEAR	2007	MAKE	Pontiac
MODEL	G6 GT	BODY STYLE	2-Door Coupe
NHTSA NO.	C70120	VIN	1G2ZH18N274149507
TEST DATE:	10/03/07		



COPY OF OWNER'S MANUAL INSTRUCTIONS FOR USE OF POWER WINDOWS

VEHICLE			
YEAR	2007	MAKE	Pontiac
MODEL	G6 GT	BODY STYLE	2-Door Coupe
NHTSA NO.	C70120	VIN	1G2ZH18N274149507
TEST DATE:	10/03/07		

Starting and Operating Your Vehicle

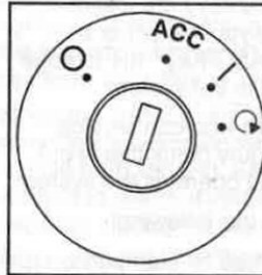
New Vehicle Break-In

Notice: Your vehicle does not need an elaborate break-in. But it will perform better in the long run if you follow these guidelines:

- Do not drive at any one constant speed, fast or slow, for the first 500 miles (805 km). Do not make full-throttle starts. Do not exceed 5,000 engine rpm. Avoid downshifting to brake, or slow, the vehicle.
- Avoid making hard stops for the first 200 miles (322 km) or so. During this time your new brake linings are not yet broken in. Hard stops with new linings can mean premature wear and earlier replacement. Follow this breaking-in guideline every time you get new brake linings.
- Do not tow a trailer during break-in. See *Towing a Trailer on page 296* for the trailer towing capabilities of your vehicle and more information.

Following break-in, engine speed and load can be gradually increased.

Ignition Positions



With the key in the ignition switch, you can turn it to four different positions.

Notice: Using a tool to force the key from the ignition switch could cause damage or break the key. Use the correct key and turn the key only with your hand. Make sure the key is in all the way. If none of this works, then your vehicle needs service.

COPY OF OWNER'S MANUAL INSTRUCTIONS FOR USE OF POWER WINDOWS

VEHICLE			
YEAR	2007	MAKE	Pontiac
MODEL	G6 GT	BODY STYLE	2-Door Coupe
NHTSA NO.	C70120	VIN	1G2ZH18N274149507
TEST DATE:	10/03/07		

○ (OFF): This is the only position from which you can remove the key. For a vehicle with an automatic transaxle, the shift lever must be in PARK (P) with the ignition in OFF to remove the key. For a vehicle with a manual transaxle, the shift lever must be in REVERSE (R) to remove the key. A warning chime will sound if you open the driver's door while the ignition is off and the key is in the ignition.

ACC (Accessory): This position unlocks the transaxle. It also lets you use things like the radio and windshield wipers while the engine is not running. To use ACC, turn the key clockwise to the first position. Use this position if your vehicle must be pushed or towed. See *Recreational Vehicle Towing* on page 294.

Never try to push-start your vehicle, unless it has a manual transaxle.

I (ON): This position is where the key returns to after you start the engine and release the key. The ignition switch will stay in this position while the engine is running. But even while the engine is not running, you can use ON to operate your electrical accessories and to display some instrument panel warning lights. Use the ON position for push-starting a vehicle with a manual transaxle.

The battery could be drained if you leave the key in the ACC or ON position with the engine off. You may not be able to start your vehicle if the battery is allowed to drain for an extended period of time.

Q (START): This position starts the engine. When the engine starts, release the key. The ignition switch will return to the ON position for normal driving.

COPY OF OWNER'S MANUAL INSTRUCTIONS FOR USE OF POWER WINDOWS

VEHICLE			
YEAR	2007	MAKE	Pontiac
MODEL	G6 GT	BODY STYLE	2-Door Coupe
NHTSA NO.	C70120	VIN	1G2ZH18N274149507
TEST DATE:	10/03/07		

Key In the Ignition

Never leave your vehicle with the keys inside, as it is an easy target for joy riders or thieves. If you leave the key in the ignition and park your vehicle, a chime will sound, when you open the driver's door. Always remember to remove your key from the ignition and take it with you. This will lock your ignition and transaxle. Also, always remember to lock the doors.

The battery could be drained if you leave the key in the ignition while your vehicle is parked. You may not be able to start your vehicle after it has been parked for an extended period of time.

Retained Accessory Power (RAP)

Your vehicle has a Retained Accessory Power (RAP) feature which will allow the radio and power windows, and if your vehicle has heated seats and sunroof, to continue to work up to 10 minutes after the ignition is turned OFF.

The power windows, heated seats and sunroof will work until any door is opened.

The radio will continue to work until the driver's door is opened.

All these features will work when the ignition key is in the ON or ACC (Accessory) positions.

COPY OF OWNER'S MANUAL INSTRUCTIONS FOR USE OF POWER WINDOWS

VEHICLE			
YEAR	2007	MAKE	Pontiac
MODEL	G6 GT	BODY STYLE	2-Door Coupe
NHTSA NO.	C70120	VIN	1G2ZH18N274149507
TEST DATE:	10/03/07		

Starting the Engine

To place the transaxle in the proper gear:

Automatic Transaxle

Move your shift lever to PARK (P) or NEUTRAL (N). Your engine will not start in any other position -- this is a safety feature. To restart when you are already moving, use NEUTRAL (N) only.

Notice: Shifting into PARK (P) with the vehicle moving could damage the transaxle. Shift into PARK (P) only when your vehicle is stopped.

Manual Transaxle

The shift lever should be in the NEUTRAL position and the parking brake engaged. Hold the clutch pedal to the floor and start the engine. Your vehicle will not start if the clutch pedal is not all the way down. That is a safety feature.

Starting Procedure

1. With your foot off the accelerator pedal, turn the ignition key to START. When the engine starts, let go of the key. The idle speed will go down as your engine gets warm. Do not race the engine immediately after starting it. Operate the engine and transaxle gently to allow the oil to warm up and lubricate all moving parts.

Your vehicle has a Computer-Controlled Cranking System. This feature assists in starting the engine and protects components. If the ignition key is turned to the START position, and then released when the engine begins cranking, the engine will continue cranking for a few seconds or until the vehicle starts. If the engine does not start and the key is held in START for many seconds, cranking will be stopped after 15 seconds to prevent cranking motor damage.

COPY OF OWNER'S MANUAL INSTRUCTIONS FOR USE OF POWER WINDOWS

VEHICLE			
YEAR	2007	MAKE	Pontiac
MODEL	G6 GT	BODY STYLE	2-Door Coupe
NHTSA NO.	C70120	VIN	1G2ZH18N274149507
TEST DATE:	10/03/07		

To prevent gear damage, this system also prevents cranking if the engine is already running. Engine cranking can be stopped by turning the ignition switch to the ACC or OFF position.

Notice: Cranking the engine for long periods of time, by returning the key to the START position immediately after cranking has ended, can overheat and damage the cranking motor, and drain the battery. Wait at least 15 seconds between each try, to allow the cranking motor to cool down.

2. If the engine does not start after 5-10 seconds, especially in very cold weather (below 0°F or -18°C), it could be flooded with too much gasoline. Try pushing the accelerator pedal all the way to the floor and holding it there as you hold the key in START for up to a maximum of 15 seconds. Wait at least 15 seconds between each try, to allow the cranking motor to cool down. When the engine starts, let go of the key and accelerator. If the vehicle starts briefly but then stops again, do the same thing.

This clears the extra gasoline from the engine. Do not race the engine immediately after starting it. Operate the engine and transaxle gently until the oil warms up and lubricates all moving parts.

Notice: Your engine is designed to work with the electronics in your vehicle. If you add electrical parts or accessories, you could change the way the engine operates. Before adding electrical equipment, check with your dealer. If you do not, your engine might not perform properly. Any resulting damage would not be covered by your vehicle's warranty.

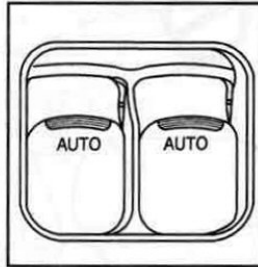
COPY OF OWNER'S MANUAL INSTRUCTIONS FOR USE OF POWER WINDOWS

VEHICLE			
YEAR	2007	MAKE	Pontiac
MODEL	G6 GT	BODY STYLE	2-Door Coupe
NHTSA NO.	C70120	VIN	1G2ZH18N274149507
TEST DATE:	10/03/07		

Power Windows



Sedan Switches



Coupe Switches

The power window switches for all the windows are located on the driver's door armrest. Each passenger door also has a power window switch for its own window. Press the front of the switch to the first position to lower the window to the desired level. Pull the switch up to raise the window.

Window Indexing (Coupe and Retractable Hardtop)

This feature automatically lowers the window a small amount when the door is opened. Then, when the door is closed, the window will automatically raise fully.

Power Window Initialize (Coupe and Retractable Hardtop)

After a power reconnect, such as battery replacement, the indexing feature will not function until the system is initialized. This procedure needs to be done for each individual window. Once power is restored, do the following:

1. Close the door.
2. Raise the window by pulling the power window switch up.
3. Hold the window switch up for two seconds after the window is closed. Release the switch. Then hold the switch up again for two seconds.
4. Lower the window all the way down. Hold the switch down for two seconds.

COPY OF OWNER'S MANUAL INSTRUCTIONS FOR USE OF POWER WINDOWS

VEHICLE			
YEAR	2007	MAKE	Pontiac
MODEL	G6 GT	BODY STYLE	2-Door Coupe
NHTSA NO.	C70120	VIN	1G2ZH18N274149507
TEST DATE:	10/03/07		

5. Repeat the procedure for each window, including the rear quarter windows on retractable hardtop models, until all windows are initialized.


Express-Down Window

The express-down feature lowers the window all the way without continuously pressing the switch. The switch(es) is labeled AUTO.

On sedan and retractable hardtop models, the driver's window has the express-down feature. On coupe models, both the driver's and front passenger's window have the express-down feature. The front passenger's express-down is activated by the driver's side switch only. Press the front of the switch all the way down and release it to express open the window.

To stop the window while it is lowering, pull the front of the switch up briefly.

Window Lockout (Sedan Only)

 (Window Lockout): This button prevents the rear passengers from using their window switches.

The window lockout button is located near the driver's power window switches. The driver can still operate all the windows and the front passenger can operate their own window with the lockout on. Press the right side of the switch to turn the lockout feature on. Press the left side to turn it off. The red part of the switch is visible when you have returned to normal window operation.

Sun Visors

Swing down the visors to block glare. The visors can be removed from the center mount and swung to the side. The visors also have extenders that can be pulled out for additional blockage.

Your vehicle may have lighted vanity mirrors on the driver's and passenger's visors. When you lift the cover, the light will turn on.