



Michelle Lujan Grisham
Governor

Michael R. Sandoval
Cabinet Secretary

FOR IMMEDIATE RELEASE

Contact: Kimberly Gallegos
NMDOT District Three Public Information Officer
Kimberly.Gallegos@state.nm.us
(505) 639.3576

January 15, 2020

UPDATED TRAFFIC ALERT

**East bound lanes at Rio Bravo Bridge will shut down completely starting
Monday, January 27th for three weeks**

ALBUQUERQUE– The New Mexico Department of Transportation would like to inform the traveling public, the eastbound lanes of the Rio Bravo Bridge will be closed completely from Isleta Blvd. to POCO LOCO Drive starting Monday, Jan. 27 for three weeks.

A pier underneath the bridge is in need of repair. A temporary solution was constructed in late December. For safety reasons, only one lane could be used for eastbound travel due to weight capacity issues.

A team of engineers has been working under the bridge, assessing the pier and designing a construction plan to replace the temporary repair.

NMDOT recognizes the inconvenience the bridge work has caused to the traveling public over the last couple of weeks. Especially to those living and commuting in the South Valley. NMDOT's number one priority is safety. The department wants each and every driver to have access to safe, efficient roadways. That is why the bridge repair is necessary at this time.

Expect delays and please be patient. Drivers are encouraged to use the designated detour and alternate routes.

###

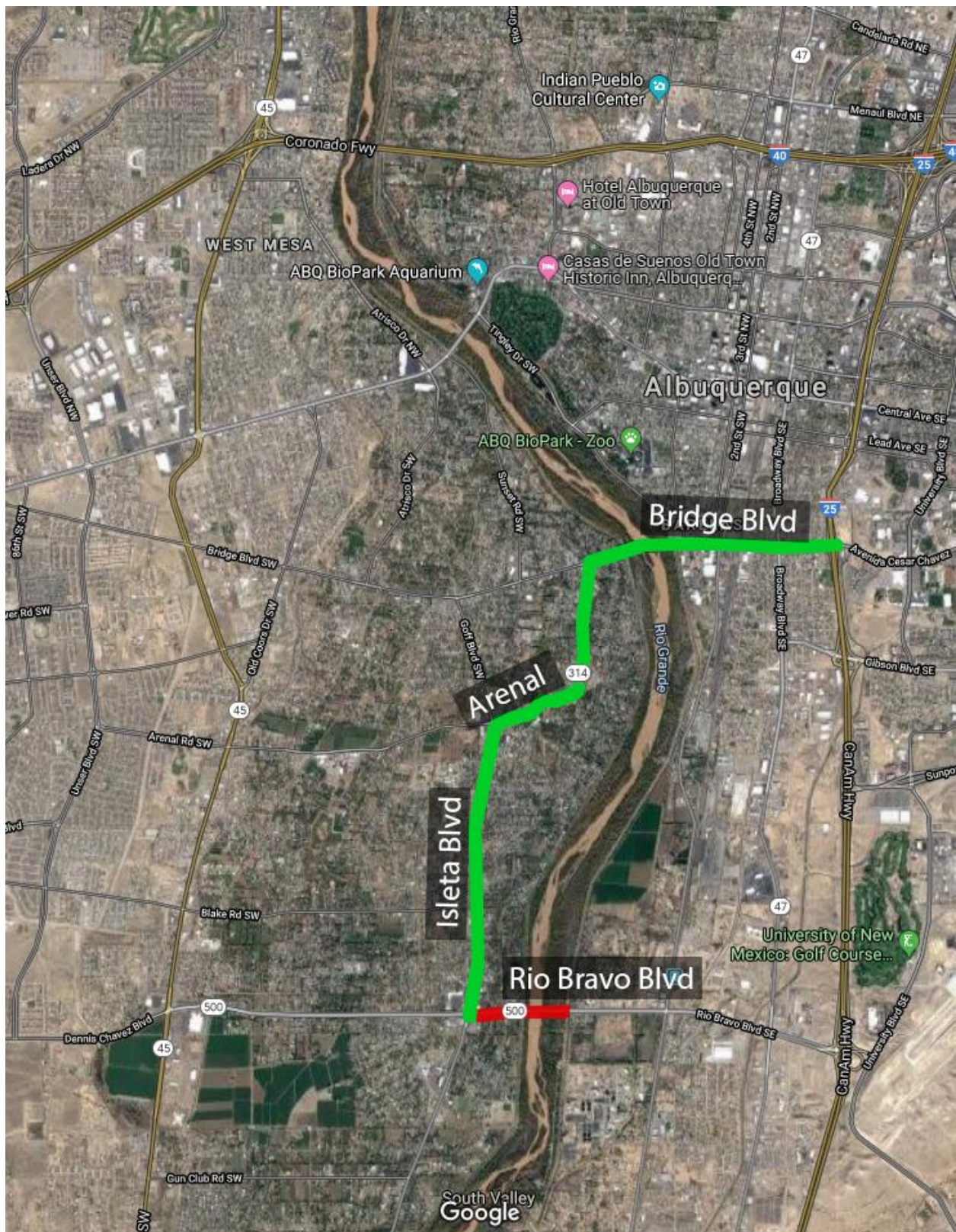
Full Closure will take place from NM 314 Isleta Blvd. to the end of the bridge eastbound across the river.



Detour 1: South on Isleta to I-25



Detour 2: North on Isleta to Arenal to Bridge which becomes Avenida Cesar Chavez to I-25



Detour 3: North on Coors to I-40

