

REGISTERED IMPORTER NEWSLETTER No.33
National Highway Traffic Safety Administration
Office of Vehicle Safety Compliance
July 2007

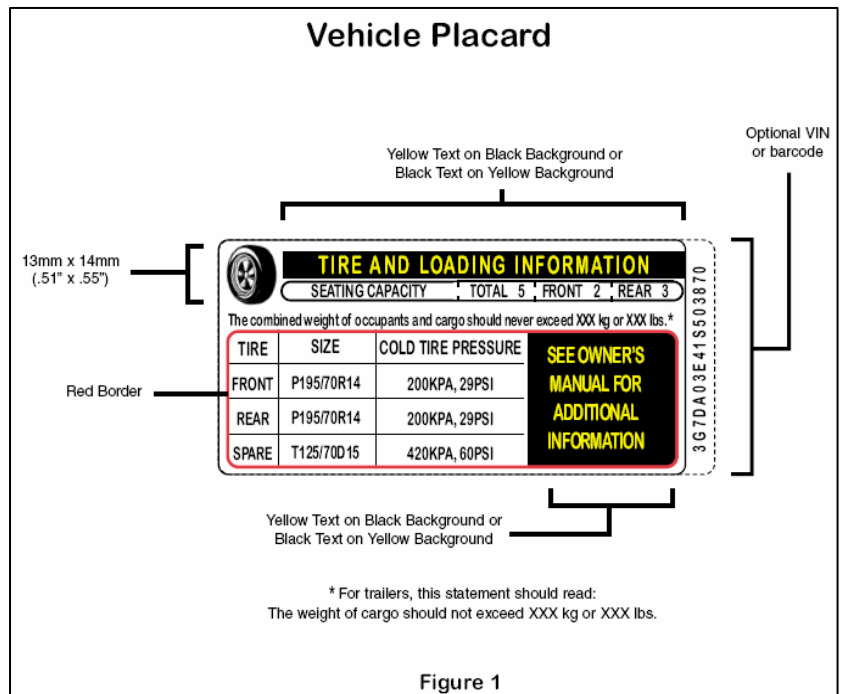
NEW TIRE INFORMATION LABELING REQUIREMENTS

On September 1, 2005, new vehicle labeling requirements went into effect under Federal Motor Vehicle Safety Standard (FMVSS) No. 110 Tire Selection and Rims for Motor Vehicles with a GVWR of 4,536 Kilograms (10,000 Pounds) or Less. The standard applies to all vehicles in that weight class, except for motorcycles, low speed vehicles (LSVs), and incomplete vehicles. The new labeling requirements are described below. NHTSA recommends that each RI carefully read the amended standard in its entirety. The standard can be found at 49 CFR 571.110. To assist you in understanding the new requirements, we have set forth below the text of the amended standard that specifies requirements for the tire information placard that must be affixed to vehicles covered by the standard. We are also providing a sample certification label that RIs must affix to each vehicle they bring into conformity with all applicable Federal motor vehicle safety and bumper standards and sample text for the tire information placard to be affixed to passenger cars and to trailers.

New Labeling Requirements Effective September 1, 2005

S4.3 Placard. Each vehicle, except for a trailer, incomplete vehicle, **“and (LSVs)”** shall show the information specified in S4.3 (a) through (g), and may show, at the manufacturer’s option, the information specified in S4.3 (h) and (i) on a placard permanently affixed to the driver’s side B-pillar. In each vehicle without a driver’s side B-pillar and with two doors on the driver’s side of the vehicle opening in opposite directions, the placard shall be affixed on the forward edge of the rear side door. If the above locations do not permit the affixing of a placard that is legible, visible and prominent, the placard shall be permanently affixed to the rear edge of the driver’s side door. If this location does not permit the affixing of a placard...the placard shall be affixed to the inward facing surface of the vehicle next to the driver’s seating position. This information shall be in the English language and conform in color and format...

- (a) Vehicle capacity weight expressed as “The combined weight of occupants and cargo should never exceed XXX kilograms or XXX pounds”
- (b) Designated seated capacity...
- (c) Vehicle manufacturer’s cold tire inflation pressure for front, rear and spare tires...For full size spare tires, the statement “see above” may, at the manufacturer’s option replace manufacturer’s recommended cold tire inflation pressure. If no spare tire is provided, the word “none” must replace the manufacturer’s recommended cold tire inflation pressure.
- (d) Tire size designation...for tires installed at the time of first purchase... For full size spare tires, the statement “see above” may, at the manufacturer’s option replace the tire size designation. If no spare tire is provided, the word “none” must replace the tire size designation;
- (e) On the vehicle placard, “Tire and Loading Information” and, on the tire inflation pressure label, “Tire Information”;
- (f) “See Owner’s Manual for Additional Information”
- (g) For a vehicle equipped with a non-pneumatic spare tire assembly, the tire identification code...
- (h) At the manufacturer’s option, identifying information provided in any alphanumeric and or barcode form, located vertically, along the right edge or the left edge of the placard or the label, or horizontally, along the bottom edge of the placard or label;
- (i) At the manufacturer’s option, the load range identification symbol, load index, and speed rating, located immediately to the right of the tire size designation listed in accordance with S4.3 (d) above.



- See S4.3.1 for Requirements for vehicles manufactured in two or more stages.
- See S4.3.2 for Requirements for altered vehicles.
- See S4.3.3 for Additional labeling information for vehicles other than passenger cars.
- See S4.3.5 for Requirements for trailers.

If you have any questions, please contact Vincent DiLeonardi at 202-366-5307, or by email at vince.dileonardi@dot.gov.