

# Case 414 : Narrative

Case Vehicle (A): 2003 Honda
Type: Accord EX, 4-door sedan
Driver: 57-year-old male
CDC: 12-FDEW-3

## SITUATION

[1](#) [2](#) [3](#) It was dark and the asphalt road surface was dry and free of defects as case vehicle (A) was traveling west at an unknown speed in the westbound lane of two-lane, east-west road with a posted speed limit of 40 mph (64 kph). [4](#) As case vehicle (A) approached a traffic-signal-controlled four-way intersection, the driver reportedly fell asleep and [5](#) case vehicle (A) veered to the left, continued through the intersection, and [6](#) struck a guardrail at the southwest corner of the intersection. Case vehicle (A) was towed from the scene due to damage.

The police accident report indicates A-level injuries for the male driver of case vehicle (A) who was transported to a medical facility where he was hospitalized for eleven days. A hospital-administered blood test revealed a blood alcohol level of .147%.

## GENERAL VEHICLE DAMAGE AND ESTIMATED CRASH SEVERITIES

[7](#) Direct damage to the front of case vehicle (A) was moderate and extended 160-cm across the entire front. The maximum frontal crush was 51 cm and occurred right of center, 75-cm in from the left-front bumper corner.

Using the WinSMASH crash-reconstruction program and crush profiles measured for [8](#) [9](#) [10](#) [11](#) case vehicle (A), the following impact severity was estimated for the frontal impact with the guardrail:

		Estimated Velocity Change - kph (mph)		
Vehicle	Variable	Total	Longitudinal	Latitudinal
Case Vehicle (A)	delta V	35 (22)	-35 (-22)	0 (0)

## DESCRIPTION OF DAMAGE TO CASE VEHICLE (A)

### Exterior

[12](#) Direct damage to case vehicle (A) extended across the entire front but the damage was more severe on the right than on the left. [13](#) The bumper cover was completely separated from the vehicle and the bumper support was bent back into the grille, which was damaged and pushed rearward. [14](#) The right headlight assembly was damaged and the left headlight assembly was intact but the inner corner of the headlight was cracked. [15](#) The right side of the hood was crushed to the rear, the front edge was bent

down and back, and the rear edge was slightly elevated. [15](#) [16](#) The hood latch was damaged and jammed, the right hood hinge was bent to the left and up, and the left hood hinge was probably damaged but it was not visible. There was a spider-web crack on the upper-left portion of the windshield due to interior contact by the driver, and there were cracks radiating throughout the right side of the windshield from deformation of the cowl.

[13](#) On the right side, the fender was crumpled, the right-front tire was flat, the wheel cover was scraped, and the right wheelbase was decreased by 9 cm. There was a dent near the bottom of the upper section of the right A-pillar but there was no other damage to the A-pillar. The right-side rearview mirror was bent back but it was not damaged and [17](#) there was no other damage to the right side of the vehicle.

[18](#) There was no damage to the rear of case vehicle (A).

[19](#) [20](#) On the left side, the fender was buckled in just forward of the driver door, and the left-side rearview mirror was bent back but it was not damaged. There was no damage to the left-side wheels or tires and there was no change in the left wheelbase. [21](#) There was no other damage to the left side of the case vehicle.

## Interior

[22](#) [23](#) [24](#) [25](#) This vehicle was equipped with steering-wheel and dash-mounted frontal-impact airbags, with front-row seatback-mounted side-impact airbags, and with side-impact curtains. The steering-wheel and dash-mounted airbags both deployed in the frontal impact with the guardrail but the curtain and side-impact airbags did not deploy. [22](#) [26](#) In the driver seating area, there was no damage to the steering-wheel module cover/flaps or to the airbag, but [22](#) there were several bloodstains on the upper-center and upper-left regions of the airbag and [27](#) there

was a small deposit of unknown material on the left side of the tether stitches. [28](#) [29](#) The steering-wheel was rotated about 90 degrees from the straight-ahead position, and the bottom of the rim was severely deformed so that the steering-wheel [28](#) [30](#) spokes were pulled away from the hub. [31](#) The upper cover of the steering-wheel hub was displaced up but there was no rotation of the steering-wheel column. [32](#) [33](#) There was a spiderweb crack with a hair deposit near the top of the windshield forward of the driver seat, and [34](#) [35](#) there was a scuffmark on the sunvisor. [36](#) The windshield-wiper control lever on the right side of the steering column was broken and hanging by a wire, and [37](#) the sunroof control-button module located on the left side of the lower instrument panel was pulled out and displaced down. [38](#) [39](#) The driver knee-bolster cover was cracked and separated from its attachments, but [40](#) [41](#) [42](#) there was no other damage in the driver seating area.

In the center-front area, [43](#) the rearview mirror was detached from the windshield but the mirror glass was intact. [44](#) The radio cover was slightly displaced, the storage compartment of the vertical console was partially open and pulled out, and [45](#) the armrest between the front seats was displaced to the left. [46](#) [47](#) There were deposits of unidentified material on the radio and on the storage compartment cover below the radio. [48](#) There was no other damage in the center-front area.

[49](#) [50](#) [51](#) [52](#) [53](#) In the right-front seating area, the toepan was displaced about 4-cm to the rear but there was no other damage.

[54](#) There was no damage in the rear seating area of case vehicle (A).

## OCCUPANT KINEMATICS AND INJURIES

40 The 175-cm, 95-kg (5-ft 9-in, 210-lb) 57-year-old male driver was not using the three-point belt but the steering-wheel airbag deployed during the frontal impact with the guardrail. There was no evidence of belt use 55 on the D-ring or 56 on the continuous loop. During the frontal impact, the unbelted driver moved forward relative to the vehicle interior into the airbag, steering wheel, knee bolster, and windshield. He sustained forehead and chin abrasions and fractures to two capped teeth, probably from face contact with the windshield, as indicated by the cracked windshield with hair deposit. He sustained a contusion to the right side of the neck and fractures to

the right 1st rib from an unknown source. He also sustained fractures to the left 5th and 6th ribs, possibly from chest contact with and/or loading by the steering wheel and/or airbag. He sustained a laceration to the spleen, probably from abdomen contact with the lower steering-wheel rim, 28 as indicted by severe deformation of the lower steering-wheel rim. He sustained a comminuted fracture to the right acetabulum with dislocation of the hip as well as lacerations to both knees, from 38 knee contact with the knee bolster.

The following table and 57 attached drawing summarize the injuries sustained by the unrestrained driver of case vehicle (A).

Occupant: Driver	Age: 57 years	Gender: Male		
Restraints: Steering-wheel airbag	Stature: 175 cm (5 ft, 9 in)	Mass: 95 kg (210 lb)		
Injury Description	A.I.S.	Injury Source		
		Definite	Probable	Possible
—	—	—	—	—
Abrasion, forehead	1	—	Windshield	—
Abrasion, chin	1	—	Windshield	—
Fractures, two capped teeth	1	—	Windshield	—
Contusion, right side of neck	1	Unknown	—	—
Fracture, right 1st rib	1	Unknown	—	—
Fractures, left ribs 5 and 6	2	—	—	Steering wheel/airbag
Laceration, spleen	2	—	Steering-wheel rim	—
Comminuted fracture, right acetabulum with right hip dislocation	3	Knee bolster	—	—
Laceration, left knee	1	Knee bolster	—	—
Laceration, right knee	1	Knee bolster	—	—
Maximum A.I.S. Level	3	—	—	—
Injury Severity Score	17	—	—	—

CASE NO.: 414

CASE VEHICLE: 2003 Honda

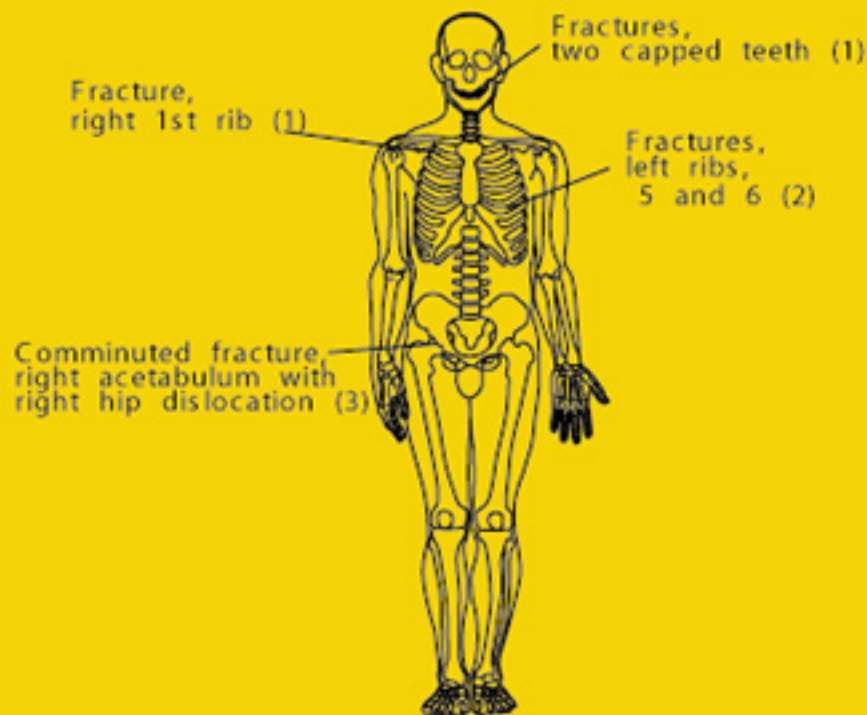
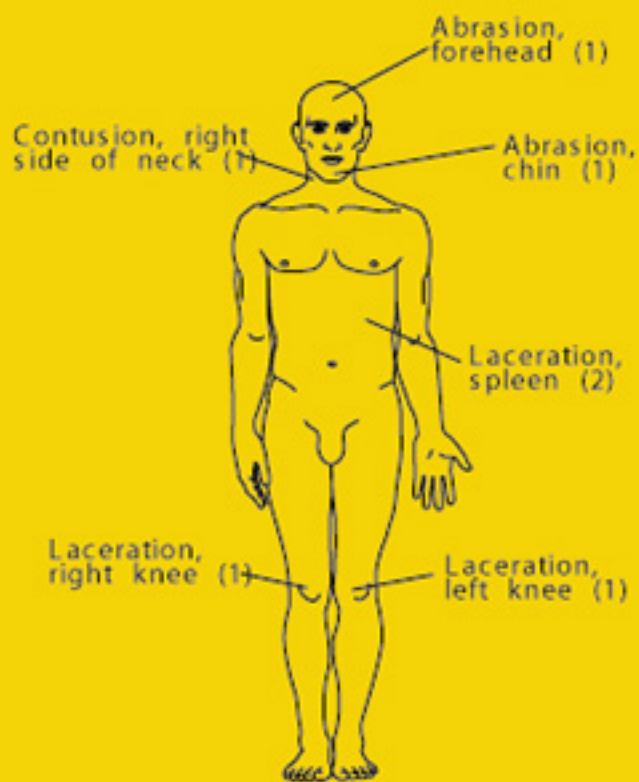
TYPE: Accord EX, 4-door sedan

OCCUPANT: (Driver) 57-year-old male

STATURE: 175 cm (5 ft, 9 in) MASS: 95 kg (210 lb)

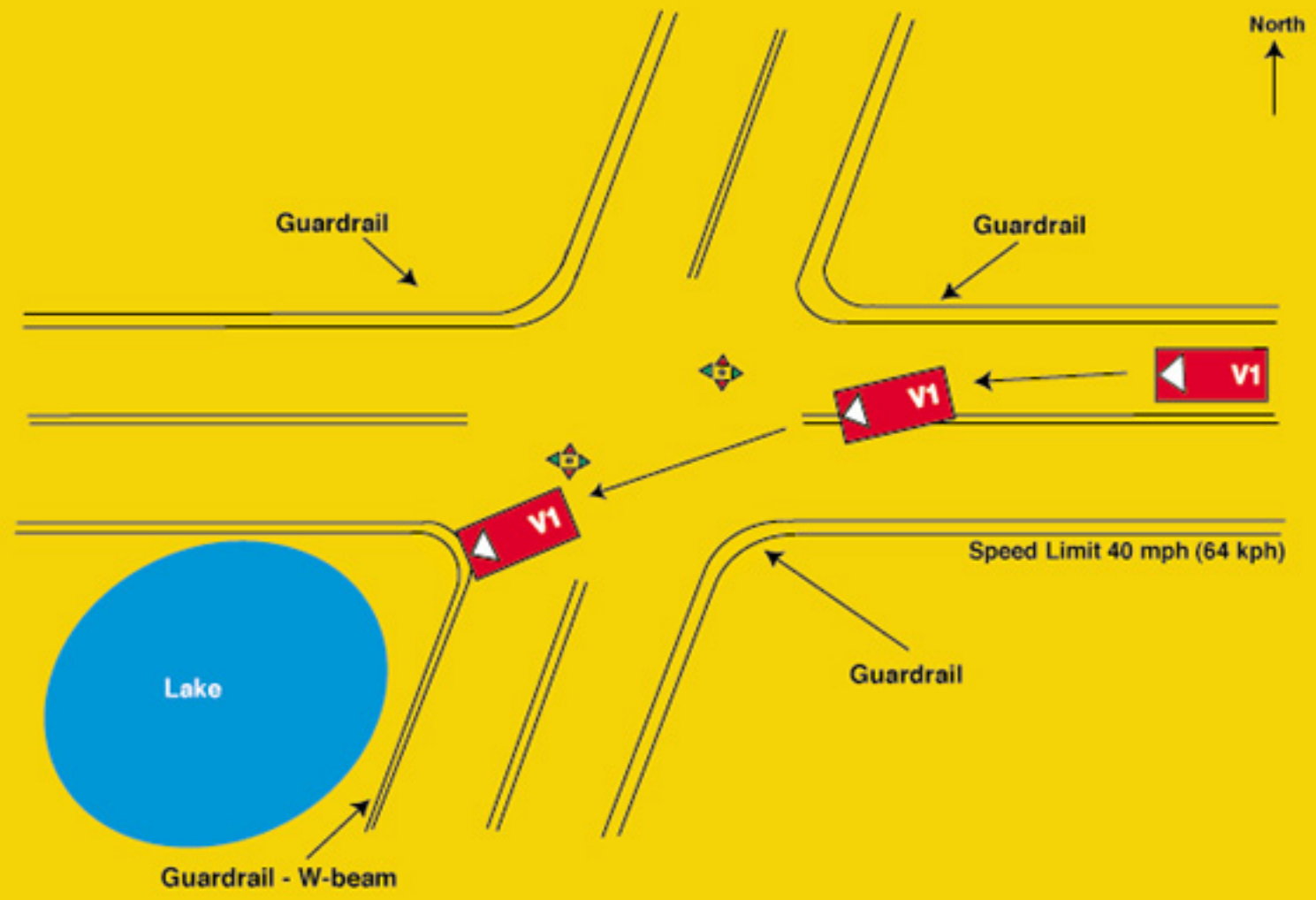
RESTRAINTS: Steering-wheel airbag

SEVERITY: MAIS - 3 ISS - 17



Case No.: 414  
Case Vehicle (A): 2003 Honda  
Type: Accord EX, 4-door sedan  
Driver: 57-year-old male

Light Conditions: Dark-lighted  
Weather: Clear  
Road Surface: Dry  
Road Construction: Asphalt



# Vehicle Report

Click on Section Name to jump directly to that Section —

- [General Conditions](#)
- [Other Vehicle](#)
- [Case Vehicle General](#)
- [Case Vehicle Damage Description](#)
- [Crash Severity](#)
- [Case Vehicle Tires & Rims](#)
- [Case Vehicle Fuel, Tank, Fire](#)
- [Case Vehicle Exterior](#)
- [Case Vehicle Steering Column/Rim](#)
- [Case Vehicle Intrusion](#)
- [Case Vehicle Airbag\(s\)](#)
- [Case Vehicle Interior](#)
- [Case Vehicle Seats](#)

---

## General Conditions

[Back to Top](#)

Variable Number and Name	Code Value	Code Description	Other Options
V206 — Urban/Rural Area	1	Urban	<a href="#">more</a>
V207 — Limited Access Highway	0	No	<a href="#">more</a>
V208 — Road Total Lanes	2	2 lanes	<a href="#">more</a>
V209 — Intersecting Road Total Lanes	2	2 lanes	<a href="#">more</a>
V210 — Road Surface Type	1	Asphalt	<a href="#">more</a>
V211 — Road Defects	0	No	<a href="#">more</a>
V212 — Construction Zone	0	No	<a href="#">more</a>
V213 — Road Alignment Vertical Plane	1	Level	<a href="#">more</a>
V214 — Road Alignment Horizontal Plane	1	Straight	<a href="#">more</a>
V215 — Surface Covering	10	Dry	<a href="#">more</a>
V216 — Visibility Limitation	0	None	<a href="#">more</a>
V217 — Visibility Obstruction	0	None	<a href="#">more</a>
V218 — Speed Limit	3	61-70 km/h .. 40 mph	<a href="#">more</a>
V219 — Precipitation Type	0	None	<a href="#">more</a>
V220 — Precipitation Rate	8	Not applicable	<a href="#">more</a>
V221 — Temperature	5	6 to 15 C .. 42 to 59 F	<a href="#">more</a>

V222 — Crosswind	9	Unknown	<a href="#">more</a>
V223 — Light Conditions	5	Dark, unlighted	<a href="#">more</a>
V224 — Mechanical Malfunction Mention	0	No	<a href="#">more</a>
V225 — Case Vehicle and Object	1	Yes	<a href="#">more</a>
V226 — Case Vehicle Rollover	0	No	<a href="#">more</a>
V227 — Case Vehicle Ran Off Roadway	1	Yes	<a href="#">more</a>
V228 — Moving Case Vehicle/Contacted Moving Vehicle	0	No	<a href="#">more</a>
V229 — Case Vehicle/Contacted Stopped Vehicle	0	No	<a href="#">more</a>
V230 — Stopped Case Vehicle/Contactd Vehicle	0	No	<a href="#">more</a>
V231 — Total Vehicles Hit By Case Vehicle	0	0 vehicles	<a href="#">more</a>
V232 — Any Fire in Crash	0	No	<a href="#">more</a>
V233 — Max Police Severity-PAR	3	A - Incapacitating Injury	<a href="#">more</a>
V234 — Driver Alcohol Involvement	1	Had been drinking	<a href="#">more</a>
V235 — Driver Alcohol BAC	15	—	—
V236 — Driver Impairment Mention	1	Yes	<a href="#">more</a>
V237 — Driven/Towed From Scene	2	Towed Due to Damage	<a href="#">more</a>

## Other Vehicle

[Back to Top](#)

Variable Number and Name	Code Value	Code Description	Other Options
V301 — Other Vehicle VIN	none	—	—
V302 — Other Vehicle Manufacturer/Body Code	99898	—	—
V303 — Other Vehicle Manufacturer	998	No Other Vehicle	<a href="#">more</a>
V304 — Other Vehicle Body Code	98	No Other Vehicle	<a href="#">more</a>
V305 — Other Vehicle Make/Model	0000	No other vehicle	<a href="#">more</a>
V306 — Other Vehicle Model Year	9999	No other vehicle	<a href="#">more</a>
V307 — Other Vehicle Mass	999998	No other vehicle	<a href="#">more</a>
V308 — Other Vehicle Number	8	No other vehicle	<a href="#">more</a>
V309 — Other Vehicle Number of Occupants	98	No other vehicle	<a href="#">more</a>
V310 — Other Vehicle Traveling Speed	999	Unknown	<a href="#">more</a>

V311 — Highest Police Injury Severity	8	Unoccupied Vehicle	<a href="#">more</a>
V312 — Other Vehicle Type	98	No Other Vehicle	<a href="#">more</a>
V313 — Other Vehicle Wheelbase (cm)	998	No other vehicle	<a href="#">more</a>
V314 — Average Track Width	999	Unknown	<a href="#">more</a>
V315 — Overall Length	999	Unknown	<a href="#">more</a>
V316 — Overall Width (OAW)	999	Unknown	<a href="#">more</a>
V317 — Front Overhang (FOH)	999	Unknown	<a href="#">more</a>
V318 — Rear Overhang (ROH)	999	Unknown	<a href="#">more</a>
V319 — Undeformed End Width (UEW)	999	Unknown	<a href="#">more</a>
V320 — Engine Displacement	9.9 l	—	—
V321 — Engine: Number of Cylinders	99	Unknown	<a href="#">more</a>
V322 — Direct Damage Length (DDL)	999	Unknown	<a href="#">more</a>
V323 — Front-End Overlap % (FEO)	99	Missing or Not applicable	<a href="#">more</a>
V324 — Vehicle Overlap % (VOL)	99	Missing or Not applicable	<a href="#">more</a>

## Case Vehicle General



[Click for case vehicle figure](#)

[Back to Top](#)

Variable Number and Name	Code Value	Code Description	Other Options
V401 — VIN	1HGCM66513A0	—	—
V402 — Manufacturer/Body Code	18228	—	—
V403 — Vehicle Manufacturer	182	Honda/America	<a href="#">more</a>
V404 — Vehicle Body Code	28	—	—
V405 — Make/Model Code	2311	Accord	<a href="#">more</a>
V406 — Model Year	2003	—	—
V407 — Vehicle Mass	001504 kg	—	—
V408 — Odometer Reading	888888	—	—
V409 — Number of Occupants	01	—	—
V410 — Traveling Speed	999	Unknown	<a href="#">more</a>
V411 — Body Type	14	4-door sedan	<a href="#">more</a>
V412 — Stolen Vehicle	8	Not currently collected	<a href="#">more</a>
V413 — Body Structure	2	Unitized	<a href="#">more</a>
V414 — Transmission Type	1	Automatic	<a href="#">more</a>
V415 — Transmission Lever Location	2	Console	<a href="#">more</a>
V416 — Steering	1	Power	<a href="#">more</a>



V417 — Brakes	1	Power	<a href="#">more</a>
V418 — Brake Type	3	Disc - all wheels	<a href="#">more</a>
V419 — Brake Anti-lock Device	2	Four-wheel	<a href="#">more</a>
V420 — Air Conditioning in Vehicle	8	Not currently collected	<a href="#">more</a>
V421 — Drive Type	2	Front wheel	<a href="#">more</a>
V422 — Dual Rear Wheels	0	No	<a href="#">more</a>
V423 — Original Restraint System Type	3	Airbag	<a href="#">more</a>
V424 — Equipped With Roll Bar	0	No	<a href="#">more</a>
V425 — Roof Type	4	Sun roof closed	<a href="#">more</a>
V426 — Wheelbase	274 cm	—	—
V427 — Anti-lacerative Glass	0	None	<a href="#">more</a>
V428 — Average Track Width	157 cm	—	—
V429 — Overall Length	481 cm	—	—
V430 — Overall Width (OAW)	182 cm	—	—
V431 — Front Overhang	098 cm	—	—
V432 — Rear Overhang	109 cm	—	—
V433 — Undeformed End Width (UEW)	160 cm	—	—
V434 — Engine Displacement	3.0 l	—	—
V435 — Engine: Number of Cylinders	06	—	—
V436 — Direct Damage Length (DDL)	160 cm	—	—
V437 — Front End Overlap % (FEO)	98	98% or more	<a href="#">more</a>
V438 — Vehicle Overlap % (VOL)	98	98% or more	<a href="#">more</a>

## Case Vehicle Damage Description

[Back to Top](#)

Variable Number and Name	Code Value	Code Description	Other Options
V501 — Maximum Crush - Front	051 cm	—	—
V502 — Maximum Crush - Right Side	000 cm	No crush (or less than 1 cm.)	<a href="#">more</a>
V503 — Maximum Crush - Rear	000 cm	No crush (or less than 1 cm.)	<a href="#">more</a>
V504 — Maximum Crush - Left Side	000 cm	No crush (or less than 1 cm.)	<a href="#">more</a>
V505 — Maximum Crush - Roof	000 cm	No crush (or less than 1 cm.)	<a href="#">more</a>
V506 — Maximum Crush - Other	000 cm	No crush (or less than 1 cm.)	<a href="#">more</a>

V507 — Are Events In Chronological Order	1	Yes	<a href="#">more</a>
V508 — Event 1 Impact Location	1	On Roadway	<a href="#">more</a>
V509 — Event 1 Impact Configuration	17	FRONT of case veh - object	<a href="#">more</a>
V510 — Event 1 Object/Vehicle Contacted	91	Guard rail, middle section	<a href="#">more</a>
V511 — Event 2 Impact Location	8	No 2nd event	<a href="#">more</a>
V512 — Event 2 Impact Configuration	88	No 2nd event	<a href="#">more</a>
V513 — Event 2 Object/Vehicle Contacted	00	No object/vehicle contacted	<a href="#">more</a>
V514 — Event 3 Impact Location	8	No 3rd event	<a href="#">more</a>
V515 — Event 3 Impact Configuration	88	No 3rd event	<a href="#">more</a>
V516 — Event 3 Object/Vehicle Contacted	00	No object/vehicle contacted	<a href="#">more</a>
V517 — Event 4 Impact Location	8	No 4th event	<a href="#">more</a>
V518 — Event 4 Impact Configuration	88	No 4th event	<a href="#">more</a>
V519 — Event 4 Object/Vehicle Contacted	00	No object/vehicle contacted	<a href="#">more</a>
V520 — Event 5 Impact Location	8	No 5th event	<a href="#">more</a>
V521 — Event 5 Impact Configuration	88	No 5th event	<a href="#">more</a>
V522 — Event 5 Object/Vehicle Contacted	00	No object/vehicle contacted	<a href="#">more</a>
V523 — Event 6 Impact Location	8	No 6th event	<a href="#">more</a>
V524 — Event 6 Impact Configuration	88	No 6th event	<a href="#">more</a>
V525 — Event 6 Object/Vehicle Contacted	00	No object/vehicle contacted	<a href="#">more</a>
V526 — Event 7 Impact On Road	8	No 7th event	<a href="#">more</a>
V527 — Event 7 Impact Configuration	88	No 7th event	<a href="#">more</a>
V528 — Event 7 Object/Vehicle Contacted	00	No object/vehicle contacted	<a href="#">more</a>
V529 — Primary CDC Case Vehicle -event Number	1	Event 1	<a href="#">more</a>
V530 — Primary CDC Case Vehicle - impact speed	999	Unknown	<a href="#">more</a>
V531 — Primary CDC Case Vehicle	1	Investigator	<a href="#">more</a>

- Estimated By			
V532 — Primary CDC Case Vehicle -crush	051	—	—
V533 — Primary CDC Case Vehicle -clock #1	12	12 o'clock	<a href="#">more</a>
V534 — Primary CDC Case Vehicle letter 1 #1	06	F - Front	<a href="#">more</a>
V535 — Primary CDC Case Vehicle letter 2 #1	04	D - Distributed (Side or End)	<a href="#">more</a>
V536 — Primary CDC Case Vehicle letter 3 #1	05	E - Everything below belt line	<a href="#">more</a>
V537 — Primary CDC Case Vehicle letter 4 #1	23	W - Wide impact area	<a href="#">more</a>
V538 — Primary CDC Case Vehicle Extent #1	03	Extent 3	<a href="#">more</a>
V539 — Primary CDC Case Vehicle -CDC #1	12FDEW3	—	—
V541 — Primary CDC Case Vehicle letter 1 #2	00	Missing Data/Not applicable	<a href="#">more</a>
V542 — Primary CDC Case Vehicle letter 2 #2	00	Missing Data/Not applicable	<a href="#">more</a>
V543 — Primary CDC Case Vehicle letter 3 #2	00	Missing Data/Not applicable	<a href="#">more</a>
V544 — Primary CDC Case Vehicle letter 4 #2	00	Missing Data/Not applicable	<a href="#">more</a>
V545 — Primary CDC Case Vehicle Extent #2	00	Missing Data/Not applicable	<a href="#">more</a>
V546 — Primary CDC Case Vehicle -CDC #2	9800000	—	—
V547 — Primary CDC Contacted Vehicle - Impact Speed	998	Not Applicable	<a href="#">more</a>
V548 — Primary CDC Contacted Vehicle - Estimated By	8	Not applicable (no vehicle/no impact)	<a href="#">more</a>
V549 — Primary CDC Contacted Vehicle -crush	998	Not Applicable	<a href="#">more</a>
V550 — Primary CDC Contacted Vehicle -clock #1	98	Not Applicable	<a href="#">more</a>
V551 — Primary CDC Contacted Vehicle letter 1 #1	00	Missing Data/Not applicable	<a href="#">more</a>
V552 — Primary CDC Contacted Vehicle letter 2 #1	00	Missing Data/Not applicable	<a href="#">more</a>
V553 — Primary CDC Contacted Vehicle letter 3 #1	00	Missing Data/Not applicable	<a href="#">more</a>

V554 — Primary CDC Contacted Vehicle letter 4 #1	00	Missing Data/Not applicable	<a href="#">more</a>
V555 — Primary CDC Contacted Vehicle Extent #1	00	Missing Data/Not applicable	<a href="#">more</a>
V556 — Primary CDC Contacted Vehicle -CDC #1	9800000	—	—
V558 — Primary CDC Contacted Vehicle letter 1 #2	00	Missing Data/Not applicable	<a href="#">more</a>
V559 — Primary CDC Contacted Vehicle letter 2 #2	00	Missing Data/Not applicable	<a href="#">more</a>
V560 — Primary CDC Contacted Vehicle letter 3 #2	00	Missing Data/Not applicable	<a href="#">more</a>
V561 — Primary CDC Contacted Vehicle letter 4 #2	00	Missing Data/Not applicable	<a href="#">more</a>
V562 — Primary CDC Contacted Vehicle Extent #2	00	Missing Data/Not applicable	<a href="#">more</a>
V563 — Primary CDC Contacted Vehicle -CDC #2	9800000	—	—
V564 — Secondary CDC Case Vehicle - Event No	8	Not applicable	<a href="#">more</a>
V565 — Secondary CDC Case Vehicle - Impact Speed	998	Not Applicable	<a href="#">more</a>
V566 — Secondary CDC Case Vehicle - Estimated By	8	Not applicable (no vehicle/no impact)	<a href="#">more</a>
V567 — Secondary CDC Case Vehicle -crush	998	Not Applicable	<a href="#">more</a>
V568 — Secondary CDC Case Vehicle -clock #1	98	Not Applicable	<a href="#">more</a>
V569 — Secondary CDC Case Vehicle letter 1 #1	00	Missing Data/Not applicable	<a href="#">more</a>
V570 — Secondary CDC Case Vehicle letter 2 #1	00	Missing Data/Not applicable	<a href="#">more</a>
V571 — Secondary CDC Case Vehicle letter 3 #1	00	Missing Data/Not applicable	<a href="#">more</a>
V572 — Secondary CDC Case Vehicle letter 4 #1	00	Missing Data/Not applicable	<a href="#">more</a>
V573 — Secondary CDC Case Vehicle Extent #1	00	Missing Data/Not applicable	<a href="#">more</a>
V574 — Secondary CDC Case Vehicle -CDC #1	9800000	—	—
V576 — Secondary CDC Case Vehicle letter 1 #2	00	Missing Data/Not applicable	<a href="#">more</a>
V577 — Secondary CDC Case	00	Missing Data/Not applicable	<a href="#">more</a>

Vehicle letter 2 #2			
V578 — Secondary CDC Case Vehicle letter 3 #2	00	Missing Data/Not applicable	<a href="#">more</a>
V579 — Secondary CDC Case Vehicle letter 4 #2	00	Missing Data/Not applicable	<a href="#">more</a>
V580 — Secondary CDC Case Vehicle Extent #2	00	Missing Data/Not applicable	<a href="#">more</a>
V581 — Secondary CDC Case Vehicle -CDC #2	9800000	—	—
V582 — Secondary CDC Contacted Vehicle - Impact Speed	998	Not Applicable	<a href="#">more</a>
V583 — Secondary CDC Contacted Vehicle - Estimated By	8	Not applicable (no vehicle/no impact)	<a href="#">more</a>
V584 — Secondary CDC Contacted Vehicle -crush	998	Not Applicable	<a href="#">more</a>
V585 — Secondary CDC Contacted Vehicle -clock #1	98	Not Applicable	<a href="#">more</a>
V586 — Secondary CDC Contacted Vehicle letter 1 #1	00	Missing Data/Not applicable	<a href="#">more</a>
V587 — Secondary CDC Contacted Vehicle letter 2 #1	00	Missing Data/Not applicable	<a href="#">more</a>
V588 — Secondary CDC Contacted Vehicle letter 3 #1	00	Missing Data/Not applicable	<a href="#">more</a>
V589 — Secondary CDC Contacted Vehicle letter 4 #1	00	Missing Data/Not applicable	<a href="#">more</a>
V590 — Secondary CDC Contacted Vehicle Extent #1	00	Missing Data/Not applicable	<a href="#">more</a>
V591 — Secondary CDC Contacted Vehicle -CDC #1	9800000	—	—
V593 — Secondary CDC Contacted Vehicle letter 1 #2	00	Missing Data/Not applicable	<a href="#">more</a>
V594 — Secondary CDC Contacted Vehicle letter 2 #2	00	Missing Data/Not applicable	<a href="#">more</a>
V595 — Secondary CDC Contacted Vehicle letter 3 #2	00	Missing Data/Not applicable	<a href="#">more</a>
V596 — Secondary CDC Contacted Vehicle letter 4 #2	00	Missing Data/Not applicable	<a href="#">more</a>
V597 — Secondary CDC Contacted Vehicle Extent #2	00	Missing Data/Not applicable	<a href="#">more</a>
V598 — Secondary CDC Contacted Vehicle -CDC #2	9800000	—	—

## Crash Severity

[Back to Top](#)

Variable Number and Name	Code Value	Code Description	Other Options
V601 — Case Vehicle Primary Impact Number	1	—	—
V602 — Primary Impact Total Delta-V	035 kph	—	—
V603 — Primary Case Vehicle Reconstructed Longitudinal Delta-V	-035 kph	—	—
V604 — Primary Case Vehicle Reconstructed Lateral Delta-V	0000 kph	—	—
V605 — Primary Case Vehicle Reconstructed Crush Energy	0077 kJ	—	—
V606 — Primary Impact Case Vehicle - reconstruction	22	Reconstructed, moderate confidence level	<a href="#">more</a>
V607 — Primary Case Vehicle Reconstruction Mode	2	CDC & detailed damage	<a href="#">more</a>
V608 — Primary Contacted Vehicle Reconstructed Total Delta-V	888	N/A	<a href="#">more</a>
	8888		

V609 — Primary Contacted Vehicle Reconstructed Longitudinal Delta-V			—	—
V610 — Primary Contacted Vehicle Reconstructed Lateral Delta- V	8888		—	—
V611 — Primary Contacted Vehicle Reconstructed Crush Energy	8888		—	—
V612 — Case Vehicle Secondary Impact Number	8		—	—
V613 — Secondary Case Vehicle Reconstructed Total Delta-V	888	N/A		<a href="#">more</a>
V614 — Secondary Case Vehicle Reconstructed Longitudinal Delta-V	8888		—	—
V615 — Secondary Case Vehicle Reconstructed Lateral Delta- V	8888		—	—
V616 — Secondary Case Vehicle Reconstructed Crush Energy	8888		—	—
V617 —	88			

Secondary Case Vehicle Reconstruction Note		—	—
V618 — Secondary Case Vehicle Reconstruction Mode	8	Not applicable	<a href="#">more</a>
V619 — Secondary Contacted Vehicle Reconstructed Total Delta-V	888	N/A	<a href="#">more</a>
V620 — Secondary Contacted Vehicle Reconstructed Longitudinal Delta-V	8888	—	—
V621 — Secondary Contacted Vehicle Reconstructed Lateral Delta-V	8888	—	—
V622 — Secondary Contacted Vehicle Reconstructed Crush Energy	8888	—	—
V623 — Case Vehicle Primary Impact Number	1	—	—
V624 — Primary Case Vehicle Reconstructed Total EBS	035 kph	—	—
V625 — Primary Case Vehicle	-035 kph		



Reconstructed Longitudinal EBS		—	—
V626 — Primary Case Vehicle Reconstructed Lateral EBS	0000 kph	—	—
V627 — Primary Case Vehicle Reconstructed Crush Energy	0077 kJ	—	—
V628 — Primary Case Vehicle Reconstruction Note	22	Reconstructed, moderate confidence level	<a href="#">more</a>
V629 — Primary Case Vehicle Reconstruction Mode	2	CDC & detailed damage	<a href="#">more</a>
V630 — Primary Contacted Vehicle Reconstruction Total EBS	888	N/A	<a href="#">more</a>
V631 — Primary Contacted Vehicle Reconstruction Longitudinal EBS	8888	—	—
V632 — Primary Contacted Vehicle Reconstruction Lateral EBS	8888	—	—
V633 — Primary Contacted Vehicle Reconstruction Crush Energy	8888	—	—

V634 — Case Vehicle Secondary Impact Number	8	Not applicable	<a href="#">more</a>
V635 — Secondary Case Vehicle Reconstruction Total EBS	888	N/A	<a href="#">more</a>
V636 — Secondary Case Vehicle Reconstruction Longitudinal EBS	8888	—	—
V637 — Secondary Case Vehicle Reconstruction Lateral EBS	8888	—	—
V638 — Secondary Case Vehicle Reconstruction Crush Energy	8888	—	—
V639 — Secondary Case Vehicle Reconstruction Note	88	—	—
V640 — Secondary Case Vehicle Reconstruction Mode	8	Not applicable	<a href="#">more</a>
V641 — Secondary Contacted Vehicle Reconstruction Total EBS	888	N/A	<a href="#">more</a>
V642 — Secondary Contacted Vehicle Reconstruction Longitudinal	8888	—	—

EBS			
V643 — Secondary Contacted Vehicle Reconstruction Lateral EBS	8888	—	—
V644 — Secondary Contacted Vehicle Reconstruction Crush Energy	8888	—	—
V645 — Case Vehicle Reconstructed Impact Number	1	—	—
V646 — Case Vehicle Impact 1 Plane	1	Bumper	<a href="#">more</a>
V647 — Case Vehicle Impact 1 Direct Damage Length [DDL]	160 cm	—	—
V648 — Case Vehicle Impact 1 Max Crush	051 cm	—	—
V649 — Case Vehicle Impact 1 Field-L	094 cm	—	—
V650 — Case Vehicle Impact 1 C1	000 cm	No Crush	<a href="#">more</a>
V651 — Case Vehicle Impact 1 C2	016 cm	—	—
V652 — Case Vehicle Impact 1 C3	032 cm	—	—
V653 — Case Vehicle Impact 1 C4	051 cm	—	—

V654 — Case Vehicle Impact 1 C5	027 cm	—	—
V655 — Case Vehicle Impact 1 C6	013 cm	—	—
V656 — Case Vehicle Impact 1 +/- D	0000 cm	—	—
V657 — Case Vehicle Reconstructed Impact Number	2	—	—
V658 — Case Vehicle Impact 2 Plane	8	Not applicable	<a href="#">more</a>
V659 — Case Vehicle Impact 2 Direct Damage Length [DDL]	998	Not applicable	<a href="#">more</a>
V660 — Case Vehicle Impact 2 Max Crush	998	Not applicable	<a href="#">more</a>
V661 — Case Vehicle Impact 2 Field-L	998	Not applicable	<a href="#">more</a>
V662 — Case Vehicle Impact 2 C1	998	Not applicable	<a href="#">more</a>
V663 — Case Vehicle Impact 2 C2	998	Not applicable	<a href="#">more</a>
V664 — Case Vehicle Impact 2 C3	998	Not applicable	<a href="#">more</a>
V665 — Case Vehicle Impact 2 C4	998	Not applicable	<a href="#">more</a>
V666 — Case Vehicle Impact 2 C5	998	Not applicable	<a href="#">more</a>

V667 — Case Vehicle Impact 2 C6	998	Not applicable	<a href="#">more</a>
V668 — Case Vehicle Impact 2 +/- D	9998	—	—
V669 — Other Vehicle Reconstructed Impact Number	9	Unknown	<a href="#">more</a>
V670 — Other Vehicle Impact 1 Plane	9	Unknown	<a href="#">more</a>
V671 — Other Vehicle Impact 1 Direct Damage Length [DDL]	999	Unknown	<a href="#">more</a>
V672 — Other Vehicle Impact 1 Max Crush	999	Unknown	<a href="#">more</a>
V673 — Other Vehicle Impact 1 Field-L	999	Unknown	<a href="#">more</a>
V674 — Other Vehicle Impact 1 C1	999	Unknown	<a href="#">more</a>
V675 — Other Vehicle Impact 1 C2	999	Unknown	<a href="#">more</a>
V676 — Other Vehicle Impact 1 C3	999	Unknown	<a href="#">more</a>
V677 — Other Vehicle Impact 1 C4	999	Unknown	<a href="#">more</a>
V678 — Other Vehicle Impact 1 C5	999	Unknown	<a href="#">more</a>
V679 — Other Vehicle Impact 1 C6	999	Unknown	<a href="#">more</a>

V680 — Other Vehicle Impact 1 +/- D	9999	—	—
V681 — Other Vehicle Reconstructed Impact Number	9	Unknown	<a href="#">more</a>
V682 — Other Vehicle Impact 2 Plane	9	Unknown	<a href="#">more</a>
V683 — Other Vehicle Impact 2 Direct Damage Length [DDL]	999	Unknown	<a href="#">more</a>
V684 — Other Vehicle Impact 2 Max Crush	999	Unknown	<a href="#">more</a>
V685 — Other Vehicle Impact 2 Field-L	999	Unknown	<a href="#">more</a>
V686 — Other Vehicle Impact 2 C1	999	Unknown	<a href="#">more</a>
V687 — Other Vehicle Impact 2 C2	999	Unknown	<a href="#">more</a>
V688 — Other Vehicle Impact 2 C3	999	Unknown	<a href="#">more</a>
V689 — Other Vehicle Impact 2 C4	999	Unknown	<a href="#">more</a>
V690 — Other Vehicle Impact 2 C5	999	Unknown	<a href="#">more</a>
V691 — Other Vehicle Impact 2 C6	999	Unknown	<a href="#">more</a>
V692 — Other Vehicle Impact 2 +/- D	9999	—	—

## Case Vehicle Tires & Rims

[Back to Top](#)

Variable Number and Name	Code Value	Code Description	Other Options
V701 — Left Front Wheel Damaged	0	No	<a href="#">more</a>
V702 — Right Front Wheel Damaged	1	Yes	<a href="#">more</a>
V703 — Right Rear Wheel Damaged	0	No	<a href="#">more</a>
V704 — Left Rear Wheel Damaged	0	No	<a href="#">more</a>
V705 — Left Front Tire Tread Type	4	All Weather	<a href="#">more</a>
V706 — Right Front Tire Tread Type	4	All Weather	<a href="#">more</a>
V707 — Right Rear Tire Tread Type	4	All Weather	<a href="#">more</a>
V708 — Left Rear Tire Tread Type	4	All Weather	<a href="#">more</a>
V709 — Left Front Carcass Construction	3	Radial	<a href="#">more</a>
V710 — Right Front Carcass Construction	3	Radial	<a href="#">more</a>
V711 — Right Rear Carcass Construction	3	Radial	<a href="#">more</a>
V712 — Left Rear Carcass Construction	3	Radial	<a href="#">more</a>
V717 — Left Front Tire Size	20560R16	—	—
V718 — Right Front Tire Size	20560R16	—	—
V719 — Right Rear Tire Size	20560R16	—	—
V720 — Left Rear Tire Size	20560R16	—	—

## Case Vehicle Fuel, Tank, Fire

[Back to Top](#)

Variable Number and Name	Code Value	Code Description	Other Options
V801 — Propulsive Fuel Type	1	Gasoline	<a href="#">more</a>
V802 — Main Tank Location	322	Within frame/centered laterally - within vertically	<a href="#">more</a>
V803 — Main Filler Cap Location	213	Left of frame laterally - above vertically	<a href="#">more</a>
V804 — Main Tank Material	3	Plastic	<a href="#">more</a>

V805 — Aux Tank Type	8	Not applicable (not equipped)	<a href="#">more</a>
V806 — Aux Tank Location	888	Not applicable (not equipped)	<a href="#">more</a>
V807 — Aux Filler Cap Location	888	Not applicable (not equipped)	<a href="#">more</a>
V808 — Aux Tank Material	8	Not applicable	<a href="#">more</a>
V901 — Fuel Leakage From Crash	0	No	<a href="#">more</a>
V1001 — Fire In Or On Case Vehicle	0	No	<a href="#">more</a>

## Case Vehicle Exterior

[Back to Top](#)

Variable Number and Name	Code Value	Code Description	Other Options
V1101 — Hood Latch Released	0	No	<a href="#">more</a>
V1102 — Hood Latch Damaged	1	Yes	<a href="#">more</a>
V1103 — Hood Latch Jammed	1	Yes	<a href="#">more</a>
V1104 — Left Hood Hinge Damaged	9	Unknown	<a href="#">more</a>
V1105 — Left Hood Hinge Separated	0	No	<a href="#">more</a>
V1106 — Right Hood Hinge Damaged	1	Yes	<a href="#">more</a>
V1107 — Right Hood Hinge Separated	0	No	<a href="#">more</a>
V1108 — Hood Remained On Vehicle	1	Yes	<a href="#">more</a>
V1109 — Rear Hood Edge Elevated	1	Yes	<a href="#">more</a>
V1110 — Edge Contacted Windshield	0	No	<a href="#">more</a>
V1111 — Edge Penetrated Windshield	8	Not applicable	<a href="#">more</a>
V1112 — Hood Latch Location	1	Front of Vehicle	<a href="#">more</a>
V1113 — Eng/Transmissn Mount Separation	0	No	<a href="#">more</a>
V1114 — Steerng Column Flex Coupling	9	Unknown if equipped	<a href="#">more</a>
V1115 — Steerng Column Coupling Damaged	9	Unknown	<a href="#">more</a>
V1116 — Steerng Column Coupling Separated	9	Unknown	<a href="#">more</a>
V1117 — Eng Comp Telescopng Unit	88	Not collected	<a href="#">more</a>
V1118 — Comp Orig/Telescopd Diff	888	Not collected	<a href="#">more</a>
V1119 — Left Side Body Mount Separation	8	Not applicable (unitized)	<a href="#">more</a>
V1120 — Upper Left A-pillar Separation	0	No	<a href="#">more</a>
V1121 — Lower Left A-pillar	0	No	<a href="#">more</a>



Separation			
V1122 — Upper Left B-pillar Separation	0	No	<a href="#">more</a>
V1123 — Lower Left B-pillar Separation	0	No	<a href="#">more</a>
V1124 — Upper Left C-pillar Separation	0	No	<a href="#">more</a>
V1125 — Lower Left C-pillar Separation	0	No	<a href="#">more</a>
V1126 — Upper Left D-pillar Separation	8	Not applicable (not equipped)	<a href="#">more</a>
V1127 — Lower Left D-pillar Separation	8	Not applicable (not equipped)	<a href="#">more</a>
V1128 — Left Front Door Opening Cause	0	Door did not open	<a href="#">more</a>
V1129 — Left Rear Door Opening Cause	0	Door did not open	<a href="#">more</a>
V1130 — Left Front Door Jammed Closed	0	No	<a href="#">more</a>
V1131 — Left Rear Door Jammed Closed	0	No	<a href="#">more</a>
V1132 — Rear Door Type	0	No door (includes pickups)	<a href="#">more</a>
V1133 — Rear Door Opening Cause	8	Not applicable (no rear door)	<a href="#">more</a>
V1134 — Rear Door Jammed Closed	8	Not applicable (no rear door)	<a href="#">more</a>
V1135 — Luggage Partition Damagd	8	Not applicable	<a href="#">more</a>
V1136 — Spare Tire Status	8	Not collected	<a href="#">more</a>
V1137 — Trailer Hitch Type	0	No hitch	<a href="#">more</a>
V1138 — Trailer Type	0	No trailer	<a href="#">more</a>
V1139 — Right Side Body Mount Separation	8	Not applicable (unitized)	<a href="#">more</a>
V1140 — Upper Right A-pillar Separation	0	No	<a href="#">more</a>
V1141 — Lower Right A-pillar Separation	0	No	<a href="#">more</a>
V1142 — Upper Right B-pillar Separation	0	No	<a href="#">more</a>
V1143 — Lower Right B-pillar Separation	0	No	<a href="#">more</a>
V1144 — Upper Right C-pillar Separation	0	No	<a href="#">more</a>
V1145 — Lower Right C-pillar Separation	0	No	<a href="#">more</a>

V1146 — Upper Right D-pillar Separation	8	Not applicable (not equipped)	<a href="#">more</a>
V1147 — Lower Right D-pillar Separation	8	Not applicable (not equipped)	<a href="#">more</a>
V1148 — Right Front Door Opening Cause	00	Door did not open	<a href="#">more</a>
V1149 — Right Rear Door Opening Cause	00	Door did not open	<a href="#">more</a>
V1150 — Right Front Door Jammed Closed	0	No	<a href="#">more</a>
V1151 — Right Rear Door Jammed Closed	0	No	<a href="#">more</a>
V1152 — Van Rear Door Type	8	Not applicable (not a van)	<a href="#">more</a>
V1153 — Windshield Cracked		Yes	<a href="#">more</a>
V1154 — Windshield Broken	0	No	<a href="#">more</a>
V1155 — Windshield Cracked or Broken by Occupant	1	Yes	<a href="#">more</a>
V1156 — Bond Separation Extent	8	Not applicable	<a href="#">more</a>
V1157 — Windshield Code		—	—
V1158 — Did Sun/T Roof Open	0	No	<a href="#">more</a>

**Case Vehicle  
Steering  
Column/Rim**

[Back to Top](#)

Variable Number and Name	Code Value	Code Description	Other Options
V1201 — Steering Wheel Rim Damage	2	Severely bent	<a href="#">more</a>
V1202 — Number of Steering Wheel Spokes	4	4 spokes	<a href="#">more</a>
V1203 — Steering Wheel Spoke Damage	1	Deformed slightly	<a href="#">more</a>
V1204 — Column Tilt Feature	2	Up	<a href="#">more</a>

V1205 — Column Swing-away Feature	0	Not equipped	<a href="#">more</a>
V1206 — Column Telescoping Feature	1	Yes, equipped	<a href="#">more</a>
V1207 — Wheel Energy Absorb Device	8	Not collected	<a href="#">more</a>
V1208 — Wheel Ea Orig/Damaged Diff	888	Not collected	<a href="#">more</a>
V1209 — Column Energy Absorb Device	88	Not collected	<a href="#">more</a>
V1210 — Column Ea Orig/Comprss Diff	888	Not collected	<a href="#">more</a>
V1211 — Shear Capsule Separation	888	Not collected	<a href="#">more</a>
V1212 — Column Vertical Rotation	0	No apparent rotation	<a href="#">more</a>
V1213 — Column Lateral Rotation	0	No apparent rotation	<a href="#">more</a>
V1214 — Steering Wheel Hub Damage	3	Other	<a href="#">more</a>

## Case Vehicle Intrusion



Click for intrusion figures

[Back to Top](#)

Variable Number and Name	Code Value	Code Description	Other Options
V1301 — Occupant Compartment Intrusion	0	No	<a href="#">more</a>
V1302 — Was Intrusion Catastrophic	8	Not applicable	<a href="#">more</a>
V1303 — Intrusion Number 01	00	No Intrusion, None	<a href="#">more</a>
V1304 — Intrusion 01 Occupant Space Number	00	No Intrusion, None	<a href="#">more</a>
V1305 — Intrusion 01 Intruding Object	00	No Intrusion, None	<a href="#">more</a>
V1306 — Intrusion 01 Assoc Event Number	0	No Intrusion, None	<a href="#">more</a>
V1307 — Intrusion 01 Max Intrusion X-axis	00 cm	0 cm or No Intrusion	<a href="#">more</a>
V1308 — Intrusion 01 Max Intrusion Y-axis	00 cm	0 cm or No Intrusion	<a href="#">more</a>
V1309 — Intrusion 01 Max Intrusion Z-axis	00 cm	0 cm or No Intrusion	<a href="#">more</a>
V1310 — Intrusion 01 Occupant Number	00	No contact or no intrusion	<a href="#">more</a>
V1311 — Intrusion 01 Injury Number	00	No injury or no intrusion	<a href="#">more</a>

V1312 — Intrusion 01 Occupant Number	00	No contact or no intrusion	<a href="#">more</a>
V1313 — Intrusion 01 Injury Number	99	Contact, injury unknown or data not collected	<a href="#">more</a>
V1314 — Intrusion Number 02	00	No Intrusion, None	<a href="#">more</a>
V1315 — Intrusion 02 Occupant Space Number	00	No Intrusion, None	<a href="#">more</a>
V1316 — Intrusion 02 Intruding Object	00	No Intrusion, None	<a href="#">more</a>
V1317 — Intrusion 02 Assoc Event Number	0	No Intrusion, None	<a href="#">more</a>
V1318 — Intrusion 02 Max Intrusion X-axis	00 cm	0 cm or No Intrusion	<a href="#">more</a>
V1319 — Intrusion 02 Max Intrusion Y-axis	00 cm	0 cm or No Intrusion	<a href="#">more</a>
V1320 — Intrusion 02 Max Intrusion Z-axis	00 cm	0 cm or No Intrusion	<a href="#">more</a>
V1321 — Intrusion 02 Occupant Number	00	No contact or no intrusion	<a href="#">more</a>
V1322 — Intrusion 02 Injury Number	00	No injury or no intrusion	<a href="#">more</a>
V1323 — Intrusion 02 Occupant Number	00	No contact or no intrusion	<a href="#">more</a>
V1324 — Intrusion 02 Injury Number	99	Contact, injury unknown or data not collected	<a href="#">more</a>
V1325 — Intrusion Number 03	00	No Intrusion, None	<a href="#">more</a>
V1326 — Intrusion 03 Occupant Space Number	00	No Intrusion, None	<a href="#">more</a>
V1327 — Intrusion 03 Intruding Object	00	No Intrusion, None	<a href="#">more</a>
V1328 — Intrusion 03 Assoc Event Number	0	No Intrusion, None	<a href="#">more</a>
V1329 — Intrusion 03 Max Intrusion X-axis	00 cm	0 cm or No Intrusion	<a href="#">more</a>
V1330 — Intrusion 03 Max Intrusion Y-axis	00 cm	0 cm or No Intrusion	<a href="#">more</a>
V1331 — Intrusion 03 Max Intrusion Z-axis	00 cm	0 cm or No Intrusion	<a href="#">more</a>
V1332 — Intrusion 03 Occupant Number	00	No contact or no intrusion	<a href="#">more</a>
V1333 — Intrusion 03 Injury Number	00	No injury or no intrusion	<a href="#">more</a>
V1334 — Intrusion 03 Occupant Number	00	No contact or no intrusion	<a href="#">more</a>
	99	Contact, injury unknown or data	

V1335 — Intrusion 03 Injury Number		not collected	<a href="#">more</a>
V1336 — Intrusion Number 04	00	No Intrusion, None	<a href="#">more</a>
V1337 — Intrusion 04 Occupant Space Number	00	No Intrusion, None	<a href="#">more</a>
V1338 — Intrusion 04 Intruding Object	00	No Intrusion, None	<a href="#">more</a>
V1339 — Intrusion 04 Assoc Event Number	0	No Intrusion, None	<a href="#">more</a>
V1340 — Intrusion 04 Max Intrusion X-axis	00 cm	0 cm or No Intrusion	<a href="#">more</a>
V1341 — Intrusion 04 Max Intrusion Y-axis	00 cm	0 cm or No Intrusion	<a href="#">more</a>
V1342 — Intrusion 04 Max Intrusion Z-axis	00 cm	0 cm or No Intrusion	<a href="#">more</a>
V1343 — Intrusion 04 Occupant Number	00	No contact or no intrusion	<a href="#">more</a>
V1344 — Intrusion 04 Injury Number	00	No injury or no intrusion	<a href="#">more</a>
V1345 — Intrusion 04 Occupant Number	00	No contact or no intrusion	<a href="#">more</a>
V1346 — Intrusion 04 Injury Number	99	Contact, injury unknown or data not collected	<a href="#">more</a>
V1347 — Intrusion Number 05	00	No Intrusion, None	<a href="#">more</a>
V1348 — Intrusion 05 Occupant Space Number	00	No Intrusion, None	<a href="#">more</a>
V1349 — Intrusion 05 Intruding Object	00	No Intrusion, None	<a href="#">more</a>
V1350 — Intrusion 05 Assoc Event Number	0	No Intrusion, None	<a href="#">more</a>
V1351 — Intrusion 05 Max Intrusion X-axis	00 cm	0 cm or No Intrusion	<a href="#">more</a>
V1352 — Intrusion 05 Max Intrusion Y-axis	00 cm	0 cm or No Intrusion	<a href="#">more</a>
V1353 — Intrusion 05 Max Intrusion Z-axis	00 cm	0 cm or No Intrusion	<a href="#">more</a>
V1354 — Intrusion 05 Occupant Number	00	No contact or no intrusion	<a href="#">more</a>
V1355 — Intrusion 05 Injury Number	00	No injury or no intrusion	<a href="#">more</a>
V1356 — Intrusion 05 Occupant Number	00	No contact or no intrusion	<a href="#">more</a>
V1357 — Intrusion 05 Injury Number	99	Contact, injury unknown or data not collected	<a href="#">more</a>
V1358 — Intrusion Number 06	00	No Intrusion, None	<a href="#">more</a>

V1359 — Intrusion 06 Occupant Space Number	00	No Intrusion, None	<a href="#">more</a>
V1360 — Intrusion 06 Intruding Object	00	No Intrusion, None	<a href="#">more</a>
V1361 — Intrusion 06 Assoc Event Number	0	No Intrusion, None	<a href="#">more</a>
V1362 — Intrusion 06 Max Intrusion X-axis	00 cm	0 cm or No Intrusion	<a href="#">more</a>
V1363 — Intrusion 06 Max Intrusion Y-axis	00 cm	0 cm or No Intrusion	<a href="#">more</a>
V1364 — Intrusion 06 Max Intrusion Z-axis	00 cm	0 cm or No Intrusion	<a href="#">more</a>
V1365 — Intrusion 06 Occupant Number	00	No contact or no intrusion	<a href="#">more</a>
V1366 — Intrusion 06 Injury Number	00	No injury or no intrusion	<a href="#">more</a>
V1367 — Intrusion 06 Occupant Number	00	No contact or no intrusion	<a href="#">more</a>
V1368 — Intrusion 06 Injury Number	99	Contact, injury unknown or data not collected	<a href="#">more</a>
V1369 — Intrusion Number 07	00	No Intrusion, None	<a href="#">more</a>
V1370 — Intrusion 07 Occupant Space Number	00	No Intrusion, None	<a href="#">more</a>
V1371 — Intrusion 07 Intruding Object	00	No Intrusion, None	<a href="#">more</a>
V1372 — Intrusion 07 Assoc Event Number	0	No Intrusion, None	<a href="#">more</a>
V1373 — Intrusion 07 Max Intrusion X-axis	00 cm	0 cm or No Intrusion	<a href="#">more</a>
V1374 — Intrusion 07 Max Intrusion Y-axis	00 cm	0 cm or No Intrusion	<a href="#">more</a>
V1375 — Intrusion 07 Max Intrusion Z-axis	00 cm	0 cm or No Intrusion	<a href="#">more</a>
V1376 — Intrusion 07 Occupant Number	00	No contact or no intrusion	<a href="#">more</a>
V1377 — Intrusion 07 Injury Number	00	No injury or no intrusion	<a href="#">more</a>
V1378 — Intrusion 07 Occupant Number	00	No contact or no intrusion	<a href="#">more</a>
V1379 — Intrusion 07 Injury Number	99	Contact, injury unknown or data not collected	<a href="#">more</a>
V1380 — Intrusion Number 08	00	No Intrusion, None	<a href="#">more</a>
V1381 — Intrusion 08 Occupant Space Number	00	No Intrusion, None	<a href="#">more</a>
V1382 — Intrusion 08 Intruding	00		

Object		No Intrusion, None	<a href="#">more</a>
V1383 — Intrusion 08 Assoc Event Number	0	No Intrusion, None	<a href="#">more</a>
V1384 — Intrusion 08 Max Intrusion X-axis	00 cm	0 cm or No Intrusion	<a href="#">more</a>
V1385 — Intrusion 08 Max Intrusion Y-axis	00 cm	0 cm or No Intrusion	<a href="#">more</a>
V1386 — Intrusion 08 Max Intrusion Z-axis	00 cm	0 cm or No Intrusion	<a href="#">more</a>
V1387 — Intrusion 08 Occupant Number	00	No contact or no intrusion	<a href="#">more</a>
V1388 — Intrusion 08 Injury Number	00	No injury or no intrusion	<a href="#">more</a>
V1389 — Intrusion 08 Occupant Number	00	No contact or no intrusion	<a href="#">more</a>
V1390 — Intrusion 08 Injury Number	99	Contact, injury unknown or data not collected	<a href="#">more</a>
V1391 — Intrusion Number 09	00	No Intrusion, None	<a href="#">more</a>
V1392 — Intrusion 09 Occupant Space Number	00	No Intrusion, None	<a href="#">more</a>
V1393 — Intrusion 09 Intruding Object	00	No Intrusion, None	<a href="#">more</a>
V1394 — Intrusion 09 Assoc Event Number	0	No Intrusion, None	<a href="#">more</a>
V1395 — Intrusion 09 Max Intrusion X-axis	00 cm	0 cm or No Intrusion	<a href="#">more</a>
V1396 — Intrusion 09 Max Intrusion Y-axis	00 cm	0 cm or No Intrusion	<a href="#">more</a>
V1397 — Intrusion 09 Max Intrusion Z-axis	00 cm	0 cm or No Intrusion	<a href="#">more</a>
V1398 — Intrusion 09 Occupant Number	00	No contact or no intrusion	<a href="#">more</a>
V1399 — Intrusion 09 Injury Number	00	No injury or no intrusion	<a href="#">more</a>
V1400 — Intrusion 09 Occupant Number	00	No contact or no intrusion	<a href="#">more</a>
V1401 — Intrusion 09 Injury Number	99	Contact, injury unknown or data not collected	<a href="#">more</a>
V1402 — Intrusion Number 10	00	No Intrusion, None	<a href="#">more</a>
V1403 — Intrusion 10 Occupant Space Number	00	No Intrusion, None	<a href="#">more</a>
V1404 — Intrusion 10 Intruding Object	00	No Intrusion, None	<a href="#">more</a>
V1405 — Intrusion 10 Assoc Event Number	0	No Intrusion, None	<a href="#">more</a>

V1406 — Intrusion 10 Max Intrusion X-axis	00 cm	0 cm or No Intrusion	<a href="#">more</a>
V1407 — Intrusion 10 Max Intrusion Y-axis	00 cm	0 cm or No Intrusion	<a href="#">more</a>
V1408 — Intrusion 10 Max Intrusion Z-axis	00 cm	0 cm or No Intrusion	<a href="#">more</a>
V1409 — Intrusion 10 Occupant Number	00	No contact or no intrusion	<a href="#">more</a>
V1410 — Intrusion 10 Injury Number	00	No injury or no intrusion	<a href="#">more</a>
V1411 — Intrusion 10 Occupant Number	00	No contact or no intrusion	<a href="#">more</a>
V1412 — Intrusion 10 Injury Number	99	Contact, injury unknown or data not collected	<a href="#">more</a>
V1413 — Door Intrusion Number 01	88	Not Applicable	<a href="#">more</a>
V1414 — Door Intrusion Number 01 Cause	8	Not applicable	<a href="#">more</a>
V1415 — Door Intrusion Number 02	88	Not Applicable	<a href="#">more</a>
V1416 — Door Intrusion Number 02 Cause	8	Not applicable	<a href="#">more</a>
V1417 — Door Intrusion Number 03	88	Not Applicable	<a href="#">more</a>
V1418 — Door Intrusion Number 03 Cause	8	Not applicable	<a href="#">more</a>
V1419 — Door Intrusion 01 Component	88	Not Applicable	<a href="#">more</a>
V1420 — Door Intrusion 01 Component Damaged 1	8	Not Applicable	<a href="#">more</a>
V1421 — Door Intrusion 01 Component Damaged 2	8	Not Applicable	<a href="#">more</a>
V1422 — Door Intrusion 02 Component	88	Not Applicable	<a href="#">more</a>
V1423 — Door Intrusion 02 Component Damaged 1	8	Not Applicable	<a href="#">more</a>
V1424 — Door Intrusion 02 Component Damaged 2	8	Not Applicable	<a href="#">more</a>
V1425 — Door Intrusion 03 Component	88	Not Applicable	<a href="#">more</a>
V1426 — Door Intrusion 03 Component Damaged 1	8	Not Applicable	<a href="#">more</a>
V1427 — Door Intrusion 03 Component Damaged 2	8	Not Applicable	<a href="#">more</a>
V1428 — Door Intrusion 04 Component	88	Not Applicable	<a href="#">more</a>
V1429 — Door Intrusion 04	8		



Component Damaged 1		Not Applicable	<a href="#">more</a>
V1430 — Door Intrusion 04 Component Damaged 2	8	Not Applicable	<a href="#">more</a>

**Case Vehicle  
Airbag(s)**



[Click for Driver airbag figure](#)



[Click for Passenger airbag  
figure](#)

[Back to  
Top](#)

Variable Number and Name	Code Value	Code Description	Other Options
V1501 — Driver Airbag Equipped	1	Yes	<a href="#">more</a>
V1502 — Driver Airbag Deployed	1	Yes	<a href="#">more</a>
V1503 — Driver Airbag Condition	0	No Damage	<a href="#">more</a>
V1504 — Passenger Airbag Equip	1	Yes	<a href="#">more</a>
V1505 — Passenger Airbag Deployed	1	Yes	<a href="#">more</a>
V1506 — Passenger Airbag Condition	0	No Damage	<a href="#">more</a>
V1507 — Steering Wheel Airbag Tether	1	Yes	<a href="#">more</a>
V1508 — Driver Airbag Marked By Contact	1	Yes	<a href="#">more</a>
V1509 — Passenger Airbag Tether	0	No	<a href="#">more</a>
V1510 — Passenger Airbag Marked By Contact	0	No	<a href="#">more</a>

**Case Vehicle  
Interior**

[Back to Top](#)

Variable Number and Name	Code Value	Code Description	Other Options
V1601 — Left Front Door Damaged	0	No	<a href="#">more</a>
V1602 — Right Front Door Damaged	0	No	<a href="#">more</a>
V1603 — Left Front Hardware Damaged	0	No	<a href="#">more</a>
V1604 — Right Front Hardware Damaged	0	No	<a href="#">more</a>
V1605 — Left Front Armrest Damaged	0	No	<a href="#">more</a>
V1606 — Right Front Armrest Damaged	0	No	<a href="#">more</a>
	0		

V1607 — Left Front Glass Damaged		No	<a href="#">more</a>
V1608 — Right Front Glass Damaged	0	No	<a href="#">more</a>
V1609 — Left Rear Door Area Damaged	0	No	<a href="#">more</a>
V1610 — Right Rear Door Area Damaged	0	No	<a href="#">more</a>
V1611 — Left Rear Hardware Damaged	0	No	<a href="#">more</a>
V1612 — Right Rear Hardware Damaged	0	No	<a href="#">more</a>
V1613 — Left Rear Armrest Damaged	0	No	<a href="#">more</a>
V1614 — Right Rear Armrest Damaged	0	No	<a href="#">more</a>
V1615 — Left Rear Glass Damaged	0	No	<a href="#">more</a>
V1616 — Right Rear Glass Damaged	0	No	<a href="#">more</a>
V1617 — Left Roof Side Rail Damaged	0	No	<a href="#">more</a>
V1618 — Right Roof Side Rail Damaged	0	No	<a href="#">more</a>
V1619 — Left B-pillar Damaged	0	No	<a href="#">more</a>
V1620 — Right B-pillar Damaged	0	No	<a href="#">more</a>
V1621 — Left C-pillar Damaged	0	No	<a href="#">more</a>
V1622 — Right C-pillar Damaged	0	No	<a href="#">more</a>
V1623 — Left D-pillar Damaged	8	Not applicable	<a href="#">more</a>
V1624 — Right D-pillar Damaged	8	Not applicable	<a href="#">more</a>
V1625 — Left Headlining Damaged	0	No	<a href="#">more</a>
V1626 — Right Headlining Damaged	0	No	<a href="#">more</a>
V1627 — Left Roof Structure Damaged	0	No	<a href="#">more</a>
V1628 — Right Roof Structure Damaged	0	No	<a href="#">more</a>
V1629 — Left T/Sun Roof Damaged	0	No	<a href="#">more</a>
V1630 — Right T/Sun Roof Damaged	0	No	<a href="#">more</a>
V1631 — Other Left Side Item Damaged	8	Not applicable	<a href="#">more</a>
V1632 — Other Right Side Item Damaged	8	Not applicable	<a href="#">more</a>
V1633 — Foot Controls Damaged	0	No	<a href="#">more</a>
V1634 — Ignition Key Damaged	0	No	<a href="#">more</a>
V1635 — Rear View Mirror Damaged	1	Yes	<a href="#">more</a>

V1636 — Sunvisor/Fitting Damaged	3	No, occupant contact	<a href="#">more</a>
V1637 — Windshield Molding Damaged	0	No	<a href="#">more</a>
V1638 — Left A-pillar Damaged	0	No	<a href="#">more</a>
V1639 — Right A-pillar Damaged	0	No	<a href="#">more</a>
V1640 — Center Console Damaged	1	Yes	<a href="#">more</a>
V1641 — Transmission Lever Damaged	0	No	<a href="#">more</a>
V1642 — Horn/Spoke Shroud Damaged	1	Yes	<a href="#">more</a>
V1643 — Upper Panel Damaged	0	No	<a href="#">more</a>
V1644 — Mid Panel Damaged	0	No	<a href="#">more</a>
V1645 — Lower Panel Damaged	4	Yes, occupant contact	<a href="#">more</a>
V1646 — Ashtray Damaged	0	No	<a href="#">more</a>
V1647 — Control Knob/Lever Damaged	1	Yes	<a href="#">more</a>
V1648 — Glove Compartment Area Damaged	0	No	<a href="#">more</a>
V1649 — Instruments Damaged	0	No	<a href="#">more</a>
V1650 — Park Brake Release Damaged	0	No	<a href="#">more</a>
V1651 — Park Brake Pedal Damaged	8	Not applicable	<a href="#">more</a>
V1652 — A/C Or Upper Vent Damaged	0	No	<a href="#">more</a>
V1653 — Heater Or A/C Duct Damaged	0	No	<a href="#">more</a>
V1654 — Radio Damaged	1	Yes	<a href="#">more</a>
V1655 — Other Item Damaged	8	Not applicable	<a href="#">more</a>
V1656 — Rear Window Damaged	0	No	<a href="#">more</a>
V1657 — Rear Window Header Damaged	0	No	<a href="#">more</a>
V1658 — Vertical Console Damaged	1	Yes	<a href="#">more</a>
V1659 — Roof Console Damaged	8	Not applicable	<a href="#">more</a>

## Case Vehicle Seats

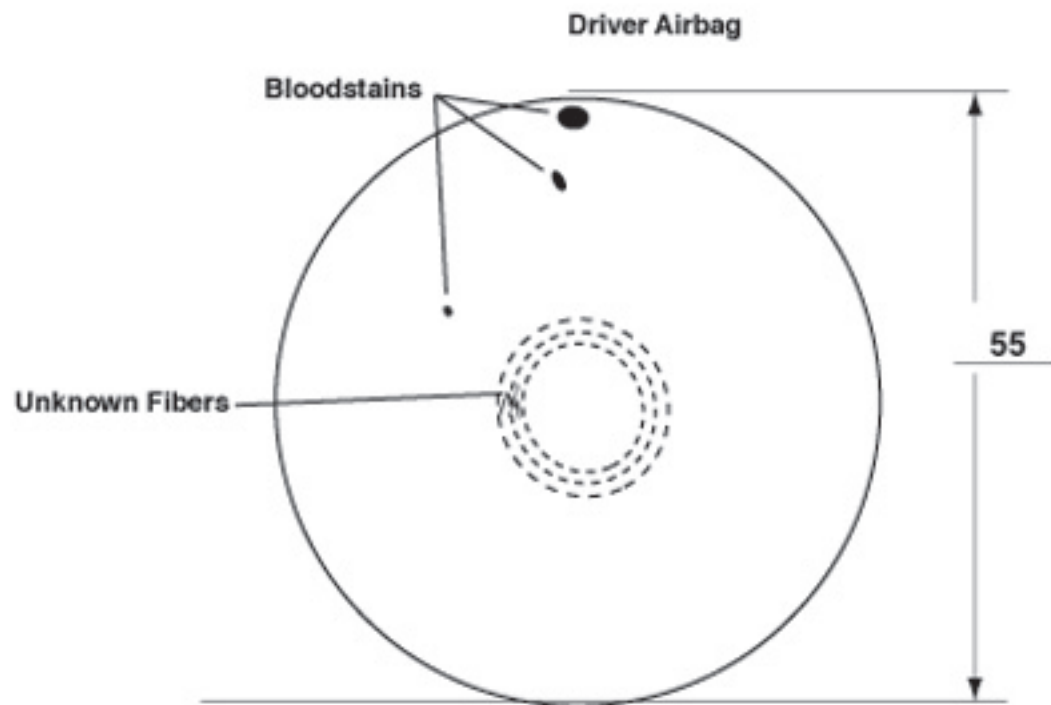
[Back to Top](#)

Variable Number and Name	Code Value	Code Description	Other Options
V1701 — Driver Front Seat Type	05	Bucket	<a href="#">more</a>
V1702 — Passenger Front Seat Type	05	Bucket	<a href="#">more</a>

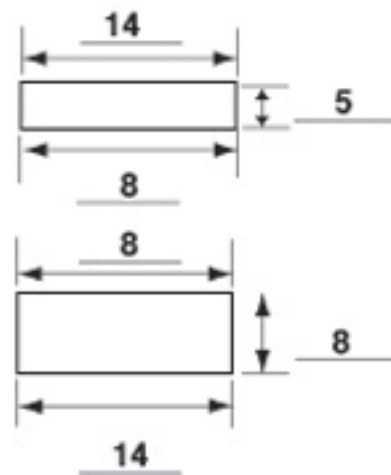
V1703 — Driver Seat Mount Type	1	Standard	<a href="#">more</a>
V1704 — Passenger Seat Mount Type	1	Standard	<a href="#">more</a>
V1705 — Driver Swivel Mechanism Equipped	0	No	<a href="#">more</a>
V1706 — Passenger Swivel Mechanism Equipped	0	No	<a href="#">more</a>
V1707 — Driver Seat Original Equipment	1	Yes	<a href="#">more</a>
V1708 — Passenger Seat Original Equipment	1	Yes	<a href="#">more</a>
V1709 — Driver Seat/Rear Occupant Contact	8	Not applicable	<a href="#">more</a>
V1710 — Passenger Seat/Rear Occupant Contact	8	Not applicable	<a href="#">more</a>
V1711 — Driver Seat Damage	0	None	<a href="#">more</a>
V1712 — Passenger Seat Damage	0	None	<a href="#">more</a>
V1713 — Center Front Armrest Damaged	1	Yes	<a href="#">more</a>
V1714 — Driver Seat Rotation	0	None apparent	<a href="#">more</a>
V1715 — Passenger Seat Rotation	0	None apparent	<a href="#">more</a>
V1716 — Driver Seat-back Type	3	Reclining	<a href="#">more</a>
V1717 — Passenger Seat-back Type	3	Reclining	<a href="#">more</a>
V1718 — Driver Seat-back Lock Type	1	Manual	<a href="#">more</a>
V1719 — Passenger Seat-back Lock Type	1	Manual	<a href="#">more</a>
V1720 — Driver Seat-back Lock Held	1	Yes	<a href="#">more</a>
V1721 — Passenger Seat-back Lock Held	1	Yes	<a href="#">more</a>
V1722 — Driver Recliner Mechanism Held	1	Yes	<a href="#">more</a>
V1723 — Passenger Recliner Mechanism Held	1	Yes	<a href="#">more</a>
V1724 — Driver Head Restraint Type	1	Adjustable	<a href="#">more</a>
V1725 — Passenger Head Restraint Type	1	Adjustable	<a href="#">more</a>
V1726 — Driver Head Rest Removed	0	No	<a href="#">more</a>
V1727 — Passenger Head Rest	0	No	<a href="#">more</a>

Removed			
V1728 — Driver Head Rest Adjustment	2	Down	<a href="#">more</a>
V1729 — Passenger Head Rest Adjustment	2	Down	<a href="#">more</a>
V1730 — Driver Head Rest Damage	0	None	<a href="#">more</a>
V1731 — Passenger Head Rest Damage	0	None	<a href="#">more</a>
V1732 — Driver Seat Adjustment Type	2	Power	<a href="#">more</a>
V1733 — Passenger Seat Adjustment Type	9	Unknown	<a href="#">more</a>
V1734 — Driver Seat Adjustment Provided	1	2-way	<a href="#">more</a>
V1735 — Passenger Seat Adjustment Provided	9	Unknown	<a href="#">more</a>
V1736 — Driver Seat Adjuster Damage	0	None	<a href="#">more</a>
V1737 — Passenger Seat Adjuster Damage	9	Unknown	<a href="#">more</a>
V1738 — Driver Seat Adjuster Separation	8	Not applicable	<a href="#">more</a>
V1739 — Passenger Seat Adjuster Separation	9	Unknown	<a href="#">more</a>
V1740 — Driver Seat Pre-crash Position	3	Rearward	<a href="#">more</a>
V1741 — Passenger Seat Pre-crash Position	9	Unknown	<a href="#">more</a>
V1742 — Left Rear Seat Type	1	Non-folding	<a href="#">more</a>
V1743 — Right Rear Seat Type	1	Non-folding	<a href="#">more</a>
V1744 — Left Rear Seat Damaged	0	None	<a href="#">more</a>
V1745 — Right Rear Seat Damaged	0	None	<a href="#">more</a>
V1746 — Center Rear Armrest Damaged	0	No	<a href="#">more</a>
V1747 — Left Rear Seat-back Left Lock Equipped	8	Not applicable	<a href="#">more</a>
V1748 — Right Rear Seat-back Left Lock Equipped	8	Not applicable	<a href="#">more</a>
V1749 — Left Rear Seat-back Left Lock Held	8	Not applicable	<a href="#">more</a>
V1750 — Right Rear Seat-back Left Lock Held	8	Not applicable	<a href="#">more</a>

V1751 — Left Rear Seat-back Right Lock Equipped	8	Not applicable	<a href="#">more</a>
V1752 — Right Rear Seat-back Right Lock Equipped	8	Not applicable	<a href="#">more</a>
V1753 — Left Rear Seat-back Right Lock Held	8	Not applicable	<a href="#">more</a>
V1754 — Right Rear Seat-back Right Lock Held	8	Not applicable	<a href="#">more</a>
V1755 — Left 3rd Seat Equipped	0	No	<a href="#">more</a>
V1756 — Right 3rd Seat Equipped	0	No	<a href="#">more</a>
V1757 — Left 3rd Seat Backrest Damaged	8	Not applicable	<a href="#">more</a>
V1758 — Right 3rd Seat Backrest Damaged	8	Not applicable	<a href="#">more</a>
V1759 — Left 3rd Seat Cushion Damaged	8	Not applicable	<a href="#">more</a>
V1760 — Right 3rd Seat Cushion Damaged	8	Not applicable	<a href="#">more</a>
V1761 — Rear Head Restraints	1	Equipped	<a href="#">more</a>



**Driver Airbag Doors**



H-Pattern

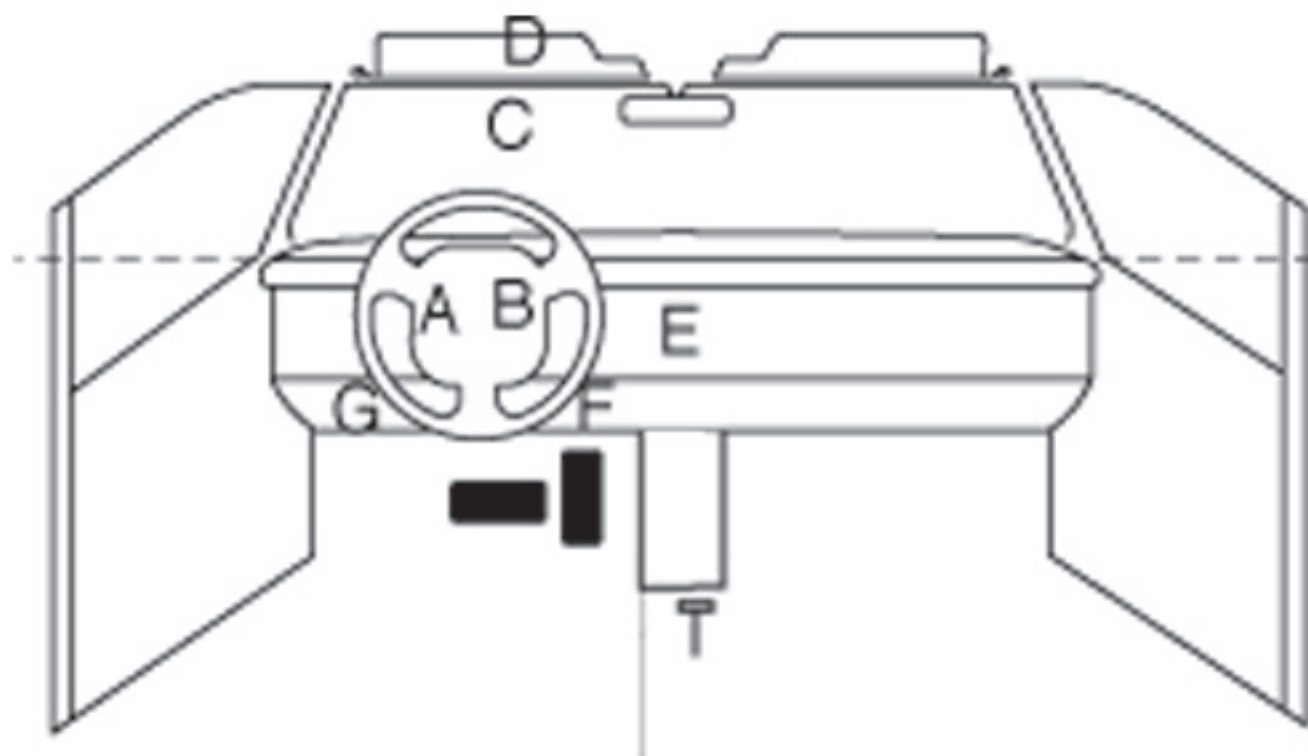
Vents:  Y  N

if yes, how many: 2

Tethers:  Y  N

if yes, how many: 2

@ 3 and 9 o'clock



- A = blood and foreign material on airbag
- B = steering-wheel rim deformed
- C = spiderweb crack in WS with hair deposit
- D = scuff on visor with hair
- E = foreign deposit center stack
- F = right knee bolster deformed
- G = left knee bolster deformed



1 = Definitely 2 = Probably 3 = Possible

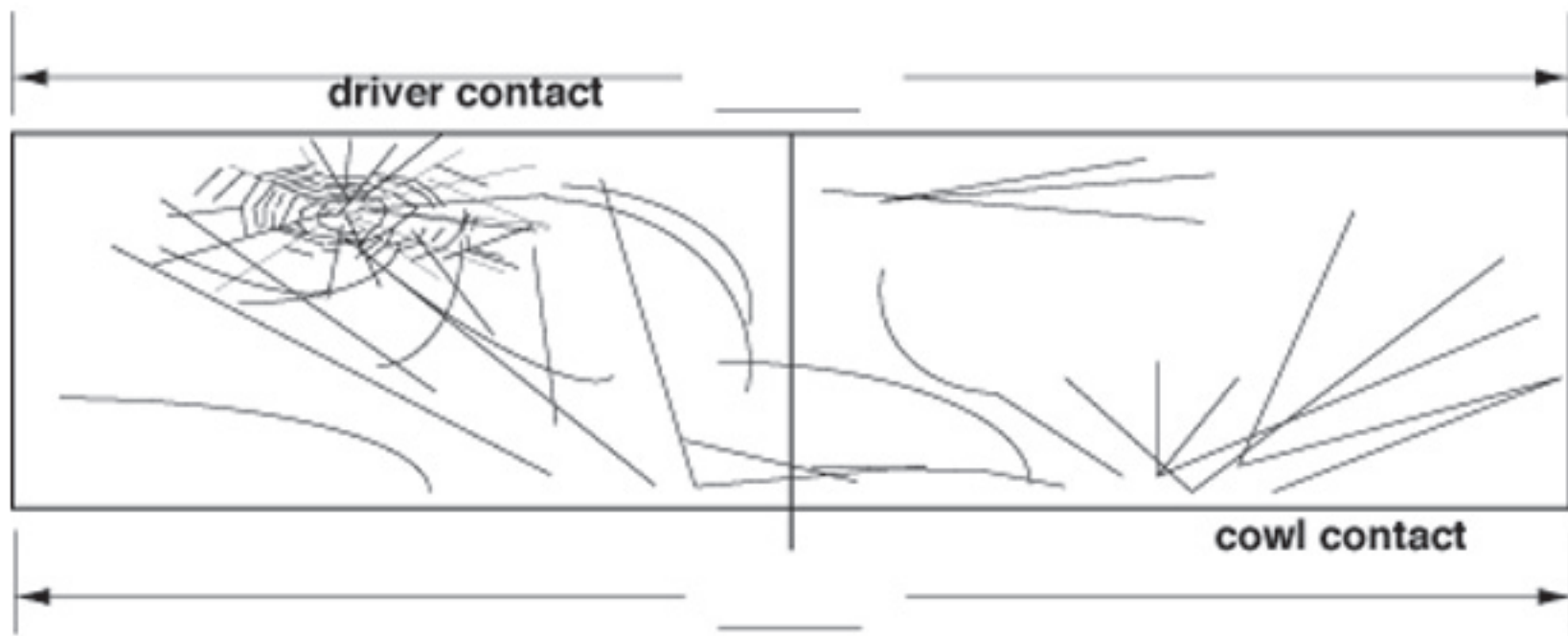
**NO RELEVANT INTRUSIONS**

**INTRUSION IT-1**

Location of Intrusion	Intruded Component	(All Measurements Are in Centimeters)			Dominant Crush Direction
		Comparison Value	– Intruded Value	= Intrusion	
13	Toe pan			4	To rear

**OCCUPANT CONTACT WORKSHEET**

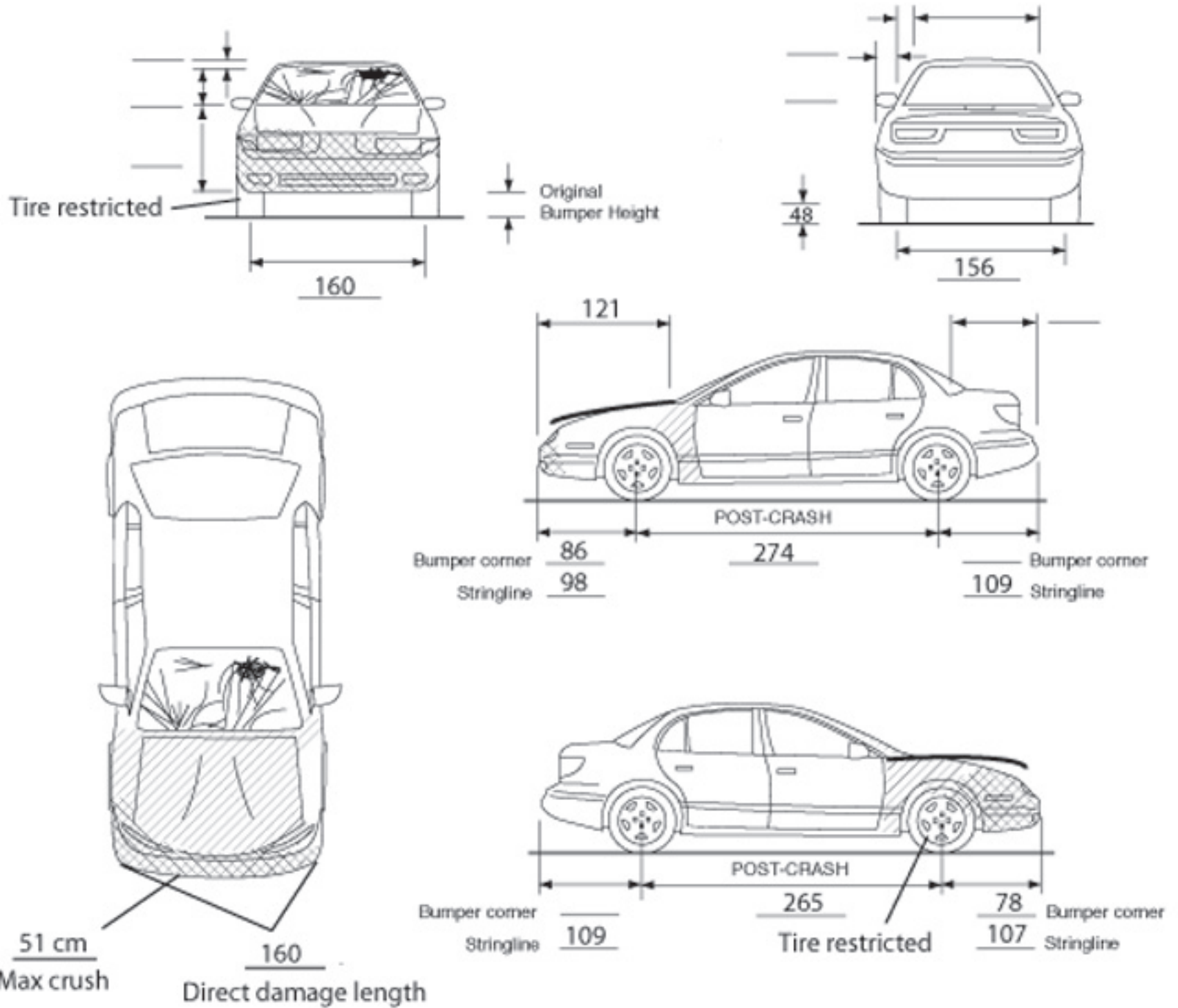
Contact	Interior Component Contacted	Occupant No. if Known	Body Region if Known	Supporting Physical Evidence	Confidence Level of Contact Point
A	Airbag	1	Unknown	Bloodstains, foreign material	2
B	Steering wheel	1	Unknown	Deformation	2
C	Windshield	1	Head	Spiderweb crack with hair deposit	1
D	Visor	1	Head	Scuffmark with hair deposit	1
E	Center stack	1	Unknown	Foreign deposit	3
F	Right knee bolster	1	Right knee	Deformation	2
G	Left knee bolster	1	Left knee	Deformation	2
H					
I					
J					

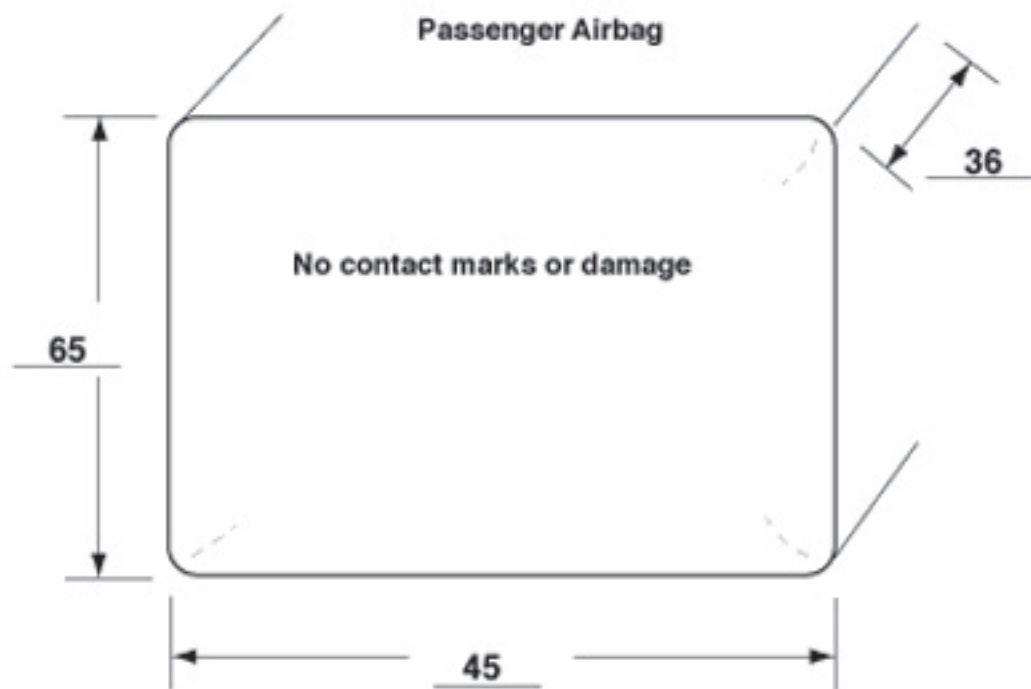


WINDSHIELD MARK ON CASE VEHICLE:

***UNKNOWN***

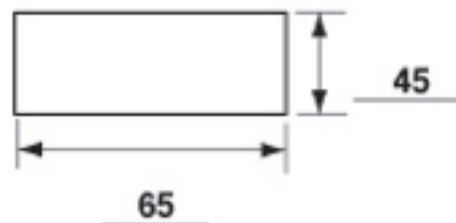
MEASUREMENTS IN CENTIMETERS





Passenger Airbag Door

Single Door



Vents:  Y N

if yes, how many: 2

Vents at 9 and 3 o'clock

Tethers: Y  N

if yes, how many: \_\_\_\_\_

















DUAL



7BK0

PROG

NR  
4

DISC-  
5

DISC+  
6

H

M

R

VOL

SOUND

CLOCK















































A close-up photograph of a light-colored leather car seat. A small, dark blue rectangular label is sewn into the stitching on the side of the seat. The label has the words "SIDE" and "AIRBAG" printed in white, stacked vertically. To the right of the seat, a brown fabric seatbelt strap is visible, with a light-colored plastic buckle. The scene is lit with bright, natural light, creating strong highlights and shadows on the leather surface.

SIDE  
AIRBAG

SIDE  
CURTAIN  
AIRBAG















ACCORD

V6



FORD





































