

## Case 426 : Narrative

Case Vehicle (A): 2003 Saab	Vehicle (B): 1998 Dodge
Type: 9-3 Linear, 4-door sedan	Type: Neon Sport, 2-door coupe
Driver: 36-year-old male	Driver: 20-year-old male
CDC: 12-FDEW-2	CDC: 99-0000-0

### SITUATION

[1](#) It was daylight and raining and the asphalt surface of the 3-lane north-south road was wet and slippery. [2](#) Case vehicle (A) was traveling north at an unknown speed in the northbound lane and [3](#) and vehicle (B) was traveling south at an unknown speed in the center turn lane. [4](#) [5](#) As the two vehicles approached a T-type intersection with a three-lane road to the east, the driver of vehicle (B) began a left turn to travel east on the intersecting road and entered the northbound lane in front of case vehicle (A). The driver of case vehicle (A) was unable to take any evasive action or brake and the front of case vehicle (A) struck the right front of vehicle (B). Both vehicles were towed due to damage.

The police accident report (PAR) indicates C-level injuries for the drivers of both case vehicle (A) and vehicle (B). The driver of case vehicle (A) was transported by ambulance to a hospital and he was treated and released. The driver of vehicle (B) did not seek treatment.

### GENERAL VEHICLE DAMAGE AND ESTIMATED CRASH SEVERITIES

[6](#) Damage to case vehicle (A) was moderate. [7](#) Direct damage began at the left-front bumper corner and extended across the entire frontal plane. The maximum crush was 47 cm and it occurred just to the right of the left-front bumper corner.

Vehicle (B) was not available for inspection.

Using the missing-vehicle algorithm of the WinSMASH crash-reconstruction program and a crush profile for [8](#) [9](#) [10](#) case vehicle (A), the following impact severities were estimated:

		Estimated Velocity Change - kph (mph)		
Vehicle	Variable	Total	Longitudinal	Latitudinal
Case vehicle (A)	delta V	35 (22)	-34 (-21)	6 (4)
Vehicle (B)	delta V	42 (26)	-41 (-26)	-7 (-5)

### DESCRIPTION OF DAMAGE TO CASE VEHICLE (A)

#### Exterior

In the front, [11](#) [12](#) the bumper support, the radiator, and the hood were crushed rearward into the engine

compartment and the front section of the hood was bent down. Body shop personnel had removed the upper radiator support, the grille, and both of the headlight assemblies prior to inspection. [13](#) Although the center of the hood was bowed up, the hood latch was still attached to the latching mechanism. [14 15](#) There was no damage to the hood hinges [16](#) and the rear edge of the hood was elevated but [17](#) it did not contact the windshield.

On the left side, [18](#) the forward section of the fender was deflected to the right. [19](#) The left-side doors were closed and operational, the left-side glazing was intact, and there was no change in the left-side wheelbase.

[20](#) There was no damage to the rear of the vehicle. [21](#) On the right side, the forward section of the fender was deflected to the left, [22](#) the right-side doors were closed and operational, and the right-side glazing was intact. There was no other right-side damage and there was no change in the right wheelbase.

## Interior

This vehicle was equipped with [23](#) steering-wheel and [24 25](#) dash-mounted frontal-impact airbags, with [32 33](#) front-row side-impact seatback-mounted airbags, and [26 27 28 29](#) with side-impact curtain airbags mounted in the [30 31](#) roof siderails. The frontal-impact and curtain airbags on both sides deployed during the frontal impact, but the seatback-mounted airbags did not deploy.

In the driver area, [34](#) there was no damage to the steering-wheel airbag or [35 36 37 38](#) to the airbag module cover. [39 40 41](#) There was no damage to the steering-wheel rim or spokes, and there was no displacement of the steering column. [42](#) The stitching and tethering of the side-impact curtain airbag was unraveled and deployment of the airbag curtain had wrinkled the roof headliner near the top of the A-pillar. [43](#) There was a scuffmark, possibly from airbag powder, on the sill of the driver-door window. [44 45 46 47 48 49](#) There was no other damage in the driver area.

[50](#) In the center-front area, the handgrip on the center console was loose [51](#) but there was no other damage. [52](#) In the right-front passenger area, the dash-mounted airbag and side-impact curtain were deployed. There was no damage to the dash-mounted airbag [53 54](#) or to the airbag-module cover, [55](#) but the surrounding instrument panel was buckled. [56](#) There was also no damage to the side-curtain airbag and [57 58](#) there was no other damage in the right-front passenger area.

[59 60 61 62 63](#) There was no damage in the rear seating area.

## OCCUPANT KINEMATICS AND INJURIES

[64 65 66](#) The 188-cm, 109-kg (6-ft 2-in, 240-lb) 36-year-old male driver was using the available three-point belt with pretensioner and belt load limiter, and the pretensioner, the steering-wheel airbag, and the driver-side curtain airbag deployed in the frontal impact. [67 68 69](#) Belt use by the driver is confirmed by the shoulder belt being jammed in the plastic D-ring with the belt in an extended mode, [70](#) by melted plastic on the belt webbing, [71 72](#) by belt loading marks on the continuous loop of the sliding-latch plate, and [73](#) by torn stitching of the belt load limiter.

During the frontal impact, the driver moved forward relative to the vehicle interior into the belt restraints, the steering-wheel airbag, and the knee bolster. He sustained a fracture to the right patella and a torn meniscus of the right knee, probably from knee contact with the knee bolster.

The following table and attached drawing [74](#) summarize the injuries for the driver of case vehicle (A).

Occupant: Driver	Age: 36 years	Gender: Male		
Restraints: 3-point belt with pretensioner and load limiter; steering-wheel airbag; side-impact airbag curtain	Stature: 188 cm (6 ft, 2 in)	Mass: 109 kg (240 lb)		
Injury Description	A.I.S.	Injury Source		
		Definite	Probable	Possible
—	—	—	—	—
Fracture, right patella	2	—	Knee bolster	—
Tear, meniscus of right knee	2	—	Knee bolster	—
Maximum A.I.S. Level	2	—	—	—
Injury Severity Score	4	—	—	—

CASE NO.: 426

CASE VEHICLE: 2003 Saab

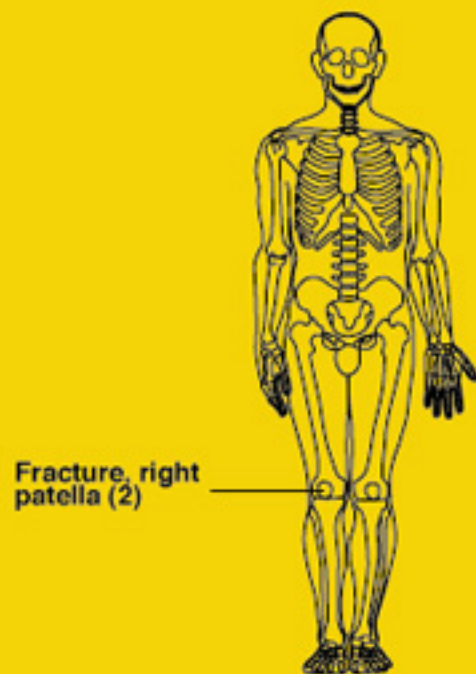
TYPE: 9-3 Linear, 4-door sedan

OCCUPANT: Driver: 36-year-old male

STATURE: 188 cm (6 ft, 2 in) MASS: 109 kg (240 lb)

RESTRAINTS: 3-point belt with pretensioner and load limiter;  
steering-wheel airbag; side-impact airbag curtain

SEVERITY: MAIS - 2 ISS - 4

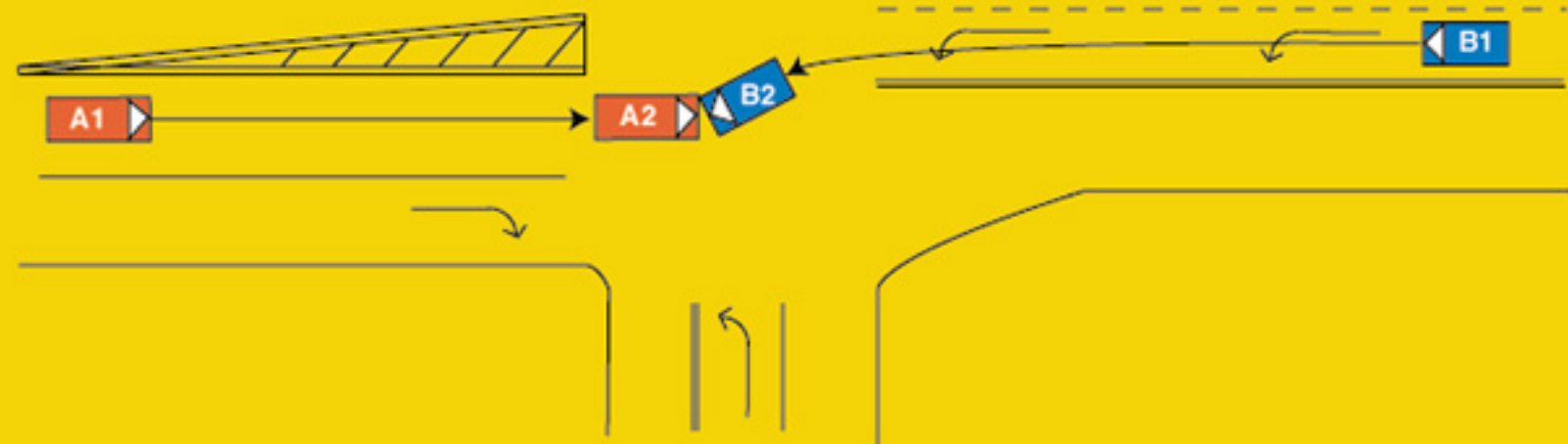


Case No.: **UM-4232**  
Case Veh. (A): **2003 Saab**  
Type: **9-3 Linear, 4-door sedan**  
Driver: **36-year-old male**  
Veh. (B): **1998 Dodge Neon, 2-door coupe**

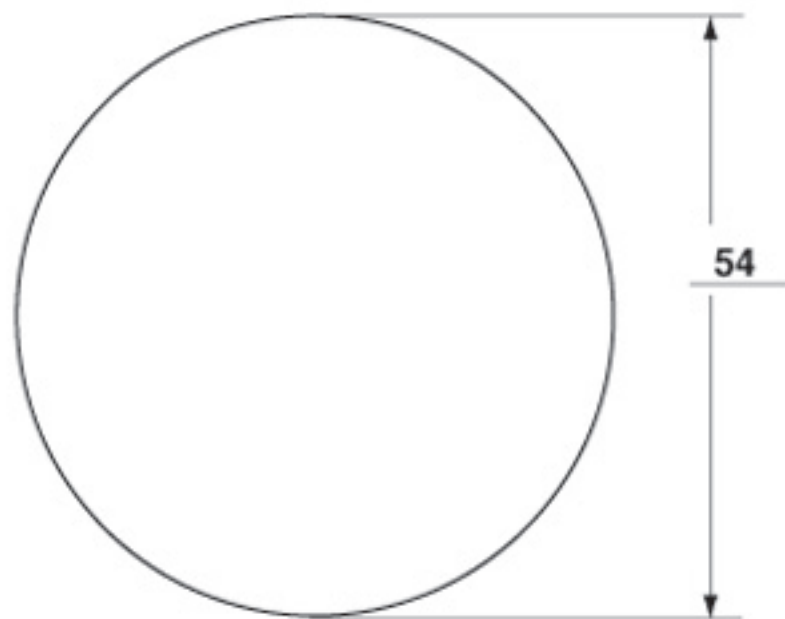
Light conditions: **Daylight**  
Weather: **Rain**  
Road Surface: **Wet**  
Road Construction: **Asphalt**

North →

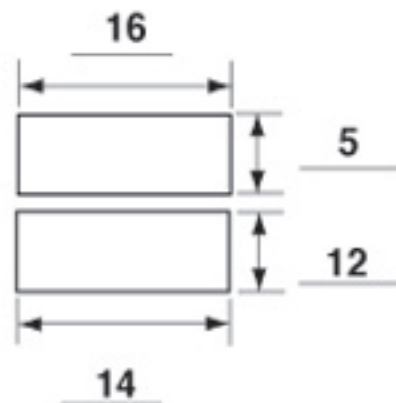
Speed Limit 45 mph (72 kph)



Driver Airbag

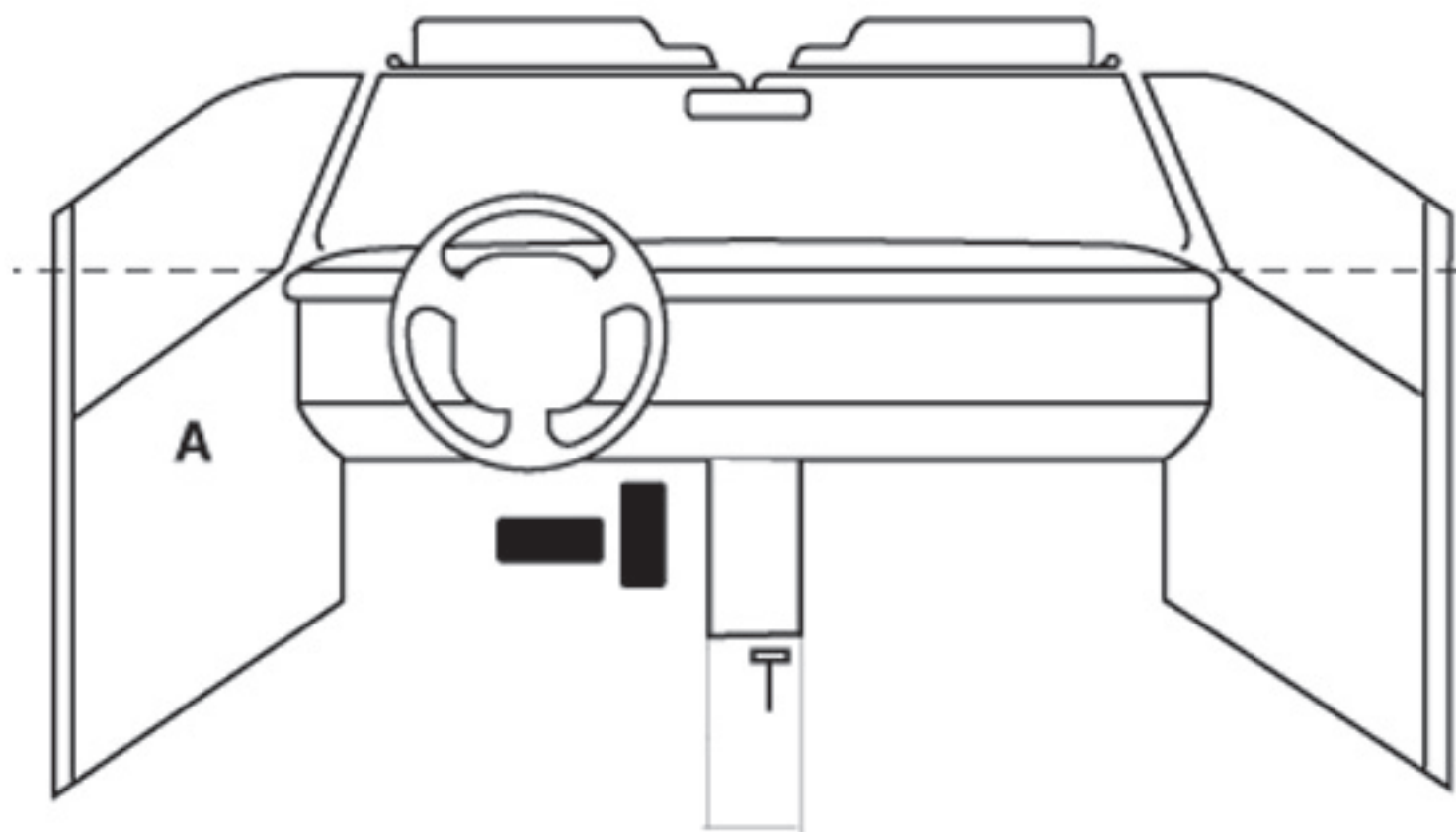


Driver Airbag Doors



Vents:  Y  N  
if yes, how many: 2

Tethers:  Y  N  
if yes, how many: 2



**A = door panel, scuffmark**

1 = Definitely 2 = Probably 3 = Possible

INTRUSION IT-1

Location of Intrusion	Intruded Component	(All Measurements Are in Centimeters)			Dominant Crush Direction
		Comparison Value	–	Intruded Value = Intrusion	
None			–	=	
			–	=	
			–	=	
			–	=	
			–	=	
			–	=	
			–	=	
			–	=	
			–	=	
			–	=	
			–	=	
			–	=	
			–	=	

OCCUPANT CONTACT WORKSHEET

Contact	Interior Component Contacted	Occupant No. if Known	Body Region if Known	Supporting Physical Evidence	Confidence Level of Contact Point
A	Door panel	DR	Unknown	scuffmark or airbag powder	3
B					
C					
D					
E					
F					
G					





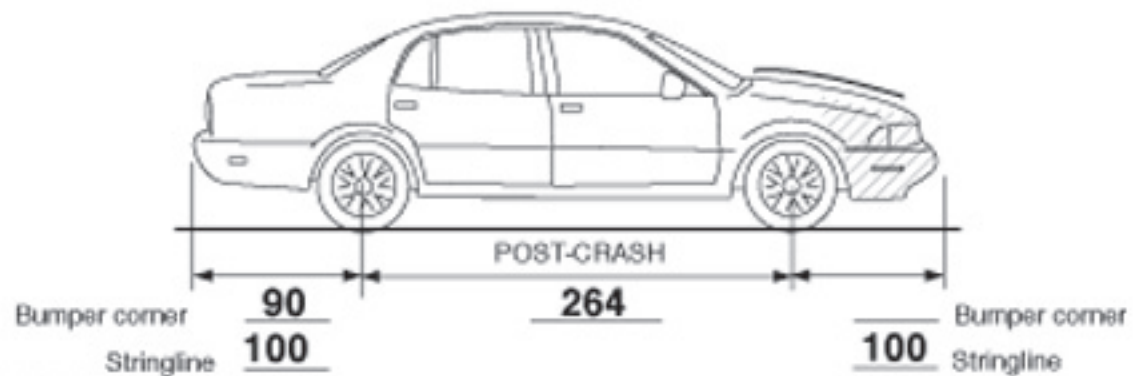
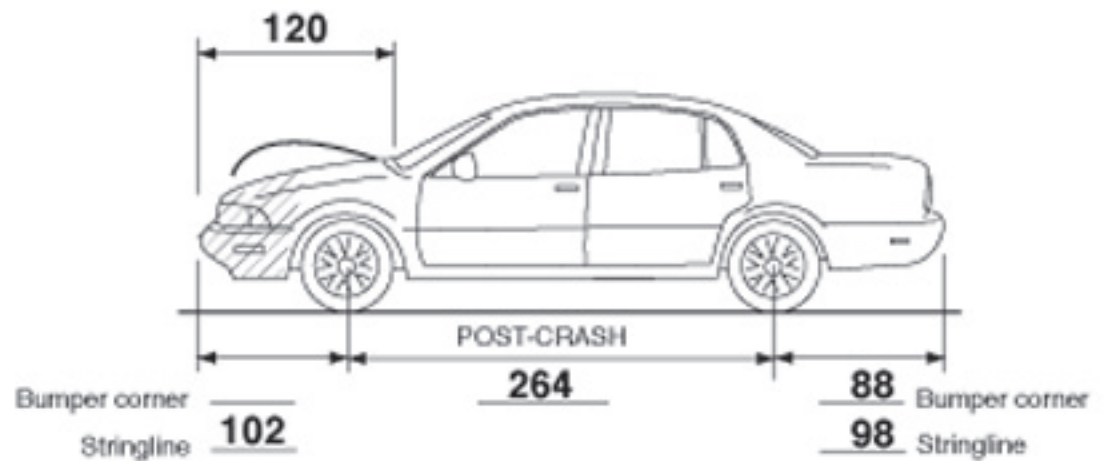
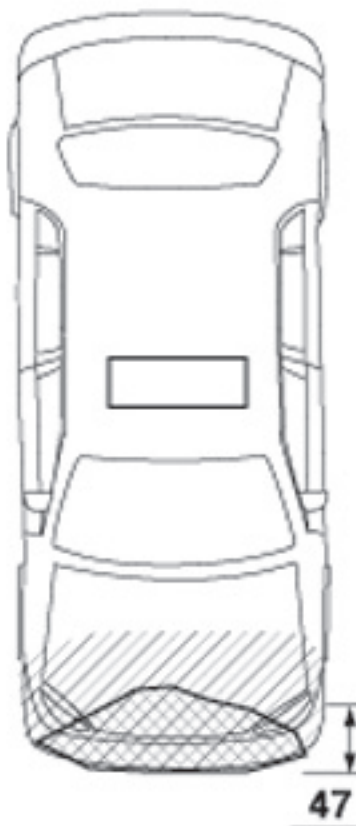
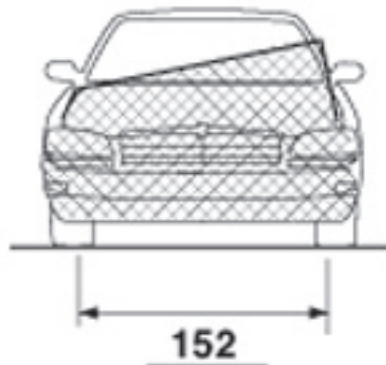
WINDSHIELD MARK ON CASE VEHICLE:



**SEKURIT**  
**SAINT.GOBAIN.**  
**SEKURISOL**

**43R-00342**  
DOT 618 M551A1  
.... 3

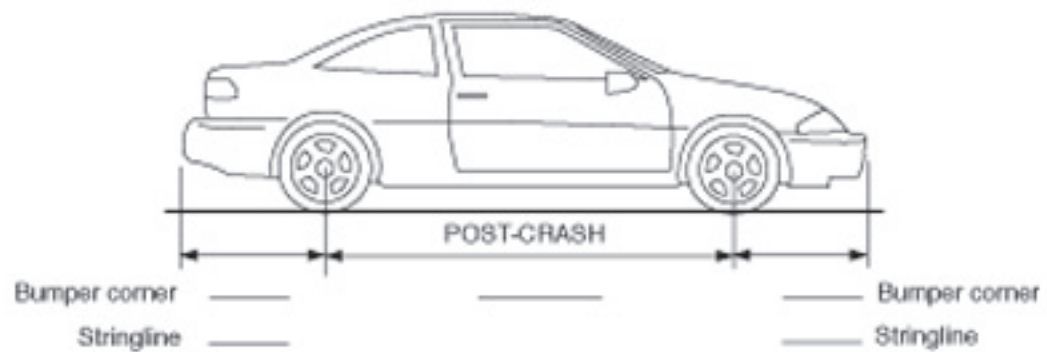
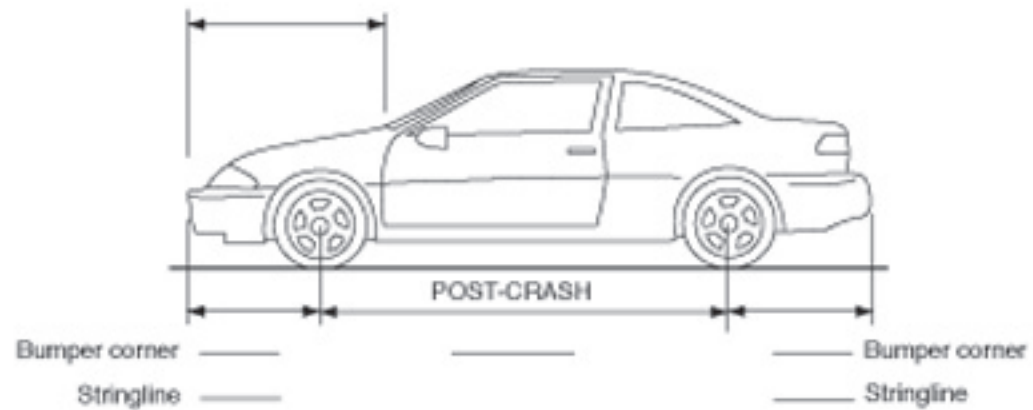
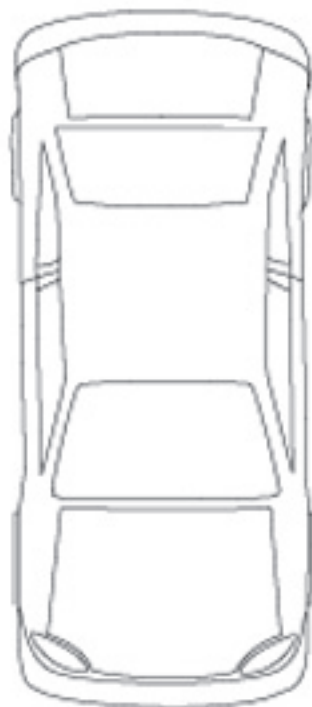
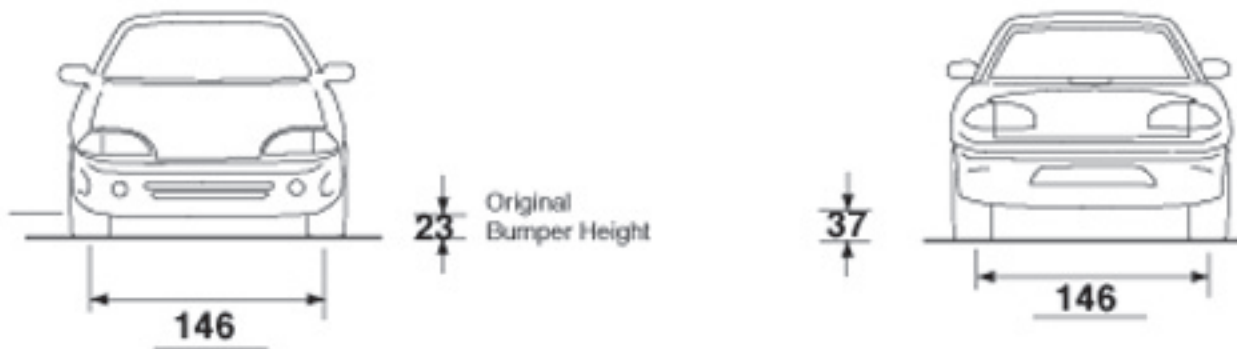
MEASUREMENTS IN CENTIMETERS



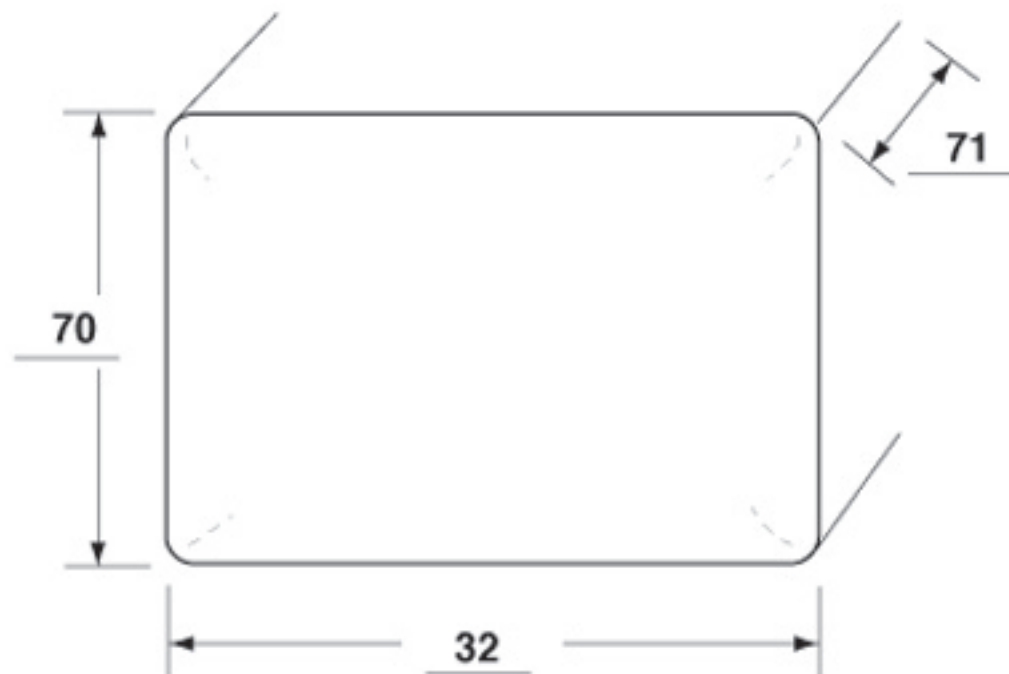
**Max. crush to front bumper at the C2 measurement**

MEASUREMENTS IN CENTIMETERS

**This vehicle was unavailbale for inspection**

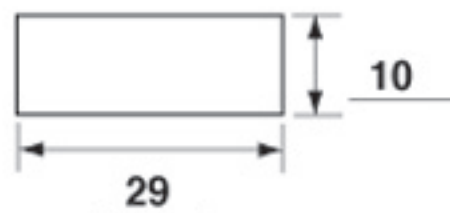


### Passenger Airbag



### Passenger Airbag Doors

#### Single Door



Vents:  Y  N

if yes, how many: 1

at 3 o'clock

Tethers: Y  N

if yes, how many: \_\_\_\_\_

# Vehicle Report

Click on Section Name to jump directly to that Section —

- [General Conditions](#)
- [Other Vehicle](#)
- [Case Vehicle General](#)
- [Case Vehicle Damage Description](#)
- [Crash Severity](#)
- [Case Vehicle Tires & Rims](#)
- [Case Vehicle Fuel, Tank, Fire](#)
- [Case Vehicle Exterior](#)
- [Case Vehicle Steering Column/Rim](#)
- [Case Vehicle Intrusion](#)
- [Case Vehicle Airbag\(s\)](#)
- [Case Vehicle Interior](#)
- [Case Vehicle Seats](#)

---

## General Conditions

[Back to Top](#)

Variable Number and Name	Code Value	Code Description	Other Options
V206 — Urban/Rural Area	2	Rural	<a href="#">more</a>
V207 — Limited Access Highway	0	No	<a href="#">more</a>
V208 — Road Total Lanes	3	3 lanes	<a href="#">more</a>
V209 — Intersecting Road Total Lanes	3	3 lanes	<a href="#">more</a>
V210 — Road Surface Type	1	Asphalt	<a href="#">more</a>
V211 — Road Defects	0	No	<a href="#">more</a>
V212 — Construction Zone	0	No	<a href="#">more</a>
V213 — Road Alignment Vertical Plane	1	Level	<a href="#">more</a>
V214 — Road Alignment Horizontal Plane	1	Straight	<a href="#">more</a>
V215 — Surface Covering	22	Water - wet	<a href="#">more</a>
V216 — Visibility Limitation	0	None	<a href="#">more</a>
V217 — Visibility Obstruction	0	None	<a href="#">more</a>
V218 — Speed Limit	4	71-79 km/h .. 45 mph	<a href="#">more</a>
V219 — Precipitation Type	1	Rain	<a href="#">more</a>
V220 — Precipitation Rate	9	Unknown	<a href="#">more</a>
V221 — Temperature	9	Unknown	<a href="#">more</a>

V222 — Crosswind	9	Unknown	<a href="#">more</a>
V223 — Light Conditions	1	Daylight	<a href="#">more</a>
V224 — Mechanical Malfunction Mention	0	No	<a href="#">more</a>
V225 — Case Vehicle and Object	0	No	<a href="#">more</a>
V226 — Case Vehicle Rollover	0	No	<a href="#">more</a>
V227 — Case Vehicle Ran Off Roadway	0	No	<a href="#">more</a>
V228 — Moving Case Vehicle/Contacted Moving Vehicle	1	Yes	<a href="#">more</a>
V229 — Case Vehicle/Contacted Stopped Vehicle	0	No	<a href="#">more</a>
V230 — Stopped Case Vehicle/Contactd Vehicle	0	No	<a href="#">more</a>
V231 — Total Vehicles Hit By Case Vehicle	1	1 vehicle	<a href="#">more</a>
V232 — Any Fire in Crash	0	No	<a href="#">more</a>
V233 — Max Police Severity-PAR	1	C - Possible Injury	<a href="#">more</a>
V234 — Driver Alcohol Involvement	0	Had not been drinking	<a href="#">more</a>
V235 — Driver Alcohol BAC	80	Not tested	<a href="#">more</a>
V236 — Driver Impairment Mention	0	No	<a href="#">more</a>
V237 — Driven/Towed From Scene	1	Driven From Scene	<a href="#">more</a>

## Other Vehicle

[Back to Top](#)

Variable Number and Name	Code Value	Code Description	Other Options
V301 — Other Vehicle VIN	1B3ES42Y7WD6	—	—
V302 — Other Vehicle Manufacturer/Body Code	13227	—	—
V303 — Other Vehicle Manufacturer	132	Dodge	<a href="#">more</a>
V304 — Other Vehicle Body Code	27	Compact 100-104.9 in. wb.	<a href="#">more</a>
V305 — Other Vehicle Make/Model	0746	Neon	<a href="#">more</a>
V306 — Other Vehicle Model Year	1998	—	—
V307 — Other Vehicle Mass	001152 kg	—	—
V308 — Other Vehicle Number	0	No separate report	<a href="#">more</a>
V309 — Other Vehicle Number of Occupants	01	—	—
V310 — Other Vehicle Traveling Speed	999	Unknown	<a href="#">more</a>

V311 — Highest Police Injury Severity	1	C - Possible Injury	<a href="#">more</a>
V312 — Other Vehicle Type	27	Compact 100-104.9 in. wb.	<a href="#">more</a>
V313 — Other Vehicle Wheelbase (cm)	264 cm	—	—
V314 — Average Track Width	146 cm	—	—
V315 — Overall Length	436 cm	—	—
V316 — Overall Width (OAW)	172 cm	—	—
V317 — Front Overhang (FOH)	086 cm	—	—
V318 — Rear Overhang (ROH)	086 cm	—	—
V319 — Undeformed End Width (UEW)	140 cm	—	—
V320 — Engine Displacement	2.0 l	—	—
V321 — Engine: Number of Cylinders	04	—	—
V322 — Direct Damage Length (DDL)	999	Unknown	<a href="#">more</a>
V323 — Front-End Overlap % (FEO)	99	Missing or Not applicable	<a href="#">more</a>
V324 — Vehicle Overlap % (VOL)	99	Missing or Not applicable	<a href="#">more</a>

## Case Vehicle General



[Click for case vehicle figure](#)

[Back to Top](#)

Variable Number and Name	Code Value	Code Description	Other Options
V401 — VIN	YS3FB49S7310	—	—
V402 — Manufacturer/Body Code	95128	—	—
V403 — Vehicle Manufacturer	951	Saab (Sweden)	<a href="#">more</a>
V404 — Vehicle Body Code	28	—	—
V405 — Make/Model Code	4802	—	—
V406 — Model Year	2003	—	—
V407 — Vehicle Mass	001375 kg	—	—
V408 — Odometer Reading	888888	—	—
V409 — Number of Occupants	01	—	—
V410 — Traveling Speed	999	Unknown	<a href="#">more</a>
V411 — Body Type	14	4-door sedan	<a href="#">more</a>
V412 — Stolen Vehicle	8	Not currently collected	<a href="#">more</a>
V413 — Body Structure	2	Unitized	<a href="#">more</a>
V414 — Transmission Type	1	Automatic	<a href="#">more</a>
	2		



V415 — Transmission Lever Location		Console	<a href="#">more</a>
V416 — Steering	1	Power	<a href="#">more</a>
V417 — Brakes	1	Power	<a href="#">more</a>
V418 — Brake Type	9	Unknown	<a href="#">more</a>
V419 — Brake Anti-lock Device	2	Four-wheel	<a href="#">more</a>
V420 — Air Conditioning in Vehicle	8	Not currently collected	<a href="#">more</a>
V421 — Drive Type	2	Front wheel	<a href="#">more</a>
V422 — Dual Rear Wheels	0	No	<a href="#">more</a>
V423 — Original Restraint System Type	3	Airbag	<a href="#">more</a>
V424 — Equipped With Roll Bar	0	No	<a href="#">more</a>
V425 — Roof Type	4	Sun roof closed	<a href="#">more</a>
V426 — Wheelbase	267 cm	—	—
V427 — Anti-lacerative Glass	0	None	<a href="#">more</a>
V428 — Average Track Width	152 cm	—	—
V429 — Overall Length	464 cm	—	—
V430 — Overall Width (OAW)	175 cm	—	—
V431 — Front Overhang	098 cm	—	—
V432 — Rear Overhang	099 cm	—	—
V433 — Undeformed End Width (UEW)	160 cm	—	—
V434 — Engine Displacement	2.0 l	—	—
V435 — Engine: Number of Cylinders	04	—	—
V436 — Direct Damage Length (DDL)	160 cm	—	—
V437 — Front End Overlap % (FEO)	99	Missing or Not applicable	<a href="#">more</a>
V438 — Vehicle Overlap % (VOL)	99	Missing or Not applicable	<a href="#">more</a>

## Case Vehicle

### Damage Description

[Back to Top](#)

Variable Number and Name	Code Value	Code Description	Other Options
V501 — Maximum Crush - Front	047 cm	—	—
V502 — Maximum Crush - Right Side	000 cm	No crush (or less than 1 cm.)	<a href="#">more</a>
V503 — Maximum Crush - Rear	000 cm	No crush (or less than 1 cm.)	<a href="#">more</a>
V504 — Maximum Crush - Left Side	000 cm	No crush (or less than 1 cm.)	<a href="#">more</a>

V505 — Maximum Crush - Roof	000 cm	No crush (or less than 1 cm.)	<a href="#">more</a>
V506 — Maximum Crush - Other	000 cm	No crush (or less than 1 cm.)	<a href="#">more</a>
V507 — Are Events In Chronological Order	1	Yes	<a href="#">more</a>
V508 — Event 1 Impact Location	1	On Roadway	<a href="#">more</a>
V509 — Event 1 Impact Configuration	11	FRONT of case veh - FRONT of contacted Vehicle	<a href="#">more</a>
V510 — Event 1 Object/Vehicle Contacted	27	Compact 100-104.9 in. wb.	<a href="#">more</a>
V511 — Event 2 Impact Location	8	No 2nd event	<a href="#">more</a>
V512 — Event 2 Impact Configuration	88	No 2nd event	<a href="#">more</a>
V513 — Event 2 Object/Vehicle Contacted	00	No object/vehicle contacted	<a href="#">more</a>
V514 — Event 3 Impact Location	8	No 3rd event	<a href="#">more</a>
V515 — Event 3 Impact Configuration	88	No 3rd event	<a href="#">more</a>
V516 — Event 3 Object/Vehicle Contacted	00	No object/vehicle contacted	<a href="#">more</a>
V517 — Event 4 Impact Location	8	No 4th event	<a href="#">more</a>
V518 — Event 4 Impact Configuration	88	No 4th event	<a href="#">more</a>
V519 — Event 4 Object/Vehicle Contacted	00	No object/vehicle contacted	<a href="#">more</a>
V520 — Event 5 Impact Location	8	No 5th event	<a href="#">more</a>
V521 — Event 5 Impact Configuration	88	No 5th event	<a href="#">more</a>
V522 — Event 5 Object/Vehicle Contacted	00	No object/vehicle contacted	<a href="#">more</a>
V523 — Event 6 Impact Location	8	No 6th event	<a href="#">more</a>
V524 — Event 6 Impact Configuration	88	No 6th event	<a href="#">more</a>
V525 — Event 6 Object/Vehicle Contacted	00	No object/vehicle contacted	<a href="#">more</a>
V526 — Event 7 Impact On Road	8	No 7th event	<a href="#">more</a>
V527 — Event 7 Impact Configuration	88	No 7th event	<a href="#">more</a>
V528 — Event 7 Object/Vehicle Contacted	00	No object/vehicle contacted	<a href="#">more</a>
V529 — Primary CDC Case Vehicle -event Number	1	Event 1	<a href="#">more</a>
V530 — Primary CDC Case Vehicle	999		

- impact speed		Unknown	<a href="#">more</a>
V531 — Primary CDC Case Vehicle - Estimated By	1	Investigator	<a href="#">more</a>
V532 — Primary CDC Case Vehicle -crush	047	—	—
V533 — Primary CDC Case Vehicle -clock #1	12	12 o'clock	<a href="#">more</a>
V534 — Primary CDC Case Vehicle letter 1 #1	06	F - Front	<a href="#">more</a>
V535 — Primary CDC Case Vehicle letter 2 #1	04	D - Distributed (Side or End)	<a href="#">more</a>
V536 — Primary CDC Case Vehicle letter 3 #1	05	E - Everything below belt line	<a href="#">more</a>
V537 — Primary CDC Case Vehicle letter 4 #1	23	W - Wide impact area	<a href="#">more</a>
V538 — Primary CDC Case Vehicle Extent #1	02	Extent 2	<a href="#">more</a>
V539 — Primary CDC Case Vehicle -CDC #1	12FDEW2	—	—
V541 — Primary CDC Case Vehicle letter 1 #2	00	Missing Data/Not applicable	<a href="#">more</a>
V542 — Primary CDC Case Vehicle letter 2 #2	00	Missing Data/Not applicable	<a href="#">more</a>
V543 — Primary CDC Case Vehicle letter 3 #2	00	Missing Data/Not applicable	<a href="#">more</a>
V544 — Primary CDC Case Vehicle letter 4 #2	00	Missing Data/Not applicable	<a href="#">more</a>
V545 — Primary CDC Case Vehicle Extent #2	00	Missing Data/Not applicable	<a href="#">more</a>
V546 — Primary CDC Case Vehicle -CDC #2	9800000	—	—
V547 — Primary CDC Contacted Vehicle - Impact Speed	999	Unknown	<a href="#">more</a>
V548 — Primary CDC Contacted Vehicle - Estimated By	1	Investigator	<a href="#">more</a>
V549 — Primary CDC Contacted Vehicle -crush	999	Unknown	<a href="#">more</a>
V550 — Primary CDC Contacted Vehicle -clock #1	99	Unknown or no damage	<a href="#">more</a>
V551 — Primary CDC Contacted Vehicle letter 1 #1	00	Missing Data/Not applicable	<a href="#">more</a>
V552 — Primary CDC Contacted Vehicle letter 2 #1	00	Missing Data/Not applicable	<a href="#">more</a>

V553 — Primary CDC Contacted Vehicle letter 3 #1	00	Missing Data/Not applicable	<a href="#">more</a>
V554 — Primary CDC Contacted Vehicle letter 4 #1	00	Missing Data/Not applicable	<a href="#">more</a>
V555 — Primary CDC Contacted Vehicle Extent #1	00	Missing Data/Not applicable	<a href="#">more</a>
V556 — Primary CDC Contacted Vehicle -CDC #1	9900000	—	—
V558 — Primary CDC Contacted Vehicle letter 1 #2	00	Missing Data/Not applicable	<a href="#">more</a>
V559 — Primary CDC Contacted Vehicle letter 2 #2	00	Missing Data/Not applicable	<a href="#">more</a>
V560 — Primary CDC Contacted Vehicle letter 3 #2	00	Missing Data/Not applicable	<a href="#">more</a>
V561 — Primary CDC Contacted Vehicle letter 4 #2	00	Missing Data/Not applicable	<a href="#">more</a>
V562 — Primary CDC Contacted Vehicle Extent #2	00	Missing Data/Not applicable	<a href="#">more</a>
V563 — Primary CDC Contacted Vehicle -CDC #2	9900000	—	—
V564 — Secondary CDC Case Vehicle - Event No	8	Not applicable	<a href="#">more</a>
V565 — Secondary CDC Case Vehicle - Impact Speed	998	Not Applicable	<a href="#">more</a>
V566 — Secondary CDC Case Vehicle - Estimated By	8	Not applicable (no vehicle/no impact)	<a href="#">more</a>
V567 — Secondary CDC Case Vehicle -crush	998	Not Applicable	<a href="#">more</a>
V568 — Secondary CDC Case Vehicle -clock #1	98	Not Applicable	<a href="#">more</a>
V569 — Secondary CDC Case Vehicle letter 1 #1	00	Missing Data/Not applicable	<a href="#">more</a>
V570 — Secondary CDC Case Vehicle letter 2 #1	00	Missing Data/Not applicable	<a href="#">more</a>
V571 — Secondary CDC Case Vehicle letter 3 #1	00	Missing Data/Not applicable	<a href="#">more</a>
V572 — Secondary CDC Case Vehicle letter 4 #1	00	Missing Data/Not applicable	<a href="#">more</a>
V573 — Secondary CDC Case Vehicle Extent #1	00	Missing Data/Not applicable	<a href="#">more</a>
V574 — Secondary CDC Case Vehicle -CDC #1	9800000	—	—
V576 — Secondary CDC Case	00	Missing Data/Not applicable	<a href="#">more</a>

Vehicle letter 1 #2			
V577 — Secondary CDC Case Vehicle letter 2 #2	00	Missing Data/Not applicable	<a href="#">more</a>
V578 — Secondary CDC Case Vehicle letter 3 #2	00	Missing Data/Not applicable	<a href="#">more</a>
V579 — Secondary CDC Case Vehicle letter 4 #2	00	Missing Data/Not applicable	<a href="#">more</a>
V580 — Secondary CDC Case Vehicle Extent #2	00	Missing Data/Not applicable	<a href="#">more</a>
V581 — Secondary CDC Case Vehicle -CDC #2	9800000	—	—
V582 — Secondary CDC Contacted Vehicle - Impact Speed	998	Not Applicable	<a href="#">more</a>
V583 — Secondary CDC Contacted Vehicle - Estimated By	8	Not applicable (no vehicle/no impact)	<a href="#">more</a>
V584 — Secondary CDC Contacted Vehicle -crush	998	Not Applicable	<a href="#">more</a>
V585 — Secondary CDC Contacted Vehicle -clock #1	98	Not Applicable	<a href="#">more</a>
V586 — Secondary CDC Contacted Vehicle letter 1 #1	00	Missing Data/Not applicable	<a href="#">more</a>
V587 — Secondary CDC Contacted Vehicle letter 2 #1	00	Missing Data/Not applicable	<a href="#">more</a>
V588 — Secondary CDC Contacted Vehicle letter 3 #1	00	Missing Data/Not applicable	<a href="#">more</a>
V589 — Secondary CDC Contacted Vehicle letter 4 #1	00	Missing Data/Not applicable	<a href="#">more</a>
V590 — Secondary CDC Contacted Vehicle Extent #1	00	Missing Data/Not applicable	<a href="#">more</a>
V591 — Secondary CDC Contacted Vehicle -CDC #1	9800000	—	—
V593 — Secondary CDC Contacted Vehicle letter 1 #2	00	Missing Data/Not applicable	<a href="#">more</a>
V594 — Secondary CDC Contacted Vehicle letter 2 #2	00	Missing Data/Not applicable	<a href="#">more</a>
V595 — Secondary CDC Contacted Vehicle letter 3 #2	00	Missing Data/Not applicable	<a href="#">more</a>
V596 — Secondary CDC Contacted Vehicle letter 4 #2	00	Missing Data/Not applicable	<a href="#">more</a>
V597 — Secondary CDC Contacted Vehicle Extent #2	00	Missing Data/Not applicable	<a href="#">more</a>
V598 — Secondary CDC Contacted Vehicle -CDC #2	9800000	—	—

## Crash Severity

[Back to Top](#)

Variable Number and Name	Code Value	Code Description	Other Options
V601 — Case Vehicle Primary Impact Number	1	—	—
V602 — Primary Impact Total Delta-V	035 kph	—	—
V603 — Primary Case Vehicle Reconstructed Longitudinal Delta-V	-034 kph	—	—
V604 — Primary Case Vehicle Reconstructed Lateral Delta-V	0006 kph	—	—
V605 — Primary Case Vehicle Reconstructed Crush Energy	0082 kJ	—	—
V606 — Primary Impact Case Vehicle - reconstruction	22	Reconstructed, moderate confidence level	<a href="#">more</a>
V607 — Primary Case Vehicle Reconstruction Mode	2	CDC & detailed damage	<a href="#">more</a>
V608 — Primary Contacted Vehicle Reconstructed	042 kph	—	—

Total Delta-V			
V609 — Primary Contacted Vehicle Reconstructed Longitudinal Delta-V	-041 kph	—	—
V610 — Primary Contacted Vehicle Reconstructed Lateral Delta- V	-007 kph	—	—
V611 — Primary Contacted Vehicle Reconstructed Crush Energy	0082 kJ	—	—
V612 — Case Vehicle Secondary Impact Number	8	—	—
V613 — Secondary Case Vehicle Reconstructed Total Delta-V	888	N/A	<a href="#">more</a>
V614 — Secondary Case Vehicle Reconstructed Longitudinal Delta-V	8888	—	—
V615 — Secondary Case Vehicle Reconstructed Lateral Delta- V	8888	—	—
V616 — Secondary Case Vehicle Reconstructed Crush Energy	8888	—	—

V617 — Secondary Case Vehicle Reconstruction Note	88	—	—
V618 — Secondary Case Vehicle Reconstruction Mode	8	Not applicable	<a href="#">more</a>
V619 — Secondary Contacted Vehicle Reconstructed Total Delta-V	888	N/A	<a href="#">more</a>
V620 — Secondary Contacted Vehicle Reconstructed Longitudinal Delta-V	8888	—	—
V621 — Secondary Contacted Vehicle Reconstructed Lateral Delta- V	8888	—	—
V622 — Secondary Contacted Vehicle Reconstructed Crush Energy	8888	—	—
V623 — Case Vehicle Primary Impact Number	1	—	—
V624 — Primary Case Vehicle Reconstructed Total EBS	037 kph	—	—
V625 — Primary Case	-036 kph		



Vehicle Reconstructed Longitudinal EBS		—	—
V626 — Primary Case Vehicle Reconstructed Lateral EBS	0006 kph	—	—
V627 — Primary Case Vehicle Reconstructed Crush Energy	0082 kJ	—	—
V628 — Primary Case Vehicle Reconstruction Note	22	Reconstructed, moderate confidence level	<a href="#">more</a>
V629 — Primary Case Vehicle Reconstruction Mode	2	CDC & detailed damage	<a href="#">more</a>
V630 — Primary Contacted Vehicle Reconstruction Total EBS	999	Unknown	<a href="#">more</a>
V631 — Primary Contacted Vehicle Reconstruction Longitudinal EBS	9999	—	—
V632 — Primary Contacted Vehicle Reconstruction Lateral EBS	9999	—	—
V633 — Primary Contacted Vehicle Reconstruction	9999	—	—

Crush Energy			
V634 — Case Vehicle Secondary Impact Number	8	Not applicable	<a href="#">more</a>
V635 — Secondary Case Vehicle Reconstruction Total EBS	888	N/A	<a href="#">more</a>
V636 — Secondary Case Vehicle Reconstruction Longitudinal EBS	8888	—	—
V637 — Secondary Case Vehicle Reconstruction Lateral EBS	8888	—	—
V638 — Secondary Case Vehicle Reconstruction Crush Energy	8888	—	—
V639 — Secondary Case Vehicle Reconstruction Note	88	—	—
V640 — Secondary Case Vehicle Reconstruction Mode	8	Not applicable	<a href="#">more</a>
V641 — Secondary Contacted Vehicle Reconstruction Total EBS	888	N/A	<a href="#">more</a>
V642 — Secondary Contacted Vehicle	8888	—	—

Reconstruction Longitudinal EBS			
V643 — Secondary Contacted Vehicle Reconstruction Lateral EBS	8888	—	—
V644 — Secondary Contacted Vehicle Reconstruction Crush Energy	8888	—	—
V645 — Case Vehicle Reconstructed Impact Number	1	—	—
V646 — Case Vehicle Impact 1 Plane	1	Bumper	<a href="#">more</a>
V647 — Case Vehicle Impact 1 Direct Damage Length [DDL]	160 cm	—	—
V648 — Case Vehicle Impact 1 Max Crush	047 cm	—	—
V649 — Case Vehicle Impact 1 Field-L	103 cm	—	—
V650 — Case Vehicle Impact 1 C1	015 cm	—	—
V651 — Case Vehicle Impact 1 C2	047 cm	—	—
V652 — Case Vehicle Impact 1 C3	042 cm	—	—
V653 — Case	036 cm		

Vehicle Impact 1 C4		—	—
V654 — Case Vehicle Impact 1 C5	026 cm	—	—
V655 — Case Vehicle Impact 1 C6	016 cm	—	—
V656 — Case Vehicle Impact 1 +/- D	0000 cm	—	—
V657 — Case Vehicle Reconstructed Impact Number	2	—	—
V658 — Case Vehicle Impact 2 Plane	8	Not applicable	<a href="#">more</a>
V659 — Case Vehicle Impact 2 Direct Damage Length [DDL]	998	Not applicable	<a href="#">more</a>
V660 — Case Vehicle Impact 2 Max Crush	998	Not applicable	<a href="#">more</a>
V661 — Case Vehicle Impact 2 Field-L	998	Not applicable	<a href="#">more</a>
V662 — Case Vehicle Impact 2 C1	998	Not applicable	<a href="#">more</a>
V663 — Case Vehicle Impact 2 C2	998	Not applicable	<a href="#">more</a>
V664 — Case Vehicle Impact 2 C3	998	Not applicable	<a href="#">more</a>
V665 — Case Vehicle Impact 2 C4	998	Not applicable	<a href="#">more</a>
V666 — Case	998		

Vehicle Impact 2 C5		Not applicable	<a href="#">more</a>
V667 — Case Vehicle Impact 2 C6	998	Not applicable	<a href="#">more</a>
V668 — Case Vehicle Impact 2 +/- D	9998	—	—
V669 — Other Vehicle Reconstructed Impact Number	9	Unknown	<a href="#">more</a>
V670 — Other Vehicle Impact 1 Plane	9	Unknown	<a href="#">more</a>
V671 — Other Vehicle Impact 1 Direct Damage Length [DDL]	999	Unknown	<a href="#">more</a>
V672 — Other Vehicle Impact 1 Max Crush	999	Unknown	<a href="#">more</a>
V673 — Other Vehicle Impact 1 Field-L	999	Unknown	<a href="#">more</a>
V674 — Other Vehicle Impact 1 C1	999	Unknown	<a href="#">more</a>
V675 — Other Vehicle Impact 1 C2	999	Unknown	<a href="#">more</a>
V676 — Other Vehicle Impact 1 C3	999	Unknown	<a href="#">more</a>
V677 — Other Vehicle Impact 1 C4	999	Unknown	<a href="#">more</a>
V678 — Other Vehicle Impact 1 C5	999	Unknown	<a href="#">more</a>
V679 — Other	999		

Vehicle Impact 1 C6		Unknown	<a href="#">more</a>
V680 — Other Vehicle Impact 1 +/- D	9999	—	—
V681 — Other Vehicle Reconstructed Impact Number	9	Unknown	<a href="#">more</a>
V682 — Other Vehicle Impact 2 Plane	9	Unknown	<a href="#">more</a>
V683 — Other Vehicle Impact 2 Direct Damage Length [DDL]	999	Unknown	<a href="#">more</a>
V684 — Other Vehicle Impact 2 Max Crush	999	Unknown	<a href="#">more</a>
V685 — Other Vehicle Impact 2 Field-L	999	Unknown	<a href="#">more</a>
V686 — Other Vehicle Impact 2 C1	999	Unknown	<a href="#">more</a>
V687 — Other Vehicle Impact 2 C2	999	Unknown	<a href="#">more</a>
V688 — Other Vehicle Impact 2 C3	999	Unknown	<a href="#">more</a>
V689 — Other Vehicle Impact 2 C4	999	Unknown	<a href="#">more</a>
V690 — Other Vehicle Impact 2 C5	999	Unknown	<a href="#">more</a>
V691 — Other Vehicle Impact 2 C6	999	Unknown	<a href="#">more</a>
V692 — Other	9999		

Vehicle Impact 2 +/- D		—	—
---------------------------	--	---	---

### Case Vehicle Tires & Rims

[Back to Top](#)

Variable Number and Name	Code Value	Code Description	Other Options
V701 — Left Front Wheel Damaged	0	No	<a href="#">more</a>
V702 — Right Front Wheel Damaged	0	No	<a href="#">more</a>
V703 — Right Rear Wheel Damaged	0	No	<a href="#">more</a>
V704 — Left Rear Wheel Damaged	0	No	<a href="#">more</a>
V705 — Left Front Tire Tread Type	4	All Weather	<a href="#">more</a>
V706 — Right Front Tire Tread Type	4	All Weather	<a href="#">more</a>
V707 — Right Rear Tire Tread Type	4	All Weather	<a href="#">more</a>
V708 — Left Rear Tire Tread Type	4	All Weather	<a href="#">more</a>
V709 — Left Front Carcass Construction	3	Radial	<a href="#">more</a>
V710 — Right Front Carcass Construction	3	Radial	<a href="#">more</a>
V711 — Right Rear Carcass Construction	3	Radial	<a href="#">more</a>
V712 — Left Rear Carcass Construction	3	Radial	<a href="#">more</a>
V717 — Left Front Tire Size	21555R16	—	—
V718 — Right Front Tire Size	21555R16	—	—
V719 — Right Rear Tire Size	21555R16	—	—
V720 — Left Rear Tire Size	21555R16	—	—

### Case Vehicle Fuel, Tank, Fire

[Back to Top](#)

Variable Number and Name	Code Value	Code Description	Other Options
V801 — Propulsive Fuel Type	1	Gasoline	<a href="#">more</a>
V802 — Main Tank Location	322	Within frame/centered laterally - within vertically	<a href="#">more</a>
V803 — Main Filler Cap Location	133	—	—

V804 — Main Tank Material	3	Plastic	<a href="#">more</a>
V805 — Aux Tank Type	8	Not applicable (not equipped)	<a href="#">more</a>
V806 — Aux Tank Location	888	Not applicable (not equipped)	<a href="#">more</a>
V807 — Aux Filler Cap Location	888	Not applicable (not equipped)	<a href="#">more</a>
V808 — Aux Tank Material	8	Not applicable	<a href="#">more</a>
V901 — Fuel Leakage From Crash	0	No	<a href="#">more</a>
V1001 — Fire In Or On Case Vehicle	0	No	<a href="#">more</a>



## Case Vehicle Exterior

[Back to Top](#)

Variable Number and Name	Code Value	Code Description	Other Options
V1101 — Hood Latch Released	0	No	<a href="#">more</a>
V1102 — Hood Latch Damaged	1	Yes	<a href="#">more</a>
V1103 — Hood Latch Jammed	1	Yes	<a href="#">more</a>
V1104 — Left Hood Hinge Damaged	0	No	<a href="#">more</a>
V1105 — Left Hood Hinge Separated	8	Not applicable	<a href="#">more</a>
V1106 — Right Hood Hinge Damaged	0	No	<a href="#">more</a>
V1107 — Right Hood Hinge Separated	8	Not applicable	<a href="#">more</a>
V1108 — Hood Remained On Vehicle	1	Yes	<a href="#">more</a>
V1109 — Rear Hood Edge Elevated	1	Yes	<a href="#">more</a>
V1110 — Edge Contacted Windshield	0	No	<a href="#">more</a>
V1111 — Edge Penetrated Windshield	8	Not applicable	<a href="#">more</a>
V1112 — Hood Latch Location	1	Front of Vehicle	<a href="#">more</a>
V1113 — Eng/Transmissn Mount Separation	0	No	<a href="#">more</a>
V1114 — Steerng Column Flex Coupling	9	Unknown if equipped	<a href="#">more</a>
V1115 — Steerng Column Coupling Damaged	9	Unknown	<a href="#">more</a>
V1116 — Steerng Column Coupling Separated	9	Unknown	<a href="#">more</a>
V1117 — Eng Comp Telescopng Unit	88	Not collected	<a href="#">more</a>
V1118 — Comp Orig/Telescopd Diff	888	Not collected	<a href="#">more</a>
V1119 — Left Side Body Mount Separation	8	Not applicable (unitized)	<a href="#">more</a>
V1120 — Upper Left A-pillar Separation	0	No	<a href="#">more</a>



V1121 — Lower Left A-pillar Separation	0	No	<a href="#">more</a>
V1122 — Upper Left B-pillar Separation	0	No	<a href="#">more</a>
V1123 — Lower Left B-pillar Separation	0	No	<a href="#">more</a>
V1124 — Upper Left C-pillar Separation	0	No	<a href="#">more</a>
V1125 — Lower Left C-pillar Separation	0	No	<a href="#">more</a>
V1126 — Upper Left D-pillar Separation	8	Not applicable (not equipped)	<a href="#">more</a>
V1127 — Lower Left D-pillar Separation	8	Not applicable (not equipped)	<a href="#">more</a>
V1128 — Left Front Door Opening Cause	0	Door did not open	<a href="#">more</a>
V1129 — Left Rear Door Opening Cause	0	Door did not open	<a href="#">more</a>
V1130 — Left Front Door Jammed Closed	0	No	<a href="#">more</a>
V1131 — Left Rear Door Jammed Closed	0	No	<a href="#">more</a>
V1132 — Rear Door Type	0	No door (includes pickups)	<a href="#">more</a>
V1133 — Rear Door Opening Cause	8	Not applicable (no rear door)	<a href="#">more</a>
V1134 — Rear Door Jammed Closed	8	Not applicable (no rear door)	<a href="#">more</a>
V1135 — Luggage Partition Damagd	0	No	<a href="#">more</a>
V1136 — Spare Tire Status	8	Not collected	<a href="#">more</a>
V1137 — Trailer Hitch Type	0	No hitch	<a href="#">more</a>
V1138 — Trailer Type	0	No trailer	<a href="#">more</a>
V1139 — Right Side Body Mount Separation	8	Not applicable (unitized)	<a href="#">more</a>
V1140 — Upper Right A-pillar Separation	0	No	<a href="#">more</a>
V1141 — Lower Right A-pillar Separation	0	No	<a href="#">more</a>
V1142 — Upper Right B-pillar Separation	0	No	<a href="#">more</a>
V1143 — Lower Right B-pillar Separation	0	No	<a href="#">more</a>
V1144 — Upper Right C-pillar Separation	0	No	<a href="#">more</a>
V1145 — Lower Right C-pillar	0	No	<a href="#">more</a>

Separation			
V1146 — Upper Right D-pillar Separation	8	Not applicable (not equipped)	<a href="#">more</a>
V1147 — Lower Right D-pillar Separation	8	Not applicable (not equipped)	<a href="#">more</a>
V1148 — Right Front Door Opening Cause	00	Door did not open	<a href="#">more</a>
V1149 — Right Rear Door Opening Cause	00	Door did not open	<a href="#">more</a>
V1150 — Right Front Door Jammed Closed	0	No	<a href="#">more</a>
V1151 — Right Rear Door Jammed Closed	0	No	<a href="#">more</a>
V1152 — Van Rear Door Type	8	Not applicable (not a van)	<a href="#">more</a>
V1153 — Windshield Cracked		No	<a href="#">more</a>
V1154 — Windshield Broken	8	Not applicable	<a href="#">more</a>
V1155 — Windshield Cracked or Broken by Occupant	8	Not applicable	<a href="#">more</a>
V1156 — Bond Separation Extent	0	None	<a href="#">more</a>
V1157 — Windshield Code		—	—
V1158 — Did Sun/T Roof Open	0	No	<a href="#">more</a>

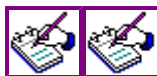
**Case Vehicle**  
**Steering**  
**Column/Rim**

[Back to Top](#)

Variable Number and Name	Code Value	Code Description	Other Options
V1201 — Steering Wheel Rim Damage	0	None	<a href="#">more</a>
V1202 — Number of Steering Wheel Spokes	3	3 spokes	<a href="#">more</a>
V1203 — Steering Wheel Spoke Damage	0	None	<a href="#">more</a>

V1204 — Column Tilt Feature	1	Yes, equipped (position unknown)	<a href="#">more</a>
V1205 — Column Swing-away Feature	0	Not equipped	<a href="#">more</a>
V1206 — Column Telescoping Feature	0	Not equipped	<a href="#">more</a>
V1207 — Wheel Energy Absorb Device	8	Not collected	<a href="#">more</a>
V1208 — Wheel Ea Orig/Damaged Diff	888	Not collected	<a href="#">more</a>
V1209 — Column Energy Absorb Device	88	Not collected	<a href="#">more</a>
V1210 — Column Ea Orig/Comprss Diff	888	Not collected	<a href="#">more</a>
V1211 — Shear Capsule Separation	888	Not collected	<a href="#">more</a>
V1212 — Column Vertical Rotation	0	No apparent rotation	<a href="#">more</a>
V1213 — Column Lateral Rotation	0	No apparent rotation	<a href="#">more</a>
V1214 — Steering Wheel Hub Damage	0	None	<a href="#">more</a>

## Case Vehicle Intrusion



Click for intrusion figures

[Back to Top](#)

Variable Number and Name	Code Value	Code Description	Other Options
V1301 — Occupant Compartment Intrusion	0	No	<a href="#">more</a>
V1302 — Was Intrusion Catastrophic	8	Not applicable	<a href="#">more</a>
V1303 — Intrusion Number 01	00	No Intrusion, None	<a href="#">more</a>
V1304 — Intrusion 01 Occupant Space Number	00	No Intrusion, None	<a href="#">more</a>
V1305 — Intrusion 01 Intruding Object	00	No Intrusion, None	<a href="#">more</a>
V1306 — Intrusion 01 Assoc Event Number	0	No Intrusion, None	<a href="#">more</a>
V1307 — Intrusion 01 Max Intrusion X-axis	00 cm	0 cm or No Intrusion	<a href="#">more</a>
V1308 — Intrusion 01 Max Intrusion Y-axis	00 cm	0 cm or No Intrusion	<a href="#">more</a>
V1309 — Intrusion 01 Max Intrusion Z-axis	00 cm	0 cm or No Intrusion	<a href="#">more</a>
V1310 — Intrusion 01 Occupant	00	No contact or no intrusion	<a href="#">more</a>

Number			
V1311 — Intrusion 01 Injury Number	00	No injury or no intrusion	<a href="#">more</a>
V1312 — Intrusion 01 Occupant Number	00	No contact or no intrusion	<a href="#">more</a>
V1313 — Intrusion 01 Injury Number	99	Contact, injury unknown or data not collected	<a href="#">more</a>
V1314 — Intrusion Number 02	00	No Intrusion, None	<a href="#">more</a>
V1315 — Intrusion 02 Occupant Space Number	00	No Intrusion, None	<a href="#">more</a>
V1316 — Intrusion 02 Intruding Object	00	No Intrusion, None	<a href="#">more</a>
V1317 — Intrusion 02 Assoc Event Number	0	No Intrusion, None	<a href="#">more</a>
V1318 — Intrusion 02 Max Intrusion X-axis	00 cm	0 cm or No Intrusion	<a href="#">more</a>
V1319 — Intrusion 02 Max Intrusion Y-axis	00 cm	0 cm or No Intrusion	<a href="#">more</a>
V1320 — Intrusion 02 Max Intrusion Z-axis	00 cm	0 cm or No Intrusion	<a href="#">more</a>
V1321 — Intrusion 02 Occupant Number	00	No contact or no intrusion	<a href="#">more</a>
V1322 — Intrusion 02 Injury Number	00	No injury or no intrusion	<a href="#">more</a>
V1323 — Intrusion 02 Occupant Number	00	No contact or no intrusion	<a href="#">more</a>
V1324 — Intrusion 02 Injury Number	99	Contact, injury unknown or data not collected	<a href="#">more</a>
V1325 — Intrusion Number 03	00	No Intrusion, None	<a href="#">more</a>
V1326 — Intrusion 03 Occupant Space Number	00	No Intrusion, None	<a href="#">more</a>
V1327 — Intrusion 03 Intruding Object	00	No Intrusion, None	<a href="#">more</a>
V1328 — Intrusion 03 Assoc Event Number	0	No Intrusion, None	<a href="#">more</a>
V1329 — Intrusion 03 Max Intrusion X-axis	00 cm	0 cm or No Intrusion	<a href="#">more</a>
V1330 — Intrusion 03 Max Intrusion Y-axis	00 cm	0 cm or No Intrusion	<a href="#">more</a>
V1331 — Intrusion 03 Max Intrusion Z-axis	00 cm	0 cm or No Intrusion	<a href="#">more</a>
V1332 — Intrusion 03 Occupant Number	00	No contact or no intrusion	<a href="#">more</a>
V1333 — Intrusion 03 Injury Number	00	No injury or no intrusion	<a href="#">more</a>

V1334 — Intrusion 03 Occupant Number	00	No contact or no intrusion	<a href="#">more</a>
V1335 — Intrusion 03 Injury Number	99	Contact, injury unknown or data not collected	<a href="#">more</a>
V1336 — Intrusion Number 04	00	No Intrusion, None	<a href="#">more</a>
V1337 — Intrusion 04 Occupant Space Number	00	No Intrusion, None	<a href="#">more</a>
V1338 — Intrusion 04 Intruding Object	00	No Intrusion, None	<a href="#">more</a>
V1339 — Intrusion 04 Assoc Event Number	0	No Intrusion, None	<a href="#">more</a>
V1340 — Intrusion 04 Max Intrusion X-axis	00 cm	0 cm or No Intrusion	<a href="#">more</a>
V1341 — Intrusion 04 Max Intrusion Y-axis	00 cm	0 cm or No Intrusion	<a href="#">more</a>
V1342 — Intrusion 04 Max Intrusion Z-axis	00 cm	0 cm or No Intrusion	<a href="#">more</a>
V1343 — Intrusion 04 Occupant Number	00	No contact or no intrusion	<a href="#">more</a>
V1344 — Intrusion 04 Injury Number	00	No injury or no intrusion	<a href="#">more</a>
V1345 — Intrusion 04 Occupant Number	00	No contact or no intrusion	<a href="#">more</a>
V1346 — Intrusion 04 Injury Number	99	Contact, injury unknown or data not collected	<a href="#">more</a>
V1347 — Intrusion Number 05	00	No Intrusion, None	<a href="#">more</a>
V1348 — Intrusion 05 Occupant Space Number	00	No Intrusion, None	<a href="#">more</a>
V1349 — Intrusion 05 Intruding Object	00	No Intrusion, None	<a href="#">more</a>
V1350 — Intrusion 05 Assoc Event Number	0	No Intrusion, None	<a href="#">more</a>
V1351 — Intrusion 05 Max Intrusion X-axis	00 cm	0 cm or No Intrusion	<a href="#">more</a>
V1352 — Intrusion 05 Max Intrusion Y-axis	00 cm	0 cm or No Intrusion	<a href="#">more</a>
V1353 — Intrusion 05 Max Intrusion Z-axis	00 cm	0 cm or No Intrusion	<a href="#">more</a>
V1354 — Intrusion 05 Occupant Number	00	No contact or no intrusion	<a href="#">more</a>
V1355 — Intrusion 05 Injury Number	00	No injury or no intrusion	<a href="#">more</a>
V1356 — Intrusion 05 Occupant Number	00	No contact or no intrusion	<a href="#">more</a>
	99	Contact, injury unknown or data	

V1357 — Intrusion 05 Injury Number		not collected	<a href="#">more</a>
V1358 — Intrusion Number 06	00	No Intrusion, None	<a href="#">more</a>
V1359 — Intrusion 06 Occupant Space Number	00	No Intrusion, None	<a href="#">more</a>
V1360 — Intrusion 06 Intruding Object	00	No Intrusion, None	<a href="#">more</a>
V1361 — Intrusion 06 Assoc Event Number	0	No Intrusion, None	<a href="#">more</a>
V1362 — Intrusion 06 Max Intrusion X-axis	00 cm	0 cm or No Intrusion	<a href="#">more</a>
V1363 — Intrusion 06 Max Intrusion Y-axis	00 cm	0 cm or No Intrusion	<a href="#">more</a>
V1364 — Intrusion 06 Max Intrusion Z-axis	00 cm	0 cm or No Intrusion	<a href="#">more</a>
V1365 — Intrusion 06 Occupant Number	00	No contact or no intrusion	<a href="#">more</a>
V1366 — Intrusion 06 Injury Number	00	No injury or no intrusion	<a href="#">more</a>
V1367 — Intrusion 06 Occupant Number	00	No contact or no intrusion	<a href="#">more</a>
V1368 — Intrusion 06 Injury Number	99	Contact, injury unknown or data not collected	<a href="#">more</a>
V1369 — Intrusion Number 07	00	No Intrusion, None	<a href="#">more</a>
V1370 — Intrusion 07 Occupant Space Number	00	No Intrusion, None	<a href="#">more</a>
V1371 — Intrusion 07 Intruding Object	00	No Intrusion, None	<a href="#">more</a>
V1372 — Intrusion 07 Assoc Event Number	0	No Intrusion, None	<a href="#">more</a>
V1373 — Intrusion 07 Max Intrusion X-axis	00 cm	0 cm or No Intrusion	<a href="#">more</a>
V1374 — Intrusion 07 Max Intrusion Y-axis	00 cm	0 cm or No Intrusion	<a href="#">more</a>
V1375 — Intrusion 07 Max Intrusion Z-axis	00 cm	0 cm or No Intrusion	<a href="#">more</a>
V1376 — Intrusion 07 Occupant Number	00	No contact or no intrusion	<a href="#">more</a>
V1377 — Intrusion 07 Injury Number	00	No injury or no intrusion	<a href="#">more</a>
V1378 — Intrusion 07 Occupant Number	00	No contact or no intrusion	<a href="#">more</a>
V1379 — Intrusion 07 Injury Number	99	Contact, injury unknown or data not collected	<a href="#">more</a>
V1380 — Intrusion Number 08	00	No Intrusion, None	<a href="#">more</a>

V1381 — Intrusion 08 Occupant Space Number	00	No Intrusion, None	<a href="#">more</a>
V1382 — Intrusion 08 Intruding Object	00	No Intrusion, None	<a href="#">more</a>
V1383 — Intrusion 08 Assoc Event Number	0	No Intrusion, None	<a href="#">more</a>
V1384 — Intrusion 08 Max Intrusion X-axis	00 cm	0 cm or No Intrusion	<a href="#">more</a>
V1385 — Intrusion 08 Max Intrusion Y-axis	00 cm	0 cm or No Intrusion	<a href="#">more</a>
V1386 — Intrusion 08 Max Intrusion Z-axis	00 cm	0 cm or No Intrusion	<a href="#">more</a>
V1387 — Intrusion 08 Occupant Number	00	No contact or no intrusion	<a href="#">more</a>
V1388 — Intrusion 08 Injury Number	00	No injury or no intrusion	<a href="#">more</a>
V1389 — Intrusion 08 Occupant Number	00	No contact or no intrusion	<a href="#">more</a>
V1390 — Intrusion 08 Injury Number	99	Contact, injury unknown or data not collected	<a href="#">more</a>
V1391 — Intrusion Number 09	00	No Intrusion, None	<a href="#">more</a>
V1392 — Intrusion 09 Occupant Space Number	00	No Intrusion, None	<a href="#">more</a>
V1393 — Intrusion 09 Intruding Object	00	No Intrusion, None	<a href="#">more</a>
V1394 — Intrusion 09 Assoc Event Number	0	No Intrusion, None	<a href="#">more</a>
V1395 — Intrusion 09 Max Intrusion X-axis	00 cm	0 cm or No Intrusion	<a href="#">more</a>
V1396 — Intrusion 09 Max Intrusion Y-axis	00 cm	0 cm or No Intrusion	<a href="#">more</a>
V1397 — Intrusion 09 Max Intrusion Z-axis	00 cm	0 cm or No Intrusion	<a href="#">more</a>
V1398 — Intrusion 09 Occupant Number	00	No contact or no intrusion	<a href="#">more</a>
V1399 — Intrusion 09 Injury Number	00	No injury or no intrusion	<a href="#">more</a>
V1400 — Intrusion 09 Occupant Number	00	No contact or no intrusion	<a href="#">more</a>
V1401 — Intrusion 09 Injury Number	99	Contact, injury unknown or data not collected	<a href="#">more</a>
V1402 — Intrusion Number 10	00	No Intrusion, None	<a href="#">more</a>
V1403 — Intrusion 10 Occupant Space Number	00	No Intrusion, None	<a href="#">more</a>
V1404 — Intrusion 10 Intruding	00		

Object		No Intrusion, None	<a href="#">more</a>
V1405 — Intrusion 10 Assoc Event Number	0	No Intrusion, None	<a href="#">more</a>
V1406 — Intrusion 10 Max Intrusion X-axis	00 cm	0 cm or No Intrusion	<a href="#">more</a>
V1407 — Intrusion 10 Max Intrusion Y-axis	00 cm	0 cm or No Intrusion	<a href="#">more</a>
V1408 — Intrusion 10 Max Intrusion Z-axis	00 cm	0 cm or No Intrusion	<a href="#">more</a>
V1409 — Intrusion 10 Occupant Number	00	No contact or no intrusion	<a href="#">more</a>
V1410 — Intrusion 10 Injury Number	00	No injury or no intrusion	<a href="#">more</a>
V1411 — Intrusion 10 Occupant Number	00	No contact or no intrusion	<a href="#">more</a>
V1412 — Intrusion 10 Injury Number	99	Contact, injury unknown or data not collected	<a href="#">more</a>
V1413 — Door Intrusion Number 01	88	Not Applicable	<a href="#">more</a>
V1414 — Door Intrusion Number 01 Cause	8	Not applicable	<a href="#">more</a>
V1415 — Door Intrusion Number 02	88	Not Applicable	<a href="#">more</a>
V1416 — Door Intrusion Number 02 Cause	8	Not applicable	<a href="#">more</a>
V1417 — Door Intrusion Number 03	88	Not Applicable	<a href="#">more</a>
V1418 — Door Intrusion Number 03 Cause	8	Not applicable	<a href="#">more</a>
V1419 — Door Intrusion 01 Component	88	Not Applicable	<a href="#">more</a>
V1420 — Door Intrusion 01 Component Damaged 1	8	Not Applicable	<a href="#">more</a>
V1421 — Door Intrusion 01 Component Damaged 2	8	Not Applicable	<a href="#">more</a>
V1422 — Door Intrusion 02 Component	88	Not Applicable	<a href="#">more</a>
V1423 — Door Intrusion 02 Component Damaged 1	8	Not Applicable	<a href="#">more</a>
V1424 — Door Intrusion 02 Component Damaged 2	8	Not Applicable	<a href="#">more</a>
V1425 — Door Intrusion 03 Component	88	Not Applicable	<a href="#">more</a>
V1426 — Door Intrusion 03 Component Damaged 1	8	Not Applicable	<a href="#">more</a>
V1427 — Door Intrusion 03 Component Damaged 2	8	Not Applicable	<a href="#">more</a>



V1428 — Door Intrusion 04 Component	88	Not Applicable	<a href="#">more</a>
V1429 — Door Intrusion 04 Component Damaged 1	8	Not Applicable	<a href="#">more</a>
V1430 — Door Intrusion 04 Component Damaged 2	8	Not Applicable	<a href="#">more</a>

**Case Vehicle  
Airbag(s)**



[Click for Driver airbag figure](#)



[Click for Passenger airbag figure](#)

[Back to Top](#)

Variable Number and Name	Code Value	Code Description	Other Options
V1501 — Driver Airbag Equipped	1	Yes	<a href="#">more</a>
V1502 — Driver Airbag Deployed	1	Yes	<a href="#">more</a>
V1503 — Driver Airbag Condition	0	No Damage	<a href="#">more</a>
V1504 — Passenger Airbag Equip	1	Yes	<a href="#">more</a>
V1505 — Passenger Airbag Deployed	1	Yes	<a href="#">more</a>
V1506 — Passenger Airbag Condition	0	No Damage	<a href="#">more</a>
V1507 — Steering Wheel Airbag Tether	1	Yes	<a href="#">more</a>
V1508 — Driver Airbag Marked By Contact	0	No	<a href="#">more</a>
V1509 — Passenger Airbag Tether	0	No	<a href="#">more</a>
V1510 — Passenger Airbag Marked By Contact	0	No	<a href="#">more</a>

**Case Vehicle  
Interior**

[Back to Top](#)

Variable Number and Name	Code Value	Code Description	Other Options
V1601 — Left Front Door Damaged	3	No, occupant contact	<a href="#">more</a>
V1602 — Right Front Door Damaged	0	No	<a href="#">more</a>
V1603 — Left Front Hardware Damaged	0	No	<a href="#">more</a>
V1604 — Right Front Hardware Damaged	0	No	<a href="#">more</a>
V1605 — Left Front Armrest Damaged	0	No	<a href="#">more</a>

V1606 — Right Front Armrest Damaged	0	No	<a href="#">more</a>
V1607 — Left Front Glass Damaged	0	No	<a href="#">more</a>
V1608 — Right Front Glass Damaged	0	No	<a href="#">more</a>
V1609 — Left Rear Door Area Damaged	0	No	<a href="#">more</a>
V1610 — Right Rear Door Area Damaged	0	No	<a href="#">more</a>
V1611 — Left Rear Hardware Damaged	0	No	<a href="#">more</a>
V1612 — Right Rear Hardware Damaged	0	No	<a href="#">more</a>
V1613 — Left Rear Armrest Damaged	0	No	<a href="#">more</a>
V1614 — Right Rear Armrest Damaged	0	No	<a href="#">more</a>
V1615 — Left Rear Glass Damaged	0	No	<a href="#">more</a>
V1616 — Right Rear Glass Damaged	0	No	<a href="#">more</a>
V1617 — Left Roof Side Rail Damaged	0	No	<a href="#">more</a>
V1618 — Right Roof Side Rail Damaged	0	No	<a href="#">more</a>
V1619 — Left B-pillar Damaged	0	No	<a href="#">more</a>
V1620 — Right B-pillar Damaged	0	No	<a href="#">more</a>
V1621 — Left C-pillar Damaged	0	No	<a href="#">more</a>
V1622 — Right C-pillar Damaged	0	No	<a href="#">more</a>
V1623 — Left D-pillar Damaged	8	Not applicable	<a href="#">more</a>
V1624 — Right D-pillar Damaged	8	Not applicable	<a href="#">more</a>
V1625 — Left Headlining Damaged	1	Yes	<a href="#">more</a>
V1626 — Right Headlining Damaged	0	No	<a href="#">more</a>
V1627 — Left Roof Structure Damaged	0	No	<a href="#">more</a>
V1628 — Right Roof Structure Damaged	0	No	<a href="#">more</a>
V1629 — Left T/Sun Roof Damaged	0	No	<a href="#">more</a>
V1630 — Right T/Sun Roof Damaged	0	No	<a href="#">more</a>
V1631 — Other Left Side Item Damaged	8	Not applicable	<a href="#">more</a>
V1632 — Other Right Side Item Damaged	8	Not applicable	<a href="#">more</a>
V1633 — Foot Controls Damaged	0	No	<a href="#">more</a>

V1634 — Ignition Key Damaged	0	No	<a href="#">more</a>
V1635 — Rear View Mirror Damaged	0	No	<a href="#">more</a>
V1636 — Sunvisor/Fitting Damaged	0	No	<a href="#">more</a>
V1637 — Windshield Molding Damaged	0	No	<a href="#">more</a>
V1638 — Left A-pillar Damaged	0	No	<a href="#">more</a>
V1639 — Right A-pillar Damaged	0	No	<a href="#">more</a>
V1640 — Center Console Damaged	1	Yes	<a href="#">more</a>
V1641 — Transmission Lever Damaged	0	No	<a href="#">more</a>
V1642 — Horn/Spoke Shroud Damaged	0	No	<a href="#">more</a>
V1643 — Upper Panel Damaged	0	No	<a href="#">more</a>
V1644 — Mid Panel Damaged	0	No	<a href="#">more</a>
V1645 — Lower Panel Damaged	0	No	<a href="#">more</a>
V1646 — Ashtray Damaged	0	No	<a href="#">more</a>
V1647 — Control Knob/Lever Damaged	0	No	<a href="#">more</a>
V1648 — Glove Compartment Area Damaged	0	No	<a href="#">more</a>
V1649 — Instruments Damaged	0	No	<a href="#">more</a>
V1650 — Park Brake Release Damaged	8	Not applicable	<a href="#">more</a>
V1651 — Park Brake Pedal Damaged	8	Not applicable	<a href="#">more</a>
V1652 — A/C Or Upper Vent Damaged	0	No	<a href="#">more</a>
V1653 — Heater Or A/C Duct Damaged	0	No	<a href="#">more</a>
V1654 — Radio Damaged	0	No	<a href="#">more</a>
V1655 — Other Item Damaged	8	Not applicable	<a href="#">more</a>
V1656 — Rear Window Damaged	0	No	<a href="#">more</a>
V1657 — Rear Window Header Damaged	0	No	<a href="#">more</a>
V1658 — Vertical Console Damaged	0	No	<a href="#">more</a>
V1659 — Roof Console Damaged	0	No	<a href="#">more</a>

## Case Vehicle Seats

[Back to Top](#)

Variable Number and Name	Code Value	Code Description	Other Options

V1701 — Driver Front Seat Type	05	Bucket	<a href="#">more</a>
V1702 — Passenger Front Seat Type	05	Bucket	<a href="#">more</a>
V1703 — Driver Seat Mount Type	1	Standard	<a href="#">more</a>
V1704 — Passenger Seat Mount Type	1	Standard	<a href="#">more</a>
V1705 — Driver Swivel Mechanism Equipped	0	No	<a href="#">more</a>
V1706 — Passenger Swivel Mechanism Equipped	0	No	<a href="#">more</a>
V1707 — Driver Seat Original Equipment	1	Yes	<a href="#">more</a>
V1708 — Passenger Seat Original Equipment	1	Yes	<a href="#">more</a>
V1709 — Driver Seat/Rear Occupant Contact	8	Not applicable	<a href="#">more</a>
V1710 — Passenger Seat/Rear Occupant Contact	8	Not applicable	<a href="#">more</a>
V1711 — Driver Seat Damage	0	None	<a href="#">more</a>
V1712 — Passenger Seat Damage	0	None	<a href="#">more</a>
V1713 — Center Front Armrest Damaged	0	No	<a href="#">more</a>
V1714 — Driver Seat Rotation	0	None apparent	<a href="#">more</a>
V1715 — Passenger Seat Rotation	0	None apparent	<a href="#">more</a>
V1716 — Driver Seat-back Type	3	Reclining	<a href="#">more</a>
V1717 — Passenger Seat-back Type	3	Reclining	<a href="#">more</a>
V1718 — Driver Seat-back Lock Type	3	Power	<a href="#">more</a>
V1719 — Passenger Seat-back Lock Type	1	Manual	<a href="#">more</a>
V1720 — Driver Seat-back Lock Held	1	Yes	<a href="#">more</a>
V1721 — Passenger Seat-back Lock Held	1	Yes	<a href="#">more</a>
V1722 — Driver Recliner Mechanism Held	1	Yes	<a href="#">more</a>
V1723 — Passenger Recliner Mechanism Held	1	Yes	<a href="#">more</a>
V1724 — Driver Head Restraint Type	1	Adjustable	<a href="#">more</a>
V1725 — Passenger Head Restraint Type	1	Adjustable	<a href="#">more</a>

V1726 — Driver Head Rest Removed	0	No	<a href="#">more</a>
V1727 — Passenger Head Rest Removed	0	No	<a href="#">more</a>
V1728 — Driver Head Rest Adjustment	1	Up	<a href="#">more</a>
V1729 — Passenger Head Rest Adjustment	2	Down	<a href="#">more</a>
V1730 — Driver Head Rest Damage	0	None	<a href="#">more</a>
V1731 — Passenger Head Rest Damage	0	None	<a href="#">more</a>
V1732 — Driver Seat Adjustment Type	2	Power	<a href="#">more</a>
V1733 — Passenger Seat Adjustment Type	1	Manual	<a href="#">more</a>
V1734 — Driver Seat Adjustment Provided	7	Other	<a href="#">more</a>
V1735 — Passenger Seat Adjustment Provided	1	2-way	<a href="#">more</a>
V1736 — Driver Seat Adjuster Damage	0	None	<a href="#">more</a>
V1737 — Passenger Seat Adjuster Damage	0	None	<a href="#">more</a>
V1738 — Driver Seat Adjuster Separation	8	Not applicable	<a href="#">more</a>
V1739 — Passenger Seat Adjuster Separation	8	Not applicable	<a href="#">more</a>
V1740 — Driver Seat Pre-crash Position	3	Rearward	<a href="#">more</a>
V1741 — Passenger Seat Pre-crash Position	3	Rearward	<a href="#">more</a>
V1742 — Left Rear Seat Type	6	Luggage area access panel	<a href="#">more</a>
V1743 — Right Rear Seat Type	6	Luggage area access panel	<a href="#">more</a>
V1744 — Left Rear Seat Damaged	0	None	<a href="#">more</a>
V1745 — Right Rear Seat Damaged	0	None	<a href="#">more</a>
V1746 — Center Rear Armrest Damaged	0	No	<a href="#">more</a>
V1747 — Left Rear Seat-back Left Lock Equipped	0	No	<a href="#">more</a>
V1748 — Right Rear Seat-back Left Lock Equipped	8	Not applicable	<a href="#">more</a>
V1749 — Left Rear Seat-back Left Lock Held	8	Not applicable	<a href="#">more</a>

V1750 — Right Rear Seat-back Left Lock Held	8	Not applicable	<a href="#">more</a>
V1751 — Left Rear Seat-back Right Lock Equipped	8	Not applicable	<a href="#">more</a>
V1752 — Right Rear Seat-back Right Lock Equipped	1	Yes	<a href="#">more</a>
V1753 — Left Rear Seat-back Right Lock Held	8	Not applicable	<a href="#">more</a>
V1754 — Right Rear Seat-back Right Lock Held	0	No	<a href="#">more</a>
V1755 — Left 3rd Seat Equipped	0	No	<a href="#">more</a>
V1756 — Right 3rd Seat Equipped	0	No	<a href="#">more</a>
V1757 — Left 3rd Seat Backrest Damaged	8	Not applicable	<a href="#">more</a>
V1758 — Right 3rd Seat Backrest Damaged	8	Not applicable	<a href="#">more</a>
V1759 — Left 3rd Seat Cushion Damaged	8	Not applicable	<a href="#">more</a>
V1760 — Right 3rd Seat Cushion Damaged	8	Not applicable	<a href="#">more</a>
V1761 — Rear Head Restraints	1	Equipped	<a href="#">more</a>



PPK 193 857 737



















2219

2219





























2219















WARNING

WARNING

SPS

2279

1-26







WARNING

C12 SP5

2279













WARNING

SP5

20









Safety belts must be worn

Cutlass S



**WARNING**  
DEATH or SERIOUS INJURY can occur if the back seat is not properly secured for use as a bed. Always use proper tie-down technique to secure the load. Always use proper tie-down technique to secure the load.



AIRBAG



























1 FT & IN 2 3 cm 4 5 6 7 8 9 10 11 12 13 14 15 16 17 18 19 20 21 22 23

MANUFACTURED BY H&B P.O. BOX 1002 TC

STUD CENTERS

OFF ON RESUME

1 2 3 4 5 6 7

10 20 30 40 50 60 70 80 90 100 110

SEEK

NXT

SRC





























**WARNING**  
Airbag deployment is not intended for use in vehicles equipped with a manual transmission. Airbag deployment is not intended for use in vehicles equipped with a manual transmission. Airbag deployment is not intended for use in vehicles equipped with a manual transmission.

















2219

4  
2  
3  
1  
T





93



2.0i















2219

435  
4 ✓  
RS-2  
key ✓  
Citi  
X

JUNIOR-DALBY

4572



2R3

K-2000











































ONLY







ONLY

ONLY







**WARNING**

Do not attempt to repair or modify the seat belt system. The seat belt system must be replaced if this vehicle is in a collision or if "Replace seat belt System" appears below. See owners manual.

**Replace  
Seatbelt System**