

## Case 429 : Narrative

Case Vehicle (A): 2002 Chevrolet	Vehicle (B): 1997 Chevrolet
Type: Venture, 4-door minivan	Type: S10, 4x2, 2-door pickup
Driver: 79-year-old male	Driver: 18-year-old male
CDC: 12-FYEW-3	CDC: 99-0000-0

### SITUATION

[1](#) [2](#) [3](#) [4](#) It was daylight, the sky was clear, and the asphalt road surface was dry and free of defects as case vehicle (A) was traveling west at an unknown speed in the westbound lane of a two-lane east-west road with a posted speed limit of 55 mph (89 kph). [5](#) [6](#) [7](#) Vehicle (B) was traveling south at an unknown speed in the southbound lane of a two-lane north-south road and had stopped at a stop sign at a T-type intersection with the east-west roadway. [8](#) The driver of vehicle (B) did not see case vehicle (A) and accelerated into the westbound lane in front of case vehicle (A), while turning left to travel east on the east-west road. The driver of case vehicle (A) braked but was unable to stop and the left front of case vehicle (A) struck the left side of vehicle (B). Both vehicles were towed from the scene due to damage.

The police accident report (PAR) indicates A-level injuries for the driver of case vehicle (A) and C-level injuries for the driver of vehicle (B). The driver of case vehicle (A) was transported to a local hospital and was admitted for treatment. The driver of vehicle (B) declined treatment at the scene.

### GENERAL VEHICLE DAMAGE AND ESTIMATED CRASH SEVERITIES

[9](#) [10](#) Direct damage from the offset-frontal impact was to the left front of case vehicle (A). Damage began at the left-front bumper corner and extended 77-cm across the front resulting in 51% vehicle overlap (% VOL). [11](#) The maximum rearward crush at bumper level was 47 cm and it occurred at the left-front bumper corner.

Vehicle (B) was not available for inspection.

Using the missing-vehicle algorithm of the WinSMASH crash-reconstruction program and [11](#) [12](#) [13](#) [14](#) [15](#) crush profiles for case vehicle (A), the following impact severities were estimated:

Vehicle	Variable	Estimated Velocity Change - kph (mph)		
		Total	Longitudinal	Latitudinal
Case Vehicle (A)	delta V	52 (32)	-51 (-32)	-9 (-6)
Case Vehicle (B)	delta V	65 (41)	-11 (-7)	64 (40)

### DESCRIPTION OF DAMAGE TO CASE VEHICLE (A)

#### Exterior

[16](#) In the front, the left section of the bumper was crushed rearward, [17](#) the bumper cover was cracked, there were scrape marks and paint transfer marks on the left corner, and the bumper cover was completely separated from its attachments. The left corner of the bumper support structure was crushed rearward into the radiator and it was pulled forward at the right corner. The left headlight assembly was crushed rearward and completely damaged but there was no damage to the right headlight assembly. [18](#) The left front of the hood was crushed rearward and down and the back of the hood was displaced up but it did not contact the windshield. The hood latch was damaged but not jammed, [19](#) the left hood hinge was severely bent, and [20](#) the right hinge was slightly bent. [21 22](#) The windshield was cracked and punctured with 22 cm of bond separation in the lower-left corner due to contact by the cowl, which was displaced rearward.

[23 24](#) On the left side, the fender and left-front wheel were crushed rearward, resulting in a 9-cm decrease in the left wheelbase, but the wheel was not damaged. [25 26](#) The upper section of the left A-pillar was displaced rearward, the roof siderail was bent up, and the roof was buckled. [24](#) The lower section of the left A-pillar and the driver door were also displaced rearward, the driver door was jammed shut and buckled, and the [27](#) left-rear door was displaced rearward but it was operational. There was no other damage to the left side of the vehicle.

[28](#) There was no damage to the rear of case vehicle (A). [29 30 31](#) On the right side there was no damage and there was no significant change in the right wheelbase.

## Interior

[32](#) This vehicle was equipped with steering-wheel and dash-mounted frontal-impact airbags and both deployed during the frontal impact. The front-row seats were also equipped with seatback-mounted side-impact airbags, which did not deploy. In the driver area, there were no contact marks on, or damage to, [33](#) the steering-wheel airbag or [34](#) the airbag-module cover. [34 35 36](#) There was no damage to the steering-wheel spokes, hub, or rim, and there was no rotation of the steering column. The A-pillar was displaced rearward and [37](#) there were diagonal cracks emanating from the base of the windshield due to cowl deformation, which resulted in 22 cm of bond separation at the lower-left corner. [38 39](#) There was a small crack in the knee-bolster cover under the steering wheel and the cover was slightly displaced rearward. [40](#) The brake release pedal was pushed forward and the toe pan was displaced rearward. [41 42 43 44 45](#) There was no other damage in the driver area.

In the center-front area, [46](#) there were diagonal cracks in the windshield due to contact by the cowl but [45 46 47](#) there was no other damage. [47](#) The center seat console of this vehicle had been replaced with an electronic module with a flat plastic cover that contains the control and power modules for an after-market mechanism that allows the right-front passenger seat to rotate and move out of the vehicle to facilitate ingress and egress for people with limited mobility.

In the right-front seating area, [48](#) there was no damage to the dash-mounted airbag or [49](#) to the airbag module cover. [50](#) There were diagonal cracks in the windshield due to cowl deformation but [45 51 52](#) there was no other damage in the right-front seating area. [53 54 55 56 57 58](#) The right-front seat was mounted to the vehicle by an electrically powered mechanism that allows the seat to rotate and move out of the vehicle to facilitate ingress and egress, but there was no damage to the seat or to the mechanism.

[59 60](#) In the second row, the right-side seatback was folded down and jammed but [59 60 61 62 63 64](#) there was no other damage in the rear seating area of the vehicle.

The following intrusions were noted and measured:

Location	Component	Distance (cm)	Direction
left front	A-pillar	3	to rear
	instrument panel	7	to rear
	toepan	9	to rear

## OCCUPANT KINEMATICS AND INJURIES

[65](#) The 173-cm, 104-kg (5-ft 8-in, 230-lb) 79-year-old male driver was using the three-point-belt with pretensioner, and the pretensioner and steering-wheel airbag deployed. There were webbing loading marks [66](#) on the D-ring and [67 68](#) on the continuous loop, confirming belt use at the time of the crash. During the offset-frontal impact, the driver moved forward and slightly to the right relative to the interior of the vehicle, into the three-point belt and the steering-wheel airbag. He sustained a contusion to the superior aspect of the scalp on the left side of the head from contact with an unknown source, and he sustained cervical strain due to impact forces and/or due to the head contact that caused the contusion. He sustained four unspecified rib fractures, probably from loading by the shoulder belt, and he sustained contusions across the abdomen due to loading by the lap belt. He sustained an unspecified left pelvic fracture, possibly from knee contact with the knee bolster.

The following table and [69](#) attached drawing summarize the injuries sustained by the belted driver of case vehicle (A).

Occupant: Driver	Age: 79 years	Gender: Male		
Restraints: 3-point belt with pretensioner; steering-wheel airbag	Stature: 173 cm (5 ft, 8 in)	Mass: 104 kg (230 lb)		
Injury Description	A.I.S.	Injury Source		
		Definite	Probable	Possible
—	—	—	—	—
Fracture, unspecified left pelvis	2	—	—	Knee bolster
Fractures, four unspecified ribs	3	—	Shoulder belt	—
Cervical strain	1	—	—	Impact forces; head contact with unknown source
Contusion, superior aspect on the left side of the head	1	Unknown	—	—
Contusions, across the abdomen	1	Lap belt	—	—
Maximum A.I.S. Level	3	—	—	—
Injury Severity Score	14	—	—	—

CASE NO.: 429

CASE VEHICLE: 2002 Chevrolet

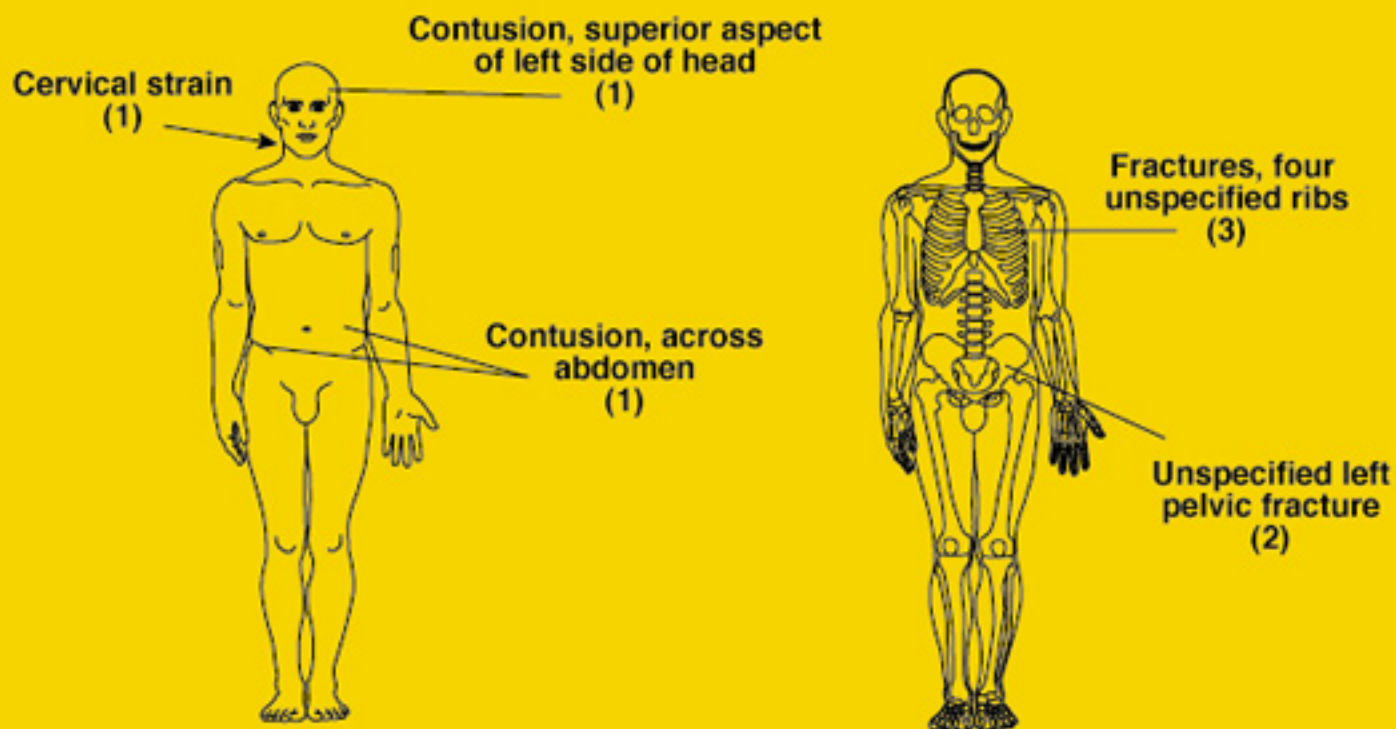
TYPE: Venture, 4-door minivan

OCCUPANT: (Driver) 79-year-old male

STATURE: 173 cm (5 ft, 8 in) MASS: 104 kg (230 lb)

RESTRAINTS: 3-point belt with pretensioner; steering-wheel airbag

SEVERITY: MAIS - 3 ISS - 4



Case No.: 429

Case Vehicle (A): 2002 Chevrolet

Type: Venture, 4-door minivan

Driver: 79-year-old male

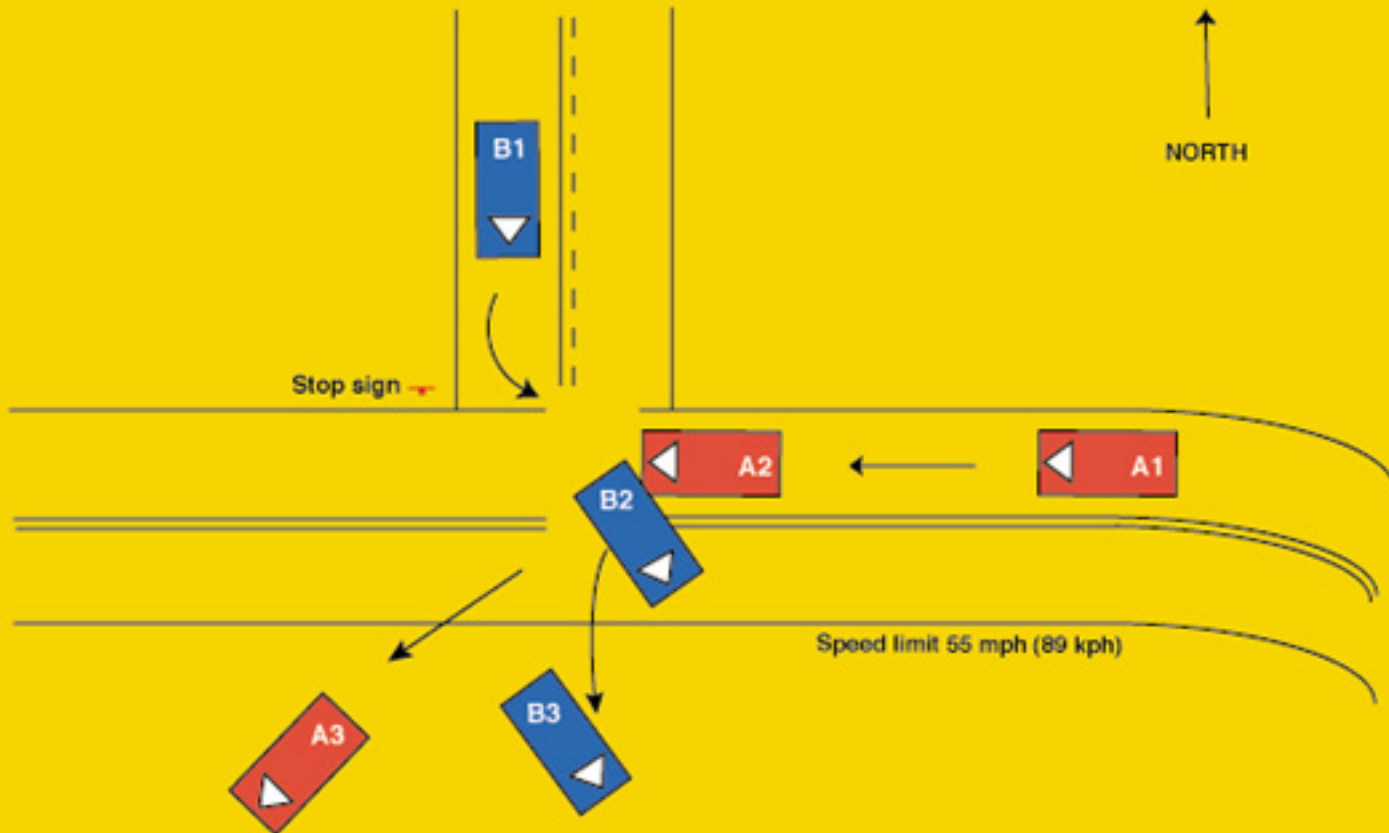
Vehicle (B): 1997 Chevrolet S10, 4x2, 2-door pickup

Light Conditions: Daylight

Weather: Clear

Road Surface: Dry

Road Construction: Asphalt



# Vehicle Report

Click on Section Name to jump directly to that Section —

- [General Conditions](#)
- [Other Vehicle](#)
- [Case Vehicle General](#)
- [Case Vehicle Damage Description](#)
- [Crash Severity](#)
- [Case Vehicle Tires & Rims](#)
- [Case Vehicle Fuel, Tank, Fire](#)
- [Case Vehicle Exterior](#)
- [Case Vehicle Steering Column/Rim](#)
- [Case Vehicle Intrusion](#)
- [Case Vehicle Airbag\(s\)](#)
- [Case Vehicle Interior](#)
- [Case Vehicle Seats](#)

---

## General Conditions

[Back to Top](#)

Variable Number and Name	Code Value	Code Description	Other Options
V206 — Urban/Rural Area	2	Rural	<a href="#">more</a>
V207 — Limited Access Highway	0	No	<a href="#">more</a>
V208 — Road Total Lanes	2	2 lanes	<a href="#">more</a>
V209 — Intersecting Road Total Lanes	2	2 lanes	<a href="#">more</a>
V210 — Road Surface Type	1	Asphalt	<a href="#">more</a>
V211 — Road Defects	0	No	<a href="#">more</a>
V212 — Construction Zone	0	No	<a href="#">more</a>
V213 — Road Alignment Vertical Plane	1	Level	<a href="#">more</a>
V214 — Road Alignment Horizontal Plane	1	Straight	<a href="#">more</a>
V215 — Surface Covering	10	Dry	<a href="#">more</a>
V216 — Visibility Limitation	0	None	<a href="#">more</a>
V217 — Visibility Obstruction	0	None	<a href="#">more</a>
V218 — Speed Limit	6	86-90 km/h .. 55 mph	<a href="#">more</a>
V219 — Precipitation Type	0	None	<a href="#">more</a>
V220 — Precipitation Rate	8	Not applicable	<a href="#">more</a>
V221 — Temperature	9	Unknown	<a href="#">more</a>

V222 — Crosswind	9	Unknown	<a href="#">more</a>
V223 — Light Conditions	1	Daylight	<a href="#">more</a>
V224 — Mechanical Malfunction Mention	0	No	<a href="#">more</a>
V225 — Case Vehicle and Object	0	No	<a href="#">more</a>
V226 — Case Vehicle Rollover	0	No	<a href="#">more</a>
V227 — Case Vehicle Ran Off Roadway	0	No	<a href="#">more</a>
V228 — Moving Case Vehicle/Contacted Moving Vehicle	1	Yes	<a href="#">more</a>
V229 — Case Vehicle/Contacted Stopped Vehicle	0	No	<a href="#">more</a>
V230 — Stopped Case Vehicle/Contactd Vehicle	0	No	<a href="#">more</a>
V231 — Total Vehicles Hit By Case Vehicle	1	1 vehicle	<a href="#">more</a>
V232 — Any Fire in Crash	0	No	<a href="#">more</a>
V233 — Max Police Severity-PAR	3	A - Incapacitating Injury	<a href="#">more</a>
V234 — Driver Alcohol Involvement	0	Had not been drinking	<a href="#">more</a>
V235 — Driver Alcohol BAC	80	Not tested	<a href="#">more</a>
V236 — Driver Impairment Mention	0	No	<a href="#">more</a>
V237 — Driven/Towed From Scene	2	Towed Due to Damage	<a href="#">more</a>

## Other Vehicle

[Back to Top](#)

Variable Number and Name	Code Value	Code Description	Other Options
V301 — Other Vehicle VIN	1GCCS1445V81	—	—
V302 — Other Vehicle Manufacturer/Body Code	11312	—	—
V303 — Other Vehicle Manufacturer	113	Chevrolet	<a href="#">more</a>
V304 — Other Vehicle Body Code	12	Pickup truck (no canopy or shell)	<a href="#">more</a>
V305 — Other Vehicle Make/Model	2920	S-10/T-10 Pickup	<a href="#">more</a>
V306 — Other Vehicle Model Year	1997	—	—
V307 — Other Vehicle Mass	001475 kg	—	—
V308 — Other Vehicle Number	0	No separate report	<a href="#">more</a>
V309 — Other Vehicle Number of Occupants	01	—	—
V310 — Other Vehicle Traveling Speed	999	Unknown	<a href="#">more</a>

V311 — Highest Police Injury Severity	1	C - Possible Injury	<a href="#">more</a>
V312 — Other Vehicle Type	12	Pickup truck	<a href="#">more</a>
V313 — Other Vehicle Wheelbase (cm)	275 cm	—	—
V314 — Average Track Width	139 cm	—	—
V315 — Overall Length	479 cm	—	—
V316 — Overall Width (OAW)	173 cm	—	—
V317 — Front Overhang (FOH)	090 cm	—	—
V318 — Rear Overhang (ROH)	115 cm	—	—
V319 — Undeformed End Width (UEW)	148 cm	—	—
V320 — Engine Displacement	2.2 l	—	—
V321 — Engine: Number of Cylinders	04	—	—
V322 — Direct Damage Length (DDL)	999	Unknown	<a href="#">more</a>
V323 — Front-End Overlap % (FEO)	99	Missing or Not applicable	<a href="#">more</a>
V324 — Vehicle Overlap % (VOL)	99	Missing or Not applicable	<a href="#">more</a>

## Case Vehicle General



[Click for case vehicle figure](#)

[Back to Top](#)

Variable Number and Name	Code Value	Code Description	Other Options
V401 — VIN	1GCCS1445V81	—	—
V402 — Manufacturer/Body Code	11311	—	—
V403 — Vehicle Manufacturer	113	Chevrolet	<a href="#">more</a>
V404 — Vehicle Body Code	11	—	—
V405 — Make/Model Code	2940	—	—
V406 — Model Year	2002	—	—
V407 — Vehicle Mass	001761 kg	—	—
V408 — Odometer Reading	888888	—	—
V409 — Number of Occupants	01	—	—
V410 — Traveling Speed	999	Unknown	<a href="#">more</a>
V411 — Body Type	24	Van (small)	<a href="#">more</a>
V412 — Stolen Vehicle	8	Not currently collected	<a href="#">more</a>
V413 — Body Structure	2	Unitized	<a href="#">more</a>
V414 — Transmission Type	1	Automatic	<a href="#">more</a>
	3		



V415 — Transmission Lever Location		Column	<a href="#">more</a>
V416 — Steering	1	Power	<a href="#">more</a>
V417 — Brakes	1	Power	<a href="#">more</a>
V418 — Brake Type	2	Disc - front wheels	<a href="#">more</a>
V419 — Brake Anti-lock Device	2	Four-wheel	<a href="#">more</a>
V420 — Air Conditioning in Vehicle	8	Not currently collected	<a href="#">more</a>
V421 — Drive Type	2	Front wheel	<a href="#">more</a>
V422 — Dual Rear Wheels	0	No	<a href="#">more</a>
V423 — Original Restraint System Type	3	Airbag	<a href="#">more</a>
V424 — Equipped With Roll Bar	0	No	<a href="#">more</a>
V425 — Roof Type	1	Solid	<a href="#">more</a>
V426 — Wheelbase	305 cm	—	—
V427 — Anti-lacerative Glass	0	None	<a href="#">more</a>
V428 — Average Track Width	159 cm	—	—
V429 — Overall Length	510 cm	—	—
V430 — Overall Width (OAW)	183 cm	—	—
V431 — Front Overhang	094 cm	—	—
V432 — Rear Overhang	111 cm	—	—
V433 — Undeformed End Width (UEW)	150 cm	—	—
V434 — Engine Displacement	3.4 l	—	—
V435 — Engine: Number of Cylinders	06	—	—
V436 — Direct Damage Length (DDL)	077 cm	—	—
V437 — Front End Overlap % (FEO)	51	—	—
V438 — Vehicle Overlap % (VOL)	51	—	—

## Case Vehicle

### Damage Description

[Back to Top](#)

Variable Number and Name	Code Value	Code Description	Other Options
V501 — Maximum Crush - Front	047 cm	—	—
V502 — Maximum Crush - Right Side	000 cm	No crush (or less than 1 cm.)	<a href="#">more</a>
V503 — Maximum Crush - Rear	000 cm	No crush (or less than 1 cm.)	<a href="#">more</a>
V504 — Maximum Crush - Left Side	000 cm	No crush (or less than 1 cm.)	<a href="#">more</a>

V505 — Maximum Crush - Roof	000 cm	No crush (or less than 1 cm.)	<a href="#">more</a>
V506 — Maximum Crush - Other	000 cm	No crush (or less than 1 cm.)	<a href="#">more</a>
V507 — Are Events In Chronological Order	1	Yes	<a href="#">more</a>
V508 — Event 1 Impact Location	1	On Roadway	<a href="#">more</a>
V509 — Event 1 Impact Configuration	13	FRONT of case veh - SIDE of contacted Vehicle	<a href="#">more</a>
V510 — Event 1 Object/Vehicle Contacted	12	Pickup truck	<a href="#">more</a>
V511 — Event 2 Impact Location	8	No 2nd event	<a href="#">more</a>
V512 — Event 2 Impact Configuration	88	No 2nd event	<a href="#">more</a>
V513 — Event 2 Object/Vehicle Contacted	00	No object/vehicle contacted	<a href="#">more</a>
V514 — Event 3 Impact Location	8	No 3rd event	<a href="#">more</a>
V515 — Event 3 Impact Configuration	88	No 3rd event	<a href="#">more</a>
V516 — Event 3 Object/Vehicle Contacted	00	No object/vehicle contacted	<a href="#">more</a>
V517 — Event 4 Impact Location	8	No 4th event	<a href="#">more</a>
V518 — Event 4 Impact Configuration	88	No 4th event	<a href="#">more</a>
V519 — Event 4 Object/Vehicle Contacted	00	No object/vehicle contacted	<a href="#">more</a>
V520 — Event 5 Impact Location	8	No 5th event	<a href="#">more</a>
V521 — Event 5 Impact Configuration	88	No 5th event	<a href="#">more</a>
V522 — Event 5 Object/Vehicle Contacted	00	No object/vehicle contacted	<a href="#">more</a>
V523 — Event 6 Impact Location	8	No 6th event	<a href="#">more</a>
V524 — Event 6 Impact Configuration	88	No 6th event	<a href="#">more</a>
V525 — Event 6 Object/Vehicle Contacted	00	No object/vehicle contacted	<a href="#">more</a>
V526 — Event 7 Impact On Road	8	No 7th event	<a href="#">more</a>
V527 — Event 7 Impact Configuration	88	No 7th event	<a href="#">more</a>
V528 — Event 7 Object/Vehicle Contacted	00	No object/vehicle contacted	<a href="#">more</a>
V529 — Primary CDC Case Vehicle -event Number	1	Event 1	<a href="#">more</a>
V530 — Primary CDC Case Vehicle	999		

- impact speed		Unknown	<a href="#">more</a>
V531 — Primary CDC Case Vehicle - Estimated By	1	Investigator	<a href="#">more</a>
V532 — Primary CDC Case Vehicle -crush	047	—	—
V533 — Primary CDC Case Vehicle -clock #1	12	12 o'clock	<a href="#">more</a>
V534 — Primary CDC Case Vehicle letter 1 #1	06	F - Front	<a href="#">more</a>
V535 — Primary CDC Case Vehicle letter 2 #1	25	Y - Side or end (F + P or L + C)	<a href="#">more</a>
V536 — Primary CDC Case Vehicle letter 3 #1	05	E - Everything below belt line	<a href="#">more</a>
V537 — Primary CDC Case Vehicle letter 4 #1	23	W - Wide impact area	<a href="#">more</a>
V538 — Primary CDC Case Vehicle Extent #1	03	Extent 3	<a href="#">more</a>
V539 — Primary CDC Case Vehicle -CDC #1	12FYEW3	—	—
V541 — Primary CDC Case Vehicle letter 1 #2	00	Missing Data/Not applicable	<a href="#">more</a>
V542 — Primary CDC Case Vehicle letter 2 #2	00	Missing Data/Not applicable	<a href="#">more</a>
V543 — Primary CDC Case Vehicle letter 3 #2	00	Missing Data/Not applicable	<a href="#">more</a>
V544 — Primary CDC Case Vehicle letter 4 #2	00	Missing Data/Not applicable	<a href="#">more</a>
V545 — Primary CDC Case Vehicle Extent #2	00	Missing Data/Not applicable	<a href="#">more</a>
V546 — Primary CDC Case Vehicle -CDC #2	9800000	—	—
V547 — Primary CDC Contacted Vehicle - Impact Speed	999	Unknown	<a href="#">more</a>
V548 — Primary CDC Contacted Vehicle - Estimated By	1	Investigator	<a href="#">more</a>
V549 — Primary CDC Contacted Vehicle -crush	999	Unknown	<a href="#">more</a>
V550 — Primary CDC Contacted Vehicle -clock #1	99	Unknown or no damage	<a href="#">more</a>
V551 — Primary CDC Contacted Vehicle letter 1 #1	00	Missing Data/Not applicable	<a href="#">more</a>
V552 — Primary CDC Contacted Vehicle letter 2 #1	00	Missing Data/Not applicable	<a href="#">more</a>

V553 — Primary CDC Contacted Vehicle letter 3 #1	00	Missing Data/Not applicable	<a href="#">more</a>
V554 — Primary CDC Contacted Vehicle letter 4 #1	00	Missing Data/Not applicable	<a href="#">more</a>
V555 — Primary CDC Contacted Vehicle Extent #1	00	Missing Data/Not applicable	<a href="#">more</a>
V556 — Primary CDC Contacted Vehicle -CDC #1	9900000	—	—
V558 — Primary CDC Contacted Vehicle letter 1 #2	00	Missing Data/Not applicable	<a href="#">more</a>
V559 — Primary CDC Contacted Vehicle letter 2 #2	00	Missing Data/Not applicable	<a href="#">more</a>
V560 — Primary CDC Contacted Vehicle letter 3 #2	00	Missing Data/Not applicable	<a href="#">more</a>
V561 — Primary CDC Contacted Vehicle letter 4 #2	00	Missing Data/Not applicable	<a href="#">more</a>
V562 — Primary CDC Contacted Vehicle Extent #2	00	Missing Data/Not applicable	<a href="#">more</a>
V563 — Primary CDC Contacted Vehicle -CDC #2	9800000	—	—
V564 — Secondary CDC Case Vehicle - Event No	8	Not applicable	<a href="#">more</a>
V565 — Secondary CDC Case Vehicle - Impact Speed	998	Not Applicable	<a href="#">more</a>
V566 — Secondary CDC Case Vehicle - Estimated By	8	Not applicable (no vehicle/no impact)	<a href="#">more</a>
V567 — Secondary CDC Case Vehicle -crush	998	Not Applicable	<a href="#">more</a>
V568 — Secondary CDC Case Vehicle -clock #1	98	Not Applicable	<a href="#">more</a>
V569 — Secondary CDC Case Vehicle letter 1 #1	00	Missing Data/Not applicable	<a href="#">more</a>
V570 — Secondary CDC Case Vehicle letter 2 #1	00	Missing Data/Not applicable	<a href="#">more</a>
V571 — Secondary CDC Case Vehicle letter 3 #1	00	Missing Data/Not applicable	<a href="#">more</a>
V572 — Secondary CDC Case Vehicle letter 4 #1	00	Missing Data/Not applicable	<a href="#">more</a>
V573 — Secondary CDC Case Vehicle Extent #1	00	Missing Data/Not applicable	<a href="#">more</a>
V574 — Secondary CDC Case Vehicle -CDC #1	9800000	—	—
V576 — Secondary CDC Case	00	Missing Data/Not applicable	<a href="#">more</a>

Vehicle letter 1 #2			
V577 — Secondary CDC Case Vehicle letter 2 #2	00	Missing Data/Not applicable	<a href="#">more</a>
V578 — Secondary CDC Case Vehicle letter 3 #2	00	Missing Data/Not applicable	<a href="#">more</a>
V579 — Secondary CDC Case Vehicle letter 4 #2	00	Missing Data/Not applicable	<a href="#">more</a>
V580 — Secondary CDC Case Vehicle Extent #2	00	Missing Data/Not applicable	<a href="#">more</a>
V581 — Secondary CDC Case Vehicle -CDC #2	9800000	—	—
V582 — Secondary CDC Contacted Vehicle - Impact Speed	998	Not Applicable	<a href="#">more</a>
V583 — Secondary CDC Contacted Vehicle - Estimated By	8	Not applicable (no vehicle/no impact)	<a href="#">more</a>
V584 — Secondary CDC Contacted Vehicle -crush	998	Not Applicable	<a href="#">more</a>
V585 — Secondary CDC Contacted Vehicle -clock #1	98	Not Applicable	<a href="#">more</a>
V586 — Secondary CDC Contacted Vehicle letter 1 #1	00	Missing Data/Not applicable	<a href="#">more</a>
V587 — Secondary CDC Contacted Vehicle letter 2 #1	00	Missing Data/Not applicable	<a href="#">more</a>
V588 — Secondary CDC Contacted Vehicle letter 3 #1	00	Missing Data/Not applicable	<a href="#">more</a>
V589 — Secondary CDC Contacted Vehicle letter 4 #1	00	Missing Data/Not applicable	<a href="#">more</a>
V590 — Secondary CDC Contacted Vehicle Extent #1	00	Missing Data/Not applicable	<a href="#">more</a>
V591 — Secondary CDC Contacted Vehicle -CDC #1	9800000	—	—
V593 — Secondary CDC Contacted Vehicle letter 1 #2	00	Missing Data/Not applicable	<a href="#">more</a>
V594 — Secondary CDC Contacted Vehicle letter 2 #2	00	Missing Data/Not applicable	<a href="#">more</a>
V595 — Secondary CDC Contacted Vehicle letter 3 #2	00	Missing Data/Not applicable	<a href="#">more</a>
V596 — Secondary CDC Contacted Vehicle letter 4 #2	00	Missing Data/Not applicable	<a href="#">more</a>
V597 — Secondary CDC Contacted Vehicle Extent #2	00	Missing Data/Not applicable	<a href="#">more</a>
V598 — Secondary CDC Contacted Vehicle -CDC #2	9800000	—	—

## Crash Severity

[Back to Top](#)

Variable Number and Name	Code Value	Code Description	Other Options
V601 — Case Vehicle Primary Impact Number	1	—	—
V602 — Primary Impact Total Delta-V	052 kph	—	—
V603 — Primary Case Vehicle Reconstructed Longitudinal Delta-V	-051 kph	—	—
V604 — Primary Case Vehicle Reconstructed Lateral Delta-V	-009 kph	—	—
V605 — Primary Case Vehicle Reconstructed Crush Energy	0132 kJ	—	—
V606 — Primary Impact Case Vehicle - reconstruction	22	Reconstructed, moderate confidence level	<a href="#">more</a>
V607 — Primary Case Vehicle Reconstruction Mode	2	CDC & detailed damage	<a href="#">more</a>
V608 — Primary Contacted Vehicle Reconstructed	065 kph	—	—

Total Delta-V			
V609 — Primary Contacted Vehicle Reconstructed Longitudinal Delta-V	-011 kph	—	—
V610 — Primary Contacted Vehicle Reconstructed Lateral Delta- V	0064 kph	—	—
V611 — Primary Contacted Vehicle Reconstructed Crush Energy	0357 kJ	—	—
V612 — Case Vehicle Secondary Impact Number	8	—	—
V613 — Secondary Case Vehicle Reconstructed Total Delta-V	888	N/A	<a href="#">more</a>
V614 — Secondary Case Vehicle Reconstructed Longitudinal Delta-V	8888	—	—
V615 — Secondary Case Vehicle Reconstructed Lateral Delta- V	8888	—	—
V616 — Secondary Case Vehicle Reconstructed Crush Energy	8888	—	—

V617 — Secondary Case Vehicle Reconstruction Note	88	—	—
V618 — Secondary Case Vehicle Reconstruction Mode	8	Not applicable	<a href="#">more</a>
V619 — Secondary Contacted Vehicle Reconstructed Total Delta-V	888	N/A	<a href="#">more</a>
V620 — Secondary Contacted Vehicle Reconstructed Longitudinal Delta-V	8888	—	—
V621 — Secondary Contacted Vehicle Reconstructed Lateral Delta- V	8888	—	—
V622 — Secondary Contacted Vehicle Reconstructed Crush Energy	8888	—	—
V623 — Case Vehicle Primary Impact Number	1	—	—
V624 — Primary Case Vehicle Reconstructed Total EBS	052 kph	—	—
V625 — Primary Case	-051 kph		



Vehicle Reconstructed Longitudinal EBS			—	—
V626 — Primary Case Vehicle Reconstructed Lateral EBS	-009 kph		—	—
V627 — Primary Case Vehicle Reconstructed Crush Energy	0132 kJ		—	—
V628 — Primary Case Vehicle Reconstruction Note	22		Reconstructed, moderate confidence level	<a href="#">more</a>
V629 — Primary Case Vehicle Reconstruction Mode	2		CDC & detailed damage	<a href="#">more</a>
V630 — Primary Contacted Vehicle Reconstruction Total EBS	065 kph		—	—
V631 — Primary Contacted Vehicle Reconstruction Longitudinal EBS	-011 kph		—	—
V632 — Primary Contacted Vehicle Reconstruction Lateral EBS	0064 kph		—	—
V633 — Primary Contacted Vehicle Reconstruction	0357 kJ		—	—

Crush Energy			
V634 — Case Vehicle Secondary Impact Number	8	Not applicable	<a href="#">more</a>
V635 — Secondary Case Vehicle Reconstruction Total EBS	888	N/A	<a href="#">more</a>
V636 — Secondary Case Vehicle Reconstruction Longitudinal EBS	8888	—	—
V637 — Secondary Case Vehicle Reconstruction Lateral EBS	8888	—	—
V638 — Secondary Case Vehicle Reconstruction Crush Energy	8888	—	—
V639 — Secondary Case Vehicle Reconstruction Note	88	—	—
V640 — Secondary Case Vehicle Reconstruction Mode	8	Not applicable	<a href="#">more</a>
V641 — Secondary Contacted Vehicle Reconstruction Total EBS	888	N/A	<a href="#">more</a>
V642 — Secondary Contacted Vehicle	8888	—	—

Reconstruction Longitudinal EBS			
V643 — Secondary Contacted Vehicle Reconstruction Lateral EBS	8888	—	—
V644 — Secondary Contacted Vehicle Reconstruction Crush Energy	8888	—	—
V645 — Case Vehicle Reconstructed Impact Number	1	—	—
V646 — Case Vehicle Impact 1 Plane	1	Bumper	<a href="#">more</a>
V647 — Case Vehicle Impact 1 Direct Damage Length [DDL]	077 cm	—	—
V648 — Case Vehicle Impact 1 Max Crush	047 cm	—	—
V649 — Case Vehicle Impact 1 Field-L	113 cm	—	—
V650 — Case Vehicle Impact 1 C1	047 cm	—	—
V651 — Case Vehicle Impact 1 C2	046 cm	—	—
V652 — Case Vehicle Impact 1 C3	043 cm	—	—
V653 — Case	042 cm		

Vehicle Impact 1 C4		—	—
V654 — Case Vehicle Impact 1 C5	016 cm	—	—
V655 — Case Vehicle Impact 1 C6	000 cm	No Crush	<a href="#">more</a>
V656 — Case Vehicle Impact 1 +/- D	-036 cm	—	—
V657 — Case Vehicle Reconstructed Impact Number	2	—	—
V658 — Case Vehicle Impact 2 Plane	8	Not applicable	<a href="#">more</a>
V659 — Case Vehicle Impact 2 Direct Damage Length [DDL]	998	Not applicable	<a href="#">more</a>
V660 — Case Vehicle Impact 2 Max Crush	998	Not applicable	<a href="#">more</a>
V661 — Case Vehicle Impact 2 Field-L	998	Not applicable	<a href="#">more</a>
V662 — Case Vehicle Impact 2 C1	998	Not applicable	<a href="#">more</a>
V663 — Case Vehicle Impact 2 C2	998	Not applicable	<a href="#">more</a>
V664 — Case Vehicle Impact 2 C3	998	Not applicable	<a href="#">more</a>
V665 — Case Vehicle Impact 2 C4	998	Not applicable	<a href="#">more</a>
V666 — Case	998		

Vehicle Impact 2 C5		Not applicable	<a href="#">more</a>
V667 — Case Vehicle Impact 2 C6	998	Not applicable	<a href="#">more</a>
V668 — Case Vehicle Impact 2 +/- D	9998	—	—
V669 — Other Vehicle Reconstructed Impact Number	1	—	—
V670 — Other Vehicle Impact 1 Plane	9	Unknown	<a href="#">more</a>
V671 — Other Vehicle Impact 1 Direct Damage Length [DDL]	999	Unknown	<a href="#">more</a>
V672 — Other Vehicle Impact 1 Max Crush	999	Unknown	<a href="#">more</a>
V673 — Other Vehicle Impact 1 Field-L	999	Unknown	<a href="#">more</a>
V674 — Other Vehicle Impact 1 C1	999	Unknown	<a href="#">more</a>
V675 — Other Vehicle Impact 1 C2	999	Unknown	<a href="#">more</a>
V676 — Other Vehicle Impact 1 C3	999	Unknown	<a href="#">more</a>
V677 — Other Vehicle Impact 1 C4	999	Unknown	<a href="#">more</a>
V678 — Other Vehicle Impact 1 C5	999	Unknown	<a href="#">more</a>
V679 — Other	999		

Vehicle Impact 1 C6		Unknown	<a href="#">more</a>
V680 — Other Vehicle Impact 1 +/- D	0999 cm	—	—
V681 — Other Vehicle Reconstructed Impact Number	2	—	—
V682 — Other Vehicle Impact 2 Plane	8	Not applicable	<a href="#">more</a>
V683 — Other Vehicle Impact 2 Direct Damage Length [DDL]	998	Not applicable	<a href="#">more</a>
V684 — Other Vehicle Impact 2 Max Crush	998	Not applicable	<a href="#">more</a>
V685 — Other Vehicle Impact 2 Field-L	998	Not applicable	<a href="#">more</a>
V686 — Other Vehicle Impact 2 C1	998	Not applicable	<a href="#">more</a>
V687 — Other Vehicle Impact 2 C2	998	Not applicable	<a href="#">more</a>
V688 — Other Vehicle Impact 2 C3	998	Not applicable	<a href="#">more</a>
V689 — Other Vehicle Impact 2 C4	998	Not applicable	<a href="#">more</a>
V690 — Other Vehicle Impact 2 C5	998	Not applicable	<a href="#">more</a>
V691 — Other Vehicle Impact 2 C6	998	Not applicable	<a href="#">more</a>
V692 — Other	9998		

Vehicle Impact 2 +/- D		—	—
---------------------------	--	---	---

### Case Vehicle Tires & Rims

[Back to Top](#)

Variable Number and Name	Code Value	Code Description	Other Options
V701 — Left Front Wheel Damaged	0	No	<a href="#">more</a>
V702 — Right Front Wheel Damaged	0	No	<a href="#">more</a>
V703 — Right Rear Wheel Damaged	0	No	<a href="#">more</a>
V704 — Left Rear Wheel Damaged	0	No	<a href="#">more</a>
V705 — Left Front Tire Tread Type	4	All Weather	<a href="#">more</a>
V706 — Right Front Tire Tread Type	4	All Weather	<a href="#">more</a>
V707 — Right Rear Tire Tread Type	4	All Weather	<a href="#">more</a>
V708 — Left Rear Tire Tread Type	4	All Weather	<a href="#">more</a>
V709 — Left Front Carcass Construction	3	Radial	<a href="#">more</a>
V710 — Right Front Carcass Construction	3	Radial	<a href="#">more</a>
V711 — Right Rear Carcass Construction	3	Radial	<a href="#">more</a>
V712 — Left Rear Carcass Construction	3	Radial	<a href="#">more</a>
V717 — Left Front Tire Size	P215701R15	—	—
V718 — Right Front Tire Size	P215701R15	—	—
V719 — Right Rear Tire Size	P215701R15	—	—
V720 — Left Rear Tire Size	P215701R15	—	—

### Case Vehicle Fuel, Tank, Fire

[Back to Top](#)

Variable Number and Name	Code Value	Code Description	Other Options
V801 — Propulsive Fuel Type	1	Gasoline	<a href="#">more</a>
V802 — Main Tank Location	322	Within frame/centered laterally -	<a href="#">more</a>

		within vertically	
V803 — Main Filler Cap Location	213	Left of frame laterally - above vertically	<a href="#">more</a>
V804 — Main Tank Material	1	Steel	<a href="#">more</a>
V805 — Aux Tank Type	8	Not applicable (not equipped)	<a href="#">more</a>
V806 — Aux Tank Location	888	Not applicable (not equipped)	<a href="#">more</a>
V807 — Aux Filler Cap Location	888	Not applicable (not equipped)	<a href="#">more</a>
V808 — Aux Tank Material	8	Not applicable	<a href="#">more</a>
V901 — Fuel Leakage From Crash	0	No	<a href="#">more</a>
V1001 — Fire In Or On Case Vehicle	0	No	<a href="#">more</a>



## Case Vehicle Exterior

[Back to Top](#)

Variable Number and Name	Code Value	Code Description	Other Options
V1101 — Hood Latch Released	0	No	<a href="#">more</a>
V1102 — Hood Latch Damaged	1	Yes	<a href="#">more</a>
V1103 — Hood Latch Jammed	0	No	<a href="#">more</a>
V1104 — Left Hood Hinge Damaged	1	Yes	<a href="#">more</a>
V1105 — Left Hood Hinge Separated	0	No	<a href="#">more</a>
V1106 — Right Hood Hinge Damaged	1	Yes	<a href="#">more</a>
V1107 — Right Hood Hinge Separated	0	No	<a href="#">more</a>
V1108 — Hood Remained On Vehicle	1	Yes	<a href="#">more</a>
V1109 — Rear Hood Edge Elevated	1	Yes	<a href="#">more</a>
V1110 — Edge Contacted Windshield	0	No	<a href="#">more</a>
V1111 — Edge Penetrated Windshield	8	Not applicable	<a href="#">more</a>
V1112 — Hood Latch Location	1	Front of Vehicle	<a href="#">more</a>
V1113 — Eng/Transmissn Mount Separation	0	No	<a href="#">more</a>
V1114 — Sterng Column Flex Coupling	9	Unknown if equipped	<a href="#">more</a>
V1115 — Sterng Column Coupling Damaged	9	Unknown	<a href="#">more</a>
V1116 — Sterng Column Coupling Separated	9	Unknown	<a href="#">more</a>
V1117 — Eng Comp Telescopng Unit	88	Not collected	<a href="#">more</a>
V1118 — Comp Orig/Telescopd Diff	888	Not collected	<a href="#">more</a>
V1119 — Left Side Body Mount	8		



Separation		Not applicable (unitized)	<a href="#">more</a>
V1120 — Upper Left A-pillar Separation	4	No separation, but damaged	<a href="#">more</a>
V1121 — Lower Left A-pillar Separation	4	No separation, but damaged	<a href="#">more</a>
V1122 — Upper Left B-pillar Separation	0	No	<a href="#">more</a>
V1123 — Lower Left B-pillar Separation	0	No	<a href="#">more</a>
V1124 — Upper Left C-pillar Separation	0	No	<a href="#">more</a>
V1125 — Lower Left C-pillar Separation	0	No	<a href="#">more</a>
V1126 — Upper Left D-pillar Separation	0	No	<a href="#">more</a>
V1127 — Lower Left D-pillar Separation	0	No	<a href="#">more</a>
V1128 — Left Front Door Opening Cause	0	Door did not open	<a href="#">more</a>
V1129 — Left Rear Door Opening Cause	0	Door did not open	<a href="#">more</a>
V1130 — Left Front Door Jammed Closed	1	Yes	<a href="#">more</a>
V1131 — Left Rear Door Jammed Closed	0	No	<a href="#">more</a>
V1132 — Rear Door Type	2	One-way tailgate	<a href="#">more</a>
V1133 — Rear Door Opening Cause	0	Door did not open	<a href="#">more</a>
V1134 — Rear Door Jammed Closed	0	No	<a href="#">more</a>
V1135 — Luggage Partition Damagd	8	Not applicable	<a href="#">more</a>
V1136 — Spare Tire Status	8	Not collected	<a href="#">more</a>
V1137 — Trailer Hitch Type	0	No hitch	<a href="#">more</a>
V1138 — Trailer Type	0	No trailer	<a href="#">more</a>
V1139 — Right Side Body Mount Separation	8	Not applicable (unitized)	<a href="#">more</a>
V1140 — Upper Right A-pillar Separation	0	No	<a href="#">more</a>
V1141 — Lower Right A-pillar Separation	0	No	<a href="#">more</a>
V1142 — Upper Right B-pillar Separation	0	No	<a href="#">more</a>
V1143 — Lower Right B-pillar Separation	0	No	<a href="#">more</a>

V1144 — Upper Right C-pillar Separation	0	No	<a href="#">more</a>
V1145 — Lower Right C-pillar Separation	0	No	<a href="#">more</a>
V1146 — Upper Right D-pillar Separation	0	No	<a href="#">more</a>
V1147 — Lower Right D-pillar Separation	0	No	<a href="#">more</a>
V1148 — Right Front Door Opening Cause	00	Door did not open	<a href="#">more</a>
V1149 — Right Rear Door Opening Cause	00	Door did not open	<a href="#">more</a>
V1150 — Right Front Door Jammed Closed	0	No	<a href="#">more</a>
V1151 — Right Rear Door Jammed Closed	0	No	<a href="#">more</a>
V1152 — Van Rear Door Type	4	Track (sliding)-right & left side	<a href="#">more</a>
V1153 — Windshield Cracked		Yes	<a href="#">more</a>
V1154 — Windshield Broken	1	Yes	<a href="#">more</a>
V1155 — Windshield Cracked or Broken by Occupant	0	No	<a href="#">more</a>
V1156 — Bond Separation Extent	1	1 - 20%	<a href="#">more</a>
V1157 — Windshield Code		—	—
V1158 — Did Sun/T Roof Open	8	Not Applicable	<a href="#">more</a>

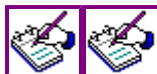
**Case Vehicle  
Steering  
Column/Rim**

[Back to Top](#)

Variable Number and Name	Code Value	Code Description	Other Options
V1201 — Steering Wheel Rim Damage	0	None	<a href="#">more</a>
V1202 — Number of Steering Wheel	2		

Spokes		2 spokes	<a href="#">more</a>
V1203 — Steering Wheel Spoke Damage	0	None	<a href="#">more</a>
V1204 — Column Tilt Feature	3	Middle	<a href="#">more</a>
V1205 — Column Swing-away Feature	0	Not equipped	<a href="#">more</a>
V1206 — Column Telescoping Feature	0	Not equipped	<a href="#">more</a>
V1207 — Wheel Energy Absorb Device	8	Not collected	<a href="#">more</a>
V1208 — Wheel Ea Orig/Damaged Diff	888	Not collected	<a href="#">more</a>
V1209 — Column Energy Absorb Device	88	Not collected	<a href="#">more</a>
V1210 — Column Ea Orig/Comprss Diff	888	Not collected	<a href="#">more</a>
V1211 — Shear Capsule Separation	888	Not collected	<a href="#">more</a>
V1212 — Column Vertical Rotation	0	No apparent rotation	<a href="#">more</a>
V1213 — Column Lateral Rotation	0	No apparent rotation	<a href="#">more</a>
V1214 — Steering Wheel Hub Damage	0	None	<a href="#">more</a>

## Case Vehicle Intrusion



Click for intrusion figures

[Back to Top](#)

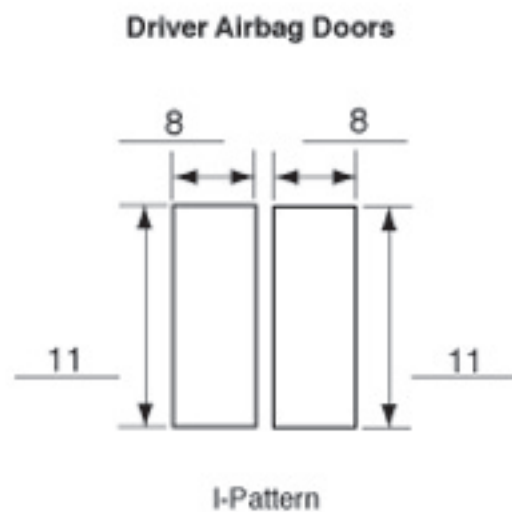
Variable Number and Name	Code Value	Code Description	Other Options
V1301 — Occupant Compartment Intrusion	1	Yes	<a href="#">more</a>
V1302 — Was Intrusion Catastrophic	0	No	<a href="#">more</a>
V1303 — Intrusion Number 01	01	Intrusion #1	<a href="#">more</a>
V1304 — Intrusion 01 Occupant Space Number	11	First row, Left seat	<a href="#">more</a>
V1305 — Intrusion 01 Intruding Object	08	A-pillar	<a href="#">more</a>
V1306 — Intrusion 01 Assoc Event Number	1	Event #1	<a href="#">more</a>
V1307 — Intrusion 01 Max Intrusion X-axis	03 cm	—	—
V1308 — Intrusion 01 Max Intrusion Y-axis	00 cm	0 cm or No Intrusion	<a href="#">more</a>
V1309 — Intrusion 01 Max Intrusion	00 cm		

Z-axis		0 cm or No Intrusion	<a href="#">more</a>
V1310 — Intrusion 01 Occupant Number	01	Occupant number 1, contact	<a href="#">more</a>
V1311 — Intrusion 01 Injury Number	00	No injury or no intrusion	<a href="#">more</a>
V1312 — Intrusion 01 Occupant Number	00	No contact or no intrusion	<a href="#">more</a>
V1313 — Intrusion 01 Injury Number	00	No injury or no intrusion	<a href="#">more</a>
V1314 — Intrusion Number 02	02	Intrusion #2	<a href="#">more</a>
V1315 — Intrusion 02 Occupant Space Number	11	First row, Left seat	<a href="#">more</a>
V1316 — Intrusion 02 Intruding Object	01	Instrument panel	<a href="#">more</a>
V1317 — Intrusion 02 Assoc Event Number	1	Event #1	<a href="#">more</a>
V1318 — Intrusion 02 Max Intrusion X-axis	07 cm	—	—
V1319 — Intrusion 02 Max Intrusion Y-axis	00 cm	0 cm or No Intrusion	<a href="#">more</a>
V1320 — Intrusion 02 Max Intrusion Z-axis	00 cm	0 cm or No Intrusion	<a href="#">more</a>
V1321 — Intrusion 02 Occupant Number	01	Occupant number 1, contact	<a href="#">more</a>
V1322 — Intrusion 02 Injury Number	00	No injury or no intrusion	<a href="#">more</a>
V1323 — Intrusion 02 Occupant Number	00	No contact or no intrusion	<a href="#">more</a>
V1324 — Intrusion 02 Injury Number	00	No injury or no intrusion	<a href="#">more</a>
V1325 — Intrusion Number 03	03	Intrusion #3	<a href="#">more</a>
V1326 — Intrusion 03 Occupant Space Number	11	First row, Left seat	<a href="#">more</a>
V1327 — Intrusion 03 Intruding Object	03	Toe pan	<a href="#">more</a>
V1328 — Intrusion 03 Assoc Event Number	1	Event #1	<a href="#">more</a>
V1329 — Intrusion 03 Max Intrusion X-axis	09 cm	—	—
V1330 — Intrusion 03 Max Intrusion Y-axis	00 cm	0 cm or No Intrusion	<a href="#">more</a>
V1331 — Intrusion 03 Max Intrusion Z-axis	00 cm	0 cm or No Intrusion	<a href="#">more</a>
V1332 — Intrusion 03 Occupant Number	01	Occupant number 1, contact	<a href="#">more</a>
V1333 — Intrusion 03 Injury Number	00	No injury or no intrusion	<a href="#">more</a>

V1334 — Intrusion 03 Occupant Number	00	No contact or no intrusion	<a href="#">more</a>
V1335 — Intrusion 03 Injury Number	00	No injury or no intrusion	<a href="#">more</a>
V1336 — Intrusion Number 04	00	No Intrusion, None	<a href="#">more</a>
V1337 — Intrusion 04 Occupant Space Number	00	No Intrusion, None	<a href="#">more</a>
V1338 — Intrusion 04 Intruding Object	00	No Intrusion, None	<a href="#">more</a>
V1339 — Intrusion 04 Assoc Event Number	0	No Intrusion, None	<a href="#">more</a>
V1340 — Intrusion 04 Max Intrusion X-axis	00 cm	0 cm or No Intrusion	<a href="#">more</a>
V1341 — Intrusion 04 Max Intrusion Y-axis	00 cm	0 cm or No Intrusion	<a href="#">more</a>
V1342 — Intrusion 04 Max Intrusion Z-axis	00 cm	0 cm or No Intrusion	<a href="#">more</a>
V1343 — Intrusion 04 Occupant Number	00	No contact or no intrusion	<a href="#">more</a>
V1344 — Intrusion 04 Injury Number	00	No injury or no intrusion	<a href="#">more</a>
V1345 — Intrusion 04 Occupant Number	00	No contact or no intrusion	<a href="#">more</a>
V1346 — Intrusion 04 Injury Number	99	Contact, injury unknown or data not collected	<a href="#">more</a>
V1347 — Intrusion Number 05	00	No Intrusion, None	<a href="#">more</a>
V1348 — Intrusion 05 Occupant Space Number	00	No Intrusion, None	<a href="#">more</a>
V1349 — Intrusion 05 Intruding Object	00	No Intrusion, None	<a href="#">more</a>
V1350 — Intrusion 05 Assoc Event Number	0	No Intrusion, None	<a href="#">more</a>
V1351 — Intrusion 05 Max Intrusion X-axis	00 cm	0 cm or No Intrusion	<a href="#">more</a>
V1352 — Intrusion 05 Max Intrusion Y-axis	00 cm	0 cm or No Intrusion	<a href="#">more</a>
V1353 — Intrusion 05 Max Intrusion Z-axis	00 cm	0 cm or No Intrusion	<a href="#">more</a>
V1354 — Intrusion 05 Occupant Number	00	No contact or no intrusion	<a href="#">more</a>
V1355 — Intrusion 05 Injury Number	00	No injury or no intrusion	<a href="#">more</a>
V1356 — Intrusion 05 Occupant Number	00	No contact or no intrusion	<a href="#">more</a>
V1357 — Intrusion 05 Injury Number	99	Contact, injury unknown or data not collected	<a href="#">more</a>

V1358 — Intrusion Number 06	00	No Intrusion, None	<a href="#">more</a>
V1359 — Intrusion 06 Occupant Space Number	00	No Intrusion, None	<a href="#">more</a>
V1360 — Intrusion 06 Intruding Object	00	No Intrusion, None	<a href="#">more</a>
V1361 — Intrusion 06 Assoc Event Number	0	No Intrusion, None	<a href="#">more</a>
V1362 — Intrusion 06 Max Intrusion X-axis	00 cm	0 cm or No Intrusion	<a href="#">more</a>
V1363 — Intrusion 06 Max Intrusion Y-axis	00 cm	0 cm or No Intrusion	<a href="#">more</a>
V1364 — Intrusion 06 Max Intrusion Z-axis	00 cm	0 cm or No Intrusion	<a href="#">more</a>
V1365 — Intrusion 06 Occupant Number	00	No contact or no intrusion	<a href="#">more</a>
V1366 — Intrusion 06 Injury Number	00	No injury or no intrusion	<a href="#">more</a>
V1367 — Intrusion 06 Occupant Number	00	No contact or no intrusion	<a href="#">more</a>
V1368 — Intrusion 06 Injury Number	99	Contact, injury unknown or data not collected	<a href="#">more</a>
V1369 — Intrusion Number 07	00	No Intrusion, None	<a href="#">more</a>
V1370 — Intrusion 07 Occupant Space Number	00	No Intrusion, None	<a href="#">more</a>
V1371 — Intrusion 07 Intruding Object	00	No Intrusion, None	<a href="#">more</a>
V1372 — Intrusion 07 Assoc Event Number	0	No Intrusion, None	<a href="#">more</a>
V1373 — Intrusion 07 Max Intrusion X-axis	00 cm	0 cm or No Intrusion	<a href="#">more</a>
V1374 — Intrusion 07 Max Intrusion Y-axis	00 cm	0 cm or No Intrusion	<a href="#">more</a>
V1375 — Intrusion 07 Max Intrusion Z-axis	00 cm	0 cm or No Intrusion	<a href="#">more</a>
V1376 — Intrusion 07 Occupant Number	00	No contact or no intrusion	<a href="#">more</a>
V1377 — Intrusion 07 Injury Number	00	No injury or no intrusion	<a href="#">more</a>
V1378 — Intrusion 07 Occupant Number	00	No contact or no intrusion	<a href="#">more</a>
V1379 — Intrusion 07 Injury Number	99	Contact, injury unknown or data not collected	<a href="#">more</a>
V1380 — Intrusion Number 08	00	No Intrusion, None	<a href="#">more</a>
V1381 — Intrusion 08 Occupant Space Number	00	No Intrusion, None	<a href="#">more</a>

V1382 — Intrusion 08 Intruding Object	00	No Intrusion, None	<a href="#">more</a>
V1383 — Intrusion 08 Assoc Event Number	0	No Intrusion, None	<a href="#">more</a>
V1384 — Intrusion 08 Max Intrusion X-axis	00 cm	0 cm or No Intrusion	<a href="#">more</a>
V1385 — Intrusion 08 Max Intrusion Y-axis	00 cm	0 cm or No Intrusion	<a href="#">more</a>
V1386 — Intrusion 08 Max Intrusion Z-axis	00 cm	0 cm or No Intrusion	<a href="#">more</a>
V1387 — Intrusion 08 Occupant Number	00	No contact or no intrusion	<a href="#">more</a>



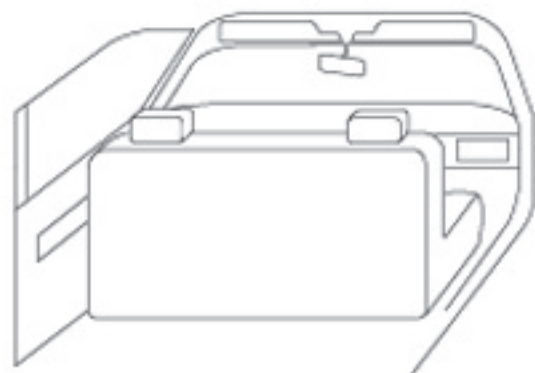
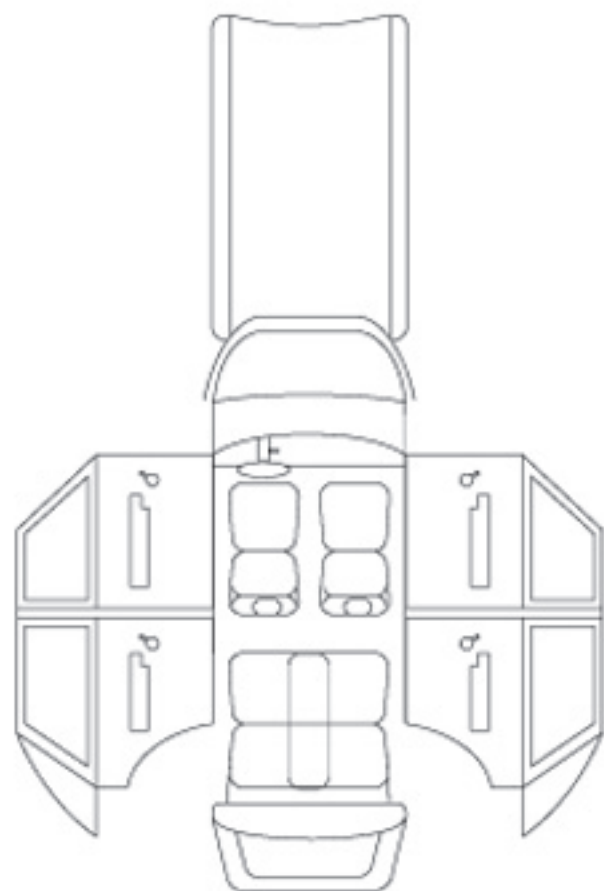
Vents:  Y  N

if yes, how many: 2  
vents @ 11 and 1 o'clock

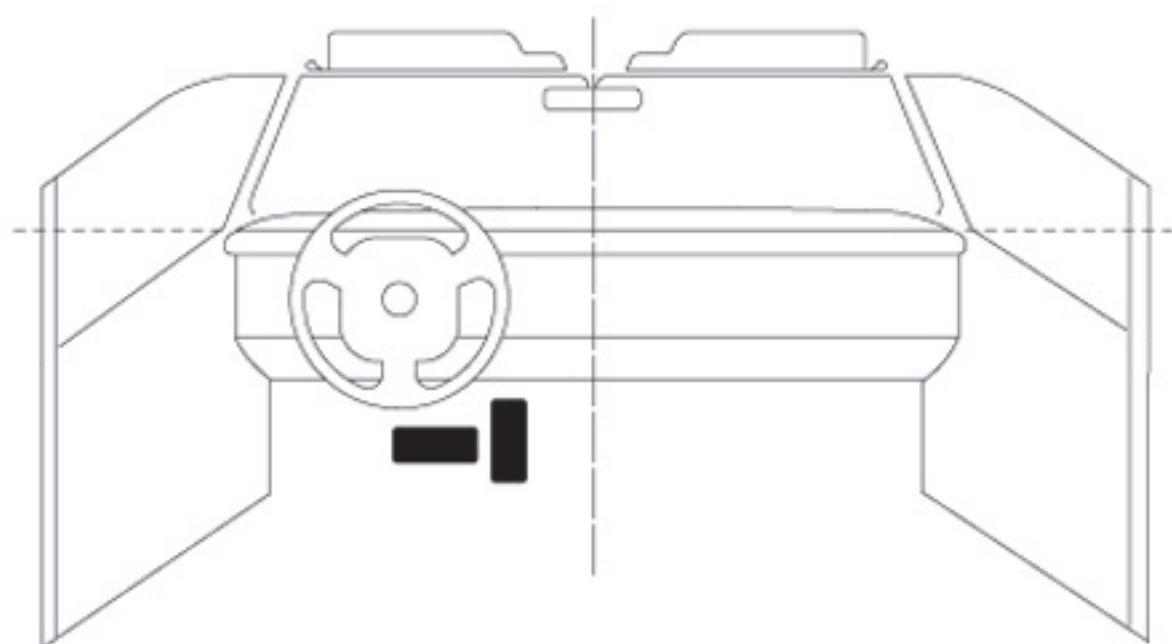
Tethers:  Y  N

if yes, how many: 4





NO OCCUPANT CONTACTS



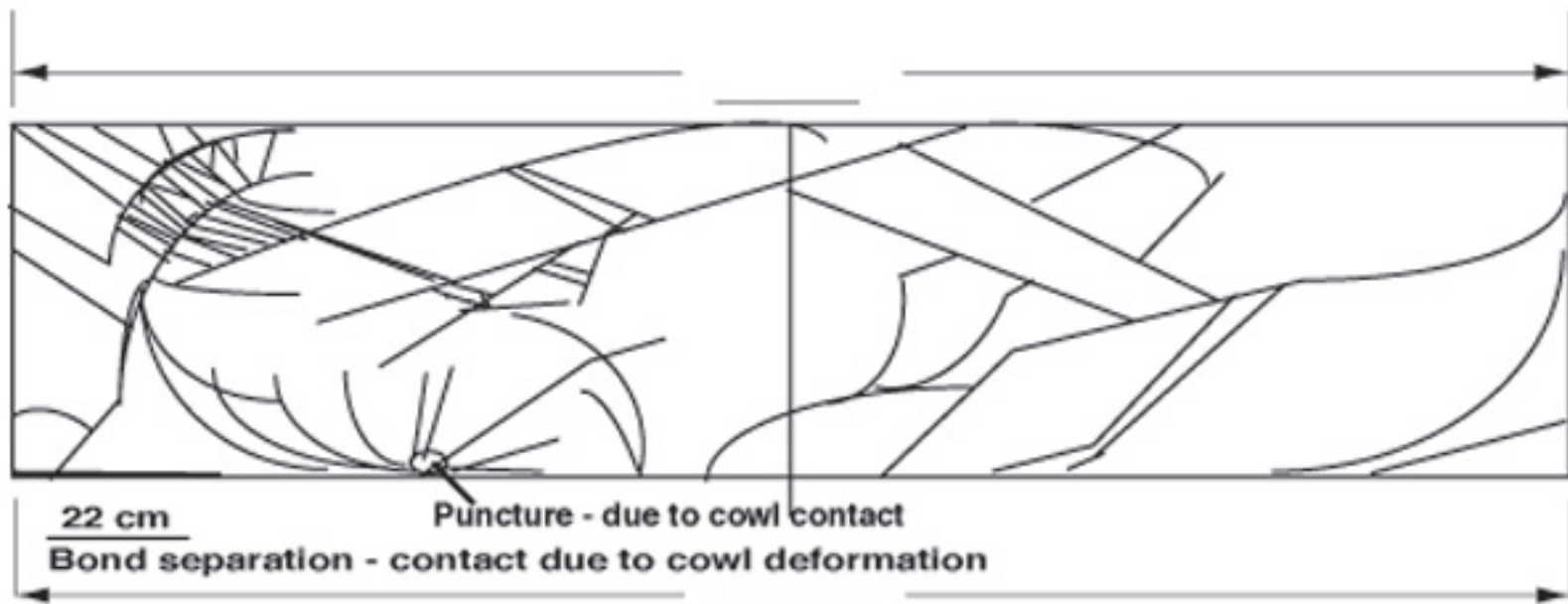
1 = Definitely 2 = Probably 3 = Possible

**INTRUSION IT-1**

Location of Intrusion	Intruded Component	(All Measurements Are in Centimeters)					Dominant Crush Direction
		Comparison Value	–	Intruded Value	=	Intrusion	
11	A-pillar	61	–	58	=	3	Rear
11	Instrument panel	76	–	69	=	7	Rear
11	Toe pan	64	–	55	=	9	Rear

**OCCUPANT CONTACT WORKSHEET - NO OCCUPANT CONTACTS**

Contact	Interior Component Contacted	Occupant No. if Known	Body Region if Known	Supporting Physical Evidence	Confidence Level of Contact Point
A					
B					
C					
D					
E					
F					
G					
H					
I					
J					
K					

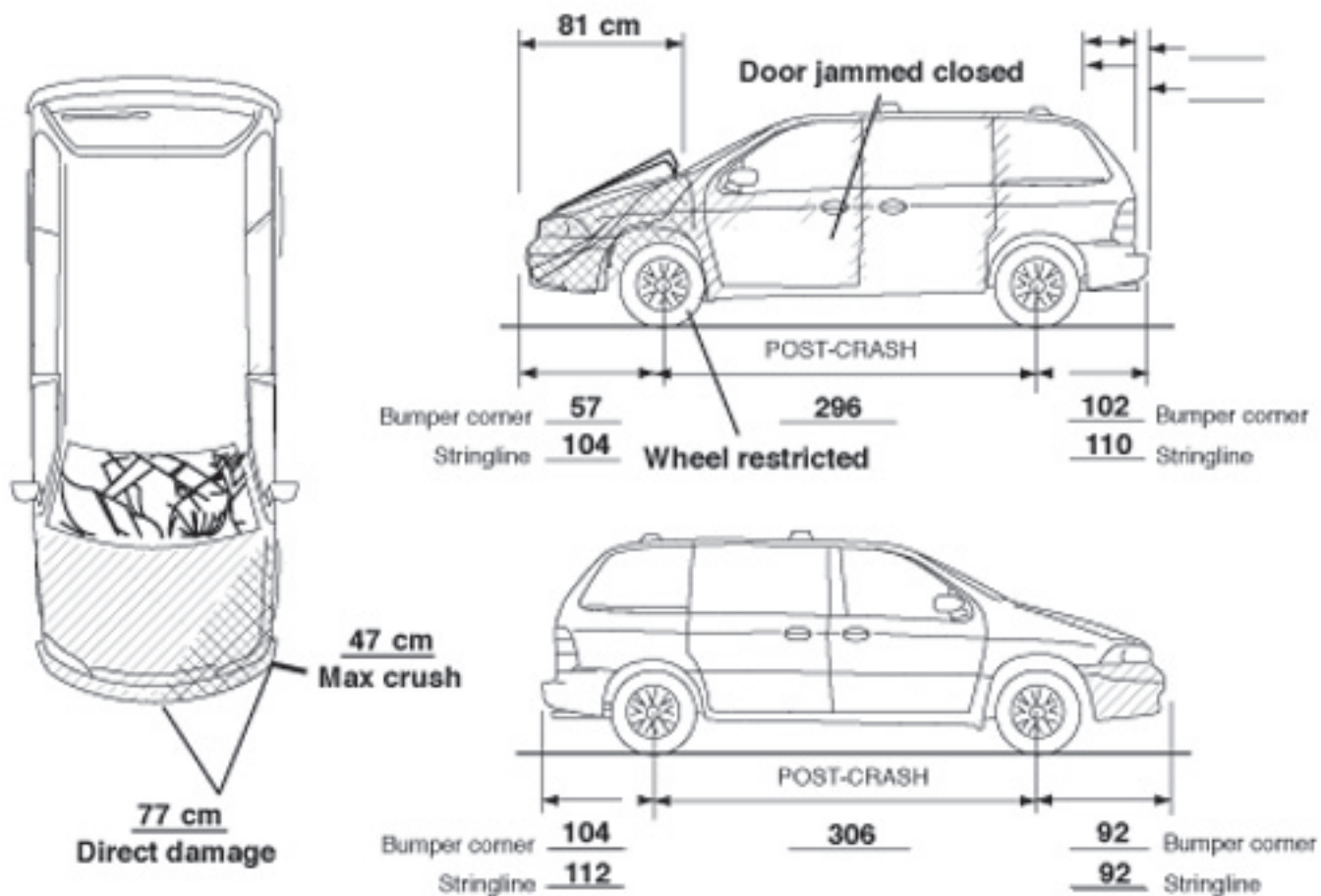
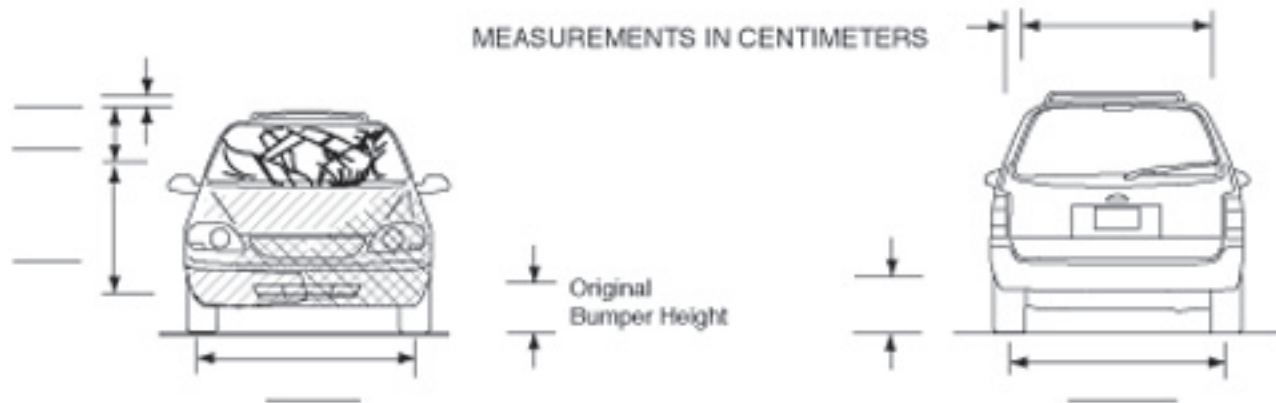


WINDSHIELD MARK ON CASE VEHICLE:

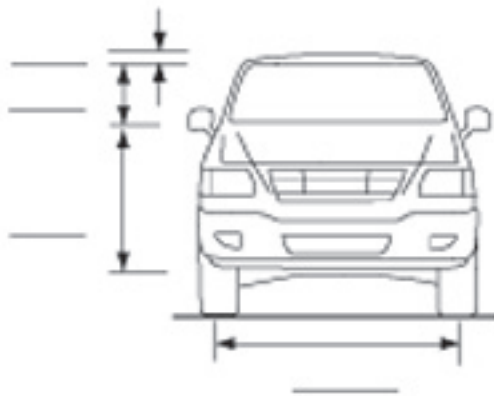
SHADED  
SOLAR RAY

SAFETY		FLO-LITE
AS1		1 2
2	LAMINATED	4
DOT 18	M405	

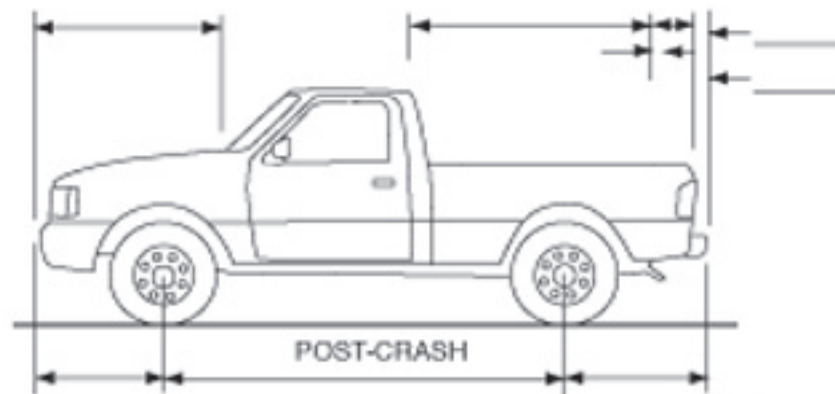
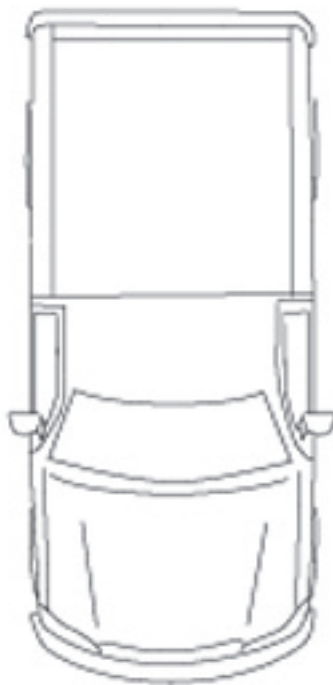
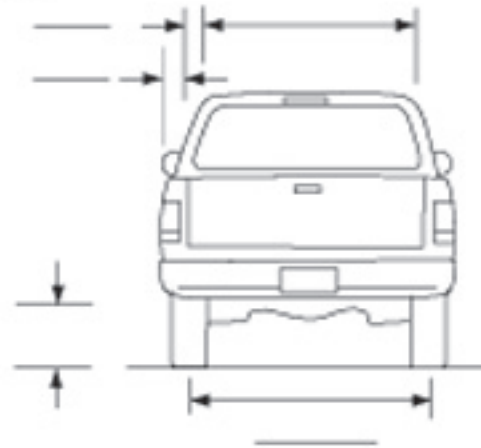
MEASUREMENTS IN CENTIMETERS



MEASUREMENTS IN CENTIMETERS  
**VEHICLE NOT INSPECTED**

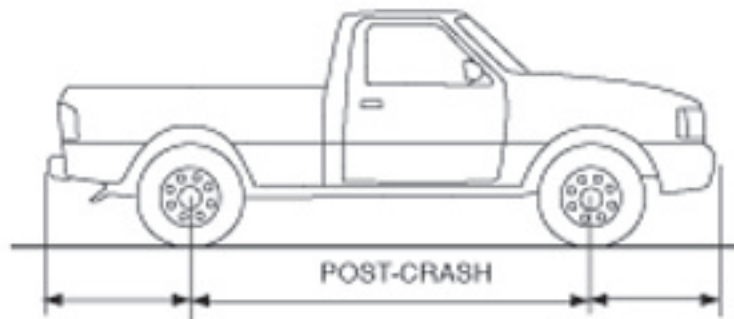


Original  
 Bumper Height



Bumper corner  
 Stringline

Bumper corner  
 Stringline



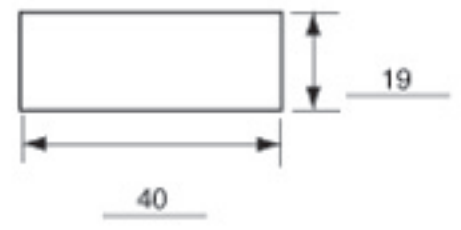
Bumper corner  
 Stringline

Bumper corner  
 Stringline



**Passenger Airbag Door**

Single Door



Vents:  Y  N  
 if yes, how many: 2  
 @ 2 and 10 o'clock

Tethers:  Y  N  
 if yes, how many: 1



















66101  
260P71  
DJM  
T9

**MADE IN AMERICA**

Serial # 22

100% POLYESTER

























TOP  
#



















PUSH TO  
RELEASE





















40/22  
179026  
ALL  
PT

CHEVROLET





179006  
All  
body  
work

VENTURE

6



VENTURE

CHEVROLET











P&F  
DSZR  
10/1  
FINT

VENTURE

588-000  
80 7538 88



P2F  
022R  
031  
LINT

10/22  
179026  
ALL  
PT

VENTURE





6

179026  
All  
TASSA  
HYDRA

P









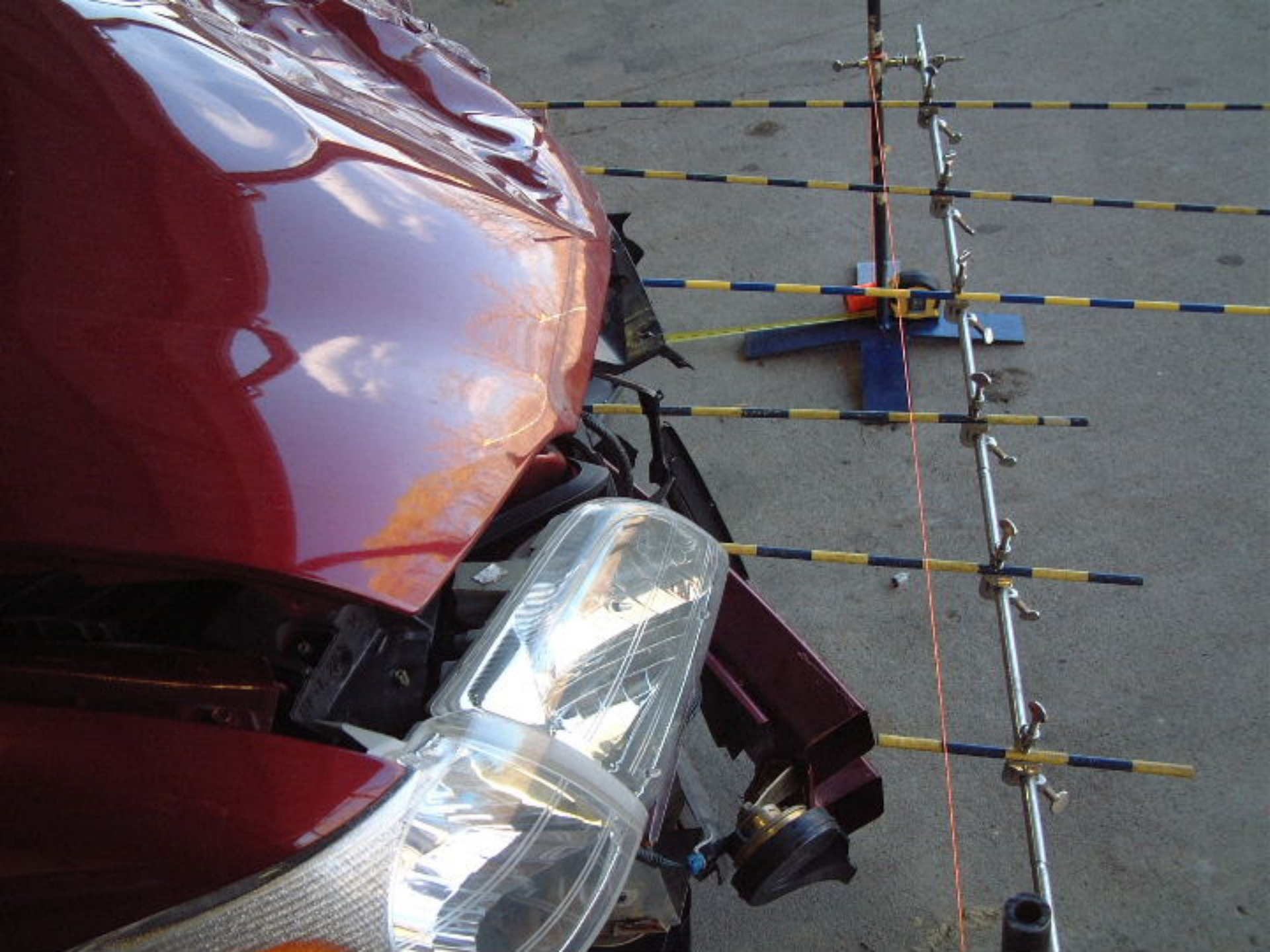




1/20/20  
1/21/20  
1/22/20

(P)

6





















STOP













TRW 2760 STD



