

Case 432 : Narrative

Case Vehicle (A): 2004 Jeep	Vehicle (B): 1997 Ford
Type: Liberty Sport, 4x4, 4-door SUV	Type: Taurus GL, 4-door sedan
Driver: 36-year-old female	Driver: 79-year-old female
CDC: 12-FYEW-1	CDC: 01-FDEW-3

SITUATION

[1](#) [2](#) [3](#) [4](#) It was daylight, the sky was clear, and the road surface was dry and free of defects, as case vehicle (A) was traveling south at a driver-estimated speed of 40 mph (64 kph) in the inside, southbound lane of a six-lane north-south asphalt road with a posted speed limit of 55 mph (89 kph). [5](#) [6](#) [7](#) Vehicle (B) was traveling north at an unknown speed in the inside northbound lane of the same north-south road. [8](#) [9](#) As both vehicles approached a traffic-signal-controlled four-leg intersection with an east-west road, vehicle (B) entered the left-turn lane and the driver started to make a left turn to travel west on the east-west road. As vehicle (B) crossed the path of case vehicle (A), [10](#) the driver of case vehicle (A) applied the brakes but the left front of case vehicle (A) struck the front of vehicle (B). Both vehicles were towed due to damage.

The police accident report indicates B-level injuries for the driver of case vehicle (A) and A-level injuries for the driver of vehicle (B). Both drivers were transported by ambulance to a local hospital. The driver of case vehicle (A) was treated and released and the driver of vehicle (B) was admitted for further treatment.

GENERAL VEHICLE DAMAGE AND ESTIMATED CRASH SEVERITIES

[11](#) Damage to the front of case vehicle (A) was moderate, with the majority of the damage to the left and center sections. Direct damage began at the left-front bumper corner and extended 102-cm to the right, resulting in a 62-percent vehicle overlap (%VOL). [12](#) The maximum rearward crush was 26 cm and it occurred at the left-front bumper corner.

[13](#) [14](#) Damage to the front of vehicle (B) was moderate. Direct damage began at the left-front bumper corner and extended 148-cm across the entire front. [15](#) The maximum rearward crush was 56 cm and it occurred 51-cm to the right of the left-front bumper corner. There was a 12-cm decrease in the left wheelbase and a 4-cm increase in the right wheelbase.

Using the WinSMASH crash-reconstruction program and [12](#) [16](#) [17](#) [18](#) [19](#) crush profiles measured for the front of case vehicle (A) and [15](#) [20](#) [21](#) [22](#) [23](#) the front of vehicle (B), the following impact severities were estimated for the frontal impact:

		Estimated Velocity Change - kph (mph)		
Vehicle	Variable	Total	Longitudinal	Latitudinal
Case Vehicle (A)	delta V	32 (20)	-31 (-19)	6 (3)

DESCRIPTION OF DAMAGE TO CASE VEHICLE (A)

Exterior

[24](#) In the front, the primary damage was to the left and center sections. [24](#) [25](#) [26](#) The bumper cover and the grille were damaged and completely separated from their attachments, and the bumper support and left side of the radiator were displaced rearward. Both headlight assemblies were completely separated from their attachments. The hood was slightly elevated on the left side and bent down at the left-front corner. [27](#) The hood latch was bent but it was not jammed, there was no damage to the hood hinges, and [28](#) there was no damage to the windshield.

On the left side, [29](#) the fender was damaged and completely separated from its attachments, [30](#) [31](#) the left-front wheel was displaced out at the bottom and pushed rearward, resulting in a 10-cm decrease in the left wheelbase, but the left-front tire was intact. [32](#) The fender support was slightly buckled behind the left-front wheel. [33](#) The exterior of the driver door was scraped and slightly buckled at the bottom behind the fender support, and [34](#) the door window frame was displaced slightly to the left. Both left-side doors were operational and [34](#) [35](#) [36](#) there was no other damage to the left side of the vehicle.

[37](#) In the rear, an externally mounted spare-tire rim was bent but this damage is not related to this crash. [38](#) [39](#) [40](#) On the right side, there was no damage but the right wheelbase was decreased by 4 cm.

Interior

[41](#) This vehicle was equipped with steering-wheel and dash-mounted frontal-impact airbags but only the steering-wheel airbag deployed during the frontal impact with vehicle (B), since this vehicle was equipped with a dash-mounted airbag cutoff sensor that is activated by passenger weight and there was no occupant in the right-front seat. [42](#) [43](#) In the driver area, there was no damage to the steering-wheel airbag or to the module cover, but there were marks on the fabric from an unknown source. [44](#) [45](#) The steering-wheel rim was slightly deformed at the top but there was no damage to the spokes or to the hub, and there was no rotation of the steering column. [46](#) [47](#) [48](#) [49](#) There was a small scrape at the base of the upper section of the A-pillar, a small scrape at the lower-left section of the knee bolster, and a scuffmark on the knee bolster under the steering column. The toepan was displaced rearward about 7 cm [49](#) [50](#) [51](#) [52](#) but there was no other damage in the driver area.

[53](#) There was no damage to the center-front area of the vehicle. [54](#) [55](#) [56](#) There was also no damage in the right-front seating area, or in the [57](#) [58](#) rear-seating area.

OCCUPANT KINEMATICS AND INJURIES

[59](#) The 168-cm, 113-kg (5-ft 6-in, 250-lb) 36-year-old female driver was using the three-point-belt with a pretensioner and the steering-wheel airbag and belt pretensioner deployed. Belt use at the time of the crash is indicated by loading marks [60](#) on the D-ring and [61](#) [62](#) on the continuous loop, and by the fact that the belt was locked in an extended mode.

On impact, the driver moved forward relative to the interior of the vehicle, into the three-point belt and the steering-wheel airbag. She sustained a contusion to the left shoulder from loading by the shoulder

belt and a contusion to the left side of the abdomen from loading by the lap belt. She sustained an abrasion to the left knee due to contact with the knee bolster and contusions to the posterior aspects of both knees, probably from contact with the seat cushion. She also sustained a contusion to the right shin from an unknown source.

The following table and [63](#) attached drawing summarize the injuries sustained by the belted driver of case vehicle (A).

Occupant: Driver	Age: 36 years	Gender: Female		
Restraints: 3-point belt with pretensioner; steering-wheel airbag	Stature: 168 cm (5 ft, 6 in)	Mass: 113 kg (250 lb)		
Injury Description	A.I.S.	Injury Source		
		Definite	Probable	Possible
—	—	—	—	—
Contusion, left shoulder	1	Shoulder belt	—	—
Contusion, left side of abdomen	1	Lap belt	—	—
Abrasion, left knee	1	Knee bolster	—	—
Contusion, posterior aspect of left knee	1	—	Seat cushion	—
Contusion, posterior aspect of right knee	1	—	Seat cushion	—
Contusion, right shin	1	Unknown	—	—
Maximum A.I.S. Level	1	—	—	—
Injury Severity Score	1	—	—	—

CASE NO.: 432

CASE VEHICLE: 2004 Jeep

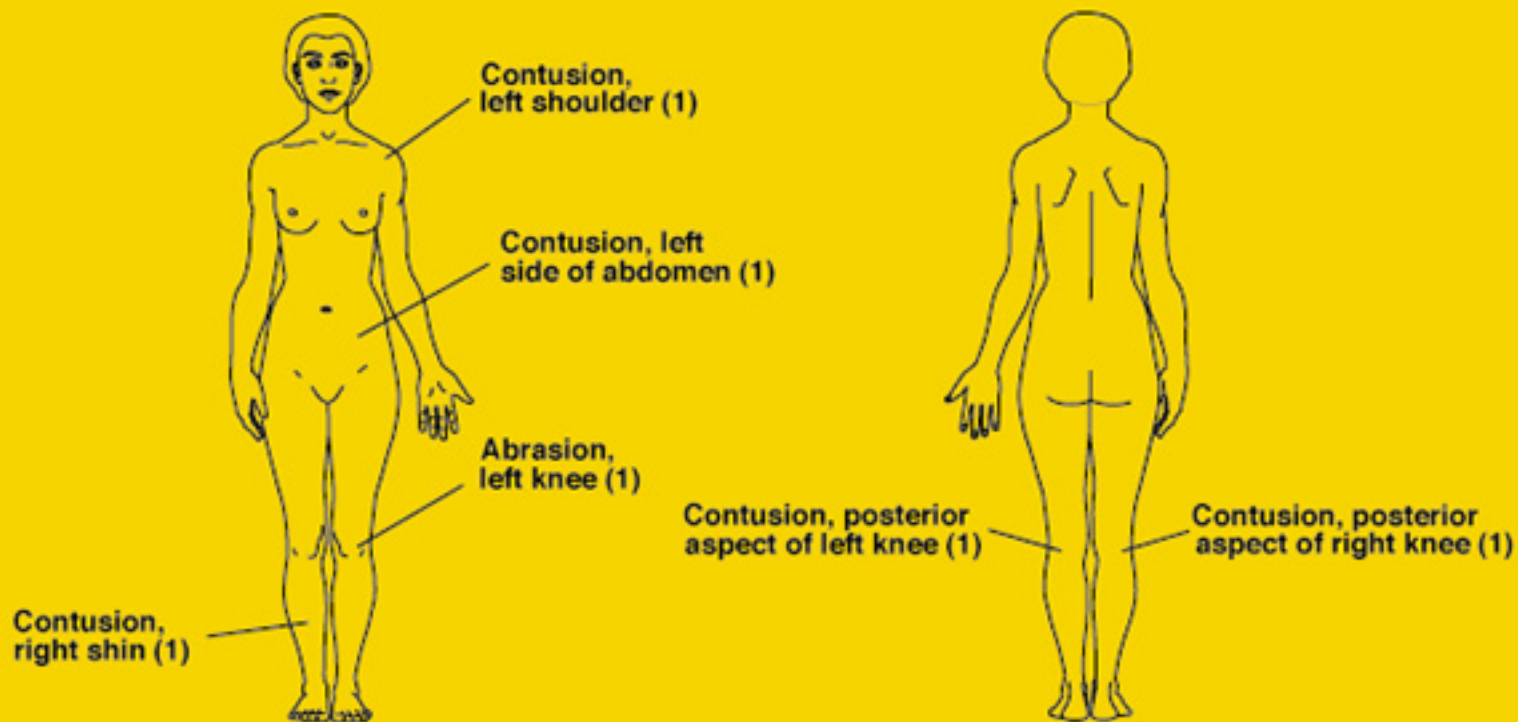
TYPE: Liberty Sport, 4x4, 4-door SUV

OCCUPANT: (Driver) 36-year-old female

STATURE: 168 cm (5 ft, 6 in) MASS: 113 kg (250 lb)

RESTRAINTS: 3-point belt with pretensioner;
steering-wheel airbag

SEVERITY: MAIS - 1 ISS -1



Case No.: 432

Case Vehicle (A): 2004 Jeep

Type: Liberty Sport, 4x4, 4-door SUV

Driver: 36-year-old female

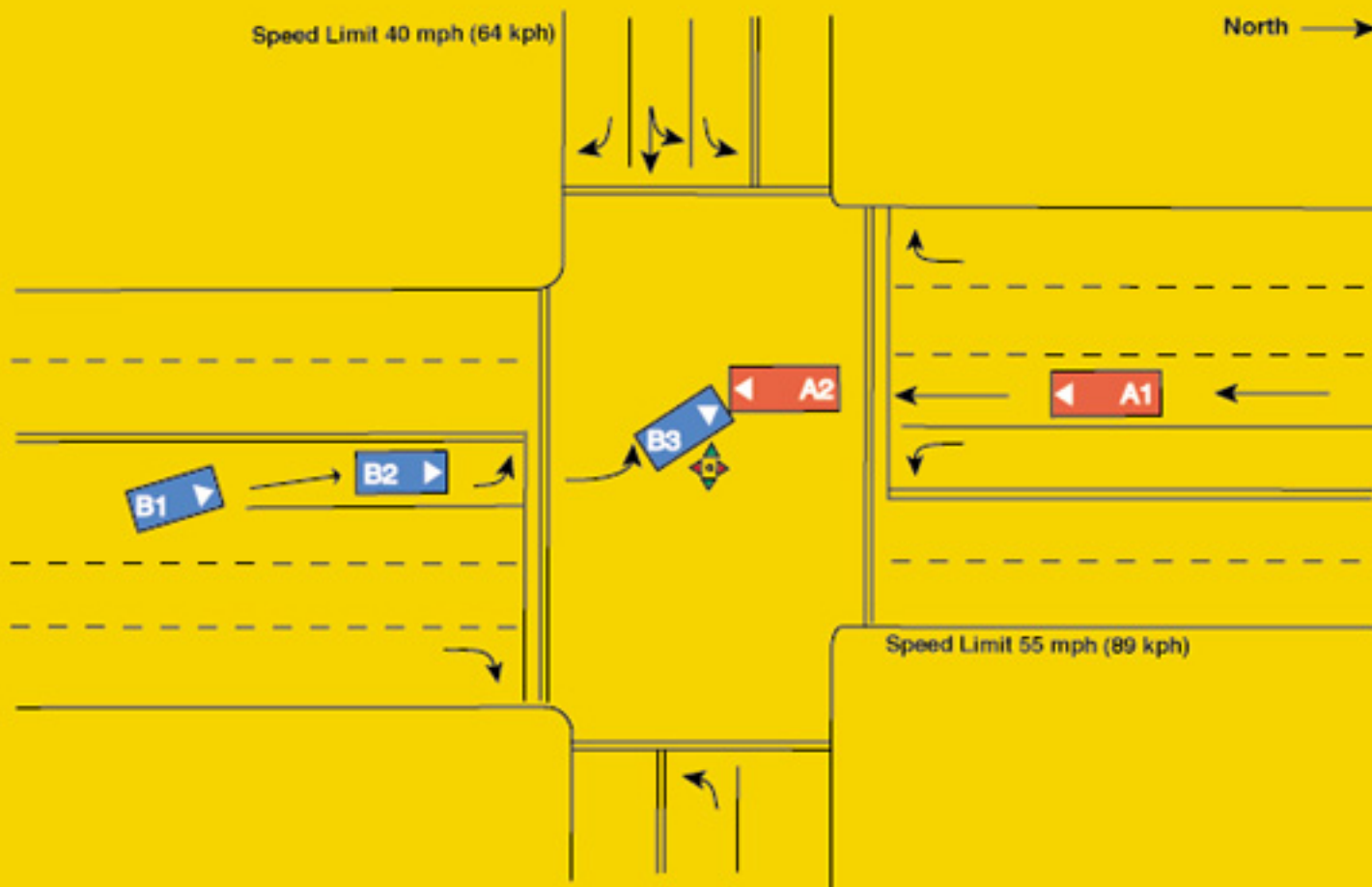
Vehicle (B): 1997 Ford Taurus GL, 4-door sedan

Light Conditions: Daylight

Weather: Clear

Road Surface: Dry

Road Construction: Asphalt



Vehicle Report

Click on Section Name to jump directly to that Section —

- [General Conditions](#)
- [Other Vehicle](#)
- [Case Vehicle General](#)
- [Case Vehicle Damage Description](#)
- [Crash Severity](#)
- [Case Vehicle Tires & Rims](#)
- [Case Vehicle Fuel, Tank, Fire](#)
- [Case Vehicle Exterior](#)
- [Case Vehicle Steering Column/Rim](#)
- [Case Vehicle Intrusion](#)
- [Case Vehicle Airbag\(s\)](#)
- [Case Vehicle Interior](#)
- [Case Vehicle Seats](#)

General Conditions

[Back to Top](#)

Variable Number and Name	Code Value	Code Description	Other Options
V206 — Urban/Rural Area	1	Urban	more
V207 — Limited Access Highway	0	No	more
V208 — Road Total Lanes	4	4 lanes or more	more
V209 — Intersecting Road Total Lanes	4	4 lanes or more	more
V210 — Road Surface Type	1	Asphalt	more
V211 — Road Defects	0	No	more
V212 — Construction Zone	0	No	more
V213 — Road Alignment Vertical Plane	1	Level	more
V214 — Road Alignment Horizontal Plane	1	Straight	more
V215 — Surface Covering	10	Dry	more
V216 — Visibility Limitation	0	None	more
V217 — Visibility Obstruction	0	None	more
V218 — Speed Limit	6	86-90 km/h .. 55 mph	more
V219 — Precipitation Type	0	None	more
V220 — Precipitation Rate	8	Not applicable	more
V221 — Temperature	6	16 to 25 C .. 60 to 77 F	more

V222 — Crosswind	9	Unknown	more
V223 — Light Conditions	1	Daylight	more
V224 — Mechanical Malfunction Mention	0	No	more
V225 — Case Vehicle and Object	0	No	more
V226 — Case Vehicle Rollover	0	No	more
V227 — Case Vehicle Ran Off Roadway	0	No	more
V228 — Moving Case Vehicle/Contacted Moving Vehicle	1	Yes	more
V229 — Case Vehicle/Contacted Stopped Vehicle	0	No	more
V230 — Stopped Case Vehicle/Contactd Vehicle	0	No	more
V231 — Total Vehicles Hit By Case Vehicle	1	1 vehicle	more
V232 — Any Fire in Crash	0	No	more
V233 — Max Police Severity-PAR	3	A - Incapacitating Injury	more
V234 — Driver Alcohol Involvement	0	Had not been drinking	more
V235 — Driver Alcohol BAC	80	Not tested	more
V236 — Driver Impairment Mention	0	No	more
V237 — Driven/Towed From Scene	2	Towed Due to Damage	more

Other Vehicle

[Back to Top](#)

Variable Number and Name	Code Value	Code Description	Other Options
V301 — Other Vehicle VIN	1FALP52U3VG1	—	—
V302 — Other Vehicle Manufacturer/Body Code	12128	—	—
V303 — Other Vehicle Manufacturer	121	Ford	more
V304 — Other Vehicle Body Code	28	Intermediate 105-109.9 in. wb.	more
V305 — Other Vehicle Make/Model	0275	Taurus	more
V306 — Other Vehicle Model Year	1997	—	—
V307 — Other Vehicle Mass	001497 kg	—	—
V308 — Other Vehicle Number	0	No separate report	more
V309 — Other Vehicle Number of Occupants	01	—	—
V310 — Other Vehicle Traveling Speed	999	Unknown	more

V311 — Highest Police Injury Severity	3	A - Incapacitating Injury	more
V312 — Other Vehicle Type	28	Intermediate 105-109.9 in. wb.	more
V313 — Other Vehicle Wheelbase (cm)	276 cm	—	—
V314 — Average Track Width	156 cm	—	—
V315 — Overall Length	502 cm	—	—
V316 — Overall Width (OAW)	185 cm	—	—
V317 — Front Overhang (FOH)	106 cm	—	—
V318 — Rear Overhang (ROH)	120 cm	—	—
V319 — Undeformed End Width (UEW)	148 cm	—	—
V320 — Engine Displacement	3.0 l	—	—
V321 — Engine: Number of Cylinders	06	—	—
V322 — Direct Damage Length (DDL)	148 cm	—	—
V323 — Front-End Overlap % (FEO)	98	98% or more	more
V324 — Vehicle Overlap % (VOL)	98	98% or more	more

Case Vehicle General

[Back to Top](#)

Variable Number and Name	Code Value	Code Description	Other Options
V401 — VIN	1J4GL48K14W1	—	—
V402 — Manufacturer/Body Code	15227	—	—
V403 — Vehicle Manufacturer	152	Kaiser/Jeep	more
V404 — Vehicle Body Code	27	—	—
V405 — Make/Model Code	3422	—	—
V406 — Model Year	2004	—	—
V407 — Vehicle Mass	001735 kg	—	—
V408 — Odometer Reading	001551 miles	—	—
V409 — Number of Occupants	01	—	—
V410 — Traveling Speed	064 kph	—	—
V411 — Body Type	21	Small utility (e.g. Jeep, Scout, Bronco)	more
V412 — Stolen Vehicle	8	Not currently collected	more
V413 — Body Structure	2	Unitized	more
V414 — Transmission Type	1	Automatic	more

V415 — Transmission Lever Location	2	Console	more
V416 — Steering	1	Power	more
V417 — Brakes	1	Power	more
V418 — Brake Type	3	Disc - all wheels	more
V419 — Brake Anti-lock Device	1	Two-wheel	more
V420 — Air Conditioning in Vehicle	8	Not currently collected	more
V421 — Drive Type	3	Four wheel	more
V422 — Dual Rear Wheels	0	No	more
V423 — Original Restraint System Type	3	Airbag	more
V424 — Equipped With Roll Bar	0	No	more
V425 — Roof Type	1	Solid	more
V426 — Wheelbase	265 cm	—	—
V427 — Anti-lacerative Glass	0	None	more
V428 — Average Track Width	153 cm	—	—
V429 — Overall Length	422 cm	—	—
V430 — Overall Width (OAW)	182 cm	—	—
V431 — Front Overhang	075 cm	—	—
V432 — Rear Overhang	082 cm	—	—
V433 — Undeformed End Width (UEW)	160 cm	—	—
V434 — Engine Displacement	3.7 l	—	—
V435 — Engine: Number of Cylinders	06	—	—
V436 — Direct Damage Length (DDL)	102 cm	—	—
V437 — Front End Overlap % (FEO)	64	—	—
V438 — Vehicle Overlap % (VOL)	62	—	—

Case Vehicle

Damage Description

[Back to Top](#)

Variable Number and Name	Code Value	Code Description	Other Options
V501 — Maximum Crush - Front	026 cm	—	—
V502 — Maximum Crush - Right Side	000 cm	No crush (or less than 1 cm.)	more
V503 — Maximum Crush - Rear	000 cm	No crush (or less than 1 cm.)	more
V504 — Maximum Crush - Left Side	000 cm	No crush (or less than 1 cm.)	more

V505 — Maximum Crush - Roof	000 cm	No crush (or less than 1 cm.)	more
V506 — Maximum Crush - Other	000 cm	No crush (or less than 1 cm.)	more
V507 — Are Events In Chronological Order	1	Yes	more
V508 — Event 1 Impact Location	1	On Roadway	more
V509 — Event 1 Impact Configuration	11	FRONT of case veh - FRONT of contacted Vehicle	more
V510 — Event 1 Object/Vehicle Contacted	28	Intermediate 105-109.9 in. wb.	more
V511 — Event 2 Impact Location	8	No 2nd event	more
V512 — Event 2 Impact Configuration	88	No 2nd event	more
V513 — Event 2 Object/Vehicle Contacted	00	No object/vehicle contacted	more
V514 — Event 3 Impact Location	8	No 3rd event	more
V515 — Event 3 Impact Configuration	88	No 3rd event	more
V516 — Event 3 Object/Vehicle Contacted	00	No object/vehicle contacted	more
V517 — Event 4 Impact Location	8	No 4th event	more
V518 — Event 4 Impact Configuration	88	No 4th event	more
V519 — Event 4 Object/Vehicle Contacted	00	No object/vehicle contacted	more
V520 — Event 5 Impact Location	8	No 5th event	more
V521 — Event 5 Impact Configuration	88	No 5th event	more
V522 — Event 5 Object/Vehicle Contacted	00	No object/vehicle contacted	more
V523 — Event 6 Impact Location	8	No 6th event	more
V524 — Event 6 Impact Configuration	88	No 6th event	more
V525 — Event 6 Object/Vehicle Contacted	00	No object/vehicle contacted	more
V526 — Event 7 Impact On Road	8	No 7th event	more
V527 — Event 7 Impact Configuration	88	No 7th event	more
V528 — Event 7 Object/Vehicle Contacted	00	No object/vehicle contacted	more
V529 — Primary CDC Case Vehicle -event Number	1	Event 1	more
V530 — Primary CDC Case Vehicle	999		

- impact speed		Unknown	more
V531 — Primary CDC Case Vehicle - Estimated By	1	Investigator	more
V532 — Primary CDC Case Vehicle -crush	026	—	—
V533 — Primary CDC Case Vehicle -clock #1	12	12 o'clock	more
V534 — Primary CDC Case Vehicle letter 1 #1	06	F - Front	more
V535 — Primary CDC Case Vehicle letter 2 #1	25	Y - Side or end (F + P or L + C)	more
V536 — Primary CDC Case Vehicle letter 3 #1	05	E - Everything below belt line	more
V537 — Primary CDC Case Vehicle letter 4 #1	23	W - Wide impact area	more
V538 — Primary CDC Case Vehicle Extent #1	01	Extent 1	more
V539 — Primary CDC Case Vehicle -CDC #1	12FYEW1	—	—
V541 — Primary CDC Case Vehicle letter 1 #2	00	Missing Data/Not applicable	more
V542 — Primary CDC Case Vehicle letter 2 #2	00	Missing Data/Not applicable	more
V543 — Primary CDC Case Vehicle letter 3 #2	00	Missing Data/Not applicable	more
V544 — Primary CDC Case Vehicle letter 4 #2	00	Missing Data/Not applicable	more
V545 — Primary CDC Case Vehicle Extent #2	00	Missing Data/Not applicable	more
V546 — Primary CDC Case Vehicle -CDC #2	9800000	—	—
V547 — Primary CDC Contacted Vehicle - Impact Speed	999	Unknown	more
V548 — Primary CDC Contacted Vehicle - Estimated By	1	Investigator	more
V549 — Primary CDC Contacted Vehicle -crush	056	—	—
V550 — Primary CDC Contacted Vehicle -clock #1	01	1 o'clock	more
V551 — Primary CDC Contacted Vehicle letter 1 #1	06	F - Front	more
V552 — Primary CDC Contacted Vehicle letter 2 #1	04	D - Distributed (Side or End) or (F + P + B)	more

V553 — Primary CDC Contacted Vehicle letter 3 #1	05	E - Everything below belt line	more
V554 — Primary CDC Contacted Vehicle letter 4 #1	23	W - Wide impact area	more
V555 — Primary CDC Contacted Vehicle Extent #1	03	Extent 3	more
V556 — Primary CDC Contacted Vehicle -CDC #1	01FDEW3	—	—
V558 — Primary CDC Contacted Vehicle letter 1 #2	00	Missing Data/Not applicable	more
V559 — Primary CDC Contacted Vehicle letter 2 #2	00	Missing Data/Not applicable	more
V560 — Primary CDC Contacted Vehicle letter 3 #2	00	Missing Data/Not applicable	more
V561 — Primary CDC Contacted Vehicle letter 4 #2	00	Missing Data/Not applicable	more
V562 — Primary CDC Contacted Vehicle Extent #2	00	Missing Data/Not applicable	more
V563 — Primary CDC Contacted Vehicle -CDC #2	9800000	—	—
V564 — Secondary CDC Case Vehicle - Event No	8	Not applicable	more
V565 — Secondary CDC Case Vehicle - Impact Speed	998	Not Applicable	more
V566 — Secondary CDC Case Vehicle - Estimated By	8	Not applicable (no vehicle/no impact)	more
V567 — Secondary CDC Case Vehicle -crush	998	Not Applicable	more
V568 — Secondary CDC Case Vehicle -clock #1	98	Not Applicable	more
V569 — Secondary CDC Case Vehicle letter 1 #1	00	Missing Data/Not applicable	more
V570 — Secondary CDC Case Vehicle letter 2 #1	00	Missing Data/Not applicable	more
V571 — Secondary CDC Case Vehicle letter 3 #1	00	Missing Data/Not applicable	more
V572 — Secondary CDC Case Vehicle letter 4 #1	00	Missing Data/Not applicable	more
V573 — Secondary CDC Case Vehicle Extent #1	00	Missing Data/Not applicable	more
V574 — Secondary CDC Case Vehicle -CDC #1	9800000	—	—
V576 — Secondary CDC Case	00	Missing Data/Not applicable	more

Vehicle letter 1 #2			
V577 — Secondary CDC Case Vehicle letter 2 #2	00	Missing Data/Not applicable	more
V578 — Secondary CDC Case Vehicle letter 3 #2	00	Missing Data/Not applicable	more
V579 — Secondary CDC Case Vehicle letter 4 #2	00	Missing Data/Not applicable	more
V580 — Secondary CDC Case Vehicle Extent #2	00	Missing Data/Not applicable	more
V581 — Secondary CDC Case Vehicle -CDC #2	9800000	—	—
V582 — Secondary CDC Contacted Vehicle - Impact Speed	998	Not Applicable	more
V583 — Secondary CDC Contacted Vehicle - Estimated By	8	Not applicable (no vehicle/no impact)	more
V584 — Secondary CDC Contacted Vehicle -crush	998	Not Applicable	more
V585 — Secondary CDC Contacted Vehicle -clock #1	98	Not Applicable	more
V586 — Secondary CDC Contacted Vehicle letter 1 #1	00	Missing Data/Not applicable	more
V587 — Secondary CDC Contacted Vehicle letter 2 #1	00	Missing Data/Not applicable	more
V588 — Secondary CDC Contacted Vehicle letter 3 #1	00	Missing Data/Not applicable	more
V589 — Secondary CDC Contacted Vehicle letter 4 #1	00	Missing Data/Not applicable	more
V590 — Secondary CDC Contacted Vehicle Extent #1	00	Missing Data/Not applicable	more
V591 — Secondary CDC Contacted Vehicle -CDC #1	9800000	—	—
V593 — Secondary CDC Contacted Vehicle letter 1 #2	00	Missing Data/Not applicable	more
V594 — Secondary CDC Contacted Vehicle letter 2 #2	00	Missing Data/Not applicable	more
V595 — Secondary CDC Contacted Vehicle letter 3 #2	00	Missing Data/Not applicable	more
V596 — Secondary CDC Contacted Vehicle letter 4 #2	00	Missing Data/Not applicable	more
V597 — Secondary CDC Contacted Vehicle Extent #2	00	Missing Data/Not applicable	more
V598 — Secondary CDC Contacted Vehicle -CDC #2	9800000	—	—

Crash Severity

[Back to Top](#)

Variable Number and Name	Code Value	Code Description	Other Options
V601 — Case Vehicle Primary Impact Number	1	—	—
V602 — Primary Impact Total Delta-V	032 kph	—	—
V603 — Primary Case Vehicle Reconstructed Longitudinal Delta-V	-031 kph	—	—
V604 — Primary Case Vehicle Reconstructed Lateral Delta-V	0006 kph	—	—
V605 — Primary Case Vehicle Reconstructed Crush Energy	0038 kJ	—	—
V606 — Primary Impact Case Vehicle - reconstruction	22	Reconstructed, moderate confidence level	more
V607 — Primary Case Vehicle Reconstruction Mode	2	CDC & detailed damage	more
V608 — Primary Contacted Vehicle Reconstructed	039 kph	—	—

Total Delta-V			
V609 — Primary Contacted Vehicle Reconstructed Longitudinal Delta-V	-039 kph	—	—
V610 — Primary Contacted Vehicle Reconstructed Lateral Delta- V	-007 kph	—	—
V611 — Primary Contacted Vehicle Reconstructed Crush Energy	0130 kJ	—	—
V612 — Case Vehicle Secondary Impact Number	8	—	—
V613 — Secondary Case Vehicle Reconstructed Total Delta-V	888	N/A	more
V614 — Secondary Case Vehicle Reconstructed Longitudinal Delta-V	8888	—	—
V615 — Secondary Case Vehicle Reconstructed Lateral Delta- V	8888	—	—
V616 — Secondary Case Vehicle Reconstructed Crush Energy	8888	—	—

V617 — Secondary Case Vehicle Reconstruction Note	88	—	—
V618 — Secondary Case Vehicle Reconstruction Mode	8	Not applicable	more
V619 — Secondary Contacted Vehicle Reconstructed Total Delta-V	888	N/A	more
V620 — Secondary Contacted Vehicle Reconstructed Longitudinal Delta-V	8888	—	—
V621 — Secondary Contacted Vehicle Reconstructed Lateral Delta- V	8888	—	—
V622 — Secondary Contacted Vehicle Reconstructed Crush Energy	8888	—	—
V623 — Case Vehicle Primary Impact Number	1	—	—
V624 — Primary Case Vehicle Reconstructed Total EBS	032 kph	—	—
V625 — Primary Case	-031 kph		

Vehicle Reconstructed Longitudinal EBS			—	—
V626 — Primary Case Vehicle Reconstructed Lateral EBS	0006 kph		—	—
V627 — Primary Case Vehicle Reconstructed Crush Energy	0038 kJ		—	—
V628 — Primary Case Vehicle Reconstruction Note	22		Reconstructed, moderate confidence level	more
V629 — Primary Case Vehicle Reconstruction Mode	2		CDC & detailed damage	more
V630 — Primary Contacted Vehicle Reconstruction Total EBS	039 kph		—	—
V631 — Primary Contacted Vehicle Reconstruction Longitudinal EBS	-039 kph		—	—
V632 — Primary Contacted Vehicle Reconstruction Lateral EBS	-007 kph		—	—
V633 — Primary Contacted Vehicle Reconstruction	0130 kJ		—	—

Crush Energy			
V634 — Case Vehicle Secondary Impact Number	8	Not applicable	more
V635 — Secondary Case Vehicle Reconstruction Total EBS	888	N/A	more
V636 — Secondary Case Vehicle Reconstruction Longitudinal EBS	8888	—	—
V637 — Secondary Case Vehicle Reconstruction Lateral EBS	8888	—	—
V638 — Secondary Case Vehicle Reconstruction Crush Energy	8888	—	—
V639 — Secondary Case Vehicle Reconstruction Note	88	—	—
V640 — Secondary Case Vehicle Reconstruction Mode	8	Not applicable	more
V641 — Secondary Contacted Vehicle Reconstruction Total EBS	888	N/A	more
V642 — Secondary Contacted Vehicle	8888	—	—

Reconstruction Longitudinal EBS			
V643 — Secondary Contacted Vehicle Reconstruction Lateral EBS	8888	—	—
V644 — Secondary Contacted Vehicle Reconstruction Crush Energy	8888	—	—
V645 — Case Vehicle Reconstructed Impact Number	1	—	—
V646 — Case Vehicle Impact 1 Plane	1	Bumper	more
V647 — Case Vehicle Impact 1 Direct Damage Length [DDL]	102 cm	—	—
V648 — Case Vehicle Impact 1 Max Crush	026 cm	—	—
V649 — Case Vehicle Impact 1 Field-L	124 cm	—	—
V650 — Case Vehicle Impact 1 C1	026 cm	—	—
V651 — Case Vehicle Impact 1 C2	012 cm	—	—
V652 — Case Vehicle Impact 1 C3	016 cm	—	—
V653 — Case	011 cm		

Vehicle Impact 1 C4		—	—
V654 — Case Vehicle Impact 1 C5	007 cm	—	—
V655 — Case Vehicle Impact 1 C6	021 cm	—	—
V656 — Case Vehicle Impact 1 +/- D	-029 cm	—	—
V657 — Case Vehicle Reconstructed Impact Number	2	—	—
V658 — Case Vehicle Impact 2 Plane	8	Not applicable	more
V659 — Case Vehicle Impact 2 Direct Damage Length [DDL]	998	Not applicable	more
V660 — Case Vehicle Impact 2 Max Crush	998	Not applicable	more
V661 — Case Vehicle Impact 2 Field-L	998	Not applicable	more
V662 — Case Vehicle Impact 2 C1	998	Not applicable	more
V663 — Case Vehicle Impact 2 C2	998	Not applicable	more
V664 — Case Vehicle Impact 2 C3	998	Not applicable	more
V665 — Case Vehicle Impact 2 C4	998	Not applicable	more
V666 — Case	998		

Vehicle Impact 2 C5		Not applicable	more
V667 — Case Vehicle Impact 2 C6	998	Not applicable	more
V668 — Case Vehicle Impact 2 +/- D	9998	—	—
V669 — Other Vehicle Reconstructed Impact Number	1	—	—
V670 — Other Vehicle Impact 1 Plane	1	Bumper	more
V671 — Other Vehicle Impact 1 Direct Damage Length [DDL]	148 cm	—	—
V672 — Other Vehicle Impact 1 Max Crush	056 cm	—	—
V673 — Other Vehicle Impact 1 Field-L	127 cm	—	—
V674 — Other Vehicle Impact 1 C1	025 cm	—	—
V675 — Other Vehicle Impact 1 C2	037 cm	—	—
V676 — Other Vehicle Impact 1 C3	056 cm	—	—
V677 — Other Vehicle Impact 1 C4	052 cm	—	—
V678 — Other Vehicle Impact 1 C5	045 cm	—	—
V679 — Other	025 cm		

Vehicle Impact 1 C6		—	—
V680 — Other Vehicle Impact 1 +/- D	-010 cm	—	—
V681 — Other Vehicle Reconstructed Impact Number	2	—	—
V682 — Other Vehicle Impact 2 Plane	8	Not applicable	more
V683 — Other Vehicle Impact 2 Direct Damage Length [DDL]	998	Not applicable	more
V684 — Other Vehicle Impact 2 Max Crush	998	Not applicable	more
V685 — Other Vehicle Impact 2 Field-L	998	Not applicable	more
V686 — Other Vehicle Impact 2 C1	998	Not applicable	more
V687 — Other Vehicle Impact 2 C2	998	Not applicable	more
V688 — Other Vehicle Impact 2 C3	998	Not applicable	more
V689 — Other Vehicle Impact 2 C4	998	Not applicable	more
V690 — Other Vehicle Impact 2 C5	998	Not applicable	more
V691 — Other Vehicle Impact 2 C6	998	Not applicable	more
V692 — Other	9998		

Vehicle Impact 2 +/- D		—	—
---------------------------	--	---	---

Case Vehicle Tires & Rims

[Back to Top](#)

Variable Number and Name	Code Value	Code Description	Other Options
V701 — Left Front Wheel Damaged	1	Yes	more
V702 — Right Front Wheel Damaged	0	No	more
V703 — Right Rear Wheel Damaged	0	No	more
V704 — Left Rear Wheel Damaged	0	No	more
V705 — Left Front Tire Tread Type	4	All Weather	more
V706 — Right Front Tire Tread Type	4	All Weather	more
V707 — Right Rear Tire Tread Type	4	All Weather	more
V708 — Left Rear Tire Tread Type	4	All Weather	more
V709 — Left Front Carcass Construction	3	Radial	more
V710 — Right Front Carcass Construction	3	Radial	more
V711 — Right Rear Carcass Construction	3	Radial	more
V712 — Left Rear Carcass Construction	3	Radial	more
V717 — Left Front Tire Size	P23570R16	—	—
V718 — Right Front Tire Size	P23570R16	—	—
V719 — Right Rear Tire Size	P23570R16	—	—
V720 — Left Rear Tire Size	P23570R16	—	—

Case Vehicle Fuel, Tank, Fire

[Back to Top](#)

Variable Number and Name	Code Value	Code Description	Other Options
V801 — Propulsive Fuel Type	1	Gasoline	more
V802 — Main Tank Location	122	Within frame/centered laterally - within vertically	more



V803 — Main Filler Cap Location	113	Left of frame laterally - above vertically	more
V804 — Main Tank Material	3	Plastic	more
V805 — Aux Tank Type	8	Not applicable (not equipped)	more
V806 — Aux Tank Location	888	Not applicable (not equipped)	more
V807 — Aux Filler Cap Location	888	Not applicable (not equipped)	more
V808 — Aux Tank Material	8	Not applicable	more
V901 — Fuel Leakage From Crash	0	No	more
V1001 — Fire In Or On Case Vehicle	0	No	more

Case Vehicle Exterior

[Back to Top](#)

Variable Number and Name	Code Value	Code Description	Other Options
V1101 — Hood Latch Released	0	No	more
V1102 — Hood Latch Damaged	1	Yes	more
V1103 — Hood Latch Jammed	0	No	more
V1104 — Left Hood Hinge Damaged	0	No	more
V1105 — Left Hood Hinge Separated	8	Not applicable	more
V1106 — Right Hood Hinge Damaged	0	No	more
V1107 — Right Hood Hinge Separated	8	Not applicable	more
V1108 — Hood Remained On Vehicle	1	Yes	more
V1109 — Rear Hood Edge Elevated	1	Yes	more
V1110 — Edge Contacted Windshield	0	No	more
V1111 — Edge Penetrated Windshield	8	Not applicable	more
V1112 — Hood Latch Location	1	Front of Vehicle	more
V1113 — Eng/Transmissn Mount Separation	0	No	more
V1114 — Steerng Column Flex Coupling	9	Unknown if equipped	more
V1115 — Steerng Column Coupling Damaged	9	Unknown	more
V1116 — Steerng Column Coupling Separated	9	Unknown	more
V1117 — Eng Comp Telescopng Unit	88	Not collected	more
V1118 — Comp Orig/Telescopd Diff	888	Not collected	more
V1119 — Left Side Body Mount Separation	8	Not applicable (unitized)	more

V1120 — Upper Left A-pillar Separation	0	No	more
V1121 — Lower Left A-pillar Separation	0	No	more
V1122 — Upper Left B-pillar Separation	0	No	more
V1123 — Lower Left B-pillar Separation	0	No	more
V1124 — Upper Left C-pillar Separation	0	No	more
V1125 — Lower Left C-pillar Separation	0	No	more
V1126 — Upper Left D-pillar Separation	0	No	more
V1127 — Lower Left D-pillar Separation	0	No	more
V1128 — Left Front Door Opening Cause	0	Door did not open	more
V1129 — Left Rear Door Opening Cause	0	Door did not open	more
V1130 — Left Front Door Jammed Closed	0	No	more
V1131 — Left Rear Door Jammed Closed	0	No	more
V1132 — Rear Door Type	5	Single door	more
V1133 — Rear Door Opening Cause	0	Door did not open	more
V1134 — Rear Door Jammed Closed	0	No	more
V1135 — Luggage Partition Damagd	8	Not applicable	more
V1136 — Spare Tire Status	8	Not collected	more
V1137 — Trailer Hitch Type	0	No hitch	more
V1138 — Trailer Type	0	No trailer	more
V1139 — Right Side Body Mount Separation	8	Not applicable (unitized)	more
V1140 — Upper Right A-pillar Separation	0	No	more
V1141 — Lower Right A-pillar Separation	0	No	more
V1142 — Upper Right B-pillar Separation	0	No	more
V1143 — Lower Right B-pillar Separation	0	No	more
V1144 — Upper Right C-pillar	0	No	more

Separation			
V1145 — Lower Right C-pillar Separation	0	No	more
V1146 — Upper Right D-pillar Separation	0	No	more
V1147 — Lower Right D-pillar Separation	0	No	more
V1148 — Right Front Door Opening Cause	00	Door did not open	more
V1149 — Right Rear Door Opening Cause	00	Door did not open	more
V1150 — Right Front Door Jammed Closed	0	No	more
V1151 — Right Rear Door Jammed Closed	0	No	more
V1152 — Van Rear Door Type	8	Not applicable (not a van)	more
V1153 — Windshield Cracked		No	more
V1154 — Windshield Broken	8	Not applicable	more
V1155 — Windshield Cracked or Broken by Occupant	8	Not applicable	more
V1156 — Bond Separation Extent	0	None	more
V1157 — Windshield Code		—	—
V1158 — Did Sun/T Roof Open	8	Not Applicable	more

**Case Vehicle
Steering
Column/Rim**

[Back to Top](#)

Variable Number and Name	Code Value	Code Description	Other Options
V1201 — Steering Wheel Rim Damage	1	Deformed slightly	more
V1202 — Number of Steering Wheel Spokes	4	4 spokes	more

V1203 — Steering Wheel Spoke Damage	0	None	more
V1204 — Column Tilt Feature	2	Up	more
V1205 — Column Swing-away Feature	0	Not equipped	more
V1206 — Column Telescoping Feature	0	Not equipped	more
V1207 — Wheel Energy Absorb Device	8	Not collected	more
V1208 — Wheel Ea Orig/Damaged Diff	888	Not collected	more
V1209 — Column Energy Absorb Device	88	Not collected	more
V1210 — Column Ea Orig/Comprss Diff	888	Not collected	more
V1211 — Shear Capsule Separation	888	Not collected	more
V1212 — Column Vertical Rotation	0	No apparent rotation	more
V1213 — Column Lateral Rotation	0	No apparent rotation	more
V1214 — Steering Wheel Hub Damage	0	None	more

Case Vehicle Intrusion



Click for intrusion figures

[Back to Top](#)

Variable Number and Name	Code Value	Code Description	Other Options
V1301 — Occupant Compartment Intrusion	1	Yes	more
V1302 — Was Intrusion Catastrophic	0	No	more
V1303 — Intrusion Number 01	01	Intrusion #1	more
V1304 — Intrusion 01 Occupant Space Number	11	First row, Left seat	more
V1305 — Intrusion 01 Intruding Object	03	Toe pan	more
V1306 — Intrusion 01 Assoc Event Number	1	Event #1	more
V1307 — Intrusion 01 Max Intrusion X-axis	07 cm	—	—
V1308 — Intrusion 01 Max Intrusion Y-axis	00 cm	0 cm or No Intrusion	more
V1309 — Intrusion 01 Max Intrusion Z-axis	00 cm	0 cm or No Intrusion	more

V1310 — Intrusion 01 Occupant Number	00	No contact or no intrusion	more
V1311 — Intrusion 01 Injury Number	00	No injury or no intrusion	more
V1312 — Intrusion 01 Occupant Number	00	No contact or no intrusion	more
V1313 — Intrusion 01 Injury Number	00	No injury or no intrusion	more
V1314 — Intrusion Number 02	00	No Intrusion, None	more
V1315 — Intrusion 02 Occupant Space Number	00	No Intrusion, None	more
V1316 — Intrusion 02 Intruding Object	00	No Intrusion, None	more
V1317 — Intrusion 02 Assoc Event Number	0	No Intrusion, None	more
V1318 — Intrusion 02 Max Intrusion X-axis	00 cm	0 cm or No Intrusion	more
V1319 — Intrusion 02 Max Intrusion Y-axis	00 cm	0 cm or No Intrusion	more
V1320 — Intrusion 02 Max Intrusion Z-axis	00 cm	0 cm or No Intrusion	more
V1321 — Intrusion 02 Occupant Number	00	No contact or no intrusion	more
V1322 — Intrusion 02 Injury Number	00	No injury or no intrusion	more
V1323 — Intrusion 02 Occupant Number	00	No contact or no intrusion	more
V1324 — Intrusion 02 Injury Number	99	Contact, injury unknown or data not collected	more
V1325 — Intrusion Number 03	00	No Intrusion, None	more
V1326 — Intrusion 03 Occupant Space Number	00	No Intrusion, None	more
V1327 — Intrusion 03 Intruding Object	00	No Intrusion, None	more
V1328 — Intrusion 03 Assoc Event Number	0	No Intrusion, None	more
V1329 — Intrusion 03 Max Intrusion X-axis	00 cm	0 cm or No Intrusion	more
V1330 — Intrusion 03 Max Intrusion Y-axis	00 cm	0 cm or No Intrusion	more
V1331 — Intrusion 03 Max Intrusion Z-axis	00 cm	0 cm or No Intrusion	more
V1332 — Intrusion 03 Occupant Number	00	No contact or no intrusion	more
V1333 — Intrusion 03 Injury Number	00	No injury or no intrusion	more

V1334 — Intrusion 03 Occupant Number	00	No contact or no intrusion	more
V1335 — Intrusion 03 Injury Number	99	Contact, injury unknown or data not collected	more
V1336 — Intrusion Number 04	00	No Intrusion, None	more
V1337 — Intrusion 04 Occupant Space Number	00	No Intrusion, None	more
V1338 — Intrusion 04 Intruding Object	00	No Intrusion, None	more
V1339 — Intrusion 04 Assoc Event Number	0	No Intrusion, None	more
V1340 — Intrusion 04 Max Intrusion X-axis	00 cm	0 cm or No Intrusion	more
V1341 — Intrusion 04 Max Intrusion Y-axis	00 cm	0 cm or No Intrusion	more
V1342 — Intrusion 04 Max Intrusion Z-axis	00 cm	0 cm or No Intrusion	more
V1343 — Intrusion 04 Occupant Number	00	No contact or no intrusion	more
V1344 — Intrusion 04 Injury Number	00	No injury or no intrusion	more
V1345 — Intrusion 04 Occupant Number	00	No contact or no intrusion	more
V1346 — Intrusion 04 Injury Number	99	Contact, injury unknown or data not collected	more
V1347 — Intrusion Number 05	00	No Intrusion, None	more
V1348 — Intrusion 05 Occupant Space Number	00	No Intrusion, None	more
V1349 — Intrusion 05 Intruding Object	00	No Intrusion, None	more
V1350 — Intrusion 05 Assoc Event Number	0	No Intrusion, None	more
V1351 — Intrusion 05 Max Intrusion X-axis	00 cm	0 cm or No Intrusion	more
V1352 — Intrusion 05 Max Intrusion Y-axis	00 cm	0 cm or No Intrusion	more
V1353 — Intrusion 05 Max Intrusion Z-axis	00 cm	0 cm or No Intrusion	more
V1354 — Intrusion 05 Occupant Number	00	No contact or no intrusion	more
V1355 — Intrusion 05 Injury Number	00	No injury or no intrusion	more
V1356 — Intrusion 05 Occupant Number	00	No contact or no intrusion	more
	99	Contact, injury unknown or data	

V1357 — Intrusion 05 Injury Number		not collected	more
V1358 — Intrusion Number 06	00	No Intrusion, None	more
V1359 — Intrusion 06 Occupant Space Number	00	No Intrusion, None	more
V1360 — Intrusion 06 Intruding Object	00	No Intrusion, None	more
V1361 — Intrusion 06 Assoc Event Number	0	No Intrusion, None	more
V1362 — Intrusion 06 Max Intrusion X-axis	00 cm	0 cm or No Intrusion	more
V1363 — Intrusion 06 Max Intrusion Y-axis	00 cm	0 cm or No Intrusion	more
V1364 — Intrusion 06 Max Intrusion Z-axis	00 cm	0 cm or No Intrusion	more
V1365 — Intrusion 06 Occupant Number	00	No contact or no intrusion	more
V1366 — Intrusion 06 Injury Number	00	No injury or no intrusion	more
V1367 — Intrusion 06 Occupant Number	00	No contact or no intrusion	more
V1368 — Intrusion 06 Injury Number	99	Contact, injury unknown or data not collected	more
V1369 — Intrusion Number 07	00	No Intrusion, None	more
V1370 — Intrusion 07 Occupant Space Number	00	No Intrusion, None	more
V1371 — Intrusion 07 Intruding Object	00	No Intrusion, None	more
V1372 — Intrusion 07 Assoc Event Number	0	No Intrusion, None	more
V1373 — Intrusion 07 Max Intrusion X-axis	00 cm	0 cm or No Intrusion	more
V1374 — Intrusion 07 Max Intrusion Y-axis	00 cm	0 cm or No Intrusion	more
V1375 — Intrusion 07 Max Intrusion Z-axis	00 cm	0 cm or No Intrusion	more
V1376 — Intrusion 07 Occupant Number	00	No contact or no intrusion	more
V1377 — Intrusion 07 Injury Number	00	No injury or no intrusion	more
V1378 — Intrusion 07 Occupant Number	00	No contact or no intrusion	more
V1379 — Intrusion 07 Injury Number	99	Contact, injury unknown or data not collected	more
V1380 — Intrusion Number 08	00	No Intrusion, None	more

V1381 — Intrusion 08 Occupant Space Number	00	No Intrusion, None	more
V1382 — Intrusion 08 Intruding Object	00	No Intrusion, None	more
V1383 — Intrusion 08 Assoc Event Number	0	No Intrusion, None	more
V1384 — Intrusion 08 Max Intrusion X-axis	00 cm	0 cm or No Intrusion	more
V1385 — Intrusion 08 Max Intrusion Y-axis	00 cm	0 cm or No Intrusion	more
V1386 — Intrusion 08 Max Intrusion Z-axis	00 cm	0 cm or No Intrusion	more
V1387 — Intrusion 08 Occupant Number	00	No contact or no intrusion	more
V1388 — Intrusion 08 Injury Number	00	No injury or no intrusion	more
V1389 — Intrusion 08 Occupant Number	00	No contact or no intrusion	more
V1390 — Intrusion 08 Injury Number	99	Contact, injury unknown or data not collected	more
V1391 — Intrusion Number 09	00	No Intrusion, None	more
V1392 — Intrusion 09 Occupant Space Number	00	No Intrusion, None	more
V1393 — Intrusion 09 Intruding Object	00	No Intrusion, None	more
V1394 — Intrusion 09 Assoc Event Number	0	No Intrusion, None	more
V1395 — Intrusion 09 Max Intrusion X-axis	00 cm	0 cm or No Intrusion	more
V1396 — Intrusion 09 Max Intrusion Y-axis	00 cm	0 cm or No Intrusion	more
V1397 — Intrusion 09 Max Intrusion Z-axis	00 cm	0 cm or No Intrusion	more
V1398 — Intrusion 09 Occupant Number	00	No contact or no intrusion	more
V1399 — Intrusion 09 Injury Number	00	No injury or no intrusion	more
V1400 — Intrusion 09 Occupant Number	00	No contact or no intrusion	more
V1401 — Intrusion 09 Injury Number	99	Contact, injury unknown or data not collected	more
V1402 — Intrusion Number 10	00	No Intrusion, None	more
V1403 — Intrusion 10 Occupant Space Number	00	No Intrusion, None	more
V1404 — Intrusion 10 Intruding	00		

Object		No Intrusion, None	more
V1405 — Intrusion 10 Assoc Event Number	0	No Intrusion, None	more
V1406 — Intrusion 10 Max Intrusion X-axis	00 cm	0 cm or No Intrusion	more
V1407 — Intrusion 10 Max Intrusion Y-axis	00 cm	0 cm or No Intrusion	more
V1408 — Intrusion 10 Max Intrusion Z-axis	00 cm	0 cm or No Intrusion	more
V1409 — Intrusion 10 Occupant Number	00	No contact or no intrusion	more
V1410 — Intrusion 10 Injury Number	00	No injury or no intrusion	more
V1411 — Intrusion 10 Occupant Number	00	No contact or no intrusion	more
V1412 — Intrusion 10 Injury Number	99	Contact, injury unknown or data not collected	more
V1413 — Door Intrusion Number 01	88	Not Applicable	more
V1414 — Door Intrusion Number 01 Cause	8	Not applicable	more
V1415 — Door Intrusion Number 02	88	Not Applicable	more
V1416 — Door Intrusion Number 02 Cause	8	Not applicable	more
V1417 — Door Intrusion Number 03	88	Not Applicable	more
V1418 — Door Intrusion Number 03 Cause	8	Not applicable	more
V1419 — Door Intrusion 01 Component	88	Not Applicable	more
V1420 — Door Intrusion 01 Component Damaged 1	8	Not Applicable	more
V1421 — Door Intrusion 01 Component Damaged 2	8	Not Applicable	more
V1422 — Door Intrusion 02 Component	88	Not Applicable	more
V1423 — Door Intrusion 02 Component Damaged 1	8	Not Applicable	more
V1424 — Door Intrusion 02 Component Damaged 2	8	Not Applicable	more
V1425 — Door Intrusion 03 Component	88	Not Applicable	more
V1426 — Door Intrusion 03 Component Damaged 1	8	Not Applicable	more
V1427 — Door Intrusion 03 Component Damaged 2	8	Not Applicable	more

V1428 — Door Intrusion 04 Component	88	Not Applicable	more
V1429 — Door Intrusion 04 Component Damaged 1	8	Not Applicable	more
V1430 — Door Intrusion 04 Component Damaged 2	8	Not Applicable	more

**Case Vehicle
Airbag(s)**



[Click for Driver airbag figure](#)



[Click for Passenger airbag figure](#)

[Back to Top](#)

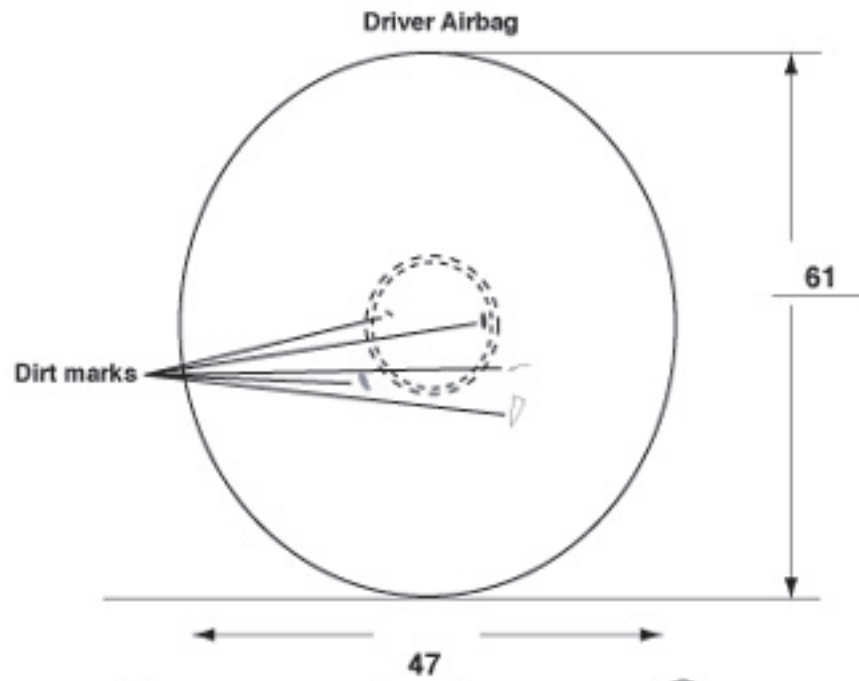
Variable Number and Name	Code Value	Code Description	Other Options
V1501 — Driver Airbag Equipped	1	Yes	more
V1502 — Driver Airbag Deployed	1	Yes	more
V1503 — Driver Airbag Condition	0	No Damage	more
V1504 — Passenger Airbag Equip	1	Yes	more
V1505 — Passenger Airbag Deployed	0	No	more
V1506 — Passenger Airbag Condition	8	Not Applicable (not equipped/not deployed)	more
V1507 — Steering Wheel Airbag Tether	1	Yes	more
V1508 — Driver Airbag Marked By Contact	0	No	more
V1509 — Passenger Airbag Tether	7	Unknown if tethered	more
V1510 — Passenger Airbag Marked By Contact	8	Not applicable (no airbag, not equipped, not deployed)	more

**Case Vehicle
Interior**

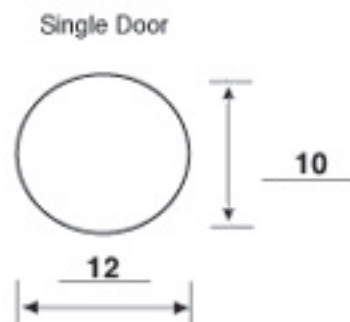
[Back to Top](#)

Variable Number and Name	Code Value	Code Description	Other Options
V1601 — Left Front Door Damaged	0	No	more
V1602 — Right Front Door Damaged	0	No	more
V1603 — Left Front Hardware Damaged	0	No	more

V1604 — Right Front Hardware Damaged	0	No	more
V1605 — Left Front Armrest Damaged	0	No	more
V1606 — Right Front Armrest Damaged	0	No	more
V1607 — Left Front Glass Damaged	0	No	more
V1608 — Right Front Glass Damaged	0	No	more
V1609 — Left Rear Door Area Damaged	0	No	more
V1610 — Right Rear Door Area Damaged	0	No	more
V1611 — Left Rear Hardware Damaged	0	No	more
V1612 — Right Rear Hardware Damaged	0	No	more
V1613 — Left Rear Armrest Damaged	0	No	more
V1614 — Right Rear Armrest Damaged	0	No	more
V1615 — Left Rear Glass Damaged	0	No	more
V1616 — Right Rear Glass Damaged	0	No	more

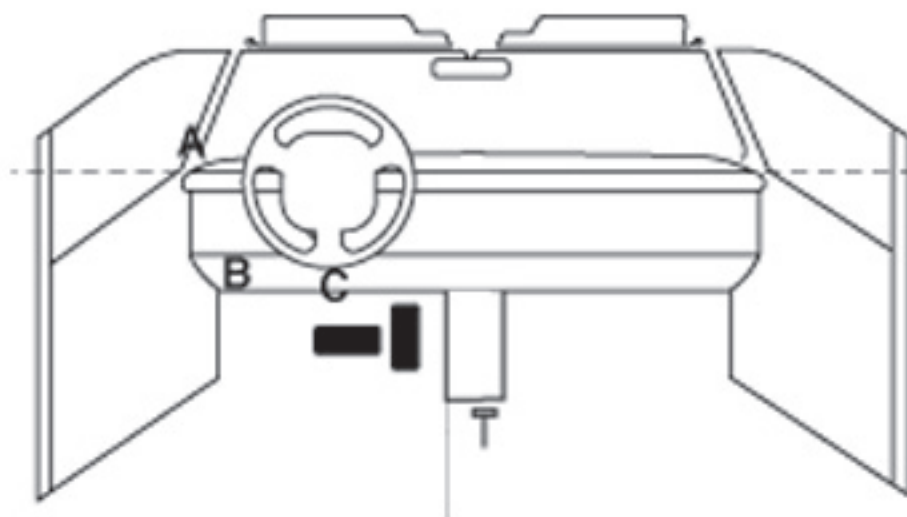


Driver Airbag Door



Vents: Y N
 if yes, how many: 2
 @10 & 2 o'clock

Tethers: Y N
 if yes, how many: 2



A = A-pillar, scrape mark

B = Knee bolster, scrape mark

C = Knee bolster, scuffmark

1 = Definitely 2 = Probably 3 = Possible

INTRUSION IT-1

Location of Intrusion	Intruded Component	(All Measurements Are in Centimeters)				Dominant Crush Direction
		Comparison Value	–	Intruded Value	= Intrusion	
11	Toe pan	68	–	61	= 7	to rear

OCCUPANT CONTACT WORKSHEET

Contact	Interior Component Contacted	Occupant No. if Known	Body Region if Known	Supporting Physical Evidence	Confidence Level of Contact Point
A	A-pillar	1	Unknown	Scrape mark	3
B	Knee bolster	1	Unknown	Scrape mark	3
C	Knee bolster	1	Knee	Scuffmark	1
D					
E					
F					
G					
H					
I					
J					
K					

No damage to windshield



WINDSHIELD MARK ON CASE VEHICLE:



S A F E G U A R D



DOT15 LOF M-38

AS1 C . .

T

43R-001232

||

U

Z



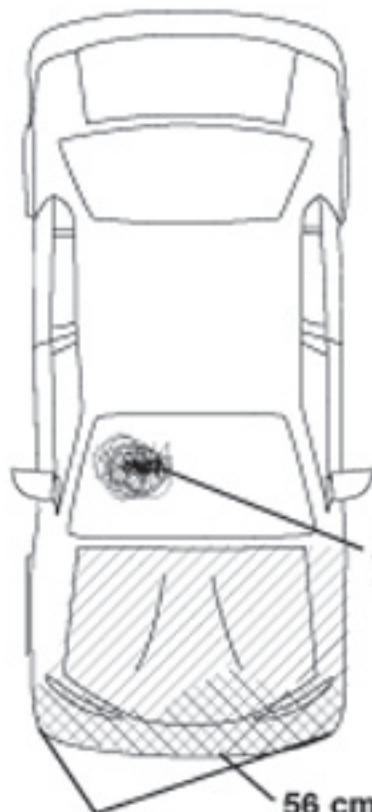
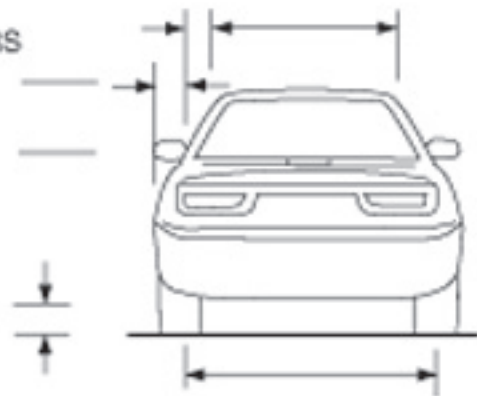
000056

MEASUREMENTS IN CENTIMETERS

Airbag module cover contact



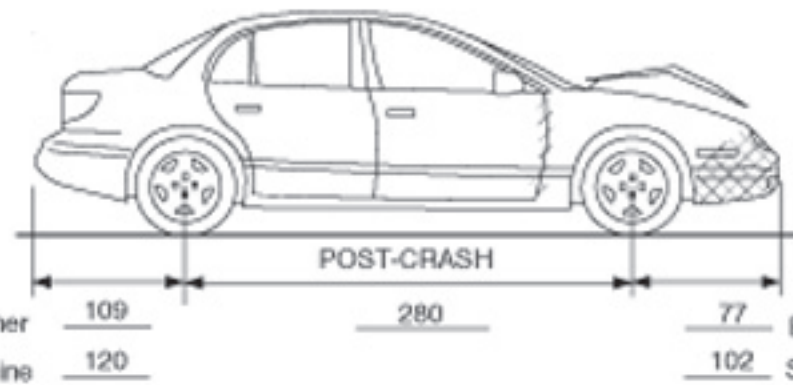
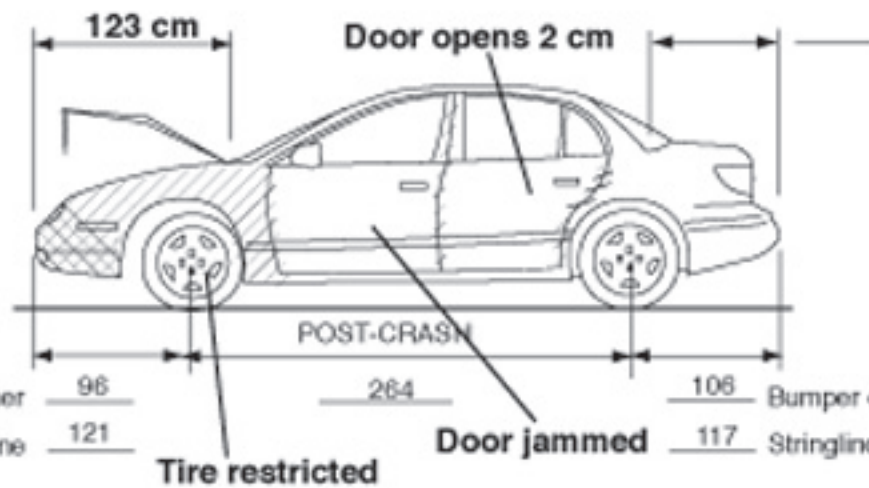
Original Bumper Height



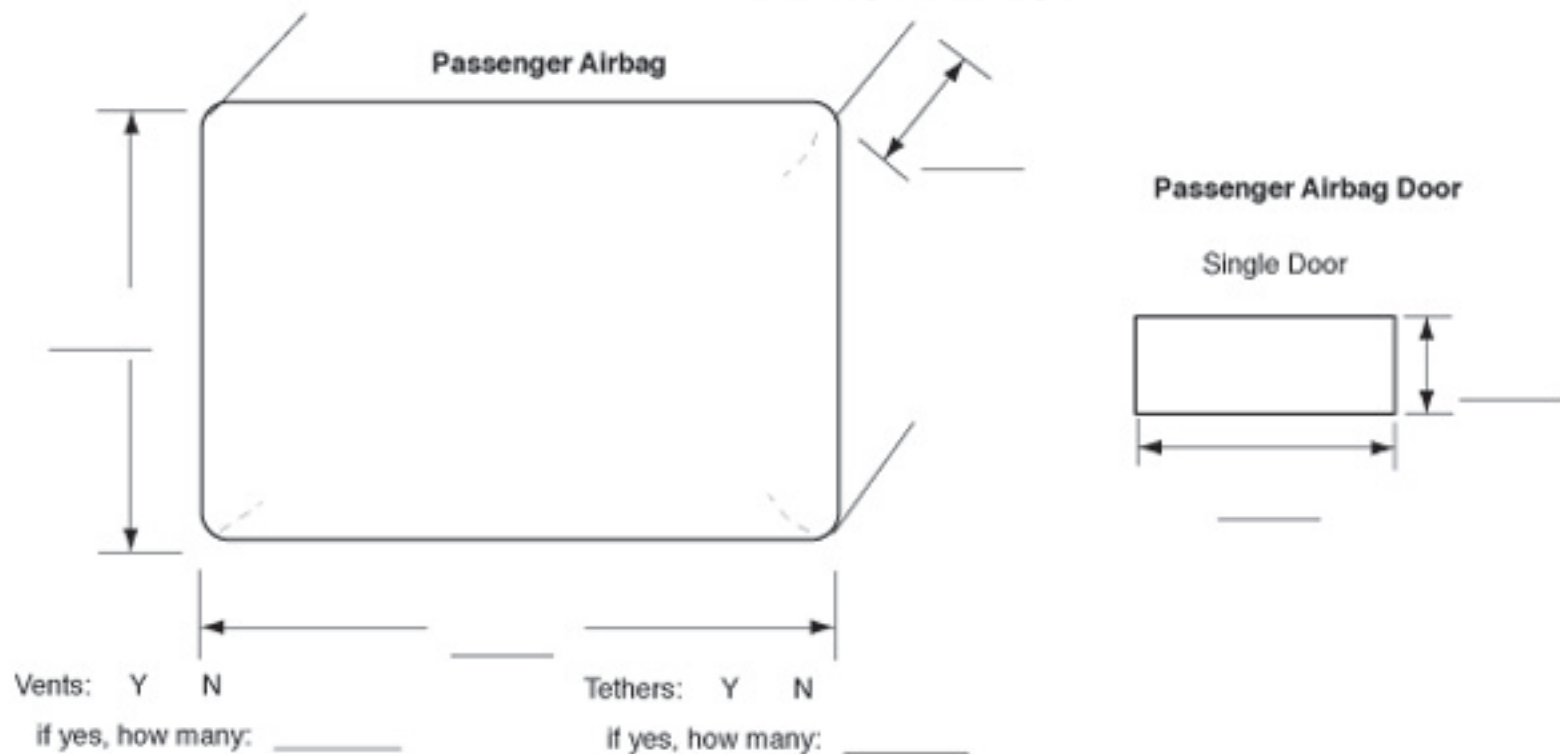
Airbag module cover contact

148 cm Direct damage

56 cm Max crush



DID NOT DEPLOY













91051739

91051739

SALES



WARNING
SEEK OUT THE SEATED AIR BAGS



A warning sticker is affixed to the ceiling of the vehicle, featuring a yellow header and a diagram of a person seated in a car seat with an air bag deployed. The text below the diagram reads 'SEEK OUT THE SEATED AIR BAGS' and provides instructions on how to identify and deactivate them.



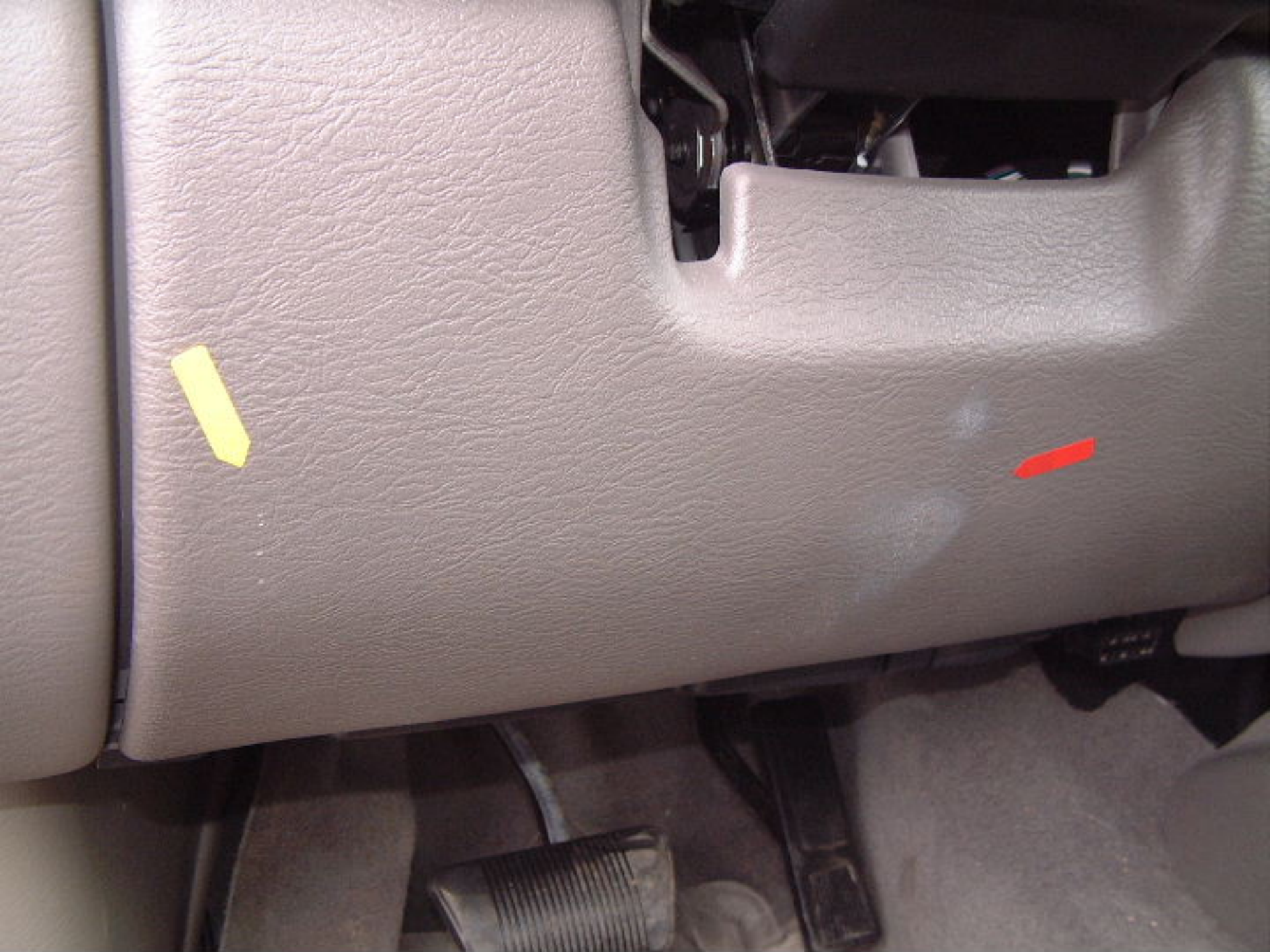






















2

3

4

5

6

7

8

9

10

11

12

Jeep







3.7L







GRAND CHEROKEE

Jeep
4x4

3.7L



1127314

GRAND

Jeep
4x4

1154133



9725173FX

LIBERTY

GOODYEAR

W-915



91251/3FX

91141

LIBERTY

GOODYEAR







WRANGLER

SR-A

GOODYEAR

LIBERTY





9725173FX

Jeep

9725173FX

FX

1/5/03









1725173FX

B

1/5/15

Jeep















Jeep



9944213

725173FX

97257354

Jeep

LIBERTY

WRANGLER

WOODRIDGE













9725173FX

D

1/15/03

Jeep











ONLY



Boys & Girls
Club of America

Boys & Girls
Club of America

WALDEN





ONLY







TRW 23014254-C



