

# Case 452 : Narrative

Case Vehicle (A): 2002 Jeep
Type: Liberty, 4x4, 4-door SUV
Driver: 30-year-old male
CDC: 99-0000-0, 12-FLEE-3

## SITUATION

It was dark and lighted, the sky was cloudy, and the asphalt surface of the two-way unmarked private road with a posted speed limit of 15 mph (24 kph) was dry and free of defects as case vehicle (A) was traveling west at a driver-estimated speed of 40 mph (64 kph). [1](#) [2](#) [3](#) [4](#) As the road curved to the right, the driver was reportedly distracted by the right-front passenger and case vehicle (A) went straight and [5](#) exited the left side of the road. [6](#) Case vehicle (A) struck and went over a 7-cm diameter light pole, and [7](#) [8](#) then struck a 24-cm diameter tree with the left front. The vehicle was towed due to damage.

The police accident report indicates A-level injuries for the driver and the right-front passenger of case vehicle (A), and both were transported to an area hospital where they were admitted for treatment.

## GENERAL VEHICLE DAMAGE AND ESTIMATED CRASH SEVERITIES

[9](#) [10](#) Direct damage to case vehicle (A) began at the left-front bumper corner and extended 22-cm to the right, resulting in 18% vehicle overlap (%VOL). [11](#) The maximum rearward crush at bumper level was 20 cm, and it occurred at the left-front bumper corner. Damage from the first impact with the light pole was obscured by the damage from the impact with the tree.

Using the WinSMASH crash-reconstruction program and a crush profile for [11](#) [12](#) [13](#) [14](#) [15](#) case vehicle (A), the following impact severity was estimated for the frontal impact with the tree:

		Estimated Velocity Change - kph (mph)		
Vehicle	Variable	Total	Longitudinal	Latitudinal
Case Vehicle (A)	delta V	34 (21)	-34 (-21)	6 (4)

## DESCRIPTION OF DAMAGE TO CASE VEHICLE (A)

### Exterior

[16](#) [17](#) In the front, the primary damage was to the left corner, which was crushed rearward. [18](#) [19](#) The left-front corner of the bumper cover was broken off and the cover was cracked and scraped near the broken edge. [20](#) The left edge of the grille was broken off and the left headlight assembly, the turn-signal lamp, and the running light were destroyed. [21](#) The right headlight assembly was displaced slightly down, but the lamp was intact. [22](#) [23](#) The hood latch was damaged and jammed closed and both

hood hinges were damaged. The rear edge of the hood was slightly elevated but it did not contact the windshield. [24](#) There were two slightly overlapping spider-web cracks in the center of the windshield and there were glass pieces missing from the outside center of the windshield near the top.

[25](#) On the left side, the fender and the left-front wheel were crushed rearward and [26 27](#) the left-front wheel was also displaced to the left, [28](#) the left-front tire was cut and deflated, [29](#) and the left wheelbase was reduced by 10 cm. [30](#) The driver door, which reportedly opened during the crash due to body distortion, was displaced rearward and would not close, and the door glazing was broken. The left-rear door was closed and operational and all other left-side glazing was intact.

[31](#) There was no damage to the rear of case vehicle (A). [32 33 34](#) There was also no damage to the right side, but there was a 2-cm increase in the right wheelbase.

## Interior

[35](#) This vehicle was equipped with steering-wheel and dash-mounted frontal-impact airbags and [36](#) both deployed during the frontal impact with the tree. [37](#) In the driver area, there was no damage to the deployed steering-wheel airbag but the airbag fabric was stained with blood. [38](#) There was also no damage to the airbag module cover [39](#) but it was stained with blood. [40 41](#) The upper-left section of the steering-wheel rim was slightly deformed but there was no rotation of the steering column. [42](#) The windshield-wiper lever was broken and the plastic steering-column cover was split open. [44 45](#) The knee bolster to the left of the steering column was dented and [46](#) there was a scuffmark on the knee bolster to the right of the steering column. [47](#) The driver toe pan was buckled and displaced 4 cm rearward and the gas pedal was deflected to the left. [48](#) There was no other damage in the driver area.

[49 50](#) In the center-front area, the rearview mirror was not damaged but it was knocked off its windshield mount [51](#) and it may have contacted and cracked the center portion of the windshield, causing the spider-web cracks. [52](#) The upper instrument panel was separated from the mid instrument panel and the plastic cover of the center stack/vertical console was loose. [53](#) There was no other damage in the center-front area.

In the right-front seating area, [54](#) there was no damage to the deployed dash-mounted airbag [55](#) or to the airbag module cover. [56 57](#) The glove-box door was scuffed and would not close but [58](#) there was no other damage in the right-front seating area.

[59 60 61 62 63](#) There was no damage in the rear seating area of case vehicle (A).

## OCCUPANT KINEMATICS AND INJURIES

[64](#) The 183-cm, 77-kg (6-ft, 170-lb) 30-year-old male driver was not using the three-point belt and [65](#) the steering-wheel airbag deployed during the frontal impact with the tree. There was no evidence of belt use [66](#) on the D-ring or [67 68](#) on the continuous loop. During the frontal impact, the driver moved forward relative to the vehicle interior into the airbag and the knee bolster. He sustained an abrasion to the left side of the forehead and an abrasion to the left cheek, possibly from contact by the deploying steering-wheel airbag. He sustained a laceration to the left upper eyelid, possibly from broken glass from the driver-door window. He sustained a dislocation and a contusion to the right shoulder and a displaced fracture to the distal left radius, possibly from bracing against the steering-wheel rim during the frontal impact. He also sustained fractures to left ribs 10 through 12 with a small left pneumothorax, possibly from chest contact with unknown interior components to the left of the steering wheel.

69 The 26-year-old female right-front passenger was not using the three-point belt and 70 the dash-mounted airbag deployed during the frontal impact with the tree. 71 There was no evidence of belt use on the D-ring or 72 73 on the continuous loop. During the frontal impact, she moved forward relative to the vehicle interior, into the dash-mounted airbag and the knee bolster/glove box. She sustained a fracture to the transverse process of L5, and fractures to the left sacrum, the left inferior pubic ramus, and the pubic symphysis, from unknown sources. She also sustained a displaced fracture to the proximal aspect of the left fibular neck and a transverse fracture to the mid shaft of the left tibia, probably due to axial compression of the leg due to wedging of the left knee and foot between the knee bolster and the toe-pan.

The following tables and 74 75 attached drawings summarize the injuries sustained by the driver and the right-front passenger of case vehicle (A).

Occupant: Driver	Age: 30 years	Gender: Male		
Restraints: Steering-wheel airbag	Stature: 183 cm (6 ft)	Mass: 77 kg (170 lb)		
Injury Description	A.I.S.	Injury Source		
		Definite	Probable	Possible
—	—	—	—	—
Laceration, left upper eyelid	1	—	—	Broken glass (driver door window)
Abrasion, left side of forehead	1	—	—	Airbag
Abrasion, left cheek	1	—	—	Airbag
Contusion, right shoulder	1	—	—	Bracing against steering-wheel rim
Dislocation, right shoulder	2	—	—	Bracing against steering-wheel rim
Displaced fracture, distal left radius	3	—	—	Bracing against steering-wheel rim
Fractures, left ribs 10 ?12 with left pneumothorax	3	—	—	Unknown vehicle interior component to left of steering wheel
Maximum A.I.S. Level	3	—	—	—
Injury Severity Score	19	—	—	—

Occupant: Right front	Age: 26 years	Gender: Female		
Restraints: Dash-mounted airbag	Stature: Unknown	Mass: Unknown		
Injury Description	A.I.S.	Injury Source		
—	—	Definite	Probable	Possible
Fracture, transverse process of L5	2	Unknown	—	—
Fracture, left sacrum	2	Unknown	—	—
Fracture, pubic symphysis	3	Unknown	—	—
Fracture, left inferior pubic ramus	2	Unknown	—	—
Displaced fracture, proximal aspect of left fibular neck	2	—	Wedging of leg between toepan and knee bolster	—
Transverse fracture, mid shaft left tibia	2	—	Wedging of leg between toepan and knee bolster	—
Maximum A.I.S. Level	3	—	—	—
Injury Severity Score	13	—	—	—

CASE NO.: 452

CASE VEHICLE: 2002 Jeep

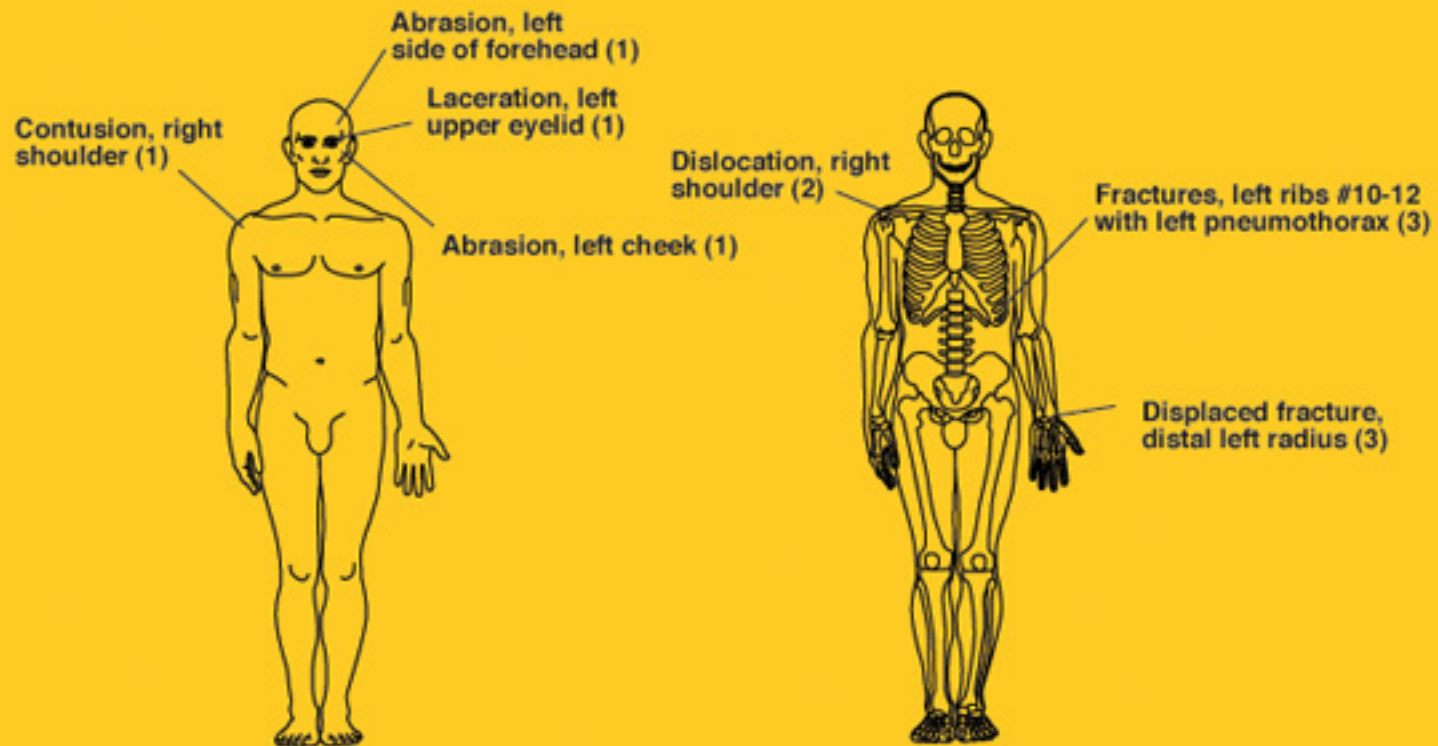
TYPE: Liberty Sport, 4x4, 4-door SUV

OCCUPANT: Driver: 30-year-old male

STATURE: 183 cm (6 ft) MASS: 77 kg (170 lb)

RESTRAINTS: Steering-wheel airbag

SEVERITY: MAIS - 3 ISS - 19



CASE NO.: 452

CASE VEHICLE: 2002 Jeep

TYPE: Liberty Sport, 4x4, 4-door SUV

OCCUPANT: Right front: 26-year-old female

STATURE: Unknown MASS: Unknown

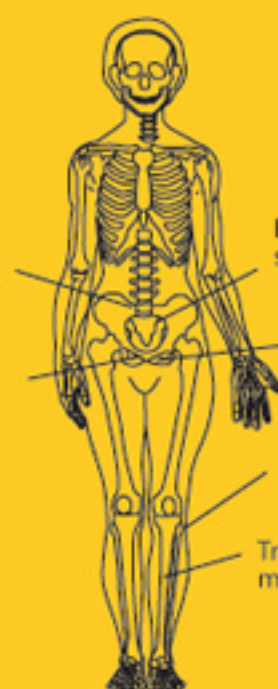
RESTRAINTS: Dash-mounted airbag

SEVERITY: MAIS - 3 ISS - 13



Fracture, transverse  
process L5 (2)

Fracture, pubic  
symphysis (3)



Fracture, left  
sacrum (2)

Fracture, inferior  
left pubic ramus (2)

Displaced fracture, proximal  
aspect of left fibular neck (2)

Transverse fracture,  
mid shaft left tibia (2)

Case No.: 452

Case Vehicle (A): 2002 Jeep

Type: Liberty Sport, 4x4, 4-door SUV

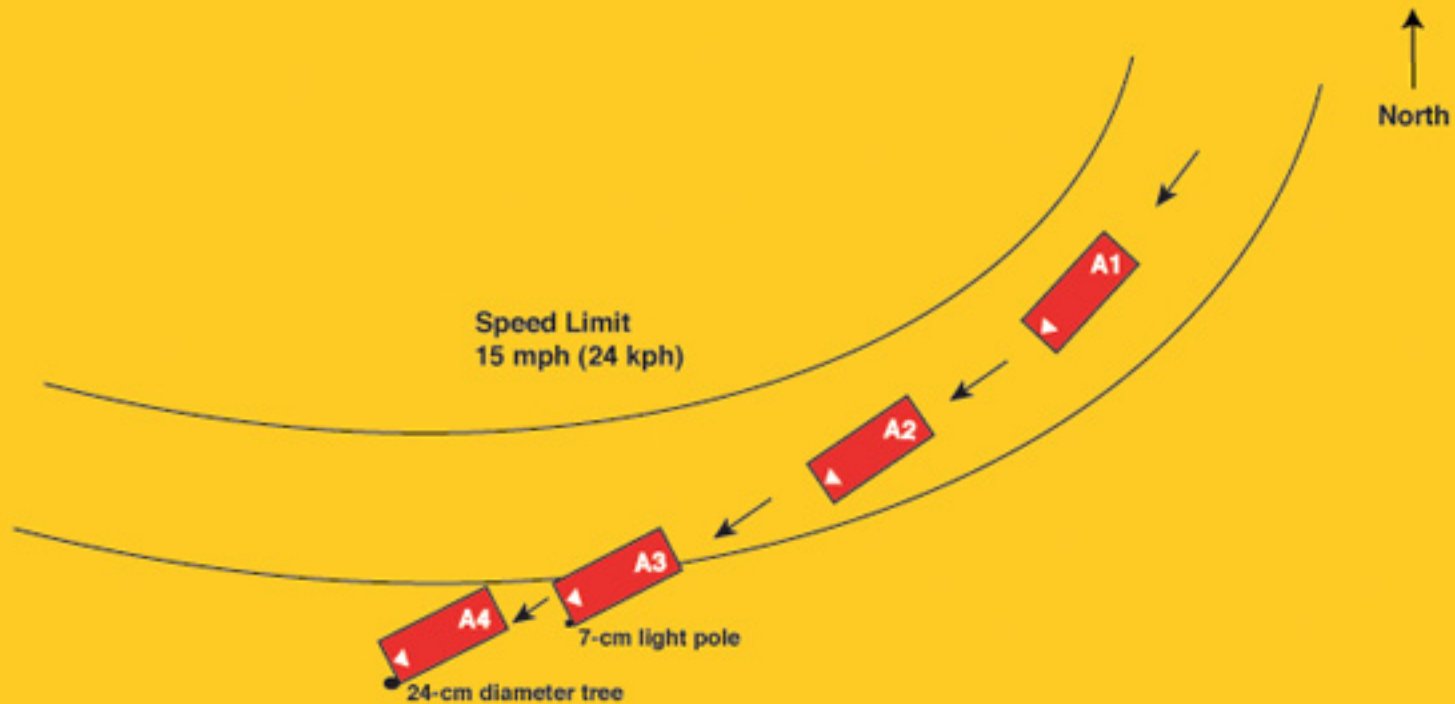
Driver: 30-year-old male

Light Conditions: Dark, lighted

Weather: Cloudy

Road Surface: Dry

Road Construction: Asphalt



# Case 452: Vehicle Report

Click on Section Name to jump directly to that Section —

- [General Information](#)
  - [Other Vehicle](#)
  - [Case Vehicle General](#)
  - [Case Vehicle Damage Description](#)
  - [Crash Reconstruction](#)
  - [Case Vehicle Tires & Rims](#)
  - [Case Vehicle Fuel Tank](#)
  - [Case Vehicle Fuel Leakage](#)
  - [Case Vehicle Fire](#)
  - [Case Vehicle Exterior](#)
  - [Case Vehicle Steering Column/Rim](#)
  - [Case Vehicle Intrusion](#)
  - [Case Vehicle Airbag\(s\)](#)
  - [Case Vehicle Interior](#)
  - [Case Vehicle Seats](#)
  - [Case Vehicle Side Airbag\(s\)](#)
  - [EDR -- Event Data Recorder](#)
- 

## General Information

[Back to Top](#)

Variable Number	Variable Name	Code Value	Code Description	Other Options
V0204	Collision Hour	0309	Time of day (24 hour clock)	<a href="#">more</a>
V0205	State Fips Code	26	Michigan	<a href="#">more</a>
V0206	Urban/rural Area	1	Urban	<a href="#">more</a>
V0207	Limited Access Highway	0	No	<a href="#">more</a>
V0208	Road Total Lanes	2	2 lanes	<a href="#">more</a>
V0209	Intersect Road Total Lanes	8	Not applicable	<a href="#">more</a>
V0210	Trafficway Flow	0	Not physically divided - two way traffic	<a href="#">more</a>
V0211	Road Surface Type	1	Asphalt	<a href="#">more</a>
V0212	Road Defects	0	No	<a href="#">more</a>
V0213	Construction Zone	0	No	<a href="#">more</a>
V0214	Road Alignment Vertical Plane	1	Level	<a href="#">more</a>



V0215	Road Alignment Horizontal Plane	2	Curve	<a href="#">more</a>
V0216	Surface Covering	10	Dry	<a href="#">more</a>
V0217	Visibility Limitation	0	None	<a href="#">more</a>
V0218	Visibility Obstruction	0	None	<a href="#">more</a>
V0219	Speed Limit	0	5-45 km/h .. 5-25 mph	<a href="#">more</a>
V0220	Precipitation Type	0	None	<a href="#">more</a>
V0221	Precipitation Rate	8	Not applicable	<a href="#">more</a>
V0222	Temperature	2	-5 to -1 C .. 23 to 31 F	<a href="#">more</a>
V0223	Crosswind	9	Unknown	<a href="#">more</a>
V0224	Light Conditions	4	Dark, lighted	<a href="#">more</a>
V0225	Mechanical Malfunction Mention	0	No	<a href="#">more</a>
V0226	Case Vehicle And Object	4	Yes, fixed object off-road	<a href="#">more</a>
V0227	Case Vehicle Rollover	0	No	<a href="#">more</a>
V0228	Rollover Location	0	No rollover	<a href="#">more</a>
V0229	Roll Direction	0	No rollover	<a href="#">more</a>
V0230	Rollover Initiation Type	0	No rollover	<a href="#">more</a>
V0231	Rollover Number Of Turns	0	No rollover	<a href="#">more</a>
V0232	Case Vehicle Preimpact Braking	9	Unknown	<a href="#">more</a>
V0233	Case Vehicle Preimpact Stability	9	Case vehicle pre-impact stability unknown	<a href="#">more</a>
V0234	Case Vehicle Ran Off Roadway	1	Yes	<a href="#">more</a>
V0235	Moving Case Vehicle Contacted Moving Vehicle	0	No	<a href="#">more</a>
V0236	Case Vehicle Contacted Stopped Vehicle	0	No	<a href="#">more</a>
V0237	Stopped Case Vehicle Contacted Vehicle	0	No	<a href="#">more</a>
V0238	Total Vehicles Hit By Case Vehicle	0	0 vehicles	<a href="#">more</a>
V0239	Any Fire In Crash?	0	No	<a href="#">more</a>
V0240	Maximum Police Severity-acc	3	A - Incapacitating Injury	<a href="#">more</a>
V0241	Driver Alcohol Involvmnt	1	Had been drinking	<a href="#">more</a>
V0242	Driver Alcohol BAC (Case Vehicle)	80	No test	<a href="#">more</a>
V0243	Driver Impairment Mention	1	Yes	<a href="#">more</a>
V0244	Driver Distraction	03	By other occupant(s)	<a href="#">more</a>

V0245	Driver Drug Involvement	0	None	<a href="#">more</a>
V0246	Driver Drug Type	0	No drug use	<a href="#">more</a>
V0247	Driven/towed From Scene	2	Towed Due to Damage	<a href="#">more</a>

## Other Vehicle

[Back to Top](#)

Variable Number	Variable Name	Code Value	Code Description	Other Options
V0301	Other Vehicle VIN	0 xxxxxxx	—	<a href="#">more</a>
V0302	Other Vehicle Manufacturer/Body Code	99898	—	—
V0303	Other Vehicle Manufacturer	998	Unknown Other Vehicle	<a href="#">more</a>
V0304	Other Vehicle Body Code	98	No Other Vehicle	<a href="#">more</a>
V0305	Other Vehicle Make/model	0000	No other vehicle	<a href="#">more</a>
V0306	Other Vehicle Model Year	00	Year	<a href="#">more</a>
V0307	Other Vehicle Mass	000000 kg	No Other Vehicle	<a href="#">more</a>
V0308	Other Vehicle Number	8	No other vehicle	<a href="#">more</a>
V0309	Other Vehicle Number of Occupants	98	No Other Vehicle	<a href="#">more</a>
V0310	Other Vehicle Traveling Speed	990	No Other Vehicle	<a href="#">more</a>
V0311	Highest Police Injury Severity	8	No Other Vehicle	<a href="#">more</a>
V0312	Other Vehicle Type	98	No Other Vehicle	<a href="#">more</a>
V0313	Other Vehicle Wheelbase in Centimeters	998	No Other Vehicle	<a href="#">more</a>
V0314	Other Vehicle Average Track Width	998	No Other Vehicle	<a href="#">more</a>
V0315	Other Vehicle Overall Length	998	No Other Vehicle	<a href="#">more</a>
V0316	Other Vehicle Overall Width (OAW)	998	No Other Vehicle	<a href="#">more</a>
V0317	Other Vehicle Front Overhang	998	No Other Vehicle	<a href="#">more</a>
V0318	Other Vehicle Rear Overhang	998	No Other Vehicle	<a href="#">more</a>
V0319	Other Vehicle Undeformed End Width (UEW)	998	No Other Vehicle	<a href="#">more</a>
V0320	Other Vehicle Engine Displacement	0.0 l	No Other Vehicle	<a href="#">more</a>
V0321	Other Vehicle Engine: Number of Cylinders	98	No Other Vehicle	<a href="#">more</a>

V0322	Other Vehicle Direct Damage Length (DDL)	998	No Other Vehicle	<a href="#">more</a>
V0323	Other Vehicle Front-End Overlap	99	Missing or Not applicable	<a href="#">more</a>
V0324	Other Vehicle - Vehicle Overlap	99	Missing or Not applicable	<a href="#">more</a>

## Case Vehicle General

[Back to Top](#)

Variable Number	Variable Name	Code Value	Code Description	Other Options
V0401	VIN	1J4GL48K42XXXXXX	<a href="#">Click for Case Vehicle figure</a>	<a href="#">more</a>
V0402	Manufacturer/Body Code	15214	—	—
V0403	Vehicle Manufacturer	152	Kaiser/Jeep	<a href="#">more</a>
V0404	Vehicle Body Code	14	Short wheelbase utility vehicle (Jeep, Bronco)	<a href="#">more</a>
V0405	Make/model Code	3422	Liberty SUV	<a href="#">more</a>
V0406	Model Year	2002	Model year	<a href="#">more</a>
V0407	Vehicle Mass	001867 kg	Mass (Kg)	<a href="#">more</a>
V0408	Odometer Reading	888888	—	—
V0409	Number of Occupants	02	2 occupants	<a href="#">more</a>
V0410	Traveling Speed	064 kph	Speed (km/h)	<a href="#">more</a>
V0411	Body Type	21	Small utility (e.g. Jeep, Scout, Bronco)	<a href="#">more</a>
V0412	Stolen Vehicle	8	Not currently collected	<a href="#">more</a>
V0413	Body Structure	1	Body and frame	<a href="#">more</a>
V0414	Transmission Type	1	Automatic	<a href="#">more</a>
V0415	Transmission Lever Location	2	Console	<a href="#">more</a>
V0416	Steering	1	Power	<a href="#">more</a>
V0417	Brakes	1	Power	<a href="#">more</a>
V0418	Brake Type	2	Disc - front wheels	<a href="#">more</a>
V0419	Adjustable Pedals?	0	No	<a href="#">more</a>
V0420	Brake Anti-lock Device	2	Four-wheel	<a href="#">more</a>
V0421	Air Conditioning in Vehicle	8	Not currently collected	<a href="#">more</a>
V0422	Drive Type	3	Four wheel	<a href="#">more</a>
V0423	Dual Rear Wheels	0	No	<a href="#">more</a>
V0424	Original Restraint	3	Air bag	<a href="#">more</a>

	System Type			
V0425	Equipped With Roll Bar	0	No	<a href="#">more</a>
V0426	Roof Type	1	Solid	<a href="#">more</a>
V0427	Case Vehicle Wheelbase in Centimeters	265 cm	Actual Wheelbase	<a href="#">more</a>
V0428	Anti-lacerative Glass	8	Not Collected	<a href="#">more</a>
V0429	Case Vehicle average track Width	153 cm	actual measurement (cm)	<a href="#">more</a>
V0430	Case Vehicle Overall Length	422 cm	actual measurement (cm)	<a href="#">more</a>
V0431	Case Vehicle Overall Width (OAW)	182	actual measurement (cm)	<a href="#">more</a>
V0432	Case Vehicle Front Overhang	075 cm	actual measurement (cm)	<a href="#">more</a>
V0433	Case Vehicle Rear Overhang	082 cm	actual measurement (cm)	<a href="#">more</a>
V0434	Case Vehicle Undeformed End Width (UEW)	160 cm	actual measurement (cm)	<a href="#">more</a>
V0435	Case Vehicle Engine Displacement	3.7 l	Liters	<a href="#">more</a>
V0436	Case Vehicle Engine: Number of Cylinders	06	number of cylinders	<a href="#">more</a>
V0437	Case Vehicle Direct Damage Length (DDL)	022 cm	actual measurement (cm)	<a href="#">more</a>
V0438	Case Vehicle Front-end Overlap	14	percentage (%)	<a href="#">more</a>
V0439	Case Vehicle - Vehicle Overlap	18	percentage (%)	<a href="#">more</a>

### Case Vehicle Damage Description

[Back to Top](#)

Variable Number	Variable Name	Code Value	Code Description	Other Options
V0501	Maximum Sheet Metal Crush - Front	050 cm	Depth of Crush (cm)	<a href="#">more</a>
V0502	Maximum Sheet Metal Crush - Right Side	000 cm	No Crush (or less than 1 cm.)	<a href="#">more</a>
V0503	Maximum Sheet Metal Crush - Rear	000 cm	No Crush (or less than 1 cm.)	<a href="#">more</a>
	Maximum Sheet Metal Crush			

V0504	- Left Side	000 cm	No Crush (or less than 1 cm.)	<a href="#">more</a>
V0505	Maximum Sheet Metal Crush - Roof	000 cm	No Crush (or less than 1 cm.)	<a href="#">more</a>
V0506	Maximum Sheet Metal Crush - Other	000 cm	No Crush (or less than 1 cm.)	<a href="#">more</a>
V0507	Seq In Chronological Ord	1	Yes	<a href="#">more</a>
V0508	Event 1 -impact Location	4	Outside Roadside right-of-way	<a href="#">more</a>
V0509	Event 1 -Impact Configuration	17	FRONT of case veh - object	<a href="#">more</a>
V0510	Event 1 -Object/Vehicle Contactd	77	Sign post, utility pole, tree	<a href="#">more</a>
V0511	Event 2 -impact Location	4	Outside Roadside right-of-way	<a href="#">more</a>
V0512	Event 2 -Impact Configuration	17	FRONT of case veh - object	<a href="#">more</a>
V0513	Event 2 -Object/Vehicle Contactd	77	Sign post, utility pole, tree	<a href="#">more</a>
V0514	Event 3 -impact Location	8	No 3rd event	<a href="#">more</a>
V0515	Event 3 -Impact Configuration	88	No 3rd event	<a href="#">more</a>
V0516	Event 3 -Object/Vehicle Contactd	00	No object/vehicle contacted	<a href="#">more</a>
V0517	Event 4 -impact Location	8	No 4th event	<a href="#">more</a>
V0518	Event 4 -Impact Configuration	88	No 4th event	<a href="#">more</a>
V0519	Event 4 -Object/Vehicle Contactd	00	No object/vehicle contacted	<a href="#">more</a>
V0520	Event 5 -impact Location	8	No 5th event	<a href="#">more</a>
V0521	Event 5 -Impact Configuration	88	No 5th event	<a href="#">more</a>
V0522	Event 5 -Object/Vehicle Contactd	00	No object/vehicle contacted	<a href="#">more</a>
V0523	Event 6 -impact Location	8	No 6th event	<a href="#">more</a>
V0524	Event 6 -Impact Configuration	88	No 6th event	<a href="#">more</a>
V0525	Event 6 -Object/Vehicle Contactd	00	No object/vehicle contacted	<a href="#">more</a>
V0526	Event 7 -impact Location	8	No 7th event	<a href="#">more</a>
V0527	Event 7 -Impact Configuration	88	No 7th event	<a href="#">more</a>
V0528	Event 7 -Object/Vehicle Contactd	00	No object/vehicle contacted	<a href="#">more</a>
	Primary CDC Case Vehicle -			

V0529	event Number	2	Event 2	<a href="#">more</a>
V0530	Primary CDC Case Vehicle - Impact Speed (kph)	999	Unknown	<a href="#">more</a>
V0531	Primary CDC Case Vehicle-estimatr	1	Investigator	<a href="#">more</a>
V0532	Primary CDC Case Vehicle - Crush (CM)	050	Crush measurements in cm	<a href="#">more</a>
V0533	Primary CDC Case Vehicle-clock #1	12	12 o'clock	<a href="#">more</a>
V0534	Primary CDC Case Vehicle-Letter 1 #1	06	F - Front	<a href="#">more</a>
V0535	Primary CDC Case Vehicle-Letter 2 #1	12	L - Left (Front or Rear)	<a href="#">more</a>
V0536	Primary CDC Case Vehicle-Letter 3 #1	05	E - Everything below belt line	<a href="#">more</a>
V0537	Primary CDC Case Vehicle-Letter 4 #1	05	E - Corner (extends from corner to = or < 16 in	<a href="#">more</a>
V0538	Primary CDC Case Vehicle - Extent #1	2	—	—
V0539	Primary CDC - Contacted Vehicles Assoc CDC - CDC #1	12FLEE2	—	—
V0540	Primary CDC Case Vehicle-clock #2	98	Not Applicable	<a href="#">more</a>
V0541	Primary CDC Case Vehicle-Letter 1 #2	00	Missing Data/Not applicable	<a href="#">more</a>
V0542	Primary CDC Case Vehicle-Letter 2 #2	00	Missing Data/Not applicable	<a href="#">more</a>
V0543	Primary CDC Case Vehicle-Letter 3 #2	00	Missing Data/Not applicable	<a href="#">more</a>
V0544	Primary CDC Case Vehicle-Letter 4 #2	00	Missing Data/Not applicable	<a href="#">more</a>
V0545	Primary CDC Case Vehicle - Extent #2	0	—	—
V0546	Primary CDC - Case Vehicle Assoc CDC - CDC #2	9800000	—	—
V0547	Primary CDC Contacted Vehicle - Impact Speed (kph)	998	Not Applicable	<a href="#">more</a>
V0548	Primary CDC Contacted Vehicle-estimator	8	Not applicable (no vehicle/no impact)	<a href="#">more</a>
V0549	Primary CDC Contacted Vehicle - Crush (CM)	998	Not Applicable	<a href="#">more</a>
V0550	Primary CDC Contacted	98	Not Applicable	<a href="#">more</a>

	Vehicle-clock #1			
V0551	Primary CDC Contacted Vehicle-Letter 1 #1	00	Missing Data/Not applicable	<a href="#">more</a>
V0552	Primary CDC Contacted Vehicle-Letter 2 #1	00	Missing Data/Not applicable	<a href="#">more</a>
V0553	Primary CDC Contacted Vehicle-Letter 3 #1	00	Missing Data/Not applicable	<a href="#">more</a>
V0554	Primary CDC Contacted Vehicle-Letter 4 #1	00	Missing Data/Not applicable	<a href="#">more</a>
V0555	Primary CDC Contacted Vehicle - Extent #1	0	—	—
V0556	primary CDC - Contacted Vehicles Assoc CDC - CDC #1	9800000	—	—
V0557	Primary CDC Contacted Vehicle-clock #2	98	Not Applicable	<a href="#">more</a>
V0558	Primary CDC Contacted Vehicle-Letter 1 #2	00	Missing Data/Not applicable	<a href="#">more</a>
V0559	Primary CDC Contacted Vehicle-Letter 2 #2	00	Missing Data/Not applicable	<a href="#">more</a>
V0560	Primary CDC Contacted Vehicle-Letter 3 #2	00	Missing Data/Not applicable	<a href="#">more</a>
V0561	Primary CDC Contacted Vehicle-Letter 4 #2	00	Missing Data/Not applicable	<a href="#">more</a>
V0562	Primary CDC Contacted Vehicle - Extent #2	0	—	—
V0563	Primary CDC - Contacted Vehicles Assoc CDC - CDC #2	9800000	—	—
V0564	Secondary CDC Case Vehicle-event No	1	Event 1	<a href="#">more</a>
V0565	Secondary CDC Case Vehicle - Impact Speed (kph)	998	Not Applicable	<a href="#">more</a>
V0566	Secondary CDC Case Vehicle-estimator	8	Not applicable (no vehicle/no impact)	<a href="#">more</a>
V0567	Secondary CDC Case Vehicle - Crush (CM)	998	Not Applicable	<a href="#">more</a>
V0568	Secondary CDC Case Vehicle-clock #1	99	Unknown or no damage	<a href="#">more</a>
V0569	Secondary CDC Case Vehicle-Letter 1 #1	00	Missing Data/Not applicable	<a href="#">more</a>
V0570	Secondary CDC Case Vehicle-Letter 2 #1	00	Missing Data/Not applicable	<a href="#">more</a>

V0571	Secondary CDC Case Vehicle-Letter 3 #1	00	Missing Data/Not applicable	<a href="#">more</a>
V0572	Secondary CDC Case Vehicle-Letter 4 #1	00	Missing Data/Not applicable	<a href="#">more</a>
V0573	SECONDARY CDC CASE VEHICLE - EXTENT #1	0	—	—
V0574	Secondary CDC - Case Vehicle Assoc CDC - CDC #1	9900000	—	—
V0575	Secondary CDC Case Vehicle-clock #2	98	Not Applicable	<a href="#">more</a>
V0576	Secondary CDC Case Vehicle-Letter 1 #2	00	Missing Data/Not applicable	<a href="#">more</a>
V0577	Secondary CDC Case Vehicle-Letter 2 #2	00	Missing Data/Not applicable	<a href="#">more</a>
V0578	Secondary CDC Case Vehicle-Letter 3 #2	00	Missing Data/Not applicable	<a href="#">more</a>
V0579	Secondary CDC Case Vehicle-Letter 4 #2	00	Missing Data/Not applicable	<a href="#">more</a>
V0580	SECONDARY CDC CASE VEHICLE - EXTENT #2	0	—	—
V0581	Secondary CDC - Case Vehicle Assoc CDC - CDC #2	9800000	—	—
V0582	Secondary CDC Contacted Vehicle - Impact Speed (kph)	998	Not Applicable	<a href="#">more</a>
V0583	Secondary CDC Contacted Vehicle-estimator	8	Not applicable (no vehicle/no impact)	<a href="#">more</a>
V0584	Secondary CDC Contacted Vehicle - Crush (CM)	998	Not Applicable	<a href="#">more</a>
V0585	Secondary CDC Contacted Vehicle-clock #1	98	Not Applicable	<a href="#">more</a>
V0586	Secondary CDC Contacted Vehicle-Letter 1 #1	00	Missing Data/Not applicable	<a href="#">more</a>
V0587	Secondary CDC Contacted Vehicle-Letter 2 #1	00	Missing Data/Not applicable	<a href="#">more</a>
V0588	Secondary CDC Contacted Vehicle-Letter 3 #1	00	Missing Data/Not applicable	<a href="#">more</a>
V0589	Secondary CDC Contacted Vehicle-Letter 4 #1	00	Missing Data/Not applicable	<a href="#">more</a>
V0590	Secondary CDC Contacted Vehicle - Extent #1	0	—	—
V0591	Secondary CDC - Contacted Vehicle Assoc CDC - CDC	9800000	—	—



	#1			
V0592	Secondary CDC Contacted Vehicle-clock #2	98	Not Applicable	<a href="#">more</a>
V0593	Secondary CDC Contacted Vehicle-Letter 1 #2	00	Missing Data/Not applicable	<a href="#">more</a>
V0594	Secondary CDC Contacted Vehicle-Letter 2 #2	00	Missing Data/Not applicable	<a href="#">more</a>
V0595	Secondary CDC Contacted Vehicle-Letter 3 #2	00	Missing Data/Not applicable	<a href="#">more</a>
V0596	Secondary CDC Contacted Vehicle-Letter 4 #2	00	Missing Data/Not applicable	<a href="#">more</a>
V0597	Secondary CDC Contacted Vehicle - Extent #2	0	—	—
V0598	Secondary CDC - Contacted Vehicle Assoc CDC - CDC #2	9800000	—	—

## Crash Reconstruction

[Back to Top](#)

Variable Number	Variable Name	Code Value	Code Description	Other Options
V0601	Primary Delta-V Case Vehicle-event #	2	Event number 2	<a href="#">more</a>
V0602	Primary Delta V Case Vehicle - Total Delta V	034 kph	kph	<a href="#">more</a>
V0603	Primary delta-V Case Vehicle -LONGITUD	-034	—	—
V0604	Primary delta-V Case Vehicle-Lateral	0006	—	—
V0605	Primary Delta V Case Vehicle - Energy Dissipated by Crush (k	0099	—	—
V0606	Primary Delta-V Case Vehicle-Reconstruction	22	Reconstructed, moderate confidence level	<a href="#">more</a>
V0607	Primary Delta-V Case Vehicle- Mode	2	CDC & detailed damage	<a href="#">more</a>
V0608	Primary Delta V Contacted Vehicle - Total Delta V	888	Not Applicable	<a href="#">more</a>
V0609	Primary delta-V Contacted Vehicle-LONGITUD	8888	—	—
V0610	Primary delta-V Contacted Vehicle-Lateral	8888	—	—
	Primary delta-V Contacted			

V0611	Vehicle - Energy Dissipated by Cru	8888	—	—
V0612	Secondary Delta-V Case Vehicle-event #	1	Event number 1	<a href="#">more</a>
V0613	Secondary Delta V Case Vehicle - Total Delta V	999	Unknown	<a href="#">more</a>
V0614	Secondarydelta-V Case Vehicle -LONGITUD	9999	—	—
V0615	Secondary delta-V Case Vehicle-Lateral	9999	—	—
V0616	Secondary delta-V Case Vehicle - Energy Dissipated by Crush	9999	—	—
V0617	Secondary Delta-V Case Vehicle-Reconstruction	10	Other	<a href="#">more</a>
V0618	Secondary Delta-V Case Vehicle- Mode	5	Not reconstructed	<a href="#">more</a>
V0619	Secondary Delta V Contacted Vehicle - Total Delta V	888	Not applicable	<a href="#">more</a>
V0620	Secondary delta-V Contacted Vehicle-LONGITUD	8888	—	—
V0621	Secondary delta-V Contacted Vehicle-Lateral	8888	—	—
V0622	Secondary delta-V Contacted Vehicle - Energy Dissipated By C	8888	—	—
V0623	Primary EBS Case Vehicle-event #	2	Event number 2	<a href="#">more</a>
V0624	Primary EBS Case Vehicle - Total EBS	034 kph	kph	<a href="#">more</a>
V0625	Primary EBS Case Vehicle - LONGITUD	-034	—	—
V0626	Primary EBS Case Vehicle-Lateral	0006	—	—
V0627	Primary EBS Case Vehicle - Energy Dissipated by Crush (kj)	0099	—	—
V0628	Primary EBS Case Vehicle-Reconstruction	22	Reconstructed, moderate confidence level	<a href="#">more</a>
V0629	Primary EBS Case Vehicle-Mode	2	CDC & detailed damage	<a href="#">more</a>
V0630	Primary EBS Contacted Vehicle - Total EBS	888	Not Applicable	<a href="#">more</a>
	Primary EBS Contacted			

V0631	Vehicle-LONGITUD	8888	—	—
V0632	Primary EBS Contacted Vehicle-Lateral	8888	—	—
V0633	Primary EBS Contact Vehicle - Energy Dissipated by Crush (kj	8888	—	—
V0634	Secondary EBS Case Vehicle-event #	1	Event number 1	<a href="#">more</a>
V0635	Secondary EBS Case Vehicle - Total EBS	999	Unknown	<a href="#">more</a>
V0636	Secondary EBS Case Vehicle -LONGITUD	9999	—	—
V0637	Secondary EBS Case Vehicle-Lateral	9999	—	—
V0638	Secondary EBS Case Vehicle - Energy Dissipated by Crush (kj)	9999	—	—
V0639	Secondary EBS Case Vehicle-Reconstruction	10	Other	<a href="#">more</a>
V0640	Secondary EBS Case Vehicle- Mode	5	Not reconstructed	<a href="#">more</a>
V0641	Secondary EBS Contacted Vehicle - Total EBS	888	Not Applicable	<a href="#">more</a>
V0642	Secondary EBS Contacted Vehicle-LONGITUD	8888	—	—
V0643	Secondary EBS Contacted Vehicle-Lateral	8888	—	—
V0644	Secondary EBS Contact Vehicle - Energy Dissipated by Crush (	8888	—	—
V0645	Specific Event # Case(1)	1	Event number 1	<a href="#">more</a>
V0646	Plane of Impact Case Vehicle (1)	9	Unknown	<a href="#">more</a>
V0647	Direct Damage Length (DDL) - Case Vehicle (1)	999	Unknown	<a href="#">more</a>
V0648	Direct Damage Maximum Crush - Case Vehicle (1)	999	Unknown	<a href="#">more</a>
V0649	Direct and Induced Damage Length in CM	999	Unknown	<a href="#">more</a>
V0650	Field C1 - Case Vehicle (1)	999	Unknown	<a href="#">more</a>
V0651	Field C2 - Case Vehicle (1)	999	Unknown	<a href="#">more</a>
V0652	Field C3 - Case Vehicle (1)	999	Unknown	<a href="#">more</a>
V0653	Field C4 - Case Vehicle (1)	999	Unknown	<a href="#">more</a>

V0654	Field C5 - Case Vehicle (1)	999	Unknown	<a href="#">more</a>
V0655	Field C6 - Case Vehicle (1)	999	Unknown	<a href="#">more</a>
V0656	Direct Damage D Value = The Center of Direct Damage Offset t	+999 cm	Offset (cm)	<a href="#">more</a>
V0657	Specific Event # Case(2)	1	Event number 1	<a href="#">more</a>
V0658	Plane of Impact Case Vehicle (2)	9	Unknown	<a href="#">more</a>
V0659	Direct Damage Length (DDL) - Case Vehicle (2)	999	Unknown	<a href="#">more</a>
V0660	Direct Damage MaximumCrush - Case Vehicle (2)	999	Unknown	<a href="#">more</a>
V0661	Direct and Induced Damage Length in CM	999	Unknown	<a href="#">more</a>
V0662	Field C1 - Case Vehicle (2)	999	Unknown	<a href="#">more</a>
V0663	Field C2 - Case Vehicle (2)	999	Unknown	<a href="#">more</a>
V0664	Field C3 - Case Vehicle (2)	999	Unknown	<a href="#">more</a>
V0665	Field C4 - Case Vehicle (2)	999	Unknown	<a href="#">more</a>
V0666	Field C5 - Case Vehicle (2)	999	Unknown	<a href="#">more</a>
V0667	Field C6 - Case Vehicle (2)	999	Unknown	<a href="#">more</a>
V0668	Direct Damage D Value = The Center of Direct Damage Offset t	+999 cm	cm	<a href="#">more</a>
V0669	Specific Event # Cont(1)	9	Unknown	<a href="#">more</a>
V0670	Plane of Impact Contacted Vehicle(1)	9	Unknown	<a href="#">more</a>
V0671	Direct Damage Length (DDL) - Contacted Vehicle (1)	999	Unknown	<a href="#">more</a>
V0672	Direct Damage Maximum Crush - Contacted Vehicle (1)	999	Unknown	<a href="#">more</a>
V0673	Field L - Contacted Vehicle (1)	999	Unknown	<a href="#">more</a>
V0674	Field C1 - Contacted Vehicle (1)	999	Unknown	<a href="#">more</a>
V0675	Field C2 - Contacted Vehicle (1)	999	Unknown	<a href="#">more</a>
V0676	Field C3 - Contacted Vehicle (1)	999	Unknown	<a href="#">more</a>
V0677	Field C4 - Contacted Vehicle (1)	999	Unknown	<a href="#">more</a>

V0678	Field C5 - Contacted Vehicle (1)	999	Unknown	<a href="#">more</a>
V0679	Field C6 - Contacted Vehicle (1)	999	Unknown	<a href="#">more</a>
V0680	Direct Damage D Value = The Center of Direct Damage Offset t	9999	offset (cm)	<a href="#">more</a>
V0681	Specific Event # Contacted Vehicle (2)	9	Unknown	<a href="#">more</a>
V0682	Plane of Impact Contacted Vehicle(2)	9	Unknown	<a href="#">more</a>
V0683	Direct Damage Length (DDL) - Contacted Vehicle (2)	999	Unknown	<a href="#">more</a>
V0684	Direct Damage Maximum Crush - Contacted Vehicle (2)	999	Unknown	<a href="#">more</a>
V0685	Direct and Induced Damage Length in CM	999	Unknown	<a href="#">more</a>
V0686	Field C1 - Contacted Vehicle (2)	999	Unknown	<a href="#">more</a>
V0687	Field C2 - Contacted Vehicle (2)	999	Unknown	<a href="#">more</a>
V0688	Field C3 - Contacted Vehicle (2)	999	Unknown	<a href="#">more</a>
V0689	Field C4 - Contacted Vehicle (2)	999	Unknown	<a href="#">more</a>
V0690	Field C5 - Contacted Vehicle (2)	999	Unknown	<a href="#">more</a>
V0691	Field C6 - Contacted Vehicle (2)	999	Unknown	<a href="#">more</a>
V0692	Direct Damage D Value = The Center of Direct Damage Offset t	9999	Offset (cm)	<a href="#">more</a>

### Case Vehicle Tires & Rims

[Back to Top](#)

Variable Number	Variable Name	Code Value	Code Description	Other Options
V0701	Left Front Wheel Damaged	1	Yes	<a href="#">more</a>
V0702	Right Front Wheel Damaged	0	No	<a href="#">more</a>
V0703	Right Rear Wheel Damaged	0	No	<a href="#">more</a>
V0704	Left Rear Wheel Damaged	0	No	<a href="#">more</a>

V0705	Left Front Tire Tread Type	4	All Weather	<a href="#">more</a>
V0706	Right Front Tire Tread Type	4	All Weather	<a href="#">more</a>
V0707	Right Rear Tire Tread Type	4	All Weather	<a href="#">more</a>
V0708	Left Rear Tire Tread Type	4	All Weather	<a href="#">more</a>
V0709	Left Front Carcass Construction	3	Radial	<a href="#">more</a>
V0710	Right Front Carcass Construction	3	Radial	<a href="#">more</a>
V0711	Right Rear Carcass Construction	3	Radial	<a href="#">more</a>
V0712	Left Rear Carcass Construction	3	Radial	<a href="#">more</a>
V0713	Left Front Tire Condition Precrash	0	Normal - no pre-crash problems	<a href="#">more</a>
V0714	Right Front Tire Condition Precrash	0	Normal - no pre-crash problems	<a href="#">more</a>
V0715	Right Rear Tire Condition Precrash	0	Normal - no pre-crash problems	<a href="#">more</a>
V0716	Left Rear Tire Condition Precrash	0	Normal - no pre-crash problems	<a href="#">more</a>
V0717	Left Front Tire Condition Postcrash	7	Multiple Conditions	<a href="#">more</a>
V0718	Right Front Tire Condition Postcrash	0	Normal - no damage to tire	<a href="#">more</a>
V0719	Right Rear Tire Condition Postcrash	0	Normal - no damage to tire	<a href="#">more</a>
V0720	Left Rear Tire Condition Postcrash	0	Normal - no damage to tire	<a href="#">more</a>
V0721	Left Front Tire Involvement	0	No	<a href="#">more</a>
V0722	Right Front Tire Involvement	0	No	<a href="#">more</a>
V0723	Right Rear Tire Involvement	0	No	<a href="#">more</a>
V0724	Left Rear Tire Involvement	0	No	<a href="#">more</a>
V0725	Left Front Tire Size	P23570R16	—	—
V0726	Right Front Tire Size	P23570R16	—	—
V0727	Right Rear Tire Size	P23570R16	—	—
V0728	Left Rear Tire Size	P23570R16	—	—
V0729	Left Front Tire Pressure (recorded in psi)	00.0 psi	Actual tire pressure in psi	<a href="#">more</a>
V0730	Right Front Tire Pressure (recorded in psi)	30.0 psi	Actual tire pressure in psi	<a href="#">more</a>
	Right Rear Tire Pressure			

V0731	(recorded in psi)	32.5 psi	Actual tire pressure in psi	<a href="#">more</a>
V0732	Left Rear Tire Pressure (recorded in psi)	31.5 psi	Actual tire pressure in psi	<a href="#">more</a>
V0733	Left Front Tread Depth	12	12/32"	<a href="#">more</a>
V0734	Right Front Tread Depth	12	12/32"	<a href="#">more</a>
V0735	Right Rear Tread Depth	11	11/32"	<a href="#">more</a>
V0736	Left Rear Tread Depth	11	11/32"	<a href="#">more</a>

### Case Vehicle Fuel Tank

[Back to Top](#)

Variable Number	Variable Name	Code Value	Code Description	Other Options
V0801	Propulsive Fuel Type	1	Gasoline	<a href="#">more</a>
V0802	Main Tank Location	222	Within frame/centered laterally - within vertica	<a href="#">more</a>
V0803	Main Filler Cap Location	113	Left of frame laterally - above vertically	<a href="#">more</a>
V0804	Main Tank Material	3	Plastic	<a href="#">more</a>
V0805	Aux Tank Type	8	Not applicable (not equipped)	<a href="#">more</a>
V0806	Aux Tank Location	888	Not applicable (not equipped)	<a href="#">more</a>
V0807	Aux Filler Cap Location	888	Not applicable (not equipped)	<a href="#">more</a>
V0808	Aux Tank Material	8	Not applicable	<a href="#">more</a>

### Case Vehicle Fuel Leakage

[Back to Top](#)

Variable Number	Variable Name	Code Value	Code Description	Other Options
V0901	Fuel Leakage From Crash	0	No	<a href="#">more</a>

### Case Vehicle Fire

[Back to Top](#)

Variable Number	Variable Name	Code Value	Code Description	Other Options
V1001	Fire In Or On Case Vehicle	0	No	<a href="#">more</a>

### Case Vehicle Exterior

[Back to Top](#)

Variable Number	Variable Name	Code Value	Code Description	Other Options
V1101	Hood Latch Released	0	No	<a href="#">more</a>

V1102	Hood Latch Damaged	1	Yes	<a href="#">more</a>
V1103	Hood Latch Jammed	1	Yes	<a href="#">more</a>
V1104	Left Hood Hinge Damaged	1	Yes	<a href="#">more</a>
V1105	Left Hood Hinge Separated	0	No	<a href="#">more</a>
V1106	Right Hood Hinge Damaged	1	Yes	<a href="#">more</a>
V1107	Right Hood Hinge Separated	0	No	<a href="#">more</a>
V1108	Hood Remained On Vehicle	1	Yes	<a href="#">more</a>
V1109	Rear Hood Edge Elevated	1	Yes	<a href="#">more</a>
V1110	Edge Contacted Windshield	0	No	<a href="#">more</a>
V1111	Edge Penetrated Windshield	8	Not applicable	<a href="#">more</a>
V1112	Hood Latch Location	1	Front of Vehicle	<a href="#">more</a>
V1113	Eng/transmissn Mount Separated	0	No	<a href="#">more</a>
V1114	Steering Column Flex Couplng	9	Unknown if equipped	<a href="#">more</a>
V1115	Steering Column Coupling Dam	9	Unknown	<a href="#">more</a>
V1116	Steering Column Coupling Separated	9	Unknown	<a href="#">more</a>
V1117	Eng Comp Telescopng Unit	88	Not currently collected	<a href="#">more</a>
V1118	Compartment Unit's Original/telescoped Length Difference	888	Not currently collected	<a href="#">more</a>
V1119	Left Side Body Mount Separated	8	Not applicable (unitized)	<a href="#">more</a>
V1120	Upper Left A-pillar Sep	0	No	<a href="#">more</a>
V1121	Lower Left A-pillar Sep	4	No separation, but damaged	<a href="#">more</a>
V1122	Upper Left B-pillar Sep	0	No	<a href="#">more</a>
V1123	Lower Left B-pillar Sep	0	No	<a href="#">more</a>
V1124	Upper Left C-pillar Sep	0	No	<a href="#">more</a>
V1125	Lower Left C-pillar Sep	0	No	<a href="#">more</a>
V1126	Upper Left D-pillar Sep	0	No	<a href="#">more</a>
V1127	Lower Left D-pillar Sep	0	No	<a href="#">more</a>
V1128	Left Front Door Opening Cause	05	Body distortion	<a href="#">more</a>
V1129	Left Rear Door Opening Cause	00	Door did not open	<a href="#">more</a>
V1130	Left Front Door Jammed Closed	0	No	<a href="#">more</a>
V1131	Left Rear Door Jammed Closed	0	No	<a href="#">more</a>



V1132	Van Left Rear Door Type	8	Not applicable (not a van)	<a href="#">more</a>
V1133	Left Front Glazing Availability	2	Closed	<a href="#">more</a>
V1134	Left Rear Glazing Availability	2	Closed	<a href="#">more</a>
V1135	Lr2 Glazing Availability	1	Fixed	<a href="#">more</a>
V1136	Left Front Glazing Damage	1	Shattered	<a href="#">more</a>
V1137	Left Rear Glazing Damage	0	No damage	<a href="#">more</a>
V1138	Lr2 Glazing Damage	0	No damage	<a href="#">more</a>
V1139	Rear Door Type	5	Single door	<a href="#">more</a>
V1140	Rear Door Opening Cause	0	Door did not open	<a href="#">more</a>
V1141	Rear Door Jammed Closed	0	No	<a href="#">more</a>
V1142	Rear Glazng Availability	1	Fixed	<a href="#">more</a>
V1143	Rear Glazing Damage	0	No damage	<a href="#">more</a>
V1144	Luggage Partition Damaged	8	Not applicable	<a href="#">more</a>
V1145	Spare Tire Status	8	Not collected	<a href="#">more</a>
V1146	Trailer Hitch Type	0	No hitch	<a href="#">more</a>
V1147	Trailer Type	0	No trailer	<a href="#">more</a>
V1148	Rght Side Body Mount Separated	8	Not applicable (unitized)	<a href="#">more</a>
V1149	Upper Right A-pillar Separated	0	No	<a href="#">more</a>
V1150	Lower Right A-pillar Separated	0	No	<a href="#">more</a>
V1151	Upper Right B-pillar Separated	0	No	<a href="#">more</a>
V1152	Lower Right B-pillar Separated	0	No	<a href="#">more</a>
V1153	Upper Right C-pillar Separated	0	No	<a href="#">more</a>
V1154	Lower Right C-pillar Separated	0	No	<a href="#">more</a>
V1155	Upper Right D-pillar Separated	0	No	<a href="#">more</a>
V1156	Lower Right D-pillar Separated	0	No	<a href="#">more</a>
V1157	Right Front Door Opening Cause	00	Door did not open	<a href="#">more</a>
V1158	Right Rear Door Opening Cause	00	Door did not open	<a href="#">more</a>
V1159	Right Front Door Jammed	0	No	<a href="#">more</a>

	Closed			
V1160	Right Rear Door Jammed Closed	0	No	<a href="#">more</a>
V1161	Van Right-rear Door Type	8	Not applicable (not a van)	<a href="#">more</a>
V1162	Right Front Glazing Availability	2	Closed	<a href="#">more</a>
V1163	Right Rear Glazing Availability	3	Partially open	<a href="#">more</a>
V1164	Rr2 Glazing Availability	1	Fixed	<a href="#">more</a>
V1165	Right Front Glazing Damage	1	Shattered	<a href="#">more</a>
V1166	Right Rear Glazing Damage	0	No damage	<a href="#">more</a>
V1167	Rr2 Glazing Damage	0	No damage	<a href="#">more</a>
V1168	Windshield Cracked	1	Yes	<a href="#">more</a>
V1169	Windshield Broken	0	No <a href="#">Click for Windshield Damage figure</a>	<a href="#">more</a>
V1170	Occupant Cracked/Broke Wndshld	0	No	<a href="#">more</a>
V1171	Bond Separation Extent	0	None	<a href="#">more</a>
V1172	Windshield Code	97	<a href="#">Click for Windshield Mark figure</a>	<a href="#">more</a>
V1173	Did Sun Roof/T-Roof Open	8	Not Applicable	<a href="#">more</a>

### Case Vehicle Steering Column/Rim

[Back to Top](#)

Variable Number	Variable Name	Code Value	Code Description	Other Options
V1201	Steering Wheel Rim Damage	1	Deformed slightly	<a href="#">more</a>
V1202	Number of Steering Wheel Spokes	4	4 spokes	<a href="#">more</a>
V1203	Steering Wheel Spoke Damage	0	None	<a href="#">more</a>
V1204	Steering Wheel Hub Damage	0	None	<a href="#">more</a>
V1205	Steering Wheel Location of Rim Damage	0	No damage	<a href="#">more</a>
V1206	Aftermarket Add-on Device	0	None	<a href="#">more</a>
V1207	Column Tilt Feature	0	Not equipped	<a href="#">more</a>
V1208	Column Swing-away Feature	0	Not equipped	<a href="#">more</a>
V1209	Column Telescoping Feature	0	Not equipped	<a href="#">more</a>
V1210	Wheel Energy Absorb Device	8	Not currently collected	<a href="#">more</a>
V1211	Wheel EA Device's original/damage Dimension	888	Not collected	<a href="#">more</a>

	Difference			
V1212	Column Energy Absorb Device	88	Not collected	<a href="#">more</a>
V1213	Col EA Device's Orig/compressed (or Extruded) Length Diff	888	Not collected	<a href="#">more</a>
V1214	Shear Capsule Separation	888	Not collected	<a href="#">more</a>
V1215	Column Vertical Rotation	0	No apparent rotation	<a href="#">more</a>
V1216	Column Lateral Rotation	0	No apparent rotation	<a href="#">more</a>

## Case Vehicle Intrusion

[Back to Top](#)

Variable Number	Variable Name	Code Value	Code Description	Other Options
V1301	Was Occupant Compartment Intruded	1	Yes <a href="#">Click for Intrusion Worksheet figure</a> <a href="#">Click for Intrusion figure</a>	<a href="#">more</a>
V1302	Was Intrusn Catastrophic	0	No	<a href="#">more</a>
V1303	Intrusion Number #1	01	Intrusion #1	<a href="#">more</a>
V1304	Occupant Space Number(1)	11	First row, Left seat	<a href="#">more</a>
V1305	Intrud Component/obj (1)	03	Toe pan	<a href="#">more</a>
V1306	Associate Event Numb (1)	1	Event #1	<a href="#">more</a>
V1307	Maximum Intrusion X Axis	04 cm	Intrusion (cm)	<a href="#">more</a>
V1308	Maximum Intrusion Y Axis	00 cm	0 cm or No Intrusion	<a href="#">more</a>
V1309	Maximum Intrusion Z Axis	00 cm	0 cm or No Intrusion	<a href="#">more</a>
V1310	Occupant Number #1 (1)	01	Occupant number 1, contact	<a href="#">more</a>
V1311	Injury Number #1 (1)	00	No injury or no intrusion	<a href="#">more</a>
V1312	Occupant Number #2 (1)	00	No contact or no intrusion	<a href="#">more</a>
V1313	Injury Number #2 (1)	00	No injury or no intrusion	<a href="#">more</a>
V1314	Intrusion Number #2	99	Unknown or data not collected	<a href="#">more</a>
V1315	Occupant Space Number(2)	99	Unknown or data not collected	<a href="#">more</a>
V1316	Intrud Component/obj (2)	99	Unknown or data not collected	<a href="#">more</a>
V1317	Associate Event Numb (2)	9	Unknown or data not collected	<a href="#">more</a>
V1318	Maximum Intrusion X Axis	99	Unknown or data not collected	<a href="#">more</a>
V1319	Maximum Intrusion Y Axis	99	Unknown or data not collected	<a href="#">more</a>
V1320	Maximum Intrusion Z Axis	99	Unknown or data not collected	<a href="#">more</a>
V1321	Occupant Number #1 (2)	99	Unknown or data not collected	<a href="#">more</a>
V1322	Injury Number #1 (2)	99	Contact, injury unknown or data not collected	<a href="#">more</a>
V1323	Occupant Number #2 (2)	99	Unknown or data not collected	<a href="#">more</a>

V1324	Injury Number #2 (2)	99	Contact, injury unknown or data not collected	<a href="#">more</a>
V1325	Intrusion Number #3	99	Unknown or data not collected	<a href="#">more</a>
V1326	Occupant Space Number(3)	99	Unknown or data not collected	<a href="#">more</a>
V1327	Intrud Compnent/obj (3)	99	Unknown or data not collected	<a href="#">more</a>
V1328	Associate Event Numb (3)	9	Unknown or data not collected	<a href="#">more</a>
V1329	Maximum Intrusion X Axis	99	Unknown or data not collected	<a href="#">more</a>
V1330	Maximum Intrusion Y Axis	99	Unknown or data not collected	<a href="#">more</a>
V1331	Maximum Intrusion Z Axis	99	Unknown or data not collected	<a href="#">more</a>
V1332	Occupant Number #1 (3)	99	Unknown or data not collected	<a href="#">more</a>
V1333	Injury Number #1 (3)	99	Contact, injury unknown or data not collected	<a href="#">more</a>
V1334	Occupant Number #2 (3)	99	Unknown or data not collected	<a href="#">more</a>
V1335	Injury Number #2 (3)	99	Contact, injury unknown or data not collected	<a href="#">more</a>
V1336	Intrusion Number #4	99	Unknown or data not collected	<a href="#">more</a>
V1337	Occupant Space Number(4)	99	Unknown or data not collected	<a href="#">more</a>
V1338	Intrud Component/obj (4)	99	Unknown or data not collected	<a href="#">more</a>
V1339	Associate Event Numb (4)	9	Unknown or data not collected	<a href="#">more</a>
V1340	Maximum Intrusion X Axis	99	Unknown or data not collected	<a href="#">more</a>
V1341	Maximum Intrusion Y Axis	99	Unknown or data not collected	<a href="#">more</a>
V1342	Maximum Intrusion Z Axis	99	Unknown or data not collected	<a href="#">more</a>
V1343	Occupant Number #1 (4)	99	Unknown or data not collected	<a href="#">more</a>
V1344	Injury Number #1 (4)	99	Contact, injury unknown or data not collected	<a href="#">more</a>
V1345	Occupant Number #2 (4)	99	Unknown or data not collected	<a href="#">more</a>
V1346	Injury Number #2 (4)	99	Contact, injury unknown or data not collected	<a href="#">more</a>
V1347	Intrusion Number #5	99	Unknown or data not collected	<a href="#">more</a>
V1348	Occupant Space Number(5)	99	Unknown or data not collected	<a href="#">more</a>
V1349	Intrud Component/obj (5)	99	Unknown or data not collected	<a href="#">more</a>
V1350	Associate Event Numb (5)	9	Unknown or data not collected	<a href="#">more</a>
V1351	Maximum Intrusion X Axis	99	Unknown or data not collected	<a href="#">more</a>
V1352	Maximum Intrusion Y Axis	99	Unknown or data not collected	<a href="#">more</a>
V1353	Maximum Intrusion Z Axis	99	Unknown or data not collected	<a href="#">more</a>
V1354	Occupant Number #1 (5)	99	Unknown or data not collected	<a href="#">more</a>
V1355	Injury Number #1 (5)	99	Contact, injury unknown or data not collected	<a href="#">more</a>
V1356	Occupant Number #2 (5)	99	Unknown or data not collected	<a href="#">more</a>

V1357	Injury Number #2 (5)	99	Contact, injury unknown or data not collected	<a href="#">more</a>
V1358	Intrusion Number #6	99	Unknown or data not collected	<a href="#">more</a>
V1359	Occupant Space Number(6)	99	Unknown or data not collected	<a href="#">more</a>
V1360	Intrud Component/obj (6)	99	Unknown or data not collected	<a href="#">more</a>
V1361	Associate Event Numb (6)	9	Unknown or data not collected	<a href="#">more</a>
V1362	Maximum Intrusion X Axis	99	Unknown or data not collected	<a href="#">more</a>
V1363	Maximum Intrusion Y Axis	99	Unknown or data not collected	<a href="#">more</a>
V1364	Maximum Intrusion Z Axis	99	Unknown or data not collected	<a href="#">more</a>
V1365	Occupant Number #1 (6)	99	Unknown or data not collected	<a href="#">more</a>
V1366	Injury Number #1 (6)	99	Contact, injury unknown or data not collected	<a href="#">more</a>
V1367	Occupant Number #2 (6)	99	Unknown or data not collected	<a href="#">more</a>
V1368	Injury Number #2 (6)	99	Contact, injury unknown or data not collected	<a href="#">more</a>
V1369	Intrusion Number #7	99	Unknown or data not collected	<a href="#">more</a>
V1370	Occupant Space Number(7)	99	Unknown or data not collected	<a href="#">more</a>
V1371	Intrud Component/obj (7)	99	Unknown or data not collected	<a href="#">more</a>
V1372	Associate Event Numb (7)	9	Unknown or data not collected	<a href="#">more</a>
V1373	Maximum Intrusion X Axis	99	Unknown or data not collected	<a href="#">more</a>
V1374	Maximum Intrusion Y Axis	99	Unknown or data not collected	<a href="#">more</a>
V1375	Maximum Intrusion Z Axis	99	Unknown or data not collected	<a href="#">more</a>
V1376	Occupant Number #1 (7)	99	Unknown or data not collected	<a href="#">more</a>
V1377	Injury Number #1 (7)	99	Contact, injury unknown or data not collected	<a href="#">more</a>
V1378	Occupant Number #2 (7)	99	Unknown or data not collected	<a href="#">more</a>
V1379	Injury Number #2 (7)	99	Contact, injury unknown or data not collected	<a href="#">more</a>
V1380	Intrusion Number #8	99	Unknown or data not collected	<a href="#">more</a>
V1381	Occupant Space Number(8)	99	Unknown or data not collected	<a href="#">more</a>
V1382	Intrud Component/obj (8)	99	Unknown or data not collected	<a href="#">more</a>
V1383	Associate Event Numb (8)	9	Unknown or data not collected	<a href="#">more</a>
V1384	Maximum Intrusion X Axis	99	Unknown or data not collected	<a href="#">more</a>
V1385	Maximum Intrusion Y Axis	99	Unknown or data not collected	<a href="#">more</a>
V1386	Maximum Intrusion Z Axis	99	Unknown or data not collected	<a href="#">more</a>
V1387	Occupant Number #1 (8)	99	Unknown or data not collected	<a href="#">more</a>
V1388	Injury Number #1 (8)	99	Contact, injury unknown or data not collected	<a href="#">more</a>
V1389	Occupant Number #2 (8)	99	Unknown or data not collected	<a href="#">more</a>

V1390	Injury Number #2 (8)	99	Contact, injury unknown or data not collected	<a href="#">more</a>
V1391	Intrusion Number #9	99	Unknown or data not collected	<a href="#">more</a>
V1392	Occupant Space Number(9)	99	Unknown or data not collected	<a href="#">more</a>
V1393	Intrud Component/obj (9)	99	Unknown or data not collected	<a href="#">more</a>
V1394	Associate Event Numb (9)	9	Unknown or data not collected	<a href="#">more</a>
V1395	Maximum Intrusion X Axis	99	Unknown or data not collected	<a href="#">more</a>
V1396	Maximum Intrusion Y Axis	99	Unknown or data not collected	<a href="#">more</a>
V1397	Maximum Intrusion Z Axis	99	Unknown or data not collected	<a href="#">more</a>
V1398	Occupant Number #1 (9)	99	Unknown or data not collected	<a href="#">more</a>
V1399	Injury Number #1 (9)	99	Contact, injury unknown or data not collected	<a href="#">more</a>
V1400	Occupant Number #2 (9)	99	Unknown or data not collected	<a href="#">more</a>
V1401	Injury Number #2 (9)	99	Contact, injury unknown or data not collected	<a href="#">more</a>
V1402	Intrusion Number #10	99	Unknown or data not collected	<a href="#">more</a>
V1403	Occupant Space Number (10)	99	Unknown or data not collected	<a href="#">more</a>
V1404	Intrud Component/obj(10)	99	Unknown or data not collected	<a href="#">more</a>
V1405	Associate Event Numb(10)	9	Unknown or data not collected	<a href="#">more</a>
V1406	Maximum Intrusion X Axis	99	Unknown or data not collected	<a href="#">more</a>
V1407	Maximum Intrusion Y Axis	99	Unknown or data not collected	<a href="#">more</a>
V1408	Maximum Intrusion Z Axis	99	Unknown or data not collected	<a href="#">more</a>
V1409	Occupant Number #1 (10)	99	Unknown or data not collected	<a href="#">more</a>
V1410	Injury Number #1 (10)	99	Contact, injury unknown or data not collected	<a href="#">more</a>
V1411	Occupant Number #2 (10)	99	Unknown or data not collected	<a href="#">more</a>
V1412	Injury Number #2 (10)	99	Contact, injury unknown or data not collected	<a href="#">more</a>
V1413	Intrusion Number (a)	88	Not Applicable	<a href="#">more</a>
V1414	Cause Of Intrusion (a)	8	Not applicable	<a href="#">more</a>
V1415	Intrusion Number (b)	88	Not Applicable	<a href="#">more</a>
V1416	Cause Of Intrusion (b)	8	Not applicable	<a href="#">more</a>
V1417	Intrusion Number (c)	88	Not Applicable	<a href="#">more</a>
V1418	Cause Of Intrusion (c)	8	Not applicable	<a href="#">more</a>
V1419	Intrusion Number (a)	88	Not Applicable	<a href="#">more</a>
V1420	Damaged Component 1 (a)	8	Not Applicable	<a href="#">more</a>
V1421	Damaged Component 2 (a)	8	Not Applicable	<a href="#">more</a>
V1422	Intrusion Number (b)	88	Not Applicable	<a href="#">more</a>
V1423	Damaged Component 1 (b)	8	Not Applicable	<a href="#">more</a>

V1424	Damaged Component 2 (b)	8	Not Applicable	<a href="#">more</a>
V1425	Intrusion Number (c)	88	Not Applicable	<a href="#">more</a>
V1426	Damaged Component 1 (c)	8	Not Applicable	<a href="#">more</a>
V1427	Damaged Component 2 (c)	8	Not Applicable	<a href="#">more</a>
V1428	Intrusion Number (d)	88	Not Applicable	<a href="#">more</a>
V1429	Damaged Component 1 (d)	8	Not Applicable	<a href="#">more</a>
V1430	Damaged Component 2 (d)	8	Not Applicable	<a href="#">more</a>

## Case Vehicle Airbag(s)

[Back to Top](#)

Variable Number	Variable Name	Code Value	Code Description	Other Options
V1501	Driver Airbag Equipped	1	Yes <a href="#">Click for Driver Airbag figure</a>	<a href="#">more</a>
V1502	Right Front Airbag Equip	1	Yes <a href="#">Click for Passenger Airbag figure</a>	<a href="#">more</a>
V1503	Left Rear Airbag Equipped	0	No	<a href="#">more</a>
V1504	Right Rear Airbag Equipped	0	No	<a href="#">more</a>
V1505	Driver Airbag Deployed	1	Yes	<a href="#">more</a>
V1506	Rght Front Airbag Deploy	1	Yes	<a href="#">more</a>
V1507	Left Rear Airbag Deploy	8	Not applicable (no airbag)	<a href="#">more</a>
V1508	Rught Rear Airbag Deploy	8	Not applicable (no airbag)	<a href="#">more</a>
V1509	Driver On/off Switch	0	Not equipped (no switch)	<a href="#">more</a>
V1510	Rght Front On/off Switch	0	Not equipped (no switch)	<a href="#">more</a>
V1511	Left Rear On/off Switch	8	Not applicable (no airbag)	<a href="#">more</a>
V1512	Right Rear On/off Switch	8	Not applicable (no airbag)	<a href="#">more</a>
V1513	Driver Airbag Location	1	Steering wheel	<a href="#">more</a>
V1514	Right Front Airbag Location	3	Mid instrument panel	<a href="#">more</a>
V1515	Left Rear Airbag Location	0	No airbag	<a href="#">more</a>
V1516	Right Rear Airbag Location	0	No airbag	<a href="#">more</a>
V1517	Driver Airbag Condition	0	No damage	<a href="#">more</a>
V1518	Right Front Airbag Condition	0	No damage	<a href="#">more</a>
V1519	Left Rear Airbag Condition	8	Not applicable (not equipped / not deployed)	<a href="#">more</a>
V1520	Right Rear Airbag Condition	8	Not applicable (not equipped / not deployed)	<a href="#">more</a>
V1521	Driver Airbag Tether	1	Yes	<a href="#">more</a>
V1522	Right Front Airbag Tether	0	No	<a href="#">more</a>
V1523	Left Rear Airbag Tether	8	Not applicable	<a href="#">more</a>
V1524	Right Rear Airbag Tether	8	Not applicable	<a href="#">more</a>
V1525	Driver Marked By Contact	1	Yes	<a href="#">more</a>

V1526	Right Front Marked By Contact	0	No	<a href="#">more</a>
V1527	Left Rear Marked By Contact	8	Not applicable (no airbag / not deployed)	<a href="#">more</a>
V1528	Right Rear Marked By Contact	8	Not applicable (no airbag / not deployed)	<a href="#">more</a>
V1529	Driver Module Type	3	U-pattern flaps	<a href="#">more</a>
V1530	Right Front Module Type	8	Other	<a href="#">more</a>
V1531	Left Rear Module Type	8	Other	<a href="#">more</a>
V1532	Right Rear Module Type	8	Other	<a href="#">more</a>
V1533	Driver Module Cover Dam.	1	Flaps not damaged / marked	<a href="#">more</a>
V1534	Right Front Module Cover Dam.	1	Flaps not damaged / marked	<a href="#">more</a>
V1535	Left Rear Module Cover Dam.	0	No airbag	<a href="#">more</a>
V1536	Right Rear Module Cover Dam.	0	No airbag	<a href="#">more</a>
V1537	Driver Airbag Type	1	Original equipment	<a href="#">more</a>
V1538	Right Front Airbag Type	1	Original equipment	<a href="#">more</a>
V1539	Left Rear Airbag Type	0	No airbag	<a href="#">more</a>
V1540	Right Rear Airbag Type	0	No airbag	<a href="#">more</a>
V1541	Driver Airbag Vents	2	Vents present	<a href="#">more</a>
V1542	Right Front Airbag Vents	2	Vents present	<a href="#">more</a>
V1543	Left Rear Airbag Vents	0	No airbag	<a href="#">more</a>
V1544	Right Rear Airbag Vents	0	No airbag	<a href="#">more</a>
V1545	Driver Knee Bolster Equipped	0	No	<a href="#">more</a>
V1546	Right Front Knee Bolster Equipped	0	No	<a href="#">more</a>
V1547	Left Rear Knee Bolster Equipped	0	No	<a href="#">more</a>
V1548	Right Rear Knee Bolster Equipped	0	No	<a href="#">more</a>
V1549	Driver Knee Bolster Deploy	8	Not applicable (no airbag)	<a href="#">more</a>
V1550	Right Front Knee Bolster Deploy	8	Not applicable (no airbag)	<a href="#">more</a>
V1551	Left Rear Knee Bolster Deploy	8	Not applicable (no airbag)	<a href="#">more</a>
V1552	Right Rear Knee Bolster Deploy	8	Not applicable (no airbag)	<a href="#">more</a>
V1553	Left Front Number of Tethers	2	Tethers	<a href="#">more</a>



V1554	Left Front Number of Vents	2	Vents	<a href="#">more</a>
V1555	Right Front Number of Tethers	0	None	<a href="#">more</a>
V1556	Right Front Number of Vents	2	Vents	<a href="#">more</a>
V1557	Left Rear Number of Tethers	8	Not applicable (no airbag)	<a href="#">more</a>
V1558	Left Rear Number of Vents	8	Not applicable (no airbag)	<a href="#">more</a>
V1559	Right Rear Number of Tethers	8	Not applicable (no airbag)	<a href="#">more</a>
V1560	Right Rear Number of Vents	8	Not applicable (no airbag)	<a href="#">more</a>

## Case Vehicle Interior

[Back to Top](#)

Variable Number	Variable Name	Code Value	Code Description	Other Options
V1601	Left Front Door Damaged	0	No	<a href="#">more</a>
V1602	Right Front Door Damaged	0	No	<a href="#">more</a>
V1603	Left Front Hardware Damaged	0	No	<a href="#">more</a>
V1604	Right Front Hardware Damaged	0	No	<a href="#">more</a>
V1605	Left Front Armrest Damaged	0	No	<a href="#">more</a>
V1606	Right Front Armrest Damaged	0	No	<a href="#">more</a>
V1607	Left Front Glass Damaged	1	Yes	<a href="#">more</a>
V1608	Right Front Glass Damaged	1	Yes	<a href="#">more</a>
V1609	Left Rear Door Area Damaged	0	No	<a href="#">more</a>
V1610	Right Rear Door Area Damaged	0	No	<a href="#">more</a>
V1611	Left Rear Hardware Damaged	0	No	<a href="#">more</a>
V1612	Right Rear Hardware Damaged	0	No	<a href="#">more</a>
V1613	Left Rear Armrest Damaged	0	No	<a href="#">more</a>
V1614	Right Rear Armrest Damaged	0	No	<a href="#">more</a>
V1615	Left Rear Glass Damaged	0	No	<a href="#">more</a>
V1616	Right Rear Glass Damaged	0	No	<a href="#">more</a>
V1617	Left Roof Side Rail Damaged	0	No	<a href="#">more</a>
V1618	Right Roof Side Rail Damaged	0	No	<a href="#">more</a>
V1619	Left B-pillar Damaged	0	No	<a href="#">more</a>

V1620	Right B-pillar Damaged	0	No	<a href="#">more</a>
V1621	Left C-pillar Damaged	0	No	<a href="#">more</a>
V1622	Right C-pillar Damaged	0	No	<a href="#">more</a>
V1623	Left D-pillar Damaged	0	No	<a href="#">more</a>
V1624	Right D-pillar Damaged	0	No	<a href="#">more</a>
V1625	Left Headlining Damaged	0	No	<a href="#">more</a>
V1626	Right Headlining Damaged	0	No	<a href="#">more</a>
V1627	Left Roof Structure Damaged	0	No	<a href="#">more</a>
V1628	Right Roof Structure Damaged	0	No	<a href="#">more</a>
V1629	Left T/sun Roof Damaged	8	Not applicable	<a href="#">more</a>
V1630	Right T/sun Roof Damaged	8	Not applicable	<a href="#">more</a>
V1631	Other Left Side Item Damagd	8	Not applicable	<a href="#">more</a>
V1632	Other Right Side Item Damagd	8	Not applicable	<a href="#">more</a>
V1633	Foot Controls Damaged	1	Yes	<a href="#">more</a>
V1634	Ignition Key Damaged	0	No	<a href="#">more</a>
V1635	Rear View Mirror Damaged	1	Yes	<a href="#">more</a>
V1636	Sunvisor/fitting Damaged	0	No	<a href="#">more</a>
V1637	Windshld Molding Damaged	0	No	<a href="#">more</a>
V1638	Left A-pillar Damaged	1	Yes	<a href="#">more</a>
V1639	Right A-pillar Damaged	0	No	<a href="#">more</a>
V1640	Console Damaged	0	No	<a href="#">more</a>
V1641	Transmissn Lever Damaged	0	No	<a href="#">more</a>
V1642	Horn/spoke Shroud Damagd	4	Yes, occupant contact	<a href="#">more</a>
V1643	Upper Panel Damaged	1	Yes	<a href="#">more</a>
V1644	Mid Panel Damaged	1	Yes	<a href="#">more</a>
V1645	Lower Panel Damaged	4	Yes, occupant contact	<a href="#">more</a>
V1646	Ashtray Damaged	0	No	<a href="#">more</a>
V1647	Control Knob/lever Damaged	0	No	<a href="#">more</a>
V1648	Glove Compart Area Damaged	1	Yes	<a href="#">more</a>
V1649	Instruments Damaged	0	No	<a href="#">more</a>
V1650	Park Brake Release Damaged	0	No	<a href="#">more</a>
V1651	Park Brake Pedal Damaged	8	Not applicable	<a href="#">more</a>
V1652	A/c Or Upper Vent Damagd	0	No	<a href="#">more</a>
V1653	Heater Or A/c Duct Damaged	0	No	<a href="#">more</a>
V1654	Radio Damaged	0	No	<a href="#">more</a>
V1655	Other Front Item Damaged	8	Not applicable	<a href="#">more</a>

V1656	Rear Backlight Damaged	0	No	<a href="#">more</a>
V1657	Backlight Header Damaged	0	No	<a href="#">more</a>
V1658	Vertical Console Damaged	0	No	<a href="#">more</a>
V1659	Roof Console Damaged	0	No	<a href="#">more</a>

## Case Vehicle Seats

[Back to Top](#)

Variable Number	Variable Name	Code Value	Code Description	Other Options
V1701	Driver Front Seat Type	05	Bucket	<a href="#">more</a>
V1702	Passenger Front Seat Type	05	Bucket	<a href="#">more</a>
V1703	Driver Seat Mount Type	1	Standard	<a href="#">more</a>
V1704	Passenger Seat Mount Type	1	Standard	<a href="#">more</a>
V1705	Driver Swivel Mech Equipped	0	No	<a href="#">more</a>
V1706	Passenger Swivel Mech Equipped	0	No	<a href="#">more</a>
V1707	Driver Seat Original Equipment	1	Yes	<a href="#">more</a>
V1708	Passenger Seat Original Equipment	1	Yes	<a href="#">more</a>
V1709	Driver Seat/rear Oc Contct	8	Not applicable	<a href="#">more</a>
V1710	Passenger Seat/rear Oc Contct	8	Not applicable	<a href="#">more</a>
V1711	Driver Seat Damage	0	None	<a href="#">more</a>
V1712	Passenger Seat Damage	0	None	<a href="#">more</a>
V1713	Cntr Frnt Armrest Damagd	0	No	<a href="#">more</a>
V1714	Driver Seat-back Rotation	0	None apparent	<a href="#">more</a>
V1715	Passenger Seat-back Rotation	0	None apparent	<a href="#">more</a>
V1716	Driver Seat-back Type	3	Reclining	<a href="#">more</a>
V1717	Passenger Seat-back Type	3	Reclining	<a href="#">more</a>
V1718	Driver Seat-back Lock Type	1	Manual	<a href="#">more</a>
V1719	Passenger Seat-back Lock Type	1	Manual	<a href="#">more</a>
V1720	Driver Seat-back Lock Held	1	Yes	<a href="#">more</a>
V1721	Passenger Seat-back Lock Held	1	Yes	<a href="#">more</a>
V1722	Driver Recliner Mech Held	1	Yes	<a href="#">more</a>
V1723	Passenger Recliner Mech Held.	1	Yes	<a href="#">more</a>

V1724	Driver Head Restraint Type	2	Integral	<a href="#">more</a>
V1725	Passenger Head Restraint Type	2	Integral	<a href="#">more</a>
V1726	Driver Head Rest Removed	8	Not applicable	<a href="#">more</a>
V1727	Passenger Head Rest Removed	8	Not applicable	<a href="#">more</a>
V1728	Driver Head Rest Adjustmnt	8	Not applicable	<a href="#">more</a>
V1729	Passenger Head Rest Adjustmnt	8	Not applicable	<a href="#">more</a>
V1730	Driver Head Rest Damage	0	None	<a href="#">more</a>
V1731	Passenger Head Rest Damage	0	None	<a href="#">more</a>
V1732	Driver Rear Impact Counter	0	None	<a href="#">more</a>
V1733	Passenger Rear Impact Counter	0	None	<a href="#">more</a>
V1734	Driver Seat Adjustmnt Type	2	Power	<a href="#">more</a>
V1735	Passenger Seat Adjustmnt Type	1	Manual	<a href="#">more</a>
V1736	Driver Seat Adjust Provisn	2	4-way	<a href="#">more</a>
V1737	Passenger Seat Adjust Provisn	1	2-way	<a href="#">more</a>
V1738	Driver Seat Adjuster Dam	0	None	<a href="#">more</a>
V1739	Passenger Seat Adjuster Dam	0	None	<a href="#">more</a>
V1740	Driver Seat Adjuster Sep	8	Not applicable	<a href="#">more</a>
V1741	Passenger Seat Adjuster Sep	8	Not applicable	<a href="#">more</a>
V1742	Driver Seat Pre-crash Pos	3	Rearward	<a href="#">more</a>
V1743	Passenger Seat Pre-crash Pos	3	Rearward	<a href="#">more</a>
V1744	Left Rear Seat Type	2	Folding	<a href="#">more</a>
V1745	Rght Rear Seat Type	2	Folding	<a href="#">more</a>
V1746	Left Rear Seat Damage	0	None	<a href="#">more</a>
V1747	Rght Rear Seat Damage	0	None	<a href="#">more</a>
V1748	Cntr Rear Armrest Damagd	8	Not applicable	<a href="#">more</a>
V1749	Left Rear Seat-back Left Lock Equipped	1	Yes	<a href="#">more</a>
V1750	Right Rear Seat-back Left Lock Equipped	0	No	<a href="#">more</a>
V1751	Left Rear Seat-back Left Lock Held	1	Yes	<a href="#">more</a>
V1752	Right Rear Seat-back Left Lock Held	8	Not applicable	<a href="#">more</a>
V1753	Left Rear Seat-back Right Lock Equipped	0	No	<a href="#">more</a>

V1754	Right Rear Seat-back Right Lock Equipped	1	Yes	<a href="#">more</a>
V1755	Left Rear Seat-back Right Lock Held	8	Not applicable	<a href="#">more</a>
V1756	Right Rear Seat-back Right Lock Held	1	Yes	<a href="#">more</a>
V1757	Left 3rd Seat Equipped	0	No	<a href="#">more</a>
V1758	Right 3rd Seat Equipped	0	No	<a href="#">more</a>
V1759	Left 3rd Row Type Seat	0	None	<a href="#">more</a>
V1760	Right 3rd Row Type Seat	0	None	<a href="#">more</a>
V1761	Left 3rd Seat Damage	8	Not applicable	<a href="#">more</a>
V1762	Right 3rd Seat Damage	8	Not applicable	<a href="#">more</a>
V1763	Left 3rd Seat Cushion Dam	8	Not applicable	<a href="#">more</a>
V1764	Right 3rd Seat Cushion Dam	8	Not applicable	<a href="#">more</a>
V1765	Left 3rd Seat L/c Lock Equipped	8	Not applicable	<a href="#">more</a>
V1766	Right 3rd Seat L/c Lock Equipped	8	Not applicable	<a href="#">more</a>
V1767	Left 3rd Seat L/c Lock Held	8	Not applicable	<a href="#">more</a>
V1768	Right 3rd Seat L/c Lock Held	8	Not applicable	<a href="#">more</a>
V1769	Left 3rd Seat Right Lock Equipped	8	Not applicable	<a href="#">more</a>
V1770	Right 3rd Seat Right Lock Equipped	8	Not applicable	<a href="#">more</a>
V1771	Left 3rd Seat Right Lock Held	8	Not applicable	<a href="#">more</a>
V1772	Right 3rd Seat Right Lock Held	8	Not applicable	<a href="#">more</a>
V1773	Rear Head Restraints	1	Equipped	<a href="#">more</a>

### Case Vehicle Side Airbag(s)

[Back to Top](#)

Variable Number	Variable Name	Code Value	Code Description	Other Options
V1801	Side Airbag Equipped	0	Not equipped	<a href="#">more</a>
V1802	Left Front Seatback Mount Deploy	0	Not equipped	<a href="#">more</a>
V1803	Right Front Seatback Mount Deploy	0	Not equipped	<a href="#">more</a>
V1804	Left Rear Seatback Mount Deploy	0	Not equipped	<a href="#">more</a>

V1805	Right Rear Seatback Mount Deploy	0	Not equipped	<a href="#">more</a>
V1806	Left Front Seatback Module Type	0	Not equipped	<a href="#">more</a>
V1807	Right Front Seatback Module Type	0	Not equipped	<a href="#">more</a>
V1808	Left Rear Seatback Module Type	0	Not equipped	<a href="#">more</a>
V1809	Right Rear Seatback Module Type	0	Not equipped	<a href="#">more</a>
V1810	Left Front Seatback Airbag Type	0	Not equipped	<a href="#">more</a>
V1811	Right Front Seatback Airbag Type	0	Not equipped	<a href="#">more</a>
V1812	Left Rear Seatback Airbag Type	0	Not equipped	<a href="#">more</a>
V1813	Right Rear Seatback Airbag Type	0	Not equipped	<a href="#">more</a>
V1814	Left Front Seatback Airbag Cond.	0	Not equipped	<a href="#">more</a>
V1815	Right Front Seatback Airbag Cond.	0	Not equipped	<a href="#">more</a>
V1816	Left Rear Seatback Airbag Cond.	0	Not equipped	<a href="#">more</a>
V1817	Right Rear Seatback Airbag Cond.	0	Not equipped	<a href="#">more</a>
V1818	Left Front Door-mounted Deploy	0	Not equipped	<a href="#">more</a>
V1819	Right Front Door-mounted Deploy	0	Not equipped	<a href="#">more</a>
V1820	Left Rear Door-mounted Deploy	0	Not equipped	<a href="#">more</a>
V1821	Right Rear Door-mounted Deploy	0	Not equipped	<a href="#">more</a>
V1822	Left Front Door Module Type	0	Not equipped	<a href="#">more</a>
V1823	Right Front Door Module Type	0	Not equipped	<a href="#">more</a>
V1824	Left Rear Door Module Type	0	Not equipped	<a href="#">more</a>
V1825	Right Rear Door Module Type	0	Not equipped	<a href="#">more</a>
V1826	Left Front Door Airbag Type	0	Not equipped	<a href="#">more</a>
	Right Front Door Airbag	0		

V1827	Type		Not equipped	<a href="#">more</a>
V1828	Left Rear Door Airbag Type	0	Not equipped	<a href="#">more</a>
V1829	Right Rear Door Airbag Type	0	Not equipped	<a href="#">more</a>
V1830	Left Front Door Airbag Condition	0	Not equipped	<a href="#">more</a>
V1831	Right Front Door Airbag Condition	0	Not equipped	<a href="#">more</a>
V1832	Left Rear Door Airbag Condition	0	Not equipped	<a href="#">more</a>
V1833	Right Rear Door Airbag Condition	0	Not equipped	<a href="#">more</a>
V1834	Left Front Roof Mounted Deploy	0	Not equipped	<a href="#">more</a>
V1835	Right Front Roof Mounted Deploy	0	Not equipped	<a href="#">more</a>
V1836	Left Rear Roof Mounted Deploy	0	Not equipped	<a href="#">more</a>
V1837	Right Rear Roof Mounted Deploy	0	Not equipped	<a href="#">more</a>
V1838	Left Front Roof Module Type	0	Not equipped	<a href="#">more</a>
V1839	Right Front Roof Module Type	0	Not equipped	<a href="#">more</a>
V1840	Left Rear Roof Module Type	0	Not equipped	<a href="#">more</a>
V1841	Right Rear Roof Module Type	0	Not equipped	<a href="#">more</a>
V1842	Left Front Roof Airbag Type	0	Not equipped	<a href="#">more</a>
V1843	Right Front Roof Airbag Type	0	Not equipped	<a href="#">more</a>
V1844	Left Rear Roof Airbag Type	0	Not equipped	<a href="#">more</a>
V1845	Right Rear Roof Airbag Type	0	Not equipped	<a href="#">more</a>
V1846	Left Front Roof Airbag Condition	0	Not equipped	<a href="#">more</a>
V1847	Right Front Roof Airbag Condition	0	Not equipped	<a href="#">more</a>
V1848	Left Rear Roof Airbag Condition	0	Not equipped	<a href="#">more</a>
V1849	Right Rear Roof Airbag Condition	0	Not equipped	<a href="#">more</a>

**EDR -- Event Data Recorder**

[Back to Top](#)

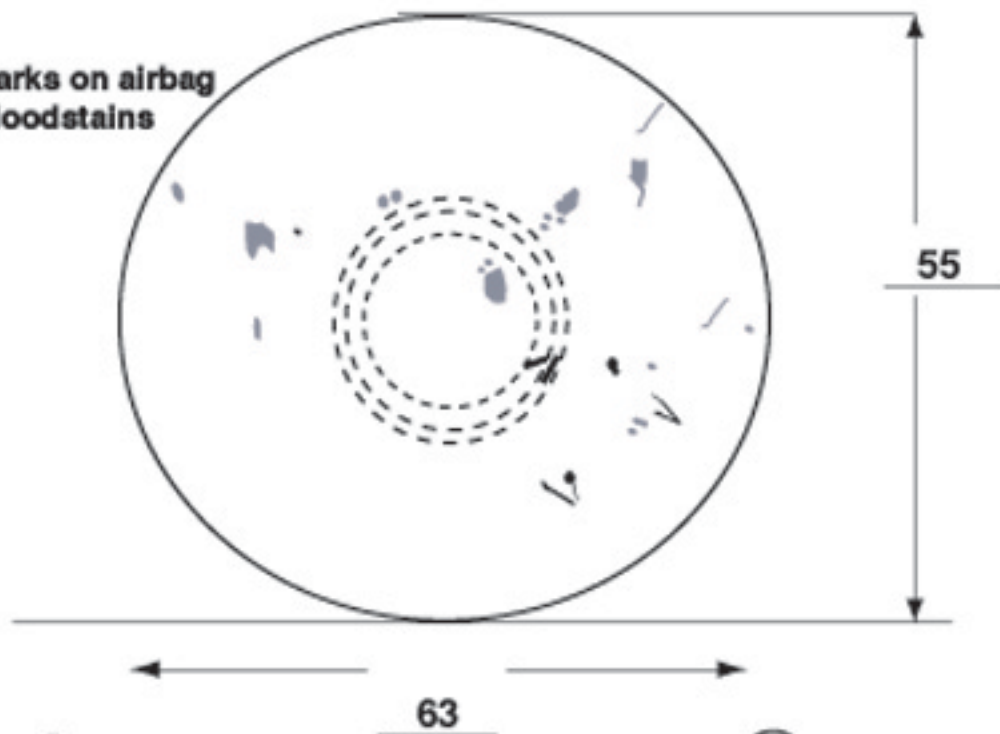
Variable		Code		Other
----------	--	------	--	-------

<b>Number</b>	<b>Variable Name</b>	<b>Value</b>	<b>Code Description</b>	<b>Options</b>
V1901	Case Vehicle EDR Equipped	0	Not equipped	<a href="#">more</a>
V1902	Type Of File Recovered	0	Not equipped	<a href="#">more</a>
V1903	EDR Pre-crash Braking	0	Not equipped	<a href="#">more</a>
V1904	Event Data Recorder (EDR) Pre-impact Speed	91	Not equipped	<a href="#">more</a>
V1905	EDR Driver Belt Status	0	Not equipped	<a href="#">more</a>
V1906	EDR Right Front Belt Status	0	Not equipped	<a href="#">more</a>
V1907	Right Front Airbag Suppressed	0	Not equipped	<a href="#">more</a>
V1908	Sir Warning Lamp Status	0	Not equipped	<a href="#">more</a>
V1909	Time Between Near Deployment and Deployment (in Seconds)	0	Not equipped	<a href="#">more</a>
V1910	Time Between Algorithm Enable and Deployment (in ms)	000	Not equipped	<a href="#">more</a>
V1911	Maximum Recorded Longitudinal Velocity Change (mph))	000	No time / not collected	<a href="#">more</a>
V1912	Maximum Recorded Lateral Velocity Change (mph))	000	No time / not collected	<a href="#">more</a>
V1913	More Than One Deploy?	0	Not equipped	<a href="#">more</a>



Driver Airbag

All marks on airbag are bloodstains



Vents:  Y  N

if yes, how many: 2

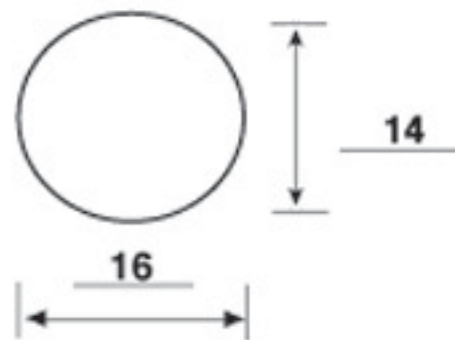
@11 & 1 o'clock

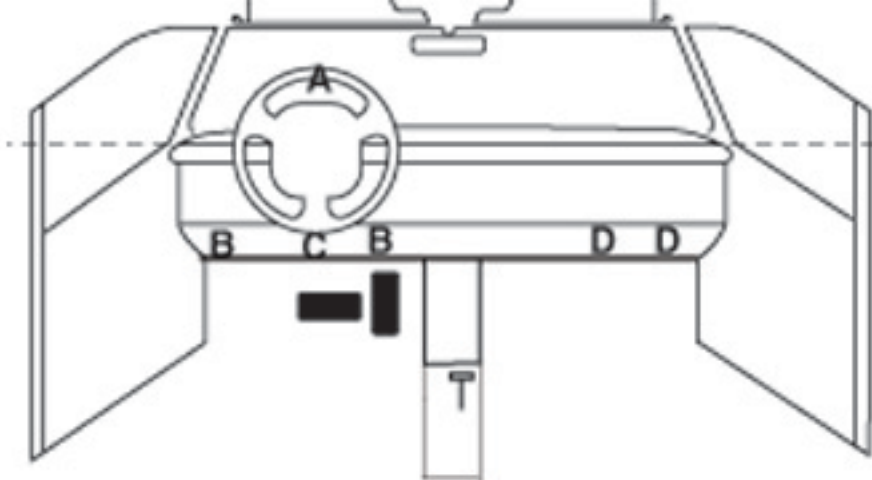
Tethers:  Y  N

if yes, how many: 2

Driver Airbag Door

Single Door





**A= Steering-wheel rim, deformation**

**B= Knee bolster, scuffmarks**

**C = Knee bolster, crack**

**D = Glove box door, scuffmarks**

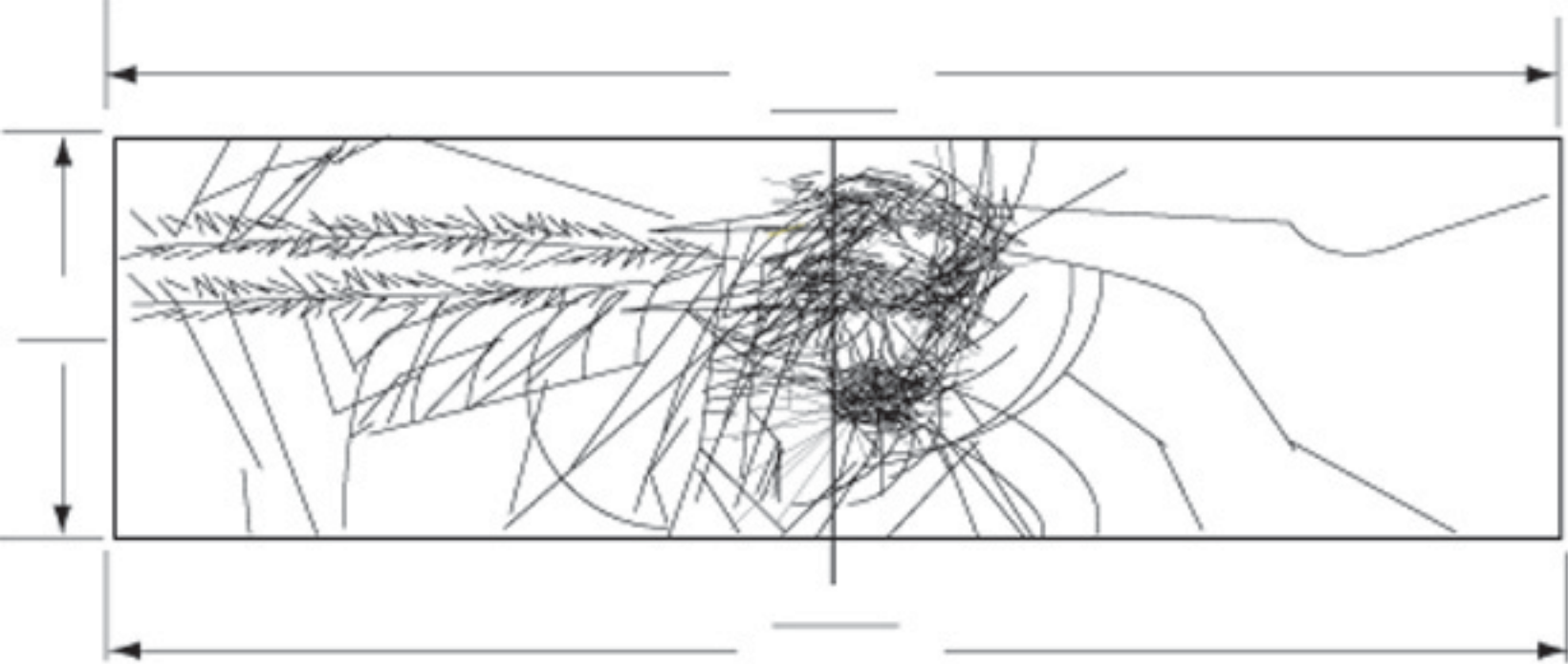
1 = Definitely 2 = Probably 3 = Possible

INTRUSION IT-1

Location of Intrusion	Intruded Component	(All Measurements Are in Centimeters)				Dominant Crush Direction
		Comparison Value	–	Intruded Value	= Intrusion	
11	Toe pan	70	–	66	= 4	to rear

OCCUPANT CONTACT WORKSHEET

Contact	Interior Component Contacted	Occupant No. if Known	Body Region if Known	Supporting Physical Evidence	Confidence Level of Contact Point
A	Steering-wheel rim	1	Chest	Deformation	1
B	Knee bolster	1	Knee	Scuffmarks	1
C	Knee bolster	1	Knee	Crack	1
D	Glove box door	2	Knee	Scuffmarks	1
E					
F					
G					
H					
I					
J					
K					
L					
M					



WINDSHIELD MARK ON CASE VEHICLE:



**SAFEGUARD**

DOT-21 CC M54 T AS1 02



43R-000270

4

1

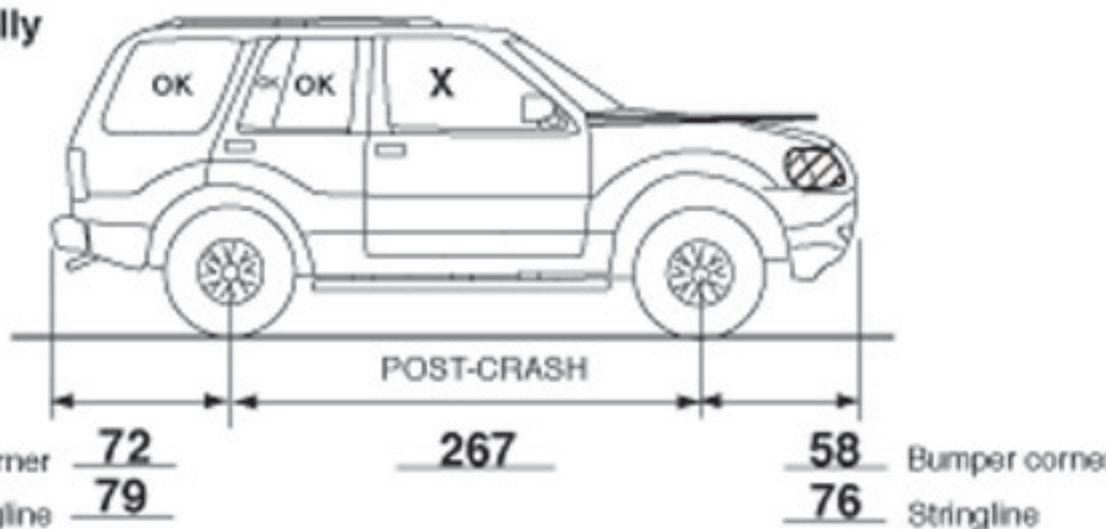
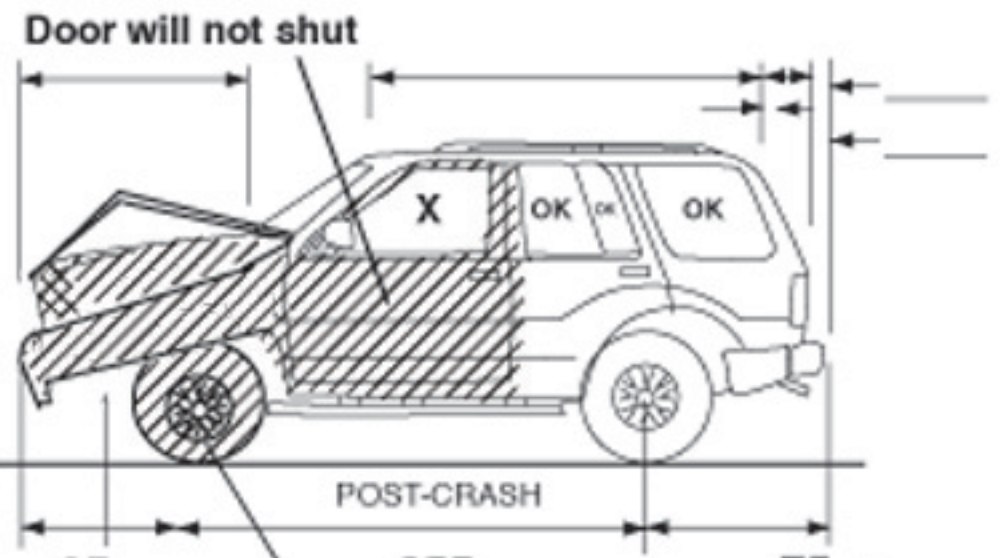
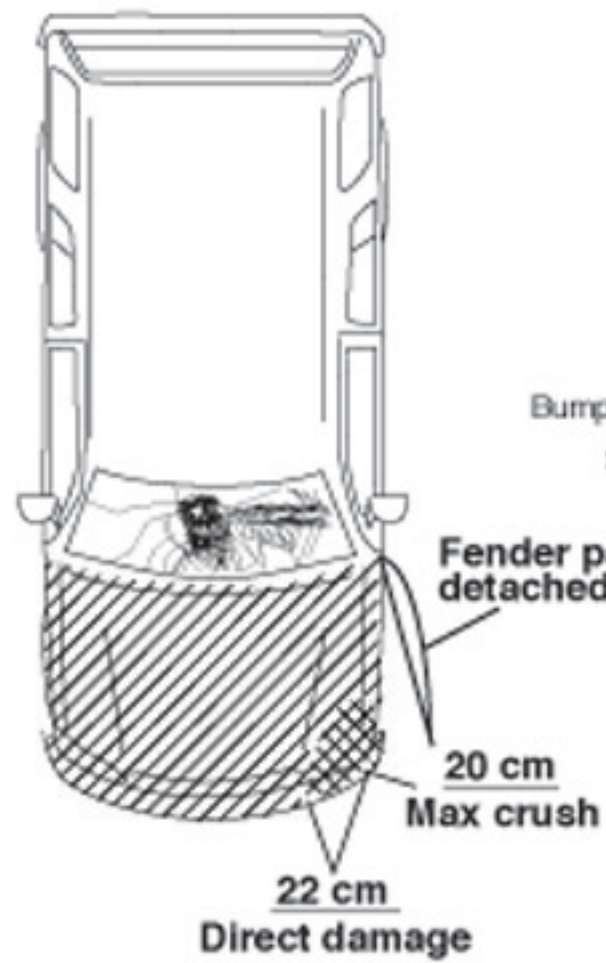
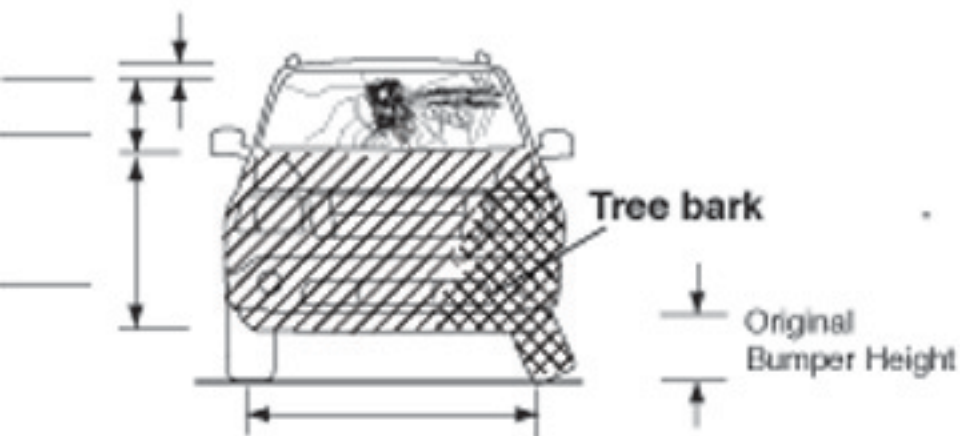
1

4

L

2

MEASUREMENTS IN CENTIMETERS

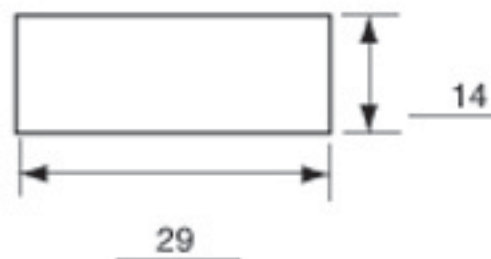


### Passenger Airbag



### Passenger Airbag Door

Single Door



Vents:  Y  N

if yes, how many: 2

Vents @ 10 and 2 o'clock

Tethers: Y  N

if yes, how many: \_\_\_\_\_









**WARNING**  
DO NOT USE  
SUN VISOR











**WARNING**  
DO NOT SMOKING  
WHEN AIR BAGS ARE  
INSTALLED

**WARNING**  
DO NOT DRINK  
ALCOHOL  
WHEN DRIVING















**WARNING**  
DO NOT USE TO PROTECT  
THE GLASS FROM SHATTERING











SRS AIRB

Jeep





































Jeep

SRS  
AIRBAG

RES • ACCEL

CANCEL

CRUISE



SRS  
AIRBAG

















263179

Jeep

4x4

GOODYEAR

WILRANGER

3.7L



263179

Jeep









263179 X 3m  
Jeep

DANGER



263179 X 3m  
Jeep











26299  
Jeep

BLIZZAK



263179 X 3M  
Jeep







9 X 3m  
Jeep



263179 X 3m  
Jeep







263179 X 3m

Jeep







2366

2366

LIBERTY

WRANGLER

SR-A

SR-A

2366



263179 X 3m  
Jeep



263179 X 3m

Jeep

















TRV 33016754-1 (19)