

PUBLIC ROADS ADMINISTRATION
FEDERAL WORKS AGENCY

INFORMATIONAL MEMORANDUM

DATE: NOVEMBER 28, 1947

SUBJECT: TRAFFIC VOLUME TRENDS

On the basis of preliminary figures, traffic on all rural roads and city streets during October 1947 was higher than in any previous October. Increases were found on main highways, local roads, and city streets as follows:

	Percentage change from		
	1941	1943	1946
Main roads	+16.6	+94.4	+11.5
Local roads	+11.4	+78.8	+ 2.5
City streets	+12.2	+60.9	+ 8.8
Average	+13.7	+74.7	+ 8.8

October 1947 rural traffic volumes and changes by geographic regions were as follows:

	Rural traffic in vehicle miles October 1947 (millions)	Percentage change from		
		1941	1943	1946
Eastern regions	5,249	+ 5.3	+86.5	+10.6
Central regions	8,569	+17.1	+92.9	+ 9.3
Western regions	2,933	+30.5	+87.1	+ 5.1
United States total	16,751	+15.1	+89.9	+ 8.9

H. S. FAIRBANK, DEPUTY COMMISSIONER
PUBLIC ROADS ADMINISTRATION

Attachments

... of the ...
... and ...
... and ...

...
...
...
...
...
...

... of the ...

...
...
...
...

...
...
...
...

...
...

...
...
...

...
...
...

...
...
...

...
...

...
...
...

...

TABLE 1.--PRELIMINARY SUMMARY OF AUTOMATIC TRAFFIC RECORDER DATA FOR OCTOBER 1947 INCLUDING 649 STATIONS IN 48 STATES¹

Type of highway and State	Number of stations	Traffic volume percentage change from Oct. 1946	Type of highway and State	Number of stations	Traffic volume percentage change from Oct. 1946
<i>STATE HIGHWAYS</i>			<i>STATE HIGHWAYS (Continued)</i>		
Alabama	5	+14.9	Texas	81	+12.8
Arizona	5	+ 6.8	Utah	8	+14.5
Arkansas	16	+13.6	Vermont	7	+17.3
California	5	+ 1.2	Washington	9	+ 9.0
Colorado	4	+11.9	West Virginia	11	+16.8
Connecticut	16	+16.1	Wisconsin	9	+14.2
Delaware	3	+12.3	Wyoming	4	+12.8
Florida	17	+ 8.6			
Georgia	7	+ 7.2	<i>TOTAL - 46 STATES</i>	616	+11.1
Idaho	8	+11.7	<i>LOCAL HIGHWAYS</i>		
Illinois	4	+12.9	Alabama	2	- 0.2
Indiana	21	+12.1	Connecticut	3	+ 8.5
Iowa	26	+13.0	Delaware	2	+ 1.1
Kansas	13	+16.2	Georgia	3	+ 4.9
Kentucky	11	+12.3	Indiana	1	+ 5.7
Louisiana	8	- 7.0	Iowa	7	- 5.9
Maine	10	+ 6.8	Maryland	1	-11.2
Maryland	17	+ 9.6	Michigan	2	+ 7.8
Massachusetts	9	+ 8.7	Missouri	2	+19.9
Michigan	26	+12.6	Montana	2	+20.7
Minnesota	27	+ 9.6	Nebraska	1	+11.9
Mississippi	10	+11.1	North Dakota	2	+46.6
Missouri	25	+10.0	Ohio	2	- 0.8
Montana	10	+20.7	Oregon	1	-10.8
Nebraska	10	+13.4	Rhode Island	1	+34.8
Nevada	16	+ 7.8	Wisconsin	1	- 2.6
New Hampshire	15	+ 5.0	<i>TOTAL - 16 STATES</i>	33	+ 2.5
New Jersey	4	+11.6	<i>ALL HIGHWAYS</i>		
New Mexico	14	+11.3	<i>46 STATES</i>	649	+ 8.9
New York	3	+13.1	<i>3 EASTERN REGIONS</i>	179	+10.6
North Carolina	20	+ 8.2	<i>4 CENTRAL REGIONS</i>	381	+ 9.3
North Dakota	10	+22.8	<i>2 WESTERN REGIONS</i>	89	+ 5.1
Ohio	21	+18.3			
Oklahoma	20	+ 6.7			
Oregon	3	+27.4			
Pennsylvania	28	+17.9			
Rhode Island	2	+24.1			
South Dakota	10	+ 3.1			
Tennessee	8	+15.7			

¹Includes all States except South Carolina and Virginia.

Year	Month	Day	Time	Location	Remarks
1950	Jan	1	10:00
1950	Jan	2	10:00
1950	Jan	3	10:00
1950	Jan	4	10:00
1950	Jan	5	10:00
1950	Jan	6	10:00
1950	Jan	7	10:00
1950	Jan	8	10:00
1950	Jan	9	10:00
1950	Jan	10	10:00
1950	Jan	11	10:00
1950	Jan	12	10:00
1950	Jan	13	10:00
1950	Jan	14	10:00
1950	Jan	15	10:00
1950	Jan	16	10:00
1950	Jan	17	10:00
1950	Jan	18	10:00
1950	Jan	19	10:00
1950	Jan	20	10:00
1950	Jan	21	10:00
1950	Jan	22	10:00
1950	Jan	23	10:00
1950	Jan	24	10:00
1950	Jan	25	10:00
1950	Jan	26	10:00
1950	Jan	27	10:00
1950	Jan	28	10:00
1950	Jan	29	10:00
1950	Jan	30	10:00
1950	Jan	31	10:00

TABLE 2.--REVISED SUMMARY OF AUTOMATIC TRAFFIC RECORDER DATA FOR
SEPTEMBER 1947 INCLUDING 662 STATIONS IN 47 STATES¹

Region and State	Number of stations	Traffic volume percentage change from Sept. 1946	Region and State	Number of stations	Traffic volume percentage change from Sept. 1946
<i>NEW ENGLAND</i>			<i>EAST SOUTH CENTRAL</i>		
Connecticut	19	+13.0	Alabama	7	+11.7
Maine	10	+ 8.6	Kentucky	7	+ 8.7
Massachusetts	9	+ 7.2	Mississippi	10	+ 8.3
New Hampshire	15	+ 5.1	Tennessee	8	+13.8
Rhode Island	3	+ 5.2	Subtotal	32	+10.3
Vermont	10	+11.7	<i>WEST SOUTH CENTRAL</i>		
Subtotal	66	+ 9.7	Arkansas	17	+ 9.9
<i>MIDDLE ATLANTIC</i>			Louisiana	8	+ 5.7
New Jersey	4	+19.6	Oklahoma	20	+ 6.1
New York	2	+ 7.8	Texas	82	+13.6
Pennsylvania	28	+14.3	Subtotal	127	+11.0
Subtotal	34	+14.9	<i>MOUNTAIN</i>		
<i>SOUTH ATLANTIC</i>			Arizona	5	+ 8.9
Delaware	5	+ 5.4	Colorado	6	+ 7.1
Maryland	18	+ 5.6	Idaho	8	+17.4
Virginia	2	+11.8	Montana	13	+18.8
West Virginia	11	+15.4	Nevada	16	+ 9.9
Subtotal north portion	36	+ 8.1	New Mexico	14	+11.1
Florida	19	+ 9.2	Utah	11	+10.2
Georgia	10	+ 9.0	Wyoming	5	+ 7.6
North Carolina	18	+ 7.5	Subtotal	78	+11.1
Subtotal south portion	47	+ 8.4	<i>PACIFIC</i>		
Subtotal region	83	+ 8.2	California	6	- 2.1
<i>EAST NORTH CENTRAL</i>			Oregon	5	+15.9
Illinois	5	+19.8	Washington	9	+ 7.4
Indiana	22	+ 6.3	Subtotal	20	+ 4.7
Michigan	28	+11.9	<i>TOTAL ALL STATES</i> ²	662	+ 7.8
Ohio	22	+11.9	<i>STATE HIGHWAYS</i> ²	628	+ 9.3
Wisconsin	10	+ 8.5	<i>LOCAL HIGHWAYS</i>	34	+ 4.1
Subtotal	87	+10.5	<i>3 EASTERN REGIONS</i>	183	+ 7.2
<i>WEST NORTH CENTRAL</i>			<i>4 CENTRAL REGIONS</i>	381	+ 9.3
Iowa	33	+14.4	<i>2 WESTERN REGIONS</i>	98	+ 4.9
Kansas	14	+ 9.6			
Minnesota	27	+12.2			
Missouri	27	+ 9.0			
Nebraska	12	+16.0			
North Dakota	12	+13.9			
South Dakota	10	+12.8			
Subtotal	135	+11.9			

¹Combined State and local highways.

²Includes all States except the following: South Carolina.

DATE	DESCRIPTION	AMOUNT	BALANCE
1950-01-01	Opening Balance		100.00
1950-01-15	Deposit	50.00	150.00
1950-02-01	Withdrawal	25.00	125.00
1950-02-15	Deposit	75.00	200.00
1950-03-01	Withdrawal	30.00	170.00
1950-03-15	Deposit	40.00	210.00
1950-04-01	Withdrawal	15.00	195.00
1950-04-15	Deposit	60.00	255.00
1950-05-01	Withdrawal	20.00	235.00
1950-05-15	Deposit	80.00	315.00
1950-06-01	Withdrawal	45.00	270.00
1950-06-15	Deposit	35.00	305.00
1950-07-01	Withdrawal	10.00	295.00
1950-07-15	Deposit	55.00	350.00
1950-08-01	Withdrawal	35.00	315.00
1950-08-15	Deposit	45.00	360.00
1950-09-01	Withdrawal	25.00	335.00
1950-09-15	Deposit	65.00	400.00
1950-10-01	Withdrawal	40.00	360.00
1950-10-15	Deposit	50.00	410.00
1950-11-01	Withdrawal	15.00	395.00
1950-11-15	Deposit	70.00	465.00
1950-12-01	Withdrawal	30.00	435.00
1950-12-15	Deposit	40.00	475.00
1951-01-01	Closing Balance		475.00

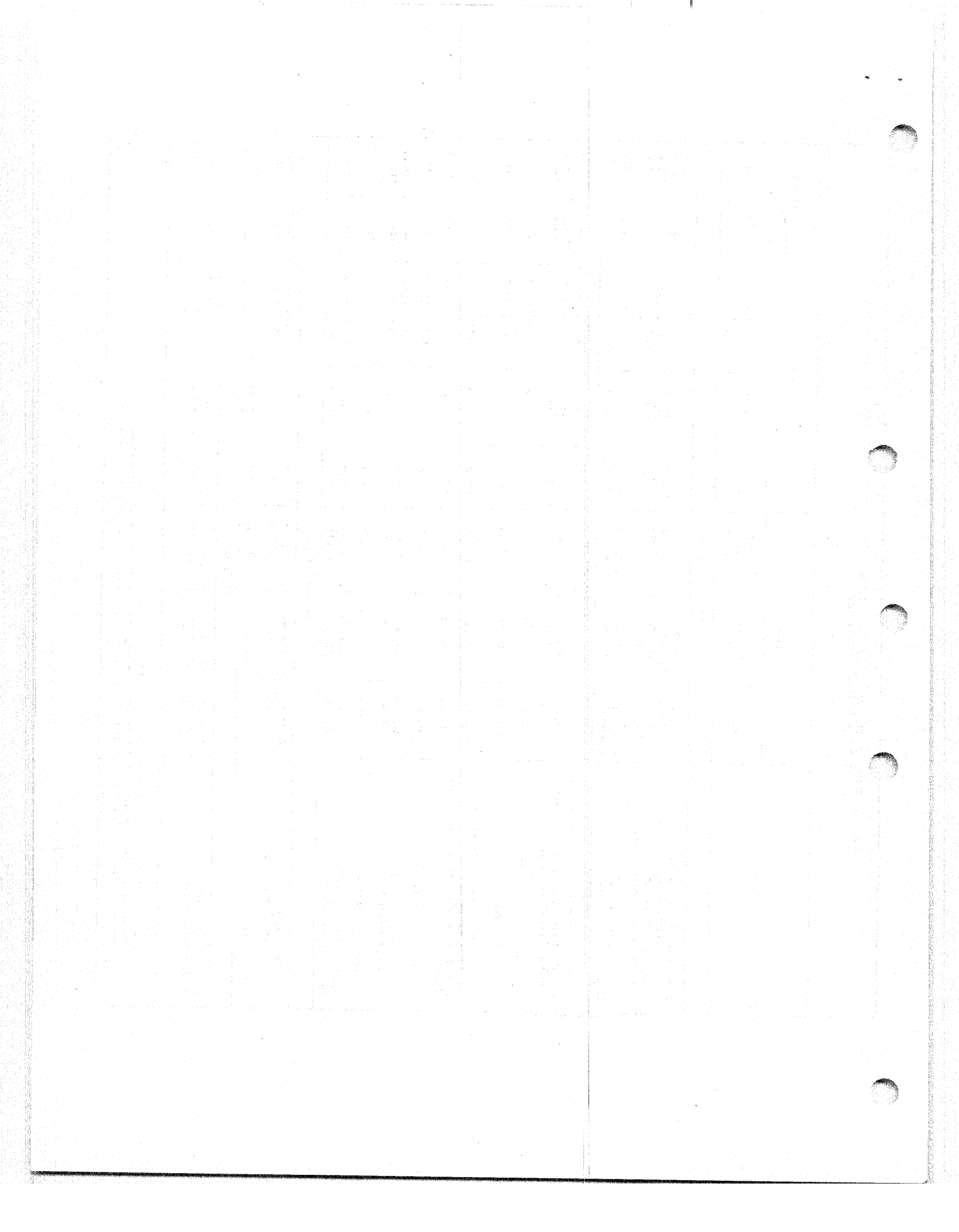
TABLE 3.--NUMBER OF VEHICLES, CLASSIFIED BY TYPES, USING TOLL FACILITIES IN OCTOBER 1947 COMPARED WITH THOSE IN OCTOBER 1946 AND 1941.

Facilities	1947			Percentage change from 1946			Percentage change from 1941		
	Total	Passenger cars	Trucks and busses	Total	Passenger cars	Trucks and busses	Total	Passenger cars	Trucks and busses
<i>EASTERN REGIONS</i>									
3 in the New England States	64,717	58,089	6,628	+ 4.9	+ 5.7	- 1.4	+ 9.0	+ 5.1	+61.6
15 in the Middle Atlantic States	12,495,083	10,572,571	1,622,512	+15.7	+15.9	+14.4	+42.0	+39.9	+57.3
Pennsylvania Turnpike ¹	280,091	224,603	55,488	+30.4	+30.8	+28.5	+29.9	+22.1	+75.4
5 in the South Atlantic States	436,320	338,226	98,094	+13.8	+12.6	+18.2	+19.3	+15.5	+34.8
TOTAL - 24 facilities ²	12,976,211	11,193,489	1,782,722	+15.9	+16.0	+15.0	+40.6	+38.4	+56.4
TOTAL - 25 facilities	13,616,493	11,767,268	1,849,225	+16.3	+16.5	+15.1	--	--	--
<i>CENTRAL REGIONS</i>									
3 on the Great Lakes Canadian Border ³	379,284	360,019	19,265	+16.2	+15.9	+21.5	+129.8	+132.0	+95.1
1 in the Great Lakes Region	29,939	27,229	2,710	+22.7	+25.1	+ 2.9	+61.6	+59.9	+81.3
Subtotal - 4 facilities	409,223	387,248	21,975	+16.7	+16.5	+18.9	+122.9	+124.8	+93.9
5 on the Ohio River	388,861	321,622	67,239	+13.9	+13.0	+18.4	+24.7	+22.0	+39.4
7 on the Mississippi and St. Croix Rivers St. Louis and north	754,493	640,241	114,252	+20.3	+18.8	+29.3	+12.0	+11.0	+17.8
1 on the Mississippi River south of St. Louis	18,880	14,179	4,701	+17.3	+22.4	+ 4.3	+57.5	+59.3	+52.5
Subtotal - 8 facilities	973,373	854,420	118,953	+20.2	+18.9	+28.1	+12.8	+11.7	+18.9
3 on the Missouri River	175,616	140,958	34,658	+11.3	+ 9.9	+17.3	+52.6	+57.9	+34.2
2 in the Missouri River area	6,697	5,630	1,067	+ 6.3	+ 3.4	+25.4	+70.5	+63.7	+118.6
Subtotal - 5 facilities	182,313	146,588	35,725	+11.1	+ 9.6	+17.5	+63.2	+58.1	+35.7
TOTAL - 22 facilities ²	1,753,770	1,509,878	243,892	+16.9	+16.0	+22.9	+34.9	+35.5	+31.1
TOTAL - 27 facilities	2,032,405	1,739,319	293,086	+16.9	+15.9	+23.2	--	--	--
<i>WESTERN REGIONS</i>									
1 in California	2,202,344	1,983,969	218,375	+ 6.5	+ 6.4	+ 7.6	+29.4	+26.8	+58.8
3 in the Oregon-Washington area	375,571	327,795	47,776	+ 8.3	+ 8.5	+ 6.6	+89.9	+86.9	+113.7
TOTAL - 4 facilities	2,577,915	2,311,764	266,151	+ 6.8	+ 6.7	+ 7.4	+35.7	+32.9	+66.4
<i>UNITED STATES</i>									
TOTAL - 50 facilities ²	17,307,896	15,015,131	2,292,765	+14.5	+14.5	+14.8	+39.2	+37.2	+54.3
TOTAL - 56 facilities	18,226,813	15,818,351	2,408,462	+14.9	+14.9	+15.1	--	--	--

¹Number of vehicles, those using any portion of the facility.

²These facilities have comparative data for 1947, 1946, and 1941 and are included in the larger total below.

³One of these facilities is in Western New York and therefore is related to similar facilities in the Central States



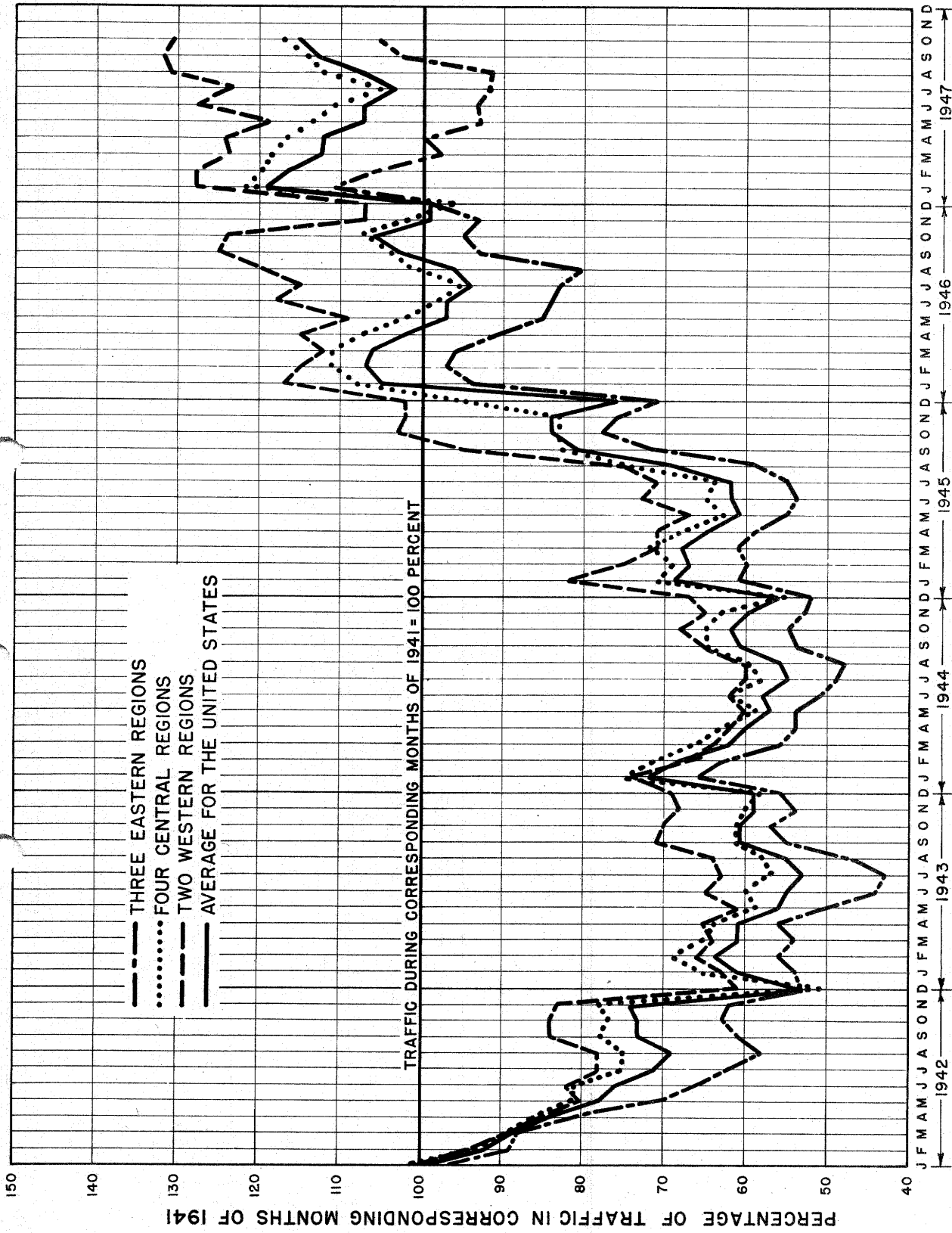
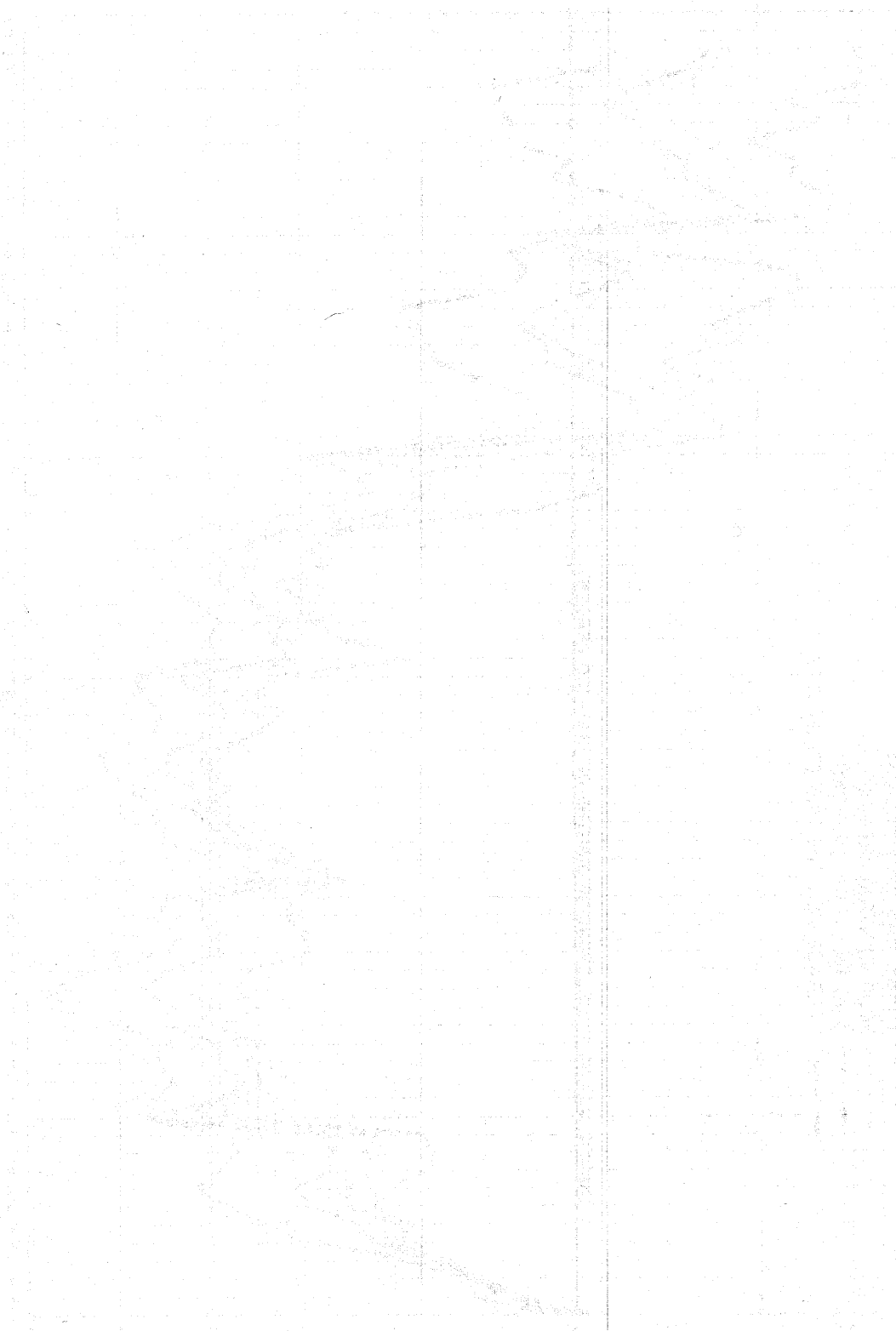


FIGURE I--PERCENTAGE RELATIONS OF RURAL TRAFFIC BY MONTHS IN 1942 TO 1947 WITH THAT IN CORRESPONDING MONTHS OF 1941



THE UNIVERSITY OF CHICAGO LIBRARY



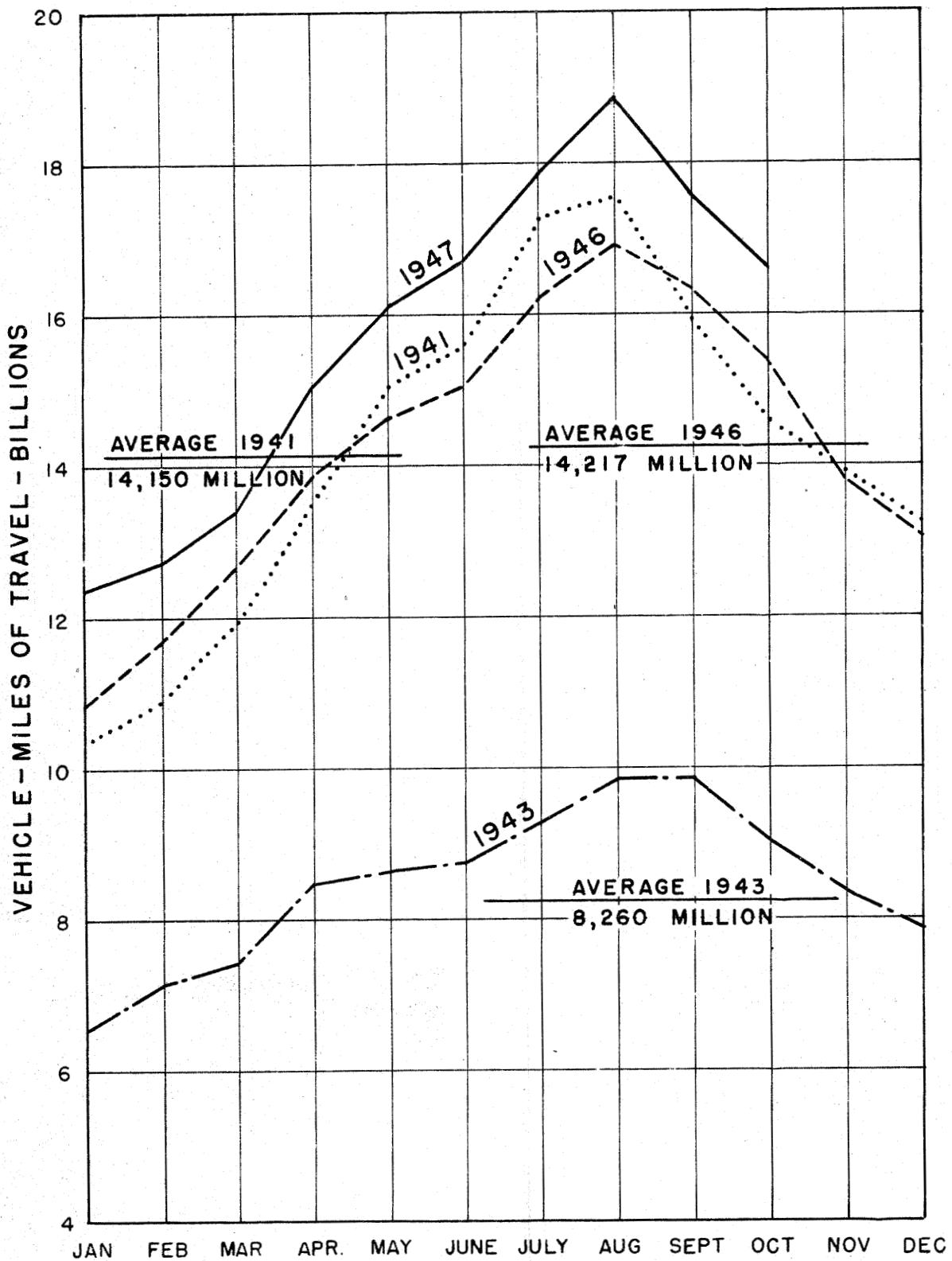
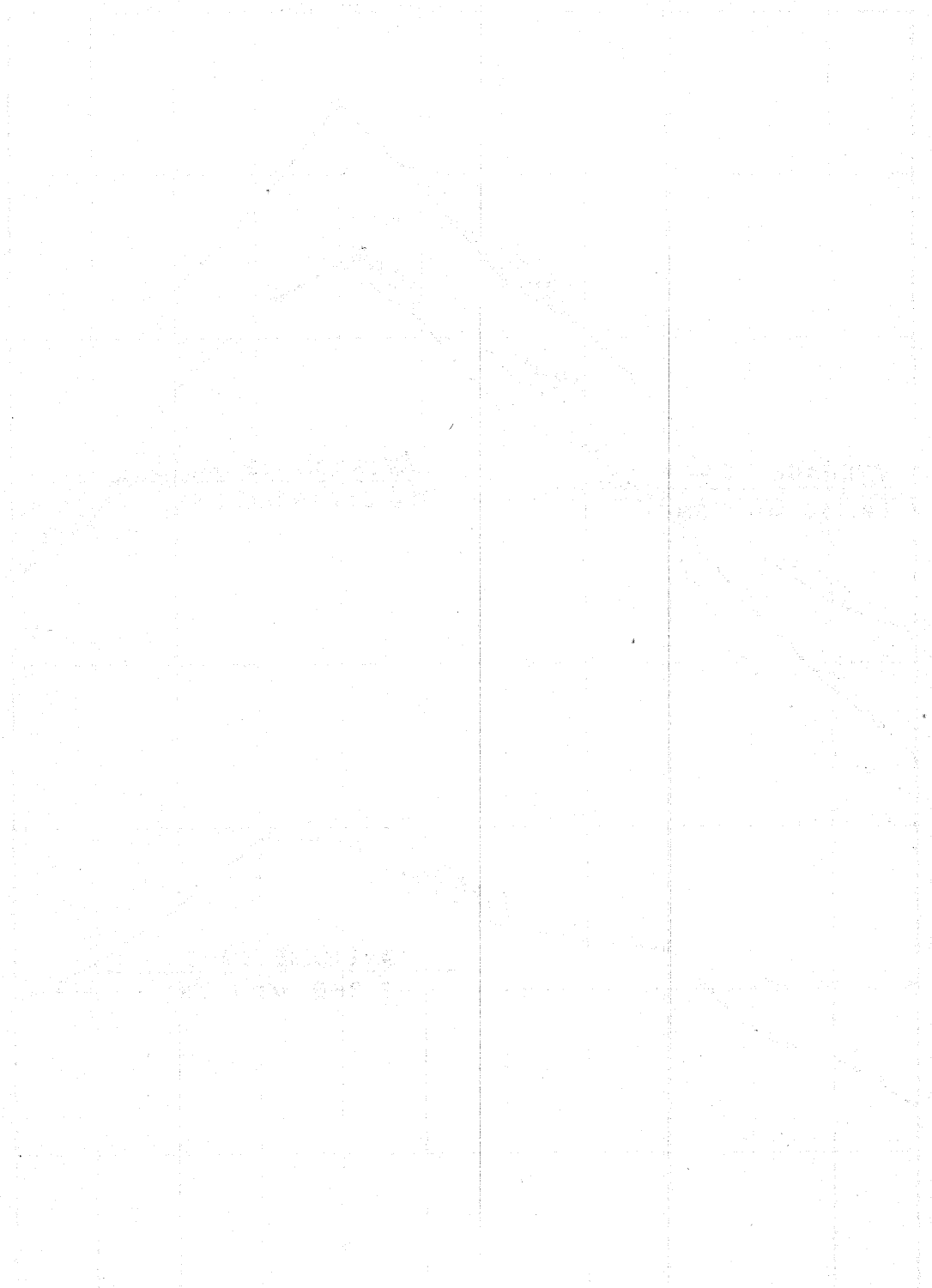


FIGURE 2 - VEHICLE - MILES OF TRAVEL ON ALL RURAL ROADS IN 1941, 1943, 1946 AND 1947



UNITED STATES GOVERNMENT

OFFICE OF THE SECRETARY OF DEFENSE
WASHINGTON, D. C. 20301