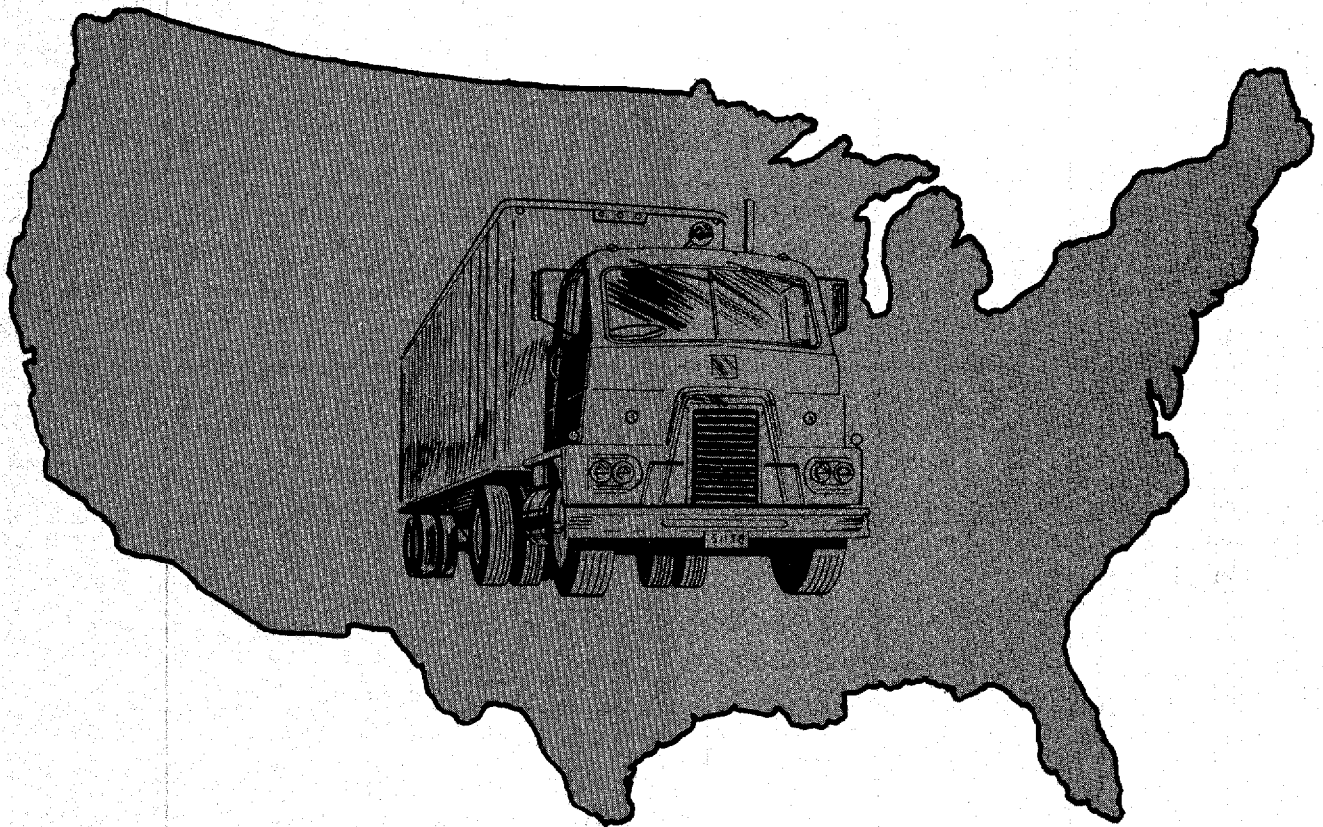
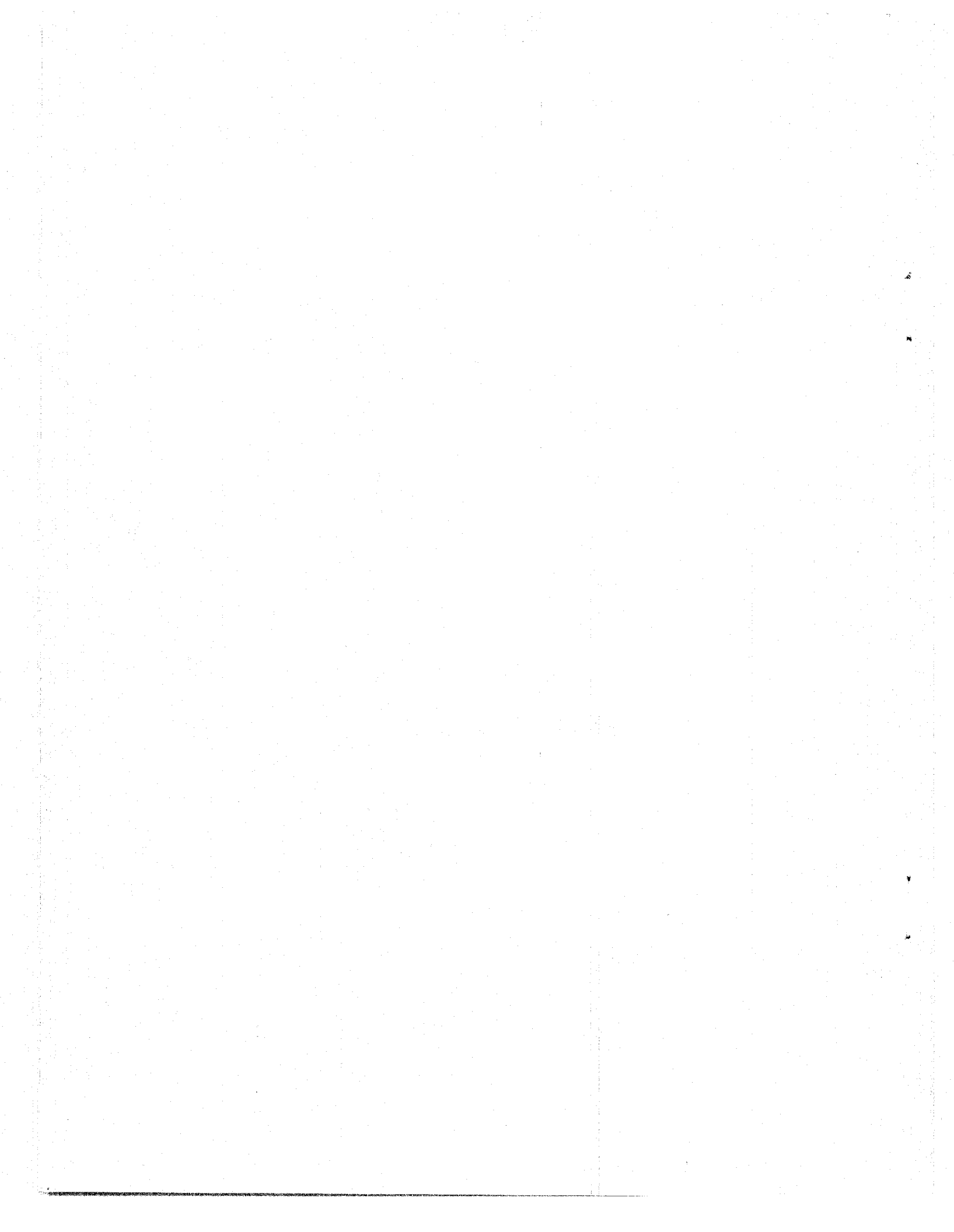


014

1974 NATIONAL TRUCK CHARACTERISTIC REPORT



**U.S. DEPARTMENT OF TRANSPORTATION
Federal Highway Administration**



1974 NATIONAL TRUCK
CHARACTERISTIC REPORT

April 1976

P. Kent

H. Bishop

Planning Services Branch
Office of Highway Planning
Federal Highway Administration

PURPOSE

The planning and programing need for truck weight data are increasing at the State, Regional and National level. The resulting demand for truck weight information led us to seek some means of providing users with a more effective tool for their work. This collection of key truck weight summary tables and graphs is intended to meet that need.

Any comments regarding suggested additions and/or revisions would be greatly appreciated.

All comments should be forwarded to:

Planning Services Branch
Office of Highway Planning
Federal Highway Administration
Washington, D.C. 20590

Table of Contents

	<u>Page</u>
INTRODUCTION.....	1
SUMMARY.....	2
I. Truck Sample Distribution	
Graph 1. Distribution of 1974 Truck Weight Study Sample by Vehicle Type.....	4
Graph 2. 1974 Distribution of Trucks Counted by Type.....	5
Graph 3. Truck types as a percent of all vehicles 1969-74.....	6
Graph 4. Truck types as a percent of all trucks 1969-74.....	7
II. State Truck Weight Programs	
Table 1. Number of trucks counted and weighed; Planning Program dollars per truck weighed 1974.....	8
III. Truck Weight Characteristics	
A. National	
Graph 5. Average weight of loaded trucks 1969-74.....	9
Graph 6. Average weight of unloaded trucks 1969-74.....	10
Graph 7. Average carried load 1969-74.....	11
B. Regional and State	
Table 2. Average weight of loaded trucks 1970-74.....	12
Table 3. Average weight of unloaded trucks 1970-74.....	22
Table 4. Trucks per thousand vehicles with a total gross weight over 50,000 lbs. 1970-74.....	32
Table 5. Trucks per thousand vehicles with axle weights over 22,000 lbs. 1970-74.....	34
C. Road Systems	
Table 6. Percent carrying loads by truck and body types and class of operation 1974.....	36
Table 7. Average carried loads by truck and body types and class of operation 1974.....	41
Table 8. Frequency of heavy axle and heavy gross weights; operating characteristics by truck type 1974.....	46

The first part of the document discusses the importance of maintaining accurate records of all transactions and activities.

This section outlines the various methods used to collect and analyze data, including surveys, interviews, and focus groups.

The results of the data collection process are presented in this section, showing a clear trend towards increased participation.

Based on the findings, several recommendations are made to improve the overall effectiveness of the program.

These recommendations include increasing the frequency of communication and providing more opportunities for feedback.

The document concludes by emphasizing the need for ongoing evaluation and adjustment to ensure long-term success.

Overall, the findings suggest that the current approach is effective, but there is still room for improvement in certain areas.

The next steps will be to implement the recommended changes and monitor their impact on the program's outcomes.

It is expected that these adjustments will lead to a more engaged and active participant base.

The final section of the document provides a summary of the key findings and a list of references.

The author expresses gratitude to the participants and staff who made this study possible.

The data collected during the study is available upon request to interested parties.

The document is intended to serve as a guide for future research and program development.

The findings presented here are based on the data collected and may not be generalizable to all contexts.

The author reserves the right to use the information contained in this document for future publications.

The document is a confidential document and should be handled accordingly.

The information provided in this document is for informational purposes only.

The author does not assume any liability for the use of the information provided.

The document is subject to change without notice.

The author is available for consultation on related matters.

The document is a work of the author and is not to be reproduced without permission.

INTRODUCTION

The information included in this booklet is based on the Annual Truck Weight Study. Data for these tables are collected by the State Highway Agencies and forwarded to the Washington Headquarters of FHWA. After the data are processed, the results are returned to the various States.

Weighing operations for each station are normally conducted for an 8-hour period during daylight hours. Usually, these operations are performed on weekdays during the summer months. The size of a weighing operation crew varies from 8 to 16 persons, depending on the type of operation and the equipment used.

Classification counts are normally conducted for three 8-hour shifts, not necessarily consecutive, which in total cover all 24-clock hours. One shift usually coincides with the weighing operation.

FHWA is constantly working with the States to obtain truck weight data in the most cost-effective means possible. We recently instituted a program whereby States no longer need to submit this information annually. Under this new procedure any State can weigh trucks every other year, with half of the States weighing in any 1 year. Similarly, we look forward to effective utilization of dynamic weighing stations, which should dramatically reduce personnel costs. Such data are expected to be included in subsequent reports.

SUMMARY

Trucks represent an increasingly large percent of the vehicles on the road. The largest increases are in the number of single unit 4-tire trucks, possibly due to the increasing popularity of pickup trucks as personal vehicles. The number of five axle tractor semi-trailers has also increased significantly.

State truck weight programs vary tremendously, both in scope and cost. However, differences in programming levels should be viewed cautiously. They are in part reflections of differing accounting procedures. For example, the HP&R funding figures for one State's truck weight program may include estimates for administrative or computer support operations, while another State may exclude these expenses, but include the cost of publishing reports.

Nationally, the average weight of loaded trucks has remained fairly stable since 1969. There appears to be a very slight increase in the weight of unloaded trucks, and a marginal decrease in the average carried load. The puzzling drop in truck and load weights during 1970 may simply be due to statistical variation.

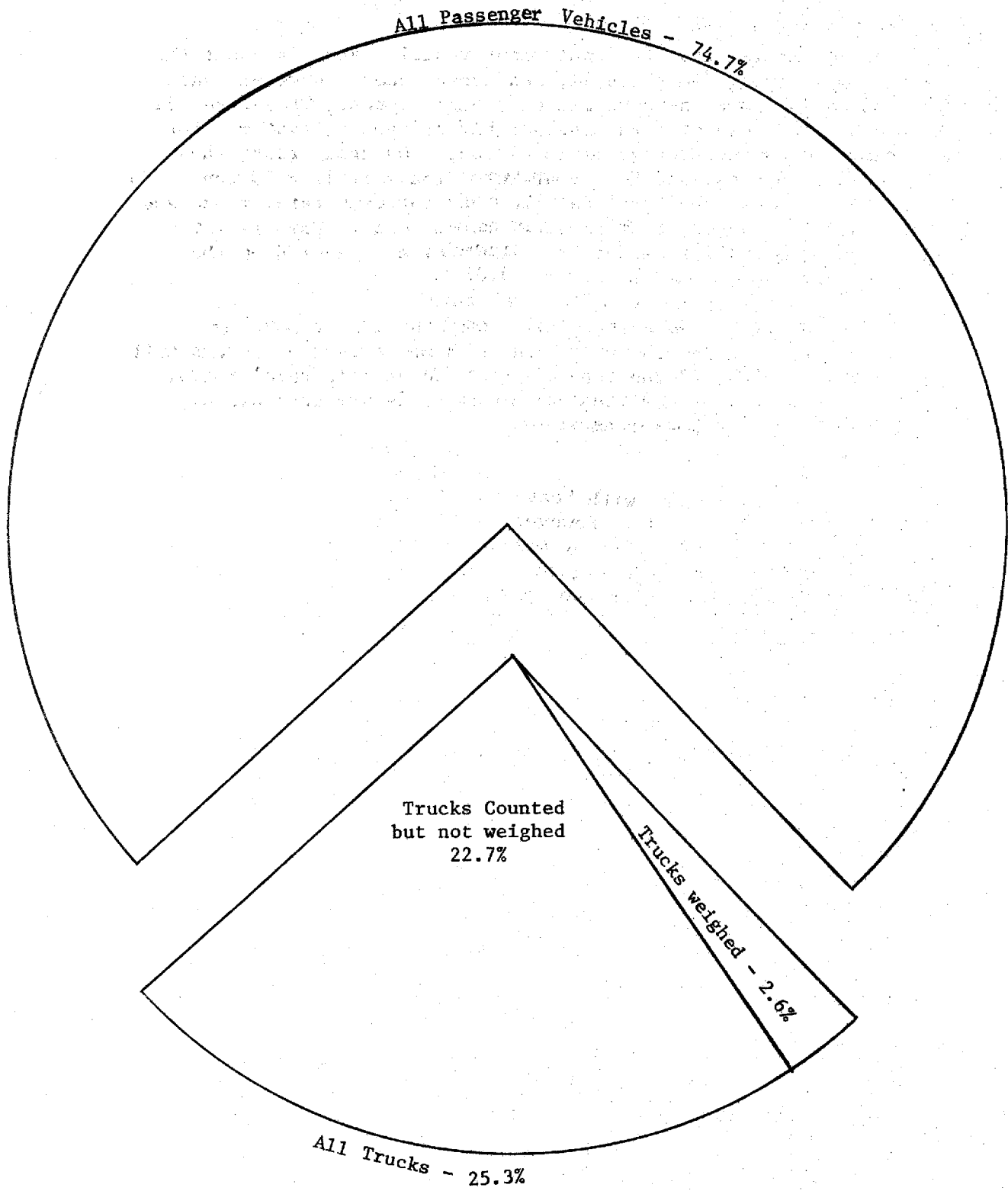
On a State-by-State basis, the average weight of loaded and unloaded trucks increased slightly during the period from 1970-1974. The number of trucks per thousand vehicles with a total gross weight over 50,000 lbs. and/or axle weights over 22,000 lbs. also increased during this period.

Trucks traveling on rural roads are more likely to carry a load than those on urban roads. About half of the single unit trucks and two thirds of the combination trucks carry a load. As a class, the highest percent of the trucks carrying a load (72 percent) were those regulated by the ICC. In terms of body type, vans and refrigerated vans were most likely to carry a load (75 percent and 74 percent, respectively).

The average carried load for equivalent vehicle types is about the same for main rural, local rural, and urban roads. However, each system does not have the same mix of vehicle types. Therefore, the average carried load differs considerably by type of system. For main rural roads the average is 13.07 tons. On urban roads the average is 8.56 tons, and for local rural roads it is 6.50 tons. In terms of ton-miles, the total carried load for main rural roads and urban roads far exceeds that of local rural roads. This is largely due to the much smaller amount of vehicle miles traveled on the latter system.

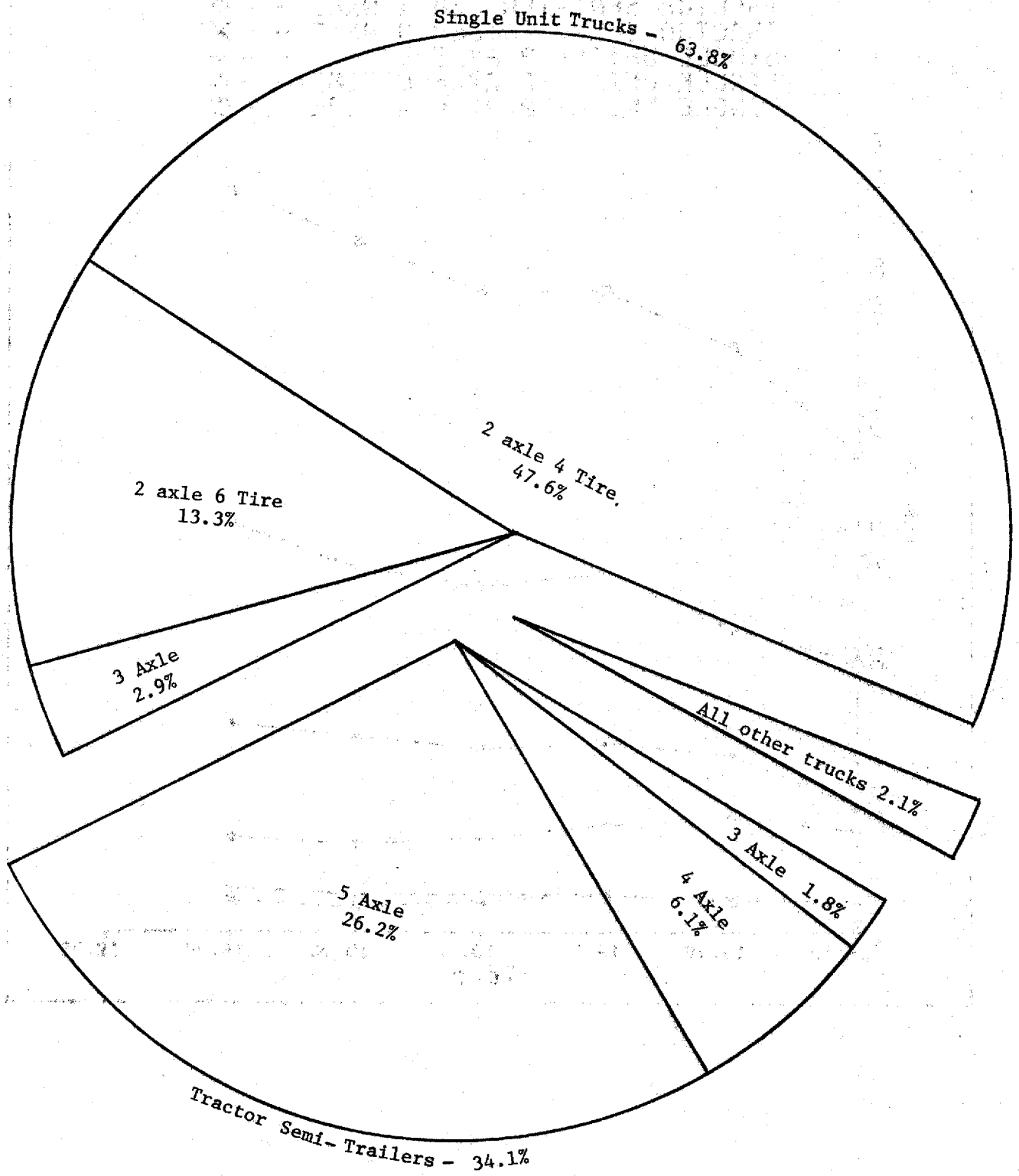
The percent of trucks with heavy axle weights (18k or more) is highest on urban roads. However, the highest percent of trucks with a heavy gross weight (30k or more) is found on main rural roads. In both categories, the figures for local roads are considerably lower than for the other two systems.

Graph 1 - Distribution of 1974 Truck Weight Study Sample by Vehicle Type



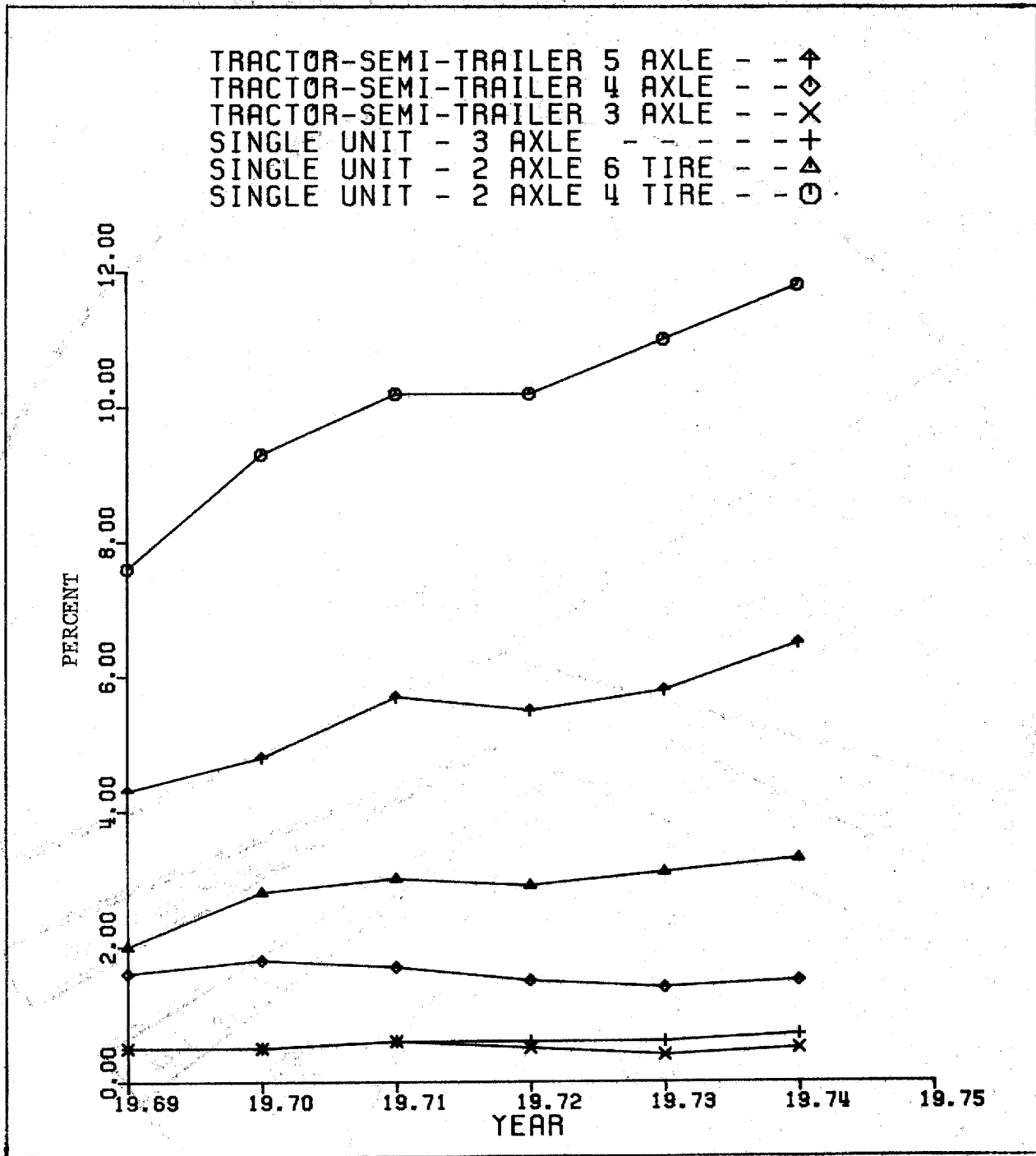
Note: Based on vehicles counted.

Graph 2 - 1974 Distribution of Trucks Counted by Type



Note: Based on vehicles counted.

Graph 3 - Truck Types as a Percent of all Vehicles



Graph 4 - Truck Types as a Percent of all Trucks

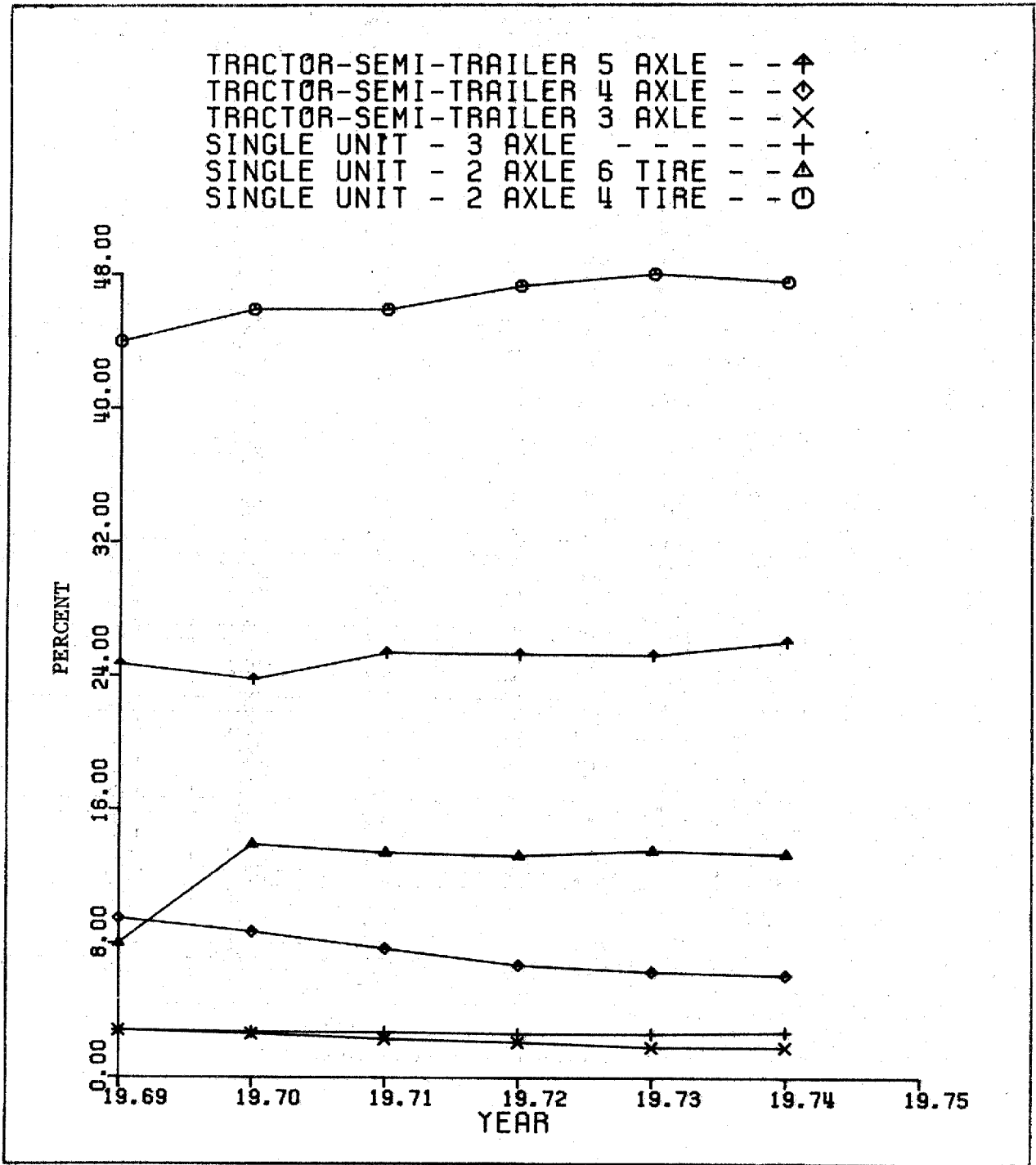


Table 1 - Distribution by State and Region of stations operated, vehicles counted, trucks weighed, and funds programmed during 1974 Annual Truck Weight Study

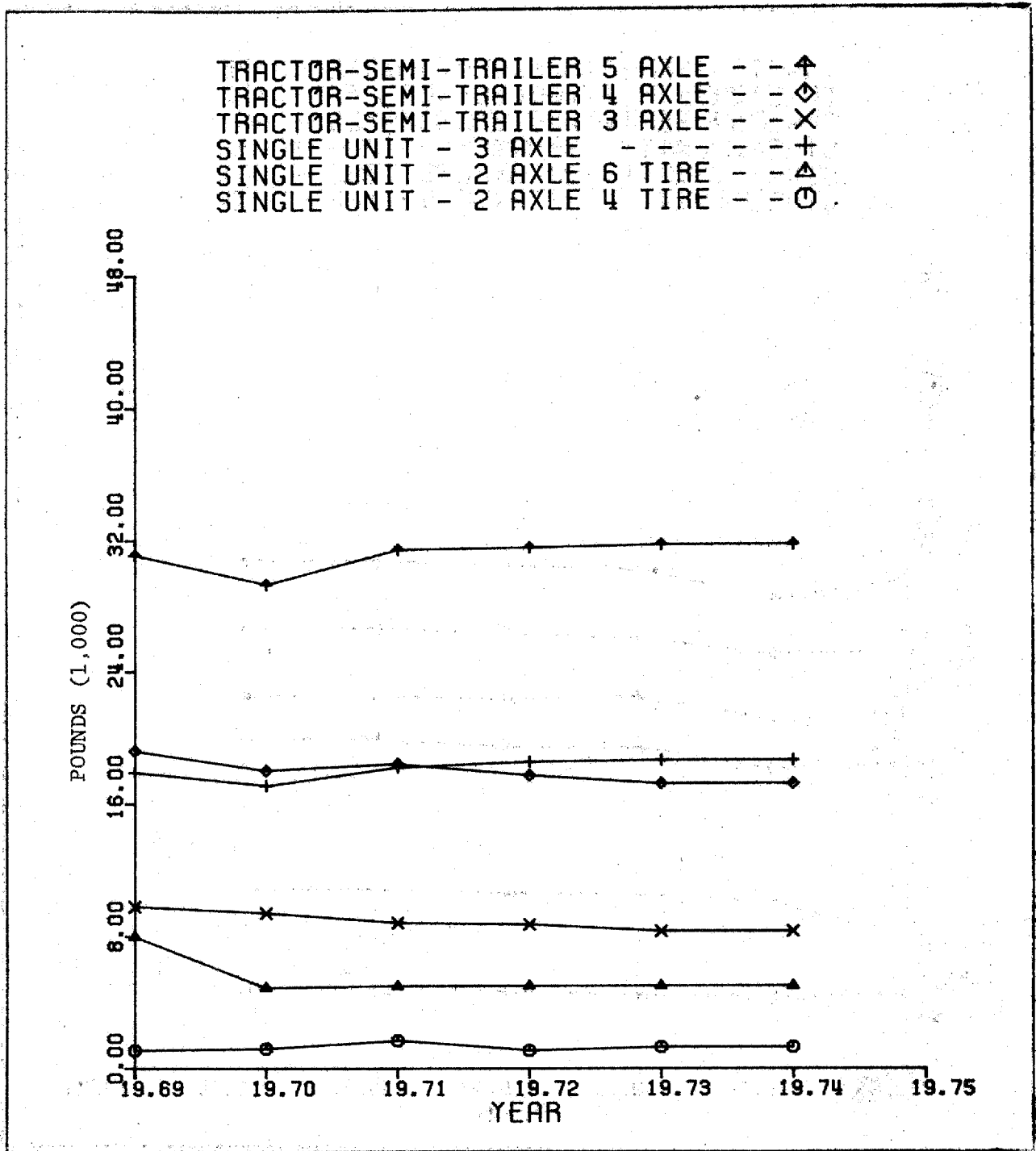
R E G I O N	State	No. of stations	Vehicles Counted	Trucks		Trucks weighed as a percent of trucks counted	Trucks as a percent of all vehicles	HF&K Funds Programmed ^{1/}	Planning Program dollars per truck weighed ^{1/}
				Counted	Weighed				
1	CONNECTICUT	9	239,212	41,322	3,772	9.1	17.3	25,000	6.63
	MAINE	19	162,788	32,689	6,348	19.4	20.1	42,060	6.63
	MASSACHUSETTS	4	175,105	19,371	720	3.7	11.1	12,000*	16.67
	NEW HAMPSHIRE	11	120,843	18,937	2,784	14.7	15.7	13,000	4.67
	NEW JERSEY	26	530,383	98,437	13,336	13.5	18.6	60,000	4.50
	NEW YORK	19	368,476	67,109	5,504	8.2	18.2	79,000	14.35
	RHODE ISLAND	5	78,636	13,573	1,277	9.4	17.3	7,000	5.48
	VERMONT	8	48,746	8,613	1,489	17.3	17.7	19,410	13.04
	PUERTO RICO	**	**	**	**	**	**	11,500	**
	TOTAL	101	1,724,189	300,051	35,230	11.7	17.4	268,970	7.63
3	DELAWARE	8	691,435	178,925	2,198	1.2	25.88	8,500	3.87
	MARYLAND	12	215,376	54,903	3,626	6.6	25.5	35,000	9.65
	PENNSYLVANIA	20	309,935	78,971	9,045	11.5	25.5	63,400	7.01
	VIRGINIA	25	371,926	87,183	8,612	9.9	23.4	27,000	3.14
	WEST VIRGINIA	17	154,100	41,791	4,838	11.6	27.1	19,184	3.97
	DIST. OF COLUMBIA	**	**	**	**	**	**	**	**
	TOTAL	82	1,742,772	441,773	28,319	6.4	25.3	153,084	5.41
4	ALABAMA	14	137,947	40,216	8,112	20.2	29.2	14,000	1.73
	FLORIDA	**	**	**	**	**	**	152,000	**
	GEORGIA	15	176,706	48,267	2,393	5.0	27.3	46,000	19.22
	KENTUCKY	11	118,441	35,637	7,739	21.7	30.1	30,000	3.88
	MISSISSIPPI	15	137,103	43,471	4,613	10.6	31.7	18,000	3.90
	NORTH CAROLINA	26	299,504	81,515	11,661	14.3	27.2	22,500	1.93
	SOUTH CAROLINA	12	133,634	32,186	2,384	7.4	24.1	10,000*	4.19
	TENNESSEE	14	170,020	52,945	3,846	7.3	31.1	46,025	11.97
	TOTAL	107	1,173,018	334,237	40,748	12.2	28.5	186,525	4.58
5	ILLINOIS	16	229,816	51,151	4,889	9.6	22.3	32,000	6.55
	INDIANA	19	164,028	53,290	4,148	7.8	32.5	30,000*	7.23
	MICHIGAN	15	152,480	50,596	4,627	9.1	33.2	58,000	12.54
	MINNESOTA	23	151,114	27,501	2,889	10.5	18.2	60,200	20.84
	OHIO	26	324,919	83,620	10,175	12.2	25.7	112,000	11.01
	WISCONSIN	23	248,809	61,290	6,174	10.1	24.6	35,000	5.67
	TOTAL	122	1,271,166	327,448	32,902	10.0	25.8	327,200	9.94
	6	ARKANSAS	15	175,112	61,882	3,434	5.5	35.3	12,000
LOUISIANA		13	84,584	27,815	1,681	6.0	32.8	58,571*	34.84
NEW MEXICO		13	111,061	35,498	4,501	15.2	32.0	52,594	11.68
OKLAHOMA		11	71,853	26,841	6,175	23.0	37.4	145,000	23.48
TEXAS		10	78,944	29,661	3,278	11.4	36.3	46,500	14.19
TOTAL		62	521,554	180,697	19,069	10.6	34.6	314,165	16.47
7		IOWA	16	144,298	44,732	23,964	53.6	31.0	50,000
	KANSAS	15	98,945	28,579	2,961	10.4	28.9	25,100	8.48
	MISSOURI	12	140,420	40,422	2,496	6.2	28.8	10,000	4.01
	NEBRASKA	14	84,616	26,137	3,051	11.7	30.9	13,500	4.42
	TOTAL	57	468,279	139,870	32,472	23.2	29.9	98,600	3.04
8	COLORADO	12	103,125	35,066	1,911	5.4	34.0	22,600	11.83
	MONTANA	21	93,820	33,483	3,722	11.1	35.7	69,000	18.54
	NORTH DAKOTA	12	58,914	17,848	3,067	12.2	30.3	18,000	5.87
	SOUTH DAKOTA	12	72,013	20,262	2,658	13.1	28.1	29,081	10.94
	UTAH	8	108,685	33,062	1,752	5.3	30.4	11,900	6.79
	WYOMING	11	75,440	27,364	1,052	3.8	36.3	14,900	14.16
	TOTAL	76	511,997	167,085	14,162	8.5	32.6	165,481	11.68
9	ARIZONA	14	72,468	29,742	1,873	6.3	41.0	23,200	12.39
	CALIFORNIA	15	566,642	124,567	6,836	5.5	22.0	78,600	11.50
	HAWAII	5	55,131	11,110	970	8.7	20.2	22,000	22.68
	NEVADA	10	51,512	16,145	2,347	14.5	31.3	30,000	12.78
	TOTAL	44	745,753	181,564	12,026	6.6	24.3	153,800	12.79
10	ALASKA	**	**	**	**	**	**	12,000	**
	IDAHO	15	143,094	12,133	3,942	32.5	8.5	36,100	9.16
	OREGON	8	62,150	23,308	3,898	16.7	37.5	26,300	6.75
	WASHINGTON	10	171,620	49,564	2,675	5.4	28.9	13,525	5.06
	TOTAL	33	376,864	85,005	10,515	12.4	22.6	87,925	8.36
GRAND TOTAL	684	8,535,929	2,157,730	225,443	10.4	25.3	1,755,750	7.79	

*Equipment and construction cost not included.

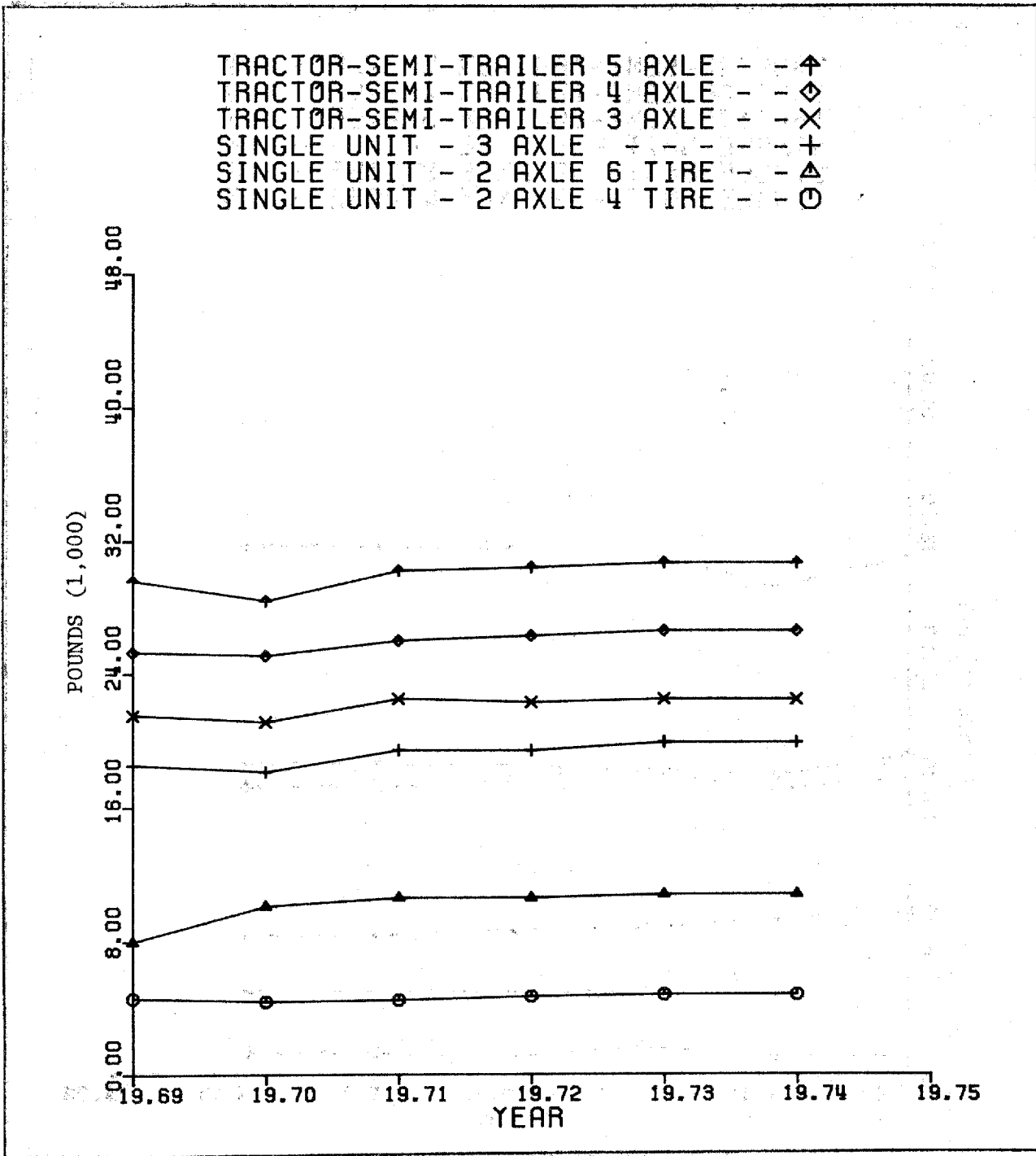
**No data received.

^{1/} Differences in funding may in part reflect differences in State accounting procedures.

Graph 5 - Average Weight of Loaded Trucks



Graph 6 - Average Weight of Unloaded Trucks



Graph 7 - Average Carried Load

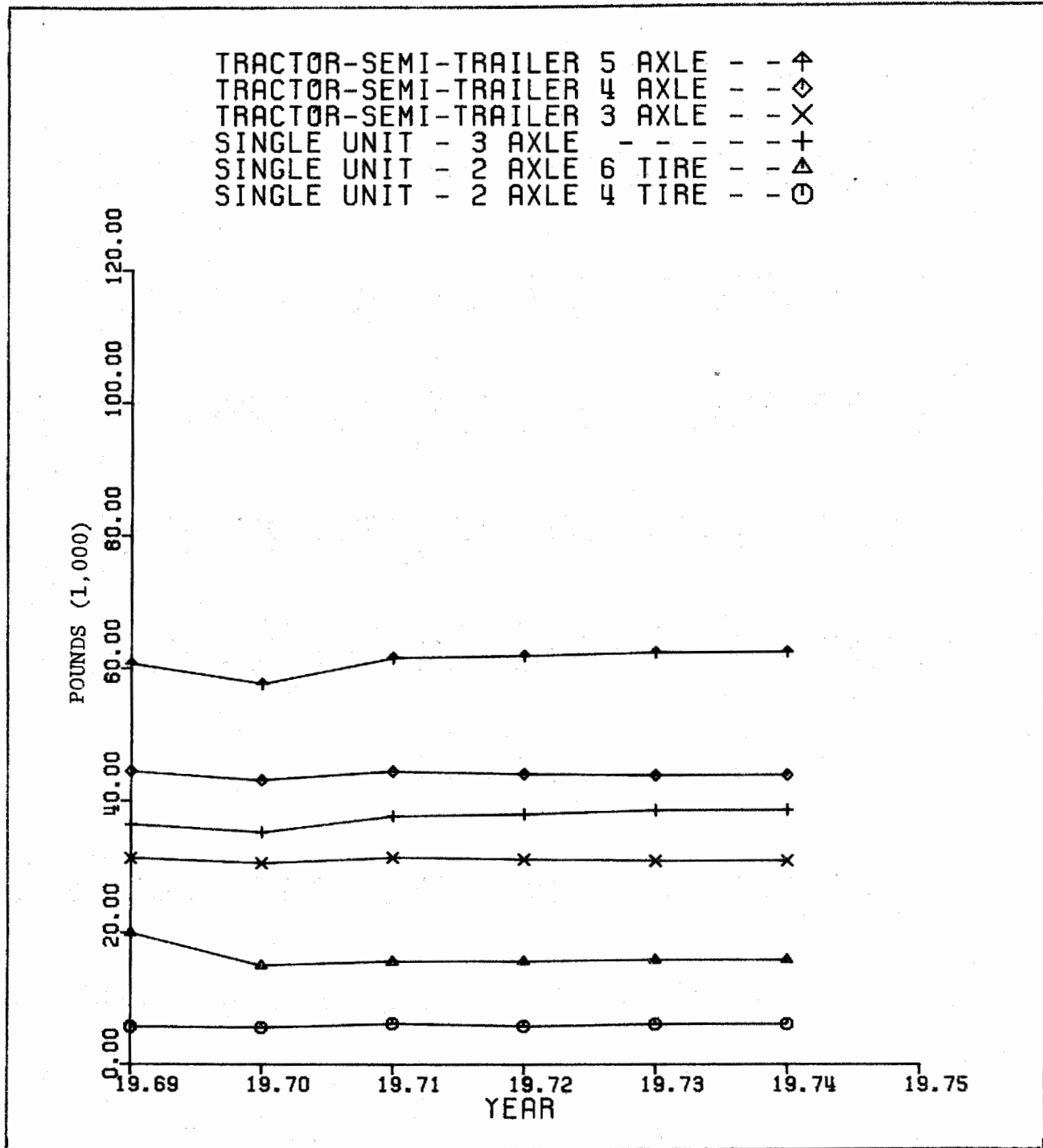


TABLE 2 - REGIONAL SUMMARY OF WEIGHTS OF LOADED TRUCKS (IN 1,000LBS.) BY STATE AND VEHICLE TYPE, 1970-1974
REGION 01

STATE	YEAR	VEHICLE TYPES						
		SINGLE UNIT				TRACTOR - SEMITRAILER COMBINATIONS		
		PANEL PICKUP	2-AXLE 4-TIRE	2-AXLE 6-TIRE	3-AXLE	3-AXLE	4-AXLE	5-AXLE
CONNECTICUT	74	6.5	7.9	16.5	38.6	31.1	46.5	64.1
	73	6.7	7.7	16.3	45.4	32.2	46.1	63.8
	72	6.0	6.8	15.8	41.3	32.0	45.5	62.2
	71	5.9	7.1	16.9	40.6	31.7	50.3	65.5
	70	5.9	8.1	15.8	41.1	33.7	47.6	63.4
MAINE	74	5.4	8.0	15.2	37.9	26.3	39.6	57.2
	73	5.3	6.5	16.0	40.7	30.5	47.5	65.7
	72	5.1	7.4	16.4	41.3	31.1	44.7	61.1
	71	5.6	6.6	15.2	40.9	31.5	44.4	59.8
	70	5.0	6.6	14.7	40.5	31.0	45.5	60.9
MASSACHUSETTS	74	5.6	6.3	15.2	45.1	26.7	38.6	61.2
	73	5.5	7.2	14.8	48.9	29.1	40.8	64.4
	72	4.9	6.5	15.2	49.9	29.0	41.6	61.4
	71	5.1	6.3	14.5	48.6	31.0	42.9	62.4
	70	5.1	6.2	15.6	44.2	27.7	45.4	60.2
NEW HAMPSHIRE	74	6.0	6.6	17.5	45.8	27.9	45.5	71.5
	73	5.4	6.4	16.7	47.2	29.4	45.4	73.0
	72	6.0	5.7	16.6	47.0	28.4	47.8	77.2
	71	5.1	6.0	16.5	45.4	30.1	51.0	71.6
	70	5.1	6.9	16.5	44.3	33.0	50.7	72.6
NEW JERSEY	74	7.0	7.9	17.1	54.0	33.3	46.4	64.0
	73	6.6	8.2	17.4	51.6	34.5	47.0	64.9
	72	6.3	8.2	17.0	49.0	35.1	46.5	64.1
	71	7.0	8.7	17.5	47.4	36.0	48.4	65.6
	70	6.4	8.0	17.0	47.2	33.9	46.3	62.6
NEW YORK	74	6.4	7.6	15.2	45.6	31.9	39.2	57.8
	73	5.7	7.2	15.2	42.9	31.2	41.2	60.3
	72	6.1	7.4	15.6	44.3	30.6	42.5	59.3
	71	4.9	6.6	15.4	44.3	31.1	42.6	59.1
	70	4.9	6.6	15.4	44.3	31.1	42.6	59.1
RHODE ISLAND	74	5.9	14.0	15.3	44.7	31.4	42.1	57.7
	73	5.9	7.3	15.3	50.8	35.1	49.9	67.2
	72	5.9	9.1	18.1	40.1	32.8	49.3	66.0
	71	5.6	8.1	15.7	35.3	36.1	47.8	61.8
	70	5.9	8.9	15.7	41.8	29.9	47.4	61.4
VERMONT	74	5.2	8.3	16.8	43.0	28.8	46.3	64.7
	73	5.2	6.5	16.4	42.0	29.4	45.6	64.7
	72	5.2	6.5	16.4	42.0	29.4	45.6	64.7
	71	4.9	6.2	15.6	43.0	31.4	46.4	63.7
	70	4.9	6.2	15.6	43.0	31.4	46.4	63.7
PUERTO RICO	74	5.7	9.9	19.3	60.3	41.6	67.9	100.6
	73	5.7	9.9	19.3	60.3	41.6	67.9	100.6
	72	5.9	8.7	20.1	53.3	44.6	71.0	86.5
	71	5.9	8.7	20.1	53.3	44.6	71.0	86.5
	70	6.0	7.9	18.5	52.7	44.6	80.7	106.1

TABLE 2.- REGIONAL SUMMARY OF WEIGHTS OF LOADED TRUCKS (IN 1,000LBS.) BY STATE AND VEHICLE TYPE, 1970-1974
REGION 03

STATE	YEAR	VEHICLE TYPES						
		SINGLE UNIT				TRACTOR - SEMITRAILER COMBINATIONS		
		PANEL PICKUP	2-AXLE 4-TIRE	2-AXLE 6-TIRE	3-AXLE	3-AXLE	4-AXLE	5-AXLE
DELAWARE	74	5.9	7.8	18.1	54.7	32.3	52.0	76.9
	73	6.7	7.2	16.6	51.5	32.7	51.7	76.3
	72	5.8	9.2	15.8	48.6	36.8	45.2	66.8
	71	5.4	9.5	16.3	47.6	33.6	45.4	67.3
	70	5.8	7.5	15.8	44.3	29.9	44.9	64.0
MARYLAND	74	6.7	7.5	17.1	49.4	33.7	45.9	67.9
	73	6.7	8.4	17.1	48.9	33.4	46.2	67.4
	72	5.7	8.4	17.1	48.9	33.4	46.2	67.4
	71	6.6	8.5	17.1	46.5	35.8	49.8	68.2
	70	7.5	9.2	16.8	47.4	35.3	47.2	67.2
PENNSYLVANIA	74	6.2	12.4	16.4	37.9	30.9	43.0	61.9
	73	6.2	12.4	16.4	37.9	30.9	43.0	61.9
	72	5.6	7.0	14.5	35.0	30.2	43.2	60.0
	71	5.7	8.2	14.8	33.1	28.3	39.7	56.2
	70	5.3	7.6	14.4	38.2	28.8	40.8	56.2
VIRGINIA	74	5.4	7.0	15.5	39.3	30.6	38.9	59.7
	73	5.7	7.2	15.4	40.1	30.0	40.2	59.3
	72	5.6	7.0	15.7	39.6	30.9	40.4	59.3
	71	5.5	6.8	15.4	38.0	31.5	41.3	60.0
	70	5.4	6.3	15.3	37.8	31.0	42.0	58.6
WEST VIRGINIA	74	6.6	7.8	14.8	37.6	30.8	43.3	64.1
	73	6.8	7.5	14.7	38.8	32.8	44.1	62.9
	72	6.7	7.6	15.0	40.9	32.3	44.9	64.0
	71	6.5	8.2	15.9	37.2	34.5	47.8	67.3
	70	5.7	7.8	15.0	35.6	33.5	45.9	63.9
DISTRICT OF COLUMBIA	74	0.0	18.0	18.3	48.6	28.9	39.8	65.0
	73	0.0	18.0	18.3	48.6	28.9	39.8	65.0
	72	10.3	16.1	10.1	47.6	29.9	41.1	60.0
	71	7.7	15.1	0.0	46.2	26.2	38.9	58.9
	70	5.8	10.7	16.0	39.6	28.9	36.4	55.9

TABLE 2 - REGIONAL SUMMARY OF WEIGHTS OF LOADED TRUCKS (IN 1,000LBS.) BY STATE AND VEHICLE TYPE, 1970-1974

STATE	YEAR	VEHICLE TYPES						
		SINGLE UNIT			TRACTOR - SEMITRAILER COMBINATIONS			
		PANEL PICKUP	2-AXLE 4-TIRE	2-AXLE 6-TIRE	3-AXLE	3-AXLE	4-AXLE	5-AXLE
ALABAMA	74	6.4	6.9	14.8	36.1	28.8	36.1	55.3
	73	5.9	6.8	14.9	33.0	29.2	38.0	54.4
	72	6.0	6.9	14.9	39.3	28.4	38.4	55.6
	71	5.7	6.8	15.3	39.2	28.7	40.5	57.9
	70	6.2	6.6	15.1	37.7	29.5	39.9	54.0
FLORIDA	74	5.1	5.7	15.5	38.3	31.0	55.1	59.3
	73	5.1	5.7	15.5	38.3	31.0	55.1	59.3
	72	5.1	6.8	15.2	38.3	31.1	57.2	59.5
	71	5.1	6.8	15.2	38.3	31.1	57.2	59.5
	70	4.8	6.9	14.6	34.8	31.6	54.9	59.7
GEORGIA	74	5.8	8.3	15.7	38.8	33.6	54.1	69.2
	73	5.7	7.2	15.6	40.7	31.3	46.5	63.6
	72	5.3	6.9	15.7	38.7	32.4	47.2	60.5
	71	4.8	6.8	15.5	39.3	32.8	45.9	59.8
	70	5.2	7.6	14.6	37.5	33.2	46.7	60.5
KENTUCKY	74	5.8	8.0	15.4	36.0	30.9	41.3	60.5
	73	5.5	7.7	15.6	33.4	29.3	40.2	59.7
	72	5.7	6.6	15.4	31.9	31.3	40.1	59.9
	71	5.5	7.0	15.4	33.2	31.8	41.5	59.1
	70	5.4	6.1	14.9	31.4	30.6	41.2	58.4
MISSISSIPPI	74	5.2	6.2	14.9	32.5	30.9	41.8	61.4
	73	5.8	8.4	15.4	30.4	33.1	42.8	61.3
	72	6.1	16.0	15.8	31.4	32.1	42.7	61.0
	71	6.3	0.0	15.7	33.4	32.4	45.2	61.3
	70	5.2	7.1	15.4	34.4	32.2	44.1	60.3
NORTH CAROLINA	74	5.7	7.1	15.6	36.3	30.1	39.2	58.1
	73	5.8	8.6	15.7	36.5	30.7	40.3	59.9
	72	5.9	7.2	15.6	36.6	31.3	40.5	58.1
	71	5.6	6.9	15.6	38.9	30.8	40.9	58.8
	70	5.8	7.3	15.3	36.5	30.2	41.4	57.2
SOUTH CAROLINA	74	6.1	6.9	16.6	43.4	31.8	42.8	63.6
	73	5.9	8.1	15.4	44.0	31.1	44.8	62.5
	72	6.1	7.9	16.3	38.5	31.2	44.2	62.2
	71	6.0	6.7	15.8	38.1	31.8	46.3	65.2
	70	5.9	6.4	16.1	41.7	36.3	49.3	64.7
TENNESSEE	74	5.9	6.8	14.2	41.9	31.9	42.8	63.3
	73	5.8	7.2	14.7	42.0	32.2	40.5	62.6
	72	6.0	6.9	15.4	45.2	32.8	41.7	61.3
	71	6.0	5.9	15.1	40.7	31.9	42.2	62.9
	70	5.9	5.5	15.5	42.9	32.8	43.3	62.8

TABLE 2 - REGIONAL SUMMARY OF WEIGHTS OF LOADED TRUCKS (IN 1,000LBS.) BY STATE AND VEHICLE TYPE, 1970-1974
REGION 05

STATE	YEAR	VEHICLE TYPES						
		SINGLE UNIT				TRACTOR - SEMITRAILER COMBINATIONS		
		PANEL PICKUP	-AXLE 4-TIRE	2-AXLE 6-TIRE	3-AXLE	3-AXLE	4-AXLE	5-AXLE
ILLINOIS	74	5.9	7.0	15.3	33.1	31.0	38.5	59.3
	73	5.4	14.9	15.7	36.0	30.1	39.9	57.9
	72	5.4	9.2	14.0	35.7	30.5	39.5	58.7
	71	5.6	7.3	15.0	35.1	30.4	39.3	58.7
	70	5.2	6.8	15.1	33.0	30.0	39.2	58.4
INDIANA	74	5.8	6.4	14.3	33.5	30.0	38.6	59.8
	73	5.2	6.5	14.6	31.0	29.8	39.6	59.9
	72	5.5	5.7	14.2	34.3	31.2	40.3	59.5
	71	5.0	6.2	14.5	32.8	28.7	38.0	57.5
	70	5.2	5.8	14.0	28.7	28.7	40.0	59.7
MICHIGAN	74	5.9	6.0	15.0	32.2	28.8	37.7	57.6
	73	5.6	6.6	14.7	31.5	28.0	38.6	58.7
	72	5.3	6.7	14.8	32.2	30.2	38.0	55.7
	71	5.3	6.7	14.5	32.4	29.6	39.2	57.8
	70	5.5	7.0	14.5	30.8	29.2	37.2	56.5
MINNESOTA	74	0.0	0.0	16.2	36.4	29.0	38.5	61.9
	73	5.7	8.6	15.5	35.6	29.2	38.3	62.0
	72	5.2	6.6	16.0	35.7	28.4	37.2	60.7
	71	5.1	6.7	15.8	35.0	28.5	38.4	61.5
	70	5.8	7.1	14.3	36.0	33.5	43.9	71.7
OHIO	74	6.0	7.4	18.4	36.2	35.5	42.6	60.6
	73	6.1	7.4	19.0	35.7	36.3	42.5	59.8
	72	5.8	7.4	18.4	36.7	35.2	43.9	60.9
	71	5.5	6.9	15.9	36.6	32.4	41.8	60.2
	70	5.5	7.0	15.3	34.1	33.4	41.9	59.7
WISCONSIN	74	5.8	9.6	15.7	35.2	30.8	39.6	60.7
	73	5.8	8.3	15.2	35.1	30.4	40.3	61.4
	72	5.6	8.0	15.7	33.6	30.1	41.2	61.2
	71	5.8	9.0	15.6	35.5	31.1	40.9	61.9
	70	5.6	9.3	15.4	33.5	30.4	42.2	60.3

TABLE 2 - REGIONAL SUMMARY OF WEIGHTS OF LOADED TRUCKS (IN 1,000LBS.) BY STATE AND VEHICLE TYPE, 1970-1974
REGION 06

STATE	YEAR	VEHICLE TYPES						
		SINGLE UNIT				TRACTOR - SEMITRAILER COMBINATIONS		
		PANEL PICKUP	2-AXLE 4-TIRE	2-AXLE 6-TIRE	3-AXLE	3-AXLE	4-AXLE	5-AXLE
ARKANSAS	74	5.7	0.0	14.9	33.9	30.0	39.8	58.5
	73	6.2	7.7	15.8	34.6	30.9	41.1	58.0
	72	5.6	8.9	15.6	30.5	28.8	40.4	58.6
	71	5.0	9.9	15.3	33.1	28.1	37.3	55.9
	70	5.4	6.1	15.1	32.0	28.6	39.3	56.6
LOUISIANA	74	5.7	7.0	15.5	35.1	32.8	47.8	70.1
	73	5.5	7.9	16.1	32.5	33.7	45.6	68.9
	72	5.5	7.8	15.6	34.4	31.7	53.0	70.0
	71	5.6	8.0	15.6	32.5	34.3	47.4	68.5
	70	5.6	7.1	16.4	33.0	34.2	48.4	71.0
NEW MEXICO	74	6.4	8.0	15.6	37.0	31.8	48.1	72.2
	73	6.2	8.8	16.0	32.7	32.5	47.1	71.5
	72	6.0	7.7	14.9	36.0	33.0	47.4	70.1
	71	6.0	7.9	15.4	39.4	34.5	50.4	71.8
	70	5.8	7.9	15.3	34.6	37.2	48.5	72.0
OKLAHOMA	74	5.9	9.0	16.1	34.5	31.4	40.6	62.9
	73	5.0	8.9	16.1	35.4	31.5	41.2	63.7
	72	5.8	11.3	15.3	34.5	31.2	42.7	64.3
	71	4.8	8.0	16.4	36.1	31.6	41.9	62.7
	70	7.8	11.2	16.4	34.8	31.7	43.4	62.5
TEXAS	74	6.8	8.9	16.1	31.7	30.2	40.7	55.9
	73	5.8	8.5	15.3	32.5	31.1	43.6	58.5
	72	6.2	7.6	16.0	32.6	30.1	39.5	55.0
	71	5.8	7.9	15.5	29.3	30.5	40.1	55.6
	70	5.4	6.8	14.2	28.7	29.2	39.2	53.2

TABLE 2 - REGIONAL SUMMARY OF WEIGHTS OF LOADED TRUCKS (IN 1,000LBS.) BY STATE AND VEHICLE TYPE, 1970-1974
REGION 07

STATE	YEAR	VEHICLE TYPES						
		SINGLE UNIT			TRACTOR - SEMITRAILER COMBINATIONS			
		PANEL PICKUP	2-AXLE 4-TIRE	2-AXLE 6-TIRE	3-AXLE	3-AXLE	4-AXLE	5-AXLE
IOWA	74	5.2	6.7	15.3	34.5	30.7	41.3	62.6
	73	5.3	6.6	15.3	35.9	30.3	41.3	62.2
	72	5.4	6.6	15.1	36.0	31.9	41.8	62.6
	71	5.6	6.7	15.1	35.9	32.2	42.2	62.9
	70	2.6	3.2	7.4	17.1	16.0	21.6	31.2
KANSAS	74	5.6	8.1	14.9	32.2	30.5	40.1	61.1
	73	5.9	6.8	15.5	36.4	29.9	40.9	61.9
	72	5.5	7.6	15.0	36.1	31.0	40.9	61.5
	71	5.5	7.4	15.8	34.5	31.4	42.4	62.0
	70	5.5	7.0	14.8	30.2	31.5	40.0	60.6
MISSOURI	74	6.8	8.1	16.4	37.0	31.9	40.7	59.9
	73	6.3	8.1	15.5	36.7	30.7	41.6	60.7
	72	5.9	7.5	15.4	35.2	31.5	40.5	58.8
	71	5.9	7.5	15.4	35.2	31.5	40.5	58.8
	70	6.0	6.9	15.3	33.3	30.9	40.5	58.3
NEBRASKA	74	5.9	7.2	15.6	35.0	26.1	41.0	63.2
	73	5.5	6.9	16.0	38.0	26.2	43.6	63.9
	72	5.4	6.7	15.0	32.5	26.6	40.6	63.8
	71	5.2	5.5	14.8	33.4	26.7	40.1	63.8
	70	5.1	6.7	14.9	31.5	29.5	43.0	62.5

TABLE 2 - REGIONAL SUMMARY OF WEIGHTS OF LOADED TRUCKS (IN 1,000LBS.) BY STATE AND VEHICLE TYPE, 1970-1974
REGION 08

STATE	YEAR	VEHICLE TYPES						
		SINGLE UNIT			TRACTOR - SEMITRAILER COMBINATIONS			
		PANEL PICKUP	2-AXLE 4-TIRE	2-AXLE 6-TIRE	3-AXLE	3-AXLE	4-AXLE	5-AXLE
COLORADO	74	6.3	7.6	14.9	35.3	35.0	44.8	66.3
	73	6.5	13.9	16.2	38.0	34.0	43.6	67.1
	72	5.7	8.2	14.4	33.3	30.2	41.7	62.3
	71	5.7	8.2	14.4	33.3	30.2	41.7	62.3
	70	6.0	8.7	15.5	34.2	30.1	42.1	63.9
MONTANA	74	5.3	8.7	16.3	37.7	32.0	41.1	65.7
	73	6.6	8.0	16.3	36.9	28.1	37.8	64.0
	72	4.8	9.9	16.4	34.6	31.2	39.5	64.4
	71	5.5	0.0	17.5	34.0	30.7	38.7	65.3
	70	5.9	6.0	16.2	30.5	31.2	38.7	64.1
NORTH DAKOTA	74	5.8	6.0	17.5	35.7	31.9	40.4	64.4
	73	5.7	7.0	16.1	33.6	30.4	39.0	64.9
	72	5.9	6.3	16.8	34.2	32.0	40.5	65.3
	71	6.0	7.0	17.1	33.4	31.7	41.4	66.7
	70	5.6	6.5	17.2	33.3	33.2	41.8	66.7
SOUTH DAKOTA	74	5.7	8.0	16.1	33.1	30.1	37.8	62.4
	73	5.9	7.0	16.5	34.8	31.3	38.7	63.1
	72	5.8	7.2	15.4	32.5	29.4	39.4	62.4
	71	6.1	6.3	15.8	31.8	29.6	39.2	62.8
	70	5.5	6.5	15.9	33.5	30.5	41.1	64.1
UTAH	74	5.7	7.6	15.3	37.8	26.1	36.7	65.1
	73	4.5	6.3	11.0	27.5	19.9	34.2	62.5
	72	4.5	6.3	11.0	27.5	19.9	34.2	62.5
	71	5.5	6.8	13.2	37.2	26.6	39.6	64.1
	70	5.7	6.2	13.7	35.3	28.7	41.0	65.8
WYOMING	74	6.4	15.3	0.0	33.5	28.2	41.4	61.1
	73	6.1	15.5	0.0	36.1	29.3	44.8	60.3
	72	6.1	14.7	0.0	33.2	30.4	42.1	59.6
	71	6.1	14.7	0.0	33.2	30.4	42.1	59.6
	70	5.7	6.1	15.1	36.8	30.9	45.6	61.2

TABLE 2 - REGIONAL SUMMARY OF WEIGHTS OF LOADED TRUCKS (IN 1,000LBS.) BY STATE AND VEHICLE TYPE, 1970-1974
REGION 09

STATE	YEAR	VEHICLE TYPES						
		SINGLE UNIT				TRACTOR - SEMITRAILER COMBINATIONS		
		PANEL PICKUP	2-AXLE 4-TIRE	2-AXLE 6-TIRE	3-AXLE	3-AXLE	4-AXLE	5-AXLE
ARIZONA	74	5.6	7.0	15.1	39.4	29.2	37.4	51.6
	73	5.9	8.4	16.8	44.2	29.5	50.6	78.8
	72	5.5	7.3	16.5	42.4	31.6	52.0	79.5
	71	5.8	5.5	15.7	37.7	33.6	50.4	80.0
	70	5.6	6.7	15.5	35.7	33.3	42.2	65.0
CALIFORNIA	74	5.7	6.0	14.4	30.1	27.0	35.8	61.5
	73	5.2	7.3	14.5	29.8	27.4	37.5	61.6
	72	5.1	6.1	14.0	26.7	26.5	37.1	62.4
	71	4.9	12.9	14.1	29.4	26.8	37.1	62.4
	70	5.4	7.1	14.1	31.0	27.7	37.9	59.9
HAWAII	74	5.4	6.8	14.6	42.3	0.0	59.9	68.3
	73	5.3	6.6	13.8	39.6	31.1	54.8	81.1
	72	5.0	6.5	14.5	40.6	29.6	51.1	74.1
	71	5.3	6.7	14.8	41.0	29.9	49.2	69.1
	70	5.1	6.7	15.0	39.6	32.3	49.2	70.5
NEVADA	74	6.1	0.0	16.1	36.5	34.6	42.1	66.3
	73	6.7	7.2	15.4	38.4	32.2	42.3	66.5
	72	6.7	7.2	15.4	38.4	32.2	42.3	66.5
	71	7.1	7.4	15.7	39.1	33.2	44.2	67.1
	70	7.0	7.2	15.4	34.5	33.1	44.5	67.2

TABLE 2 - REGIONAL SUMMARY OF WEIGHTS OF LOADED TRUCKS (IN 1,000LBS.) BY STATE AND VEHICLE TYPE, 1970-1974
REGION 10

STATE	YEAR	VEHICLE TYPES						
		SINGLE UNIT				TRACTOR - SEMITRAILER COMBINATIONS		
		PANEL PICKUP	2-AXLE 4-TIRE	2-AXLE 6-TIRE	3-AXLE	3-AXLE	4-AXLE	5-AXLE
ALASKA	74	6.2	0.0	15.6	33.6	22.5	41.4	54.2
	73	6.2	0.0	15.6	33.6	22.5	41.4	54.2
	72	6.8	0.0	16.3	28.6	21.2	32.5	55.9
	71	6.8	0.0	16.3	28.6	21.2	32.5	55.9
	70	6.8	0.0	16.3	28.6	21.2	32.5	55.9
IDAHO	74	0.0	0.0	14.5	38.4	28.6	37.7	65.3
	73	0.0	0.0	14.8	38.3	28.8	39.0	66.1
	72	0.0	7.1	14.4	38.8	28.6	40.2	64.4
	71	5.2	6.9	15.2	34.6	30.4	39.7	64.9
	70	5.2	8.0	14.4	32.6	27.8	41.1	62.8
OREGON	74	7.4	7.1	15.0	34.3	27.2	35.9	68.2
	73	6.0	7.0	14.8	39.2	29.8	40.6	67.2
	72	5.4	6.9	14.7	35.6	26.7	37.9	67.7
	71	5.7	6.9	14.7	38.8	29.1	40.3	67.7
	70	5.9	7.2	14.6	37.3	30.6	39.3	68.9
WASHINGTON	74	6.4	0.0	15.4	34.2	32.3	39.4	60.1
	73	6.8	0.0	14.6	36.9	28.1	40.8	62.2
	72	6.3	0.0	14.1	35.1	29.5	39.5	62.8
	71	6.3	0.0	15.3	33.6	31.2	40.2	61.0
	70	5.7	0.0	14.5	31.9	29.6	40.3	60.6

TABLE 2 - REGIONAL SUMMARY OF WEIGHTS OF LOADED TRUCKS (IN 1,000LBS.) BY STATE AND VEHICLE TYPE, 1970-1974
ALL REGIONS

STATE	YEAR	VEHICLE TYPES						
		SINGLE UNIT			TRACTOR - SEMITRAILER COMBINATIONS			
		PANEL PICKUP	2-AXLE 4-TIRE	2-AXLE 6-TIRE	3-AXLE	3-AXLE	4-AXLE	5-AXLE
UNITED STATES	74	5.9	8.8	15.7	38.2	30.5	43.2	62.0
	73	5.8	8.6	15.7	38.7	30.8	43.9	62.4
	72	5.7	7.9	15.6	38.0	31.0	44.2	61.9
	71	5.7	7.5	15.6	37.7	31.4	44.6	61.9
	70	5.2	6.8	14.9	35.3	30.5	43.3	57.8

TABLE 3 - REGIONAL SUMMARY OF WEIGHTS OF EMPTY TRUCKS (IN 1,000LBS.) BY STATE AND VEHICLE TYPE, 1970-1974
REGION 01

STATE	YEAR	VEHICLE TYPES						
		SINGLE UNIT				TRACTOR - SEMITRAILER COMBINATIONS		
		PANEL PICKUP	2-AXLE 4-TIRE	2-AXLE 6-TIRE	3-AXLE	3-AXLE	4-AXLE	5-AXLE
CONNECTICUT	74	5.6	6.3	12.5	25.5	25.2	30.7	35.6
	73	5.3	6.9	12.7	28.3	25.7	30.2	34.9
	72	4.9	5.5	12.5	26.1	24.3	29.0	33.0
	71	4.9	6.1	12.4	27.4	23.0	29.2	35.0
	70	4.8	6.8	12.3	25.1	23.9	29.5	33.7
MAINE	74	4.6	6.3	10.7	19.8	20.5	25.6	29.1
	73	4.4	6.1	10.9	19.8	21.9	28.6	34.2
	72	4.4	5.5	10.8	19.5	21.5	25.8	30.2
	71	4.4	6.2	10.7	19.4	22.3	25.4	30.3
	70	4.3	5.2	10.6	19.8	21.8	25.4	30.9
MASSACHUSETTS	74	4.5	6.0	11.5	28.9	22.3	25.8	31.0
	73	4.3	5.4	10.8	26.4	20.1	25.8	30.4
	72	4.1	5.2	10.6	25.8	20.5	25.6	30.2
	71	4.1	5.2	10.3	25.3	20.6	25.2	29.5
	70	4.1	5.2	10.6	26.5	20.5	25.6	30.2
NEW HAMPSHIRE	74	4.8	9.0	11.4	24.2	20.7	30.2	32.2
	73	4.8	5.8	11.0	23.8	20.8	28.7	34.4
	72	4.9	7.1	11.1	25.3	23.4	30.1	34.6
	71	4.5	6.8	11.1	25.0	20.8	31.1	35.3
	70	4.6	7.0	11.2	23.8	21.7	29.2	34.1
NEW JERSEY	74	5.8	6.4	12.7	27.5	26.0	30.5	35.9
	73	5.6	6.6	12.9	27.0	25.3	30.5	34.7
	72	5.4	6.7	12.8	26.3	25.3	29.9	34.1
	71	5.9	7.8	12.8	26.8	25.7	30.0	35.2
	70	5.2	7.2	12.5	24.7	25.1	28.6	33.1
NEW YORK	74	5.1	6.3	11.2	22.9	20.7	25.4	28.7
	73	4.8	6.5	11.6	22.3	21.8	27.0	30.5
	72	4.8	6.4	11.2	24.0	22.1	27.0	29.9
	71	4.2	5.3	10.7	22.9	21.8	25.8	29.0
	70	4.2	5.3	10.7	22.9	21.8	25.8	29.0
RHODE ISLAND	74	5.3	8.6	13.1	15.0	24.3	39.9	49.4
	73	5.3	6.4	11.4	30.0	23.4	29.3	33.2
	72	4.9	6.3	12.0	27.6	25.3	28.9	32.6
	71	4.4	6.9	9.3	24.1	24.9	27.8	32.7
	70	6.5	9.1	10.8	27.3	26.6	30.0	36.1
VERMONT	74	4.6	5.4	10.8	21.8	21.7	27.4	30.6
	73	4.3	5.4	10.8	21.1	23.5	25.9	28.8
	72	4.3	5.4	10.8	21.1	23.5	25.9	28.8
	71	4.4	5.6	10.5	19.5	22.8	25.7	29.2
	70	4.4	5.6	10.5	19.5	22.8	25.7	29.2
PUERTO RICO	74	5.4	5.9	10.6	31.5	26.7	37.6	43.5
	73	5.4	5.9	10.6	31.5	26.7	37.6	43.5
	72	4.6	7.2	10.8	26.4	26.1	39.8	46.1
	71	4.6	7.2	10.8	26.4	26.1	39.8	46.1
	70	5.4	7.0	10.7	30.7	32.4	47.7	54.1

TABLE 3 - REGIONAL SUMMARY OF WEIGHTS OF EMPTY TRUCKS (IN 1,000LBS.) BY STATE AND VEHICLE TYPE, 1970-1974
REGION 03

STATE	YEAR	VEHICLE TYPES						
		SINGLE UNIT			TRACTOR - SEMITRAILER COMBINATIONS			
		PANEL PICKUP	2-AXLE 4-TIRE	2-AXLE 6-TIRE	3-AXLE	3-AXLE	4-AXLE	5-AXLE
DELAWARE	74	5.4	6.9	12.4	24.4	25.7	32.7	40.3
	73	5.3	6.3	11.8	25.1	23.9	33.9	39.3
	72	5.3	7.3	11.0	21.9	23.8	27.0	33.8
	71	4.9	6.2	11.1	19.8	22.7	26.8	33.1
	70	5.0	6.5	11.3	22.9	22.1	26.9	33.3
MARYLAND	74	5.5	6.0	12.6	26.8	25.9	29.6	34.4
	73	5.6	7.4	12.4	24.2	25.3	28.5	33.9
	72	5.6	7.4	12.4	24.2	25.3	28.5	33.9
	71	5.7	8.3	12.1	24.7	25.6	28.7	33.5
	70	5.8	6.6	12.2	25.5	24.6	28.7	34.8
PENNSYLVANIA	74	5.3	9.1	11.4	22.7	23.8	28.5	32.8
	73	5.3	9.1	11.4	22.7	23.8	28.5	32.8
	72	4.7	5.5	10.2	20.4	22.4	28.1	34.2
	71	4.6	6.6	10.3	19.4	22.3	25.4	30.3
	70	4.4	6.2	10.2	19.6	20.5	25.2	29.1
VIRGINIA	74	4.4	5.1	10.8	19.4	28.0	26.1	28.8
	73	4.4	5.1	10.8	19.1	22.0	25.5	29.0
	72	4.3	6.0	10.4	18.5	22.1	25.5	29.0
	71	4.4	4.9	10.0	17.9	23.2	24.9	29.1
	70	4.3	5.1	10.0	17.6	22.6	24.6	29.3
WEST VIRGINIA	74	5.3	6.5	11.0	20.3	24.8	28.8	33.4
	73	5.5	7.3	10.9	20.8	25.4	29.2	33.6
	72	5.1	7.3	10.4	21.3	23.8	28.5	33.0
	71	5.6	6.8	11.6	22.2	27.9	31.2	34.2
	70	4.9	6.2	10.5	18.5	24.1	27.7	32.0
DISTRICT OF COLUMBIA	74	7.1	13.6	14.2	29.3	32.0	29.9	33.6
	73	7.1	13.6	14.2	29.3	32.0	29.9	33.6
	72	6.5	11.5	0.0	28.9	23.9	28.7	31.7
	71	5.7	11.2	0.0	28.8	22.6	27.7	32.2
	70	4.8	8.8	11.7	22.6	21.6	25.9	28.9

TABLE 3 - REGIONAL SUMMARY OF WEIGHTS OF EMPTY TRUCKS (IN 1,000LBS.) BY STATE AND VEHICLE TYPE, 1970-1974
REGION 04

STATE	YEAR	VEHICLE TYPES						
		SINGLE UNIT				TRACTOR - SEMITRAILER COMBINATIONS		
		PANEL PICKUP	2-AXLE 4-TIRE	2-AXLE 6-TIRE	3-AXLE	3-AXLE	4-AXLE	5-AXLE
ALABAMA	74	4.6	6.3	9.4	17.5	21.8	23.7	26.9
	73	4.5	4.9	9.4	16.7	20.1	23.1	26.6
	72	4.6	5.6	9.4	17.3	20.4	22.9	26.6
	71	4.5	7.7	9.2	17.2	19.2	22.6	26.8
	70	4.6	6.0	8.6	16.5	19.4	22.2	26.4
FLORIDA	74	4.4	5.0	10.4	18.0	22.1	24.5	30.4
	73	4.4	5.0	10.4	18.0	22.1	24.5	30.4
	72	4.3	5.9	10.0	18.9	22.3	25.0	31.1
	71	4.3	5.9	10.0	18.9	22.3	25.0	31.1
	70	4.2	5.4	9.9	18.0	21.9	25.2	30.7
GEORGIA	74	4.9	7.8	10.9	21.6	24.9	28.4	36.2
	73	4.6	5.3	10.8	22.3	25.1	27.0	32.7
	72	4.4	5.8	10.3	21.4	22.4	25.6	31.5
	71	4.2	6.0	9.9	19.5	23.9	25.3	31.2
	70	4.3	6.4	8.6	19.2	22.5	26.4	32.2
KENTUCKY	74	4.6	6.7	10.6	19.2	24.0	25.7	30.0
	73	4.6	6.0	10.3	18.2	23.7	25.6	29.1
	72	4.9	5.7	10.4	18.7	22.3	25.8	29.1
	71	4.6	6.3	10.0	16.0	22.0	25.4	28.3
	70	4.5	5.3	10.3	18.6	22.2	24.3	28.9
MISSISSIPPI	74	4.5	5.4	10.6	16.9	22.7	24.3	28.2
	73	5.0	7.3	10.5	17.5	21.5	25.1	28.6
	72	4.8	11.2	11.0	17.2	21.1	25.4	28.9
	71	4.9	10.5	10.3	18.2	21.3	24.3	29.4
	70	4.5	5.6	10.2	19.1	19.8	23.7	30.3
NORTH CAROLINA	74	4.8	6.3	10.8	19.4	24.4	26.4	30.5
	73	4.7	7.1	10.7	19.5	23.8	26.3	30.5
	72	4.3	5.7	10.3	18.3	23.5	25.9	29.9
	71	4.2	5.5	10.3	18.5	22.9	25.6	30.2
	70	4.3	5.9	10.4	18.1	22.1	25.9	30.8
SOUTH CAROLINA	74	5.0	5.7	11.1	23.4	24.2	28.0	31.1
	73	4.8	6.3	10.4	23.0	24.2	28.0	30.9
	72	4.9	6.5	10.4	22.5	24.3	28.2	31.1
	71	4.8	5.1	10.3	21.4	22.6	28.2	31.1
	70	4.9	5.0	11.0	20.2	23.7	29.0	30.7
TENNESSEE	74	4.8	5.7	9.5	19.6	24.6	27.3	31.5
	73	5.1	6.1	9.7	18.5	23.4	26.6	31.1
	72	4.8	6.0	9.7	18.7	23.6	25.8	30.5
	71	5.1	4.8	10.2	19.5	21.3	26.0	31.6
	70	4.9	4.4	9.3	18.4	22.7	25.0	29.8

TABLE 3 - REGIONAL SUMMARY OF WEIGHTS OF EMPTY TRUCKS (IN 1,000LBS.) BY STATE AND VEHICLE TYPE, 1970-1974
REGION 05

STATE	YEAR	VEHICLE TYPES						
		SINGLE UNIT				TRACTOR - SEMITRAILER COMBINATIONS		
		PANEL PICKUP	2-AXLE 4-TIRE	2-AXLE 6-TIRE	3-AXLE	3-AXLE	4-AXLE	5-AXLE
ILLINOIS	74	4.9	5.9	10.4	18.1	21.7	25.5	28.7
	73	4.6	8.0	10.0	17.9	20.8	24.3	28.6
	72	4.7	5.9	10.5	17.1	21.8	24.9	28.5
	71	4.6	6.6	10.5	18.4	22.2	24.6	28.2
	70	4.6	5.5	10.2	17.4	20.5	24.3	28.6
INDIANA	74	4.6	5.8	10.5	16.5	21.9	25.4	29.5
	73	4.4	5.4	10.1	16.6	22.5	25.1	29.1
	72	4.5	4.8	9.6	17.2	22.2	25.6	30.0
	71	4.2	5.2	10.0	16.5	20.1	23.2	27.4
	70	4.1	5.1	9.5	17.2	21.4	23.7	28.2
MICHIGAN	74	4.9	5.7	10.5	21.2	20.5	25.2	31.0
	73	4.7	5.7	10.6	19.8	20.0	25.4	31.2
	72	4.5	5.7	10.3	18.9	21.2	25.2	30.1
	71	4.5	6.1	10.6	19.9	20.8	24.9	30.1
	70	4.8	4.9	9.9	17.9	20.4	24.3	29.4
MINNESOTA	74	0.0	0.0	11.6	19.4	21.0	25.4	29.4
	73	4.7	6.0	11.6	18.4	20.7	25.6	28.8
	72	4.5	5.6	11.0	18.1	19.6	25.9	29.0
	71	4.5	5.5	10.5	18.4	19.7	23.8	27.5
	70	4.9	5.6	10.3	19.8	22.1	28.1	32.3
OHIO	74	4.6	5.3	10.0	17.7	23.4	26.3	31.2
	73	4.6	5.4	10.4	17.7	23.7	26.4	30.7
	72	4.6	5.4	9.9	17.6	23.4	26.9	31.1
	71	4.9	6.0	10.7	17.9	23.6	26.4	31.9
	70	4.7	5.7	10.4	16.8	22.9	26.4	31.4
WISCONSIN	74	5.0	5.7	11.1	18.8	22.4	26.0	29.9
	73	4.9	8.2	10.4	18.7	22.6	25.4	31.1
	72	4.8	5.9	10.5	18.7	21.8	25.8	30.8
	71	4.8	7.0	10.7	19.2	21.9	25.4	29.9
	70	4.7	6.7	10.5	18.3	21.5	25.4	29.7

TABLE 3 - REGIONAL SUMMARY OF WEIGHTS OF EMPTY TRUCKS (IN 1,000LBS.) BY STATE AND VEHICLE TYPE, 1970-1974
REGION 06

STATE	YEAR	VEHICLE TYPES						
		SINGLE UNIT			TRACTOR - SEMITRAILER COMBINATIONS			
		PANEL PICKUP	2-AXLE 4-TIRE	2-AXLE 6-TIRE	3-AXLE	3-AXLE	4-AXLE	5-AXLE
ARKANSAS	74	4.9	0.0	10.1	17.8	21.4	23.2	29.1
	73	5.2	7.1	10.5	17.0	19.8	24.2	28.5
	72	4.7	7.2	10.5	17.4	22.4	23.9	29.7
	71	4.2	9.0	9.8	16.1	20.7	22.3	28.1
	70	4.4	4.6	9.9	15.8	19.2	21.8	27.4
LOUISIANA	74	4.8	5.6	10.9	17.3	24.0	25.8	32.0
	73	4.8	5.9	10.9	18.3	25.7	25.1	31.9
	72	4.7	6.3	10.8	18.5	22.8	25.0	32.3
	71	4.9	6.2	10.7	18.2	24.3	23.5	32.0
	70	4.6	5.2	9.8	15.4	20.8	24.1	31.0
NEW MEXICO	74	5.3	7.4	11.5	23.0	25.8	31.1	36.8
	73	4.9	6.1	10.9	21.9	24.3	30.9	35.3
	72	4.7	5.5	10.1	20.7	25.2	29.2	34.5
	71	5.0	6.4	11.5	22.7	26.8	30.1	36.1
	70	4.7	6.1	10.9	24.8	25.5	29.3	35.1
OKLAHOMA	74	4.8	6.4	11.2	18.4	23.3	26.2	30.5
	73	4.6	5.3	10.5	18.3	21.5	25.0	29.6
	72	4.6	6.2	10.7	16.9	21.9	25.0	30.8
	71	4.3	6.7	10.8	18.2	21.3	25.5	30.5
	70	4.9	8.9	10.6	18.6	22.1	25.9	30.9
TEXAS	74	5.6	6.2	10.8	17.1	21.1	22.0	26.4
	73	5.0	7.8	10.1	16.4	21.5	23.0	27.4
	72	5.0	7.1	10.1	17.4	21.2	22.6	27.6
	71	4.5	6.4	10.0	16.5	20.2	22.5	27.7
	70	4.4	5.6	9.7	15.3	19.0	21.5	26.2

TABLE 3 - REGIONAL SUMMARY OF WEIGHTS OF EMPTY TRUCKS (IN 1,000LBS.) BY STATE AND VEHICLE TYPE, 1970-1974
REGION 07

STATE	YEAR	VEHICLE TYPES						
		SINGLE UNIT				TRACTOR - SEMITRAILER COMBINATIONS		
		PANEL PICKUP	2-AXLE 4-TIRE	2-AXLE 6-TIRE	3-AXLE	3-AXLE	4-AXLE	5-AXLE
IOWA	74	4.6	5.6	10.9	18.2	23.2	27.0	30.8
	73	4.6	5.4	10.5	17.6	22.5	25.8	30.1
	72	4.6	5.2	10.5	17.3	21.6	25.1	30.2
	71	4.5	5.1	10.2	16.7	21.0	25.1	29.8
	70	2.2	2.4	5.0	8.3	10.5	12.4	14.7
KANSAS	74	4.6	6.5	10.6	17.5	20.2	24.5	28.4
	73	4.5	7.6	10.1	17.6	21.0	25.6	28.0
	72	4.5	6.7	10.6	16.5	21.1	24.1	28.3
	71	4.4	4.8	9.6	16.5	21.8	23.9	28.1
	70	4.3	6.2	10.1	15.9	20.8	23.1	28.2
MISSOURI	74	5.5	6.3	11.3	17.8	22.4	26.4	30.4
	73	5.0	5.5	10.2	17.7	23.2	26.3	29.1
	72	4.7	5.5	10.2	16.6	22.0	24.8	29.0
	71	4.7	5.5	10.2	16.6	22.0	24.8	29.0
	70	4.7	5.5	10.4	15.8	22.2	24.7	28.6
NEBRASKA	74	5.0	5.7	11.1	17.2	19.5	24.7	29.0
	73	4.8	6.6	11.0	18.0	20.5	23.4	29.0
	72	4.6	7.0	10.1	16.9	19.9	24.9	31.4
	71	4.6	4.6	9.9	16.6	20.4	24.1	31.1
	70	4.3	5.3	9.6	16.9	20.2	24.7	31.6

TABLE 3 - REGIONAL SUMMARY OF WEIGHTS OF EMPTY TRUCKS (IN 1,000LBS.) BY STATE AND VEHICLE TYPE, 1970-1974
REGION 08

STATE	YEAR	VEHICLE TYPES						
		SINGLE UNIT			TRACTOR - SEMITRAILER COMBINATIONS			
		PANEL PICKUP	2-AXLE 4-TIRE	2-AXLE 6-TIRE	3-AXLE	3-AXLE	4-AXLE	5-AXLE
COLORADO	74	5.5	6.4	10.5	20.1	24.6	28.7	33.3
	73	5.7	10.3	10.6	20.0	24.7	28.9	33.1
	72	4.7	7.8	9.5	18.0	20.9	23.6	29.2
	71	4.7	7.8	9.5	18.0	20.9	23.6	29.2
	70	4.8	6.0	9.2	18.3	21.6	25.6	29.4
MONTANA	74	10.2	0.0	11.6	20.7	20.7	27.7	29.9
	73	5.0	5.4	10.4	18.5	21.6	25.2	30.6
	72	4.7	0.0	10.7	18.3	19.9	24.9	30.0
	71	4.6	5.8	10.1	19.8	24.7	26.2	29.8
	70	4.6	13.6	9.8	18.6	19.3	26.3	29.3
NORTH DAKOTA	74	4.1	4.9	11.3	17.9	23.3	25.8	29.6
	73	4.6	5.6	10.6	18.6	21.9	26.0	27.7
	72	4.8	5.2	10.6	16.9	21.7	25.8	27.4
	71	4.5	5.5	10.0	16.6	21.1	25.5	26.4
	70	4.6	5.2	10.6	16.6	21.0	24.6	26.7
SOUTH DAKOTA	74	4.5	5.4	10.4	17.0	19.6	23.6	28.4
	73	4.5	6.2	10.1	16.6	20.4	23.0	28.7
	72	4.5	5.4	9.8	17.4	21.1	23.1	29.3
	71	4.7	5.3	9.8	16.9	22.0	24.0	30.4
	70	4.6	5.2	10.2	17.3	20.9	24.8	29.4
UTAH	74	5.0	7.2	10.0	19.2	17.2	23.8	30.7
	73	4.2	6.0	7.5	14.9	14.4	19.9	28.8
	72	4.2	6.0	7.5	14.9	14.4	19.9	28.8
	71	5.4	5.5	9.4	19.5	16.4	25.4	31.9
	70	5.2	5.4	9.7	17.9	18.9	22.6	30.4
WYOMING	74	5.0	11.0	0.0	24.2	20.9	26.3	30.3
	73	5.2	10.6	0.0	26.1	19.3	25.5	28.8
	72	5.0	9.6	0.0	32.3	18.4	24.5	28.8
	71	5.0	9.6	0.0	32.3	18.4	24.5	28.8
	70	4.4	5.6	9.2	20.9	19.6	26.2	30.6

TABLE 3 - REGIONAL SUMMARY OF WEIGHTS OF EMPTY TRUCKS (IN 1,000LBS.) BY STATE AND VEHICLE TYPE, 1970-1974
REGION 09

STATE	YEAR	VEHICLE TYPES						
		SINGLE UNIT				TRACTOR - SEMITRAILER COMBINATIONS		
		PANEL PICKUP	2-AXLE 4-TIRE	2-AXLE 6-TIRE	3-AXLE	3-AXLE	4-AXLE	5-AXLE
ARIZONA	74	4.6	6.0	10.8	18.7	23.5	23.4	25.9
	73	4.8	5.7	10.0	23.2	21.4	30.6	38.7
	72	4.6	5.3	9.6	21.8	20.9	32.5	38.3
	71	4.7	6.6	10.1	20.7	20.7	31.5	39.8
	70	4.6	5.6	11.2	18.8	22.0	27.4	31.6
CALIFORNIA	74	4.4	7.4	10.2	18.5	20.7	25.7	30.3
	73	4.5	7.8	10.5	18.7	20.0	25.8	30.8
	72	4.4	4.9	10.4	17.5	19.9	24.2	30.0
	71	4.4	6.9	10.6	17.4	19.7	25.7	30.3
	70	4.7	6.6	10.2	18.7	19.6	25.0	28.1
HAWAII	74	4.6	5.4	10.8	24.7	24.2	31.0	42.7
	73	4.4	5.6	10.4	21.9	19.2	30.8	46.1
	72	4.3	5.6	11.2	22.2	21.4	29.2	40.2
	71	4.4	5.6	11.0	23.8	22.2	29.2	36.8
	70	4.4	5.5	10.4	22.9	24.6	29.7	37.3
NEVADA	74	5.1	5.5	10.7	19.7	21.4	28.9	31.1
	73	5.3	7.4	10.3	18.9	22.9	27.3	30.2
	72	5.3	7.4	10.3	18.9	22.9	27.3	30.2
	71	4.9	5.3	9.2	19.3	20.5	25.9	30.3
	70	4.8	5.5	9.1	19.1	22.0	25.9	30.1

TABLE 3 - REGIONAL SUMMARY OF WEIGHTS OF EMPTY TRUCKS (IN 1,000LBS.) BY STATE AND VEHICLE TYPE, 1970-1974
REGION 10

STATE	YEAR	VEHICLE TYPES						
		SINGLE UNIT			TRACTOR - SEMITRAILER COMBINATIONS			
		PANEL PICKUP	2-AXLE 4-TIRE	2-AXLE 6-TIRE	3-AXLE	3-AXLE	4-AXLE	5-AXLE
ALASKA	74	4.6	0.0	9.8	17.5	19.2	21.2	32.9
	73	4.6	0.0	9.8	17.5	19.2	21.2	32.9
	72	4.8	0.0	11.0	20.4	18.8	23.4	33.1
	71	4.8	0.0	11.0	20.4	18.8	23.4	33.1
	70	4.8	0.0	11.0	20.4	18.8	23.4	33.1
IDAHO	74	0.0	0.0	10.0	19.1	19.7	24.0	29.0
	73	0.0	0.0	10.0	18.4	19.2	22.5	28.7
	72	4.6	5.7	9.5	18.2	18.4	22.7	28.6
	71	4.4	5.8	9.9	18.5	19.5	23.3	28.8
	70	4.3	6.2	9.4	18.3	18.9	24.4	28.8
OREGON	74	4.9	5.7	10.3	19.3	19.7	19.6	28.8
	73	4.7	5.9	9.8	19.1	20.1	23.9	28.5
	72	4.7	5.8	10.2	18.6	19.6	22.3	28.7
	71	4.6	6.0	10.1	19.5	19.5	23.6	28.5
	70	4.7	6.3	9.6	19.1	19.7	25.0	28.7
WASHINGTON	74	4.8	0.0	10.1	19.5	21.3	25.4	28.1
	73	4.3	0.0	10.7	19.2	22.0	25.6	28.7
	72	4.8	0.0	9.8	18.5	21.2	22.8	28.5
	71	4.5	0.0	9.9	18.4	20.0	25.7	28.7
	70	4.3	0.0	10.0	18.1	21.0	25.6	28.5

TABLE 3 - REGIONAL SUMMARY OF WEIGHTS OF EMPTY TRUCKS (IN 1,000LBS.) BY STATE AND VEHICLE TYPE, 1970-1974
ALL REGIONS

STATE	YEAR	VEHICLE TYPES						
		SINGLE UNIT				TRACTOR - SEMITRAILER COMBINATIONS		
		PANEL PICKUP	2-AXLE 4-TIRE	2-AXLE 6-TIRE	3-AXLE	3-AXLE	4-AXLE	5-AXLE
UNITED STATES	74	4.9	6.5	10.9	20.1	22.9	26.7	30.7
	73	4.8	6.8	10.8	20.0	22.5	26.7	30.7
	72	4.6	6.1	10.5	19.4	22.3	26.4	30.4
	71	4.6	5.8	10.5	19.4	22.3	26.1	30.2
	70	4.4	5.2	10.1	18.1	21.2	25.4	28.5

TABLE 4 - TRUCKS PER THOUSAND VEHICLES WITH TOTAL GROSS WEIGHTS OVER 50,000 LBS.
BY REGION AND STATE 1970 - 1974

STATE	74	73	72	71	70
CONNECTICUT	213	214	203	230	214
MAINE	144	161	186	144	151
MASSACHUSETTS	125	108	105	107	117
NEW HAMPSHIRE	173	175	148	151	178
NEW JERSEY	234	251	245	258	240
NEW YORK	133	132	139	152	152
RHODE ISLAND	141	183	200	195	174
VERMONT	152	120	120	122	122
PUERTO RICO	142	142	109	109	148
REGION 01	184	192	191	192	188
DELAWARE	288	243	201	168	131
MARYLAND	310	227	227	246	280
PENNSYLVANIA	326	326	275	205	208
VIRGINIA	202	197	175	172	148
WEST VIRGINIA	275	263	237	245	231
DISTRICT OF COLUMBIA	138	138	127	80	70
REGION 03	272	254	224	204	199
ALABAMA	203	159	146	139	117
FLORIDA	193	193	159	159	140
GEORGIA	268	212	189	182	176
KENTUCKY	337	366	344	307	266
MISSISSIPPI	322	333	271	291	202
NORTH CAROLINA	160	174	166	135	111
SOUTH CAROLINA	142	108	136	104	114
TENNESSEE	268	266	267	272	265
REGION 04	229	221	206	182	163
ILLINOIS	261	265	235	249	229
INDIANA	276	275	279	204	223
MICHIGAN	215	205	170	197	193
MINNESOTA	291	344	296	213	247
OHIO	265	250	239	221	229
WISCONSIN	257	231	210	212	228
REGION 05	260	256	234	218	227

TABLE 4 - TRUCKS PER THOUSAND VEHICLES WITH TOTAL GROSS WEIGHTS OVER 50,000 LBS.
BY REGION AND STATE 1970 - 1974

STATE	74	73	72	71	70
ARKANSAS	319	306	285	244	256
LOUISIANA	226	239	131	154	116
NEW MEXICO	268	256	240	245	226
OKLAHOMA	382	344	360	391	401
TEXAS	277	300	234	289	253
REGION 06	312	304	260	286	271
IOWA	313	313	300	305	0
KANSAS	321	295	234	192	205
MISSOURI	335	314	313	313	289
NEBRASKA	355	331	162	179	191
REGION 07	319	313	274	274	101
COLORADO	271	297	173	173	193
MONTANA	487	386	416	396	295
NORTH DAKOTA	355	290	297	317	304
SOUTH DAKOTA	197	213	148	152	145
UTAH	313	198	198	192	175
WYOMING	314	305	259	259	225
REGION 08	340	297	249	254	230
ARIZONA	248	342	310	341	367
CALIFORNIA	310	302	312	364	268
HAWAII	213	158	123	99	110
NEVADA	482	429	429	501	362
REGION 09	326	316	273	300	276
ALASKA	279	279	229	229	229
IDAHO	272	279	247	344	276
OREGON	486	420	429	412	440
WASHINGTON	364	360	362	335	319
REGION 10	371	348	342	361	346
ALL REGIONS	269	258	236	233	200

TABLE 5 - TRUCKS PER THOUSAND VEHICLES WITH TOTAL AXLE WEIGHTS OVER 22,000 LBS.
BY REGION AND STATE 1970 - 1974

STATE	74	73	72	71	70
CONNECTICUT	44	48	46	79	62
MAINE	15	34	31	28	32
MASSACHUSETTS	27	26	28	25	33
NEW HAMPSHIRE	71	94	98	83	99
NEW JERSEY	37	42	42	40	46
NEW YORK	14	17	19	21	21
RHODE ISLAND	43	57	46	54	47
VERMONT	36	27	27	40	40
PUERTO RICO	156	156	116	115	143
REGION 01	37	44	41	43	48
DELAWARE	113	90	33	25	23
MARYLAND	45	43	43	43	46
PENNSYLVANIA	17	17	13	6	5
VIRGINIA	2	1	1	1	1
WEST VIRGINIA	5	8	9	21	7
DISTRICT OF COLUMBIA	30	30	30	10	13
REGION 03	22	21	15	15	12
ALABAMA	6	3	21	23	14
FLORIDA	19	19	21	21	32
GEORGIA	47	19	19	12	18
KENTUCKY	6	1	2	4	2
MISSISSIPPI	1	8	2	15	10
NORTH CAROLINA	3	4	2	3	2
SOUTH CAROLINA	12	12	14	16	22
TENNESSEE	22	25	21	24	15
REGION 04	10	9	11	13	14
ILLINOIS	0	0	0	0	0
INDIANA	2	1	1	1	1
MICHIGAN	7	12	4	5	3
MINNESOTA	6	5	3	5	31
OHIO	11	11	12	11	13
WISCONSIN	4	4	5	4	2
REGION 05	6	7	5	6	9

TABLE 5 - TRUCKS PER THOUSAND VEHICLES WITH TOTAL AXLE WEIGHTS OVER 22,000 LBS.
BY REGION AND STATE 1970 - 1974

STATE	74	73	72	71	70
ARKANSAS	8	5	6	4	6
LOUISIANA	11	10	15	13	15
NEW MEXICO	36	29	21	30	23
OKLAHOMA	6	7	18	18	14
TEXAS	8	17	6	4	4
REGION 06	14	12	14	13	11
IOWA	3	1	0	0	0
KANSAS	2	2	3	1	0
MISSOURI	0	0	0	0	0
NEBRASKA	0	1	1	1	0
REGION 07	2	1	0	0	0
COLORADO	4	4	6	6	11
MONTANA	3	3	5	4	1
NORTH DAKOTA	2	0	0	0	0
SOUTH DAKOTA	1	0	3	7	0
UTAH	9	2	2	8	8
WYOMING	2	3	0	0	0
REGION 08	3	2	2	4	2
ARIZONA	4	84	80	99	5
CALIFORNIA	2	3	1	2	2
HAWAII	91	44	52	23	27
NEVADA	4	5	5	2	4
REGION 09	10	19	27	18	7
ALASKA	15	15	13	13	13
IDAHO	4	7	3	5	3
OREGON	2	0	1	1	1
WASHINGTON	0	0	0	0	0
REGION 10	3	3	2	3	2
ALL REGIONS	14	15	14	14	14

UNITED STATES

TABLE 6 - PERCENT CARRYING LOADS BY TRUCK AND BODY TYPES AND CLASS OF OPERATION

		INTERSTATE RURAL ROADS 1974 CLASS OF OPERATION									
BODY TYPE GROUP	TRUCK TYPE	PRIVATE		ICC-REG		NON-ICC-REG		OTHER		TOTAL	
		#	%	#	%	#	%	#	%	#	%
LIVESTOCK	SINGLE-UNIT	446	58.3	36	55.6	22	68.2	10	40.0	514	58.2
	SEMI-COMB	355	56.6	744	54.3	268	52.6	45	40.0	1412	54.1
	FULL-COMB	57	70.2	15	60.0	14	78.6	1	100.0	87	70.1
	TOTAL	858	58.4	795	54.5	304	54.9	56	41.1	2013	55.8
HOPPER	SINGLE-UNIT	418	55.0	49	53.1	58	48.3	8	62.5	533	54.2
	SEMI-COMB	819	56.4	1616	65.7	524	61.3	56	67.9	3015	62.5
	FULL-COMB	33	45.5	10	100.0	16	62.5	0	0.0	59	59.3
	TOTAL	1270	55.7	1675	65.6	598	60.0	64	67.2	3607	61.2
DUMP TRUCK	SINGLE-UNIT	1012	51.8	88	38.6	296	31.8	19	63.2	1415	46.9
	SEMI-COMB	458	50.2	260	56.9	51	25.5	26	50.0	795	50.8
	FULL-COMB	78	59.0	9	66.7	19	68.4	0	0.0	106	61.3
	TOTAL	1548	51.7	357	52.7	366	32.8	45	55.6	2316	48.9
REFRIGERATED VAN	SINGLE-UNIT	1301	72.5	127	74.0	112	78.6	26	50.0	1566	72.7
	SEMI-COMB	2676	72.4	6415	80.2	781	77.6	279	82.8	10151	78.0
	FULL-COMB	5	80.0	6	83.3	2	100.0	0	0.0	13	84.6
	TOTAL	3982	72.5	6548	80.0	895	77.8	305	80.0	11730	77.3
NON PETROLEUM TANKER	SINGLE-UNIT	226	56.2	30	63.3	36	66.7	3	66.7	295	58.3
	SEMI-COMB	1014	51.8	1899	53.4	166	50.0	90	47.8	3169	52.5
	FULL-COMB	51	45.1	48	60.4	23	43.5	2	50.0	124	50.8
	TOTAL	1291	52.3	1977	53.7	225	52.0	95	48.4	3588	53.0
PETROLEUM TANKER	SINGLE-UNIT	156	62.8	5	40.0	24	50.0	0	0.0	185	60.5
	SEMI-COMB	976	56.0	1226	54.4	186	46.8	28	60.7	2416	54.6
	FULL-COMB	180	57.2	188	59.0	51	56.9	2	100.0	421	58.2
	TOTAL	1312	57.0	1419	55.0	261	49.0	30	63.3	3022	55.4
AUTO CARRIER	SINGLE-UNIT	37	59.5	6	83.3	0	0.0	2	50.0	45	62.2
	SEMI-COMB	167	53.9	1152	61.0	28	64.3	39	48.7	1386	59.9
	FULL-COMB	2	100.0	64	75.0	2	50.0	0	0.0	68	75.0
	TOTAL	206	55.3	1222	61.9	30	63.3	41	48.8	1499	60.6
VAN	SINGLE-UNIT	4786	67.8	804	70.3	1082	75.1	105	63.8	6777	69.2
	SEMI-COMB	9329	68.8	21581	81.7	1820	74.0	913	78.4	33643	77.6
	FULL-COMB	81	79.0	49	65.3	34	67.6	1	100.0	165	72.7
	TOTAL	14196	68.5	22434	81.3	2936	74.3	1019	76.9	40585	76.2
FLAT BED	SINGLE-UNIT	3617	61.0	144	61.8	288	59.4	62	50.0	4111	60.7
	SEMI-COMB	4484	61.9	7972	71.2	1015	65.9	323	62.2	13794	67.6
	FULL-COMB	336	71.4	101	72.3	90	70.0	7	57.1	534	71.2
	TOTAL	8437	61.9	8217	71.0	1393	64.8	392	60.2	18439	66.2
OTHER	SINGLE-UNIT	7203	46.6	636	26.1	483	49.5	437	22.7	8759	44.1
	SEMI-COMB	555	65.0	428	70.6	297	58.6	16	56.3	1296	65.3
	FULL-COMB	190	67.4	35	71.4	39	56.4	5	60.0	269	66.2
	TOTAL	7948	48.4	1099	44.9	819	53.1	458	24.2	10324	47.3
TOTAL	SINGLE-UNIT	19202	57.3	1925	53.0	2401	61.8	672	34.8	24200	56.8
	SEMI-COMB	20833	65.1	43293	75.7	5136	67.3	1815	71.9	71077	71.9
	FULL-COMB	1013	65.6	525	66.3	290	63.4	18	66.7	1846	65.5
	TOTAL	41048	61.5	45743	74.6	7827	65.5	2505	61.9	97123	68.0

SOURCE OF DATA: FEDERAL HIGHWAY ADMINISTRATION
ANNUAL TRUCK WEIGHT STUDY

= TOTAL NUMBER OF TRUCKS COUNTED
% = PERCENT OF TRUCKS CARRYING A LOAD

UNITED STATES

TABLE 6 - PERCENT CARRYING LOADS BY TRUCK AND BODY TYPES AND CLASS OF OPERATION

BODY TYPE GROUP	TRUCK TYPE	MAIN RURAL ROADS ^{1/} 1974 CLASS OF OPERATION									
		PRIVATE		ICC-REG		NON-ICC-REG		OTHER		TOTAL	
		#	%	#	%	#	%	#	%	#	%
LIVESTOCK	SINGLE-UNIT	949	55.0	59	49.2	51	60.8	23	65.2	1082	55.2
	SEMI-COMB	578	54.8	1034	53.9	518	59.7	75	46.7	2205	55.2
	FULL-COMB	76	60.5	20	65.0	17	82.4	1	100.0	114	64.9
	TOTAL	1603	55.2	1113	53.8	586	60.4	99	51.5	3401	55.5
HOPPER	SINGLE-UNIT	1021	54.8	76	50.0	147	51.7	33	51.5	1277	54.1
	SEMI-COMB	1631	55.7	2532	62.4	1126	63.0	80	62.5	5369	60.5
	FULL-COMB	61	57.4	20	85.0	27	63.0	0	0.0	108	63.9
	TOTAL	2713	55.4	2628	62.2	1300	61.7	113	59.3	6754	59.3
DUMP TRUCK	SINGLE-UNIT	3601	46.5	268	44.4	800	41.6	60	51.7	4729	45.6
	SEMI-COMB	1575	57.3	762	54.5	303	57.1	52	50.0	2692	56.4
	FULL-COMB	169	62.1	14	71.4	82	63.4	5	100.0	270	63.7
	TOTAL	5345	50.2	1044	52.1	1185	47.1	117	53.0	7691	50.0
REFRIGERATED VAN	SINGLE-UNIT	2746	74.4	207	73.4	249	77.9	54	57.4	3256	74.3
	SEMI-COMB	4221	70.4	8678	78.3	1264	78.2	354	81.1	14517	76.0
	FULL-COMB	6	83.3	10	90.0	6	100.0	0	0.0	22	90.9
	TOTAL	6973	72.0	8895	78.2	1519	78.2	408	77.9	17795	75.7
NON PETROLEUM TANKER	SINGLE-UNIT	637	58.7	57	64.9	120	63.3	9	33.3	823	59.5
	SEMI-COMB	1801	51.4	2994	53.3	411	54.7	136	44.9	5342	52.6
	FULL-COMB	77	53.2	104	58.7	33	54.5	2	50.0	216	56.0
	TOTAL	2515	53.3	3155	53.7	564	56.6	147	44.2	6381	53.6
PETROLEUM TANKER	SINGLE-UNIT	766	70.2	29	58.6	90	67.8	7	71.4	892	69.6
	SEMI-COMB	1896	57.0	2294	54.2	437	51.9	82	50.0	4709	55.0
	FULL-COMB	274	58.0	296	63.2	94	56.4	3	100.0	667	60.3
	TOTAL	2936	60.5	2619	55.3	621	54.9	92	53.3	6268	57.7
AUTO CARRIER	SINGLE-UNIT	71	50.7	8	75.0	4	50.0	2	50.0	85	52.9
	SEMI-COMB	281	58.7	1649	60.8	45	64.4	55	52.7	2030	60.4
	FULL-COMB	4	100.0	91	76.9	9	77.8	0	0.0	104	77.9
	TOTAL	356	57.6	1748	61.7	58	65.5	57	52.6	2219	60.9
VAN	SINGLE-UNIT	9881	67.3	1472	70.7	1932	73.4	198	62.1	13483	68.5
	SEMI-COMB	14765	67.4	31556	80.2	2949	71.8	1373	78.4	50643	75.9
	FULL-COMB	123	78.9	64	65.6	40	65.0	1	100.0	228	72.8
	TOTAL	24769	67.4	33042	79.7	4921	72.4	1572	76.3	64354	74.4
FLAT BED	SINGLE-UNIT	9175	58.6	298	61.1	731	60.2	133	57.1	10337	58.8
	SEMI-COMB	8188	60.4	11747	68.2	1823	65.3	473	63.8	22231	65.0
	FULL-COMB	562	70.3	145	69.0	163	76.7	11	45.5	881	70.9
	TOTAL	17925	59.8	12190	68.0	2717	64.6	617	62.1	33449	63.2
OTHER	SINGLE-UNIT	31087	38.8	1223	30.7	1544	49.6	907	27.0	34761	38.7
	SEMI-COMB	1820	67.7	656	69.5	752	72.1	29	72.4	3257	69.1
	FULL-COMB	314	69.4	46	76.1	91	51.6	11	63.6	462	66.5
	TOTAL	33221	40.7	1925	45.0	2387	56.8	947	28.8	38480	41.6
TOTAL	SINGLE-UNIT	59934	49.8	3697	54.0	5668	59.9	1426	38.4	70725	50.6
	SEMI-COMB	36756	63.7	63902	73.5	9628	67.6	2709	71.2	112995	69.7
	FULL-COMB	1666	66.3	810	67.2	562	64.9	34	67.6	3072	66.3
	TOTAL	98356	55.3	68409	72.3	15858	64.8	4169	59.9	186792	62.4

SOURCE OF DATA: FEDERAL HIGHWAY ADMINISTRATION
ANNUAL TRUCK WEIGHT STUDY

= TOTAL NUMBER OF TRUCKS COUNTED
% = PERCENT OF TRUCKS CARRYING A LOAD

^{1/} Includes Interstate Rural Roads

UNITED STATES

TABLE 6 - PERCENT CARRYING LOADS BY TRUCK AND BODY TYPES AND CLASS OF OPERATION

LOCAL RURAL ROADS
1974
CLASS OF OPERATION

BODY TYPE GROUP	TRUCK TYPE	PRIVATE		ICC-REG		NON-ICC-REG		OTHER		TOTAL	
		#	%	#	%	#	%	#	%	#	%
LIVESTOCK	SINGLE-UNIT	0	0.0	0	0.0	0	0.0	0	0.0	0	0.0
	SEMI-COMB	0	0.0	0	0.0	0	0.0	0	0.0	0	0.0
	FULL-COMB	0	0.0	0	0.0	0	0.0	0	0.0	0	0.0
	TOTAL	0	0.0	0	0.0	0	0.0	0	0.0	0	0.0
HOPPER	SINGLE-UNIT	2	50.0	0	0.0	0	0.0	0	0.0	2	50.0
	SEMI-COMB	9	44.4	0	0.0	1	0.0	0	0.0	10	40.0
	FULL-COMB	2	100.0	0	0.0	0	0.0	0	0.0	2	100.0
	TOTAL	13	53.8	0	0.0	1	0.0	0	0.0	14	50.0
DUMP TRUCK	SINGLE-UNIT	30	43.3	1	0.0	0	0.0	0	0.0	31	41.9
	SEMI-COMB	13	23.1	2	50.0	0	0.0	0	0.0	15	26.7
	FULL-COMB	4	25.0	0	0.0	0	0.0	0	0.0	4	25.0
	TOTAL	47	36.2	3	33.3	0	0.0	0	0.0	50	36.0
REFRIGERATED VAN	SINGLE-UNIT	12	100.0	0	0.0	0	0.0	0	0.0	12	100.0
	SEMI-COMB	3	66.7	3	33.3	0	0.0	0	0.0	6	50.0
	FULL-COMB	0	0.0	0	0.0	0	0.0	0	0.0	0	0.0
	TOTAL	15	93.3	3	33.3	0	0.0	0	0.0	18	83.3
NON PETROLEUM TANKER	SINGLE-UNIT	7	57.1	0	0.0	1	100.0	0	0.0	8	62.5
	SEMI-COMB	3	33.3	4	50.0	1	100.0	0	0.0	8	50.0
	FULL-COMB	0	0.0	0	0.0	0	0.0	0	0.0	0	0.0
	TOTAL	10	50.0	4	50.0	2	100.0	0	0.0	16	56.3
PETROLEUM TANKER	SINGLE-UNIT	3	66.7	0	0.0	0	0.0	0	0.0	3	66.7
	SEMI-COMB	0	0.0	0	0.0	0	0.0	0	0.0	0	0.0
	FULL-COMB	0	0.0	0	0.0	0	0.0	0	0.0	0	0.0
	TOTAL	3	66.7	0	0.0	0	0.0	0	0.0	3	66.7
AUTO CARRIER	SINGLE-UNIT	0	0.0	0	0.0	0	0.0	0	0.0	0	0.0
	SEMI-COMB	0	0.0	2	0.0	0	0.0	0	0.0	2	0.0
	FULL-COMB	0	0.0	0	0.0	0	0.0	0	0.0	0	0.0
	TOTAL	0	0.0	2	0.0	0	0.0	0	0.0	2	0.0
VAN	SINGLE-UNIT	42	85.7	5	80.0	3	33.3	0	0.0	50	82.0
	SEMI-COMB	22	72.7	21	61.9	0	0.0	0	0.0	43	67.4
	FULL-COMB	0	0.0	0	0.0	0	0.0	0	0.0	0	0.0
	TOTAL	64	81.3	26	65.4	3	33.3	0	0.0	93	75.3
FLAT BED	SINGLE-UNIT	25	52.0	0	0.0	1	0.0	0	0.0	26	50.0
	SEMI-COMB	15	66.7	3	66.7	0	0.0	0	0.0	18	66.7
	FULL-COMB	0	0.0	0	0.0	0	0.0	0	0.0	0	0.0
	TOTAL	40	57.5	3	66.7	1	0.0	0	0.0	44	56.8
OTHER	SINGLE-UNIT	285	44.9	2	100.0	3	66.7	2	100.0	292	45.9
	SEMI-COMB	1	0.0	0	0.0	0	0.0	0	0.0	1	0.0
	FULL-COMB	1	100.0	0	0.0	0	0.0	0	0.0	1	100.0
	TOTAL	287	44.9	2	100.0	3	66.7	2	100.0	294	45.9
TOTAL	SINGLE-UNIT	406	51.5	8	75.0	8	50.0	2	100.0	424	52.1
	SEMI-COMB	66	54.5	35	54.3	2	50.0	0	0.0	103	54.4
	FULL-COMB	7	57.1	0	0.0	0	0.0	0	0.0	7	57.1
	TOTAL	479	52.0	43	58.1	10	50.0	2	100.0	534	52.6

SOURCE OF DATA: FEDERAL HIGHWAY ADMINISTRATION
ANNUAL TRUCK WEIGHT STUDY

- TOTAL NUMBER OF TRUCKS COUNTED
% - PERCENT OF TRUCKS CARRYING A LOAD.

UNITED STATES

TABLE 6 - PERCENT CARRYING LOADS BY TRUCK AND BODY TYPES AND CLASS OF OPERATION

		URBAN ROADS 1974 CLASS OF OPERATION									
BODY TYPE GROUP	TRUCK TYPE	PRIVATE		ICC-REG		NON-ICC-REG		OTHER		TOTAL	
		#	%	#	%	#	%	#	%	#	%
LIVESTOCK	SINGLE-UNIT	153	38.6	13	53.8	18	55.6	4	75.0	188	42.0
	SEMI-COMB	46	52.2	43	65.1	24	50.0	1	100.0	114	57.0
	FULL-COMB	4	100.0	2	50.0	1	100.0	1	100.0	8	87.5
	TOTAL	203	42.9	58	62.1	43	53.5	6	83.3	310	48.7
HOPPER	SINGLE-UNIT	140	56.4	7	57.1	16	31.3	22	36.4	185	51.9
	SEMI-COMB	186	53.8	315	51.7	74	66.2	14	28.6	589	53.7
	FULL-COMB	1	100.0	0	0.0	1	0.0	1	0.0	3	33.3
	TOTAL	327	55.0	322	51.9	91	59.3	37	32.4	777	53.2
DUMP TRUCK	SINGLE-UNIT	1349	43.6	84	54.8	116	44.0	75	46.7	1624	44.3
	SEMI-COMB	359	60.4	159	49.7	25	48.0	18	44.4	561	56.3
	FULL-COMB	11	63.6	2	100.0	2	100.0	0	0.0	15	73.3
	TOTAL	1719	47.2	245	51.8	143	45.5	93	46.2	2200	47.6
REFRIGERATED VAN	SINGLE-UNIT	940	77.6	85	80.0	74	66.2	23	82.6	1122	77.1
	SEMI-COMB	501	63.7	791	69.5	63	71.4	23	73.9	1378	67.6
	FULL-COMB	10	50.0	10	40.0	1	0.0	0	0.0	21	42.9
	TOTAL	1451	72.6	886	70.2	138	68.1	46	78.3	2521	71.6
NON PETROLEUM TANKER	SINGLE-UNIT	179	67.6	14	57.1	11	63.6	6	16.7	210	65.2
	SEMI-COMB	323	46.4	478	48.7	40	45.0	12	50.0	853	47.7
	FULL-COMB	7	57.1	6	50.0	2	50.0	0	0.0	15	53.3
	TOTAL	509	54.0	498	49.0	53	49.1	18	38.9	1078	51.2
PETROLEUM TANKER	SINGLE-UNIT	296	80.1	17	70.6	11	63.6	5	100.0	329	79.3
	SEMI-COMB	459	55.3	434	58.8	43	60.5	28	35.7	964	56.5
	FULL-COMB	51	70.6	23	47.8	11	72.7	0	0.0	85	64.7
	TOTAL	806	65.4	474	58.6	65	63.1	33	45.5	1378	62.5
AUTO CARRIER	SINGLE-UNIT	11	63.6	2	50.0	2	0.0	0	0.0	15	53.3
	SEMI-COMB	29	51.7	219	73.5	7	57.1	6	83.3	261	70.9
	FULL-COMB	1	0.0	1	100.0	0	0.0	0	0.0	2	50.0
	TOTAL	41	53.7	222	73.4	9	44.4	6	83.3	278	69.8
VAN	SINGLE-UNIT	3758	67.1	902	71.4	589	70.1	97	49.5	5346	67.8
	SEMI-COMB	2078	64.7	4781	75.6	387	64.6	167	61.7	7413	71.7
	FULL-COMB	13	49.2	23	43.5	4	75.0	0	0.0	40	55.0
	TOTAL	5849	66.3	5706	74.8	980	68.0	264	57.2	12799	70.0
FLAT BED	SINGLE-UNIT	2968	57.3	121	63.6	193	61.1	67	58.2	3349	57.7
	SEMI-COMB	1235	58.8	1391	61.2	176	63.6	40	65.0	2842	60.3
	FULL-COMB	42	66.7	10	90.0	8	75.0	1	100.0	61	72.1
	TOTAL	4245	57.8	1522	61.6	377	62.6	108	61.1	6252	59.1
OTHER	SINGLE-UNIT	13352	39.6	530	35.7	574	49.7	652	25.6	15108	39.2
	SEMI-COMB	193	70.5	73	63.0	35	82.9	5	80.0	306	70.3
	FULL-COMB	22	63.6	2	50.0	4	50.0	3	66.7	31	61.3
	TOTAL	13567	40.1	605	39.0	613	51.5	660	26.2	15445	39.9
TOTAL	SINGLE-UNIT	23146	49.0	1775	59.5	1604	58.9	951	34.2	27476	49.7
	SEMI-COMB	5409	60.7	8684	68.9	874	63.7	314	58.6	15281	65.5
	FULL-COMB	162	66.7	79	53.2	34	67.6	6	66.7	281	63.0
	TOTAL	28717	51.3	10538	67.2	2512	60.7	1271	40.4	43038	55.4

SOURCE OF DATA: FEDERAL HIGHWAY ADMINISTRATION
ANNUAL TRUCK WEIGHT STUDY

= TOTAL NUMBER OF TRUCKS COUNTED
% = PERCENT OF TRUCKS CARRYING A LOAD

UNITED STATES

TABLE 6 - PERCENT CARRYING LOADS BY TRUCK AND BODY TYPES AND CLASS OF OPERATION

BODY TYPE GROUP	TRUCK TYPE	TOTAL ROADS 1974 CLASS OF OPERATION									
		PRIVATE		ICC-REG		NON-ICC-REG		OTHER		TOTAL	
		#	%	#	%	#	%	#	%	#	%
LIVESTOCK	SINGLE-UNIT	1102	52.7	72	50.0	69	59.4	27	66.7	1270	53.2
	SEMI-COMB	624	54.6	1077	54.3	542	59.2	76	47.4	2319	55.3
	FULL-COMB	80	62.5	22	63.6	18	83.3	2	100.0	122	66.4
	TOTAL	1806	53.8	1171	54.2	629	59.9	105	53.3	3711	55.0
HOPPER	SINGLE-UNIT	1163	55.0	83	50.6	163	49.7	55	45.5	1464	53.8
	SEMI-COMB	1826	55.4	2847	61.2	1201	63.1	94	57.4	5968	59.8
	FULL-COMB	64	59.4	20	85.0	28	60.7	1	0.0	113	63.7
	TOTAL	3053	55.4	2950	61.1	1392	61.5	150	52.7	7545	58.7
DUMP TRUCK	SINGLE-UNIT	4980	45.7	353	46.7	916	41.9	135	48.9	6384	45.3
	SEMI-COMB	1947	57.7	923	53.6	328	56.4	70	48.6	3268	56.2
	FULL-COMB	184	61.4	16	75.0	84	64.3	5	100.0	289	63.7
	TOTAL	7111	49.4	1292	52.0	1328	46.9	210	50.0	9941	49.4
REFRIGERATED VAN	SINGLE-UNIT	3698	75.3	292	75.3	323	75.2	77	64.9	4390	75.1
	SEMI-COMB	4725	69.7	9472	77.5	1327	77.8	377	80.6	15901	75.3
	FULL-COMB	16	62.5	20	65.0	7	85.7	0	0.0	43	67.4
	TOTAL	8439	72.1	9784	77.4	1657	77.4	454	78.0	20334	75.2
NON PETROLEUM TANKER	SINGLE-UNIT	823	60.6	71	63.4	132	63.6	15	26.7	1041	60.7
	SEMI-COMB	2127	50.6	3476	52.7	452	54.0	148	45.3	6203	51.9
	FULL-COMB	84	53.6	110	58.2	35	54.3	2	50.0	231	55.8
	TOTAL	3034	53.4	3657	53.1	619	56.1	165	43.6	7475	53.3
PETROLEUM TANKER	SINGLE-UNIT	1065	73.0	46	63.0	101	67.3	12	83.3	1224	72.2
	SEMI-COMB	2355	56.6	2728	54.9	480	52.7	110	46.4	5673	55.3
	FULL-COMB	325	60.0	319	62.1	105	58.1	3	100.0	752	60.8
	TOTAL	3745	61.6	3093	55.8	686	55.7	125	51.2	7649	58.5
AUTO CARRIER	SINGLE-UNIT	82	52.4	10	70.0	6	33.3	2	50.0	100	53.0
	SEMI-COMB	310	58.1	1870	62.2	52	63.5	61	55.7	2293	61.5
	FULL-COMB	5	80.0	92	77.2	9	77.8	0	0.0	106	77.4
	TOTAL	397	57.2	1972	63.0	67	62.7	63	55.6	2499	61.9
VAN	SINGLE-UNIT	13681	67.3	2379	71.0	2524	72.6	295	58.0	18879	68.3
	SEMI-COMB	16865	67.1	36358	79.6	3336	71.0	1540	76.6	58099	75.4
	FULL-COMB	136	77.9	87	59.8	44	65.9	1	100.0	268	70.1
	TOTAL	30682	67.2	38824	79.0	5904	71.6	1836	73.6	77246	73.6
FLAT BED	SINGLE-UNIT	12168	58.3	419	61.8	925	60.3	200	57.5	13712	58.5
	SEMI-COMB	9438	60.2	13141	67.4	1999	65.1	513	63.9	25091	64.5
	FULL-COMB	604	70.0	155	70.3	171	76.6	12	50.0	942	71.0
	TOTAL	22210	59.4	13715	67.3	3095	64.3	725	61.9	39745	62.6
OTHER	SINGLE-UNIT	44724	39.1	1755	32.3	2121	49.6	1561	26.5	50161	38.9
	SEMI-COMB	2014	68.0	729	68.9	787	72.6	34	73.5	3564	69.2
	FULL-COMB	337	69.1	48	75.0	95	51.6	14	64.3	494	66.2
	TOTAL	47075	40.6	2532	43.6	3003	55.7	1609	27.8	54219	41.2
TOTAL	SINGLE-UNIT	83486	49.6	5480	55.8	7280	59.7	2379	36.7	98625	50.4
	SEMI-COMB	42231	63.3	72621	72.9	10504	67.3	3023	69.9	128379	69.2
	FULL-COMB	1835	66.3	889	65.9	596	65.1	40	67.5	3360	66.0
	TOTAL	127552	54.4	78990	71.6	18380	64.2	5442	55.4	230364	61.1

SOURCE OF DATA: FEDERAL HIGHWAY ADMINISTRATION
ANNUAL TRUCK WEIGHT STUDY

= TOTAL NUMBER OF TRUCKS COUNTED
% = PERCENT OF TRUCKS CARRYING A LOAD

UNITED STATES

TABLE 7 - AVERAGE CARRIED LOAD BY TRUCK AND BODY TYPES AND CLASS OF OPERATION

		INTERSTATE RURAL ROADS SYSTEM 1974 CLASS OF OPERATION									
BODY TYPE GROUP	TRUCK TYPE	PRIVATE		ICC-REG		NON-ICC-REG		OTHER		TOTAL	
		#	ACL	#	ACL	#	ACL	#	ACL	#	ACL
LIVESTOCK	SINGLE-UNIT	446	3.88	36	2.86	22	2.95	10	2.89	514	3.77
	SEMI-COMB	355	15.66	744	17.27	268	18.30	45	16.33	1412	17.02
	FULL-COMB	57	18.50	15	23.82	14	24.09	1	0.00	87	19.71
	TOTAL	858	9.67	795	16.71	304	16.80	56	13.06	2013	13.31
HOPPER	SINGLE-UNIT	418	7.06	49	8.81	58	6.16	8	6.05	533	7.08
	SEMI-COMB	819	21.40	1616	21.15	524	21.57	56	20.60	3015	21.30
	FULL-COMB	33	17.66	10	0.00	16	18.86	0	0.00	59	19.16
	TOTAL	1270	16.69	1675	20.97	598	20.54	64	19.11	3607	19.67
DUMP TRUCK	SINGLE-UNIT	1012	8.98	88	12.89	296	10.15	19	3.55	1415	9.13
	SEMI-COMB	458	22.51	260	21.93	51	21.43	26	21.93	795	22.29
	FULL-COMB	78	20.26	9	24.80	19	21.14	0	0.00	106	20.81
	TOTAL	1548	13.49	357	21.20	366	12.73	45	12.60	2316	14.79
REFRIGERATED VAN	SINGLE-UNIT	1301	2.13	127	4.16	112	1.80	26	2.24	1566	2.26
	SEMI-COMB	2676	13.31	6415	15.80	781	15.64	279	15.52	10151	15.15
	FULL-COMB	5	31.34	6	23.55	2	0.00	0	0.00	13	25.96
	TOTAL	3982	9.67	6548	15.66	895	13.83	305	16.13	11730	13.86
NON PETROLEUM TANKER	SINGLE-UNIT	226	5.91	30	5.33	36	4.63	3	2.38	295	5.61
	SEMI-COMB	1014	18.78	1899	19.38	166	16.00	90	19.14	3169	19.01
	FULL-COMB	51	25.82	48	22.47	23	23.55	2	21.50	124	23.87
	TOTAL	1291	16.43	1977	19.17	225	13.77	95	18.26	3588	17.85
PETROLEUM TANKER	SINGLE-UNIT	156	3.30	5	4.39	24	2.83	0	0.00	185	3.29
	SEMI-COMB	976	20.41	1226	21.72	186	21.12	28	21.91	2416	21.13
	FULL-COMB	180	24.34	188	24.17	51	25.14	2	0.00	421	24.37
	TOTAL	1312	18.53	1419	22.03	261	20.24	30	22.26	3022	20.32
AUTO CARRIER	SINGLE-UNIT	37	2.47	6	6.89	0	0.00	2	3.25	45	1.37
	SEMI-COMB	167	9.51	1152	11.06	28	7.93	39	9.53	1386	10.84
	FULL-COMB	2	0.00	64	12.63	2	9.45	0	0.00	68	12.42
	TOTAL	206	7.84	1222	11.05	30	8.19	41	8.88	1499	10.64
VAN	SINGLE-UNIT	4786	2.31	804	2.34	1082	1.86	105	1.94	6777	2.24
	SEMI-COMB	9329	11.09	21581	12.60	1820	11.47	913	12.76	33643	12.22
	FULL-COMB	81	4.89	49	10.09	34	8.02	1	0.00	165	6.48
	TOTAL	14196	8.22	22434	12.48	2936	7.71	1019	12.47	40585	11.24
FLAT BED	SINGLE-UNIT	3617	3.41	144	3.09	288	3.25	62	3.89	4111	3.41
	SEMI-COMB	4484	14.36	7972	16.18	1015	15.62	323	15.71	13794	15.63
	FULL-COMB	336	14.22	101	20.43	90	15.48	7	0.19	534	15.48
	TOTAL	8437	9.83	8217	16.09	1393	13.63	392	14.50	18439	13.57
OTHER	SINGLE-UNIT	7203	1.24	636	1.78	483	1.17	437	0.48	8759	1.10
	SEMI-COMB	555	14.91	428	13.71	297	22.10	16	8.81	1296	15.99
	FULL-COMB	190	5.86	35	10.60	39	5.38	5	2.00	269	6.04
	TOTAL	7948	3.20	1099	12.49	819	10.43	458	1.95	10324	4.80
TOTAL	SINGLE-UNIT	19202	3.09	1925	2.98	2401	2.21	672	2.75	24200	3.01
	SEMI-COMB	20833	13.56	43293	14.55	5136	15.30	1815	14.55	71077	14.38
	FULL-COMB	1013	14.14	525	19.31	290	16.33	18	5.20	1846	15.87
	TOTAL	41048	9.76	45743	14.63	7827	11.94	2505	15.89	97123	13.24

SOURCE OF DATA: FEDERAL HIGHWAY ADMINISTRATION
ANNUAL TRUCK WEIGHT STUDY

= TOTAL NUMBER OF TRUCKS COUNTED
ACL = AVERAGE CARRIED LOAD IN TONS

UNITED STATES

TABLE 7- AVERAGE CARRIED LOAD BY TRUCK AND BODY TYPES AND CLASS OF OPERATION

MAIN RURAL ROADS SYSTEM^{1/}
1974
CLASS OF OPERATION

BODY TYPE GROUP	TRUCK TYPE	PRIVATE		ICC-REG		NON-ICC-REG		OTHER		TOTAL	
		#	ACL	#	ACL	#	ACL	#	ACL	#	ACL
LIVESTOCK	SINGLE-UNIT	949	3.67	59	2.72	51	3.73	23	5.20	1082	3.66
	SEMI-COMB	578	16.05	1034	17.36	518	17.92	75	14.77	2205	17.07
	FULL-COMB	76	19.11	20	22.11	17	24.60	1	0.00	114	20.29
	TOTAL	1603	8.92	1113	16.83	586	16.82	99	10.29	3401	12.97
HOPPER	SINGLE-UNIT	1021	6.97	76	8.36	147	7.65	33	4.65	1277	7.05
	SEMI-COMB	1631	20.91	2532	21.34	1126	21.98	80	21.20	5369	21.35
	FULL-COMB	61	19.55	20	24.74	27	21.54	0	0.00	108	21.23
	TOTAL	2713	15.74	2628	21.16	1300	20.89	113	17.75	6754	19.16
DUMP TRUCK	SINGLE-UNIT	3601	10.07	268	13.71	800	11.17	60	6.55	4729	10.37
	SEMI-COMB	1575	20.79	762	21.35	303	23.50	52	21.26	2692	21.25
	FULL-COMB	169	19.41	14	28.40	82	21.88	5	0.00	270	20.64
	TOTAL	5345	14.71	1044	20.26	1185	16.90	117	13.98	7691	15.84
REFRIGERATED VAN	SINGLE-UNIT	2746	1.85	207	3.16	249	1.92	54	0.95	3256	1.92
	SEMI-COMB	4221	12.99	8678	15.32	1264	15.48	354	15.23	14517	14.70
	FULL-COMB	6	32.53	10	22.73	6	0.00	0	0.00	22	26.12
	TOTAL	6973	8.02	8895	15.12	1519	13.30	408	15.10	17795	12.55
NON PETROLEUM TANKER	SINGLE-UNIT	637	4.28	57	7.15	120	6.07	9	1.35	823	4.77
	SEMI-COMB	1801	17.99	2994	19.49	411	19.37	136	20.07	5342	19.01
	FULL-COMB	77	23.54	104	20.73	33	25.44	2	21.50	216	22.34
	TOTAL	2515	13.99	3155	19.20	564	16.16	147	19.42	6381	16.89
PETROLEUM TANKER	SINGLE-UNIT	766	3.15	29	4.31	90	2.32	7	3.17	892	3.07
	SEMI-COMB	1896	20.10	2294	21.19	437	21.01	82	22.02	4709	20.73
	FULL-COMB	274	24.53	296	23.74	94	25.82	3	0.00	667	24.36
	TOTAL	2936	14.68	2619	21.31	621	17.90	92	19.90	6268	17.64
AUTO CARRIER	SINGLE-UNIT	71	2.80	8	4.69	4	4.43	2	3.25	85	2.22
	SEMI-COMB	281	9.19	1649	10.72	45	9.43	55	10.26	2030	10.49
	FULL-COMB	4	0.00	91	11.95	9	12.19	0	0.00	104	11.41
	TOTAL	356	8.41	1748	10.74	58	9.72	57	9.84	2219	10.42
VAN	SINGLE-UNIT	9881	2.18	1472	2.20	1932	2.03	198	1.94	13483	2.17
	SEMI-COMB	14765	10.99	31556	12.22	2949	12.07	1373	12.09	50643	11.95
	FULL-COMB	123	6.76	64	12.48	40	9.01	1	0.00	228	8.27
	TOTAL	24769	7.47	33092	12.02	4921	7.87	1572	11.90	64354	10.61
FLAT BED	SINGLE-UNIT	9175	3.54	298	3.69	731	3.53	133	3.22	10337	3.54
	SEMI-COMB	8188	14.10	11747	16.06	1823	15.28	473	15.34	22231	15.35
	FULL-COMB	562	14.81	145	20.62	163	16.23	11	0.58	881	15.96
	TOTAL	17925	9.01	12190	15.90	2717	12.79	617	13.14	33449	12.48
OTHER	SINGLE-UNIT	31087	1.72	1223	1.24	1544	1.50	907	1.18	34761	1.66
	SEMI-COMB	1820	19.02	656	14.15	752	23.11	29	12.12	3257	18.96
	FULL-COMB	314	6.49	46	11.80	91	10.48	11	1.85	462	7.06
	TOTAL	33221	4.02	1925	10.98	2387	12.05	947	2.94	38480	5.21
TOTAL	SINGLE-UNIT	59934	3.49	3697	3.04	5668	3.13	1426	3.00	70725	3.51
	SEMI-COMB	36756	13.92	63902	14.35	9628	16.41	2709	14.09	112995	14.43
	FULL-COMB	1666	14.61	810	19.76	562	18.09	34	9.34	3072	16.55
	TOTAL	98356	9.57	68409	14.34	15858	12.72	4169	14.79	186792	13.07

SOURCE OF DATA: FEDERAL HIGHWAY ADMINISTRATION
ANNUAL TRUCK WEIGHT STUDY

= TOTAL NUMBER OF TRUCKS COUNTED
ACL = AVERAGE CARRIED LOAD IN TONS

^{1/} Includes Interstate Rural

UNITED STATES

TABLE 7 - AVERAGE CARRIED LOAD BY TRUCK AND BODY TYPES AND CLASS OF OPERATION

BODY TYPE GROUP	TRUCK TYPE	LOCAL RURAL ROADS 1974 CLASS OF OPERATION									
		PRIVATE		ICC-REG		NON-ICC-REG		OTHER		TOTAL	
		#	ACL	#	ACL	#	ACL	#	ACL	#	ACL
LIVESTOCK	SINGLE-UNIT	0	0.00	0	0.00	0	0.00	0	0.00	0	0.00
	SEMI-COMB	0	0.00	0	0.00	0	0.00	0	0.00	0	0.00
	FULL-COMB	0	0.00	0	0.00	0	0.00	0	0.00	0	0.00
	TOTAL	0	0.00	0	0.00	0	0.00	0	0.00	0	0.00
HOPPER	SINGLE-UNIT	2	2.35	0	0.00	0	0.00	0	0.00	2	2.35
	SEMI-COMB	9	20.41	0	0.00	1	0.00	0	0.00	10	20.53
	FULL-COMB	2	0.00	0	0.00	0	0.00	0	0.00	2	0.00
	TOTAL	13	12.69	0	0.00	1	0.00	0	0.00	14	12.64
DUMP TRUCK	SINGLE-UNIT	30	14.03	1	0.00	0	0.00	0	0.00	31	14.30
	SEMI-COMB	13	15.88	2	23.05	0	0.00	0	0.00	15	17.66
	FULL-COMB	4	2.70	0	0.00	0	0.00	0	0.00	4	2.70
	TOTAL	47	12.44	3	29.05	0	0.00	0	0.00	50	13.37
REFRIGERATED VAN	SINGLE-UNIT	12	0.00	0	0.00	0	0.00	0	0.00	12	0.00
	SEMI-COMB	3	14.20	3	4.90	0	0.00	0	0.00	6	10.52
	FULL-COMB	0	0.00	0	0.00	0	0.00	0	0.00	0	0.00
	TOTAL	15	4.44	3	4.90	0	0.00	0	0.00	18	4.87
NON PETROLEUM TANKER	SINGLE-UNIT	7	7.06	0	0.00	1	0.00	0	0.00	8	6.21
	SEMI-COMB	3	15.85	4	23.50	1	0.00	0	0.00	8	21.68
	FULL-COMB	0	0.00	0	0.00	0	0.00	0	0.00	0	0.00
	TOTAL	10	7.18	4	23.50	2	0.00	0	0.00	16	12.06
PETROLEUM TANKER	SINGLE-UNIT	3	2.05	0	0.00	0	0.00	0	0.00	3	2.05
	SEMI-COMB	0	0.00	0	0.00	0	0.00	0	0.00	0	0.00
	FULL-COMB	0	0.00	0	0.00	0	0.00	0	0.00	0	0.00
	TOTAL	3	2.05	0	0.00	0	0.00	0	0.00	3	2.05
AUTO CARRIER	SINGLE-UNIT	0	0.00	0	0.00	0	0.00	0	0.00	0	0.00
	SEMI-COMB	0	0.00	2	0.00	0	0.00	0	0.00	2	0.00
	FULL-COMB	0	0.00	0	0.00	0	0.00	0	0.00	0	0.00
	TOTAL	0	0.00	2	0.00	0	0.00	0	0.00	2	0.00
VAN	SINGLE-UNIT	42	0.26	5	1.51	3	3.93	0	0.00	50	0.48
	SEMI-COMB	22	10.29	21	1.27	0	0.00	0	0.00	43	6.20
	FULL-COMB	0	0.00	0	0.00	0	0.00	0	0.00	0	0.00
	TOTAL	64	1.86	26	0.12	3	3.93	0	0.00	93	1.28
FLAT BED	SINGLE-UNIT	25	1.53	0	0.00	1	0.00	0	0.00	26	1.50
	SEMI-COMB	15	13.32	3	5.65	0	0.00	0	0.00	18	10.16
	FULL-COMB	0	0.00	0	0.00	0	0.00	0	0.00	0	0.00
	TOTAL	40	8.10	3	5.65	1	0.00	0	0.00	44	7.45
OTHER	SINGLE-UNIT	285	2.26	2	0.00	3	10.55	2	0.00	292	2.44
	SEMI-COMB	1	0.00	0	0.00	0	0.00	0	0.00	1	0.00
	FULL-COMB	1	0.00	0	0.00	0	0.00	0	0.00	1	0.00
	TOTAL	287	2.16	2	0.00	3	10.55	2	0.00	294	2.34
TOTAL	SINGLE-UNIT	406	3.35	8	0.89	8	8.71	2	0.00	424	3.38
	SEMI-COMB	66	12.60	35	4.02	2	23.60	0	0.00	103	9.88
	FULL-COMB	7	2.23	0	0.00	0	0.00	0	0.00	7	2.23
	TOTAL	479	4.87	43	1.66	10	11.69	2	0.00	534	4.84

SOURCE OF DATA: FEDERAL HIGHWAY ADMINISTRATION
ANNUAL TRUCK WEIGHT STUDY

- TOTAL NUMBER OF TRUCKS COUNTED
ACL = AVERAGE CARRIED LOAD IN TONS

UNITED STATES

TABLE 7 - AVERAGE CARRIED LOAD BY TRUCK AND BODY TYPES AND CLASS OF OPERATION

		URBAN ROADS 1974 CLASS OF OPERATION									
BODY TYPE GROUP	TRUCK TYPE	PRIVATE		ICC-REG		NON-ICC-REG		OTHER		TOTAL	
		#	ACL	#	ACL	#	ACL	#	ACL	#	ACL
LIVESTOCK	SINGLE-UNIT	153	2.23	13	2.84	18	3.41	4	5.70	188	2.68
	SEMI-COMB	46	17.00	43	14.14	24	14.03	1	0.00	114	15.15
	FULL-COMB	4	0.00	2	19.75	1	0.00	1	0.00	8	12.14
	TOTAL	203	8.15	58	13.14	43	8.51	6	10.46	310	10.34
HOPPER	SINGLE-UNIT	140	5.66	7	10.14	16	9.15	22	9.30	185	6.39
	SEMI-COMB	186	18.02	315	19.71	74	19.24	14	21.04	589	19.19
	FULL-COMB	1	0.00	0	0.00	1	0.00	1	0.00	3	29.73
	TOTAL	327	12.43	322	19.44	91	20.04	37	12.74	777	16.35
DUMP TRUCK	SINGLE-UNIT	1349	8.45	84	11.34	116	10.20	75	6.90	1624	8.72
	SEMI-COMB	359	21.17	159	19.77	25	20.40	18	21.97	561	20.67
	FULL-COMB	11	13.52	2	0.00	2	0.00	0	0.00	15	14.78
	TOTAL	1719	12.77	245	16.13	143	12.45	93	9.60	2200	13.13
REFRIGERATED VAN	SINGLE-UNIT	940	1.18	85	2.78	74	1.46	23	3.58	1122	1.40
	SEMI-COMB	501	11.74	791	12.96	63	10.58	23	2.90	1378	12.29
	FULL-COMB	10	3.37	10	12.64	1	0.00	0	0.00	21	7.83
	TOTAL	1451	2.81	886	11.41	138	6.30	46	2.00	2521	5.82
NON PETROLEUM TANKER	SINGLE-UNIT	179	3.38	14	5.76	11	0.18	6	0.28	210	3.34
	SEMI-COMB	323	17.33	478	18.78	40	18.36	12	20.74	853	18.27
	FULL-COMB	7	14.63	6	24.22	2	25.25	0	0.00	15	20.17
	TOTAL	509	9.74	498	18.35	53	13.00	18	19.97	1078	13.77
PETROLEUM TANKER	SINGLE-UNIT	296	3.18	17	2.70	11	2.38	5	0.00	329	3.18
	SEMI-COMB	459	20.32	434	20.97	43	20.07	28	20.62	964	20.65
	FULL-COMB	51	24.85	23	20.50	11	23.95	0	0.00	85	23.97
	TOTAL	806	11.29	474	20.11	65	17.70	33	13.26	1378	14.41
AUTO CARRIER	SINGLE-UNIT	11	0.10	2	1.60	2	0.00	0	0.00	15	0.09
	SEMI-COMB	29	13.71	219	10.05	7	9.10	6	6.78	261	10.64
	FULL-COMB	1	0.00	1	0.00	0	0.00	0	0.00	2	12.70
	TOTAL	41	8.65	222	10.07	9	12.86	6	6.78	278	10.69
VAN	SINGLE-UNIT	3758	1.65	902	1.81	589	1.62	97	3.18	5346	1.74
	SEMI-COMB	2078	9.09	4781	9.52	387	7.82	167	9.04	7413	9.37
	FULL-COMB	13	17.29	23	11.57	4	4.98	0	0.00	40	11.81
	TOTAL	5849	4.05	5706	8.59	980	3.41	264	8.25	12799	6.67
FLAT BED	SINGLE-UNIT	2968	2.78	121	1.98	193	1.52	67	4.51	3349	2.73
	SEMI-COMB	1235	13.28	1391	13.49	176	13.86	40	14.08	2842	13.45
	FULL-COMB	42	9.09	10	3.86	8	11.71	1	0.00	61	9.85
	TOTAL	4245	6.09	1522	12.43	377	7.90	108	8.95	6252	8.07
OTHER	SINGLE-UNIT	13352	1.91	530	2.11	574	1.12	652	1.92	15108	1.88
	SEMI-COMB	193	14.87	73	15.81	35	17.58	5	0.05	306	15.21
	FULL-COMB	22	10.12	2	9.15	4	0.30	3	6.53	31	7.48
	TOTAL	13567	2.47	605	5.66	613	3.40	660	2.25	15445	2.65
TOTAL	SINGLE-UNIT	23146	3.03	1775	2.39	1604	2.06	951	3.89	27476	3.05
	SEMI-COMB	5409	12.87	8684	11.56	874	12.17	314	11.10	15281	12.08
	FULL-COMB	162	15.10	79	14.34	34	13.85	6	10.03	281	14.44
	TOTAL	28717	6.14	10538	10.71	2512	6.39	1271	8.47	43038	8.56

SOURCE OF DATA: FEDERAL HIGHWAY ADMINISTRATION
ANNUAL TRUCK WEIGHT STUDY

= TOTAL NUMBER OF TRUCKS COUNTED
ACL = AVERAGE CARRIED LOAD IN TONS

UNITED STATES

TABLE 7 - AVERAGE CARRIED LOAD BY TRUCK AND BODY TYPES AND CLASS OF OPERATION

		TOTAL ROAD SYSTEMS 1974 CLASS OF OPERATION									
BODY TYPE GROUP	TRUCK TYPE	PRIVATE		ICC-REG		NON-ICC-REG		OTHER		TOTAL	
		#	ACL	#	ACL	#	ACL	#	ACL	#	ACL
LIVESTOCK	SINGLE-UNIT	1102	3.53	72	2.70	69	3.67	27	5.32	1270	3.55
	SEMI-COMB	624	16.11	1077	17.24	542	17.73	76	14.52	2319	16.98
	FULL-COMB	80	18.69	22	21.95	18	23.56	2	0.00	122	19.70
	TOTAL	1806	8.95	1171	16.61	629	16.34	105	9.79	3711	12.84
HOPPER	SINGLE-UNIT	1163	6.79	83	8.50	163	7.77	55	6.02	1464	6.96
	SEMI-COMB	1826	20.60	2847	21.12	1201	21.82	94	21.33	5968	21.12
	FULL-COMB	64	18.90	20	24.74	28	21.59	1	0.00	113	21.07
	TOTAL	3053	15.37	2950	20.93	1392	20.83	150	17.35	7545	18.86
DUMP TRUCK	SINGLE-UNIT	4980	9.66	353	13.17	916	11.04	135	6.79	6384	9.97
	SEMI-COMB	1947	20.86	923	20.96	328	23.35	70	21.41	3268	21.13
	FULL-COMB	184	18.99	16	27.85	84	21.57	5	0.00	289	20.29
	TOTAL	7111	14.25	1292	19.50	1328	16.44	210	12.35	9941	15.26
REFRIGERATED VAN	SINGLE-UNIT	3698	1.69	292	3.10	323	1.89	77	1.47	4390	1.79
	SEMI-COMB	4725	12.86	9472	15.10	1327	15.24	377	14.55	15901	14.48
	FULL-COMB	16	12.85	20	16.08	7	13.52	0	0.00	43	14.59
	TOTAL	8439	7.09	9784	14.78	1657	12.92	454	13.77	20334	11.76
NON PETROLEUM TANKER	SINGLE-UNIT	823	4.11	71	6.83	132	5.48	15	0.78	1041	4.49
	SEMI-COMB	2127	17.86	3476	19.35	452	19.33	148	20.15	6203	18.88
	FULL-COMB	84	22.83	110	20.90	35	25.43	2	21.50	231	22.19
	TOTAL	3034	13.25	3657	19.05	619	15.89	165	19.50	7475	16.43
PETROLEUM TANKER	SINGLE-UNIT	1065	3.19	46	3.66	101	2.36	12	4.33	1224	3.12
	SEMI-COMB	2355	20.13	2728	21.16	480	20.95	110	21.72	5673	20.72
	FULL-COMB	325	24.55	319	23.62	105	25.64	3	0.00	752	24.30
	TOTAL	3745	13.90	3093	21.12	686	17.89	125	18.31	7649	17.01
AUTO CARRIER	SINGLE-UNIT	82	2.33	10	3.21	6	4.96	2	3.25	100	1.90
	SEMI-COMB	310	9.57	1870	10.66	52	9.43	61	10.43	2293	10.53
	FULL-COMB	5	6.94	92	11.87	9	12.19	0	0.00	106	11.60
	TOTAL	397	8.44	1972	10.67	67	10.39	63	10.09	2499	10.45
VAN	SINGLE-UNIT	13681	2.03	2379	2.04	2524	1.94	295	2.42	18879	2.05
	SEMI-COMB	16865	10.76	36358	11.87	3336	11.63	1540	11.88	58099	11.63
	FULL-COMB	136	7.53	87	11.94	44	7.85	1	0.00	268	8.36
	TOTAL	30682	6.83	38824	11.57	5904	7.23	1836	11.84	77246	10.03
FLAT BED	SINGLE-UNIT	12168	3.35	419	3.19	925	3.10	200	3.64	13712	3.35
	SEMI-COMB	9438	13.99	13141	15.77	1999	15.16	513	15.24	25091	15.13
	FULL-COMB	604	14.43	155	19.79	171	16.02	12	0.26	942	15.56
	TOTAL	22210	8.49	13715	15.52	3095	12.24	725	12.54	39745	11.86
OTHER	SINGLE-UNIT	44724	1.78	1755	1.51	2121	1.42	1561	1.49	50161	1.73
	SEMI-COMB	2014	18.61	729	14.30	787	22.88	34	10.31	3564	18.64
	FULL-COMB	337	6.55	48	10.17	95	10.08	14	2.72	494	6.98
	TOTAL	47075	3.57	2532	9.84	3003	10.50	1609	2.69	54219	4.49
TOTAL	SINGLE-UNIT	83486	3.37	5480	2.80	7280	2.91	2379	3.35	98625	3.38
	SEMI-COMB	42231	13.78	72621	14.01	10504	16.07	3023	13.86	128379	14.15
	FULL-COMB	1835	14.61	889	19.26	596	17.85	40	9.47	3360	16.33
	TOTAL	127552	8.87	78990	13.89	18380	11.95	5442	14.21	230364	12.39

SOURCE OF DATA: FEDERAL HIGHWAY ADMINISTRATION
ANNUAL TRUCK WEIGHT STUDY

= TOTAL NUMBER OF TRUCKS COUNTED
ACL = AVERAGE CARRIED LOAD IN TONS

UNITED STATES

Table 8 - OPERATION OF TRUCKS AND COMBINATIONS ON MAIN RURAL ROADS-1974

UNITED STATES

FREQUENCY OF HEAVY AXLE WEIGHTS		
WEIGHT GROUP	NUMBER WEIGHED	FREQUENCY PER 1000 VEHICLES
18K OR MORE	22,686	119
19K OR MORE	13,402	70
20K OR MORE	8,481	44
21K OR MORE	5,555	29
22K OR MORE	3,618	19
23K OR MORE	2,430	13

TOTAL AXLES WEIGHED = 718,191

FREQUENCY OF HEAVY GROSS WEIGHTS		
WEIGHT GROUP	NUMBER WEIGHED	FREQUENCY PER 1000 VEHICLES
30K OR MORE	94,255	494
40K OR MORE	71,547	375
50K OR MORE	57,235	300
60K OR MORE	43,952	230
70K OR MORE	23,642	124
80K OR MORE	3,475	18

TOTAL VEHICLES WEIGHED = 190,881

OPERATING CHARACTERISTICS BY VEHICLE TYPE

	VEHICLES WEIGHED	PERCENT LOADED	VEHICLE/MILES ALL TRUCKS (IN MILLIONS)	AVG. CARRIED LOAD (IN TONS)(1)	CARRIED LOAD (IN MILLIONS OF TON-MILES)(1)
SINGLE UNIT TRUCKS					
2 AXLE - 4 TIRE	31,921	34.1	66,746	0.78	19,589
2 AXLE - 6 TIRE	33,366	61.1	15,462	2.50	22,815
3 AXLES OR MORE	9,232	48.8	4,032	9.47	20,932
SUB-TOTAL	74,519	48.0	86,240	3.51	63,336
COMB. TRUCKS(2)					
3 AXLES	4,711	64.8	1,976	3.94	5,140
4 AXLES	17,712	67.8	6,837	8.13	39,548
5 AXLES OR MORE	93,939	70.0	35,079	16.08	380,537
SUB-TOTAL	116,362	69.5	43,892	14.50	425,225
ALL TRUCKS	190,881	61.1	130,132	13.07	488,561

(1) VEHICLES HAVING LOAD STATUS OF 2 ARE NOT INCLUDED. TRUCKS WITH THIS STATUS DO NOT CARRY A PAYLOAD, BUT ARE HEAVIER THAN EMPTY VEHICLES, I.E., TRUCKS MOUNTED WITH EQUIPMENT, UTILITY COMPANY SERVICE TRUCKS, ETC.

(2) INCLUDES BOTH TRACTOR-SEMI-TRLR AND TRUCK-FULL-TRLR COMBINATIONS.

UNITED STATES

Table 8 - OPERATION OF TRUCKS AND COMBINATIONS ON LOCAL RURAL ROADS-1974

UNITED STATES

FREQUENCY OF HEAVY AXLE WEIGHTS		
WEIGHT GROUP	NUMBER WEIGHED	FREQUENCY PER 1000 VEHICLES
18K OR MORE	89	86
19K OR MORE	54	52
20K OR MORE	32	31
21K OR MORE	18	17
22K OR MORE	14	14
23K OR MORE	13	13
TOTAL AXLES WEIGHED = 2,693		

FREQUENCY OF HEAVY GROSS WEIGHTS		
WEIGHT GROUP	NUMBER WEIGHED	FREQUENCY PER 1000 VEHICLES
30K OR MORE	186	180
40K OR MORE	119	115
50K OR MORE	77	74
60K OR MORE	67	65
70K OR MORE	43	42
80K OR MORE	12	12
TOTAL VEHICLES WEIGHED = 1,036		

OPERATING CHARACTERISTICS BY VEHICLE TYPE

	VEHICLES WEIGHED	PERCENT LOADED	VEHICLE/MILES ALL TRUCKS (IN MILLIONS)	AVG. CARRIED LOAD (IN TONS)(1)	CARRIED LOAD (IN MILLIONS OF TON-MILES)(1)
SINGLE UNIT TRUCKS					
2 AXLE - 4 TIRE	547	33.8	12,490	0.88	3,612
2 AXLE - 6 TIRE	213	68.5	4,131	2.34	6,605
3 AXLES OR MORE	76	51.3	1,444	12.16	9,255
SUB-TOTAL	836	44.3	18,065	3.54	19,472
COMB. TRUCKS(2)					
3 AXLES	19	68.4	136	2.04	214
4 AXLES	39	56.4	585	6.97	2,282
5 AXLES OR MORE	142	54.2	1,456	16.18	12,792
SUB-TOTAL	200	56.0	2,177	12.35	15,288
ALL TRUCKS	1,036	46.5	20,242	6.50	34,760

(1) VEHICLES HAVING LOAD STATUS OF 2 ARE NOT INCLUDED. TRUCKS WITH THIS STATUS DO NOT CARRY A PAYLOAD, BUT ARE HEAVIER THAN EMPTY VEHICLES, I.E., TRUCKS MOUNTED WITH EQUIPMENT, UTILITY COMPANY SERVICE TRUCKS, ETC.

(2) INCLUDES BOTH TRACTOR-SEMI-TRLR AND TRUCK-FULL-TRLR COMBINATIONS.

UNITED STATES

Table 8 - OPERATION OF TRUCKS AND COMBINATIONS ON URBAN ROADS-1974

UNITED STATES

FREQUENCY OF HEAVY AXLE WEIGHTS		
WEIGHT GROUP	NUMBER WEIGHED	FREQUENCY PER 1000 VEHICLES
18K OR MORE	5,547	126
19K OR MORE	3,788	86
20K OR MORE	2,713	62
21K OR MORE	1,813	41
22K OR MORE	1,260	29
23K OR MORE	830	19

TOTAL AXLES WEIGHED = 131,738

FREQUENCY OF HEAVY GROSS WEIGHTS		
WEIGHT GROUP	NUMBER WEIGHED	FREQUENCY PER 1000 VEHICLES
30K OR MORE	13,011	296
40K OR MORE	8,652	197
50K OR MORE	6,389	145
60K OR MORE	4,715	107
70K OR MORE	2,767	63
80K OR MORE	835	19

TOTAL VEHICLES WEIGHED = 43,985

OPERATING CHARACTERISTICS BY VEHICLE TYPE

	VEHICLES WEIGHED	PERCENT LOADED	VEHICLE/MILES ALL TRUCKS (IN MILLIONS)	AVG. CARRIED LOAD (IN TONS)(1)	CARRIED LOAD (IN MILLIONS OF TON-MILES)(1)
SINGLE UNIT TRUCKS					
2 AXLE - 4 TIRE	14,174	36.4	88,876	1.03	31,263
2 AXLE - 6 TIRE	11,569	63.0	21,325	2.25	31,215
3 AXLES OR MORE	2,661	45.6	5,528	9.76	22,228
SUB-TOTAL	28,404	48.1	115,729	3.06	84,706
COMB. TRUCKS(2)					
3 AXLES	1,352	70.8	3,742	3.36	9,432
4 AXLES	3,812	67.8	9,247	8.09	43,033
5 AXLES OR MORE	10,417	63.8	20,601	15.23	202,386
SUB-TOTAL	15,581	65.4	33,590	12.12	254,851
ALL TRUCKS	43,985	54.2	149,319	8.56	339,557

(1) VEHICLES HAVING LOAD STATUS OF 2 ARE NOT INCLUDED. TRUCKS WITH THIS STATUS DO NOT CARRY A PAYLOAD, BUT ARE HEAVIER THAN EMPTY VEHICLES, I.E., TRUCKS MOUNTED WITH EQUIPMENT, UTILITY COMPANY SERVICE TRUCKS, ETC.

(2) INCLUDES BOTH TRACTOR-SEMI-TRLR AND TRUCK-FULL-TRLR COMBINATIONS.

UNITED STATES

Table 8 - OPERATION OF TRUCKS AND COMBINATIONS IN INTERSTATE RURAL ROADS-1974

UNITED STATES

FREQUENCY OF HEAVY AXLE WEIGHTS			FREQUENCY OF HEAVY GROSS WEIGHTS		
WEIGHT GROUP	NUMBER WEIGHED	FREQUENCY PER 1000 VEHICLES	WEIGHT GROUP	NUMBER WEIGHED	FREQUENCY PER 1000 VEHICLES
18K OR MORE	9,634	98	30K OR MORE	58,927	599
19K OR MORE	5,175	53	40K OR MORE	45,517	463
20K OR MORE	2,979	30	50K OR MORE	36,554	371
21K OR MORE	1,818	18	60K OR MORE	28,123	286
22K OR MORE	1,082	11	70K OR MORE	14,422	147
23K OR MORE	700	7	80K OR MORE	1,428	15
TOTAL AXLES WEIGHED = 407,168			TOTAL VEHICLES WEIGHED = 98,414		

OPERATING CHARACTERISTICS BY VEHICLE TYPE

	VEHICLES WEIGHED	PERCENT LOADED	VEHICLE/MILES ALL TRUCKS (IN MILLIONS)	AVG. CARRIED LOAD (IN TONS)(1)	CARRIED LOAD (IN MILLIONS OF TON-MILES)(1)
SINGLE UNIT TRUCKS					
2 AXLE - 4 TIRE	7,150	41.5	13,077	0.78	4,944
2 AXLE - 6 TIRE	14,323	62.4	3,702	2.39	5,586
3 AXLES OR MORE	3,838	47.9	701	8.26	2,645
SUB-TOTAL	25,311	54.3	17,480	3.00	13,175
COMB. TRUCKS(2)					
3 AXLES	2,933	64.6	728	3.98	1,948
4 AXLES	10,219	69.4	2,602	7.52	14,738
5 AXLES OR MORE	59,951	72.2	15,395	15.93	168,223
SUB-TOTAL	73,103	71.5	18,725	14.43	184,909
ALL TRUCKS	98,414	67.1	36,205	13.24	198,084

(1) VEHICLES HAVING LOAD STATUS OF 2 ARE NOT INCLUDED. TRUCKS WITH THIS STATUS DO NOT CARRY A PAYLOAD, BUT ARE HEAVIER THAN EMPTY VEHICLES, I.E., TRUCKS MOUNTED WITH EQUIPMENT, UTILITY COMPANY SERVICE TRUCKS, ETC.

(2) INCLUDES BOTH TRACTOR-SEMI-TRLR AND TRUCK-FULL-TRLR COMBINATIONS.

UNITED STATES

Table 8 - OPERATION OF TRUCKS AND COMBINATIONS ON INTERSTATE URBAN ROADS-1974

UNITED STATES

FREQUENCY OF HEAVY AXLE WEIGHTS			FREQUENCY OF HEAVY GROSS WEIGHTS		
WEIGHT GROUP	NUMBER WEIGHED	FREQUENCY PER 1000 VEHICLES	WEIGHT GROUP	NUMBER WEIGHED	FREQUENCY PER 1000 VEHICLES
18K OR MORE	1,577	204	30K OR MORE	4,233	546
19K OR MORE	996	129	40K OR MORE	3,050	394
20K OR MORE	665	86	50K OR MORE	2,313	299
21K OR MORE	459	59	60K OR MORE	1,714	221
22K OR MORE	328	42	70K OR MORE	993	128
23K OR MORE	225	29	80K OR MORE	225	29
TOTAL AXLES WEIGHED = 28,662			TOTAL VEHICLES WEIGHED = 7,747		

OPERATING CHARACTERISTICS BY VEHICLE TYPE

	VEHICLES WEIGHED	PERCENT LOADED	VEHICLE/MILES ALL TRUCKS (IN MILLIONS)	AVG. CARRIED LOAD (IN TONS)(1)	CARRIED LOAD (IN MILLIONS OF TON-MILES)(1)
SINGLE UNIT TRUCKS					
2 AXLE - 4 TIRE	779	48.8	9,559	1.40	7,708
2 AXLE - 6 TIRE	1,781	68.1	3,988	2.13	6,043
3 AXLES OR MORE	360	51.9	664	9.51	3,256
SUB-TOTAL	2,920	60.9	14,211	2.90	17,007
COMB. TRUCKS(2)					
3 AXLES	312	76.9	692	3.62	2,059
4 AXLES	1,226	73.2	2,825	7.92	15,781
5 AXLES OR MORE	3,289	71.0	9,422	14.95	102,779
SUB-TOTAL	4,827	71.9	12,939	12.23	120,619
ALL TRUCKS	7,747	67.8	27,150	10.13	137,626

(1) VEHICLES HAVING LOAD STATUS OF 2 ARE NOT INCLUDED. TRUCKS WITH THIS STATUS DO NOT CARRY A PAYLOAD, BUT ARE HEAVIER THAN EMPTY VEHICLES, I.E., TRUCKS MOUNTED WITH EQUIPMENT, UTILITY COMPANY SERVICE TRUCKS, ETC.

(2) INCLUDES BOTH TRACTOR-SEMI-TRLR AND TRUCK-FULL-TRLR COMBINATIONS.

UNITED STATES

Table 8 - OPERATION OF TRUCKS AND COMBINATIONS ON PRIMARY RURAL ROADS-1974

UNITED STATES

FREQUENCY OF HEAVY AXLE WEIGHTS			FREQUENCY OF HEAVY GROSS WEIGHTS		
WEIGHT GROUP	NUMBER WEIGHED	FREQUENCY PER 1000 VEHICLES	WEIGHT GROUP	NUMBER WEIGHED	FREQUENCY PER 1000 VEHICLES
18K OR MORE	12,123	139	30K OR MORE	33,471	383
19K OR MORE	7,656	88	40K OR MORE	24,739	283
20K OR MORE	5,141	59	50K OR MORE	19,692	225
21K OR MORE	3,508	40	60K OR MORE	15,098	173
22K OR MORE	2,373	27	70K OR MORE	8,763	100
23K OR MORE	1,621	19	80K OR MORE	1,861	21
TOTAL AXLES WEIGHED = 295,206			TOTAL VEHICLES WEIGHED = 87,492		

OPERATING CHARACTERISTICS BY VEHICLE TYPE

	VEHICLES WEIGHED	PERCENT LOADED	VEHICLE/MILES ALL TRUCKS (IN MILLIONS)	AVG. CARRIED LOAD (IN TONS)(1)	CARRIED LOAD (IN MILLIONS OF TON-MILES)(1)
SINGLE UNIT TRUCKS					
2 AXLE - 4 TIRE	23,237	31.8	32,800	0.78	10,102
2 AXLE - 6 TIRE	17,953	60.1	7,501	2.60	11,615
3 AXLES OR MORE	5,105	48.8	2,012	10.32	10,364
SUB-TOTAL	46,295	44.7	42,313	3.67	32,081
COMB. TRUCKS(2)					
3 AXLES	1,645	65.8	832	3.99	2,376
4 AXLES	7,008	65.7	2,740	9.06	16,376
5 AXLES OR MORE	32,544	66.1	14,825	16.46	162,876
SUB-TOTAL	41,197	66.0	18,397	14.71	181,628
ALL TRUCKS	87,492	54.7	60,710	11.98	213,709

(1) VEHICLES HAVING LOAD STATUS OF 2 ARE NOT INCLUDED. TRUCKS WITH THIS STATUS DO NOT CARRY A PAYLOAD, BUT ARE HEAVIER THAN EMPTY VEHICLES, I.E., TRUCKS MOUNTED WITH EQUIPMENT, UTILITY COMPANY SERVICE TRUCKS, ETC.

(2) INCLUDES BOTH TRACTOR-SEMI-TRLR AND TRUCK-FULL-TRLR COMBINATIONS.

UNITED STATES

Table 8 - OPERATION OF TRUCKS AND COMBINATIONS ON PRIMARY URBAN ROADS-1974

UNITED STATES

FREQUENCY OF HEAVY AXLE WEIGHTS		
WEIGHT GROUP	NUMBER WEIGHED	FREQUENCY PER 1000 VEHICLES
18K OR MORE	3,352	117
19K OR MORE	2,340	82
20K OR MORE	1,723	60
21K OR MORE	1,140	40
22K OR MORE	780	27
23K OR MORE	493	17

TOTAL AXLES WEIGHED = 83,339

FREQUENCY OF HEAVY GROSS WEIGHTS		
WEIGHT GROUP	NUMBER WEIGHED	FREQUENCY PER 1000 VEHICLES
30K OR MORE	7,427	259
40K OR MORE	4,825	168
50K OR MORE	3,554	124
60K OR MORE	2,620	91
70K OR MORE	1,510	53
80K OR MORE	507	18

TOTAL VEHICLES WEIGHED = 28,652

OPERATING CHARACTERISTICS BY VEHICLE TYPE

	VEHICLES WEIGHED	PERCENT LOADED	VEHICLE/MILES ALL TRUCKS (IN MILLIONS)	AVG. CARRIED LOAD (IN TONS)(1)	CARRIED LOAD (IN MILLIONS OF TON-MILES)(1)
SINGLE UNIT TRUCKS					
2 AXLE - 4 TIRE	9,928	35.4	33,500	1.03	9,782
2 AXLE - 6 TIRE	7,756	62.0	8,046	2.24	11,397
3 AXLES OR MORE	1,867	45.9	1,555	9.88	6,067
SUB-TOTAL	19,551	46.9	43,101	3.10	27,246
COMB. TRUCKS(2)					
3 AXLES	821	67.5	834	3.03	1,830
4 AXLES	2,143	64.9	2,020	8.30	9,812
5 AXLES OR MORE	6,137	61.1	5,955	15.19	56,013
SUB-TOTAL	9,101	62.6	8,809	12.15	67,655
ALL TRUCKS	28,652	51.9	51,910	7.91	94,901

(1) VEHICLES HAVING LOAD STATUS OF 2 ARE NOT INCLUDED. TRUCKS WITH THIS STATUS DO NOT CARRY A PAYLOAD, BUT ARE HEAVIER THAN EMPTY VEHICLES, I.E., TRUCKS MOUNTED WITH EQUIPMENT, UTILITY COMPANY SERVICE TRUCKS, ETC.

(2) INCLUDES BOTH TRACTOR-SEMI-TRLR AND TRUCK-FULL-TRLR COMBINATIONS.

UNITED STATES

Table 8 - OPERATION OF TRUCKS AND COMBINATIONS ON SECONDARY RURAL ROADS--1974

UNITED STATES

FREQUENCY OF HEAVY AXLE WEIGHTS			FREQUENCY OF HEAVY GROSS WEIGHTS		
WEIGHT GROUP	NUMBER WEIGHED	FREQUENCY PER 1000 VEHICLES	WEIGHT GROUP	NUMBER WEIGHED	FREQUENCY PER 1000 VEHICLES
18K OR MORE	1,018	169	30K OR MORE	2,043	340
19K OR MORE	625	104	40K OR MORE	1,410	235
20K OR MORE	393	65	50K OR MORE	1,066	177
21K OR MORE	247	41	60K OR MORE	798	133
22K OR MORE	177	29	70K OR MORE	500	83
23K OR MORE	122	20	80K OR MORE	198	33
TOTAL AXLES WEIGHED = 18,510			TOTAL VEHICLES WEIGHED = 6,011		

OPERATING CHARACTERISTICS BY VEHICLE TYPE

	VEHICLES WEIGHED	PERCENT LOADED	VEHICLE/MILES ALL TRUCKS (IN MILLIONS)	AVG. CARRIED LOAD (IN TONS)(1)	CARRIED LOAD (IN MILLIONS OF TON-MILES)(1)
SINGLE UNIT TRUCKS					
2 AXLE - 4 TIRE	2,081	34.7	33,359	0.68	8,155
2 AXLE - 6 TIRE	1,303	61.9	8,390	2.21	12,219
3 AXLES OR MORE	365	57.8	2,763	10.45	17,178
SUB-TOTAL	3,749	46.4	44,512	3.59	37,552
COMB. TRUCKS(2)					
3 AXLES	152	59.9	552	3.03	1,030
4 AXLES	524	64.9	2,080	8.49	10,716
5 AXLES OR MORE	1,586	64.8	6,315	15.81	62,230
SUB-TOTAL	2,262	64.5	8,947	13.33	73,976
ALL TRUCKS	6,011	53.2	53,459	9.90	111,528

(1) VEHICLES HAVING LOAD STATUS OF 2 ARE NOT INCLUDED. TRUCKS WITH THIS STATUS DO NOT CARRY A PAYLOAD, BUT ARE HEAVIER THAN EMPTY VEHICLES, I.E., TRUCKS MOUNTED WITH EQUIPMENT, UTILITY COMPANY SERVICE TRUCKS, ETC.

(2) INCLUDES BOTH TRACTOR-SEMI-TRLR AND TRUCK-FULL-TRLR COMBINATIONS.

Table 8 - OPERATION OF TRUCKS AND COMBINATIONS ON SECONDARY URBAN ROADS-1974

FREQUENCY OF HEAVY AXLE WEIGHTS			FREQUENCY OF HEAVY GROSS WEIGHTS		
WEIGHT GROUP	NUMBER WEIGHED	FREQUENCY PER 1000 VEHICLES	WEIGHT GROUP	NUMBER WEIGHED	FREQUENCY PER 1000 VEHICLES
18K OR MORE	618	81	30K OR MORE	1,351	178
19K OR MORE	452	60	40K OR MORE	777	102
20K OR MORE	325	43	50K OR MORE	522	69
21K OR MORE	214	28	60K OR MORE	381	50
22K OR MORE	152	20	70K OR MORE	264	35
23K OR MORE	112	15	80K OR MORE	103	14
TOTAL AXLES WEIGHED = 19,737			TOTAL VEHICLES WEIGHED = 7,586		

OPERATING CHARACTERISTICS BY VEHICLE TYPE

	VEHICLES WEIGHED	PERCENT LOADED	VEHICLE/MILES ALL TRUCKS (IN MILLIONS)	AVG. CARRIED LOAD (IN TONS)(1)		CARRIED LOAD (IN MILLIONS OF TON-MILES)(1)
				LOAD	LOAD	
SINGLE UNIT TRUCKS						
2 AXLE - 4 TIRE	3,467	36.4	45,917	0.87		13,773
2 AXLE - 6 TIRE	2,032	62.4	9,291	2.28		13,775
3 AXLES OR MORE	434	38.9	3,309	9.33		12,905
SUB-TOTAL	5,933	45.5	58,417	2.54		40,453
COMB. TRUCKS(2)						
3 AXLES	219	74.4	2,216	3.59		5,543
4 AXLES	443	66.8	4,402	6.71		17,440
5 AXLES OR MORE	991	56.5	5,224	15.49		43,594
SUB-TOTAL	1,653	61.6	11,842	10.41		66,577
ALL TRUCKS	7,586	49.0	70,259	5.84		107,030

(1) VEHICLES HAVING LOAD STATUS OF 2 ARE NOT INCLUDED. TRUCKS WITH THIS STATUS DO NOT CARRY A PAYLOAD, BUT ARE HEAVIER THAN EMPTY VEHICLES, I.E., TRUCKS MOUNTED WITH EQUIPMENT, UTILITY COMPANY SERVICE TRUCKS, ETC.

(2) INCLUDES BOTH TRACTOR-SEMI-TRAILER AND TRUCK-FULL-TRAILER COMBINATIONS.

UNITED STATES

Table 8 - OPERATION OF TRUCKS AND COMBINATIONS ON ALL ROADS-1974^{3/}

UNITED STATES

FREQUENCY OF HEAVY AXLE WEIGHTS

WEIGHT GROUP	NUMBER WEIGHED	FREQUENCY PER 1000 VEHICLES
18K OR MORE	28,322	120
19K OR MORE	17,244	73
20K OR MORE	11,226	48
21K OR MORE	7,386	31
22K OR MORE	4,892	21
23K OR MORE	3,273	14

TOTAL AXLES WEIGHED = 852,622

FREQUENCY OF HEAVY GROSS WEIGHTS

WEIGHT GROUP	NUMBER WEIGHED	FREQUENCY PER 1000 VEHICLES
30K OR MORE	107,452	455
40K OR MORE	80,318	340
50K OR MORE	63,701	270
60K OR MORE	48,734	207
70K OR MORE	26,452	112
80K OR MORE	4,322	18

TOTAL VEHICLES WEIGHED = 235,902

OPERATING CHARACTERISTICS BY VEHICLE TYPE

	VEHICLES WEIGHED	PERCENT LOADED	VEHICLE/MILES ALL TRUCKS (IN MILLIONS)	AVG. CARRIED LOAD (IN TONS)(1)	CARRIED LOAD (IN MILLIONS OF TON-MILES)(1)
SINGLE UNIT TRUCKS					
2 AXLE - 4 TIRE	46,642	34.8	168,112	0.86	54,464
2 AXLE - 6 TIRE	45,148	61.6	40,918	2.43	60,635
3 AXLES OR MORE	11,969	48.1	11,004	9.53	52,415
SUB-TOTAL	103,759	48.0	220,034	3.39	167,514
COMB. TRUCKS(2)					
3 AXLES	6,082	66.2	5,854	3.77	14,786
4 AXLES	21,563	67.8	16,669	8.12	84,863
5 AXLES OR MORE	104,498	69.3	57,136	15.98	595,715
SUB-TOTAL	132,143	68.9	79,659	14.21	695,364
ALL TRUCKS	235,902	59.7	299,693	12.40	862,878

(1) VEHICLES HAVING LOAD STATUS OF 2 ARE NOT INCLUDED. TRUCKS WITH THIS STATUS DO NOT CARRY A PAYLOAD, BUT ARE HEAVIER THAN EMPTY VEHICLES, I.E., TRUCKS MOUNTED WITH EQUIPMENT, UTILITY COMPANY SERVICE TRUCKS, ETC.

(2) INCLUDES BOTH TRACTOR-SEMI-TRLR AND TRUCK-FULL-TRLR COMBINATIONS.

(3) ALL ROADS = M/R + L/R + URB = I/R + P/R + S/R + I/U + P/U + S/U

