

DAIMLER

Daimler Trucks North America
Nasser Zamani
Senior Manager
Compliance and Regulatory Affairs

December 22, 2010

Dan Smith
Associate Administrator for Vehicle Safety
National Highway Traffic Safety Administration
1200 New Jersey Avenue S.E., Washington D.C. 20590

**Re: Defect Information Report – Supplemental Report No. 2
10V-468 & 10V-472, 10C-6, MBE900 EPA07 Reprogramming**

Mr. Smith,

In accordance with Part 573 of Title 49 of the Code of Federal Regulations, Daimler Trucks North America LLC herewith submits supplemental defect information and copies of documents distributed to dealers.

(c)(6) Chronology of principal events: In March 2010 DTNA filed a Defect Information Report with NHTSA regarding emergency vehicles equipped with EPA07 Series 60 engines programmed to allow the vehicle to shut down when the Diesel Particulate Filter (DPF) reached an over temperature condition and prior warnings to the vehicle operator had been ignored. Further investigation revealed that engine software designed to protect the vehicle in the event of a DPF over temperature condition, and normally used in commercial vehicle applications, had been applied to school bus and emergency vehicle applications equipped with MBE900 EPA07 certified engines.

(c)(8)(ii) Dealers and distributor notification: Posted December 10, 2010, Mailed December 17, 2010

(c) (10) Copies of Communications sent to dealers are attached.

Please contact me if you have any questions.

Sincerely yours,



Nasser Zamani
Cc: Michael Mason, CAL-OSHA

A Daimler Company

Daimler Trucks North America LLC
4747 N. Channel Avenue
Portland OR 97217-7699
503-745-6910 Phone
503-745-5544 Fax
Nasser.Zamani@Daimler.com



Detroit Diesel Corporation
13400 Outer Drive, West
Detroit, Michigan 48239-4001
Telephone: 313-592-5000

Attention: Equipment Owner

**Subject: Safety Recall 10C6
MBE900 EPA07 MCM Reprogramming In School Bus and
Emergency Vehicle Applications**

This notice is sent to you in accordance with requirement of the National Traffic and Motor Vehicle Safety Act. This notice is also sent in accordance with the Canadian Motor Vehicles Safety Act.

Detroit Diesel has decided that a defect which relates to motor vehicle safety exists in certain EPA07 MBE900 engines equipped in School Bus and Fire Truck Applications.

Certain certified EPA07 MBE900 engines in school bus and emergency vehicle applications will require reprogramming of the MCM with **v11.4.0.0** software (*or higher*) and fuel map version ZGS 005 (*or higher*). Reprogramming the MCM will prevent engine shutdown if the Diesel Particulate Filter (DPF) in the Exhaust After Treatment Device (ATD) reaches DPF zone 5 which could hamper rescue operations and place the public at risk.

Records available to us indicate that your vehicle is equipped with one of these affected engines. Detroit Diesel will repair your engine at no charge to you.

We ask that you take your unit to the closest Authorized Repair Facility to have the work performed. We estimate that the labor time required to perform this Safety Recall on your engine is approximately 0.5 hour.

If you have any questions about this Safety Recall you may call our Customer Support Center at (313) 592-5800. If you believe that Detroit Diesel has failed or is unable to remedy the defect without charge within a reasonable time, you may submit a complaint to the Administrator, National Highway Traffic Safety Administration, 1200 New Jersey Avenue, S.E., Washington, D.C. 20590 or call the toll-free Vehicle Safety Hotline at 1-888-327-4236 (TTY: 1-800-424-9153); or to <http://www.safercar.gov>. If your vehicle is involved in the Canadian portion, you may wish to notify Transport Canada, ASFAD, Place de Ville Tower C, 330 Sparks Street, Ottawa, ON K1A 0N5, or phone (800) 333-0510.



Detroit Diesel Corporation
13400 Outer Drive, West
Detroit, Michigan 48239-4001
Telephone: 313-592-5000

- 2 -

If you had this repair done before you received this letter, you may be eligible to receive reimbursement for the cost of obtaining a pre-notification remedy of the problem associated with this recall. **If you are the lessor of this vehicle, Federal Law requires that you forward this notice to the lessee within ten days.** For more information, contact Customer Support Center at Detroit Diesel Corporation, 13400 Outer Drive West, Detroit, MI 48239 or call (313) 592-5800.

We regret any inconvenience this action may cause. However, we have taken this action in the interest of your continued satisfaction with our products as well as our interest in motor vehicle safety.

**DETROIT DIESEL
SAFETY RECALL 10C6
SERVICE ADMINISTRATION CAMPAIGN COORDINATOR (BX-5)**



Detroit Diesel Corporation
13400 Outer Drive, West
Detroit, Michigan 48239-4001
Telephone: 313-592-5000

December 17, 2010

To: U.S. and Canadian Distributors and FLLC Dealers

Attn.: General Service Manager

Subject: **Safety Recall 10C6**
**MBE900 EPA07 MCM Reprogramming In School Bus and
Emergency Vehicle Applications**

Attached is your copy of Safety Recall 10C6. Also attached is a list of engine serial numbers that, according to our records, are affected by Safety Recall 10C6.

Certain certified EPA07 MBE900 engines in school bus and emergency vehicle applications will require reprogramming of the MCM with **v11.4.0.0** software (*or* higher) and fuel map version ZGS 005 (*or* higher). Reprogramming the MCM will prevent engine shutdown if the Diesel Particulate Filter (DPF) in the Exhaust After Treatment Device (ATD) reaches DPF zone 5 which could hamper rescue operations and place the public at risk.

If any of these engines have been sold and delivered, it will be required that owners be notified of this Recall so corrective action can be taken. Owners can be notified by sending the attached owner letter. **However, Dealers must complete all outstanding Recalls prior to the sale or delivery of an engine. Dealers will be liable for any progressive damage that results from its failure to complete Recalls before sale or delivery of an engine.**

Instructions for indicating that Campaign 10C6 has been completed are noted in the Safety Recall Bulletin.

If you determine that any of the engines listed, are now located outside your area, or in the event you have any questions, contact Detroit Diesel.

The **Detroit Diesel Warranty System** can be utilized to determine if a particular engine serial number is affected by this campaign.

The attached Safety Recall Bulletin should be used when communicating this Recall to your service organization.

Sincerely,

A handwritten signature in black ink that reads "David P. Dole". The signature is written in a cursive, slightly slanted style.

David P. Dole, Sr. Manager
Warranty Operations

SAFETY RECALL BULLETIN

Subject: **Safety Recall 10C6**
MBE900 EPA07 MCM Reprogramming In School Bus and
Emergency Vehicle Applications

Defect Involved

Detroit Diesel Corporation (DDC) has determined that some certified EPA07 MBE900 engines in school bus and emergency vehicle applications will require reprogramming of the MCM with **v11.4.0.0** software (*or higher*) and fuel map version ZGS 005 (*or higher*). Reprogramming the MCM will prevent engine shutdown if the Diesel Particulate Filter (DPF) in the Exhaust After Treatment Device (ATD) reaches DPF zone 5.

If CPC software is not at **r4.03** (*or higher*), the CPC must also be reprogrammed.

V11.4.0.0 MCM software with fuel map version ZGS 005 became effective for Service in June, 2010.

R4.03 CPC software became effective for Service in December, 2008.

Engines Involved

A list of engines located in your area of responsibility that require this correction is attached.

The table below gives descriptive information to help identify the affected units:

Model Series	Model Year	Inclusive Mfg. Date (From) (To)	Descriptive Information
MBE900	2007 2008 2009	2007 to 2009	Fire Truck <i>and</i> Emergency Vehicle Applications

Safety Recall Bulletin 10C6

Page Two

Owner Notification

Detroit Diesel will notify owners of equipment incorporating engines identified with this safety recall. A copy of the owner letter that will be used by Detroit Diesel is enclosed with this recall notice.

Distributor / Dealer Modification Responsibility

Detroit Diesel Repair Facilities are to service all engines subject to this recall. The recall is to be performed at no charge to owners on all affected engines under the provisions of this recall notice.

Please use the appropriate steps, noted below, for indicating that Safety Recall 10C6 has been completed.

Freightliner, Sterling, and Western Star Trucks

- Check the base label (**Form WAR259**) to see if **Safety Recall 10C6** has been completed. The base label is usually located on the passenger-side door about 12 inches (30 cm) below the door latch. If **Safety Recall 10C6** has been completed, no further work is needed. If base label is not located on the passenger-side door, please affix label (**Form WAR259**) 12 inches or 30 cm from the door latch.
- Upon completion of **Safety Recall 10C6**, clean a spot on the base label (**Form WAR259**), write the Safety Recall Number (**10C6**) on a blank, red completion sticker (**Form WAR260**), and attach it to the base label.

Ordering Information

1. If you do not have the appropriate Form *or* Labels (DDC_WAR 259, DDC_WAR 260, DDC_WAR 261), they can be ordered them from Access EPI by going to the Detroit Diesel Extranet and click on Access EPI as well as going directly to ddc@epiinc.com.
2. You can also fax in your order to **(269) 968-4260**; *or*
3. Contact EPI directly at **(269) 964-4600 Ext. 5806**.

Parts Information

There are no parts required for this safety recall.

Corrective Procedure

1. Apply the parking brake, chock the wheels, and perform any other applicable safety steps.
2. Using the “Identification” screen in DDRS, check the MCM software level and fuel map version. See Figure 1. In this example, the MCM software level is 11.4.0.0 and the fuel map version is the last three digits of the fuel map part number after the letters ZGS which is 005.

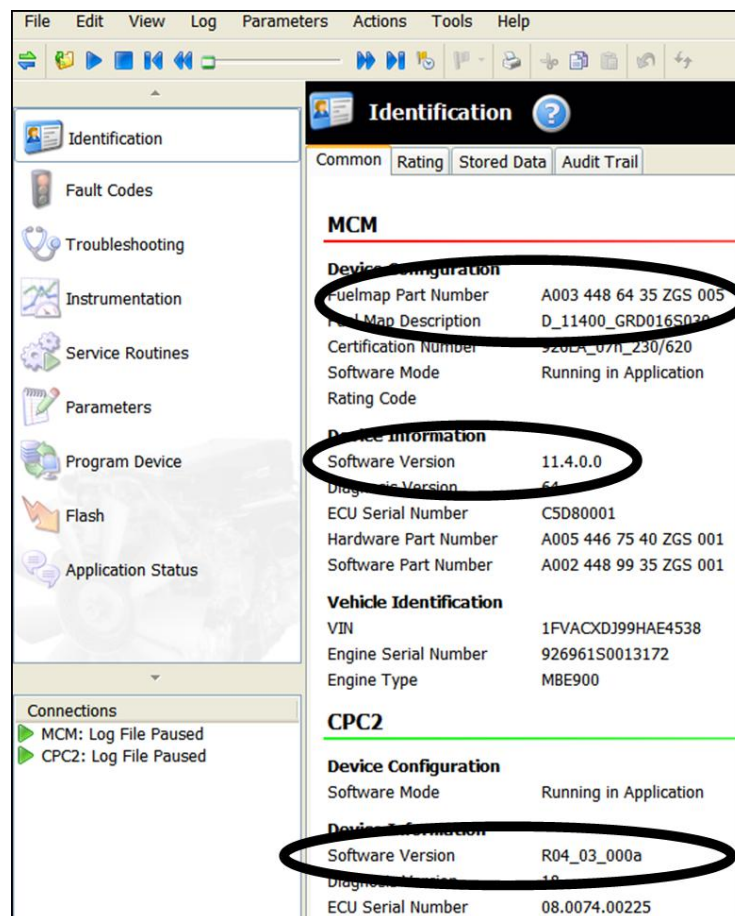


Figure 1 – Software And Fuel Map Version Number

Safety Recall Bulletin 10C6

Page Four

3. If the MCM is not at software 11.4.0.0 with fuel map version 005 or higher, program it to 11.4.0.0 or higher using the “Update Device Software” option. Select “No Charge”, then “Description”, and enter “10C6” in the “Provide Reference” box.
4. Using the “Identification” screen in DDRS, check the CPC software level. See Figure 1. In this example, the CPC software level is r4.03. If the CPC is not at r4.03 software or higher, program it using the “Update Device Software” option. Select “No Charge”, then “Description”, and enter “10C6” in the “Provide Reference” box.
5. When programming is complete, click the “Finish” button and perform the following. Reference Technical Service letter 07 TS-53.
 - a) Turn the vehicle ignition OFF, disconnect the USB Link at either the computer port or vehicle diagnostic port, and wait one minute.
 - b) Turn the vehicle ignition ON and wait one minute for the MCM and CPC to synchronize with each other.
 - c) Reconnect the USB Link, reconnect DDRS to the MCM and CPC, and confirm the proper software levels.
6. Start the engine and verify the repairs.

Warranty Information

Claim Type:	04
Modification:	10C6
Fault Type:	ZZ
Primary Failed Part:	REPROGRAM
Labor:	0.5 Hours (MCM only) 0.7 Hours (MCM and CPC)
Labor Code:	R10C6 (MCM only) R10C6A (MCM and CPC)
Parts Return:	NONE

Should you have any additional questions, please contact Detroit Diesel.

DETROIT DIESEL
13400 Outer Drive West
Detroit, Michigan 48239-4001

BULLETIN