

[54] VEHICLE TIRE

[76] Inventors: Norio Iwata, No. 29-1, 2-chome, Onta-Cho, Higashi-Murayama, Tokyo; Hiroshi Kojima, No. 19-5, 4-chome, Higashi-Toyota, Hino, Tokyo, both of Japan

[\*\*] Term: 14 Years

[21] Appl. No.: 765,125

[22] Filed: Feb. 3, 1977

[30] Foreign Application Priority Data

Sept. 22, 1976 Japan ..... 51-37327

[51] Int. Cl. .... D12-15

[52] U.S. Cl. .... D12/143

[58] Field of Search ..... D12/134, 136, 137, 141-143, D12/145-151; 152/209 R, 209 A, 209 WT, 209 D

[56] References Cited

U.S. PATENT DOCUMENTS

D. 221,916 9/1971 Fetty et al. .... D12/142

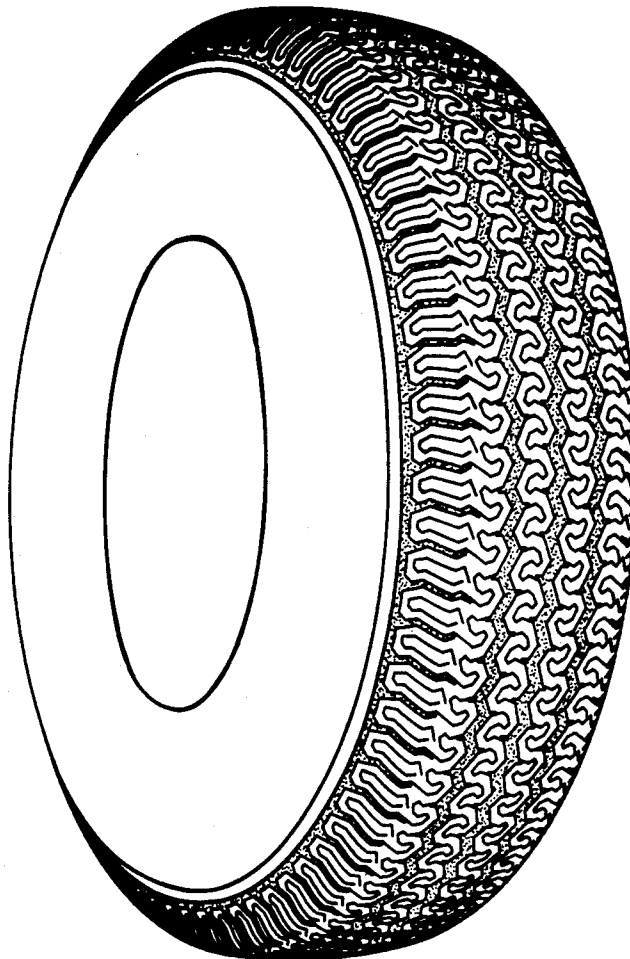
Primary Examiner—Wallace R. Burke  
Assistant Examiner—James M. Gandy  
Attorney, Agent, or Firm—I. Irving Silverman

[57] CLAIM

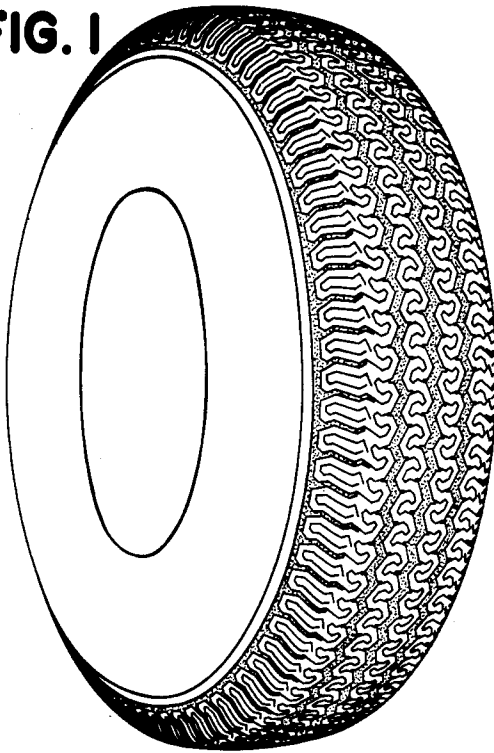
The ornamental design for a vehicle tire, substantially as shown and described.

DESCRIPTION

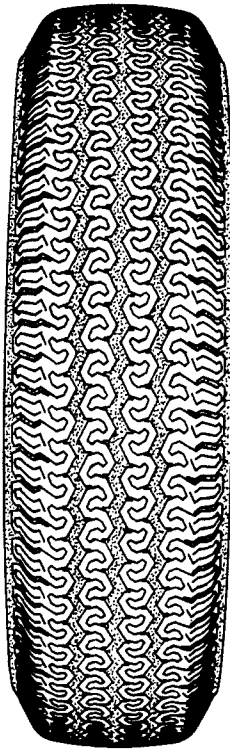
FIG. 1 is a perspective view of a vehicle tire showing our new design it being understood that the tread design is repeated throughout the circumference of the tire, the opposite side being substantially the same as that shown; FIG. 2 is a side elevational view thereof; FIG. 3 is a front elevational view thereof; FIG. 4 is an enlarged fragmentary plan view of the tread design thereof; and FIG. 5 is an enlarged cross-sectional view thereof taken along line 5-5 of FIG. 4.



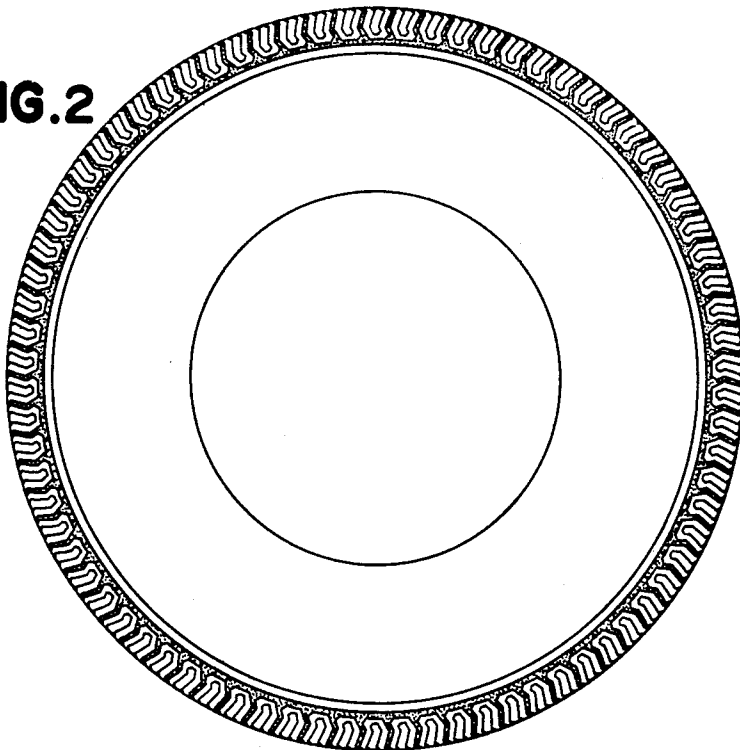
**FIG. 1**



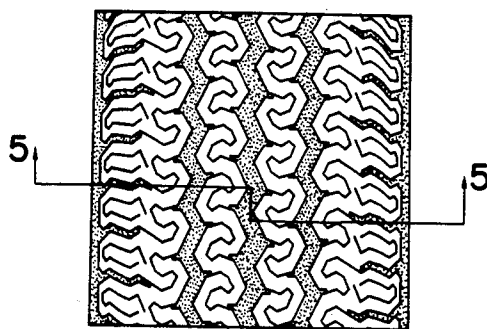
**FIG. 3**



**FIG. 2**



**FIG.4**



**FIG.5**

