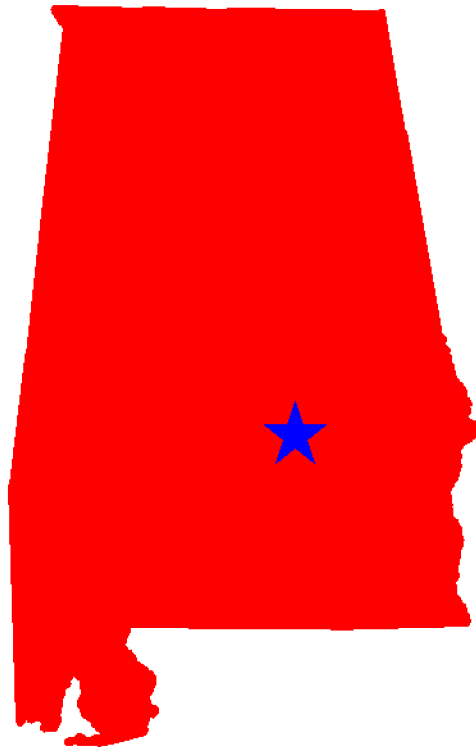




## Traffic Safety Facts Alabama 2005-2009



This Report Contains Data From the Following Sources:

- Fatality Data - NCSA Fatality Analysis Reporting System (FARS): 2005-2008 Final File and 2009 Annual Report File (ARF)
- Observed Safety Belt Data - NCSA National Occupant Protection Use Survey (NOPUS) and the Alabama State Survey
- Vehicle Miles of Travel Data and Motorcycle Registrations - Federal Highway Administration (FHWA)
- Population Data - U.S. Bureau of the Census



## Table of Contents (Listed by Table Title and Page Number)

3. Traffic Safety Performance Measures
4. Fatality Rates: Alabama , U.S. and Best State
5. Alcohol-Related Fatalities: Alabama , U.S. and Best State (Old Definition)
6. Alcohol-Impaired Driving Fatalities: Alabama , U.S. and Best State (New Definition)
7. Fatalities Per 100 Million VMT: Alabama , U.S.
7. Alcohol-Impaired Driving Fatalities Per 100 Million VMT: Alabama , U.S.
8. Blood Alcohol Concentration (BAC) Reporting Rates For Drivers/Motorcycle Rider (Operators) Involved in Fatal Crashes: Alabama , U.S. and Best State
9. Front Seat Passenger Vehicle Occupants, Aged 5 and Over, by Restraint Use: Fatalities and Observed Alabama , U.S. and Best State
10. Front Seat Passenger Vehicle Occupant Fatalities, Aged 5 and Over, by Percent Restraint Use: Alabama , U.S.
10. Front Seat Passenger Vehicle Occupants Observed, Aged 5 and Over, by Percent Restraint Use: Alabama , U.S.
11. Passenger Vehicle Occupant Fatalities Aged 5 and Above by Restraint Use and Lives Saved Estimates
11. Passenger Vehicle Occupant Fatalities Aged Under 5 by Restraint Use and Lives Saved Estimates
12. Motorcyclist Fatalities by Helmet Use and Lives Saved Estimates
13. Fatalities by Person Type
14. Fatalities by Crash Type
15. Motorcyclist Fatalities by Age
15. Motorcyclist Fatalities Per 100,000 Registered Motorcycles
16. Fatalities by Person Type and Race/Hispanic Origin
17. Top 10 Counties for Fatalities
18. Top 10 Counties for Fatalities: Year to Year Percent Change
19. Top 10 Counties for Fatality Rates
20. Motor Vehicle Crash Fatality Maps:  
Total Fatalities, Alcohol-Impaired Driving Fatalities, Single Vehicle Crash Fatalities
21. Motor Vehicle Crash Fatality Maps:  
Large Truck Crash Fatalities, Speeding Involved Fatalities, Roadway Departure Fatalities
22. Motor Vehicle Crash Fatality Maps:  
Intersection Fatalities, Passenger Car Occupants, Light Truck and Van Occupants
23. Motor Vehicle Crash Fatality Maps:  
Motorcyclist Fatalities, Pedestrian Fatalities, Pedestrian Fatalities



## Traffic Safety Performance (Core Outcome) Measures\* For Alabama

Core Outcome Measures		Year				
		2005	2006	2007	2008	2009
<b>Traffic Fatalities</b>	<b>Total</b>	1,148	1,207	1,110	969	848
	<b>Rural</b>	761	794	726	608	496
	<b>Urban</b>	387	408	380	359	281
	<b>Unknown</b>	0	5	4	2	71
<b>Fatalities Per 100 Million Vehicle Miles Driven</b>	<b>Total</b>	1.92	1.99	1.81	1.63	1.51
	<b>Rural</b>	2.59	2.69	2.44	2.10	1.74
	<b>Urban</b>	1.28	1.31	1.20	1.18	1.02
<b>Passenger Vehicle Occupant Fatalities (All Seat Positions)</b>	<b>Total</b>	966	973	905	751	661
	<b>Restrained</b>	364	369	334	271	263
	<b>Unrestrained</b>	561	568	538	452	378
	<b>Unknown</b>	41	36	33	28	20
<b>Alcohol-Impaired Driving Fatalities (BAC=.08+)**</b>		373	377	377	314	280
<b>Speeding-Related Fatalities</b>		502	568	497	447	327
<b>Motorcyclist Fatalities</b>	<b>Total</b>	62	105	85	100	76
	<b>Helmeted</b>	59	95	77	85	69
	<b>Unhelmeted</b>	3	10	8	15	7
	<b>Unknown</b>	0	0	0	0	0
<b>Drivers Involved in Fatal Crashes</b>	<b>Total</b>	1,553	1,583	1,470	1,289	1,137
	<b>Aged Under 15</b>	3	3	4	1	4
	<b>Aged 15-20</b>	216	227	190	162	136
	<b>Aged Under 21</b>	219	230	194	163	140
	<b>Aged 21 and Over</b>	1,320	1,337	1,261	1,115	985
	<b>Unknown Age</b>	14	16	15	11	12
<b>Pedestrian Fatalities</b>		73	78	69	68	64

\*These Performance Measures Were Developed By The National Highway Traffic Safety Administration (NHTSA) and the Governors Highway Safety Association (GHSA) (See Publication: DOT HS 811 025)

\*\*Based on the BAC of All Involved Drivers and Motorcycle Riders (Operators) Only

[Back To The Table of Contents](#)



### Fatality Rates: Alabama , U.S. and Best State

Year		Fatalities	Total Vehicle Miles Traveled (Millions)	Fatalities Per 100 Million Vehicle Miles Traveled	Total Population	Fatalities Per 100,000 Population
2005	Alabama	1,148	59,640	1.92	4,545,049	25.26
	US	43,510	2,989,430	1.46	295,753,151	14.71
	Best State*			0.80		6.83
2006	Alabama	1,207	60,668	1.99	4,597,688	26.25
	US	42,708	3,014,371	1.42	298,593,212	14.30
	Best State*			0.78		6.34
2007	Alabama	1,110	61,410	1.81	4,637,904	23.93
	US	41,259	3,031,124	1.36	301,579,895	13.68
	Best State*			0.79		6.54
2008	Alabama	969	59,303	1.63	4,677,464	20.72
	US	37,423	2,976,528	1.26	304,374,846	12.30
	Best State*			0.67		5.56
2009	Alabama	848	56,061	1.51	4,708,708	18.01
	US	33,808	2,953,501	1.14	307,006,550	11.01
	Best State*			0.61		4.84

\*State (or States) With Lowest Rates: Lowest VMT and Population Rates Could Be in Different States

[Back To The Table of Contents](#)



Fatalities By The Highest Blood Alcohol Concentration (BAC) in the Crash\*\*:  
Alabama , U.S. and Best State  
(Old Definition)

Year		Total Fatalities in all Crashes	Highest BAC level in the Crash					
			BAC = .01+			BAC = .08+		
			Number	Percent	Per 100 Million VMT	Number	Percent	Per 100 Million VMT
2005	Alabama	1,148	445	39	0.75	394	34	0.66
	US	43,510	17,590	40	0.59	15,102	35	0.51
	Best State*			14	0.16		12	0.14
2006	Alabama	1,207	477	40	0.79	409	34	0.67
	US	42,708	17,738	42	0.59	15,144	35	0.50
	Best State*			24	0.26		20	0.22
2007	Alabama	1,110	466	42	0.76	400	36	0.65
	US	41,259	17,158	42	0.57	14,603	35	0.48
	Best State*			24	0.27		21	0.23
2008	Alabama	969	399	41	0.67	344	36	0.58
	US	37,423	15,449	41	0.52	13,258	35	0.45
	Best State*			21	0.21		16	0.16
2009	Alabama	848	351	41	0.63	306	36	0.55
	US	33,808	14,188	42	0.48	12,233	36	0.41
	Best State*			23	0.22		18	0.16

\*State (or States) With Lowest Percents: Lowest Percents Could Be in Different States

\*\*Based on the BAC of All Involved Drivers, Motorcycle Riders (Operators), Pedalcyclists and Pedestrians

[Back To The Table of Contents](#)



Alcohol-Impaired Driving Fatalities\*\*:  
Alabama , U.S. and Best State  
(New Definition)

Year		Total Fatalities in all Crashes	Alcohol-Impaired Driving Fatalities (BAC = .08+)		
			Number	Percent	Per 100 Million VMT
2005	Alabama	1,148	373	32	0.63
	US	43,510	13,582	31	0.45
	Best State*			12	0.13
2006	Alabama	1,207	377	31	0.62
	US	42,708	13,491	32	0.45
	Best State*			18	0.20
2007	Alabama	1,110	377	34	0.61
	US	41,259	13,041	32	0.43
	Best State*			19	0.21
2008	Alabama	969	314	32	0.53
	US	37,423	11,711	31	0.39
	Best State*			16	0.16
2009	Alabama	848	280	33	0.50
	US	33,808	10,839	32	0.37
	Best State*			16	0.15

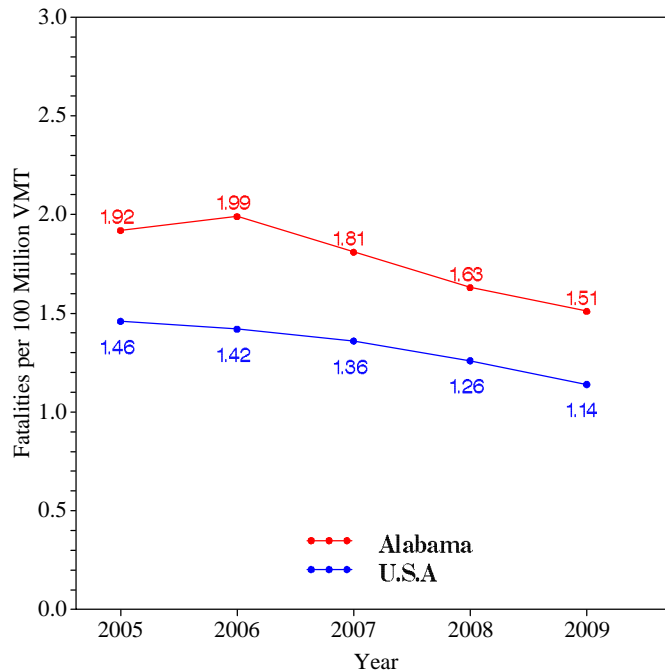
\*State (or States) With Lowest Percents: Lowest Percents Could Be in Different States

\*\*Based on the BAC of All Involved Drivers and Motorcycle Riders (Operators) Only

[Back To The Table of Contents](#)

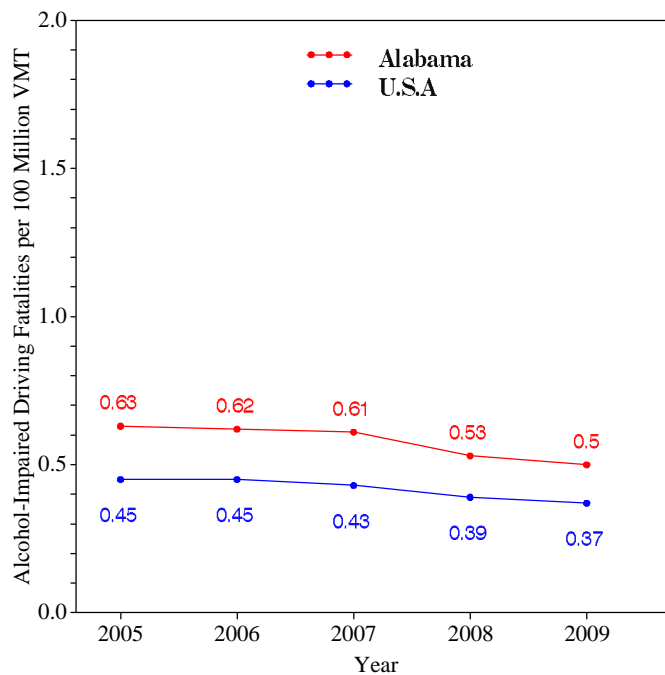


### Fatalities per 100 Million VMT



[Back To The Table of Contents](#)

### Alcohol-Impaired Driving Fatalities per 100 Million VMT



[Back To The Table of Contents](#)



**Blood Alcohol Concentration (BAC) Reporting Rates  
For Drivers/Motorcycle Riders (Operators)  
Involved in Fatal Crashes:  
Alabama , U.S. and Best State**

Year		Surviving Drivers/Motorcycle Riders			Killed Drivers/Motorcycle Riders			Total Drivers/Motorcycle Riders		
		Total	With Blood Alcohol Concentration (BAC) Results Reported to FARS		Total	With Blood Alcohol Concentration (BAC) Results Reported to FARS		Total	With Blood Alcohol Concentration (BAC) Results Reported to FARS	
			Number	Percent		Number	Percent		Number	Percent
2005	Alabama	758	118	16	795	442	56	1,553	560	36
	US	31,729	7,415	23	27,491	18,773	68	59,220	26,188	44
	Best State*			77			98			84
2006	Alabama	742	114	15	841	344	41	1,583	458	29
	US	30,498	7,482	25	27,348	18,911	69	57,846	26,393	46
	Best State*			81			99			85
2007	Alabama	695	89	13	775	460	59	1,470	549	37
	US	29,449	7,631	26	26,570	19,434	73	56,019	27,065	48
	Best State*			82			100			84
2008	Alabama	587	86	15	702	449	64	1,289	535	42
	US	26,162	7,656	29	24,254	18,415	76	50,416	26,071	52
	Best State*			81			99			85
2009	Alabama	527	74	14	610	346	57	1,137	420	37
	US	23,432	6,372	27	21,798	15,505	71	45,230	21,877	48
	Best State*			86			97			90

\*State (or States) With Highest Percents: Highest Percents Could Be in Different States

[Back To The Table of Contents](#)





Daytime Front Seat (Outboard Only) Passenger Vehicle Occupants, Aged 5 and Over, by Restraint Use: Fatalities and Observed Alabama , U.S. and Best State

Table with 4 columns: Year, State, Fatalities - Restrained\*\* (Percent), Observed - Restrained\*\*\* (Percent). Rows include years 2005-2009 and states Alabama, US, and Best State\*.

\*State With Highest Percent. Fatal Crash and Observed Percents Can Be Different States

\*\*Percent Based Only Where Restraint Use Was Known

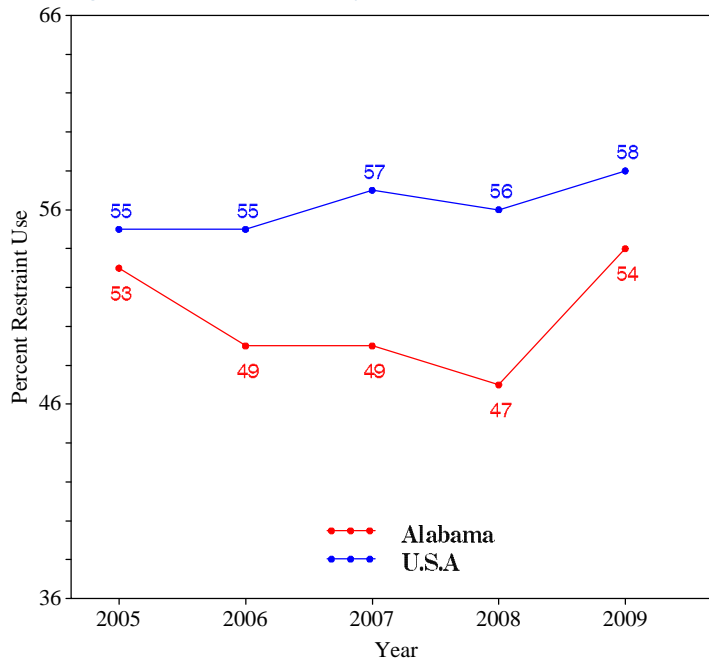
\*\*\*USA Data: National Occupant Protection Use Survey. Alabama Data: State Survey

Note: The Purpose of this Table is to Compare (as closely as possible) the Use of Restraint Systems by Fatally Injured Occupants with Occupants in all Driving Situations

Back To The Table of Contents



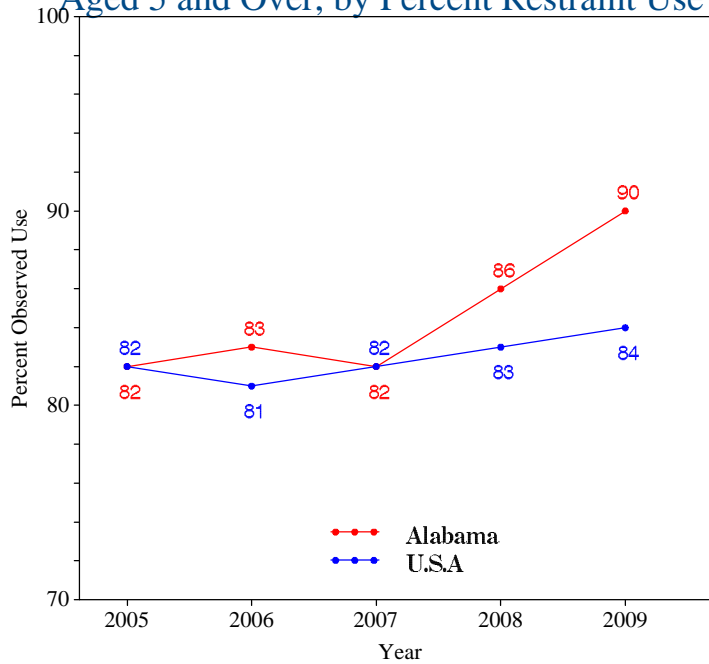
### Daytime Front Seat (Outboard Only) Passenger Vehicle Occupant Fatalities, Aged 5 and Over, by Percent Restraint Use\*



\*Percent Based Only Where Restraint Use Was Known

[Back To The Table of Contents](#)

### Daytime Front Seat (Outboard Only) Passenger Vehicle Occupants Observed, Aged 5 and Over, by Percent Restraint Use\*



\*USA Data: National Occupant Protection Use Survey. Alabama Data: State Survey

[Back To The Table of Contents](#)



### Passenger Vehicle Occupant Fatalities Age 5 and Above by Restraint Use and Lives Saved Estimates

Year	Fatalities Age 5 and Above					Lives Saved Estimates**	
	Total	Restrained	Unrestrained	Unknown Restraint Use	Percent Known Restrained*	Lives Saved at Current Belt Use	Additional Lives Savable at 100% Belt Usage
2005	949	356	552	41	39	435	173
2006	959	362	561	36	39	452	185
2007	897	331	533	33	38	400	188
2008	740	265	447	28	37	325	117
2009	646	252	375	19	40	307	82

\*Percent Based Only Where Restraint Use Was Known

\*\*Lives Saved Estimates (Sum of columns may not equal other published numbers due to rounding)

[Back To The Table of Contents](#)

### Passenger Vehicle Occupant Fatalities Age 4 and Under by Restraint Use and Lives Saved Estimates

Year	Fatalities Age 4 and Under					Lives Saved Estimates**	
	Total	Restrained	Unrestrained	Unknown Restraint Use	Percent Known Restrained*	Lives Saved at Current Seat Belt and Child Safety Seat Usage	
2005	16	8	8	0	50	11	
2006	14	7	7	0	50	10	
2007	6	3	3	0	50	5	
2008	11	6	5	0	55	8	
2009	9	7	1	1	88	9	

\*Percent Based Only Where Restraint Use Was Known

\*\*Lives Saved Estimates

[Back To The Table of Contents](#)



### Motorcyclist Fatalities by Helmet Use and Lives Saved Estimates

Year	Fatalities					Lives Saved Estimates**	
	Total	Helmeted	Unhelmeted	Unknown Helmet Use	Percent Known Helmeted*	Lives Saved at Current Helmet Use	Additional Lives Savable at 100% Helmet Usage
2005	62	59	3	0	95	35	1
2006	105	95	10	0	90	56	4
2007	85	77	8	0	91	46	3
2008	100	85	15	0	85	50	6
2009	76	69	7	0	91	41	3

\*Percent Based Only Where Helmet Use Was Known

\*\*Lives Saved Estimates (Sum of columns may not equal other published numbers due to rounding)

[Back To The Table of Contents](#)



## Fatalities by Person Type

Person Type		2005		2006		2007		2008		2009	
		#	%*	#	%*	#	%*	#	%*	#	%*
<b>Occupants</b>	<b>Passenger Car</b>	559	49	527	44	495	45	426	44	365	43
	<b>Light Truck - Pickup</b>	211	18	211	17	199	18	174	18	145	17
	<b>Light Truck - Utility</b>	153	13	191	16	173	16	119	12	125	15
	<b>Light Truck - Van</b>	43	4	44	4	37	3	32	3	26	3
	<b>Light Truck - Other</b>	0	0	0	0	1	0	0	0	0	0
	<b>Large Truck</b>	17	1	20	2	16	1	27	3	16	2
	<b>Bus</b>	0	0	5	0	2	0	1	0	0	0
	<b>Other/Unknown Occupants</b>	15	1	13	1	22	2	12	1	23	3
	<b>Total Occupants</b>	998	87	1,011	84	945	85	791	82	700	83
<b>Motorcyclists</b>	<b>Total Motorcyclists</b>	62	5	105	9	85	8	100	10	76	9
<b>Nonoccupants</b>	<b>Pedestrian</b>	73	6	78	6	69	6	68	7	64	8
	<b>Bicyclist and Other Cyclist</b>	13	1	10	1	9	1	4	0	6	1
	<b>Other/Unknown Nonoccupants</b>	2	0	3	0	2	0	6	1	2	0
		<b>Total Nonoccupants</b>	88	8	91	8	80	7	78	8	72
<b>Total</b>	<b>Total</b>	1,148	100	1,207	100	1,110	100	969	100	848	100

\*Sum of Percents May Not = 100 Due to Individual Cell Rounding

[Back To The Table of Contents](#)



### Fatalities by Crash Type

Crash Type	2005	2006	2007	2008	2009
<b>Total Fatalities (All Crashes)*</b>	1,148	1,207	1,110	969	848
<b>- (1) Single Vehicle</b>	619	686	652	595	500
<b>- (2) Involving a Large Truck</b>	122	137	134	131	80
<b>- (3) Involving Speeding</b>	502	568	497	447	327
<b>- (4) Involving a Rollover</b>	389	426	437	351	288
<b>- (5) Involving a Roadway Departure</b>	714	775	709	594	536
<b>- (6) Involving an Intersection (or Intersection Related)</b>	231	207	188	173	141

(1) Crash Involved Only One Coded Vehicle

(2) Crash Involved at Least One Large Truck

(3) Crash Involved at Least One Vehicle Speeding

(4) Crash Involved at Least One Vehicle That Rolled Over

(5) Crash Involved at Least One Vehicle That Departed the Roadway (FHWA Definition)

(6) Crash Occured Within an Intersection or Within the Approach to an Intersection

\*A Fatality Can Be in More Than One Category. Therefore Sum of the Individual Cells Will Not Equal the Total Due to Double Counting

[Back To The Table of Contents](#)



### Motorcyclist Fatalities by Age

Year	Age							Total
	<20	20-29	30-39	40-49	50-59	>59	Unknown	
2005	4	12	13	19	10	4	0	62
2006	7	27	29	21	18	3	0	105
2007	8	26	19	18	10	4	0	85
2008	4	31	25	19	13	8	0	100
2009	7	9	21	18	11	9	1	76

[Back To The Table of Contents](#)

### Motorcyclist Fatalities Per 100,000 Registered Motorcycles

Year	Motorcyclist Fatalities	Total Motorcycle Registrations*	Motorcyclist Fatalities Per 100,000 Motorcycle Registrations
2005	62	93,468	66.33
2006	105	104,075	100.9
2007	85	110,858	76.67
2008	100	127,166	78.64
2009	76	122,471	62.06

\*Data Source: FHWA

[Back To The Table of Contents](#)



### Fatalities by Person Type and Race/Hispanic Origin

Person Type by Race/Hispanic Origin		2005	2006	2007	2008
<b>Occupants (All Vehicle Types)</b>	<b>Hispanic</b>	37	51	50	38
	<b>White Non-Hispanic</b>	681	799	748	637
	<b>Black, Non-Hispanic</b>	251	246	215	200
	<b>American Indian, Non-Hispanic/Unknown</b>	1	2	0	7
	<b>Asian, Non-Hispanic/Unknown</b>	5	5	5	2
	<b>All Other Non-Hispanic or Race</b>	5	2	4	4
	<b>Unknown Race and Unknown Hispanic</b>	80	11	8	3
	<b>Total</b>	1,060	1,116	1,030	891
<b>Non-Occupants (Pedestrians, Pedalcyclists and Other/Unknown NonOccupants)</b>					
	<b>Hispanic</b>	2	5	3	4
	<b>White Non-Hispanic</b>	56	51	40	43
	<b>Black, Non-Hispanic</b>	26	32	36	31
	<b>American Indian, Non-Hispanic/Unknown</b>	0	0	0	0
	<b>Asian, Non-Hispanic/Unknown</b>	1	1	1	0
	<b>All Other Non-Hispanic or Race</b>	0	2	0	0
	<b>Unknown Race and Unknown Hispanic</b>	3	0	0	0
<b>Total</b>	88	91	80	78	
<b>Total</b>	1,148	1,207	1,110	969	

2009 Race/Hispanic Origin Data is Not Yet Complete

[Back To The Table of Contents](#)





### 5 Year Trend For The Top 10 Counties of 2009 - Fatalities

Counties by 2009 Ranking		Fatalities					Percent of Total				
		2005	2006	2007	2008	2009	2005	2006	2007	2008	2009
1	Jefferson County	71	80	98	104	83	6	7	9	11	10
2	Mobile County	95	100	105	81	58	8	8	9	8	7
3	Madison County	69	75	34	46	41	6	6	3	5	5
4	Tuscaloosa County	36	44	45	34	36	3	4	4	4	4
5	Baldwin County	47	45	35	31	28	4	4	3	3	3
6	Talladega County	31	24	18	17	26	3	2	2	2	3
7	Marshall County	19	13	13	26	25	2	1	1	3	3
8	Calhoun County	22	22	23	23	24	2	2	2	2	3
9	Lee County	26	23	21	26	22	2	2	2	3	3
10	Montgomery County	48	45	43	43	22	4	4	4	4	3
<b>Sub Total 1.*</b>	<b>Top Ten Counties</b>	482	515	487	439	365	42	43	44	45	43
<b>Sub Total 2.**</b>	<b>All Other Counties</b>	665	692	623	530	483	58	57	56	55	57
<b>Total</b>	<b>All Counties</b>	1,147	1,207	1,110	969	848	100	100	100	100	100

\*This Sub Total is the Total for the Top Ten Counties

\*\*This Sub Total is the Total for all Counties Outside the Top Ten

[Back To The Table of Contents](#)



### 5 Year Trend For The Top 10 Counties of 2009 - Fatalities Year to Year Percent Change

Counties by 2009 Ranking		Fatalities					Percent Change From Previous Year			
		2005	2006	2007	2008	2009	2006	2007	2008	2009
1	Jefferson County	71	80	98	104	83	13	23	6	-20
2	Mobile County	95	100	105	81	58	5	5	-23	-28
3	Madison County	69	75	34	46	41	9	-55	35	-11
4	Tuscaloosa County	36	44	45	34	36	22	2	-24	6
5	Baldwin County	47	45	35	31	28	-4	-22	-11	-10
6	Talladega County	31	24	18	17	26	-23	-25	-6	53
7	Marshall County	19	13	13	26	25	-32	0	100	-4
8	Calhoun County	22	22	23	23	24	0	5	0	4
9	Lee County	26	23	21	26	22	-12	-9	24	-15
10	Montgomery County	48	45	43	43	22	-6	-4	0	-49
<b>Sub Total 1.*</b>	<b>Top Ten Counties</b>	482	515	487	439	365	7	-5	-10	-17
<b>Sub Total 2.**</b>	<b>All Other Counties</b>	665	692	623	530	483	4	-10	-15	-9
<b>Total</b>	<b>All Counties</b>	1,147	1,207	1,110	969	848	5	-8	-13	-12

\*This Sub Total is the Total for the Top Ten Counties

\*\*This Sub Total is the Total for all Counties Outside the Top Ten

[Back To The Table of Contents](#)



## 5 Year Trend For The Top 10 Counties of 2009 - Fatality Rates

Median Rate for all U.S. Counties: 18.23

Counties by 2009 Ranking		Fatalities Per 100,000 Population				
		2005	2006	2007	2008	2009
1	<b>Perry County</b>	64.89	37.90	18.65	18.60	56.48
2	<b>Choctaw County</b>	48.25	48.65	28.21	56.81	50.04
3	<b>Cleburne County</b>	98.07	48.50	88.48	40.72	47.43
4	<b>Pike County</b>	37.06	40.03	36.44	29.63	45.96
5	<b>Greene County</b>	126.69	76.76	87.91	99.57	45.31
6	<b>Lowndes County</b>	46.52	118.01	78.96	71.47	40.67
7	<b>Monroe County</b>	34.53	21.75	39.54	44.15	40.20
8	<b>Bullock County</b>	72.89	46.56	91.19	27.47	36.41
9	<b>Lawrence County</b>	26.24	41.33	29.28	35.25	35.18
10	<b>Chilton County</b>	48.18	47.82	59.02	28.11	34.91
	<b>Sub Rate 1.* Top Ten Counties</b>	75.65	67.65	69.02	52.48	41.21
	<b>Sub Rate 2.** All Other Counties</b>	23.32	24.58	22.15	19.31	16.97
	<b>Total Rate All Counties</b>	25.24	26.25	23.93	20.72	18.01

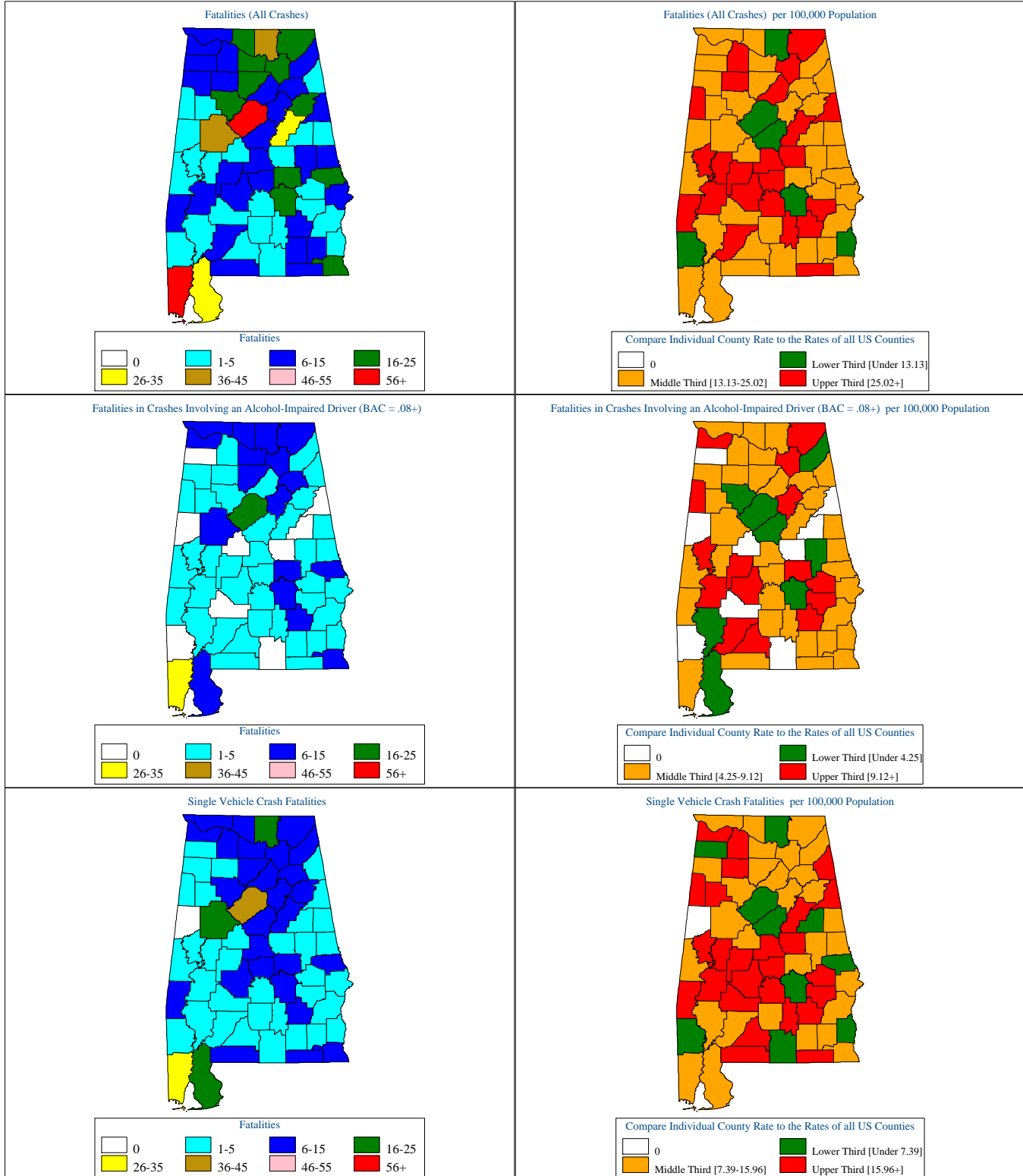
\*This Sub Rate is the Rate for the Top Ten Counties

\*\*This Sub Rate is the Rate for all Counties Outside the Top Ten

[Back To The Table of Contents](#)



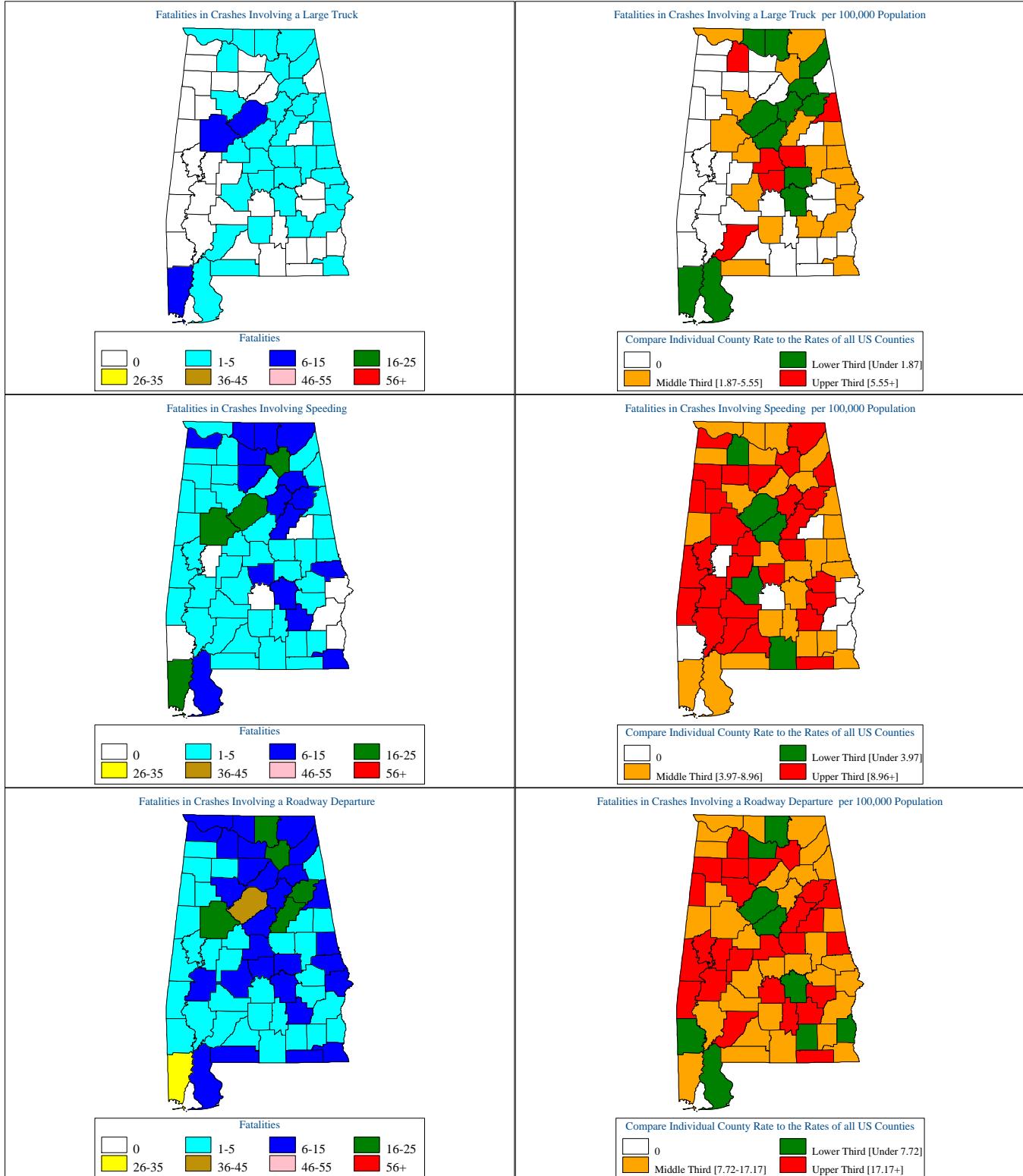
### Alabama Motor Vehicle Crash Fatality Maps for 2009



[Back To The Table of Contents](#)



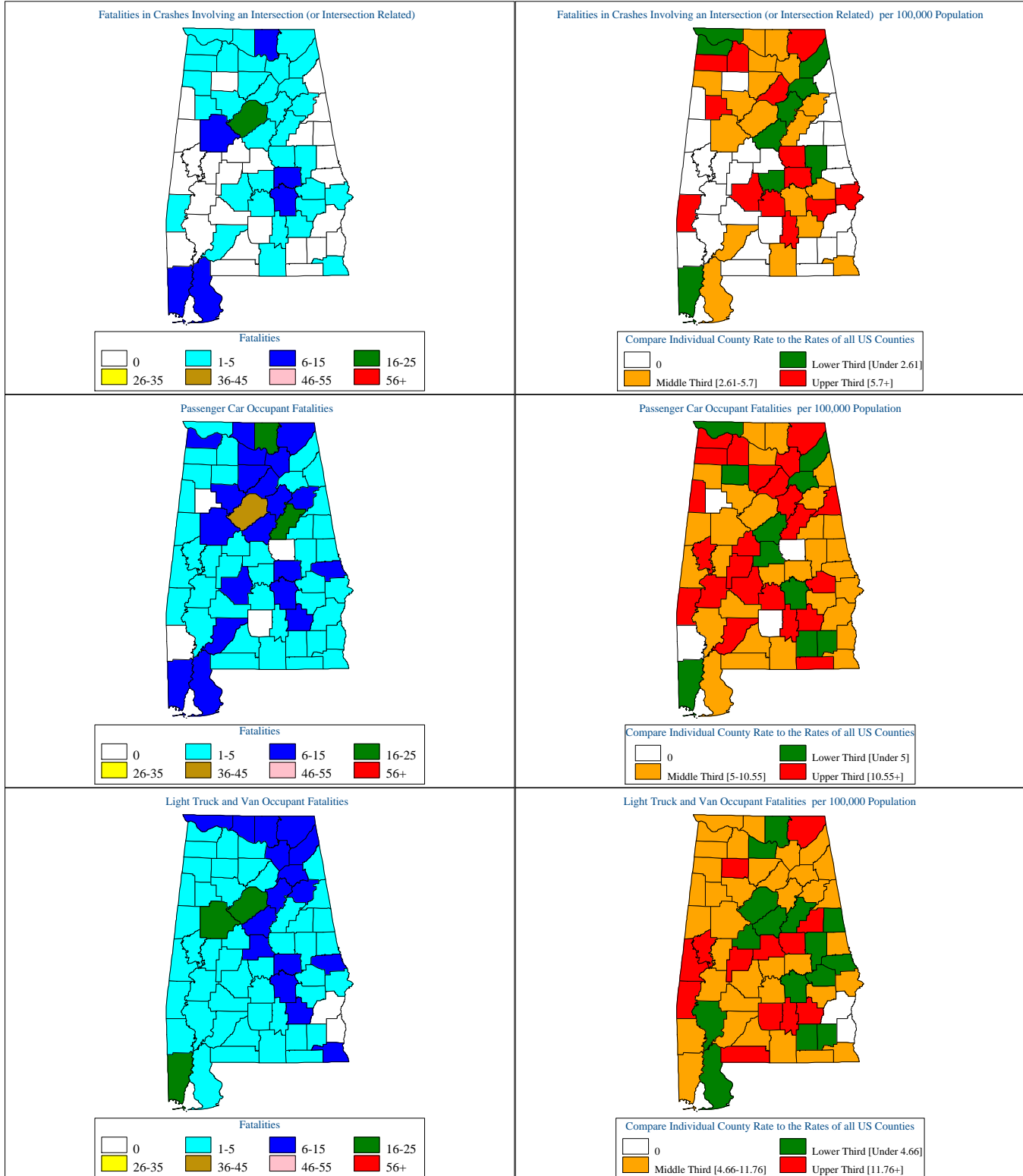
### Alabama Motor Vehicle Crash Fatality Maps for 2009



[Back To The Table of Contents](#)



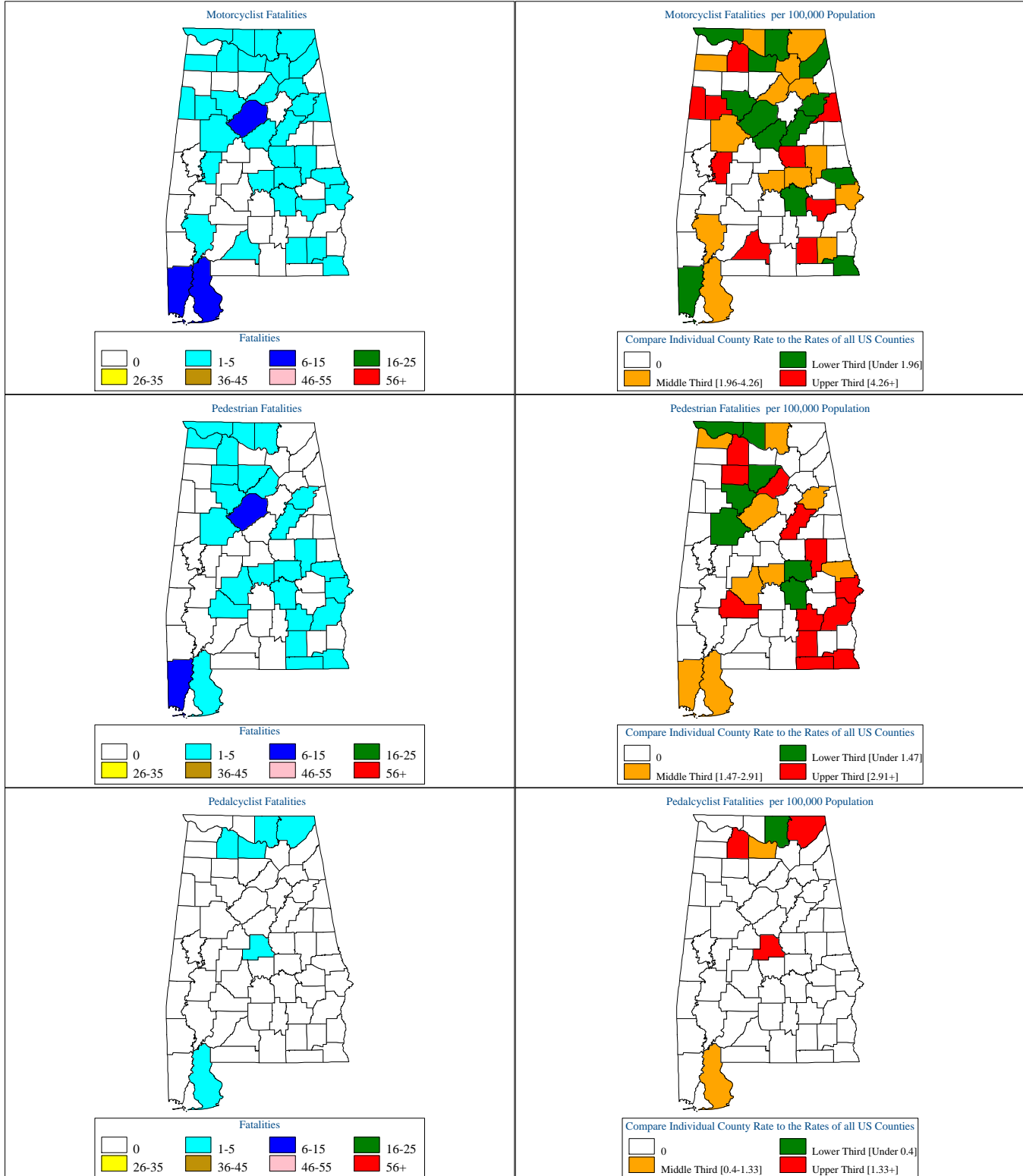
### Alabama Motor Vehicle Crash Fatality Maps for 2009



[Back To The Table of Contents](#)



### Alabama Motor Vehicle Crash Fatality Maps for 2009



[Back To The Table of Contents](#)