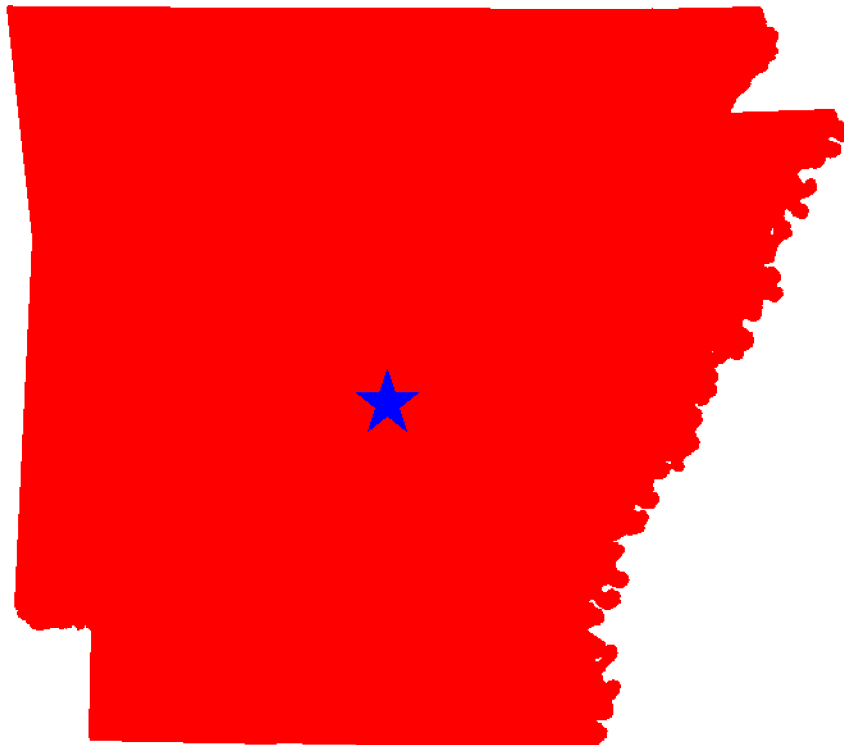




## Traffic Safety Facts Arkansas 2005-2009



This Report Contains Data From the Following Sources:

- Fatality Data - NCSA Fatality Analysis Reporting System (FARS): 2005-2008 Final File and 2009 Annual Report File (ARF)
- Observed Safety Belt Data - NCSA National Occupant Protection Use Survey (NOPUS) and the Arkansas State Survey
- Vehicle Miles of Travel Data and Motorcycle Registrations - Federal Highway Administration (FHWA)
- Population Data - U.S. Bureau of the Census



## Table of Contents (Listed by Table Title and Page Number)

3. Traffic Safety Performance Measures
4. Fatality Rates: Arkansas , U.S. and Best State
5. Alcohol-Related Fatalities: Arkansas , U.S. and Best State (Old Definition)
6. Alcohol-Impaired Driving Fatalities: Arkansas , U.S. and Best State (New Definition)
7. Fatalities Per 100 Million VMT: Arkansas , U.S.
7. Alcohol-Impaired Driving Fatalities Per 100 Million VMT: Arkansas , U.S.
8. Blood Alcohol Concentration (BAC) Reporting Rates For Drivers/Motorcycle Rider (Operators) Involved in Fatal Crashes: Arkansas , U.S. and Best State
9. Front Seat Passenger Vehicle Occupants, Aged 5 and Over, by Restraint Use: Fatalities and Observed Arkansas , U.S. and Best State
10. Front Seat Passenger Vehicle Occupant Fatalities, Aged 5 and Over, by Percent Restraint Use: Arkansas , U.S.
10. Front Seat Passenger Vehicle Occupants Observed, Aged 5 and Over, by Percent Restraint Use: Arkansas , U.S.
11. Passenger Vehicle Occupant Fatalities Aged 5 and Above by Restraint Use and Lives Saved Estimates
11. Passenger Vehicle Occupant Fatalities Aged Under 5 by Restraint Use and Lives Saved Estimates
12. Motorcyclist Fatalities by Helmet Use and Lives Saved Estimates
13. Fatalities by Person Type
14. Fatalities by Crash Type
15. Motorcyclist Fatalities by Age
15. Motorcyclist Fatalities Per 100,000 Registered Motorcycles
16. Fatalities by Person Type and Race/Hispanic Origin
17. Top 10 Counties for Fatalities
18. Top 10 Counties for Fatalities: Year to Year Percent Change
19. Top 10 Counties for Fatality Rates
20. Motor Vehicle Crash Fatality Maps:  
Total Fatalities, Alcohol-Impaired Driving Fatalities, Single Vehicle Crash Fatalities
21. Motor Vehicle Crash Fatality Maps:  
Large Truck Crash Fatalities, Speeding Involved Fatalities, Roadway Departure Fatalities
22. Motor Vehicle Crash Fatality Maps:  
Intersection Fatalities, Passenger Car Occupants, Light Truck and Van Occupants
23. Motor Vehicle Crash Fatality Maps:  
Motorcyclist Fatalities, Pedestrian Fatalities, Pedestrian Fatalities



Traffic Safety Performance (Core Outcome) Measures\* For Arkansas

Core Outcome Measures		Year				
		2005	2006	2007	2008	2009
Traffic Fatalities	Total	654	665	649	600	585
	Rural	530	504	496	443	464
	Urban	124	161	153	157	121
	Unknown	0	0	0	0	0
Fatalities Per 100 Million Vehicle Miles Driven	Total	2.05	2.01	1.96	1.81	1.76
	Rural	2.64	2.49	2.47	2.25	2.48
	Urban	1.04	1.26	1.17	1.17	0.83
Passenger Vehicle Occupant Fatalities (All Seat Positions)	Total	516	510	481	446	447
	Restrained	149	134	159	142	157
	Unrestrained	312	303	274	266	247
	Unknown	55	73	48	38	43
Alcohol-Impaired Driving Fatalities (BAC=.08+)**		180	200	181	170	168
Speeding-Related Fatalities		106	96	64	63	105
Motorcyclist Fatalities	Total	63	76	80	68	70
	Helmeted	29	18	29	27	28
	Unhelmeted	30	56	48	37	34
	Unknown	4	2	3	4	8
Drivers Involved in Fatal Crashes	Total	891	885	857	778	770
	Aged Under 15	0	5	2	1	5
	Aged 15-20	115	122	118	102	84
	Aged Under 21	115	127	120	103	89
	Aged 21 and Over	770	754	730	664	679
	Unknown Age	6	4	7	11	2
Pedestrian Fatalities		37	31	45	45	36

\*These Performance Measures Were Developed By The National Highway Traffic Safety Administration (NHTSA) and the Governors Highway Safety Association (GHSA) (See Publication: DOT HS 811 025)

\*\*Based on the BAC of All Involved Drivers and Motorcycle Riders (Operators) Only

[Back To The Table of Contents](#)



### Fatality Rates: Arkansas , U.S. and Best State

Year		Fatalities	Total Vehicle Miles Traveled (Millions)	Fatalities Per 100 Million Vehicle Miles Traveled	Total Population	Fatalities Per 100,000 Population
2005	Arkansas	654	31,972	2.05	2,776,221	23.56
	US	43,510	2,989,430	1.46	295,753,151	14.71
	Best State*			0.80		6.83
2006	Arkansas	665	33,007	2.01	2,815,097	23.62
	US	42,708	3,014,371	1.42	298,593,212	14.30
	Best State*			0.78		6.34
2007	Arkansas	649	33,171	1.96	2,842,194	22.83
	US	41,259	3,031,124	1.36	301,579,895	13.68
	Best State*			0.79		6.54
2008	Arkansas	600	33,163	1.81	2,867,764	20.92
	US	37,423	2,976,528	1.26	304,374,846	12.30
	Best State*			0.67		5.56
2009	Arkansas	585	33,219	1.76	2,889,450	20.25
	US	33,808	2,953,501	1.14	307,006,550	11.01
	Best State*			0.61		4.84

\*State (or States) With Lowest Rates: Lowest VMT and Population Rates Could Be in Different States

[Back To The Table of Contents](#)



**Fatalities By The Highest Blood Alcohol Concentration (BAC) in the Crash\*\*:**  
**Arkansas , U.S. and Best State**  
**(Old Definition)**

Year		Total Fatalities in all Crashes	Highest BAC level in the Crash					
			BAC = .01+			BAC = .08+		
			Number	Percent	Per 100 Million VMT	Number	Percent	Per 100 Million VMT
2005	Arkansas	654	218	33	0.68	190	29	0.59
	US	43,510	17,590	40	0.59	15,102	35	0.51
	Best State*			14	0.16		12	0.14
2006	Arkansas	665	254	38	0.77	205	31	0.62
	US	42,708	17,738	42	0.59	15,144	35	0.50
	Best State*			24	0.26		20	0.22
2007	Arkansas	649	240	37	0.72	195	30	0.59
	US	41,259	17,158	42	0.57	14,603	35	0.48
	Best State*			24	0.27		21	0.23
2008	Arkansas	600	224	37	0.68	190	32	0.57
	US	37,423	15,449	41	0.52	13,258	35	0.45
	Best State*			21	0.21		16	0.16
2009	Arkansas	585	226	39	0.68	181	31	0.54
	US	33,808	14,188	42	0.48	12,233	36	0.41
	Best State*			23	0.22		18	0.16

\*State (or States) With Lowest Percents: Lowest Percents Could Be in Different States

\*\*Based on the BAC of All Involved Drivers, Motorcycle Riders (Operators), Pedalcyclists and Pedestrians

[Back To The Table of Contents](#)



Alcohol-Impaired Driving Fatalities\*\*:  
Arkansas , U.S. and Best State  
(New Definition)

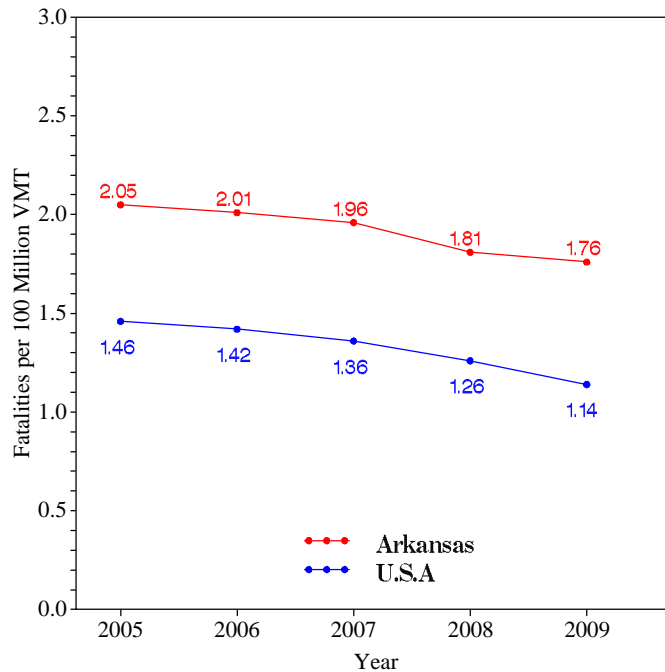
Year		Total Fatalities in all Crashes	Alcohol-Impaired Driving Fatalities (BAC = .08+)		
			Number	Percent	Per 100 Million VMT
2005	Arkansas	654	180	28	0.56
	US	43,510	13,582	31	0.45
	Best State*			12	0.13
2006	Arkansas	665	200	30	0.61
	US	42,708	13,491	32	0.45
	Best State*			18	0.20
2007	Arkansas	649	181	28	0.55
	US	41,259	13,041	32	0.43
	Best State*			19	0.21
2008	Arkansas	600	170	28	0.51
	US	37,423	11,711	31	0.39
	Best State*			16	0.16
2009	Arkansas	585	168	29	0.51
	US	33,808	10,839	32	0.37
	Best State*			16	0.15

\*State (or States) With Lowest Percents: Lowest Percents Could Be in Different States  
\*\*Based on the BAC of All Involved Drivers and Motorcycle Riders (Operators) Only

[Back To The Table of Contents](#)

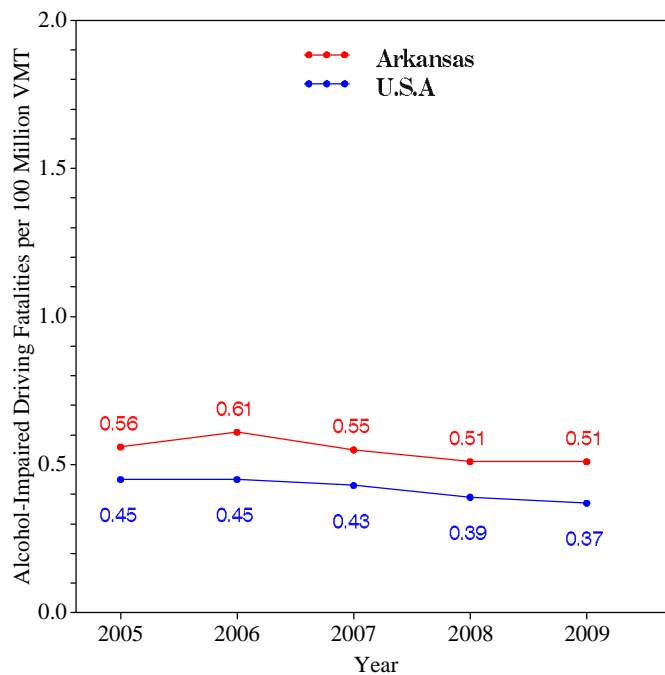


### Fatalities per 100 Million VMT



[Back To The Table of Contents](#)

### Alcohol-Impaired Driving Fatalities per 100 Million VMT



[Back To The Table of Contents](#)



**Blood Alcohol Concentration (BAC) Reporting Rates  
For Drivers/Motorcycle Riders (Operators)  
Involved in Fatal Crashes:  
Arkansas , U.S. and Best State**

Year		Surviving Drivers/Motorcycle Riders			Killed Drivers/Motorcycle Riders			Total Drivers/Motorcycle Riders		
		Total	With Blood Alcohol Concentration (BAC) Results Reported to FARS		Total	With Blood Alcohol Concentration (BAC) Results Reported to FARS		Total	With Blood Alcohol Concentration (BAC) Results Reported to FARS	
			Number	Percent		Number	Percent		Number	Percent
2005	Arkansas	410	205	50	481	366	76	891	571	64
	US	31,729	7,415	23	27,491	18,773	68	59,220	26,188	44
	Best State*			77			98			84
2006	Arkansas	406	204	50	479	384	80	885	588	66
	US	30,498	7,482	25	27,348	18,911	69	57,846	26,393	46
	Best State*			81			99			85
2007	Arkansas	395	233	59	462	358	77	857	591	69
	US	29,449	7,631	26	26,570	19,434	73	56,019	27,065	48
	Best State*			82			100			84
2008	Arkansas	347	221	64	431	348	81	778	569	73
	US	26,162	7,656	29	24,254	18,415	76	50,416	26,071	52
	Best State*			81			99			85
2009	Arkansas	345	225	65	425	353	83	770	578	75
	US	23,432	6,372	27	21,798	15,505	71	45,230	21,877	48
	Best State*			86			97			90

\*State (or States) With Highest Percents: Highest Percents Could Be in Different States

[Back To The Table of Contents](#)





Daytime Front Seat (Outboard Only) Passenger Vehicle Occupants, Aged 5 and Over, by Restraint Use: Fatalities and Observed Arkansas , U.S. and Best State

Table with 4 columns: Year, State, Fatalities - Restrained\*\* (Percent), Observed - Restrained\*\*\* (Percent). Rows include years 2005-2009 and states Arkansas, US, and Best State\*.

\*State With Highest Percent. Fatal Crash and Observed Percents Can Be Different States

\*\*Percent Based Only Where Restraint Use Was Known

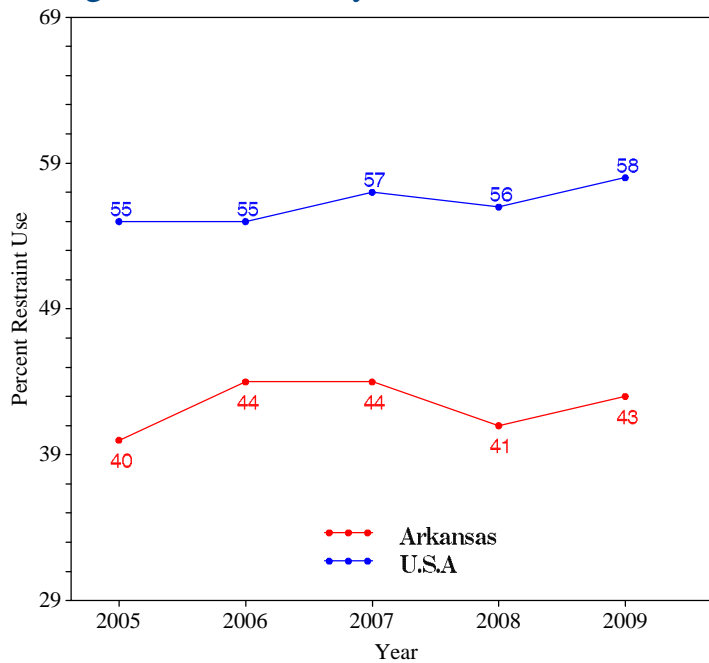
\*\*\*USA Data: National Occupant Protection Use Survey. Arkansas Data: State Survey

Note: The Purpose of this Table is to Compare (as closely as possible) the Use of Restraint Systems by Fatally Injured Occupants with Occupants in all Driving Situations

Back To The Table of Contents



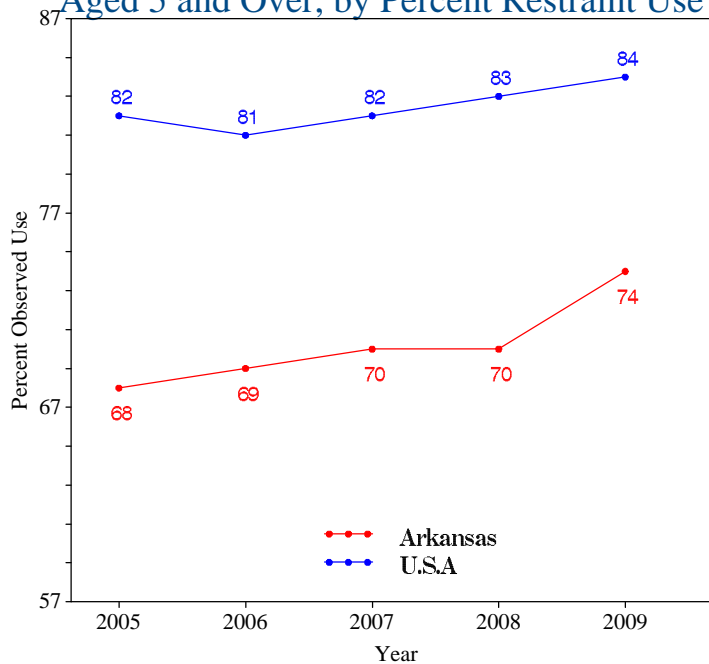
### Daytime Front Seat (Outboard Only) Passenger Vehicle Occupant Fatalities, Aged 5 and Over, by Percent Restraint Use\*



\*Percent Based Only Where Restraint Use Was Known

[Back To The Table of Contents](#)

### Daytime Front Seat (Outboard Only) Passenger Vehicle Occupants Observed, Aged 5 and Over, by Percent Restraint Use\*



\*USA Data: National Occupant Protection Use Survey. Arkansas Data: State Survey

[Back To The Table of Contents](#)



### Passenger Vehicle Occupant Fatalities Age 5 and Above by Restraint Use and Lives Saved Estimates

Year	Fatalities Age 5 and Above					Lives Saved Estimates**	
	Total	Restrained	Unrestrained	Unknown Restraint Use	Percent Known Restrained*	Lives Saved at Current Belt Use	Additional Lives Savable at 100% Belt Usage
2005	511	147	309	55	32	198	142
2006	495	126	297	72	30	174	138
2007	475	154	273	48	36	219	150
2008	440	139	263	38	35	176	126
2009	440	153	244	43	39	212	125

\*Percent Based Only Where Restraint Use Was Known

\*\*Lives Saved Estimates (Sum of columns may not equal other published numbers due to rounding)

[Back To The Table of Contents](#)

### Passenger Vehicle Occupant Fatalities Age 4 and Under by Restraint Use and Lives Saved Estimates

Year	Fatalities Age 4 and Under					Lives Saved Estimates**	
	Total	Restrained	Unrestrained	Unknown Restraint Use	Percent Known Restrained*	Lives Saved at Current Seat Belt and Child Safety Seat Usage	
2005	5	2	3	0	40	2	
2006	15	8	6	1	57	14	
2007	5	5	0	0	100	8	
2008	6	3	3	0	50	4	
2009	6	3	3	0	50	3	

\*Percent Based Only Where Restraint Use Was Known

\*\*Lives Saved Estimates

[Back To The Table of Contents](#)



### Motorcyclist Fatalities by Helmet Use and Lives Saved Estimates

Year	Fatalities					Lives Saved Estimates**	
	Total	Helmeted	Unhelmeted	Unknown Helmet Use	Percent Known Helmeted*	Lives Saved at Current Helmet Use	Additional Lives Savable at 100% Helmet Usage
2005	63	29	30	4	49	18	12
2006	76	18	56	2	24	11	22
2007	80	29	48	3	38	18	19
2008	68	27	37	4	42	17	15
2009	70	28	34	8	45	18	14

\*Percent Based Only Where Helmet Use Was Known

\*\*Lives Saved Estimates (Sum of columns may not equal other published numbers due to rounding)

[Back To The Table of Contents](#)



## Fatalities by Person Type

Person Type		2005		2006		2007		2008		2009	
		#	%*	#	%*	#	%*	#	%*	#	%*
<b>Occupants</b>	<b>Passenger Car</b>	261	40	256	38	244	38	221	37	210	36
	<b>Light Truck - Pickup</b>	148	23	130	20	131	20	128	21	124	21
	<b>Light Truck - Utility</b>	73	11	96	14	84	13	76	13	89	15
	<b>Light Truck - Van</b>	34	5	28	4	22	3	21	4	24	4
	<b>Large Truck</b>	26	4	25	4	27	4	19	3	13	2
	<b>Bus</b>	0	0	0	0	3	0	0	0	0	0
	<b>Other/Unknown Occupants</b>	8	1	16	2	9	1	16	3	11	2
	<b><i>Total Occupants</i></b>	<b>550</b>	<b>84</b>	<b>551</b>	<b>83</b>	<b>520</b>	<b>80</b>	<b>481</b>	<b>80</b>	<b>471</b>	<b>81</b>
<b>Motorcyclists</b>	<b><i>Total Motorcyclists</i></b>	<b>63</b>	<b>10</b>	<b>76</b>	<b>11</b>	<b>80</b>	<b>12</b>	<b>68</b>	<b>11</b>	<b>70</b>	<b>12</b>
<b>Nonoccupants</b>	<b>Pedestrian</b>	37	6	31	5	45	7	45	8	36	6
	<b>Bicyclist and Other Cyclist</b>	3	0	3	0	3	0	5	1	5	1
	<b>Other/Unknown Nonoccupants</b>	1	0	4	1	1	0	1	0	3	1
	<b><i>Total Nonoccupants</i></b>	<b>41</b>	<b>6</b>	<b>38</b>	<b>6</b>	<b>49</b>	<b>8</b>	<b>51</b>	<b>9</b>	<b>44</b>	<b>8</b>
<b>Total</b>	<b><i>Total</i></b>	<b>654</b>	<b>100</b>	<b>665</b>	<b>100</b>	<b>649</b>	<b>100</b>	<b>600</b>	<b>100</b>	<b>585</b>	<b>100</b>

\*Sum of Percents May Not = 100 Due to Individual Cell Rounding

[Back To The Table of Contents](#)



### Fatalities by Crash Type

Crash Type	2005	2006	2007	2008	2009
<b>Total Fatalities (All Crashes)*</b>	654	665	649	600	585
<b>- (1) Single Vehicle</b>	352	394	362	368	334
<b>- (2) Involving a Large Truck</b>	115	91	114	76	78
<b>- (3) Involving Speeding</b>	106	96	64	63	105
<b>- (4) Involving a Rollover</b>	234	261	203	224	203
<b>- (5) Involving a Roadway Departure</b>	388	451	422	402	390
<b>- (6) Involving an Intersection (or Intersection Related)</b>	124	99	106	88	98

(1) Crash Involved Only One Coded Vehicle

(2) Crash Involved at Least One Large Truck

(3) Crash Involved at Least One Vehicle Speeding

(4) Crash Involved at Least One Vehicle That Rolled Over

(5) Crash Involved at Least One Vehicle That Departed the Roadway (FHWA Definition)

(6) Crash Occured Within an Intersection or Within the Approach to an Intersection

\*A Fatality Can Be in More Than One Category. Therefore Sum of the Individual Cells Will Not Equal the Total Due to Double Counting

[Back To The Table of Contents](#)



### Motorcyclist Fatalities by Age

Year	Age						Total
	<20	20-29	30-39	40-49	50-59	>59	
2005	5	8	12	14	13	11	63
2006	4	20	16	14	14	8	76
2007	6	15	16	14	20	9	80
2008	6	13	13	21	8	7	68
2009	3	8	12	13	20	14	70

[Back To The Table of Contents](#)

### Motorcyclist Fatalities Per 100,000 Registered Motorcycles

Year	Motorcyclist Fatalities	Total Motorcycle Registrations*	Motorcyclist Fatalities Per 100,000 Motorcycle Registrations
2005	63	50,100	125.7
2006	76	58,694	129.5
2007	80	64,154	124.7
2008	68	71,145	95.58
2009	70	76,067	92.02

\*Data Source: FHWA

[Back To The Table of Contents](#)



### Fatalities by Person Type and Race/Hispanic Origin

Person Type by Race/Hispanic Origin		2005	2006	2007	2008
Occupants (All Vehicle Types)	Hispanic	25	34	30	26
	White Non-Hispanic	501	498	484	455
	Black, Non-Hispanic	81	89	82	60
	American Indian, Non-Hispanic/Unknown	1	0	1	4
	Asian, Non-Hispanic/Unknown	1	0	3	1
	Pacific Islander, Non-Hispanic/Unknown	2	0	0	0
	All Other Non-Hispanic or Race	2	6	0	3
	Unknown Race and Unknown Hispanic	0	0	0	0
	<b>Total</b>	613	627	600	549
Non-Occupants (Pedestrians, Pedalcyclists and Other/Unknown NonOccupants)					
	Hispanic	2	3	0	0
	White Non-Hispanic	26	28	36	38
	Black, Non-Hispanic	12	7	12	13
	American Indian, Non-Hispanic/Unknown	0	0	0	0
	Asian, Non-Hispanic/Unknown	0	0	0	0
	Pacific Islander, Non-Hispanic/Unknown	0	0	0	0
	All Other Non-Hispanic or Race	1	0	0	0
	Unknown Race and Unknown Hispanic	0	0	1	0
<b>Total</b>	41	38	49	51	
<b>Total</b>	654	665	649	600	

2009 Race/Hispanic Origin Data is Not Yet Complete

[Back To The Table of Contents](#)





### 5 Year Trend For The Top 10 Counties of 2009 - Fatalities

Counties by 2009 Ranking		Fatalities					Percent of Total				
		2005	2006	2007	2008	2009	2005	2006	2007	2008	2009
1	<b>Pulaski County</b>	53	66	64	67	56	8	10	10	11	10
2	<b>Washington County</b>	19	28	20	17	26	3	4	3	3	4
3	<b>Craighead County</b>	13	24	18	17	25	2	4	3	3	4
4	<b>Benton County</b>	27	36	35	25	22	4	5	5	4	4
5	<b>Saline County</b>	17	12	9	14	19	3	2	1	2	3
6	<b>Jefferson County</b>	9	12	22	17	17	1	2	3	3	3
7	<b>Sebastian County</b>	9	16	18	19	16	1	2	3	3	3
8	<b>White County</b>	16	20	23	15	16	2	3	4	3	3
9	<b>Independence County</b>	7	13	14	9	15	1	2	2	2	3
10	<b>Miller County</b>	16	12	10	9	14	2	2	2	2	2
<b>Sub Total 1.*</b>	<b>Top Ten Counties</b>	233	266	266	229	226	36	40	41	38	39
<b>Sub Total 2.**</b>	<b>All Other Counties</b>	421	399	383	371	359	64	60	59	62	61
<b>Total</b>	<b>All Counties</b>	654	665	649	600	585	100	100	100	100	100

\*This Sub Total is the Total for the Top Ten Counties

\*\*This Sub Total is the Total for all Counties Outside the Top Ten

[Back To The Table of Contents](#)



### 5 Year Trend For The Top 10 Counties of 2009 - Fatalities Year to Year Percent Change

Counties by 2009 Ranking		Fatalities					Percent Change From Previous Year			
		2005	2006	2007	2008	2009	2006	2007	2008	2009
1	Pulaski County	53	66	64	67	56	25	-3	5	-16
2	Washington County	19	28	20	17	26	47	-29	-15	53
3	Craighead County	13	24	18	17	25	85	-25	-6	47
4	Benton County	27	36	35	25	22	33	-3	-29	-12
5	Saline County	17	12	9	14	19	-29	-25	56	36
6	Jefferson County	9	12	22	17	17	33	83	-23	0
7	Sebastian County	9	16	18	19	16	78	13	6	-16
8	White County	16	20	23	15	16	25	15	-35	7
9	Independence County	7	13	14	9	15	86	8	-36	67
10	Miller County	16	12	10	9	14	-25	-17	-10	56
<b>Sub Total 1.*</b> <i>Top Ten Counties</i>		233	266	266	229	226	14	0	-14	-1
<b>Sub Total 2.**</b> <i>All Other Counties</i>		421	399	383	371	359	-5	-4	-3	-3
<b>Total</b> <i>All Counties</i>		654	665	649	600	585	2	-2	-8	-3

\*This Sub Total is the Total for the Top Ten Counties

\*\*This Sub Total is the Total for all Counties Outside the Top Ten

[Back To The Table of Contents](#)



## 5 Year Trend For The Top 10 Counties of 2009 - Fatality Rates

Median Rate for all U.S. Counties: 18.23

Counties by 2009 Ranking		Fatalities Per 100,000 Population				
		2005	2006	2007	2008	2009
1	Calhoun County	0.00	90.48	54.81	18.78	76.98
2	Madison County	80.86	32.66	38.62	25.27	69.29
3	Lafayette County	25.21	38.69	12.96	13.04	66.63
4	Lawrence County	64.63	41.63	35.57	29.45	65.16
5	Monroe County	77.03	33.91	58.36	47.88	61.19
6	Fulton County	59.69	25.77	76.32	42.55	60.42
7	Prairie County	67.02	22.53	79.42	92.41	58.26
8	Perry County	48.72	87.92	57.90	29.13	58.18
9	Woodruff County	0.00	25.40	26.11	53.53	54.36
10	Lincoln County	49.68	7.23	21.91	29.43	51.65
<b>Sub Rate 1.*</b> <i>Top Ten Counties</i>		66.21	58.12	64.00	53.55	61.89
<b>Sub Rate 2.**</b> <i>All Other Counties</i>		21.10	21.73	20.99	19.34	18.68
<b>Total Rate</b> <i>All Counties</i>		23.56	23.62	22.83	20.92	20.25

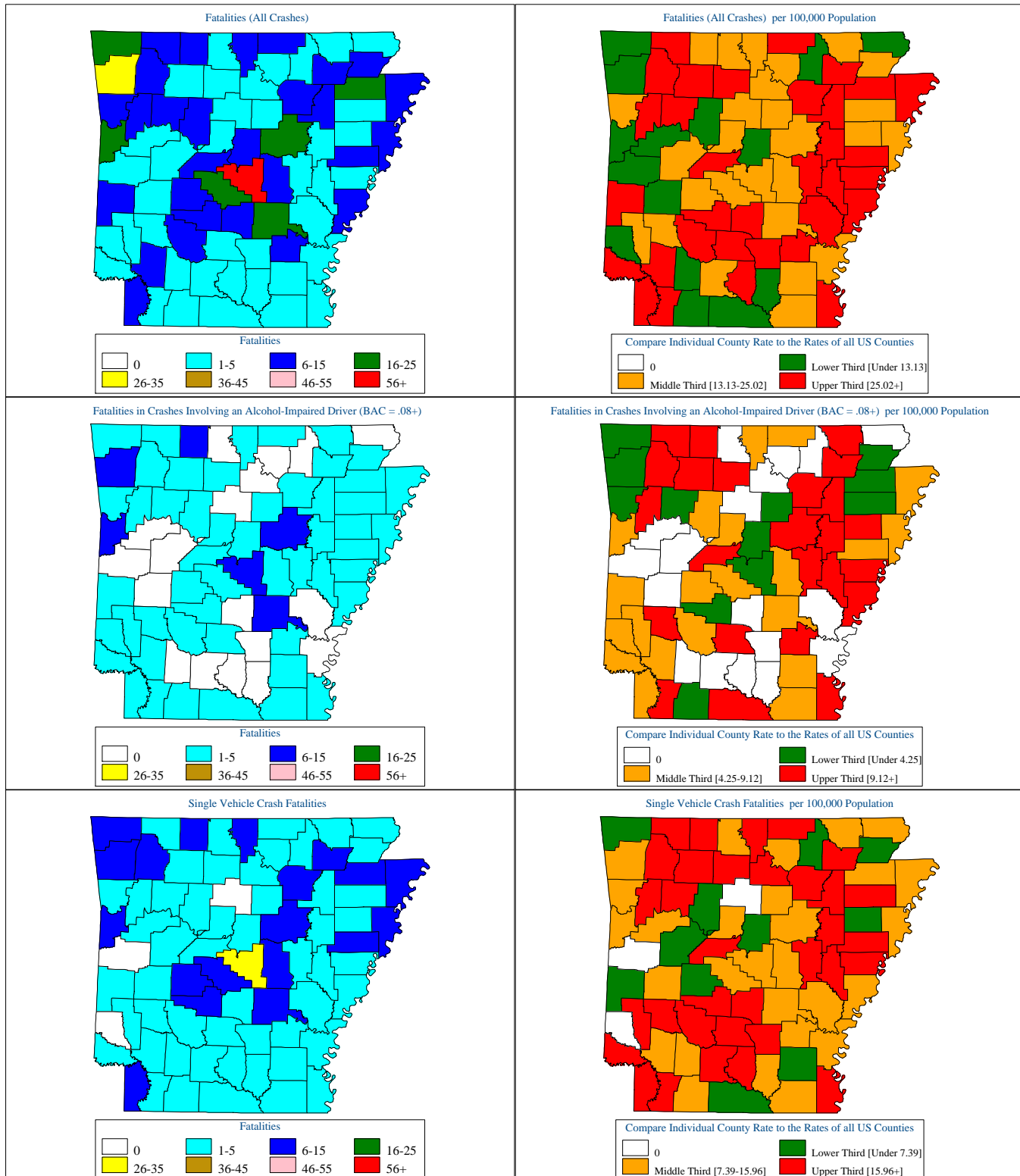
\*This Sub Rate is the Rate for the Top Ten Counties

\*\*This Sub Rate is the Rate for all Counties Outside the Top Ten

[Back To The Table of Contents](#)



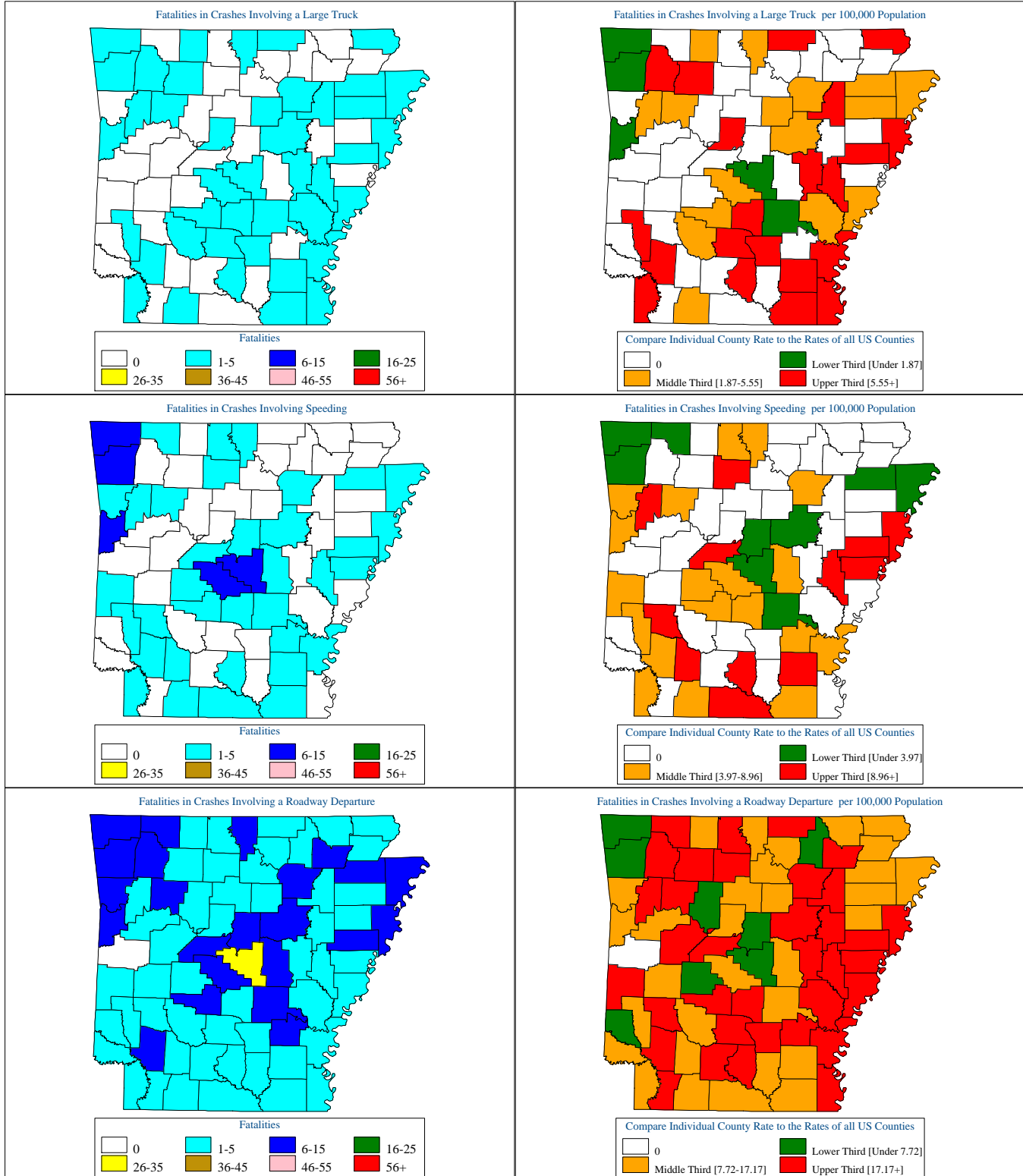
### Arkansas Motor Vehicle Crash Fatality Maps for 2009



[Back To The Table of Contents](#)



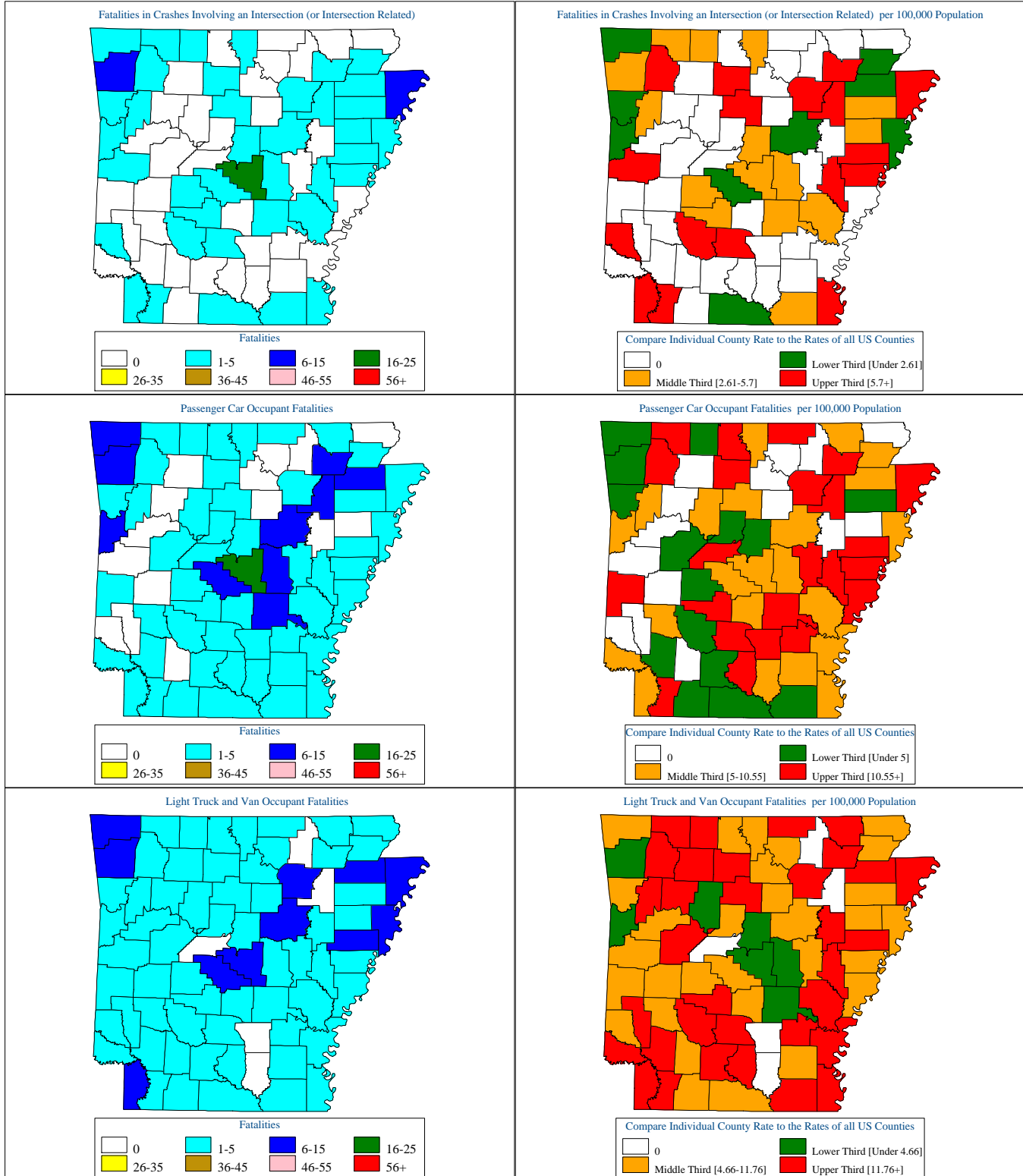
### Arkansas Motor Vehicle Crash Fatality Maps for 2009



[Back To The Table of Contents](#)



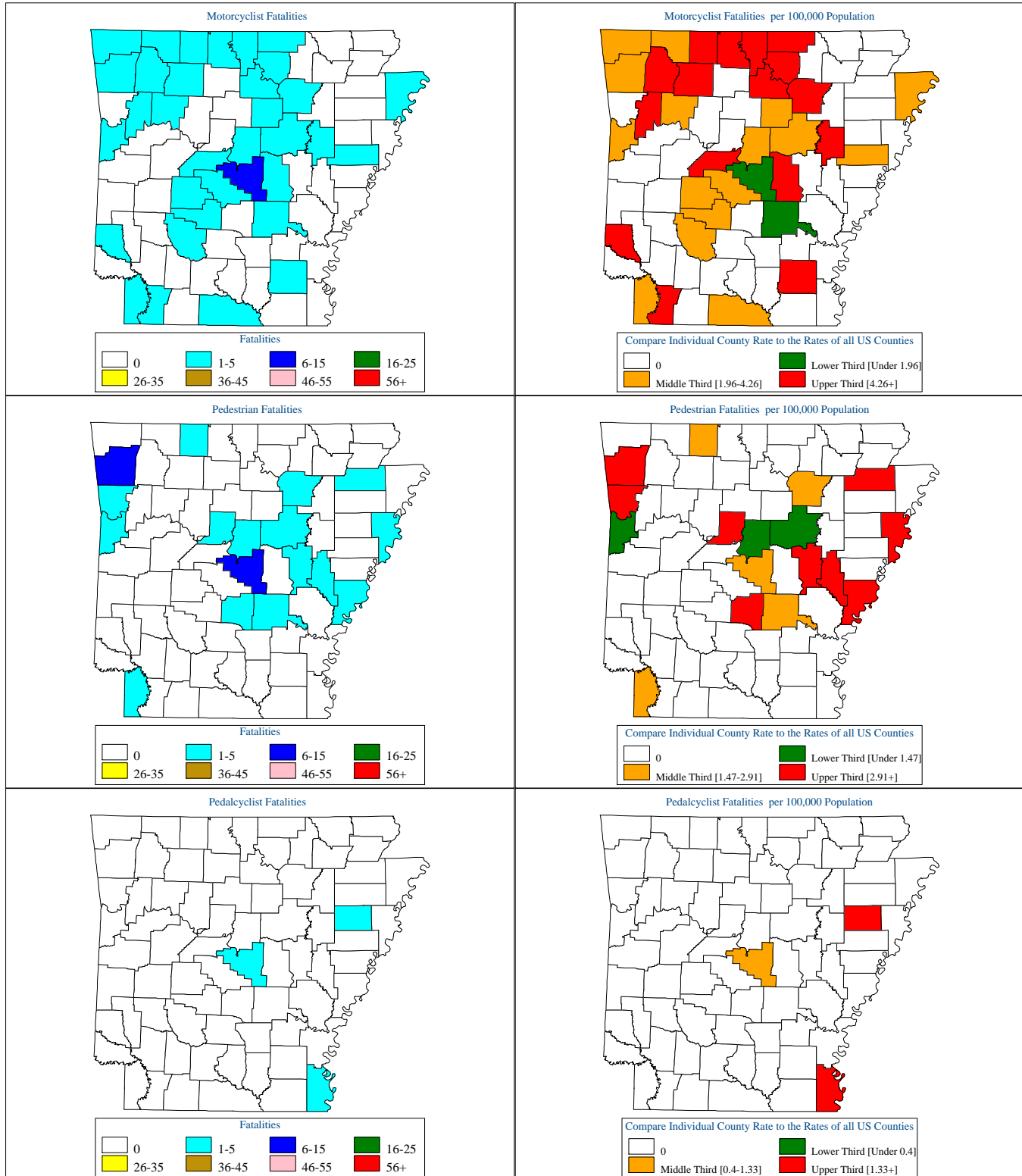
### Arkansas Motor Vehicle Crash Fatality Maps for 2009



[Back To The Table of Contents](#)



### Arkansas Motor Vehicle Crash Fatality Maps for 2009



[Back To The Table of Contents](#)