



Traffic Safety Facts California 2005-2009



This Report Contains Data From the Following Sources:

Fatality Data - NCSA Fatality Analysis Reporting System (FARS): 2005-2008 Final File and 2009 Annual Report File (ARF)

Observed Safety Belt Data - NCSA National Occupant Protection Use Survey (NOPUS) and the California State Survey

Vehicle Miles of Travel Data and Motorcycle Registrations - Federal Highway Administration (FHWA)

Population Data - U.S. Bureau of the Census



Table of Contents (Listed by Table Title and Page Number)

3. Traffic Safety Performance Measures
4. Fatality Rates: California , U.S. and Best State
5. Alcohol-Related Fatalities: California , U.S. and Best State (Old Definition)
6. Alcohol-Impaired Driving Fatalities: California , U.S. and Best State (New Definition)
7. Fatalities Per 100 Million VMT: California , U.S.
7. Alcohol-Impaired Driving Fatalities Per 100 Million VMT: California , U.S.
8. Blood Alcohol Concentration (BAC) Reporting Rates For Drivers/Motorcycle Rider (Operators) Involved in Fatal Crashes: California , U.S. and Best State
9. Front Seat Passenger Vehicle Occupants, Aged 5 and Over, by Restraint Use: Fatalities and Observed California , U.S. and Best State
10. Front Seat Passenger Vehicle Occupant Fatalities, Aged 5 and Over, by Percent Restraint Use: California , U.S.
10. Front Seat Passenger Vehicle Occupants Observed, Aged 5 and Over, by Percent Restraint Use: California , U.S.
11. Passenger Vehicle Occupant Fatalities Aged 5 and Above by Restraint Use and Lives Saved Estimates
11. Passenger Vehicle Occupant Fatalities Aged Under 5 by Restraint Use and Lives Saved Estimates
12. Motorcyclist Fatalities by Helmet Use and Lives Saved Estimates
13. Fatalities by Person Type
14. Fatalities by Crash Type
15. Motorcyclist Fatalities by Age
15. Motorcyclist Fatalities Per 100,000 Registered Motorcycles
16. Fatalities by Person Type and Race/Hispanic Origin
17. Top 10 Counties for Fatalities
18. Top 10 Counties for Fatalities: Year to Year Percent Change
19. Top 10 Counties for Fatality Rates
20. Motor Vehicle Crash Fatality Maps:
Total Fatalities, Alcohol-Impaired Driving Fatalities, Single Vehicle Crash Fatalities
21. Motor Vehicle Crash Fatality Maps:
Large Truck Crash Fatalities, Speeding Involved Fatalities, Roadway Departure Fatalities
22. Motor Vehicle Crash Fatality Maps:
Intersection Fatalities, Passenger Car Occupants, Light Truck and Van Occupants
23. Motor Vehicle Crash Fatality Maps:
Motorcyclist Fatalities, Pedestrian Fatalities, Pedestrian Fatalities



Traffic Safety Performance (Core Outcome) Measures* For California

Core Outcome Measures		Year				
		2005	2006	2007	2008	2009
Traffic Fatalities	Total	4,333	4,240	3,995	3,434	3,081
	Rural	1,751	1,576	1,496	1,324	1,319
	Urban	2,582	2,663	2,499	2,110	1,762
	Unknown	0	1	0	0	0
Fatalities Per 100 Million Vehicle Miles Driven	Total	1.32	1.29	1.22	1.05	0.95
	Rural	2.80	2.60	2.46	2.26	2.27
	Urban	0.97	1.00	0.93	0.79	0.66
Passenger Vehicle Occupant Fatalities (All Seat Positions)	Total	2,897	2,762	2,601	2,023	1,917
	Restrained	1,604	1,557	1,498	1,170	1,149
	Unrestrained	974	920	859	702	639
	Unknown	319	285	244	151	129
Alcohol-Impaired Driving Fatalities (BAC=.08+)**		1,298	1,272	1,132	1,025	950
Speeding-Related Fatalities		1,473	1,404	1,472	1,141	1,087
Motorcyclist Fatalities	Total	469	506	518	560	394
	Helmeted	401	430	440	486	342
	Unhelmeted	56	67	68	68	46
	Unknown	12	9	10	6	6
Drivers Involved in Fatal Crashes	Total	5,769	5,774	5,522	4,710	4,180
	Aged Under 15	8	8	5	4	2
	Aged 15-20	737	719	604	523	427
	Aged Under 21	745	727	609	527	429
	Aged 21 and Over	4,836	4,867	4,746	4,048	3,641
	Unknown Age	188	180	167	135	110
Pedestrian Fatalities		742	719	650	620	563

*These Performance Measures Were Developed By The National Highway Traffic Safety Administration (NHTSA) and the Governors Highway Safety Association (GHSA) (See Publication: DOT HS 811 025)

**Based on the BAC of All Involved Drivers and Motorcycle Riders (Operators) Only

[Back To The Table of Contents](#)



Fatality Rates: California , U.S. and Best State

Year		Fatalities	Total Vehicle Miles Traveled (Millions)	Fatalities Per 100 Million Vehicle Miles Traveled	Total Population	Fatalities Per 100,000 Population
2005	California	4,333	329,267	1.32	35,795,255	12.10
	US	43,510	2,989,430	1.46	295,753,151	14.71
	Best State*			0.80		6.83
2006	California	4,240	327,478	1.29	35,979,208	11.78
	US	42,708	3,014,371	1.42	298,593,212	14.30
	Best State*			0.78		6.34
2007	California	3,995	328,312	1.22	36,226,122	11.03
	US	41,259	3,031,124	1.36	301,579,895	13.68
	Best State*			0.79		6.54
2008	California	3,434	327,286	1.05	36,580,371	9.39
	US	37,423	2,976,528	1.26	304,374,846	12.30
	Best State*			0.67		5.56
2009	California	3,081	324,486	0.95	36,961,664	8.34
	US	33,808	2,953,501	1.14	307,006,550	11.01
	Best State*			0.61		4.84

*State (or States) With Lowest Rates: Lowest VMT and Population Rates Could Be in Different States

[Back To The Table of Contents](#)



Fatalities By The Highest Blood Alcohol Concentration (BAC) in the Crash:**
California , U.S. and Best State
(Old Definition)

Year		Total Fatalities in all Crashes	Highest BAC level in the Crash					
			BAC = .01+			BAC = .08+		
			Number	Percent	Per 100 Million VMT	Number	Percent	Per 100 Million VMT
2005	California	4,333	1,769	41	0.54	1,505	35	0.46
	US	43,510	17,590	40	0.59	15,102	35	0.51
	Best State*			14	0.16		12	0.14
2006	California	4,240	1,762	42	0.54	1,495	35	0.46
	US	42,708	17,738	42	0.59	15,144	35	0.50
	Best State*			24	0.26		20	0.22
2007	California	3,995	1,606	40	0.49	1,331	33	0.41
	US	41,259	17,158	42	0.57	14,603	35	0.48
	Best State*			24	0.27		21	0.23
2008	California	3,434	1,425	41	0.44	1,246	36	0.38
	US	37,423	15,449	41	0.52	13,258	35	0.45
	Best State*			21	0.21		16	0.16
2009	California	3,081	1,322	43	0.41	1,144	37	0.35
	US	33,808	14,188	42	0.48	12,233	36	0.41
	Best State*			23	0.22		18	0.16

*State (or States) With Lowest Percents: Lowest Percents Could Be in Different States

**Based on the BAC of All Involved Drivers, Motorcycle Riders (Operators), Pedalcyclists and Pedestrians

[Back To The Table of Contents](#)



Alcohol-Impaired Driving Fatalities**:
California , U.S. and Best State
(New Definition)

Year		Total Fatalities in all Crashes	Alcohol-Impaired Driving Fatalities (BAC = .08+)		
			Number	Percent	Per 100 Million VMT
2005	California	4,333	1,298	30	0.39
	US	43,510	13,582	31	0.45
	Best State*			12	0.13
2006	California	4,240	1,272	30	0.39
	US	42,708	13,491	32	0.45
	Best State*			18	0.20
2007	California	3,995	1,132	28	0.34
	US	41,259	13,041	32	0.43
	Best State*			19	0.21
2008	California	3,434	1,025	30	0.31
	US	37,423	11,711	31	0.39
	Best State*			16	0.16
2009	California	3,081	950	31	0.29
	US	33,808	10,839	32	0.37
	Best State*			16	0.15

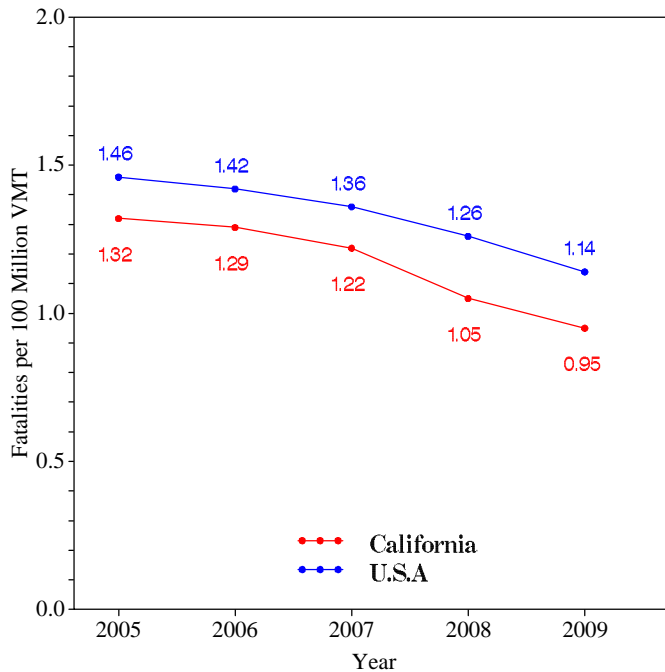
*State (or States) With Lowest Percents: Lowest Percents Could Be in Different States

**Based on the BAC of All Involved Drivers and Motorcycle Riders (Operators) Only

[Back To The Table of Contents](#)

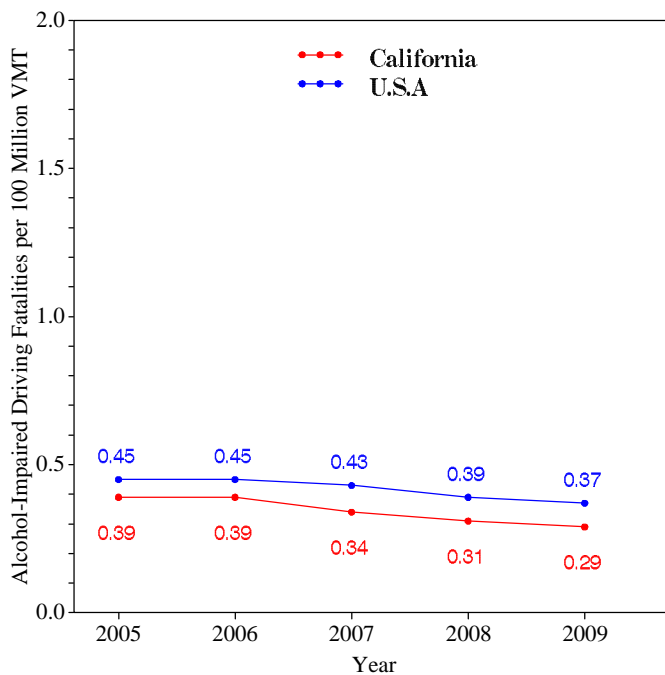


Fatalities per 100 Million VMT



[Back To The Table of Contents](#)

Alcohol-Impaired Driving Fatalities per 100 Million VMT



[Back To The Table of Contents](#)



**Blood Alcohol Concentration (BAC) Reporting Rates
For Drivers/Motorcycle Riders (Operators)
Involved in Fatal Crashes:
California , U.S. and Best State**

Year		Surviving Drivers/Motorcycle Riders			Killed Drivers/Motorcycle Riders			Total Drivers/Motorcycle Riders		
		Total	With Blood Alcohol Concentration (BAC) Results Reported to FARS		Total	With Blood Alcohol Concentration (BAC) Results Reported to FARS		Total	With Blood Alcohol Concentration (BAC) Results Reported to FARS	
			Number	Percent		Number	Percent		Number	Percent
2005	California	3,459	649	19	2,310	1,951	84	5,769	2,600	45
	US	31,729	7,415	23	27,491	18,773	68	59,220	26,188	44
	Best State*			77			98			84
2006	California	3,439	590	17	2,335	2,113	90	5,774	2,703	47
	US	30,498	7,482	25	27,348	18,911	69	57,846	26,393	46
	Best State*			81			99			85
2007	California	3,279	624	19	2,243	2,058	92	5,522	2,682	49
	US	29,449	7,631	26	26,570	19,434	73	56,019	27,065	48
	Best State*			82			100			84
2008	California	2,760	673	24	1,950	1,787	92	4,710	2,460	52
	US	26,162	7,656	29	24,254	18,415	76	50,416	26,071	52
	Best State*			81			99			85
2009	California	2,502	531	21	1,678	1,475	88	4,180	2,006	48
	US	23,432	6,372	27	21,798	15,505	71	45,230	21,877	48
	Best State*			86			97			90

*State (or States) With Highest Percents: Highest Percents Could Be in Different States

[Back To The Table of Contents](#)



Daytime Front Seat (Outboard Only) Passenger Vehicle Occupants, Aged 5 and Over, by Restraint Use: Fatalities and Observed California , U.S. and Best State

Table with 3 columns: Year, Restraint Type (California, US, Best State*), Fatalities - Restrained** (Percent), and Observed - Restrained*** (Percent). Rows are grouped by year from 2005 to 2009.

*State With Highest Percent. Fatal Crash and Observed Percents Can Be Different States

**Percent Based Only Where Restraint Use Was Known

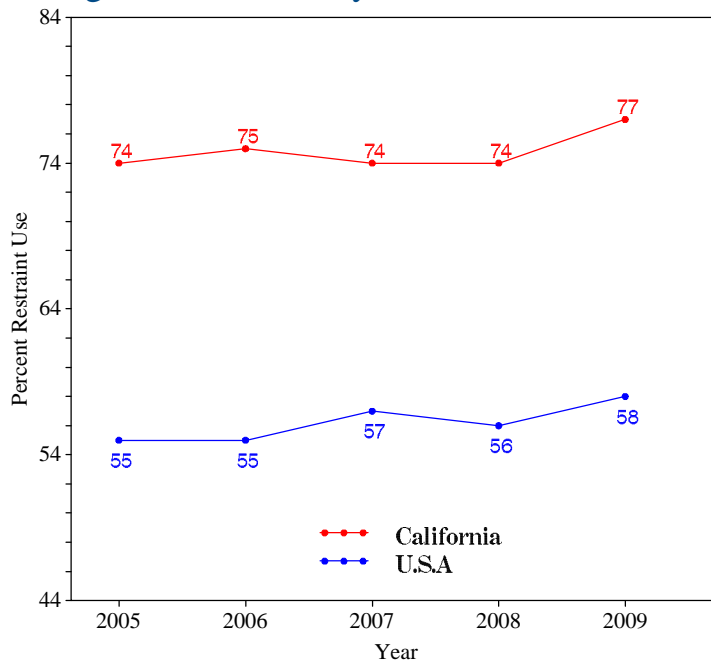
***USA Data: National Occupant Protection Use Survey. California Data: State Survey

Note: The Purpose of this Table is to Compare (as closely as possible) the Use of Restraint Systems by Fatally Injured Occupants with Occupants in all Driving Situations

Back To The Table of Contents



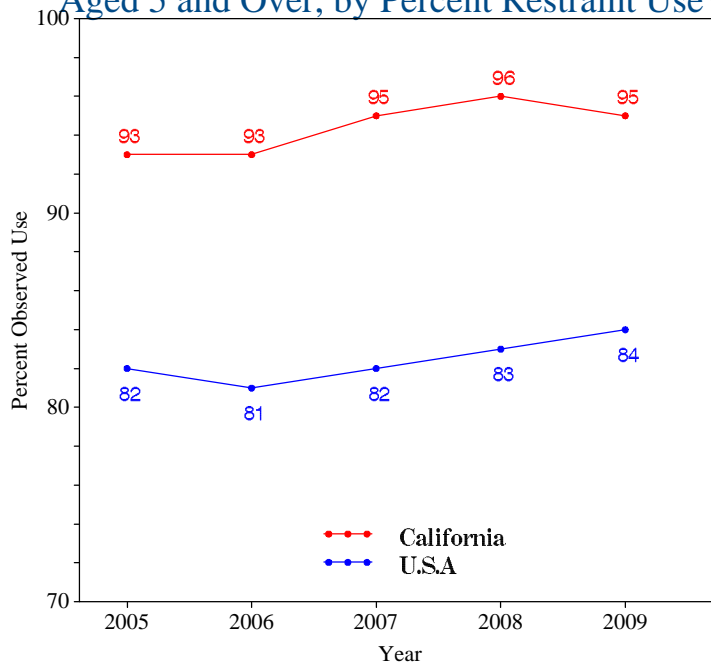
Daytime Front Seat (Outboard Only) Passenger Vehicle Occupant Fatalities, Aged 5 and Over, by Percent Restraint Use*



*Percent Based Only Where Restraint Use Was Known

[Back To The Table of Contents](#)

Daytime Front Seat (Outboard Only) Passenger Vehicle Occupants Observed, Aged 5 and Over, by Percent Restraint Use*



*USA Data: National Occupant Protection Use Survey. California Data: State Survey

[Back To The Table of Contents](#)



Passenger Vehicle Occupant Fatalities Age 5 and Above by Restraint Use and Lives Saved Estimates

Year	Fatalities Age 5 and Above					Lives Saved Estimates**	
	Total	Restrained	Unrestrained	Unknown Restraint Use	Percent Known Restrained*	Lives Saved at Current Belt Use	Additional Lives Savable at 100% Belt Usage
2005	2,847	1,578	955	314	62	1,951	267
2006	2,710	1,522	907	281	63	1,888	316
2007	2,552	1,464	847	241	63	1,791	196
2008	1,997	1,151	697	149	62	1,424	161
2009	1,882	1,130	626	126	64	1,365	147

*Percent Based Only Where Restraint Use Was Known

**Lives Saved Estimates (Sum of columns may not equal other published numbers due to rounding)

[Back To The Table of Contents](#)

Passenger Vehicle Occupant Fatalities Age 4 and Under by Restraint Use and Lives Saved Estimates

Year	Fatalities Age 4 and Under					Lives Saved Estimates**	
	Total	Restrained	Unrestrained	Unknown Restraint Use	Percent Known Restrained*	Lives Saved at Current Seat Belt and Child Safety Seat Usage	
2005	47	25	19	3	57	39	
2006	50	34	13	3	72	52	
2007	49	34	12	3	74	52	
2008	25	18	5	2	78	33	
2009	34	19	12	3	61	31	

*Percent Based Only Where Restraint Use Was Known

**Lives Saved Estimates

[Back To The Table of Contents](#)



Motorcyclist Fatalities by Helmet Use and Lives Saved Estimates

Year	Fatalities					Lives Saved Estimates**	
	Total	Helmeted	Unhelmeted	Unknown Helmet Use	Percent Known Helmeted*	Lives Saved at Current Helmet Use	Additional Lives Savable at 100% Helmet Usage
2005	469	401	56	12	88	242	22
2006	506	430	67	9	87	258	27
2007	518	440	68	10	87	266	26
2008	560	486	68	6	88	291	26
2009	394	342	46	6	88	205	17

*Percent Based Only Where Helmet Use Was Known

**Lives Saved Estimates (Sum of columns may not equal other published numbers due to rounding)

[Back To The Table of Contents](#)



Fatalities by Person Type

Person Type		2005		2006		2007		2008		2009	
		#	%*	#	%*	#	%*	#	%*	#	%*
Occupants	Passenger Car	1,801	42	1,737	41	1,622	41	1,281	37	1,199	39
	Light Truck - Pickup	418	10	464	11	401	10	300	9	323	10
	Light Truck - Utility	447	10	410	10	420	11	316	9	284	9
	Light Truck - Van	229	5	151	4	157	4	122	4	109	4
	Light Truck - Other	2	0	0	0	1	0	4	0	2	0
	Large Truck	41	1	43	1	49	1	40	1	36	1
	Bus	7	0	3	0	2	0	12	0	7	0
	Other/Unknown Occupants	32	1	36	1	34	1	37	1	25	1
	Total Occupants	2,977	69	2,844	67	2,686	67	2,112	62	1,985	64
Motorcyclists	Total Motorcyclists	469	11	506	12	518	13	560	16	394	13
Nonoccupants	Pedestrian	742	17	719	17	650	16	620	18	563	18
	Bicyclist and Other Cyclist	115	3	141	3	109	3	109	3	99	3
	Other/Unknown Nonoccupants	30	1	30	1	32	1	33	1	40	1
	Total Nonoccupants	887	20	890	21	791	20	762	22	702	23
Total	Total	4,333	100	4,240	100	3,995	100	3,434	100	3,081	100

*Sum of Percents May Not = 100 Due to Individual Cell Rounding

[Back To The Table of Contents](#)



Fatalities by Crash Type

Crash Type	2005	2006	2007	2008	2009
Total Fatalities (All Crashes)*	4,333	4,240	3,995	3,434	3,081
- (1) Single Vehicle	2,491	2,418	2,328	2,062	1,874
- (2) Involving a Large Truck	429	394	366	318	274
- (3) Involving Speeding	1,473	1,404	1,472	1,141	1,087
- (4) Involving a Rollover	1,247	1,192	1,153	918	849
- (5) Involving a Roadway Departure	2,109	2,066	2,015	1,693	1,468
- (6) Involving an Intersection (or Intersection Related)	936	855	851	764	692

(1) Crash Involved Only One Coded Vehicle

(2) Crash Involved at Least One Large Truck

(3) Crash Involved at Least One Vehicle Speeding

(4) Crash Involved at Least One Vehicle That Rolled Over

(5) Crash Involved at Least One Vehicle That Departed the Roadway (FHWA Definition)

(6) Crash Occured Within an Intersection or Within the Approach to an Intersection

*A Fatality Can Be in More Than One Category. Therefore Sum of the Individual Cells Will Not Equal the Total Due to Double Counting

[Back To The Table of Contents](#)



Motorcyclist Fatalities by Age

Year	Age						Total
	<20	20-29	30-39	40-49	50-59	>59	
2005	28	139	86	106	81	29	469
2006	27	136	95	132	89	27	506
2007	13	164	105	114	90	32	518
2008	30	169	110	97	97	57	560
2009	16	116	65	72	83	42	394

[Back To The Table of Contents](#)

Motorcyclist Fatalities Per 100,000 Registered Motorcycles

Year	Motorcyclist Fatalities	Total Motorcycle Registrations*	Motorcyclist Fatalities Per 100,000 Motorcycle Registrations
2005	469	675,336	69.45
2006	506	726,095	69.69
2007	518	767,319	67.51
2008	560	757,793	73.90
2009	394	776,224	50.76

*Data Source: FHWA

[Back To The Table of Contents](#)



Fatalities by Person Type and Race/Hispanic Origin

Person Type by Race/Hispanic Origin		2005	2006	2007	2008
Occupants (All Vehicle Types)	Hispanic	1,239	1,256	1,246	940
	White Non-Hispanic	1,661	1,574	1,480	1,224
	Black, Non-Hispanic	215	205	199	155
	American Indian, Non-Hispanic/Unknown	29	30	24	26
	Asian, Non-Hispanic/Unknown	211	185	163	107
	Pacific Islander, Non-Hispanic/Unknown	3	5	5	13
	Multiple Races, Non-Hispanic/Unknown	51	39	31	42
	All Other Non-Hispanic or Race	36	52	56	64
	Unknown Race and Unknown Hispanic	1	4	0	101
	Total	3,446	3,350	3,204	2,672
Non-Occupants (Pedestrians, Pedalcyclists and Other/Unknown NonOccupants)					
	Hispanic	360	350	315	288
	White Non-Hispanic	346	350	311	266
	Black, Non-Hispanic	67	84	62	76
	American Indian, Non-Hispanic/Unknown	4	6	6	10
	Asian, Non-Hispanic/Unknown	81	81	67	65
	Pacific Islander, Non-Hispanic/Unknown	1	3	0	2
	Multiple Races, Non-Hispanic/Unknown	13	0	9	10
	All Other Non-Hispanic or Race	14	14	21	18
	Unknown Race and Unknown Hispanic	1	2	0	27
Total	887	890	791	762	
Total	4,333	4,240	3,995	3,434	

2009 Race/Hispanic Origin Data is Not Yet Complete

[Back To The Table of Contents](#)



5 Year Trend For The Top 10 Counties of 2009 - Fatalities

Counties by 2009 Ranking		Fatalities					Percent of Total				
		2005	2006	2007	2008	2009	2005	2006	2007	2008	2009
1	Los Angeles County	750	799	765	711	588	17	19	19	21	19
2	San Bernardino County	427	405	360	293	240	10	10	9	9	8
3	San Diego County	309	303	292	263	232	7	7	7	8	8
4	Riverside County	333	356	324	253	224	8	8	8	7	7
5	Kern County	178	202	156	115	157	4	5	4	3	5
6	Orange County	203	208	194	163	154	5	5	5	5	5
7	Fresno County	164	155	159	138	121	4	4	4	4	4
8	Sacramento County	162	128	141	91	109	4	3	4	3	4
9	Santa Clara County	106	96	101	102	87	2	2	3	3	3
10	Tulare County	115	98	97	76	74	3	2	2	2	2
Sub Total 1.*	Top Ten Counties	2,765	2,772	2,601	2,218	1,986	64	65	65	65	64
Sub Total 2.**	All Other Counties	1,568	1,468	1,394	1,216	1,095	36	35	35	35	36
Total	All Counties	4,333	4,240	3,995	3,434	3,081	100	100	100	100	100

*This Sub Total is the Total for the Top Ten Counties

**This Sub Total is the Total for all Counties Outside the Top Ten

[Back To The Table of Contents](#)



5 Year Trend For The Top 10 Counties of 2009 - Fatalities Year to Year Percent Change

Counties by 2009 Ranking		Fatalities					Percent Change From Previous Year			
		2005	2006	2007	2008	2009	2006	2007	2008	2009
1	Los Angeles County	750	799	765	711	588	7	-4	-7	-17
2	San Bernardino County	427	405	360	293	240	-5	-11	-19	-18
3	San Diego County	309	303	292	263	232	-2	-4	-10	-12
4	Riverside County	333	356	324	253	224	7	-9	-22	-11
5	Kern County	178	202	156	115	157	13	-23	-26	37
6	Orange County	203	208	194	163	154	2	-7	-16	-6
7	Fresno County	164	155	159	138	121	-5	3	-13	-12
8	Sacramento County	162	128	141	91	109	-21	10	-35	20
9	Santa Clara County	106	96	101	102	87	-9	5	1	-15
10	Tulare County	115	98	97	76	74	-15	-1	-22	-3
Sub Total 1.* <i>Top Ten Counties</i>		2,765	2,772	2,601	2,218	1,986	0	-6	-15	-10
Sub Total 2.** <i>All Other Counties</i>		1,568	1,468	1,394	1,216	1,095	-6	-5	-13	-10
Total <i>All Counties</i>		4,333	4,240	3,995	3,434	3,081	-2	-6	-14	-10

*This Sub Total is the Total for the Top Ten Counties

**This Sub Total is the Total for all Counties Outside the Top Ten

[Back To The Table of Contents](#)



5 Year Trend For The Top 10 Counties of 2009 - Fatality Rates

Median Rate for all U.S. Counties: 18.23

Counties by 2009 Ranking		Fatalities Per 100,000 Population				
		2005	2006	2007	2008	2009
1	Alpine County	267.14	345.42	174.83	189.21	96.06
2	Sierra County	150.06	118.66	30.19	92.31	63.01
3	Mariposa County	22.58	33.53	33.40	27.84	50.58
4	Colusa County	48.68	28.72	52.13	75.63	46.90
5	Inyo County	62.02	102.86	57.35	58.06	34.70
6	Amador County	50.28	34.15	38.98	18.43	34.32
7	Mendocino County	43.78	22.10	21.04	31.47	33.71
8	Tuolumne County	44.43	30.32	19.76	8.99	32.62
9	Trinity County	58.69	43.27	107.66	42.81	28.24
10	Calaveras County	26.27	15.05	36.28	21.30	25.68
	Sub Rate 1.* <i>Top Ten Counties</i>	50.31	45.02	44.62	35.80	34.60
	Sub Rate 2.** <i>All Other Counties</i>	11.79	11.46	10.79	9.12	8.12
	Total Rate <i>All Counties</i>	12.10	11.78	11.03	9.39	8.34

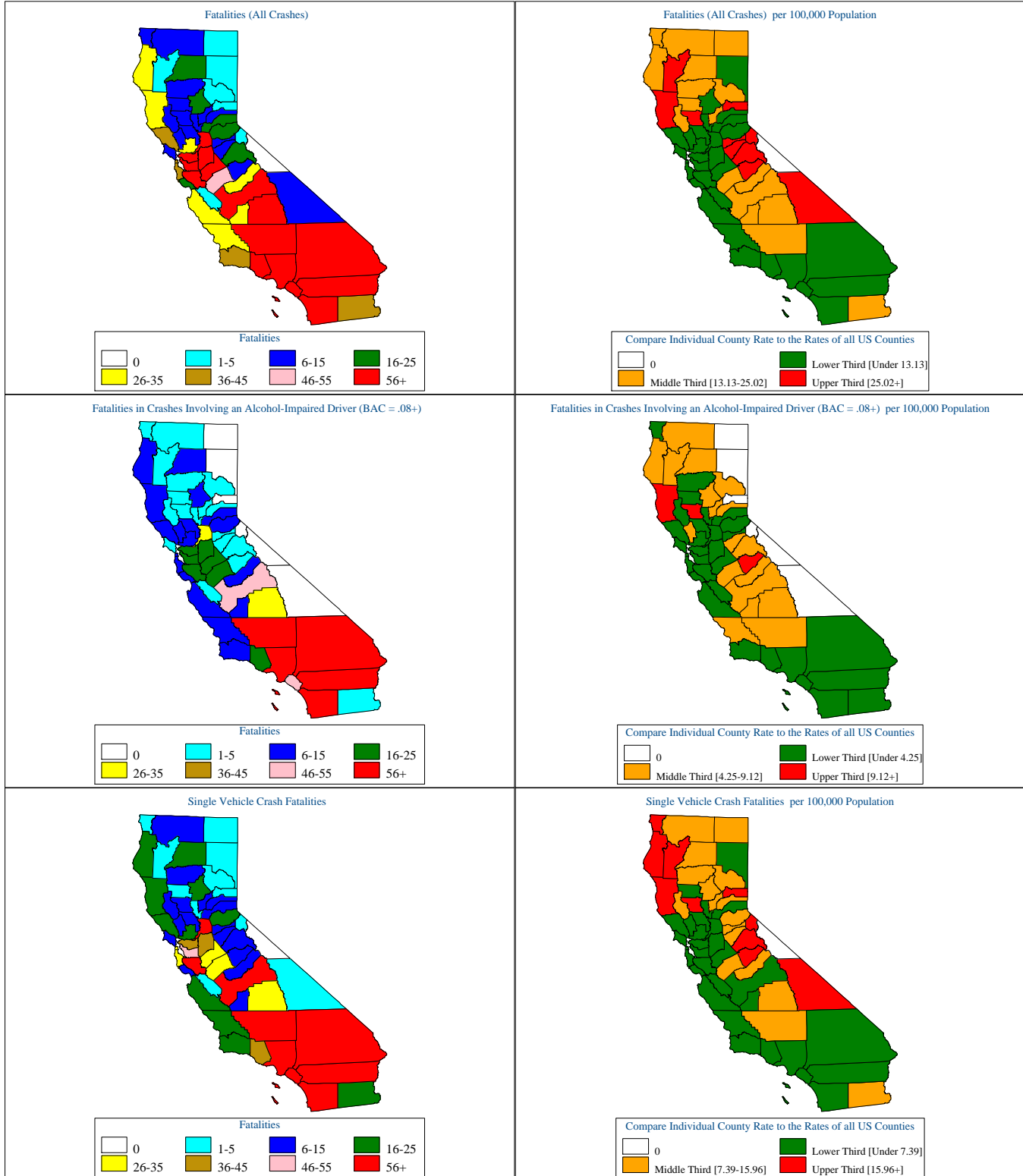
*This Sub Rate is the Rate for the Top Ten Counties

**This Sub Rate is the Rate for all Counties Outside the Top Ten

[Back To The Table of Contents](#)



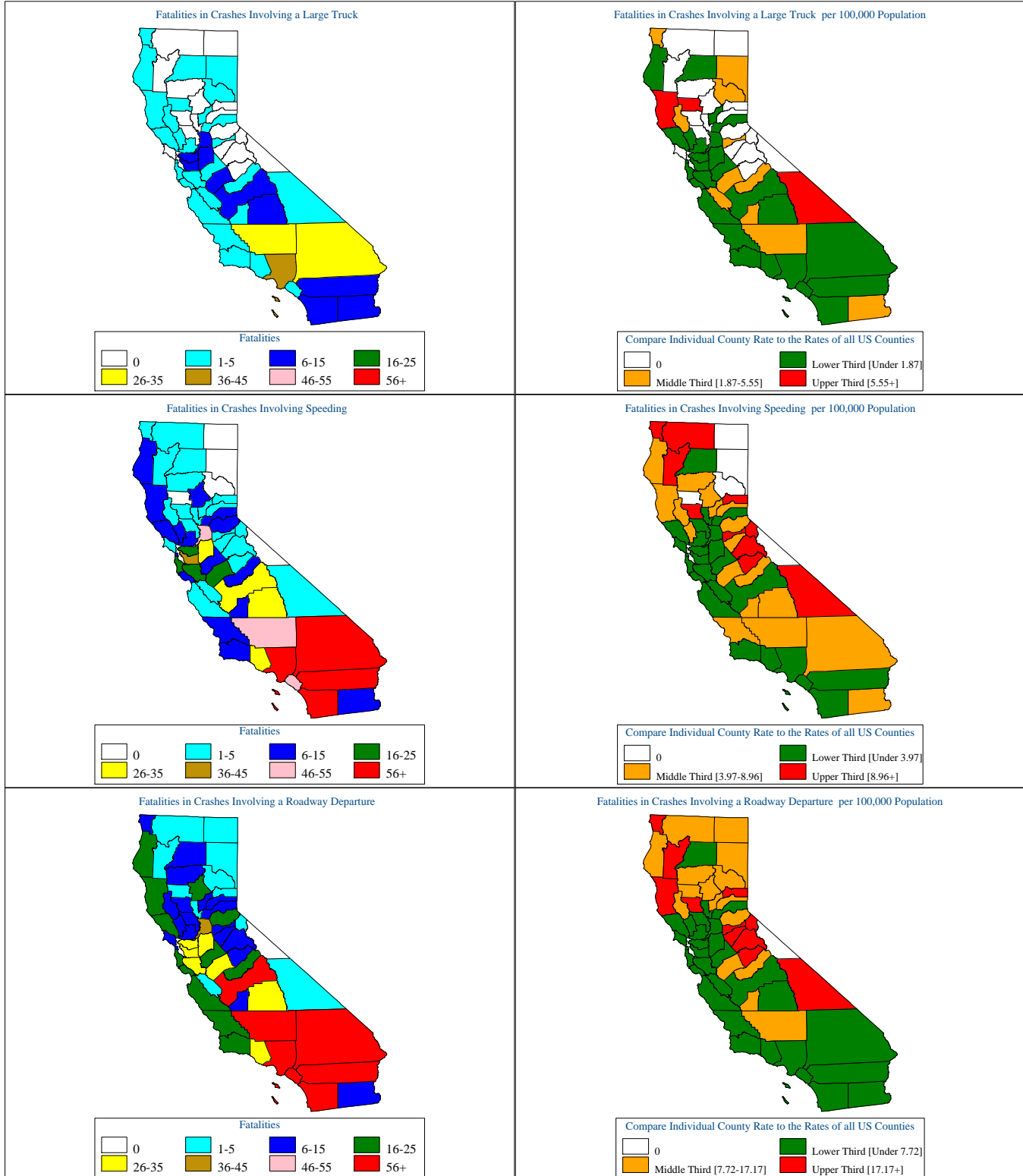
California Motor Vehicle Crash Fatality Maps for 2009



[Back To The Table of Contents](#)



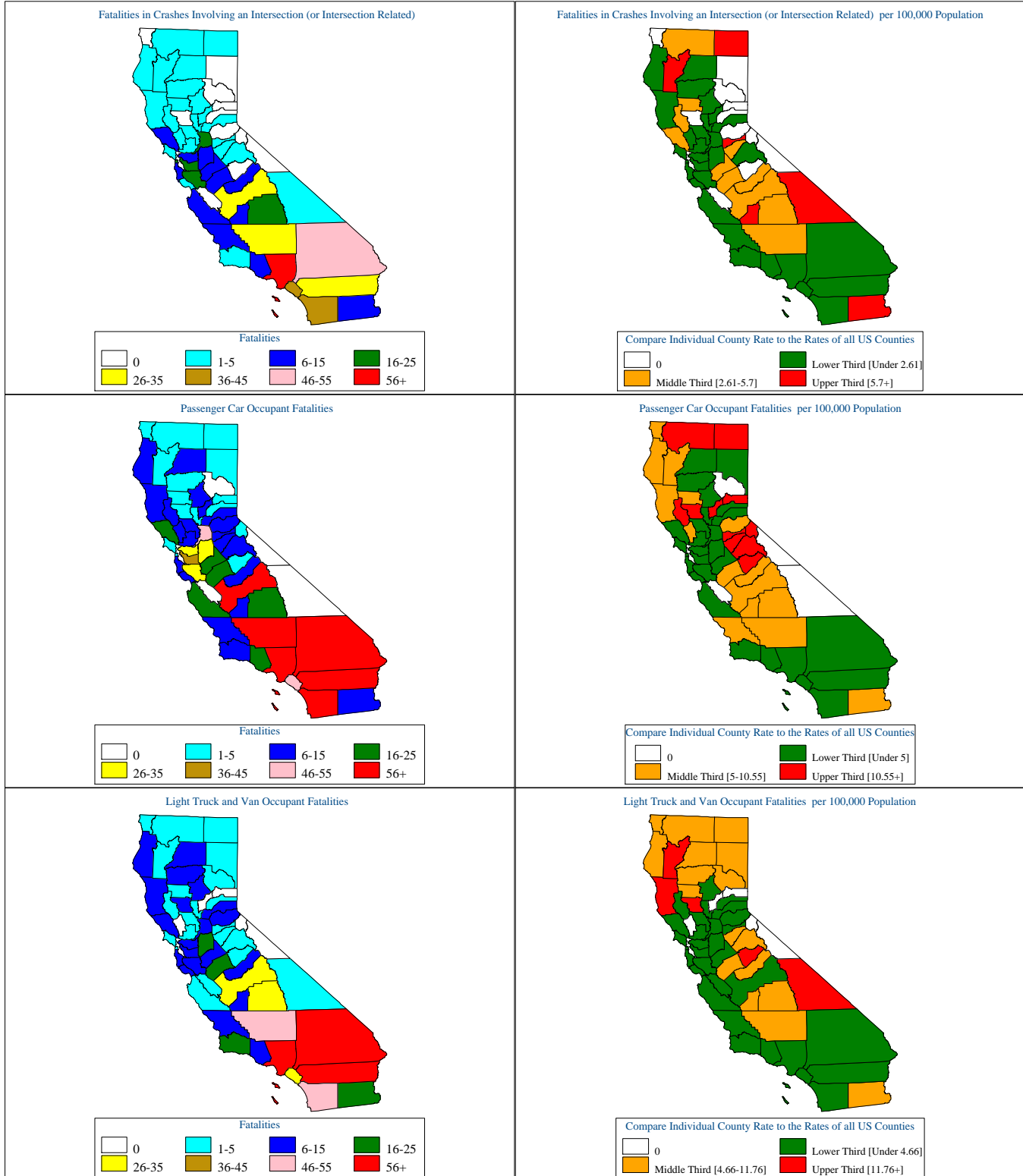
California Motor Vehicle Crash Fatality Maps for 2009



[Back To The Table of Contents](#)



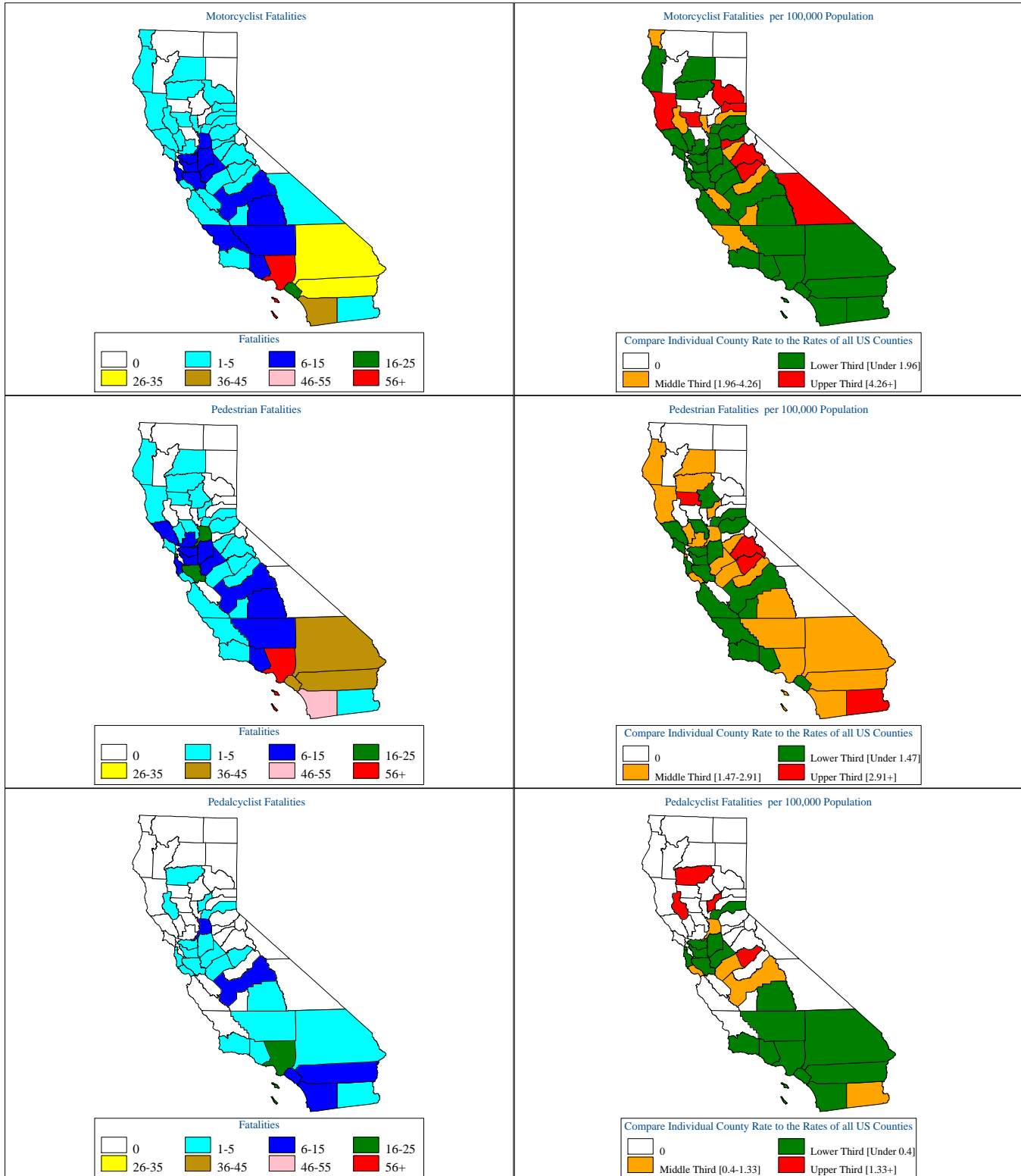
California Motor Vehicle Crash Fatality Maps for 2009



[Back To The Table of Contents](#)



California Motor Vehicle Crash Fatality Maps for 2009



[Back To The Table of Contents](#)