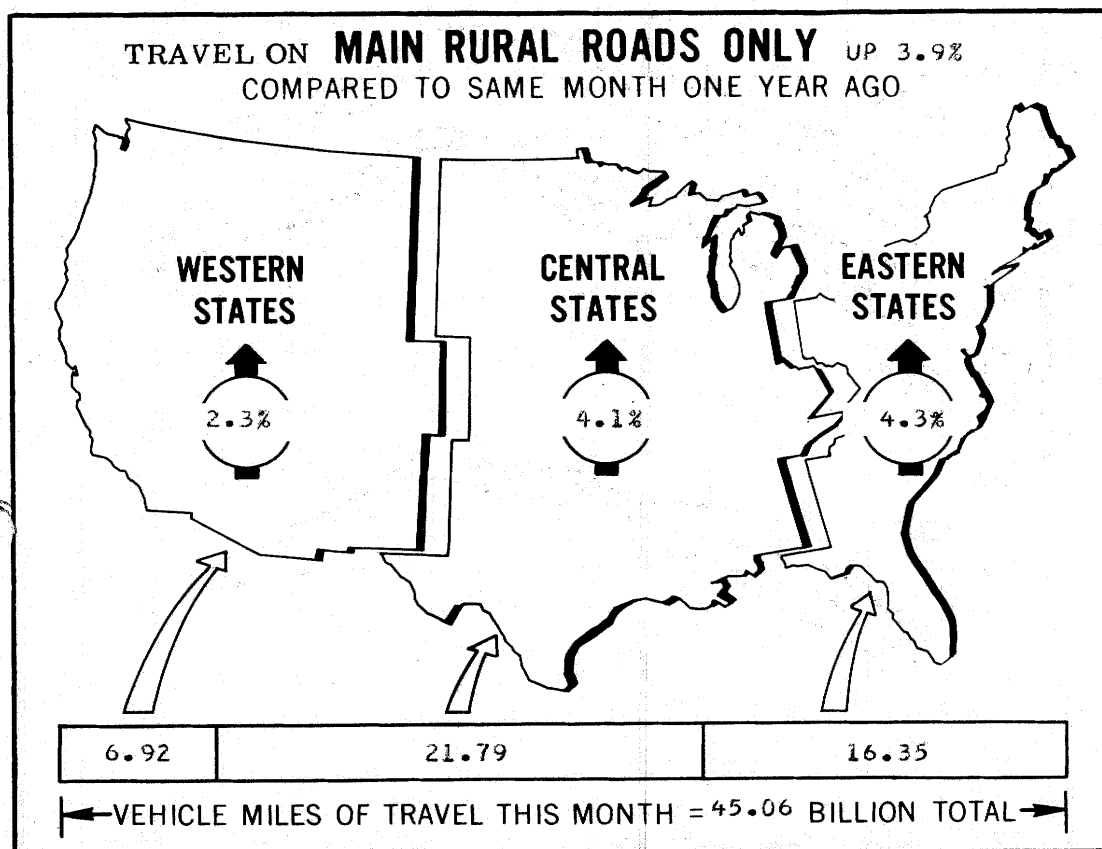


# TRAFFIC VOLUME TRENDS

U. S. DEPARTMENT OF TRANSPORTATION  
FEDERAL HIGHWAY ADMINISTRATION

OCTOBER 1973

TRAVEL ON **ALL ROADS AND STREETS** UP 3.0%  
COMPARED TO SAME MONTH ONE YEAR AGO



✓ ALL DATA FOR THIS MONTH ARE PRELIMINARY, REVISED VALUES FOR PREVIOUS MONTH ARE SHOWN IN TABLES 1 AND 2

FOR OFFICIAL DISTRIBUTION

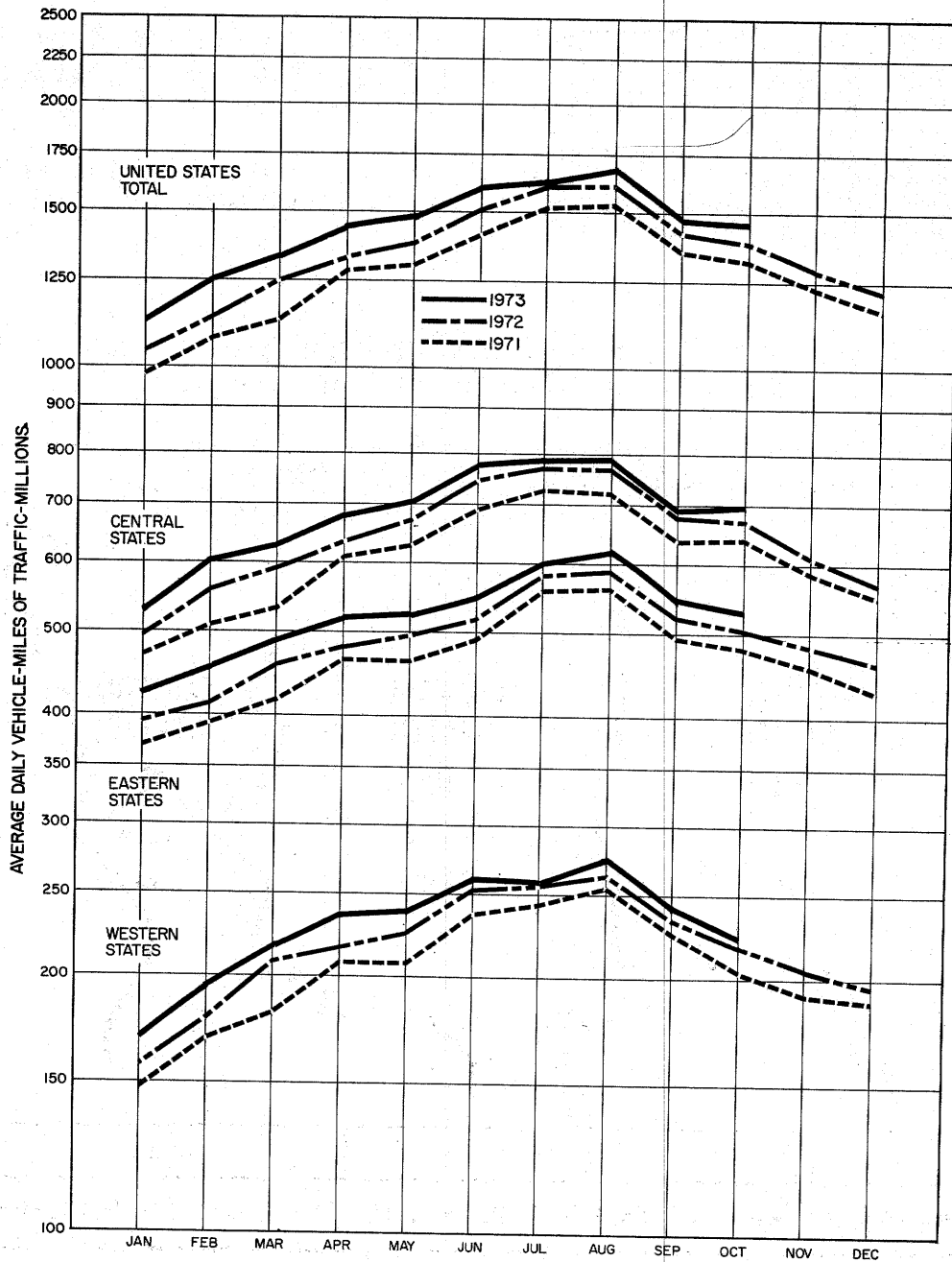


FIGURE 1 - TRAVEL ON MAIN RURAL ROADS, BY MONTHS

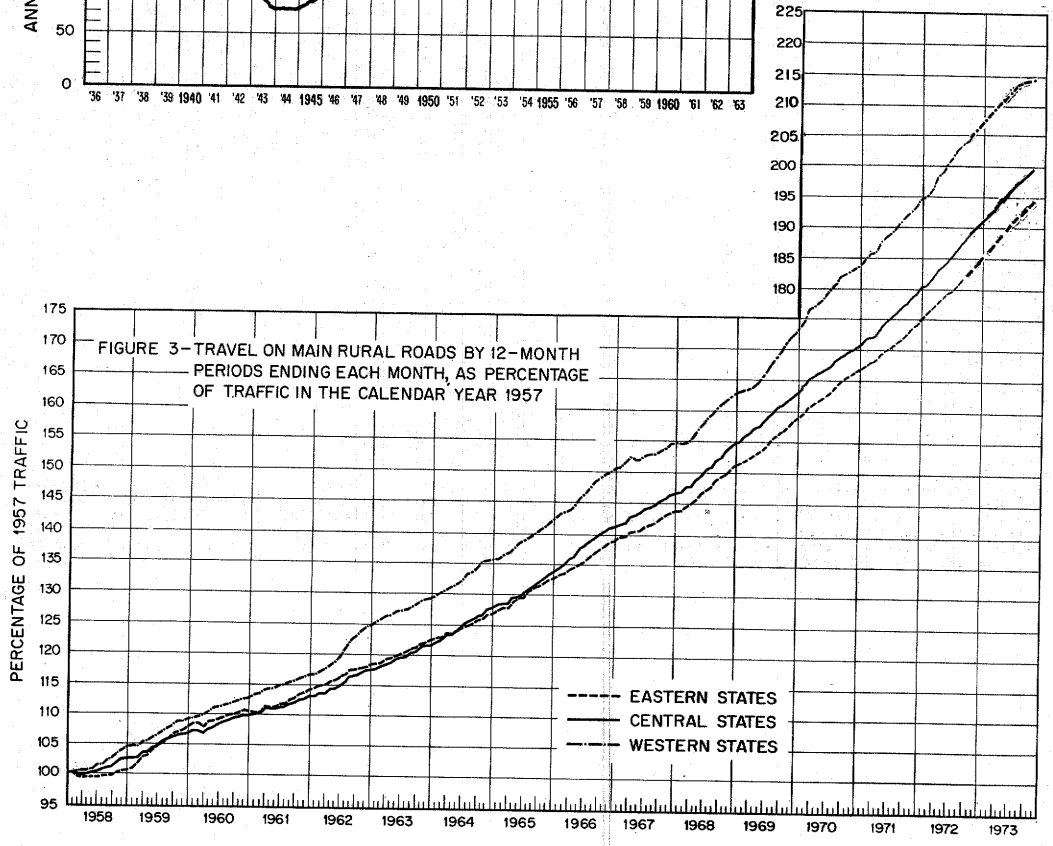
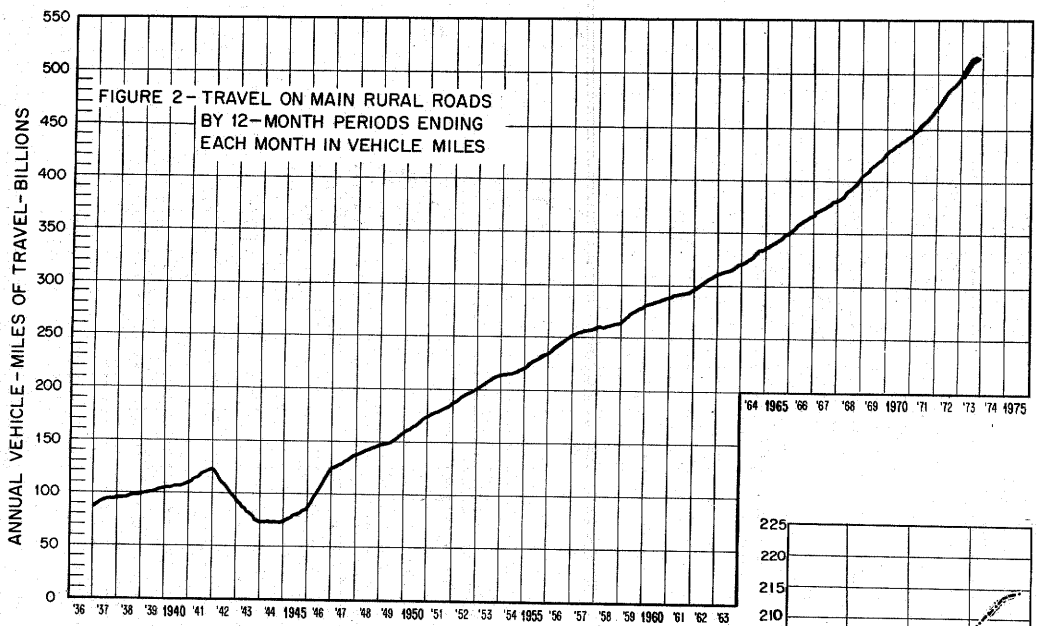


TABLE 1.-SUMMARY BY ROAD CLASS AND BY GEOGRAPHIC AREA

CLASS OF ROAD, ALL STATES:	PRELIMINARY DATA FOR OCTOBER			REVISED DATA FOR SEPTEMBER		
	VEHICLE-MILES (MILLIONS)		PERCENTAGE CHANGE	VEHICLE-MILES (MILLIONS)		PERCENTAGE CHANGE
	1973	1972		1973	1972	
MAIN RURAL ROADS.....	45,228	43,527	3.9	44,363	43,012	3.1
LOCAL RURAL ROADS.....	.....	.....	2.6	.....	.....	2.4
ALL RURAL ROADS.....	.....	.....	3.6	.....	.....	3.0
CITY STREETS.....	.....	.....	2.1	.....	.....	2.4
ALL ROADS AND STREETS.....	.....	.....	3.0	.....	.....	2.7
48 STATES (MAIN RURAL ONLY):						
EASTERN REGION.....	16,352	15,681	4.3	16,259	15,581	4.3
CENTRAL REGION.....	21,791	20,928	4.1	20,700	20,251	2.2
WESTERN REGION.....	6,917	6,765	2.3	7,225	7,006	3.1
TOTAL.....	45,060	43,374	3.9	44,184	42,838	3.1

TABLE 2.-CHANGES ON MAIN RURAL ROADS BY STATES

DIVISION AND STATE	OCTOBER (PRELIMINARY)		SEPTEMBER (REVISED)		DIVISION AND STATE	OCTOBER (PRELIMINARY)		SEPTEMBER (REVISED)	
	NUMBER OF STATIONS	PER-CENTAGE CHANGE	NUMBER OF STATIONS	PER-CENTAGE CHANGE		NUMBER OF STATIONS	PER-CENTAGE CHANGE	NUMBER OF STATIONS	PER-CENTAGE CHANGE
NEW ENGLAND:					EAST SOUTH CENTRAL:				
CONNECTICUT.....	15	4.5	12	5.3	ALABAMA.....	54	6.5	54	4.3
MAINE.....	22	4.5	20	1.0	KENTUCKY.....	37	1.9	35	0.8
MASSACHUSETTS.....	-	-	8	3.4	MISSISSIPPI.....	42	1.9	43	1.7
NEW HAMPSHIRE.....	-	-	50	5.0	TENNESSEE.....	-	-	21	4.9
RHODE ISLAND.....	3	- 5.9	3	- 4.8	WEST NORTH CENTRAL:				
VERMONT.....	45	1.6	46	0.4	IOWA.....	30	3.4	31	0.8
MIDDLE ATLANTIC:					KANSAS.....	74	3.0	76	0.1
NEW JERSEY.....	-	-	-	-	MINNESOTA.....	35	2.0	39	0.5
NEW YORK.....	37	5.5	35	1.2	MISSOURI.....	-	-	73	0.9
PENNSYLVANIA.....	43	3.7	45	3.4	NEBRASKA.....	20	4.0	20	- 3.2
SOUTH ATLANTIC (NORTH):					NORTH DAKOTA.....	37	5.8	39	5.3
DELAWARE.....	12	6.1	13	4.3	SOUTH DAKOTA.....	28	0.8	31	- 1.4
MARYLAND.....	34	4.7	30	5.1	WEST SOUTH CENTRAL:				
VIRGINIA.....	-	5.4	-	5.1	ARKANSAS.....	-	-	-	-
WEST VIRGINIA.....	-	-	27	4.1	LOUISIANA.....	-	-	39	- 3.2
SOUTH ATLANTIC (SOUTH):					OKLAHOMA.....	-	-	-	-
FLORIDA.....	-	-	-	-	TEXAS.....	112	4.1	112	4.2
GEORGIA.....	34	5.7	35	4.1	MOUNTAIN:				
NORTH CAROLINA.....	38	4.4	32	5.4	ARIZONA.....	19	4.9	-	-
SOUTH CAROLINA.....	8	9.3	7	11.5	COLORADO.....	39	7.5	39	1.1
EAST NORTH CENTRAL:					IDAHO.....	-	-	53	0.7
ILLINOIS.....	19	7.6	21	0.2	MONTANA.....	25	8.1	28	5.4
INDIANA.....	22	6.4	24	4.1	NEVADA.....	23	3.1	23	0.6
MICHIGAN.....	-	-	-	-	NEW MEXICO.....	-	-	34	3.5
OHIO.....	17	2.4	18	3.6	UTAH.....	41	4.0	41	2.6
WISCONSIN.....	30	4.5	39	2.8	WYOMING.....	39	6.5	40	1.8
ALASKA.....	12	15.1	17	2.9	PACIFIC:				
HAWAII.....	-	-	-	-	CALIFORNIA.....	-	-	15	5.5
					OREGON.....	79	0.2	52	- 0.1
					WASHINGTON.....	7	0.0	22	2.1

NOTE: 1-RURAL MILEAGE OF EACH MAJOR TOLL ROUTE IS CONSIDERED AS ONE OR MORE STATIONS, DEPENDING ON STATES' METHOD OF REPORTING.  
 2-WHERE THE NUMBER OF STATIONS IS DASH AND THE PERCENTAGE CHANGE IS SHOWN, THE STATES PREPARED TRAFFIC ESTIMATES, GENERALLY BASED ON EXTENSIVE TRAFFIC SAMPLING SURVEYS.  
 3-WHERE THE NUMBER OF STATIONS AND THE PERCENTAGE CHANGE FOR A STATE ARE DASHES, THE STATE REPORT HAD NOT BEEN RECEIVED AT TIME OF PRINTING, OR NO COMPARABLE DATA WERE AVAILABLE.