

## Case 409 : Narrative

Case Vehicle (A): 2000 Kia	Vehicle (B): 2001 Jeep
Type: Sephia, 4-door sedan	Type: Cherokee Sport, 4-door, 4x4
Driver: 40-year-old male	Driver: 63-year-old male
CDC: 12-FDEW-3	CDC: 99-0000-0

### SITUATION

[1](#) [2](#) [3](#) On a clear day, case vehicle (A) was traveling east at an unknown speed in the eastbound lane of a two-lane asphalt road, in an urban area. The road surface was dry, it was daylight, and the speed limit was 50 mph (80 kph). Vehicle (B) was stopped facing east ahead of case vehicle (A) and was waiting for westbound traffic to clear to make a left turn onto a private dirt road. The driver of case vehicle (A) failed to stop for vehicle (B) and the front of case vehicle (A) struck the rear of vehicle (B). [4](#) After the impact, case vehicle (A) exited the south edge of the road and came to rest facing southeast. [5](#) Vehicle (B) came to rest on the north edge of the road facing northeast. The driver of case vehicle (A) left the scene on foot but was later apprehended by police. Both vehicles were towed from the scene.

### GENERAL VEHICLE DAMAGE AND ESTIMATED CRASH SEVERITIES

[6](#) The direct damage to the front of case vehicle (A) was moderate and extended 140-cm across the entire front of the vehicle, with [7](#) the majority of the damage occurring above the bumper. [8](#) The maximum frontal crush at bumper level was 24 cm and occurred at the left-front bumper corner, and the maximum crush above the bumper was 48 cm and occurred at the center of the vehicle.

[9](#) [10](#) [11](#) [12](#) [13](#) [14](#) [15](#) [16](#) Using the WinSMASH crash-reconstruction program and the average of crush profiles measured at and above the bumper for case vehicle (A), the following impact severity was estimated for the impact between the front of case vehicle (A) and rear of vehicle (B):

		Estimated Velocity Change - kph (mph)		
Vehicle	Variable	Total	Longitudinal	Latitudinal
Case Vehicle (A)	delta V	25 (16)	-25 (-16)	0 (0)

### DESCRIPTION OF DAMAGE TO CASE VEHICLE (A)

#### Exterior

[17](#) In the front, the entire bumper was pushed to the rear and the bumper cover was angled up. [18](#) The majority of the damage occurred above the bumper where the grille and engine compartment were crushed rearward [19](#) and both headlight assemblies were broken. [20](#) The hood was crushed up and to the rear, the damaged hood latch had released, [21](#) [22](#) and both hood hinges were damaged but not separated. The rear edge of the hood was elevated but it was not in contact with the windshield. [23](#) There was a

small spider-web crack in the upper-center section of the windshield from interior contact by the rearview mirror, and there were cracks radiating across the lower-left section of the windshield due to deformation of the cowl. [24](#) The right section of the windshield was cracked due to internal contact by the deploying dash-mounted airbag.

[25](#) On the left side, the fender was crumpled and pushed to the rear. [26](#) The left-side doors were undamaged and operational, the left-side glazing was intact, and there was no damage to the left A-, B-, or C-pillars. [27](#) [28](#) Both left-side wheels were undamaged and there was no change in the left wheelbase. [29](#) There were black marks on the rear section of the left quarter panel but these were not related to this crash.

[30](#) On the right side, the fender was deformed, but [31](#) there was no damage to the right A-, B-, or C-pillars, and both right-side doors were undamaged and operable. The right-side glazing was intact and there was no [32](#) damage to the right quarter panel. [33](#) [34](#) Both right-side wheels were undamaged and there was no change in the right wheelbase.

[35](#) There was no damage to the rear of case vehicle (A).

## Interior

[36](#) This vehicle was equipped with steering-wheel and dash-mounted frontal-impact airbags, which deployed during the frontal impact into the rear of vehicle (B). [37](#) In the driver seating area, there was no damage to the roof, to the roof header, or to the left A-pillar. [38](#) There was no damage to the steering-wheel rim and [39](#) there was no rotation of the steering column. [40](#) There was no damage to the steering-wheel airbag. [41](#) There was no damage to the upper or mid portions of the instrument panel [42](#) [43](#) [44](#) but there were scuffmarks on, and damage to, the knee bolster to the right and left of the steering column. [45](#) There was no damage to the floor or [46](#) to the foot controls in the driver area, and there was no damage [47](#) to the interior of the driver door.

[48](#) In the center-front area, there was no damage to the roof or to the roof header, but there was a [49](#) small spider-web crack from contact by the rearview mirror. [50](#) There was no damage to the center dashboard or to the floor-mounted console.

[51](#) In the right-front seating area, there was no damage to the roof, to the roof header, or to the right A-pillar. [52](#) There were two spider-web cracks in the right-center section of the windshield from contact by the deploying dash-mounted airbag, [53](#) but there was no damage to the dash-mounted airbag cover or [54](#) to the airbag fabric. [55](#) There was no damage to the glove box or to the surrounding dashboard. [56](#) There was no damage to the floor in the right-front seating area and there were no intrusions.

## OCCUPANT KINEMATICS AND INJURIES

[57](#) The 178-cm, 100-kg (5-ft 10-in, 220-lb) 40-year-old male driver was using the three-point belt and the [58](#) steering-wheel airbag deployed. Belt use at the time of the crash is indicated by [60](#) belt loading marks on the D-ring [62](#) and continuous loop, [61](#) loading marks on the shoulder-belt webbing, [63](#) and by the fact that the trim over the B-pillar and seatbelt retractor was pulled out. [59](#) The shoulder-belt anchor point on the B-pillar was adjusted to the highest position.

During the frontal impact, the driver moved forward into the belt restraints and airbag. He sustained an abrasion to the center of the chest from loading by the shoulder belt. [64](#) He sustained a contusion to the left knee from contact with the knee bolster, as evidenced by scuffmarks on the knee bolster to the left of

the steering column. [65](#) Scuffmarks on the knee bolster to the right of the steering column indicate that the driver may have contacted the bolster, but no knee, thigh, or hip injuries were reported.

The following table [66](#) and attached drawing summarize the injuries for the restrained driver.

Occupant: Driver	Age: 40 years	Gender: Male		
Restraints: 3-point belt, steering-wheel airbag	Stature: 178 cm (5 ft, 10 in)	Mass: 100 kg (220 lb)		
Injury Description	A.I.S.	Injury Source		
		Definite	Probable	Possible
—	—	—	—	—
Abrasion, center of chest	1	Shoulder belt	—	—
Contusion, left knee	1	Knee bolster	—	—
Maximum A.I.S. Level	1	—	—	—
Injury Severity Score	1	—	—	—

CASE NO.: 409

CASE VEHICLE: 2000 Kia

TYPE: Sephia, 4-door sedan

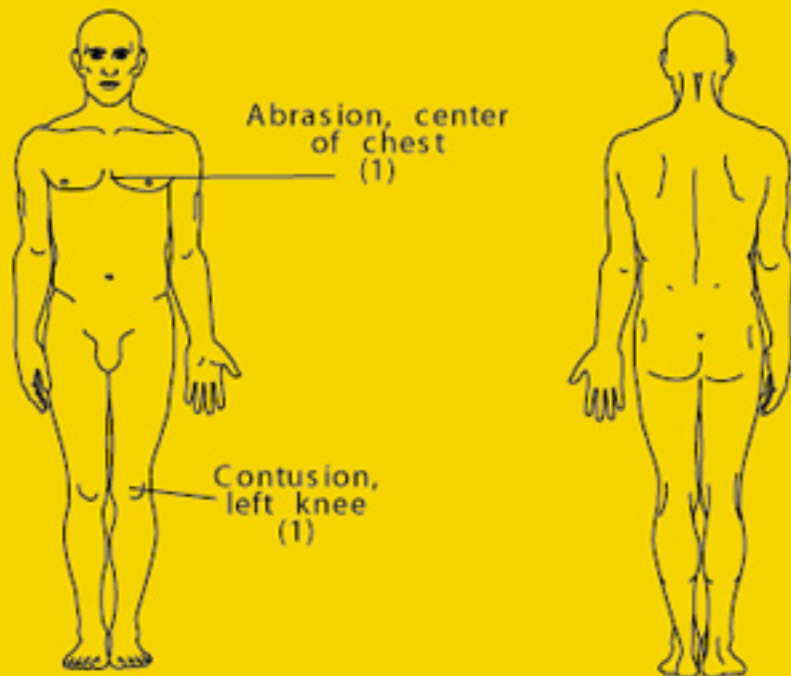
OCCUPANT: (Driver) 40-year-old male

STATURE: 178 cm (5 ft, 10 in) MASS: 100 kg (220 lb)

RESTRAINTS: 3-point belt, steering-wheel airbag

SEVERITY: MAIS - 1

ISS - 1



Case No.: 409

Case Veh. (A): 2000 Kia

Type: Sephia, 4-door sedan

Driver: 40-year-old male

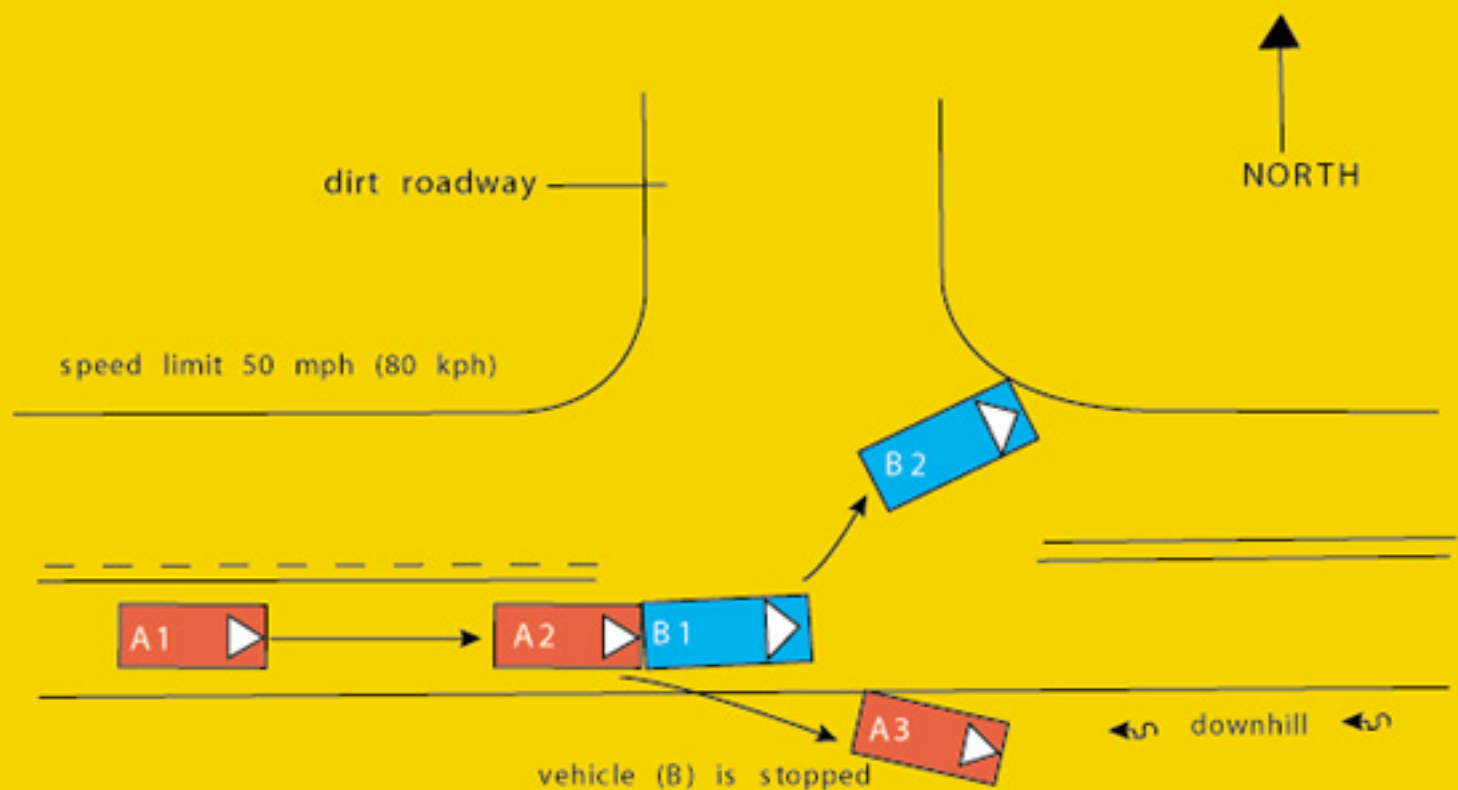
Vehicle (B): 2001 Jeep Cherokee Sport, 4-door, 4x4

Weather: Clear

Road Surface: Dry

Road Construction: Asphalt

Light Condition: Daylight



# Vehicle Report

Click on Section Name to jump directly to that Section —

- [General Conditions](#)
- [Other Vehicle](#)
- [Case Vehicle General](#)
- [Case Vehicle Damage Description](#)
- [Crash Severity](#)
- [Case Vehicle Tires & Rims](#)
- [Case Vehicle Fuel, Tank, Fire](#)
- [Case Vehicle Exterior](#)
- [Case Vehicle Steering Column/Rim](#)
- [Case Vehicle Intrusion](#)
- [Case Vehicle Airbag\(s\)](#)
- [Case Vehicle Interior](#)
- [Case Vehicle Seats](#)

---

## General Conditions

[Back to Top](#)

Variable Number and Name	Code Value	Code Description	Other Options
V206 — Urban/Rural Area	1	Urban	<a href="#">more</a>
V207 — Limited Access Highway	0	No	<a href="#">more</a>
V208 — Road Total Lanes	2	2 lanes	<a href="#">more</a>
V209 — Intersecting Road Total Lanes	2	2 lanes	<a href="#">more</a>
V210 — Road Surface Type	1	Asphalt	<a href="#">more</a>
V211 — Road Defects	0	No	<a href="#">more</a>
V212 — Construction Zone	0	No	<a href="#">more</a>
V213 — Road Alignment Vertical Plane	1	Level	<a href="#">more</a>
V214 — Road Alignment Horizontal Plane	1	Straight	<a href="#">more</a>
V215 — Surface Covering	10	Dry	<a href="#">more</a>
V216 — Visibility Limitation	0	None	<a href="#">more</a>
V217 — Visibility Obstruction	0	None	<a href="#">more</a>
V218 — Speed Limit	5	80-85 km/h .. 50 mph	<a href="#">more</a>
V219 — Precipitation Type	0	None	<a href="#">more</a>
V220 — Precipitation Rate	8	Not applicable	<a href="#">more</a>
V221 — Temperature	9	Unknown	<a href="#">more</a>

V222 — Crosswind	9	Unknown	<a href="#">more</a>
V223 — Light Conditions	1	Daylight	<a href="#">more</a>
V224 — Mechanical Malfunction Mention	0	No	<a href="#">more</a>
V225 — Case Vehicle and Object	0	No	<a href="#">more</a>
V226 — Case Vehicle Rollover	0	No	<a href="#">more</a>
V227 — Case Vehicle Ran Off Roadway	0	No	<a href="#">more</a>
V228 — Moving Case Vehicle/Contacted Moving Vehicle	0	No	<a href="#">more</a>
V229 — Case Vehicle/Contacted Stopped Vehicle	1	Yes	<a href="#">more</a>
V230 — Stopped Case Vehicle/Contactd Vehicle	0	No	<a href="#">more</a>
V231 — Total Vehicles Hit By Case Vehicle	1	1 vehicle	<a href="#">more</a>
V232 — Any Fire in Crash	0	No	<a href="#">more</a>
V233 — Max Police Severity-PAR	0	0 - No Injury	<a href="#">more</a>
V234 — Driver Alcohol Involvement	1	Had been drinking	<a href="#">more</a>
V235 — Driver Alcohol BAC	22	—	—
V236 — Driver Impairment Mention	1	Yes	<a href="#">more</a>
V237 — Driven/Towed From Scene	2	Towed Due to Damage	<a href="#">more</a>

## Other Vehicle

[Back to Top](#)

Variable Number and Name	Code Value	Code Description	Other Options
V301 — Other Vehicle VIN	1J4FF48531L5	—	—
V302 — Other Vehicle Manufacturer/Body Code	15214	—	—
V303 — Other Vehicle Manufacturer	152	Kaiser/Jeep	<a href="#">more</a>
V304 — Other Vehicle Body Code	14	Short wheelbase utility vehicle (Jeep, Bronco)	<a href="#">more</a>
V305 — Other Vehicle Make/Model	3405	Cherokee	<a href="#">more</a>
V306 — Other Vehicle Model Year	2001	—	—
V307 — Other Vehicle Mass	001522 kg	—	—
V308 — Other Vehicle Number	0	No separate report	<a href="#">more</a>
V309 — Other Vehicle Number of Occupants	01	—	—
V310 — Other Vehicle Traveling Speed	000 kph	Parked or stopped	<a href="#">more</a>

V311 — Highest Police Injury Severity	1	C - Possible Injury	<a href="#">more</a>
V312 — Other Vehicle Type	14	Small utility (wheelbase <107", e.g. Jeep)	<a href="#">more</a>
V313 — Other Vehicle Wheelbase (cm)	258 cm	—	—
V314 — Average Track Width	147 cm	—	—
V315 — Overall Length	426 cm	—	—
V316 — Overall Width (OAW)	176 cm	—	—
V317 — Front Overhang (FOH)	079 cm	—	—
V318 — Rear Overhang (ROH)	094 cm	—	—
V319 — Undeformed End Width (UEW)	160 cm	—	—
V320 — Engine Displacement	5.9 l	—	—
V321 — Engine: Number of Cylinders	08	—	—
V322 — Direct Damage Length (DDL)	999	Unknown	<a href="#">more</a>
V323 — Front-End Overlap % (FEO)	99	Missing or Not applicable	<a href="#">more</a>
V324 — Vehicle Overlap % (VOL)	99	Missing or Not applicable	<a href="#">more</a>

## Case Vehicle General

[Back to Top](#)

Variable Number and Name	Code Value	Code Description	Other Options
V401 — VIN	KNAFB1212Y58	—	—
V402 — Manufacturer/Body Code	93427	—	—
V403 — Vehicle Manufacturer	934	—	—
V404 — Vehicle Body Code	27	—	—
V405 — Make/Model Code	4401	—	—
V406 — Model Year	2000	—	—
V407 — Vehicle Mass	001124 kg	—	—
V408 — Odometer Reading	011439 miles	—	—
V409 — Number of Occupants	01	—	—
V410 — Traveling Speed	999	Unknown	<a href="#">more</a>
V411 — Body Type	14	4-door sedan	<a href="#">more</a>
V412 — Stolen Vehicle	8	Not currently collected	<a href="#">more</a>
V413 — Body Structure	2	Unitized	<a href="#">more</a>
V414 — Transmission Type	2	Manual	<a href="#">more</a>



V415 — Transmission Lever Location	2	Console	<a href="#">more</a>
V416 — Steering	1	Power	<a href="#">more</a>
V417 — Brakes	1	Power	<a href="#">more</a>
V418 — Brake Type	2	Disc - front wheels	<a href="#">more</a>
V419 — Brake Anti-lock Device	1	Two-wheel	<a href="#">more</a>
V420 — Air Conditioning in Vehicle	8	Not currently collected	<a href="#">more</a>
V421 — Drive Type	2	Front wheel	<a href="#">more</a>
V422 — Dual Rear Wheels	0	No	<a href="#">more</a>
V423 — Original Restraint System Type	3	Airbag	<a href="#">more</a>
V424 — Equipped With Roll Bar	0	No	<a href="#">more</a>
V425 — Roof Type	1	Solid	<a href="#">more</a>
V426 — Wheelbase	256 cm	—	—
V427 — Anti-lacerative Glass	0	None	<a href="#">more</a>
V428 — Average Track Width	145 cm	—	—
V429 — Overall Length	444 cm	—	—
V430 — Overall Width (OAW)	170 cm	—	—
V431 — Front Overhang	089 cm	—	—
V432 — Rear Overhang	099 cm	—	—
V433 — Undeformed End Width (UEW)	140 cm	—	—
V434 — Engine Displacement	1.8 l	—	—
V435 — Engine: Number of Cylinders	04	—	—
V436 — Direct Damage Length (DDL)	140 cm	—	—
V437 — Front End Overlap % (FEO)	98	98% or more	<a href="#">more</a>
V438 — Vehicle Overlap % (VOL)	98	98% or more	<a href="#">more</a>

## Case Vehicle

### Damage Description

[Back to Top](#)

Variable Number and Name	Code Value	Code Description	Other Options
V501 — Maximum Crush - Front	048 cm	—	—
V502 — Maximum Crush - Right Side	000 cm	No crush (or less than 1 cm.)	<a href="#">more</a>
V503 — Maximum Crush - Rear	000 cm	No crush (or less than 1 cm.)	<a href="#">more</a>
V504 — Maximum Crush - Left Side	000 cm	No crush (or less than 1 cm.)	<a href="#">more</a>

V505 — Maximum Crush - Roof	000 cm	No crush (or less than 1 cm.)	<a href="#">more</a>
V506 — Maximum Crush - Other	000 cm	No crush (or less than 1 cm.)	<a href="#">more</a>
V507 — Are Events In Chronological Order	1	Yes	<a href="#">more</a>
V508 — Event 1 Impact Location	1	On Roadway	<a href="#">more</a>
V509 — Event 1 Impact Configuration	14	FRONT of case veh - REAR of contacted Vehicle	<a href="#">more</a>
V510 — Event 1 Object/Vehicle Contacted	14	Small utility (wheelbase <107", e.g. Jeep)	<a href="#">more</a>
V511 — Event 2 Impact Location	8	No 2nd event	<a href="#">more</a>
V512 — Event 2 Impact Configuration	88	No 2nd event	<a href="#">more</a>
V513 — Event 2 Object/Vehicle Contacted	00	No object/vehicle contacted	<a href="#">more</a>
V514 — Event 3 Impact Location	8	No 3rd event	<a href="#">more</a>
V515 — Event 3 Impact Configuration	88	No 3rd event	<a href="#">more</a>
V516 — Event 3 Object/Vehicle Contacted	00	No object/vehicle contacted	<a href="#">more</a>
V517 — Event 4 Impact Location	8	No 4th event	<a href="#">more</a>
V518 — Event 4 Impact Configuration	88	No 4th event	<a href="#">more</a>
V519 — Event 4 Object/Vehicle Contacted	00	No object/vehicle contacted	<a href="#">more</a>
V520 — Event 5 Impact Location	8	No 5th event	<a href="#">more</a>
V521 — Event 5 Impact Configuration	88	No 5th event	<a href="#">more</a>
V522 — Event 5 Object/Vehicle Contacted	00	No object/vehicle contacted	<a href="#">more</a>
V523 — Event 6 Impact Location	8	No 6th event	<a href="#">more</a>
V524 — Event 6 Impact Configuration	88	No 6th event	<a href="#">more</a>
V525 — Event 6 Object/Vehicle Contacted	00	No object/vehicle contacted	<a href="#">more</a>
V526 — Event 7 Impact On Road	8	No 7th event	<a href="#">more</a>
V527 — Event 7 Impact Configuration	88	No 7th event	<a href="#">more</a>
V528 — Event 7 Object/Vehicle Contacted	00	No object/vehicle contacted	<a href="#">more</a>
V529 — Primary CDC Case Vehicle -event Number	1	Event 1	<a href="#">more</a>
V530 — Primary CDC Case Vehicle	999		

- impact speed		Unknown	<a href="#">more</a>
V531 — Primary CDC Case Vehicle - Estimated By	1	Investigator	<a href="#">more</a>
V532 — Primary CDC Case Vehicle -crush	048	—	—
V533 — Primary CDC Case Vehicle -clock #1	12	12 o'clock	<a href="#">more</a>
V534 — Primary CDC Case Vehicle letter 1 #1	06	F - Front	<a href="#">more</a>
V535 — Primary CDC Case Vehicle letter 2 #1	04	D - Distributed (Side or End)	<a href="#">more</a>
V536 — Primary CDC Case Vehicle letter 3 #1	05	E - Everything below belt line	<a href="#">more</a>
V537 — Primary CDC Case Vehicle letter 4 #1	23	W - Wide impact area	<a href="#">more</a>
V538 — Primary CDC Case Vehicle Extent #1	03	Extent 3	<a href="#">more</a>
V539 — Primary CDC Case Vehicle -CDC #1	12FDEW3	—	—
V541 — Primary CDC Case Vehicle letter 1 #2	00	Missing Data/Not applicable	<a href="#">more</a>
V542 — Primary CDC Case Vehicle letter 2 #2	00	Missing Data/Not applicable	<a href="#">more</a>
V543 — Primary CDC Case Vehicle letter 3 #2	00	Missing Data/Not applicable	<a href="#">more</a>
V544 — Primary CDC Case Vehicle letter 4 #2	00	Missing Data/Not applicable	<a href="#">more</a>
V545 — Primary CDC Case Vehicle Extent #2	00	Missing Data/Not applicable	<a href="#">more</a>
V546 — Primary CDC Case Vehicle -CDC #2	9800000	—	—
V547 — Primary CDC Contacted Vehicle - Impact Speed	999	Unknown	<a href="#">more</a>
V548 — Primary CDC Contacted Vehicle - Estimated By	1	Investigator	<a href="#">more</a>
V549 — Primary CDC Contacted Vehicle -crush	999	Unknown	<a href="#">more</a>
V550 — Primary CDC Contacted Vehicle -clock #1	99	Unknown or no damage	<a href="#">more</a>
V551 — Primary CDC Contacted Vehicle letter 1 #1	00	Missing Data/Not applicable	<a href="#">more</a>
V552 — Primary CDC Contacted Vehicle letter 2 #1	00	Missing Data/Not applicable	<a href="#">more</a>

V553 — Primary CDC Contacted Vehicle letter 3 #1	00	Missing Data/Not applicable	<a href="#">more</a>
V554 — Primary CDC Contacted Vehicle letter 4 #1	00	Missing Data/Not applicable	<a href="#">more</a>
V555 — Primary CDC Contacted Vehicle Extent #1	00	Missing Data/Not applicable	<a href="#">more</a>
V556 — Primary CDC Contacted Vehicle -CDC #1	9900000	—	—
V558 — Primary CDC Contacted Vehicle letter 1 #2	00	Missing Data/Not applicable	<a href="#">more</a>
V559 — Primary CDC Contacted Vehicle letter 2 #2	00	Missing Data/Not applicable	<a href="#">more</a>
V560 — Primary CDC Contacted Vehicle letter 3 #2	00	Missing Data/Not applicable	<a href="#">more</a>
V561 — Primary CDC Contacted Vehicle letter 4 #2	00	Missing Data/Not applicable	<a href="#">more</a>
V562 — Primary CDC Contacted Vehicle Extent #2	00	Missing Data/Not applicable	<a href="#">more</a>
V563 — Primary CDC Contacted Vehicle -CDC #2	9900000	—	—
V564 — Secondary CDC Case Vehicle - Event No	8	Not applicable	<a href="#">more</a>
V565 — Secondary CDC Case Vehicle - Impact Speed	998	Not Applicable	<a href="#">more</a>
V566 — Secondary CDC Case Vehicle - Estimated By	8	Not applicable (no vehicle/no impact)	<a href="#">more</a>
V567 — Secondary CDC Case Vehicle -crush	998	Not Applicable	<a href="#">more</a>
V568 — Secondary CDC Case Vehicle -clock #1	98	Not Applicable	<a href="#">more</a>
V569 — Secondary CDC Case Vehicle letter 1 #1	00	Missing Data/Not applicable	<a href="#">more</a>
V570 — Secondary CDC Case Vehicle letter 2 #1	00	Missing Data/Not applicable	<a href="#">more</a>
V571 — Secondary CDC Case Vehicle letter 3 #1	00	Missing Data/Not applicable	<a href="#">more</a>
V572 — Secondary CDC Case Vehicle letter 4 #1	00	Missing Data/Not applicable	<a href="#">more</a>
V573 — Secondary CDC Case Vehicle Extent #1	00	Missing Data/Not applicable	<a href="#">more</a>
V574 — Secondary CDC Case Vehicle -CDC #1	9800000	—	—
V576 — Secondary CDC Case	00	Missing Data/Not applicable	<a href="#">more</a>

Vehicle letter 1 #2			
V577 — Secondary CDC Case Vehicle letter 2 #2	00	Missing Data/Not applicable	<a href="#">more</a>
V578 — Secondary CDC Case Vehicle letter 3 #2	00	Missing Data/Not applicable	<a href="#">more</a>
V579 — Secondary CDC Case Vehicle letter 4 #2	00	Missing Data/Not applicable	<a href="#">more</a>
V580 — Secondary CDC Case Vehicle Extent #2	00	Missing Data/Not applicable	<a href="#">more</a>
V581 — Secondary CDC Case Vehicle -CDC #2	9800000	—	—
V582 — Secondary CDC Contacted Vehicle - Impact Speed	998	Not Applicable	<a href="#">more</a>
V583 — Secondary CDC Contacted Vehicle - Estimated By	8	Not applicable (no vehicle/no impact)	<a href="#">more</a>
V584 — Secondary CDC Contacted Vehicle -crush	998	Not Applicable	<a href="#">more</a>
V585 — Secondary CDC Contacted Vehicle -clock #1	98	Not Applicable	<a href="#">more</a>
V586 — Secondary CDC Contacted Vehicle letter 1 #1	00	Missing Data/Not applicable	<a href="#">more</a>
V587 — Secondary CDC Contacted Vehicle letter 2 #1	00	Missing Data/Not applicable	<a href="#">more</a>
V588 — Secondary CDC Contacted Vehicle letter 3 #1	00	Missing Data/Not applicable	<a href="#">more</a>
V589 — Secondary CDC Contacted Vehicle letter 4 #1	00	Missing Data/Not applicable	<a href="#">more</a>
V590 — Secondary CDC Contacted Vehicle Extent #1	00	Missing Data/Not applicable	<a href="#">more</a>
V591 — Secondary CDC Contacted Vehicle -CDC #1	9800000	—	—
V593 — Secondary CDC Contacted Vehicle letter 1 #2	00	Missing Data/Not applicable	<a href="#">more</a>
V594 — Secondary CDC Contacted Vehicle letter 2 #2	00	Missing Data/Not applicable	<a href="#">more</a>
V595 — Secondary CDC Contacted Vehicle letter 3 #2	00	Missing Data/Not applicable	<a href="#">more</a>
V596 — Secondary CDC Contacted Vehicle letter 4 #2	00	Missing Data/Not applicable	<a href="#">more</a>
V597 — Secondary CDC Contacted Vehicle Extent #2	00	Missing Data/Not applicable	<a href="#">more</a>
V598 — Secondary CDC Contacted Vehicle -CDC #2	9800000	—	—

## Crash Severity

[Back to Top](#)

Variable Number and Name	Code Value	Code Description	Other Options
V601 — Case Vehicle Primary Impact Number	1	—	—
V602 — Primary Impact Total Delta-V	025 kph	—	—
V603 — Primary Case Vehicle Reconstructed Longitudinal Delta-V	-025 kph	—	—
V604 — Primary Case Vehicle Reconstructed Lateral Delta-V	0000 kph	—	—
V605 — Primary Case Vehicle Reconstructed Crush Energy	0019 kJ	—	—
V606 — Primary Impact Case Vehicle - reconstruction	22	Reconstructed, moderate confidence level	<a href="#">more</a>
V607 — Primary Case Vehicle Reconstruction Mode	2	CDC & detailed damage	<a href="#">more</a>
V608 — Primary Contacted Vehicle Reconstructed	019 kph	—	—

Total Delta-V			
V609 — Primary Contacted Vehicle Reconstructed Longitudinal Delta-V	-019 kph	—	—
V610 — Primary Contacted Vehicle Reconstructed Lateral Delta- V	0000 kph	—	—
V611 — Primary Contacted Vehicle Reconstructed Crush Energy	0035 kJ	—	—
V612 — Case Vehicle Secondary Impact Number	8	—	—
V613 — Secondary Case Vehicle Reconstructed Total Delta-V	888	N/A	<a href="#">more</a>
V614 — Secondary Case Vehicle Reconstructed Longitudinal Delta-V	8888	—	—
V615 — Secondary Case Vehicle Reconstructed Lateral Delta- V	8888	—	—
V616 — Secondary Case Vehicle Reconstructed Crush Energy	8888	—	—

V617 — Secondary Case Vehicle Reconstruction Note	88	—	—
V618 — Secondary Case Vehicle Reconstruction Mode	8	Not applicable	<a href="#">more</a>
V619 — Secondary Contacted Vehicle Reconstructed Total Delta-V	888	N/A	<a href="#">more</a>
V620 — Secondary Contacted Vehicle Reconstructed Longitudinal Delta-V	8888	—	—
V621 — Secondary Contacted Vehicle Reconstructed Lateral Delta- V	8888	—	—
V622 — Secondary Contacted Vehicle Reconstructed Crush Energy	8888	—	—
V623 — Case Vehicle Primary Impact Number	1	—	—
V624 — Primary Case Vehicle Reconstructed Total EBS	025 kph	—	—
V625 — Primary Case	-025 kph		



Vehicle Reconstructed Longitudinal EBS		—	—
V626 — Primary Case Vehicle Reconstructed Lateral EBS	0000 kph	—	—
V627 — Primary Case Vehicle Reconstructed Crush Energy	0019 kJ	—	—
V628 — Primary Case Vehicle Reconstruction Note	22	Reconstructed, moderate confidence level	<a href="#">more</a>
V629 — Primary Case Vehicle Reconstruction Mode	2	CDC & detailed damage	<a href="#">more</a>
V630 — Primary Contacted Vehicle Reconstruction Total EBS	019 kph	—	—
V631 — Primary Contacted Vehicle Reconstruction Longitudinal EBS	-019 kph	—	—
V632 — Primary Contacted Vehicle Reconstruction Lateral EBS	0000 kph	—	—
V633 — Primary Contacted Vehicle Reconstruction	0035 kJ	—	—

Crush Energy			
V634 — Case Vehicle Secondary Impact Number	8	Not applicable	<a href="#">more</a>
V635 — Secondary Case Vehicle Reconstruction Total EBS	888	N/A	<a href="#">more</a>
V636 — Secondary Case Vehicle Reconstruction Longitudinal EBS	8888	—	—
V637 — Secondary Case Vehicle Reconstruction Lateral EBS	8888	—	—
V638 — Secondary Case Vehicle Reconstruction Crush Energy	8888	—	—
V639 — Secondary Case Vehicle Reconstruction Note	88	—	—
V640 — Secondary Case Vehicle Reconstruction Mode	8	Not applicable	<a href="#">more</a>
V641 — Secondary Contacted Vehicle Reconstruction Total EBS	888	N/A	<a href="#">more</a>
V642 — Secondary Contacted Vehicle	8888	—	—

Reconstruction Longitudinal EBS			
V643 — Secondary Contacted Vehicle Reconstruction Lateral EBS	8888	—	—
V644 — Secondary Contacted Vehicle Reconstruction Crush Energy	8888	—	—
V645 — Case Vehicle Reconstructed Impact Number	1	—	—
V646 — Case Vehicle Impact 1 Plane	5	Other	<a href="#">more</a>
V647 — Case Vehicle Impact 1 Direct Damage Length [DDL]	140 cm	—	—
V648 — Case Vehicle Impact 1 Max Crush	048 cm	—	—
V649 — Case Vehicle Impact 1 Field-L	140 cm	—	—
V650 — Case Vehicle Impact 1 C1	024 cm	—	—
V651 — Case Vehicle Impact 1 C2	026 cm	—	—
V652 — Case Vehicle Impact 1 C3	029 cm	—	—
V653 — Case	027 cm		

Vehicle Impact 1 C4		—	—
V654 — Case Vehicle Impact 1 C5	022 cm	—	—
V655 — Case Vehicle Impact 1 C6	023 cm	—	—
V656 — Case Vehicle Impact 1 +/- D	0000 cm	—	—
V657 — Case Vehicle Reconstructed Impact Number	2	—	—
V658 — Case Vehicle Impact 2 Plane	8	Not applicable	<a href="#">more</a>
V659 — Case Vehicle Impact 2 Direct Damage Length [DDL]	998	Not applicable	<a href="#">more</a>
V660 — Case Vehicle Impact 2 Max Crush	998	Not applicable	<a href="#">more</a>
V661 — Case Vehicle Impact 2 Field-L	998	Not applicable	<a href="#">more</a>
V662 — Case Vehicle Impact 2 C1	998	Not applicable	<a href="#">more</a>
V663 — Case Vehicle Impact 2 C2	998	Not applicable	<a href="#">more</a>
V664 — Case Vehicle Impact 2 C3	998	Not applicable	<a href="#">more</a>
V665 — Case Vehicle Impact 2 C4	998	Not applicable	<a href="#">more</a>
V666 — Case	998		

Vehicle Impact 2 C5		Not applicable	<a href="#">more</a>
V667 — Case Vehicle Impact 2 C6	998	Not applicable	<a href="#">more</a>
V668 — Case Vehicle Impact 2 +/- D	9998	—	—
V669 — Other Vehicle Reconstructed Impact Number	1	—	—
V670 — Other Vehicle Impact 1 Plane	9	Unknown	<a href="#">more</a>
V671 — Other Vehicle Impact 1 Direct Damage Length [DDL]	999	Unknown	<a href="#">more</a>
V672 — Other Vehicle Impact 1 Max Crush	999	Unknown	<a href="#">more</a>
V673 — Other Vehicle Impact 1 Field-L	999	Unknown	<a href="#">more</a>
V674 — Other Vehicle Impact 1 C1	999	Unknown	<a href="#">more</a>
V675 — Other Vehicle Impact 1 C2	999	Unknown	<a href="#">more</a>
V676 — Other Vehicle Impact 1 C3	999	Unknown	<a href="#">more</a>
V677 — Other Vehicle Impact 1 C4	999	Unknown	<a href="#">more</a>
V678 — Other Vehicle Impact 1 C5	999	Unknown	<a href="#">more</a>
V679 — Other	999		

Vehicle Impact 1 C6		Unknown	<a href="#">more</a>
V680 — Other Vehicle Impact 1 +/- D	0999 cm	—	—
V681 — Other Vehicle Reconstructed Impact Number	2	—	—
V682 — Other Vehicle Impact 2 Plane	8	Not applicable	<a href="#">more</a>
V683 — Other Vehicle Impact 2 Direct Damage Length [DDL]	998	Not applicable	<a href="#">more</a>
V684 — Other Vehicle Impact 2 Max Crush	998	Not applicable	<a href="#">more</a>
V685 — Other Vehicle Impact 2 Field-L	998	Not applicable	<a href="#">more</a>
V686 — Other Vehicle Impact 2 C1	998	Not applicable	<a href="#">more</a>
V687 — Other Vehicle Impact 2 C2	998	Not applicable	<a href="#">more</a>
V688 — Other Vehicle Impact 2 C3	998	Not applicable	<a href="#">more</a>
V689 — Other Vehicle Impact 2 C4	998	Not applicable	<a href="#">more</a>
V690 — Other Vehicle Impact 2 C5	998	Not applicable	<a href="#">more</a>
V691 — Other Vehicle Impact 2 C6	998	Not applicable	<a href="#">more</a>
V692 — Other	9998		

Vehicle Impact 2 +/- D		—	—
---------------------------	--	---	---

### Case Vehicle Tires & Rims

[Back to Top](#)

Variable Number and Name	Code Value	Code Description	Other Options
V701 — Left Front Wheel Damaged	0	No	<a href="#">more</a>
V702 — Right Front Wheel Damaged	0	No	<a href="#">more</a>
V703 — Right Rear Wheel Damaged	0	No	<a href="#">more</a>
V704 — Left Rear Wheel Damaged	0	No	<a href="#">more</a>
V705 — Left Front Tire Tread Type	4	All Weather	<a href="#">more</a>
V706 — Right Front Tire Tread Type	4	All Weather	<a href="#">more</a>
V707 — Right Rear Tire Tread Type	4	All Weather	<a href="#">more</a>
V708 — Left Rear Tire Tread Type	4	All Weather	<a href="#">more</a>
V709 — Left Front Carcass Construction	3	Radial	<a href="#">more</a>
V710 — Right Front Carcass Construction	3	Radial	<a href="#">more</a>
V711 — Right Rear Carcass Construction	3	Radial	<a href="#">more</a>
V712 — Left Rear Carcass Construction	3	Radial	<a href="#">more</a>
V717 — Left Front Tire Size	P18565R14	—	—
V718 — Right Front Tire Size	P18565R14	—	—
V719 — Right Rear Tire Size	P18565R14	—	—
V720 — Left Rear Tire Size	P18565R14	—	—

### Case Vehicle Fuel, Tank, Fire

[Back to Top](#)

Variable Number and Name	Code Value	Code Description	Other Options
V801 — Propulsive Fuel Type	1	Gasoline	<a href="#">more</a>
V802 — Main Tank Location	322	Within frame/centered laterally - within vertically	<a href="#">more</a>

V803 — Main Filler Cap Location	113	Left of frame laterally - above vertically	<a href="#">more</a>
V804 — Main Tank Material	9	Unknown	<a href="#">more</a>
V805 — Aux Tank Type	8	Not applicable (not equipped)	<a href="#">more</a>
V806 — Aux Tank Location	888	Not applicable (not equipped)	<a href="#">more</a>
V807 — Aux Filler Cap Location	888	Not applicable (not equipped)	<a href="#">more</a>
V808 — Aux Tank Material	8	Not applicable	<a href="#">more</a>
V901 — Fuel Leakage From Crash	0	No	<a href="#">more</a>
V1001 — Fire In Or On Case Vehicle	0	No	<a href="#">more</a>



## Case Vehicle Exterior

[Back to Top](#)

Variable Number and Name	Code Value	Code Description	Other Options
V1101 — Hood Latch Released	1	Yes	<a href="#">more</a>
V1102 — Hood Latch Damaged	1	Yes	<a href="#">more</a>
V1103 — Hood Latch Jammed	0	No	<a href="#">more</a>
V1104 — Left Hood Hinge Damaged	1	Yes	<a href="#">more</a>
V1105 — Left Hood Hinge Separated	0	No	<a href="#">more</a>
V1106 — Right Hood Hinge Damaged	1	Yes	<a href="#">more</a>
V1107 — Right Hood Hinge Separated	0	No	<a href="#">more</a>
V1108 — Hood Remained On Vehicle	1	Yes	<a href="#">more</a>
V1109 — Rear Hood Edge Elevated	1	Yes	<a href="#">more</a>
V1110 — Edge Contacted Windshield	0	No	<a href="#">more</a>
V1111 — Edge Penetrated Windshield	8	Not applicable	<a href="#">more</a>
V1112 — Hood Latch Location	1	Front of Vehicle	<a href="#">more</a>
V1113 — Eng/Transmissn Mount Separation	0	No	<a href="#">more</a>
V1114 — Steerng Column Flex Coupling	9	Unknown if equipped	<a href="#">more</a>
V1115 — Steerng Column Coupling Damaged	9	Unknown	<a href="#">more</a>
V1116 — Steerng Column Coupling Separated	9	Unknown	<a href="#">more</a>
V1117 — Eng Comp Telescopng Unit	88	Not collected	<a href="#">more</a>
V1118 — Comp Orig/Telescopd Diff	888	Not collected	<a href="#">more</a>
V1119 — Left Side Body Mount Separation	8	Not applicable (unitized)	<a href="#">more</a>



V1120 — Upper Left A-pillar Separation	0	No	<a href="#">more</a>
V1121 — Lower Left A-pillar Separation	0	No	<a href="#">more</a>
V1122 — Upper Left B-pillar Separation	0	No	<a href="#">more</a>
V1123 — Lower Left B-pillar Separation	0	No	<a href="#">more</a>
V1124 — Upper Left C-pillar Separation	0	No	<a href="#">more</a>
V1125 — Lower Left C-pillar Separation	0	No	<a href="#">more</a>
V1126 — Upper Left D-pillar Separation	8	Not applicable (not equipped)	<a href="#">more</a>
V1127 — Lower Left D-pillar Separation	8	Not applicable (not equipped)	<a href="#">more</a>
V1128 — Left Front Door Opening Cause	0	Door did not open	<a href="#">more</a>
V1129 — Left Rear Door Opening Cause	0	Door did not open	<a href="#">more</a>
V1130 — Left Front Door Jammed Closed	0	No	<a href="#">more</a>
V1131 — Left Rear Door Jammed Closed	0	No	<a href="#">more</a>
V1132 — Rear Door Type	0	No door (includes pickups)	<a href="#">more</a>
V1133 — Rear Door Opening Cause	8	Not applicable (no rear door)	<a href="#">more</a>
V1134 — Rear Door Jammed Closed	8	Not applicable (no rear door)	<a href="#">more</a>
V1135 — Luggage Partition Damagd	0	No	<a href="#">more</a>
V1136 — Spare Tire Status	8	Not collected	<a href="#">more</a>
V1137 — Trailer Hitch Type	0	No hitch	<a href="#">more</a>
V1138 — Trailer Type	0	No trailer	<a href="#">more</a>
V1139 — Right Side Body Mount Separation	8	Not applicable (unitized)	<a href="#">more</a>
V1140 — Upper Right A-pillar Separation	0	No	<a href="#">more</a>
V1141 — Lower Right A-pillar Separation	0	No	<a href="#">more</a>
V1142 — Upper Right B-pillar Separation	0	No	<a href="#">more</a>
V1143 — Lower Right B-pillar Separation	0	No	<a href="#">more</a>
V1144 — Upper Right C-pillar	0	No	<a href="#">more</a>

Separation			
V1145 — Lower Right C-pillar Separation	0	No	<a href="#">more</a>
V1146 — Upper Right D-pillar Separation	8	Not applicable (not equipped)	<a href="#">more</a>
V1147 — Lower Right D-pillar Separation	8	Not applicable (not equipped)	<a href="#">more</a>
V1148 — Right Front Door Opening Cause	00	Door did not open	<a href="#">more</a>
V1149 — Right Rear Door Opening Cause	00	Door did not open	<a href="#">more</a>
V1150 — Right Front Door Jammed Closed	0	No	<a href="#">more</a>
V1151 — Right Rear Door Jammed Closed	0	No	<a href="#">more</a>
V1152 — Van Rear Door Type	8	Not applicable (not a van)	<a href="#">more</a>
V1153 — Windshield Cracked		Yes	<a href="#">more</a>
V1154 — Windshield Broken	0	No	<a href="#">more</a>
V1155 — Windshield Cracked or Broken by Occupant	0	No	<a href="#">more</a>
V1156 — Bond Separation Extent	0	None	<a href="#">more</a>
V1157 — Windshield Code		—	—
V1158 — Did Sun/T Roof Open	8	Not Applicable	<a href="#">more</a>

**Case Vehicle  
Steering  
Column/Rim**

[Back to Top](#)

Variable Number and Name	Code Value	Code Description	Other Options
V1201 — Steering Wheel Rim Damage	0	None	<a href="#">more</a>
V1202 — Number of Steering Wheel Spokes	4	4 spokes	<a href="#">more</a>

V1203 — Steering Wheel Spoke Damage	0	None	<a href="#">more</a>
V1204 — Column Tilt Feature	0	Not equipped	<a href="#">more</a>
V1205 — Column Swing-away Feature	0	Not equipped	<a href="#">more</a>
V1206 — Column Telescoping Feature	0	Not equipped	<a href="#">more</a>
V1207 — Wheel Energy Absorb Device	8	Not collected	<a href="#">more</a>
V1208 — Wheel Ea Orig/Damaged Diff	888	Not collected	<a href="#">more</a>
V1209 — Column Energy Absorb Device	88	Not collected	<a href="#">more</a>
V1210 — Column Ea Orig/Comprss Diff	888	Not collected	<a href="#">more</a>
V1211 — Shear Capsule Separation	888	Not collected	<a href="#">more</a>
V1212 — Column Vertical Rotation	0	No apparent rotation	<a href="#">more</a>
V1213 — Column Lateral Rotation	0	No apparent rotation	<a href="#">more</a>
V1214 — Steering Wheel Hub Damage	0	None	<a href="#">more</a>

## Case Vehicle Intrusion



Click for intrusion figures

[Back to Top](#)

Variable Number and Name	Code Value	Code Description	Other Options
V1301 — Occupant Compartment Intrusion	0	No	<a href="#">more</a>
V1302 — Was Intrusion Catastrophic	8	Not applicable	<a href="#">more</a>
V1303 — Intrusion Number 01	00	No Intrusion, None	<a href="#">more</a>
V1304 — Intrusion 01 Occupant Space Number	00	No Intrusion, None	<a href="#">more</a>
V1305 — Intrusion 01 Intruding Object	00	No Intrusion, None	<a href="#">more</a>
V1306 — Intrusion 01 Assoc Event Number	0	No Intrusion, None	<a href="#">more</a>
V1307 — Intrusion 01 Max Intrusion X-axis	00 cm	0 cm or No Intrusion	<a href="#">more</a>
V1308 — Intrusion 01 Max Intrusion Y-axis	00 cm	0 cm or No Intrusion	<a href="#">more</a>
V1309 — Intrusion 01 Max Intrusion Z-axis	00 cm	0 cm or No Intrusion	<a href="#">more</a>

V1310 — Intrusion 01 Occupant Number	00	No contact or no intrusion	<a href="#">more</a>
V1311 — Intrusion 01 Injury Number	00	No injury or no intrusion	<a href="#">more</a>
V1312 — Intrusion 01 Occupant Number	00	No contact or no intrusion	<a href="#">more</a>
V1313 — Intrusion 01 Injury Number	99	Contact, injury unknown or data not collected	<a href="#">more</a>
V1314 — Intrusion Number 02	00	No Intrusion, None	<a href="#">more</a>
V1315 — Intrusion 02 Occupant Space Number	00	No Intrusion, None	<a href="#">more</a>
V1316 — Intrusion 02 Intruding Object	00	No Intrusion, None	<a href="#">more</a>
V1317 — Intrusion 02 Assoc Event Number	0	No Intrusion, None	<a href="#">more</a>
V1318 — Intrusion 02 Max Intrusion X-axis	00 cm	0 cm or No Intrusion	<a href="#">more</a>
V1319 — Intrusion 02 Max Intrusion Y-axis	00 cm	0 cm or No Intrusion	<a href="#">more</a>
V1320 — Intrusion 02 Max Intrusion Z-axis	00 cm	0 cm or No Intrusion	<a href="#">more</a>
V1321 — Intrusion 02 Occupant Number	00	No contact or no intrusion	<a href="#">more</a>
V1322 — Intrusion 02 Injury Number	00	No injury or no intrusion	<a href="#">more</a>
V1323 — Intrusion 02 Occupant Number	00	No contact or no intrusion	<a href="#">more</a>
V1324 — Intrusion 02 Injury Number	99	Contact, injury unknown or data not collected	<a href="#">more</a>
V1325 — Intrusion Number 03	00	No Intrusion, None	<a href="#">more</a>
V1326 — Intrusion 03 Occupant Space Number	00	No Intrusion, None	<a href="#">more</a>
V1327 — Intrusion 03 Intruding Object	00	No Intrusion, None	<a href="#">more</a>
V1328 — Intrusion 03 Assoc Event Number	0	No Intrusion, None	<a href="#">more</a>
V1329 — Intrusion 03 Max Intrusion X-axis	00 cm	0 cm or No Intrusion	<a href="#">more</a>
V1330 — Intrusion 03 Max Intrusion Y-axis	00 cm	0 cm or No Intrusion	<a href="#">more</a>
V1331 — Intrusion 03 Max Intrusion Z-axis	00 cm	0 cm or No Intrusion	<a href="#">more</a>
V1332 — Intrusion 03 Occupant Number	00	No contact or no intrusion	<a href="#">more</a>
V1333 — Intrusion 03 Injury Number	00	No injury or no intrusion	<a href="#">more</a>

V1334 — Intrusion 03 Occupant Number	00	No contact or no intrusion	<a href="#">more</a>
V1335 — Intrusion 03 Injury Number	99	Contact, injury unknown or data not collected	<a href="#">more</a>
V1336 — Intrusion Number 04	00	No Intrusion, None	<a href="#">more</a>
V1337 — Intrusion 04 Occupant Space Number	00	No Intrusion, None	<a href="#">more</a>
V1338 — Intrusion 04 Intruding Object	00	No Intrusion, None	<a href="#">more</a>
V1339 — Intrusion 04 Assoc Event Number	0	No Intrusion, None	<a href="#">more</a>
V1340 — Intrusion 04 Max Intrusion X-axis	00 cm	0 cm or No Intrusion	<a href="#">more</a>
V1341 — Intrusion 04 Max Intrusion Y-axis	00 cm	0 cm or No Intrusion	<a href="#">more</a>
V1342 — Intrusion 04 Max Intrusion Z-axis	00 cm	0 cm or No Intrusion	<a href="#">more</a>
V1343 — Intrusion 04 Occupant Number	00	No contact or no intrusion	<a href="#">more</a>
V1344 — Intrusion 04 Injury Number	00	No injury or no intrusion	<a href="#">more</a>
V1345 — Intrusion 04 Occupant Number	00	No contact or no intrusion	<a href="#">more</a>
V1346 — Intrusion 04 Injury Number	99	Contact, injury unknown or data not collected	<a href="#">more</a>
V1347 — Intrusion Number 05	00	No Intrusion, None	<a href="#">more</a>
V1348 — Intrusion 05 Occupant Space Number	00	No Intrusion, None	<a href="#">more</a>
V1349 — Intrusion 05 Intruding Object	00	No Intrusion, None	<a href="#">more</a>
V1350 — Intrusion 05 Assoc Event Number	0	No Intrusion, None	<a href="#">more</a>
V1351 — Intrusion 05 Max Intrusion X-axis	00 cm	0 cm or No Intrusion	<a href="#">more</a>
V1352 — Intrusion 05 Max Intrusion Y-axis	00 cm	0 cm or No Intrusion	<a href="#">more</a>
V1353 — Intrusion 05 Max Intrusion Z-axis	00 cm	0 cm or No Intrusion	<a href="#">more</a>
V1354 — Intrusion 05 Occupant Number	00	No contact or no intrusion	<a href="#">more</a>
V1355 — Intrusion 05 Injury Number	00	No injury or no intrusion	<a href="#">more</a>
V1356 — Intrusion 05 Occupant Number	00	No contact or no intrusion	<a href="#">more</a>
	99	Contact, injury unknown or data	

V1357 — Intrusion 05 Injury Number		not collected	<a href="#">more</a>
V1358 — Intrusion Number 06	00	No Intrusion, None	<a href="#">more</a>
V1359 — Intrusion 06 Occupant Space Number	00	No Intrusion, None	<a href="#">more</a>
V1360 — Intrusion 06 Intruding Object	00	No Intrusion, None	<a href="#">more</a>
V1361 — Intrusion 06 Assoc Event Number	0	No Intrusion, None	<a href="#">more</a>
V1362 — Intrusion 06 Max Intrusion X-axis	00 cm	0 cm or No Intrusion	<a href="#">more</a>
V1363 — Intrusion 06 Max Intrusion Y-axis	00 cm	0 cm or No Intrusion	<a href="#">more</a>
V1364 — Intrusion 06 Max Intrusion Z-axis	00 cm	0 cm or No Intrusion	<a href="#">more</a>
V1365 — Intrusion 06 Occupant Number	00	No contact or no intrusion	<a href="#">more</a>
V1366 — Intrusion 06 Injury Number	00	No injury or no intrusion	<a href="#">more</a>
V1367 — Intrusion 06 Occupant Number	00	No contact or no intrusion	<a href="#">more</a>
V1368 — Intrusion 06 Injury Number	99	Contact, injury unknown or data not collected	<a href="#">more</a>
V1369 — Intrusion Number 07	00	No Intrusion, None	<a href="#">more</a>
V1370 — Intrusion 07 Occupant Space Number	00	No Intrusion, None	<a href="#">more</a>
V1371 — Intrusion 07 Intruding Object	00	No Intrusion, None	<a href="#">more</a>
V1372 — Intrusion 07 Assoc Event Number	0	No Intrusion, None	<a href="#">more</a>
V1373 — Intrusion 07 Max Intrusion X-axis	00 cm	0 cm or No Intrusion	<a href="#">more</a>
V1374 — Intrusion 07 Max Intrusion Y-axis	00 cm	0 cm or No Intrusion	<a href="#">more</a>
V1375 — Intrusion 07 Max Intrusion Z-axis	00 cm	0 cm or No Intrusion	<a href="#">more</a>
V1376 — Intrusion 07 Occupant Number	00	No contact or no intrusion	<a href="#">more</a>
V1377 — Intrusion 07 Injury Number	00	No injury or no intrusion	<a href="#">more</a>
V1378 — Intrusion 07 Occupant Number	00	No contact or no intrusion	<a href="#">more</a>
V1379 — Intrusion 07 Injury Number	99	Contact, injury unknown or data not collected	<a href="#">more</a>
V1380 — Intrusion Number 08	00	No Intrusion, None	<a href="#">more</a>

V1381 — Intrusion 08 Occupant Space Number	00	No Intrusion, None	<a href="#">more</a>
V1382 — Intrusion 08 Intruding Object	00	No Intrusion, None	<a href="#">more</a>
V1383 — Intrusion 08 Assoc Event Number	0	No Intrusion, None	<a href="#">more</a>
V1384 — Intrusion 08 Max Intrusion X-axis	00 cm	0 cm or No Intrusion	<a href="#">more</a>
V1385 — Intrusion 08 Max Intrusion Y-axis	00 cm	0 cm or No Intrusion	<a href="#">more</a>
V1386 — Intrusion 08 Max Intrusion Z-axis	00 cm	0 cm or No Intrusion	<a href="#">more</a>
V1387 — Intrusion 08 Occupant Number	00	No contact or no intrusion	<a href="#">more</a>
V1388 — Intrusion 08 Injury Number	00	No injury or no intrusion	<a href="#">more</a>
V1389 — Intrusion 08 Occupant Number	00	No contact or no intrusion	<a href="#">more</a>
V1390 — Intrusion 08 Injury Number	99	Contact, injury unknown or data not collected	<a href="#">more</a>
V1391 — Intrusion Number 09	00	No Intrusion, None	<a href="#">more</a>
V1392 — Intrusion 09 Occupant Space Number	00	No Intrusion, None	<a href="#">more</a>
V1393 — Intrusion 09 Intruding Object	00	No Intrusion, None	<a href="#">more</a>
V1394 — Intrusion 09 Assoc Event Number	0	No Intrusion, None	<a href="#">more</a>
V1395 — Intrusion 09 Max Intrusion X-axis	00 cm	0 cm or No Intrusion	<a href="#">more</a>
V1396 — Intrusion 09 Max Intrusion Y-axis	00 cm	0 cm or No Intrusion	<a href="#">more</a>
V1397 — Intrusion 09 Max Intrusion Z-axis	00 cm	0 cm or No Intrusion	<a href="#">more</a>
V1398 — Intrusion 09 Occupant Number	00	No contact or no intrusion	<a href="#">more</a>
V1399 — Intrusion 09 Injury Number	00	No injury or no intrusion	<a href="#">more</a>
V1400 — Intrusion 09 Occupant Number	00	No contact or no intrusion	<a href="#">more</a>
V1401 — Intrusion 09 Injury Number	99	Contact, injury unknown or data not collected	<a href="#">more</a>
V1402 — Intrusion Number 10	00	No Intrusion, None	<a href="#">more</a>
V1403 — Intrusion 10 Occupant Space Number	00	No Intrusion, None	<a href="#">more</a>
V1404 — Intrusion 10 Intruding	00		

Object		No Intrusion, None	<a href="#">more</a>
V1405 — Intrusion 10 Assoc Event Number	0	No Intrusion, None	<a href="#">more</a>
V1406 — Intrusion 10 Max Intrusion X-axis	00 cm	0 cm or No Intrusion	<a href="#">more</a>
V1407 — Intrusion 10 Max Intrusion Y-axis	00 cm	0 cm or No Intrusion	<a href="#">more</a>
V1408 — Intrusion 10 Max Intrusion Z-axis	00 cm	0 cm or No Intrusion	<a href="#">more</a>
V1409 — Intrusion 10 Occupant Number	00	No contact or no intrusion	<a href="#">more</a>
V1410 — Intrusion 10 Injury Number	00	No injury or no intrusion	<a href="#">more</a>
V1411 — Intrusion 10 Occupant Number	00	No contact or no intrusion	<a href="#">more</a>
V1412 — Intrusion 10 Injury Number	99	Contact, injury unknown or data not collected	<a href="#">more</a>
V1413 — Door Intrusion Number 01	88	Not Applicable	<a href="#">more</a>
V1414 — Door Intrusion Number 01 Cause	8	Not applicable	<a href="#">more</a>
V1415 — Door Intrusion Number 02	88	Not Applicable	<a href="#">more</a>
V1416 — Door Intrusion Number 02 Cause	8	Not applicable	<a href="#">more</a>
V1417 — Door Intrusion Number 03	88	Not Applicable	<a href="#">more</a>
V1418 — Door Intrusion Number 03 Cause	8	Not applicable	<a href="#">more</a>
V1419 — Door Intrusion 01 Component	88	Not Applicable	<a href="#">more</a>
V1420 — Door Intrusion 01 Component Damaged 1	8	Not Applicable	<a href="#">more</a>
V1421 — Door Intrusion 01 Component Damaged 2	8	Not Applicable	<a href="#">more</a>
V1422 — Door Intrusion 02 Component	88	Not Applicable	<a href="#">more</a>
V1423 — Door Intrusion 02 Component Damaged 1	8	Not Applicable	<a href="#">more</a>
V1424 — Door Intrusion 02 Component Damaged 2	8	Not Applicable	<a href="#">more</a>
V1425 — Door Intrusion 03 Component	88	Not Applicable	<a href="#">more</a>
V1426 — Door Intrusion 03 Component Damaged 1	8	Not Applicable	<a href="#">more</a>
V1427 — Door Intrusion 03 Component Damaged 2	8	Not Applicable	<a href="#">more</a>



V1428 — Door Intrusion 04 Component	88	Not Applicable	<a href="#">more</a>
V1429 — Door Intrusion 04 Component Damaged 1	8	Not Applicable	<a href="#">more</a>
V1430 — Door Intrusion 04 Component Damaged 2	8	Not Applicable	<a href="#">more</a>

**Case Vehicle  
Airbag(s)**



[Click for Driver airbag figure](#)



[Click for Passenger airbag figure](#)

[Back to Top](#)

Variable Number and Name	Code Value	Code Description	Other Options
V1501 — Driver Airbag Equipped	1	Yes	<a href="#">more</a>
V1502 — Driver Airbag Deployed	1	Yes	<a href="#">more</a>
V1503 — Driver Airbag Condition	0	No Damage	<a href="#">more</a>
V1504 — Passenger Airbag Equip	1	Yes	<a href="#">more</a>
V1505 — Passenger Airbag Deployed	1	Yes	<a href="#">more</a>
V1506 — Passenger Airbag Condition	0	No Damage	<a href="#">more</a>
V1507 — Steering Wheel Airbag Tether	1	Yes	<a href="#">more</a>
V1508 — Driver Airbag Marked By Contact	0	No	<a href="#">more</a>
V1509 — Passenger Airbag Tether	0	No	<a href="#">more</a>
V1510 — Passenger Airbag Marked By Contact	0	No	<a href="#">more</a>

**Case Vehicle  
Interior**

[Back to Top](#)

Variable Number and Name	Code Value	Code Description	Other Options
V1601 — Left Front Door Damaged	0	No	<a href="#">more</a>
V1602 — Right Front Door Damaged	0	No	<a href="#">more</a>
V1603 — Left Front Hardware Damaged	0	No	<a href="#">more</a>
V1604 — Right Front Hardware Damaged	0	No	<a href="#">more</a>
V1605 — Left Front Armrest Damaged	0	No	<a href="#">more</a>

V1606 — Right Front Armrest Damaged	0	No	<a href="#">more</a>
V1607 — Left Front Glass Damaged	0	No	<a href="#">more</a>
V1608 — Right Front Glass Damaged	0	No	<a href="#">more</a>
V1609 — Left Rear Door Area Damaged	0	No	<a href="#">more</a>
V1610 — Right Rear Door Area Damaged	0	No	<a href="#">more</a>
V1611 — Left Rear Hardware Damaged	0	No	<a href="#">more</a>
V1612 — Right Rear Hardware Damaged	0	No	<a href="#">more</a>
V1613 — Left Rear Armrest Damaged	0	No	<a href="#">more</a>
V1614 — Right Rear Armrest Damaged	0	No	<a href="#">more</a>
V1615 — Left Rear Glass Damaged	0	No	<a href="#">more</a>
V1616 — Right Rear Glass Damaged	0	No	<a href="#">more</a>
V1617 — Left Roof Side Rail Damaged	0	No	<a href="#">more</a>
V1618 — Right Roof Side Rail Damaged	0	No	<a href="#">more</a>
V1619 — Left B-pillar Damaged	0	No	<a href="#">more</a>
V1620 — Right B-pillar Damaged	0	No	<a href="#">more</a>
V1621 — Left C-pillar Damaged	0	No	<a href="#">more</a>
V1622 — Right C-pillar Damaged	0	No	<a href="#">more</a>
V1623 — Left D-pillar Damaged	8	Not applicable	<a href="#">more</a>
V1624 — Right D-pillar Damaged	8	Not applicable	<a href="#">more</a>
V1625 — Left Headlining Damaged	0	No	<a href="#">more</a>
V1626 — Right Headlining Damaged	0	No	<a href="#">more</a>
V1627 — Left Roof Structure Damaged	0	No	<a href="#">more</a>
V1628 — Right Roof Structure Damaged	0	No	<a href="#">more</a>
V1629 — Left T/Sun Roof Damaged	8	Not applicable	<a href="#">more</a>
V1630 — Right T/Sun Roof Damaged	8	Not applicable	<a href="#">more</a>
V1631 — Other Left Side Item Damaged	8	Not applicable	<a href="#">more</a>
V1632 — Other Right Side Item Damaged	8	Not applicable	<a href="#">more</a>
V1633 — Foot Controls Damaged	0	No	<a href="#">more</a>

V1634 — Ignition Key Damaged	0	No	<a href="#">more</a>
V1635 — Rear View Mirror Damaged	0	No	<a href="#">more</a>
V1636 — Sunvisor/Fitting Damaged	0	No	<a href="#">more</a>
V1637 — Windshield Molding Damaged	0	No	<a href="#">more</a>
V1638 — Left A-pillar Damaged	0	No	<a href="#">more</a>
V1639 — Right A-pillar Damaged	0	No	<a href="#">more</a>
V1640 — Center Console Damaged	0	No	<a href="#">more</a>
V1641 — Transmission Lever Damaged	0	No	<a href="#">more</a>
V1642 — Horn/Spoke Shroud Damaged	0	No	<a href="#">more</a>
V1643 — Upper Panel Damaged	0	No	<a href="#">more</a>
V1644 — Mid Panel Damaged	0	No	<a href="#">more</a>
V1645 — Lower Panel Damaged	4	Yes, occupant contact	<a href="#">more</a>
V1646 — Ashtray Damaged	0	No	<a href="#">more</a>
V1647 — Control Knob/Lever Damaged	0	No	<a href="#">more</a>
V1648 — Glove Compartment Area Damaged	0	No	<a href="#">more</a>
V1649 — Instruments Damaged	0	No	<a href="#">more</a>
V1650 — Park Brake Release Damaged	0	No	<a href="#">more</a>
V1651 — Park Brake Pedal Damaged	0	No	<a href="#">more</a>
V1652 — A/C Or Upper Vent Damaged	0	No	<a href="#">more</a>
V1653 — Heater Or A/C Duct Damaged	0	No	<a href="#">more</a>
V1654 — Radio Damaged	0	No	<a href="#">more</a>
V1655 — Other Item Damaged	8	Not applicable	<a href="#">more</a>
V1656 — Rear Window Damaged	0	No	<a href="#">more</a>
V1657 — Rear Window Header Damaged	0	No	<a href="#">more</a>
V1658 — Vertical Console Damaged	0	No	<a href="#">more</a>
V1659 — Roof Console Damaged	8	Not applicable	<a href="#">more</a>

## Case Vehicle Seats

[Back to Top](#)

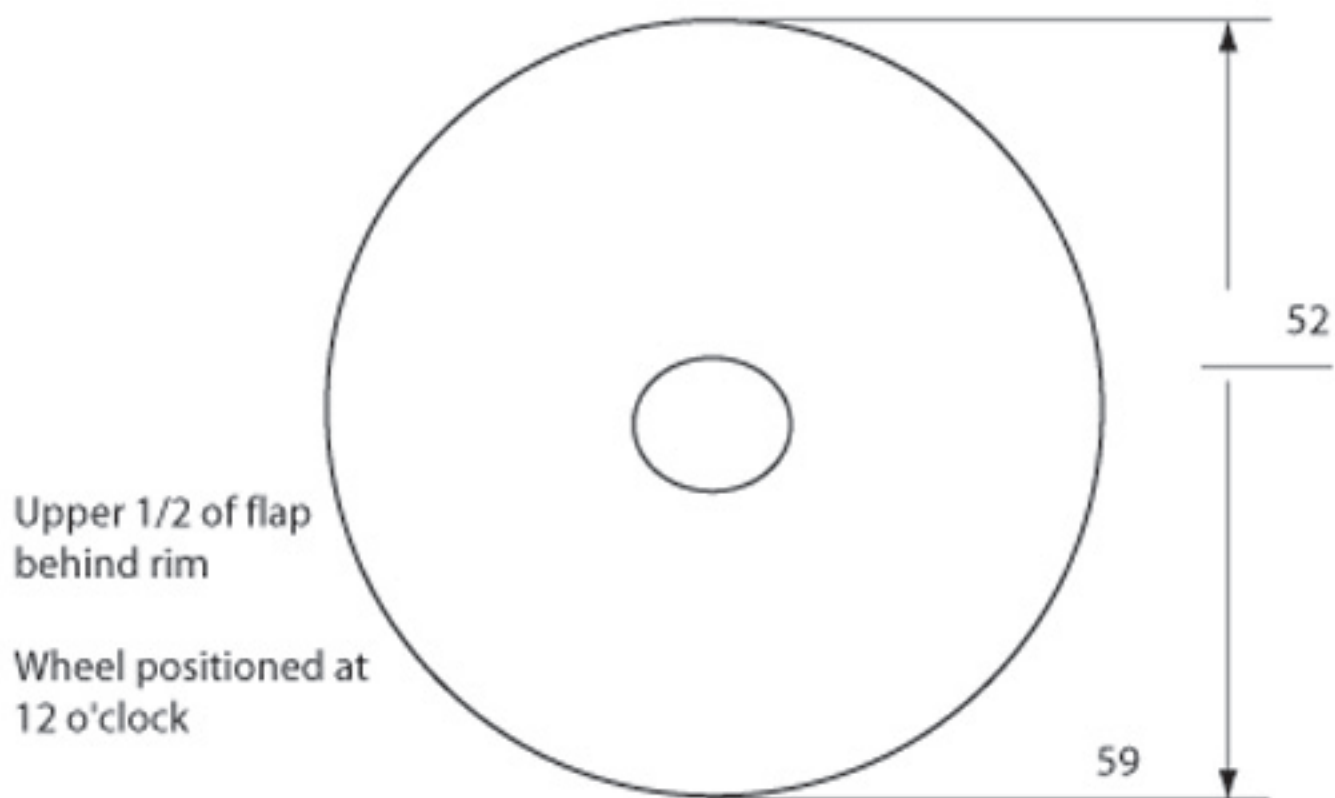
Variable Number and Name	Code Value	Code Description	Other Options

V1701 — Driver Front Seat Type	05	Bucket	<a href="#">more</a>
V1702 — Passenger Front Seat Type	05	Bucket	<a href="#">more</a>
V1703 — Driver Seat Mount Type	1	Standard	<a href="#">more</a>
V1704 — Passenger Seat Mount Type	1	Standard	<a href="#">more</a>
V1705 — Driver Swivel Mechanism Equipped	0	No	<a href="#">more</a>
V1706 — Passenger Swivel Mechanism Equipped	0	No	<a href="#">more</a>
V1707 — Driver Seat Original Equipment	1	Yes	<a href="#">more</a>
V1708 — Passenger Seat Original Equipment	1	Yes	<a href="#">more</a>
V1709 — Driver Seat/Rear Occupant Contact	8	Not applicable	<a href="#">more</a>
V1710 — Passenger Seat/Rear Occupant Contact	8	Not applicable	<a href="#">more</a>
V1711 — Driver Seat Damage	0	None	<a href="#">more</a>
V1712 — Passenger Seat Damage	0	None	<a href="#">more</a>
V1713 — Center Front Armrest Damaged	0	No	<a href="#">more</a>
V1714 — Driver Seat Rotation	0	None apparent	<a href="#">more</a>
V1715 — Passenger Seat Rotation	0	None apparent	<a href="#">more</a>
V1716 — Driver Seat-back Type	3	Reclining	<a href="#">more</a>
V1717 — Passenger Seat-back Type	3	Reclining	<a href="#">more</a>
V1718 — Driver Seat-back Lock Type	1	Manual	<a href="#">more</a>
V1719 — Passenger Seat-back Lock Type	1	Manual	<a href="#">more</a>
V1720 — Driver Seat-back Lock Held	1	Yes	<a href="#">more</a>
V1721 — Passenger Seat-back Lock Held	1	Yes	<a href="#">more</a>
V1722 — Driver Recliner Mechanism Held	1	Yes	<a href="#">more</a>
V1723 — Passenger Recliner Mechanism Held	1	Yes	<a href="#">more</a>
V1724 — Driver Head Restraint Type	1	Adjustable	<a href="#">more</a>
V1725 — Passenger Head Restraint Type	1	Adjustable	<a href="#">more</a>

V1726 — Driver Head Rest Removed	0	No	<a href="#">more</a>
V1727 — Passenger Head Rest Removed	0	No	<a href="#">more</a>
V1728 — Driver Head Rest Adjustment	1	Up	<a href="#">more</a>
V1729 — Passenger Head Rest Adjustment	1	Up	<a href="#">more</a>
V1730 — Driver Head Rest Damage	0	None	<a href="#">more</a>
V1731 — Passenger Head Rest Damage	0	None	<a href="#">more</a>
V1732 — Driver Seat Adjustment Type	1	Manual	<a href="#">more</a>
V1733 — Passenger Seat Adjustment Type	1	Manual	<a href="#">more</a>
V1734 — Driver Seat Adjustment Provided	1	2-way	<a href="#">more</a>
V1735 — Passenger Seat Adjustment Provided	1	2-way	<a href="#">more</a>
V1736 — Driver Seat Adjuster Damage	0	None	<a href="#">more</a>
V1737 — Passenger Seat Adjuster Damage	0	None	<a href="#">more</a>
V1738 — Driver Seat Adjuster Separation	8	Not applicable	<a href="#">more</a>
V1739 — Passenger Seat Adjuster Separation	8	Not applicable	<a href="#">more</a>
V1740 — Driver Seat Pre-crash Position	3	Rearward	<a href="#">more</a>
V1741 — Passenger Seat Pre-crash Position	3	Rearward	<a href="#">more</a>
V1742 — Left Rear Seat Type	1	Non-folding	<a href="#">more</a>
V1743 — Right Rear Seat Type	1	Non-folding	<a href="#">more</a>
V1744 — Left Rear Seat Damaged	0	None	<a href="#">more</a>
V1745 — Right Rear Seat Damaged	0	None	<a href="#">more</a>
V1746 — Center Rear Armrest Damaged	8	Not applicable (No Center Armrest)	<a href="#">more</a>
V1747 — Left Rear Seat-back Left Lock Equipped	8	Not applicable	<a href="#">more</a>
V1748 — Right Rear Seat-back Left Lock Equipped	8	Not applicable	<a href="#">more</a>
V1749 — Left Rear Seat-back Left Lock Held	8	Not applicable	<a href="#">more</a>

V1750 — Right Rear Seat-back Left Lock Held	8	Not applicable	<a href="#">more</a>
V1751 — Left Rear Seat-back Right Lock Equipped	8	Not applicable	<a href="#">more</a>
V1752 — Right Rear Seat-back Right Lock Equipped	8	Not applicable	<a href="#">more</a>
V1753 — Left Rear Seat-back Right Lock Held	8	Not applicable	<a href="#">more</a>
V1754 — Right Rear Seat-back Right Lock Held	8	Not applicable	<a href="#">more</a>
V1755 — Left 3rd Seat Equipped	0	No	<a href="#">more</a>
V1756 — Right 3rd Seat Equipped	0	No	<a href="#">more</a>
V1757 — Left 3rd Seat Backrest Damaged	8	Not applicable	<a href="#">more</a>
V1758 — Right 3rd Seat Backrest Damaged	8	Not applicable	<a href="#">more</a>
V1759 — Left 3rd Seat Cushion Damaged	8	Not applicable	<a href="#">more</a>
V1760 — Right 3rd Seat Cushion Damaged	8	Not applicable	<a href="#">more</a>
V1761 — Rear Head Restraints	1	Equipped	<a href="#">more</a>

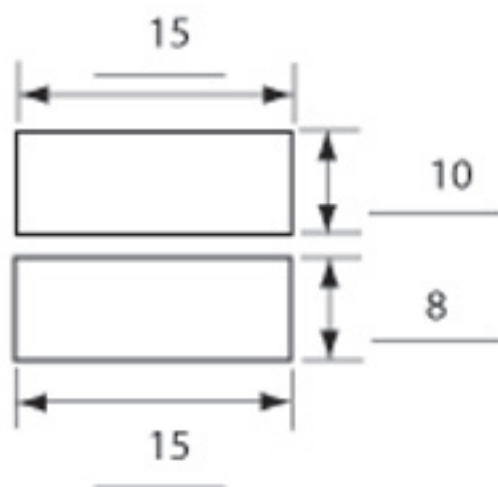
### Driver Airbag



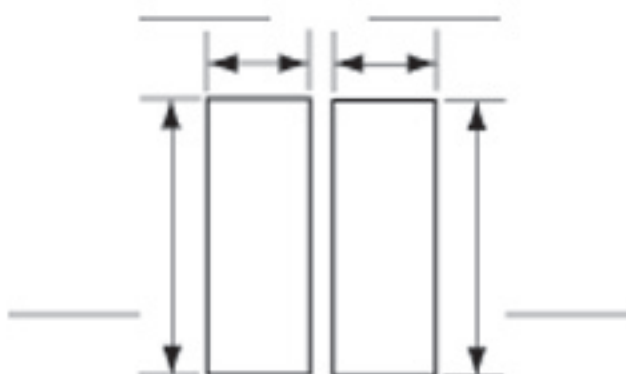
Vents:  Y  N  
if yes, how many: 2

Tethers:  Y  N  
if yes, how many: 2

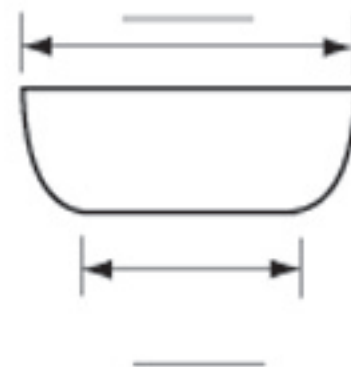
### Driver Airbag Doors



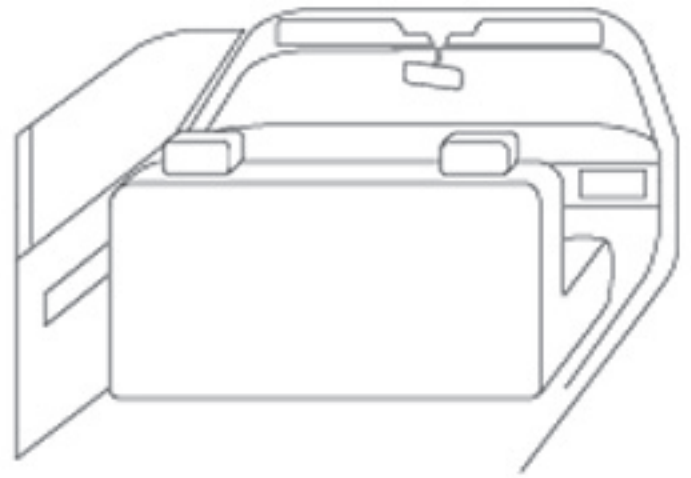
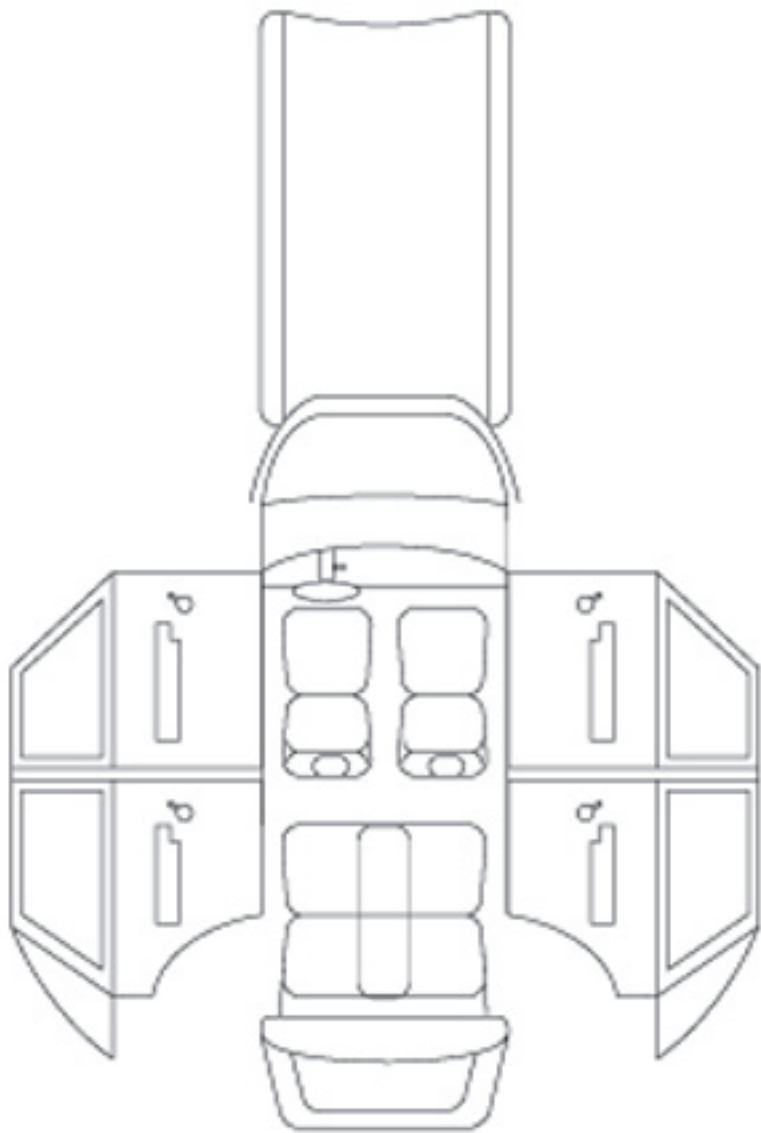
H-Pattern



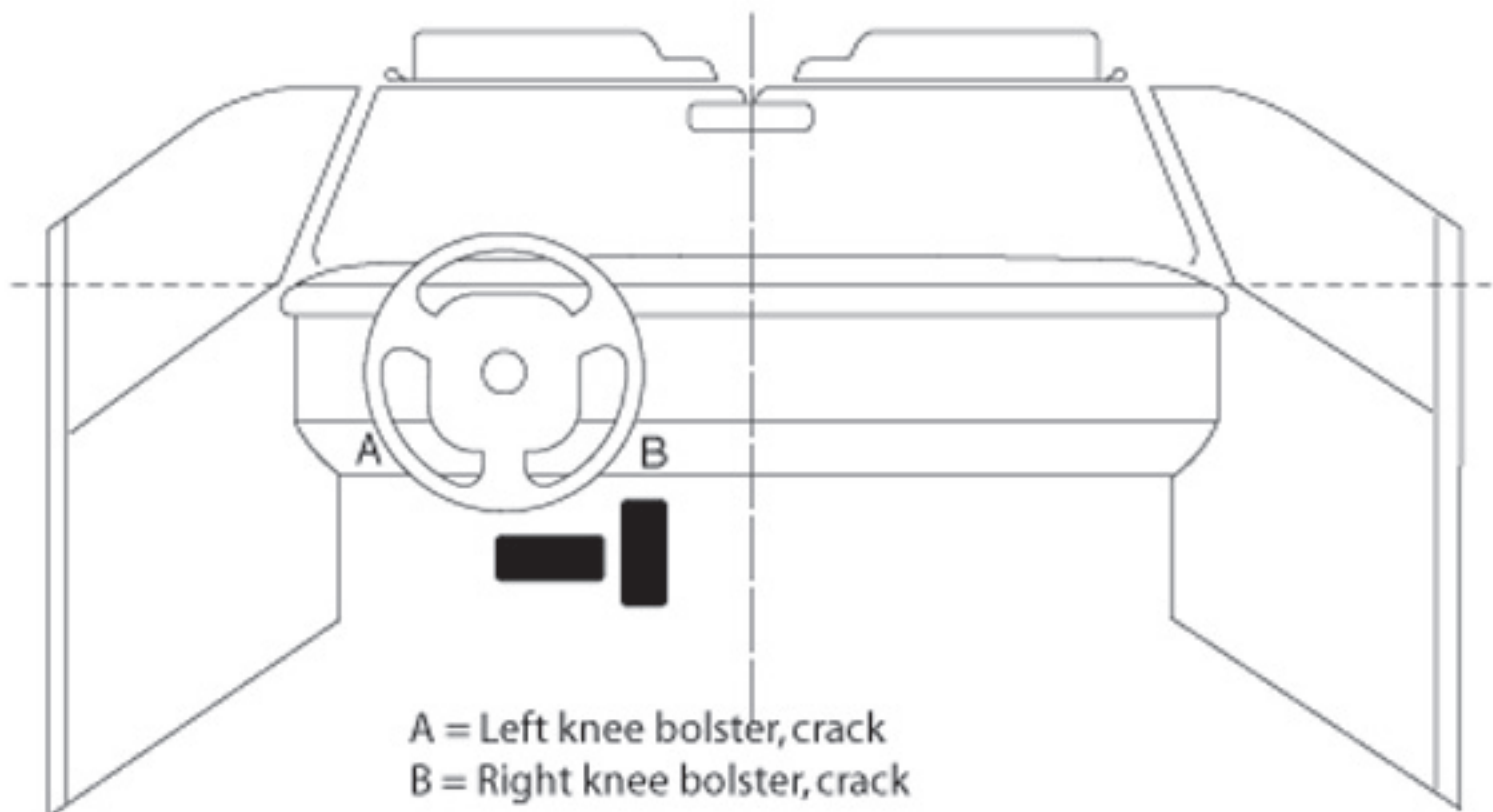
I-Pattern



Single Door



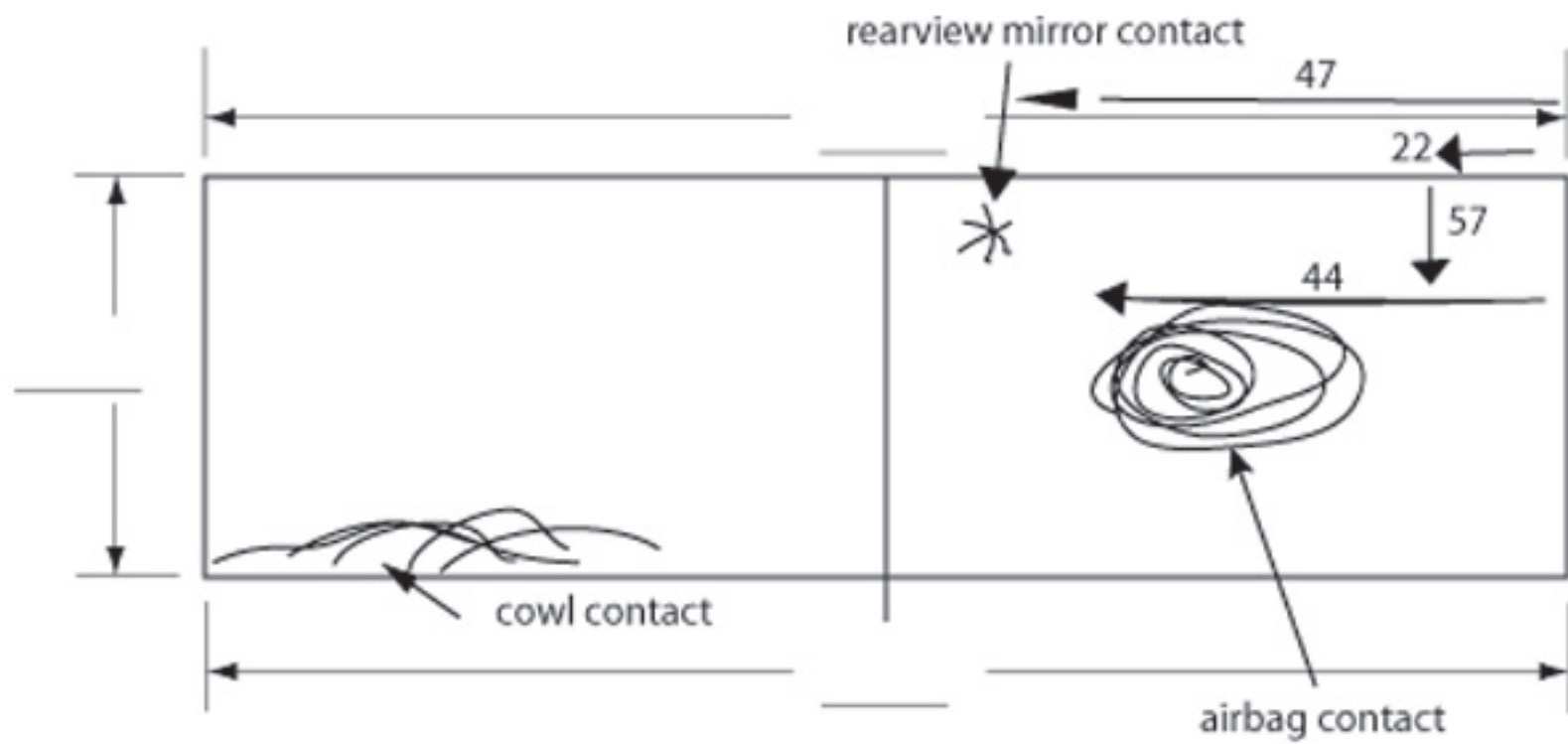
Evidence of belt use: Yes  
 Scratch on D-ring  
 B-pillar lower cover pulled out  
 Up on B-pillar  
 Scratches on continuous loop  
 Transfer on webbing from D-ring



A = Left knee bolster, crack  
 B = Right knee bolster, crack







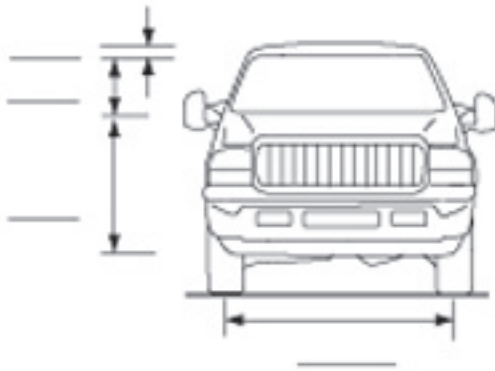
WINDSHIELD MARK ON CASE VEHICLE:



SUNSHADE  
SOLEX  
DUPLATE  
LAMINATED  
SAFETY FLOAT

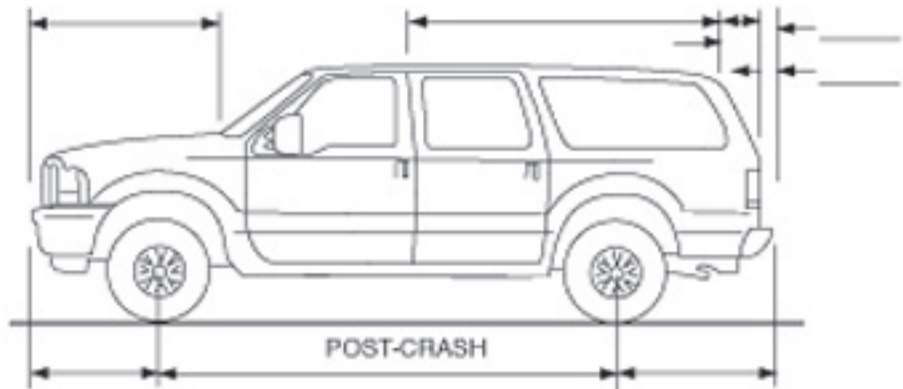
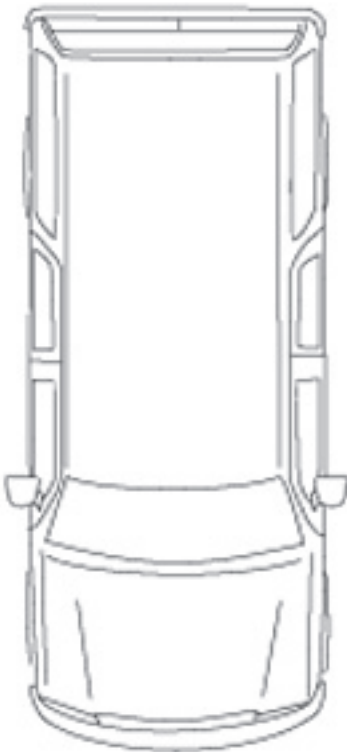
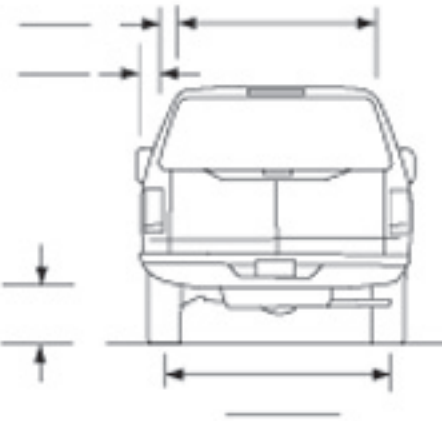
0 AS1 8  
DOT 129 M117  
FW-2073

MEASUREMENTS IN CENTIMETERS



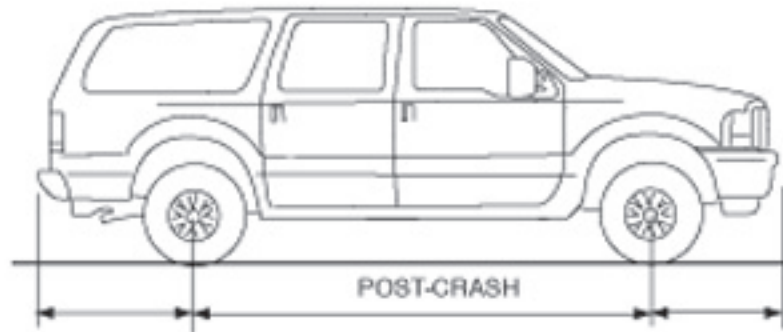
No inspection repaired

Original Bumper Height



Bumper corner  
Stringline

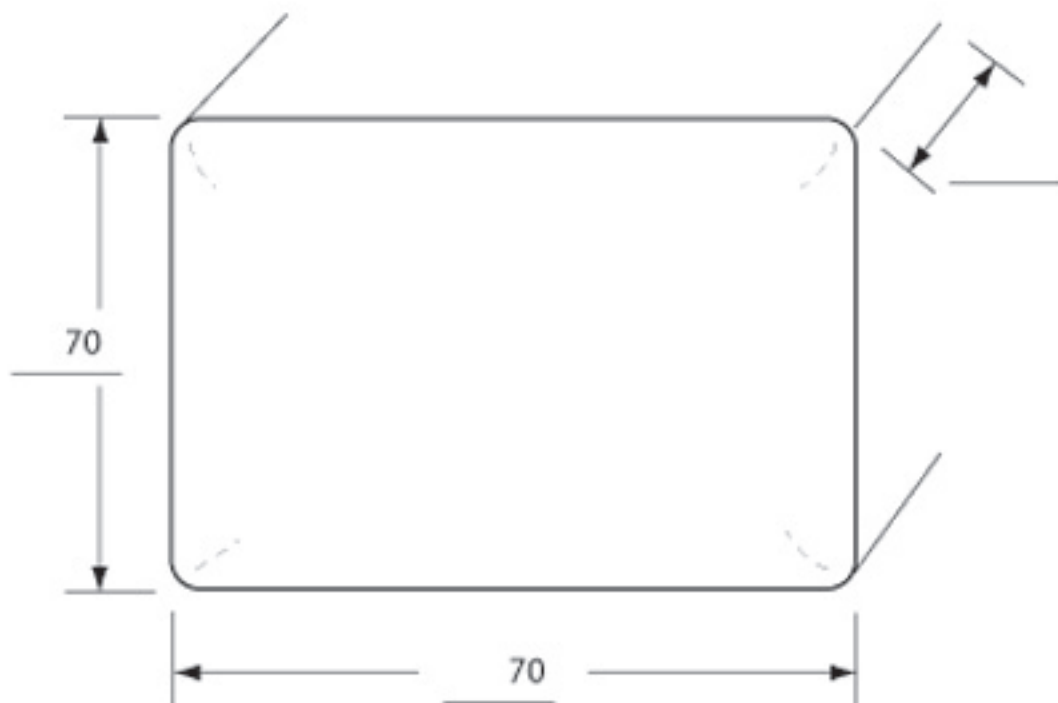
Bumper corner  
Stringline



Bumper corner  
Stringline

Bumper corner  
Stringline

### Passenger Airbag

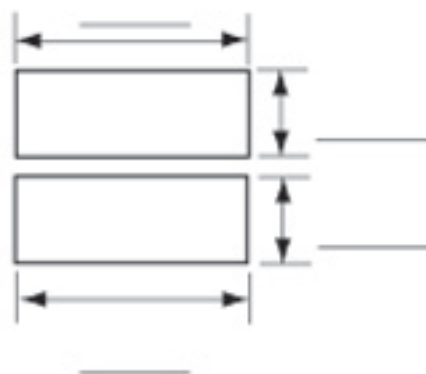


Vents: Y  N  
if yes, how many: \_\_\_\_\_

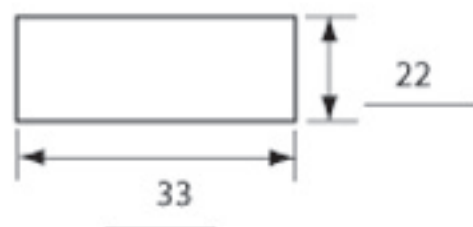
Tethers: Y  N  
if yes, how many: \_\_\_\_\_

### Passenger Airbag Doors

H-Pattern



Single Door





A9703 4





















The BACK SEAT is the SAFEST place for children.  
NEVER use a car's trunk or load capacity, distribution, or weight. Always use proper tie-down technique. Always use proper tie-down technique. Always use proper tie-down technique.











AIR BAG

1156

















**OBD INFORMATION:**  
ENGINE MUST BE  
RUNNING FOR PROPER  
READOUT OF OBD  
INFORMATION.

RESET  
PWR  
VOL. PWR  
CD/CD  
FM/AM  
AS/PS















**WARNING**

































Phone



















































**OBD INFORMATION:**  
ENGINE MUST BE  
RUNNING FOR PROPER  
READOUT OF OBD  
INFORMATION.

PWR

RESET

VOL



