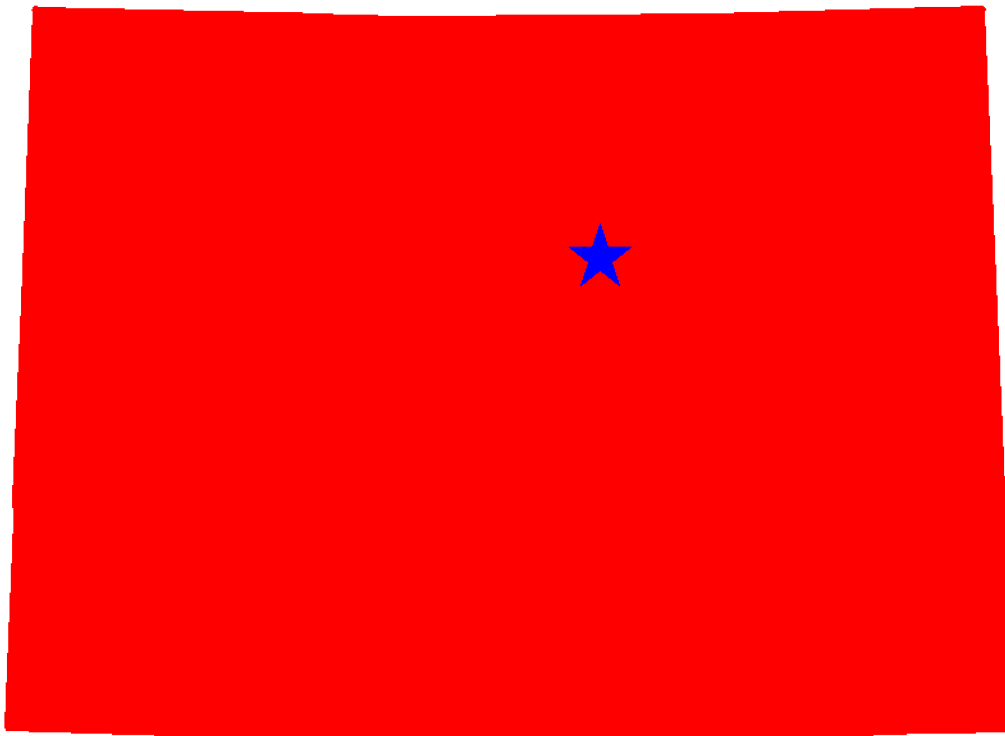




Traffic Safety Facts Colorado 2005-2009



This Report Contains Data From the Following Sources:

- Fatality Data - NCSA Fatality Analysis Reporting System (FARS): 2005-2008 Final File and 2009 Annual Report File (ARF)
- Observed Safety Belt Data - NCSA National Occupant Protection Use Survey (NOPUS) and the Colorado State Survey
- Vehicle Miles of Travel Data and Motorcycle Registrations - Federal Highway Administration (FHWA)
- Population Data - U.S. Bureau of the Census



Table of Contents (Listed by Table Title and Page Number)

3. Traffic Safety Performance Measures
4. Fatality Rates: Colorado , U.S. and Best State
5. Alcohol-Related Fatalities: Colorado , U.S. and Best State (Old Definition)
6. Alcohol-Impaired Driving Fatalities: Colorado , U.S. and Best State (New Definition)
7. Fatalities Per 100 Million VMT: Colorado , U.S.
7. Alcohol-Impaired Driving Fatalities Per 100 Million VMT: Colorado , U.S.
8. Blood Alcohol Concentration (BAC) Reporting Rates For Drivers/Motorcycle Rider (Operators) Involved in Fatal Crashes: Colorado , U.S. and Best State
9. Front Seat Passenger Vehicle Occupants, Aged 5 and Over, by Restraint Use: Fatalities and Observed Colorado , U.S. and Best State
10. Front Seat Passenger Vehicle Occupant Fatalities, Aged 5 and Over, by Percent Restraint Use: Colorado , U.S.
10. Front Seat Passenger Vehicle Occupants Observed, Aged 5 and Over, by Percent Restraint Use: Colorado , U.S.
11. Passenger Vehicle Occupant Fatalities Aged 5 and Above by Restraint Use and Lives Saved Estimates
11. Passenger Vehicle Occupant Fatalities Aged Under 5 by Restraint Use and Lives Saved Estimates
12. Motorcyclist Fatalities by Helmet Use and Lives Saved Estimates
13. Fatalities by Person Type
14. Fatalities by Crash Type
15. Motorcyclist Fatalities by Age
15. Motorcyclist Fatalities Per 100,000 Registered Motorcycles
16. Fatalities by Person Type and Race/Hispanic Origin
17. Top 10 Counties for Fatalities
18. Top 10 Counties for Fatalities: Year to Year Percent Change
19. Top 10 Counties for Fatality Rates
20. Motor Vehicle Crash Fatality Maps:
Total Fatalities, Alcohol-Impaired Driving Fatalities, Single Vehicle Crash Fatalities
21. Motor Vehicle Crash Fatality Maps:
Large Truck Crash Fatalities, Speeding Involved Fatalities, Roadway Departure Fatalities
22. Motor Vehicle Crash Fatality Maps:
Intersection Fatalities, Passenger Car Occupants, Light Truck and Van Occupants
23. Motor Vehicle Crash Fatality Maps:
Motorcyclist Fatalities, Pedestrian Fatalities, Pedestrian Fatalities



Traffic Safety Performance (Core Outcome) Measures* For Colorado

Core Outcome Measures		Year				
		2005	2006	2007	2008	2009
Traffic Fatalities	Total	606	535	554	548	465
	Rural	333	306	316	296	252
	Urban	273	229	238	252	213
	Unknown	0	0	0	0	0
Fatalities Per 100 Million Vehicle Miles Driven	Total	1.26	1.10	1.14	1.15	1.00
	Rural	2.23	1.98	2.02	1.89	1.73
	Urban	0.83	0.69	0.72	0.78	0.67
Passenger Vehicle Occupant Fatalities (All Seat Positions)	Total	444	368	367	378	304
	Restrained	188	139	161	186	125
	Unrestrained	250	226	193	173	168
	Unknown	6	3	13	19	11
Alcohol-Impaired Driving Fatalities (BAC=.08+)**		206	179	167	176	158
Speeding-Related Fatalities		204	182	224	210	171
Motorcyclist Fatalities	Total	87	74	90	98	88
	Helmeted	4	13	33	30	27
	Unhelmeted	83	61	57	68	60
	Unknown	0	0	0	0	1
Drivers Involved in Fatal Crashes	Total	847	721	789	712	653
	Aged Under 15	1	2	2	1	1
	Aged 15-20	107	97	85	86	63
	Aged Under 21	108	99	87	87	64
	Aged 21 and Over	727	614	696	617	586
	Unknown Age	12	8	6	8	3
Pedestrian Fatalities		48	59	58	43	47

*These Performance Measures Were Developed By The National Highway Traffic Safety Administration (NHTSA) and the Governors Highway Safety Association (GHSA) (See Publication: DOT HS 811 025)

**Based on the BAC of All Involved Drivers and Motorcycle Riders (Operators) Only

[Back To The Table of Contents](#)



Fatality Rates: Colorado , U.S. and Best State

Year		Fatalities	Total Vehicle Miles Traveled (Millions)	Fatalities Per 100 Million Vehicle Miles Traveled	Total Population	Fatalities Per 100,000 Population
2005	Colorado	606	47,962	1.26	4,660,780	13.00
	US	43,510	2,989,430	1.46	295,753,151	14.71
	Best State*			0.80		6.83
2006	Colorado	535	48,641	1.10	4,753,044	11.26
	US	42,708	3,014,371	1.42	298,593,212	14.30
	Best State*			0.78		6.34
2007	Colorado	554	48,713	1.14	4,842,259	11.44
	US	41,259	3,031,124	1.36	301,579,895	13.68
	Best State*			0.79		6.54
2008	Colorado	548	47,860	1.15	4,935,213	11.10
	US	37,423	2,976,528	1.26	304,374,846	12.30
	Best State*			0.67		5.56
2009	Colorado	465	46,276	1.00	5,024,748	9.25
	US	33,808	2,953,501	1.14	307,006,550	11.01
	Best State*			0.61		4.84

*State (or States) With Lowest Rates: Lowest VMT and Population Rates Could Be in Different States

[Back To The Table of Contents](#)



Fatalities By The Highest Blood Alcohol Concentration (BAC) in the Crash**:
Colorado , U.S. and Best State
(Old Definition)

Year		Total Fatalities in all Crashes	Highest BAC level in the Crash					
			BAC = .01+			BAC = .08+		
			Number	Percent	Per 100 Million VMT	Number	Percent	Per 100 Million VMT
2005	Colorado	606	252	42	0.53	222	37	0.46
	US	43,510	17,590	40	0.59	15,102	35	0.51
	Best State*			14	0.16		12	0.14
2006	Colorado	535	227	42	0.47	193	36	0.40
	US	42,708	17,738	42	0.59	15,144	35	0.50
	Best State*			24	0.26		20	0.22
2007	Colorado	554	224	40	0.46	195	35	0.40
	US	41,259	17,158	42	0.57	14,603	35	0.48
	Best State*			24	0.27		21	0.23
2008	Colorado	548	220	40	0.46	190	35	0.40
	US	37,423	15,449	41	0.52	13,258	35	0.45
	Best State*			21	0.21		16	0.16
2009	Colorado	465	198	43	0.43	178	38	0.38
	US	33,808	14,188	42	0.48	12,233	36	0.41
	Best State*			23	0.22		18	0.16

*State (or States) With Lowest Percents: Lowest Percents Could Be in Different States

**Based on the BAC of All Involved Drivers, Motorcycle Riders (Operators), Pedalcyclists and Pedestrians

[Back To The Table of Contents](#)



Alcohol-Impaired Driving Fatalities**:
Colorado , U.S. and Best State
(New Definition)

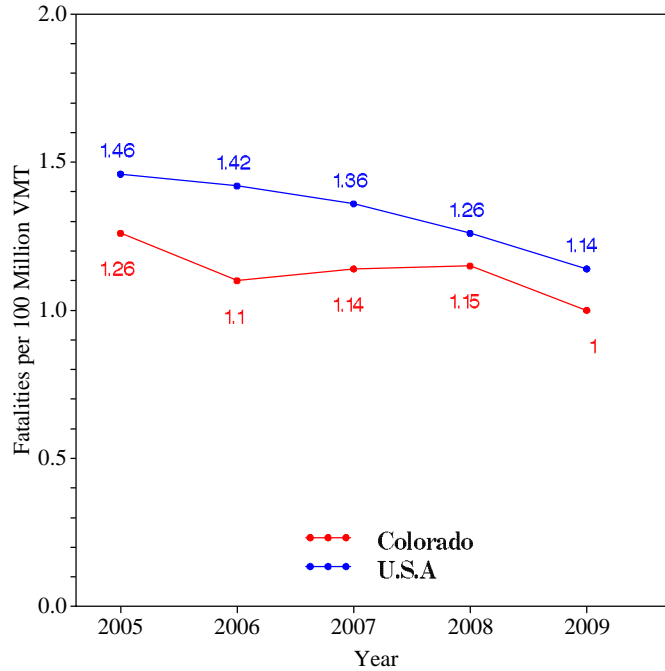
Year		Total Fatalities in all Crashes	Alcohol-Impaired Driving Fatalities (BAC = .08+)		
			Number	Percent	Per 100 Million VMT
2005	Colorado	606	206	34	0.43
	US	43,510	13,582	31	0.45
	Best State*			12	0.13
2006	Colorado	535	179	33	0.37
	US	42,708	13,491	32	0.45
	Best State*			18	0.20
2007	Colorado	554	167	30	0.34
	US	41,259	13,041	32	0.43
	Best State*			19	0.21
2008	Colorado	548	176	32	0.37
	US	37,423	11,711	31	0.39
	Best State*			16	0.16
2009	Colorado	465	158	34	0.34
	US	33,808	10,839	32	0.37
	Best State*			16	0.15

*State (or States) With Lowest Percents: Lowest Percents Could Be in Different States
**Based on the BAC of All Involved Drivers and Motorcycle Riders (Operators) Only

[Back To The Table of Contents](#)

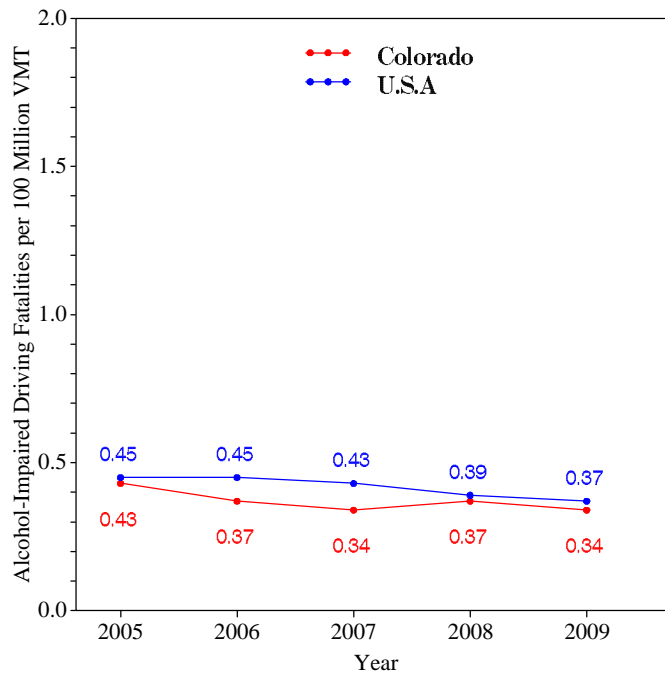


Fatalities per 100 Million VMT



[Back To The Table of Contents](#)

Alcohol-Impaired Driving Fatalities per 100 Million VMT



[Back To The Table of Contents](#)



**Blood Alcohol Concentration (BAC) Reporting Rates
For Drivers/Motorcycle Riders (Operators)
Involved in Fatal Crashes:
Colorado , U.S. and Best State**

Year		Surviving Drivers/Motorcycle Riders			Killed Drivers/Motorcycle Riders			Total Drivers/Motorcycle Riders		
		Total	With Blood Alcohol Concentration (BAC) Results Reported to FARS		Total	With Blood Alcohol Concentration (BAC) Results Reported to FARS		Total	With Blood Alcohol Concentration (BAC) Results Reported to FARS	
			Number	Percent		Number	Percent		Number	Percent
2005	Colorado	453	32	7	394	259	66	847	291	34
	US	31,729	7,415	23	27,491	18,773	68	59,220	26,188	44
	Best State*			77			98			84
2006	Colorado	384	55	14	337	243	72	721	298	41
	US	30,498	7,482	25	27,348	18,911	69	57,846	26,393	46
	Best State*			81			99			85
2007	Colorado	437	37	8	352	308	88	789	345	44
	US	29,449	7,631	26	26,570	19,434	73	56,019	27,065	48
	Best State*			82			100			84
2008	Colorado	351	38	11	361	289	80	712	327	46
	US	26,162	7,656	29	24,254	18,415	76	50,416	26,071	52
	Best State*			81			99			85
2009	Colorado	341	37	11	312	248	79	653	285	44
	US	23,432	6,372	27	21,798	15,505	71	45,230	21,877	48
	Best State*			86			97			90

*State (or States) With Highest Percents: Highest Percents Could Be in Different States

[Back To The Table of Contents](#)



Daytime Front Seat (Outboard Only) Passenger Vehicle Occupants, Aged 5 and Over, by Restraint Use: Fatalities and Observed Colorado , U.S. and Best State

Table with 3 columns: Year, Restraint Category (Colorado, US, Best State*), Fatalities - Restrained** (Percent), and Observed - Restrained*** (Percent). Rows are grouped by year from 2005 to 2009.

*State With Highest Percent. Fatal Crash and Observed Percents Can Be Different States

**Percent Based Only Where Restraint Use Was Known

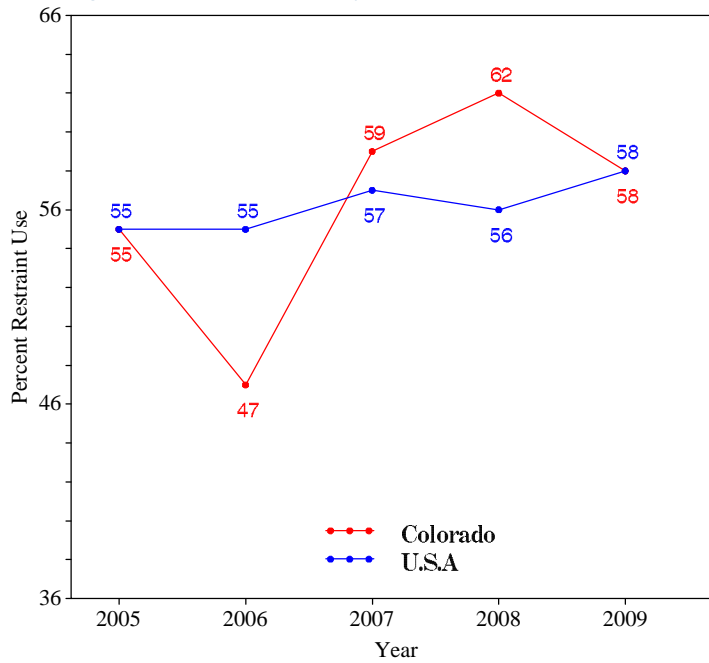
***USA Data: National Occupant Protection Use Survey. Colorado Data: State Survey

Note: The Purpose of this Table is to Compare (as closely as possible) the Use of Restraint Systems by Fatally Injured Occupants with Occupants in all Driving Situations

Back To The Table of Contents



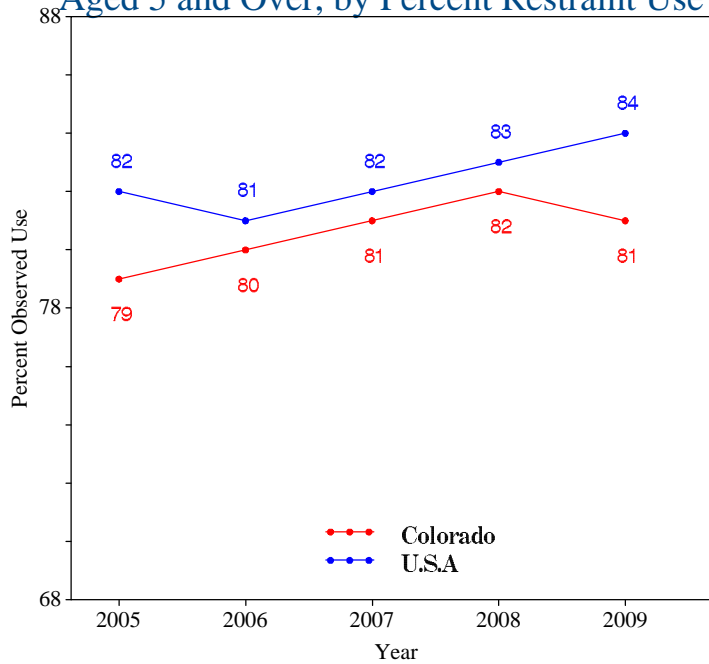
Daytime Front Seat (Outboard Only) Passenger Vehicle Occupant Fatalities, Aged 5 and Over, by Percent Restraint Use*



*Percent Based Only Where Restraint Use Was Known

[Back To The Table of Contents](#)

Daytime Front Seat (Outboard Only) Passenger Vehicle Occupants Observed, Aged 5 and Over, by Percent Restraint Use*



*USA Data: National Occupant Protection Use Survey. Colorado Data: State Survey

[Back To The Table of Contents](#)



Passenger Vehicle Occupant Fatalities Age 5 and Above by Restraint Use and Lives Saved Estimates

Year	Fatalities Age 5 and Above					Lives Saved Estimates**	
	Total	Restrained	Unrestrained	Unknown Restraint Use	Percent Known Restrained*	Lives Saved at Current Belt Use	Additional Lives Savable at 100% Belt Usage
2005	433	179	248	6	42	216	87
2006	362	134	225	3	37	168	74
2007	364	159	192	13	45	201	82
2008	371	181	171	19	51	233	88
2009	300	125	164	11	43	163	68

*Percent Based Only Where Restraint Use Was Known

**Lives Saved Estimates (Sum of columns may not equal other published numbers due to rounding)

[Back To The Table of Contents](#)

Passenger Vehicle Occupant Fatalities Age 4 and Under by Restraint Use and Lives Saved Estimates

Year	Fatalities Age 4 and Under					Lives Saved Estimates**
	Total	Restrained	Unrestrained	Unknown Restraint Use	Percent Known Restrained*	Lives Saved at Current Seat Belt and Child Safety Seat Usage
2005	10	9	1	0	90	10
2006	6	5	1	0	83	8
2007	3	2	1	0	67	2
2008	7	5	2	0	71	8
2009	4	0	4	0	0	0

*Percent Based Only Where Restraint Use Was Known

**Lives Saved Estimates

[Back To The Table of Contents](#)



Motorcyclist Fatalities by Helmet Use and Lives Saved Estimates

Year	Fatalities					Lives Saved Estimates**	
	Total	Helmeted	Unhelmeted	Unknown Helmet Use	Percent Known Helmeted*	Lives Saved at Current Helmet Use	Additional Lives Savable at 100% Helmet Usage
2005	87	4	83	0	5	2	31
2006	74	13	61	0	18	8	23
2007	90	33	57	0	37	20	21
2008	98	30	68	0	31	18	26
2009	88	27	60	1	31	16	23

*Percent Based Only Where Helmet Use Was Known

**Lives Saved Estimates (Sum of columns may not equal other published numbers due to rounding)

[Back To The Table of Contents](#)



Fatalities by Person Type

Person Type		2005		2006		2007		2008		2009	
		#	%*	#	%*	#	%*	#	%*	#	%*
Occupants	Passenger Car	252	42	180	34	189	34	178	32	138	30
	Light Truck - Pickup	85	14	83	16	73	13	80	15	58	12
	Light Truck - Utility	89	15	79	15	84	15	88	16	89	19
	Light Truck - Van	18	3	25	5	21	4	32	6	19	4
	Light Truck - Other	0	0	1	0	0	0	0	0	0	0
	Large Truck	16	3	19	4	22	4	10	2	10	2
	Other/Unknown Occupants	2	0	2	0	1	0	0	0	2	0
	<i>Total Occupants</i>	462	76	389	73	390	70	388	71	316	68
Motorcyclists	<i>Total Motorcyclists</i>	87	14	74	14	90	16	98	18	88	19
Nonoccupants	Pedestrian	48	8	59	11	58	10	43	8	47	10
	Bicyclist and Other Cyclist	8	1	10	2	11	2	12	2	10	2
	Other/Unknown Nonoccupants	1	0	3	1	5	1	7	1	4	1
	<i>Total Nonoccupants</i>	57	9	72	13	74	13	62	11	61	13
Total	<i>Total</i>	606	100	535	100	554	100	548	100	465	100

*Sum of Percents May Not = 100 Due to Individual Cell Rounding

[Back To The Table of Contents](#)



Fatalities by Crash Type

Crash Type	2005	2006	2007	2008	2009
Total Fatalities (All Crashes)*	606	535	554	548	465
- (1) Single Vehicle	346	315	306	314	279
- (2) Involving a Large Truck	68	67	82	68	40
- (3) Involving Speeding	204	182	224	210	171
- (4) Involving a Rollover	256	227	225	204	186
- (5) Involving a Roadway Departure	364	306	307	323	274
- (6) Involving an Intersection (or Intersection Related)	149	119	149	125	98

(1) Crash Involved Only One Coded Vehicle

(2) Crash Involved at Least One Large Truck

(3) Crash Involved at Least One Vehicle Speeding

(4) Crash Involved at Least One Vehicle That Rolled Over

(5) Crash Involved at Least One Vehicle That Departed the Roadway (FHWA Definition)

(6) Crash Occured Within an Intersection or Within the Approach to an Intersection

*A Fatality Can Be in More Than One Category. Therefore Sum of the Individual Cells Will Not Equal the Total Due to Double Counting

[Back To The Table of Contents](#)



Motorcyclist Fatalities by Age

Year	Age						Total
	<20	20-29	30-39	40-49	50-59	>59	
2005	2	18	19	18	21	9	87
2006	3	13	13	25	13	7	74
2007	4	15	15	27	18	11	90
2008	5	25	17	22	19	10	98
2009	3	19	9	17	25	15	88

[Back To The Table of Contents](#)

Motorcyclist Fatalities Per 100,000 Registered Motorcycles

Year	Motorcyclist Fatalities	Total Motorcycle Registrations*	Motorcyclist Fatalities Per 100,000 Motorcycle Registrations
2005	87	117,159	74.26
2006	74	117,159	63.16
2007	90	111,468	80.74
2008	98	118,486	82.71
2009	88	94,746	92.88

*Data Source: FHWA

[Back To The Table of Contents](#)



Fatalities by Person Type and Race/Hispanic Origin

Person Type by Race/Hispanic Origin		2005	2006	2007	2008
Occupants (All Vehicle Types)	Hispanic	103	87	92	115
	White Non-Hispanic	417	334	357	340
	Black, Non-Hispanic	16	18	24	11
	American Indian, Non-Hispanic/Unknown	4	8	3	5
	Asian, Non-Hispanic/Unknown	0	1	0	3
	All Other Non-Hispanic or Race	7	12	4	12
	Unknown Race and Unknown Hispanic	2	3	0	0
	Total	549	463	480	486
Non-Occupants (Pedestrians, Pedalcyclists and Other/Unknown NonOccupants)					
	Hispanic	14	25	22	14
	White Non-Hispanic	35	43	46	38
	Black, Non-Hispanic	5	2	4	6
	American Indian, Non-Hispanic/Unknown	2	2	0	3
	Asian, Non-Hispanic/Unknown	0	0	0	1
	All Other Non-Hispanic or Race	0	0	2	0
	Unknown Race and Unknown Hispanic	1	0	0	0
Total	57	72	74	62	
Total	606	535	554	548	

2009 Race/Hispanic Origin Data is Not Yet Complete

[Back To The Table of Contents](#)



5 Year Trend For The Top 10 Counties of 2009 - Fatalities

Counties by 2009 Ranking		Fatalities					Percent of Total				
		2005	2006	2007	2008	2009	2005	2006	2007	2008	2009
1	El Paso County	47	31	39	47	42	8	6	7	9	9
2	Weld County	46	38	47	45	39	8	7	9	8	8
3	Denver County	53	35	39	46	36	9	7	7	8	8
4	Arapahoe County	35	40	36	44	29	6	7	7	8	6
5	Jefferson County	47	45	39	39	28	8	8	7	7	6
6	Larimer County	27	28	25	26	27	4	5	5	5	6
7	Adams County	54	38	39	39	22	9	7	7	7	5
8	Pueblo County	16	15	23	26	22	3	3	4	5	5
9	Boulder County	23	18	15	23	19	4	3	3	4	4
10	Mesa County	19	24	29	14	17	3	4	5	3	4
Sub Total 1.*	Top Ten Counties	374	318	332	356	281	62	59	60	65	61
Sub Total 2.**	All Other Counties	230	217	218	190	183	38	41	40	35	39
Total	All Counties	604	535	550	546	464	100	100	100	100	100

*This Sub Total is the Total for the Top Ten Counties

**This Sub Total is the Total for all Counties Outside the Top Ten

[Back To The Table of Contents](#)



5 Year Trend For The Top 10 Counties of 2009 - Fatalities Year to Year Percent Change

Counties by 2009 Ranking		Fatalities					Percent Change From Previous Year				
		2005	2006	2007	2008	2009	2006	2007	2008	2009	
1	El Paso County	47	31	39	47	42	-34	26	21	-11	
2	Weld County	46	38	47	45	39	-17	24	-4	-13	
3	Denver County	53	35	39	46	36	-34	11	18	-22	
4	Arapahoe County	35	40	36	44	29	14	-10	22	-34	
5	Jefferson County	47	45	39	39	28	-4	-13	0	-28	
6	Larimer County	27	28	25	26	27	4	-11	4	4	
7	Adams County	54	38	39	39	22	-30	3	0	-44	
8	Pueblo County	16	15	23	26	22	-6	53	13	-15	
9	Boulder County	23	18	15	23	19	-22	-17	53	-17	
10	Mesa County	19	24	29	14	17	26	21	-52	21	
Sub Total 1.*		Top Ten Counties	374	318	332	356	281	-15	4	7	-21
Sub Total 2.**		All Other Counties	230	217	218	190	183	-6	0	-13	-4
Total		All Counties	604	535	550	546	464	-11	3	-1	-15

*This Sub Total is the Total for the Top Ten Counties

**This Sub Total is the Total for all Counties Outside the Top Ten

[Back To The Table of Contents](#)



5 Year Trend For The Top 10 Counties of 2009 - Fatality Rates

Median Rate for all U.S. Counties: 18.23

Counties by 2009 Ranking		Fatalities Per 100,000 Population				
		2005	2006	2007	2008	2009
1	Kiowa County	72.20	147.06	153.26	314.47	323.10
2	Baca County	125.66	204.50	26.04	132.21	161.16
3	Lincoln County	73.11	18.77	19.06	96.01	154.77
4	Mineral County	650.05	0.00	207.68	105.26	109.65
5	Custer County	51.56	51.77	50.45	50.71	100.00
6	Costilla County	59.35	0.00	30.28	92.42	95.30
7	Sedgwick County	80.94	0.00	42.92	0.00	85.98
8	Huerfano County	51.53	77.18	64.89	51.51	79.39
9	Jackson County	70.32	0.00	146.09	223.88	73.05
10	Ouray County	0.00	142.21	45.45	43.59	65.19
	Sub Rate 1.* Top Ten Counties	119.63	110.25	90.15	94.79	111.62
	Sub Rate 2.** All Other Counties	12.40	10.26	10.99	10.53	8.63
	Total Rate All Counties	13.10	11.38	11.49	11.19	9.34

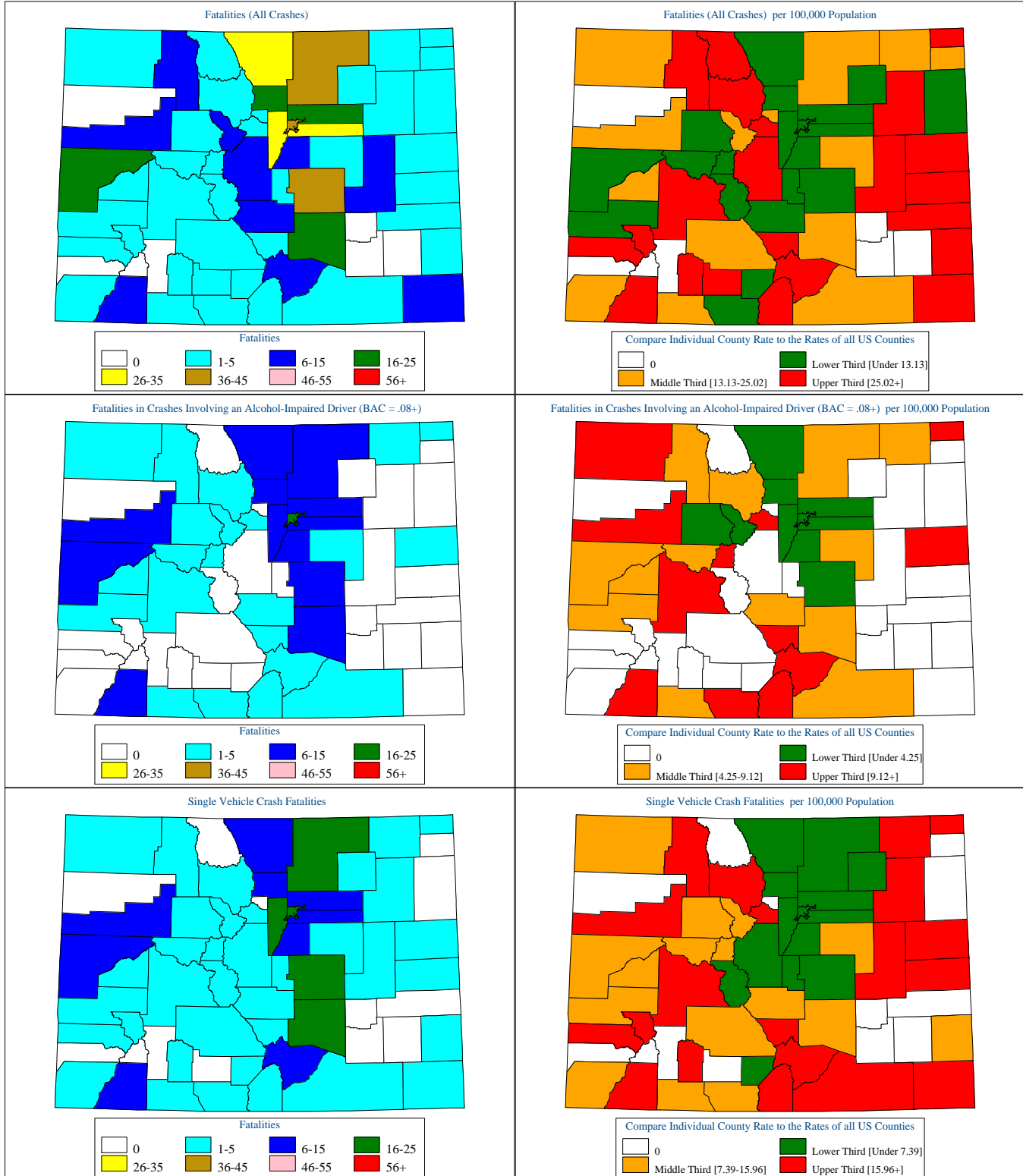
*This Sub Rate is the Rate for the Top Ten Counties

**This Sub Rate is the Rate for all Counties Outside the Top Ten

[Back To The Table of Contents](#)



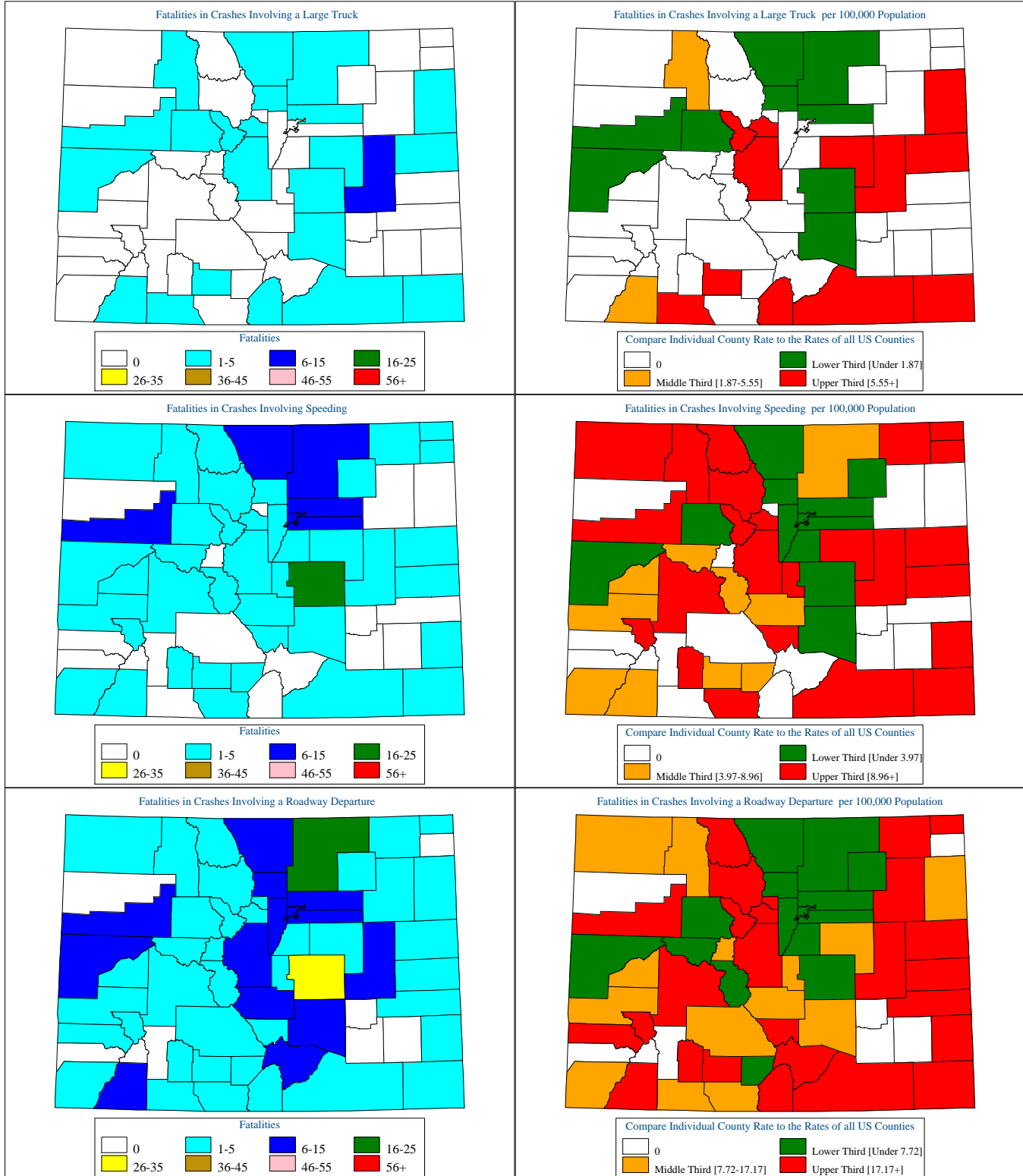
Colorado Motor Vehicle Crash Fatality Maps for 2009



[Back To The Table of Contents](#)



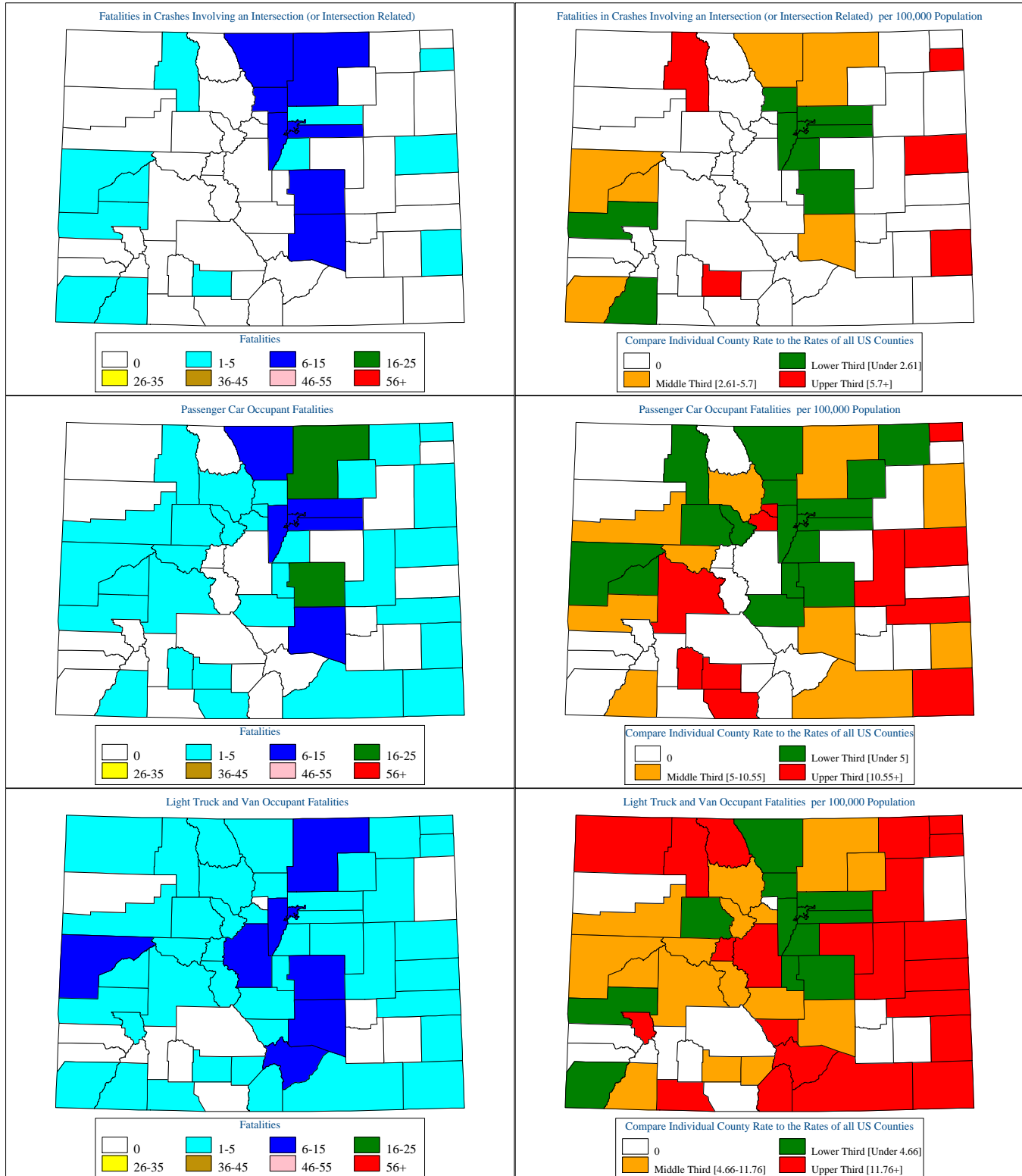
Colorado Motor Vehicle Crash Fatality Maps for 2009



[Back To The Table of Contents](#)



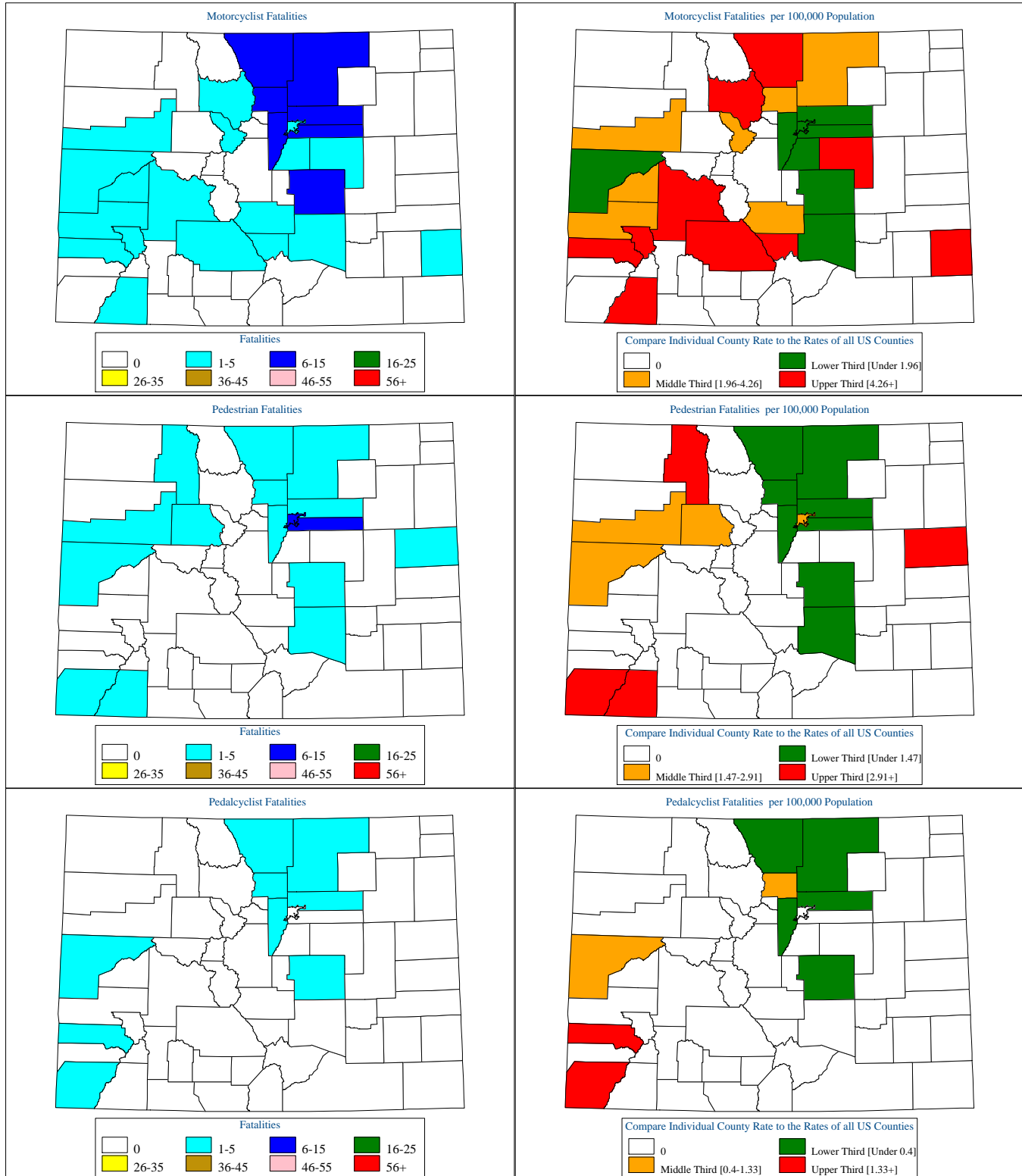
Colorado Motor Vehicle Crash Fatality Maps for 2009



[Back To The Table of Contents](#)



Colorado Motor Vehicle Crash Fatality Maps for 2009



[Back To The Table of Contents](#)