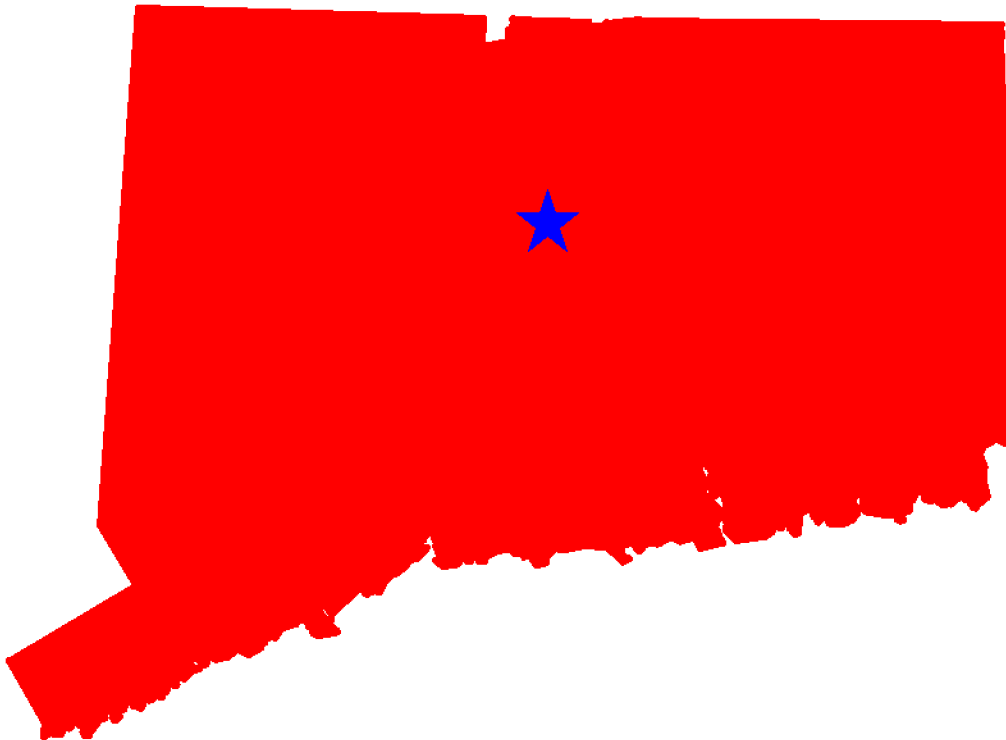




Traffic Safety Facts Connecticut 2004-2008



This Report Contains Data From the Following Sources:

- Fatality Data - NCSA Fatality Analysis Reporting System (FARS): 2004-2007 Final File and 2008 Annual Report File (ARF)
- Observed Safety Belt Data - NCSA National Occupant Protection Use Survey (NOPUS) and the Connecticut State Survey
- Vehicle Miles of Travel Data and Motorcycle Registrations - Federal Highway Administration (FHWA)
- Population Data - U.S. Bureau of the Census



Table of Contents

3. Traffic Safety Performance Measures
4. Fatality Rates: Connecticut , U.S. and Best State
5. Alcohol-Related Fatalities: Connecticut , U.S. and Best State (Old Definition)
6. Alcohol-Impaired Driving Fatalities: Connecticut , U.S. and Best State (New Definition)
7. Fatalities Per 100 Million VMT: Connecticut , U.S.
7. Alcohol-Impaired Driving Fatalities Per 100 Million VMT: Connecticut , U.S.
8. Blood Alcohol Concentration (BAC) Reporting Rates For Drivers/Motorcycle Rider (Operators) Involved in Fatal Crashes: Connecticut , U.S. and Best State
9. Front Seat Passenger Vehicle Occupants, Aged 5 and Over, by Restraint Use: Fatalities and Observed Connecticut , U.S. and Best State
10. Front Seat Passenger Vehicle Occupant Fatalities, Aged 5 and Over, by Percent Restraint Use: Connecticut , U.S.
10. Front Seat Passenger Vehicle Occupants Observed, Aged 5 and Over, by Percent Restraint Use: Connecticut , U.S.
11. Passenger Vehicle Occupant Fatalities Aged 5 and Above by Restraint Use and Lives Saved Estimates
11. Passenger Vehicle Occupant Fatalities Aged Under 5 by Restraint Use and Lives Saved Estimates
12. Motorcyclist Fatalities by Helmet Use and Lives Saved Estimates
13. Fatalities by Person Type
14. Fatalities by Crash Type
15. Motorcyclist Fatalities by Age
15. Motorcyclist Fatalities Per 100,000 Registered Motorcycles
16. Fatalities by Person Type and Race/Hispanic Origin
17. Top 10 Counties for Fatalities
18. Top 10 Counties for Fatalities: Year to Year Percent Change
19. Top 10 Counties for Fatality Rates
20. Motor Vehicle Crash Fatality Maps:
Total Fatalities, Alcohol-Impaired Driving Fatalities, Single Vehicle Crash Fatalities
21. Motor Vehicle Crash Fatality Maps:
Large Truck Crash Fatalities, Speeding Involved Fatalities, Roadway Departure Fatalities
22. Motor Vehicle Crash Fatality Maps:
Intersection Fatalities, Passenger Car Occupants, Light Truck and Van Occupants
23. Motor Vehicle Crash Fatality Maps:
Motorcyclist Fatalities, Pedestrian Fatalities, Pedestrian Fatalities



Traffic Safety Performance (Core Outcome) Measures* For Connecticut

Core Outcome Measures		Year				
		2004	2005	2006	2007	2008
Traffic Fatalities	Total	294	278	311	296	264
	Rural	70	50	49	47	51
	Urban	222	228	262	249	213
	Unknown	2	0	0	0	0
Fatalities Per 100 Million Vehicle Miles Driven	Total	0.93	0.88	0.98	0.92	0.83
	Rural	1.76	1.26	1.26	1.18	1.28
	Urban	0.80	0.82	0.94	0.89	0.77
Passenger Vehicle Occupant Fatalities (All Seat Positions)	Total	195	187	207	208	163
	Restrained	80	75	93	97	68
	Unrestrained	94	87	72	84	70
	Unknown	21	25	42	27	25
Alcohol-Impaired Driving Fatalities (BAC=.08+)**		112	98	113	111	86
Speeding-Related Fatalities		99	96	95	99	83
Motorcyclist Fatalities	Total	58	43	57	43	57
	Helmeted	18	14	20	15	20
	Unhelmeted	39	27	36	28	36
	Unknown	1	2	1	0	1
Drivers Involved in Fatal Crashes	Total	413	405	452	403	355
	Aged Under 15	0	1	0	0	0
	Aged 15-20	61	45	61	54	32
	Aged Under 21	61	46	61	54	32
	Aged 21 and Over	344	357	383	345	318
	Unknown Age	8	2	8	4	5
Pedestrian Fatalities		27	34	38	32	37

*These Performance Measures Were Developed By The National Highway Traffic Safety Administration (NHTSA) and the Governors Highway Safety Association (GHSA) (See Publication: DOT HS 811 025)

**Based on the BAC of All Involved Drivers and Motorcycle Riders (Operators) Only

[Back To The Table of Contents](#)



Fatality Rates: Connecticut , U.S. and Best State

Year		Fatalities	Total Vehicle Miles Traveled (Millions)	Fatalities Per 100 Million Vehicle Miles Traveled	Total Population	Fatalities Per 100,000 Population
2004	Connecticut	294	31,608	0.93	3,475,351	8.46
	US	42,836	2,964,788	1.44	292,892,127	14.63
	Best State*			0.87		7.39
2005	Connecticut	278	31,675	0.88	3,478,714	7.99
	US	43,510	2,989,430	1.46	295,560,549	14.72
	Best State*			0.80		6.85
2006	Connecticut	311	31,743	0.98	3,487,896	8.92
	US	42,708	3,014,371	1.42	298,362,973	14.31
	Best State*			0.78		6.32
2007	Connecticut	296	32,053	0.92	3,489,868	8.48
	US	41,259	3,032,399	1.36	301,290,332	13.69
	Best State*			0.79		6.55
2008	Connecticut	264	31,737	0.83	3,501,252	7.54
	US	37,261	2,973,509	1.25	304,059,724	12.25
	Best State*			0.67		5.59

*State (or States) With Lowest Rates: Lowest VMT and Population Rates Could Be in Different States

[Back To The Table of Contents](#)



Fatalities By The Highest Blood Alcohol Concentration (BAC) in the Crash**:
Connecticut, U.S. and Best State
(Old Definition)

Year		Total Fatalities in all Crashes	Highest BAC level in the Crash				
			BAC = .01+		BAC = .08+		Per 100 Million VMT
			Number	Percent	Number	Percent	
2004	Connecticut	294	131	45	119	40	0.38
	US	42,836	16,919	39	14,593	34	0.49
	Best State*			25		21	0.27
2005	Connecticut	278	130	47	109	39	0.34
	US	43,510	17,590	40	15,102	35	0.51
	Best State*			14		12	0.14
2006	Connecticut	311	138	44	122	39	0.38
	US	42,708	17,738	42	15,144	35	0.50
	Best State*			24		20	0.22
2007	Connecticut	296	137	46	119	40	0.37
	US	41,259	17,158	42	14,603	35	0.48
	Best State*			24		21	0.23
2008	Connecticut	264	112	42	94	36	0.30
	US	37,261	15,438	41	13,294	36	0.45
	Best State*			21		16	0.16

*State (or States) With Lowest Percents: Lowest Percents Could Be in Different States

**Based on the BAC of All Involved Drivers, Motorcycle Riders (Operators), Pedalcyclists and Pedestrians

[Back To The Table of Contents](#)



Alcohol-Impaired Driving Fatalities**:
Connecticut, U.S. and Best State
(New Definition)

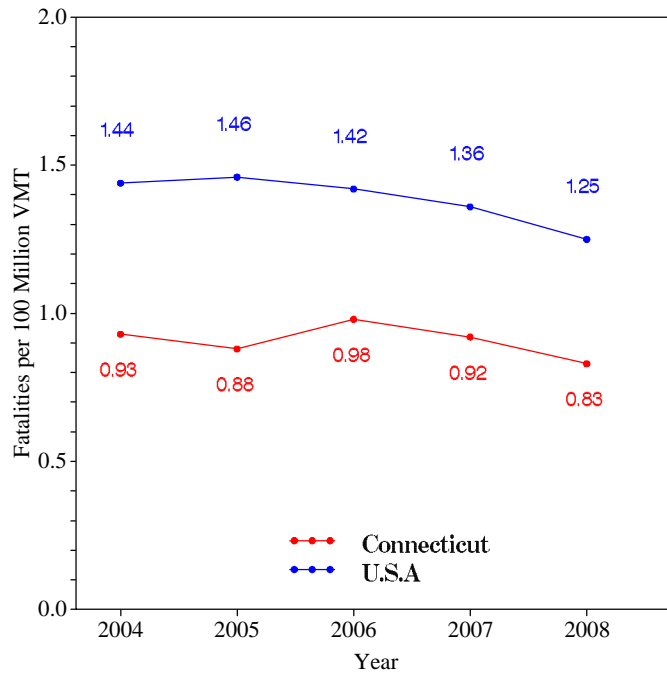
Year		Total Fatalities in all Crashes	Alcohol-Impaired Driving Fatalities (BAC = .08+)		
			Number	Percent	Per 100 Million VMT
2004	Connecticut	294	112	38	0.35
	US	42,836	13,099	31	0.44
	Best State*			20	0.25
2005	Connecticut	278	98	35	0.31
	US	43,510	13,582	31	0.45
	Best State*			12	0.13
2006	Connecticut	311	113	36	0.36
	US	42,708	13,491	32	0.45
	Best State*			18	0.20
2007	Connecticut	296	111	38	0.35
	US	41,259	13,041	32	0.43
	Best State*			19	0.21
2008	Connecticut	264	86	33	0.27
	US	37,261	11,773	32	0.40
	Best State*			16	0.16

*State (or States) With Lowest Percents: Lowest Percents Could Be in Different States
**Based on the BAC of All Involved Drivers and Motorcycle Riders (Operators) Only

[Back To The Table of Contents](#)

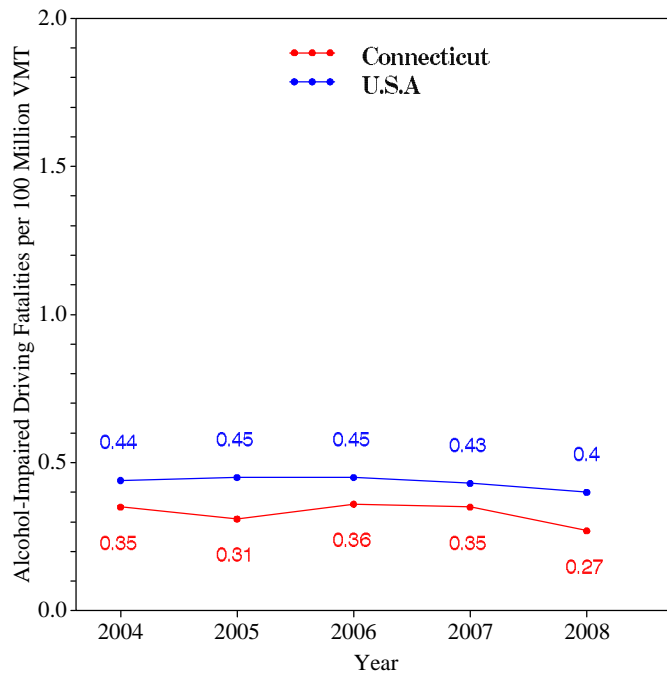


Fatalities per 100 Million VMT



[Back To The Table of Contents](#)

Alcohol-Impaired Driving Fatalities per 100 Million VMT



[Back To The Table of Contents](#)



**Blood Alcohol Concentration (BAC) Reporting Rates
For Drivers/Motorcycle Riders (Operators)
Involved in Fatal Crashes:
Connecticut , U.S. and Best State**

Year		Surviving Drivers/Motorcycle Riders			Killed Drivers/Motorcycle Riders			Total Drivers/Motorcycle Riders		
		Total	With Blood Alcohol Concentration (BAC) Results Reported to FARS		Total	With Blood Alcohol Concentration (BAC) Results Reported to FARS		Total	With Blood Alcohol Concentration (BAC) Results Reported to FARS	
			Number	Percent		Number	Percent		Number	Percent
2004	Connecticut	211	43	20	202	119	59	413	162	39
	US	31,524	8,215	26	26,871	18,275	68	58,395	26,490	45
	Best State*			80			97			82
2005	Connecticut	225	54	24	180	126	70	405	180	44
	US	31,729	7,415	23	27,491	18,773	68	59,220	26,188	44
	Best State*			77			98			84
2006	Connecticut	232	62	27	220	190	86	452	252	56
	US	30,498	7,482	25	27,348	18,911	69	57,846	26,393	46
	Best State*			81			99			85
2007	Connecticut	210	68	32	193	171	89	403	239	59
	US	29,449	7,631	26	26,570	19,434	73	56,019	27,065	48
	Best State*			82			100			84
2008	Connecticut	180	38	21	175	139	79	355	177	50
	US	26,011	6,677	26	24,175	17,045	71	50,186	23,722	47
	Best State*			80			95			84

*State (or States) With Highest Percents: Highest Percents Could Be in Different States

[Back To The Table of Contents](#)



Daytime Front Seat (Outboard Only) Passenger Vehicle Occupants, Aged 5 and Over, by Restraint Use:
Fatalities and Observed
Connecticut , U.S. and Best State

Year		Fatalities - Restrained**	Observed - Restrained***
		Percent	Percent
2004	Connecticut	61	83
	US	56	80
	Best State*	82	95
2005	Connecticut	57	82
	US	55	82
	Best State*	88	95
2006	Connecticut	61	84
	US	55	81
	Best State*	77	96
2007	Connecticut	59	86
	US	57	82
	Best State*	82	98
2008	Connecticut	71	88
	US	56	83
	Best State*	78	97

*State With Highest Percent. Fatal Crash and Observed Percents Can Be Different States

**Percent Based Only Where Restraint Use Was Known

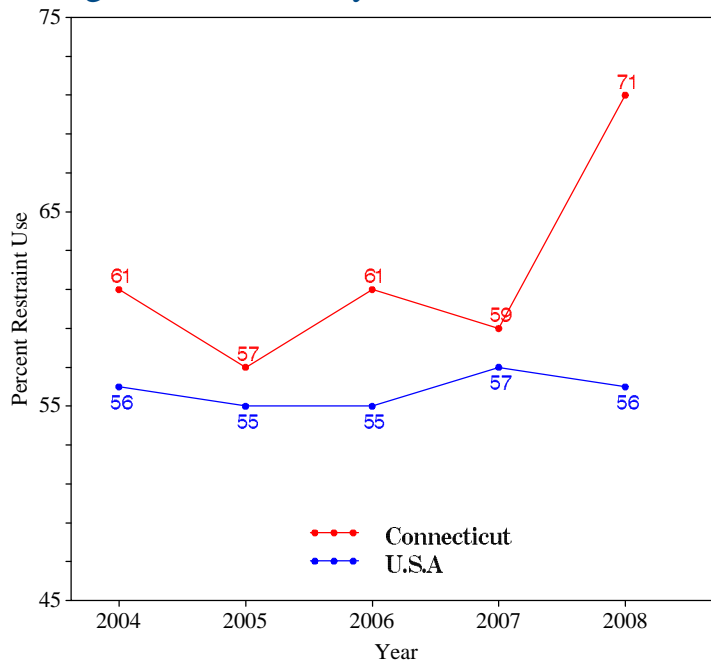
***USA Data: National Occupant Protection Use Survey. Connecticut Data: State Survey

Note: The Purpose of this Table is to Compare (as closely as possible) the Use of Restraint Systems by Fatally Injured Occupants with Occupants in all Driving Situations

[Back To The Table of Contents](#)



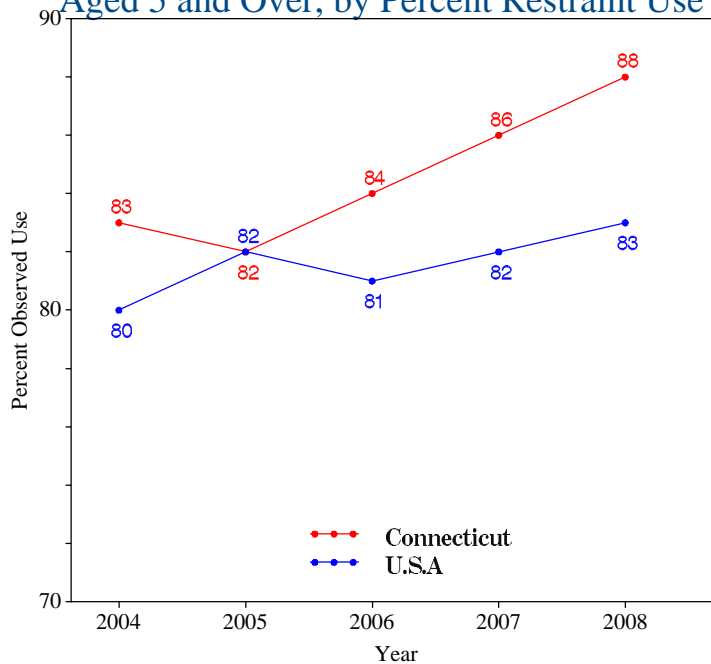
Daytime Front Seat (Outboard Only) Passenger Vehicle Occupant Fatalities, Aged 5 and Over, by Percent Restraint Use*



*Percent Based Only Where Restraint Use Was Known

[Back To The Table of Contents](#)

Daytime Front Seat (Outboard Only) Passenger Vehicle Occupants Observed, Aged 5 and Over, by Percent Restraint Use*



*USA Data: National Occupant Protection Use Survey. Connecticut Data: State Survey

[Back To The Table of Contents](#)



Passenger Vehicle Occupant Fatalities Age 5 and Above by Restraint Use and Lives Saved Estimates

Year	Fatalities Age 5 and Above					Lives Saved Estimates**	
	Total	Restrained	Unrestrained	Unknown Restraint Use	Percent Known Restrained*	Lives Saved at Current Belt Use	Additional Lives Savable at 100% Belt Usage
2004	193	79	94	20	46	92	31
2005	185	75	86	24	47	88	31
2006	205	91	72	42	56	117	37
2007	206	97	83	26	54	101	31
2008	162	68	69	25	50	89	24

*Percent Based Only Where Restraint Use Was Known

**Lives Saved Estimates (Sum of columns may not equal other published numbers due to rounding)

[Back To The Table of Contents](#)

Passenger Vehicle Occupant Fatalities Age 4 and Under by Restraint Use and Lives Saved Estimates

Year	Fatalities Age 4 and Under					Lives Saved Estimates**
	Total	Restrained	Unrestrained	Unknown Restraint Use	Percent Known Restrained*	Lives Saved at Current Seat Belt and Child Safety Seat Usage
2004	1	1	0	0	100	1
2005	2	0	1	1	0	0
2006	2	2	0	0	100	3
2007	1	0	1	0	0	0
2008	1	0	1	0	0	0

*Percent Based Only Where Restraint Use Was Known

**Lives Saved Estimates

[Back To The Table of Contents](#)



Motorcyclist Fatalities by Helmet Use and Lives Saved Estimates

Year	Fatalities					Lives Saved Estimates**	
	Total	Helmeted	Unhelmeted	Unknown Helmet Use	Percent Known Helmeted*	Lives Saved at Current Helmet Use	Additional Lives Savable at 100% Helmet Usage
2004	58	18	39	1	32	11	15
2005	43	14	27	2	34	9	10
2006	57	20	36	1	36	11	13
2007	43	15	28	0	35	8	10
2008	57	20	36	1	36	12	14

*Percent Based Only Where Helmet Use Was Known

**Lives Saved Estimates (Sum of columns may not equal other published numbers due to rounding)

[Back To The Table of Contents](#)



Fatalities by Person Type

Person Type		2004		2005		2006		2007		2008	
		#	%*	#	%*	#	%*	#	%*	#	%*
Occupants	Passenger Car	135	46	139	50	160	51	156	53	114	43
	Light Truck - Pickup	24	8	20	7	16	5	16	5	12	5
	Light Truck - Utility	28	10	22	8	20	6	30	10	25	9
	Light Truck - Van	8	3	6	2	11	4	6	2	12	5
	Large Truck	4	1	6	2	2	1	5	2	2	1
	Other/Unknown Occupants	5	2	3	1	2	1	2	1	0	0
	<i>Total Occupants</i>	204	69	196	71	211	68	215	73	165	63
Motorcyclists	<i>Total Motorcyclists</i>	58	20	43	15	57	18	43	15	57	22
Nonoccupants	Pedestrian	27	9	34	12	38	12	32	11	37	14
	Bicyclist and Other Cyclist	5	2	3	1	5	2	5	2	5	2
	Other/Unknown Nonoccupants	0	0	2	1	0	0	1	0	0	0
	<i>Total Nonoccupants</i>	32	11	39	14	43	14	38	13	42	16
Total	<i>Total</i>	294	100	278	100	311	100	296	100	264	100

*Sum of Percents May Not = 100 Due to Individual Cell Rounding

[Back To The Table of Contents](#)



Fatalities by Crash Type

Crash Type	2004	2005	2006	2007	2008
Total Fatalities (All Crashes)*	294	278	311	296	264
- (1) Single Vehicle	173	171	176	165	166
- (2) Involving a Large Truck	25	21	29	28	22
- (3) Involving Speeding	99	96	95	99	83
- (4) Involving a Rollover	68	75	58	63	56
- (5) Involving a Roadway Departure	176	148	158	157	145
- (6) Involving an Intersection (or Intersection Related)	57	50	73	63	52

(1) Crash Involved Only One Coded Vehicle

(2) Crash Involved at Least One Large Truck

(3) Crash Involved at Least One Vehicle Speeding

(4) Crash Involved at Least One Vehicle That Rolled Over

(5) Crash Involved at Least One Vehicle That Departed the Roadway (FHWA Definition)

(6) Crash Occured Within an Intersection or Within the Approach to an Intersection

*A Fatality Can Be in More Than One Category. Therefore Sum of the Individual Cells Will Not Equal the Total Due to Double Counting

[Back To The Table of Contents](#)



Motorcyclist Fatalities by Age

Year	Age						Total
	<20	20-29	30-39	40-49	50-59	>59	
2004	5	19	13	15	4	2	58
2005	1	9	8	17	6	2	43
2006	3	23	9	11	8	3	57
2007	2	10	9	13	7	2	43
2008	2	20	12	11	10	2	57

[Back To The Table of Contents](#)

Motorcyclist Fatalities Per 100,000 Registered Motorcycles

Year	Motorcyclist Fatalities	Total Motorcycle Registrations*	Motorcyclist Fatalities Per 100,000 Motorcycle Registrations
2004	58	64,754	89.57
2005	43	65,110	66.04
2006	57	64,959	87.75
2007	43	64,848	66.31
2008	57	65,845	86.57

*Data Source: FHWA

[Back To The Table of Contents](#)



Fatalities by Person Type and Race/Hispanic Origin

Person Type by Race/Hispanic Origin		2004	2005	2006	2007
Occupants (All Vehicle Types)	Hispanic	17	6	29	13
	White Non-Hispanic	208	182	204	204
	Black, Non-Hispanic	16	23	19	21
	Asian, Non-Hispanic/Unknown	2	0	2	2
	All Other Non-Hispanic or Race	2	1	2	2
	Unknown Race and Unknown Hispanic	17	27	12	16
	Total	262	239	268	258
Non-Occupants (Pedestrians, Pedalcyclists and Other/Unknown NonOccupants)					
	Hispanic	2	3	2	2
	White Non-Hispanic	23	30	31	20
	Black, Non-Hispanic	1	3	7	7
	Asian, Non-Hispanic/Unknown	0	0	1	1
	All Other Non-Hispanic or Race	0	0	0	0
	Unknown Race and Unknown Hispanic	6	3	2	8
Total	32	39	43	38	
Total	294	278	311	296	

2008 Race/Hispanic Origin Data is Not Yet Complete

[Back To The Table of Contents](#)



5 Year Trend For The Top 10 Counties of 2008 - Fatalities

Counties by 2008 Ranking		Fatalities					Percent of Total				
		2004	2005	2006	2007	2008	2004	2005	2006	2007	2008
1	New Haven County	54	69	65	75	76	18	25	21	25	29
2	Hartford County	57	53	83	66	60	19	19	27	22	23
3	Fairfield County	53	56	58	53	46	18	20	19	18	17
4	Windham County	20	13	23	13	23	7	5	7	4	9
5	New London County	48	25	40	39	18	16	9	13	13	7
6	Litchfield County	28	20	17	19	15	10	7	5	6	6
7	Tolland County	16	22	8	16	14	5	8	3	5	5
8	Middlesex County	18	20	17	15	12	6	7	5	5	5
Sub Total 1.*	Top Ten Counties	294	278	311	296	264	100	100	100	100	100
Total	All Counties	294	278	311	296	264	100	100	100	100	100

*This Sub Total is the Total for the Top Ten Counties

**This Sub Total is the Total for all Counties Outside the Top Ten

[Back To The Table of Contents](#)



5 Year Trend For The Top 10 Counties of 2008 - Fatalities Year to Year Percent Change

Counties by 2008 Ranking		Fatalities					Percent Change From Previous Year			
		2004	2005	2006	2007	2008	2005	2006	2007	2008
1	New Haven County	54	69	65	75	76	28	-6	15	1
2	Hartford County	57	53	83	66	60	-7	57	-20	-9
3	Fairfield County	53	56	58	53	46	6	4	-9	-13
4	Windham County	20	13	23	13	23	-35	77	-43	77
5	New London County	48	25	40	39	18	-48	60	-3	-54
6	Litchfield County	28	20	17	19	15	-29	-15	12	-21
7	Tolland County	16	22	8	16	14	38	-64	100	-13
8	Middlesex County	18	20	17	15	12	11	-15	-12	-20
Sub Total 1.*	Top Ten Counties	294	278	311	296	264	-5	12	-5	-11
Total	All Counties	294	278	311	296	264	-5	12	-5	-11

*This Sub Total is the Total for the Top Ten Counties

**This Sub Total is the Total for all Counties Outside the Top Ten

[Back To The Table of Contents](#)



5 Year Trend For The Top 10 Counties of 2008 - Fatality Rates

Median Rate for all U.S. Counties: 19.59

Counties by 2008 Ranking		Fatalities Per 100,000 Population				
		2004	2005	2006	2007	2008
1	Windham County	17.56	11.29	19.78	11.13	19.60
2	Tolland County	10.98	15.03	5.43	10.84	9.43
3	New Haven County	6.44	8.21	7.72	8.88	8.98
4	Litchfield County	14.92	10.66	9.04	10.12	7.99
5	Middlesex County	11.16	12.35	10.42	9.16	7.28
6	Hartford County	6.56	6.09	9.51	7.54	6.84
7	New London County	18.00	9.43	14.93	14.79	6.80
8	Fairfield County	5.94	6.28	6.51	5.95	5.14
<i>Sub Rate 1.*</i>	<i>Top Ten Counties</i>	8.46	7.99	8.92	8.48	7.54
<i>Total Rate</i>	<i>All Counties</i>	8.46	7.99	8.92	8.48	7.54

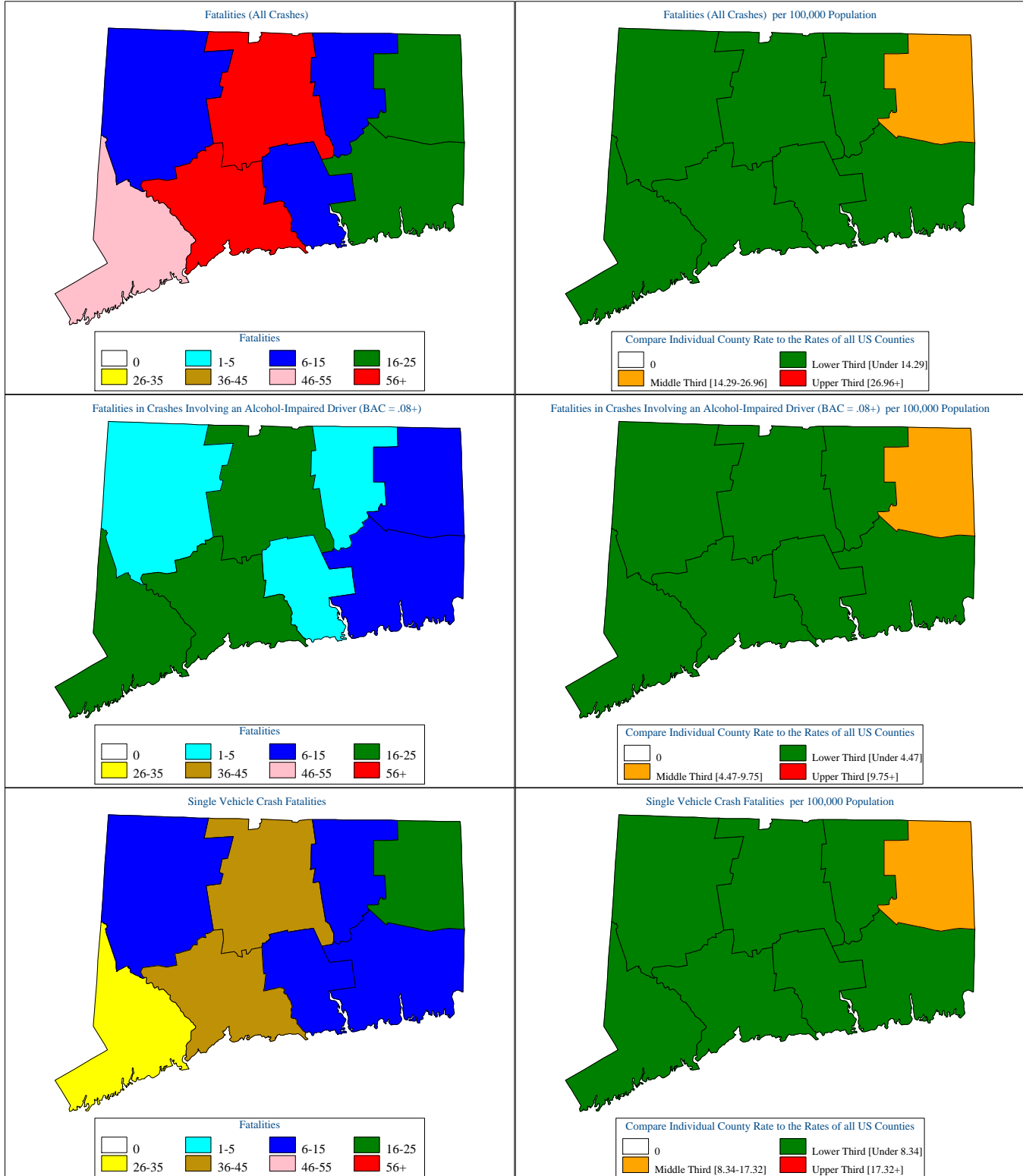
*This Sub Rate is the Rate for the Top Ten Counties

**This Sub Rate is the Rate for all Counties Outside the Top Ten

[Back To The Table of Contents](#)



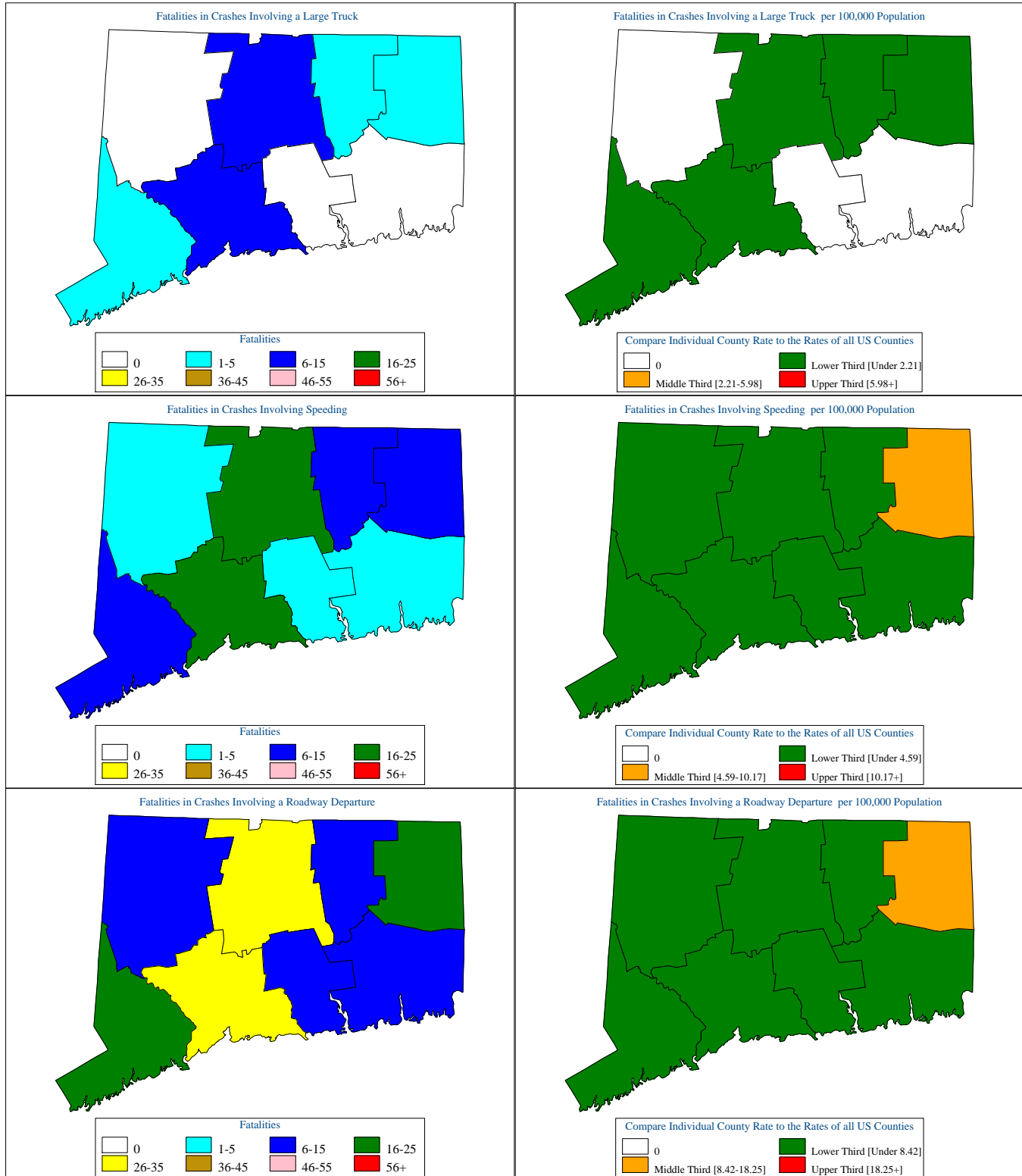
Connecticut Motor Vehicle Crash Fatality Maps for 2008



[Back To The Table of Contents](#)



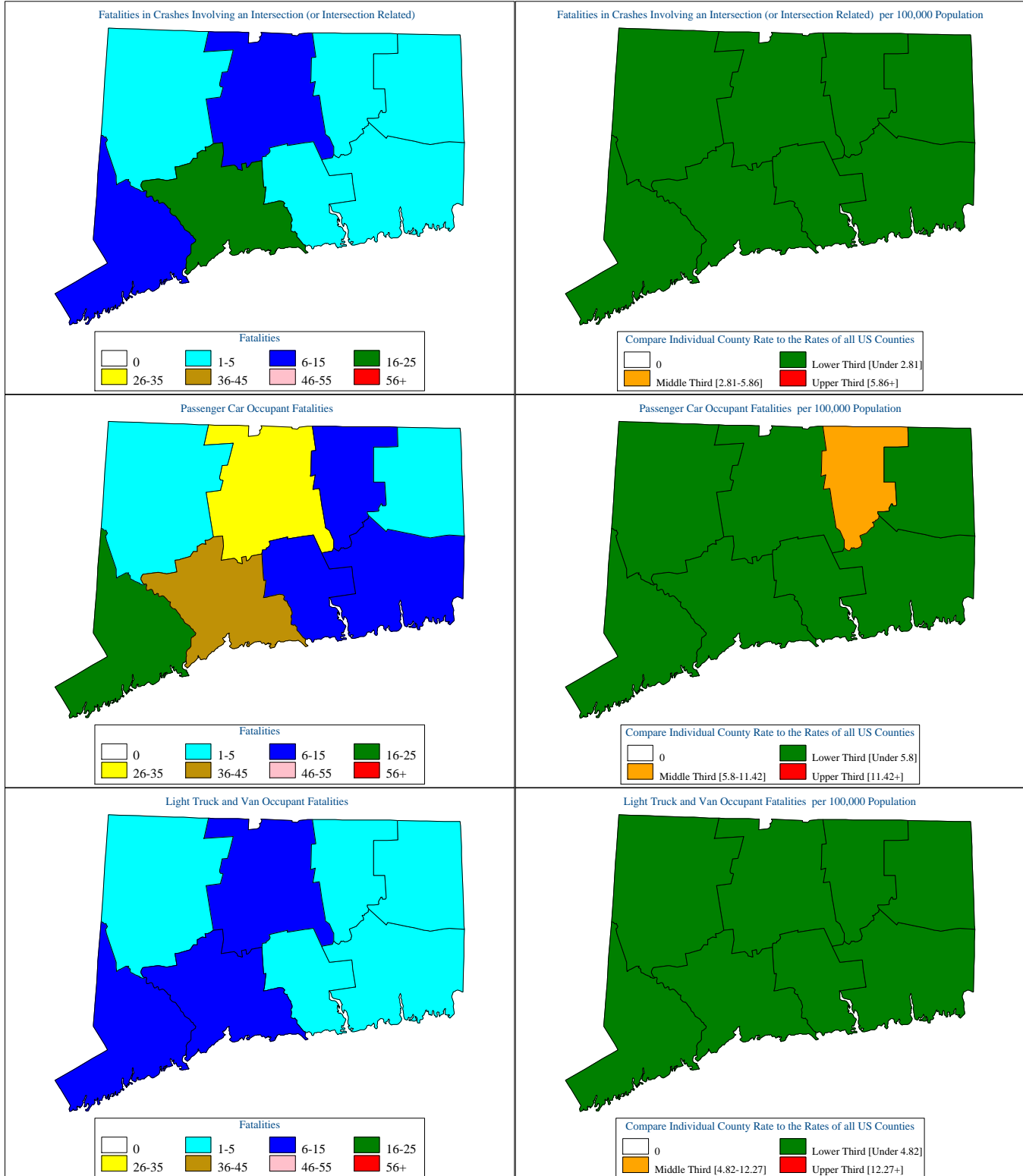
Connecticut Motor Vehicle Crash Fatality Maps for 2008



[Back To The Table of Contents](#)



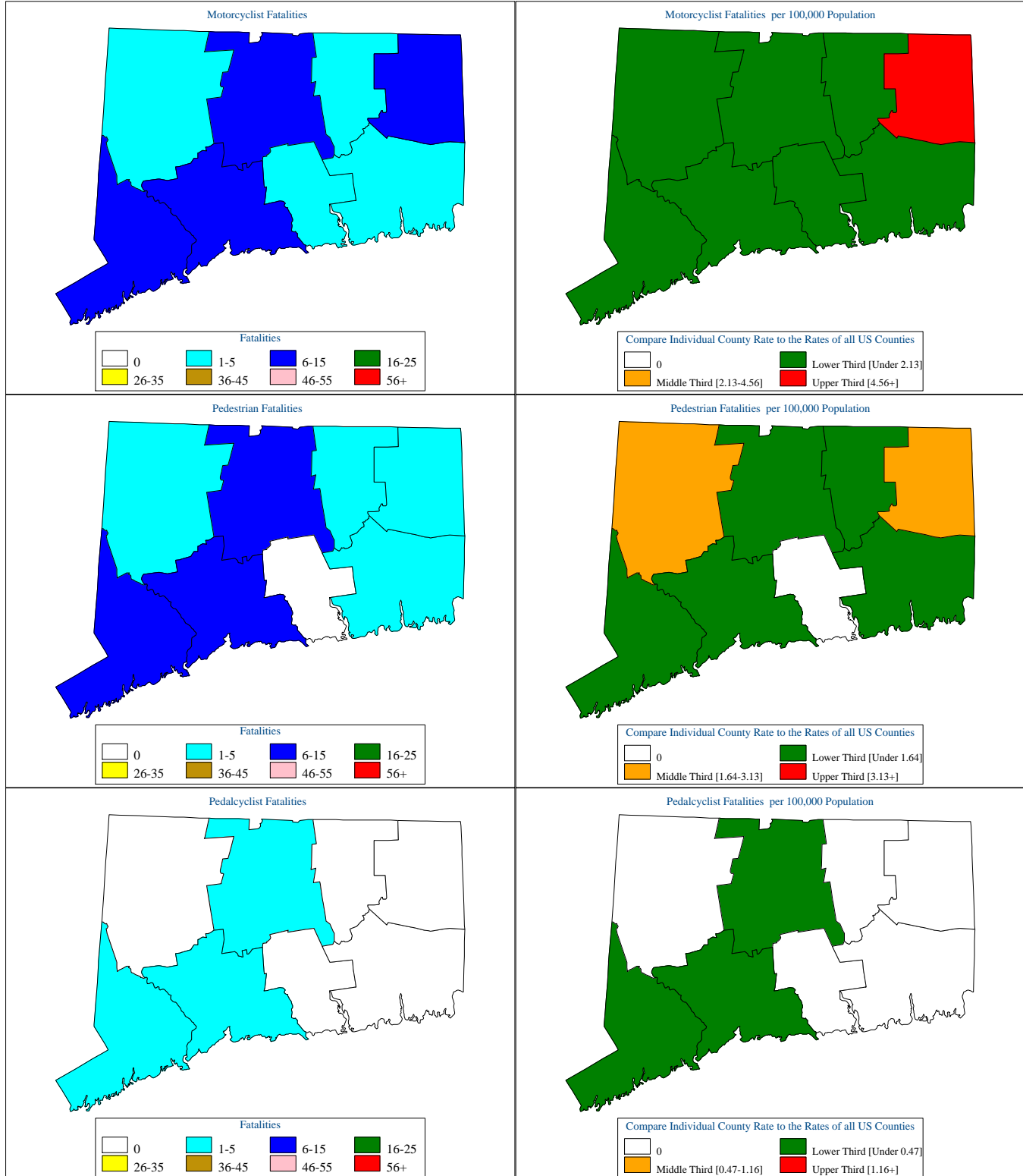
Connecticut Motor Vehicle Crash Fatality Maps for 2008



[Back To The Table of Contents](#)



Connecticut Motor Vehicle Crash Fatality Maps for 2008



[Back To The Table of Contents](#)