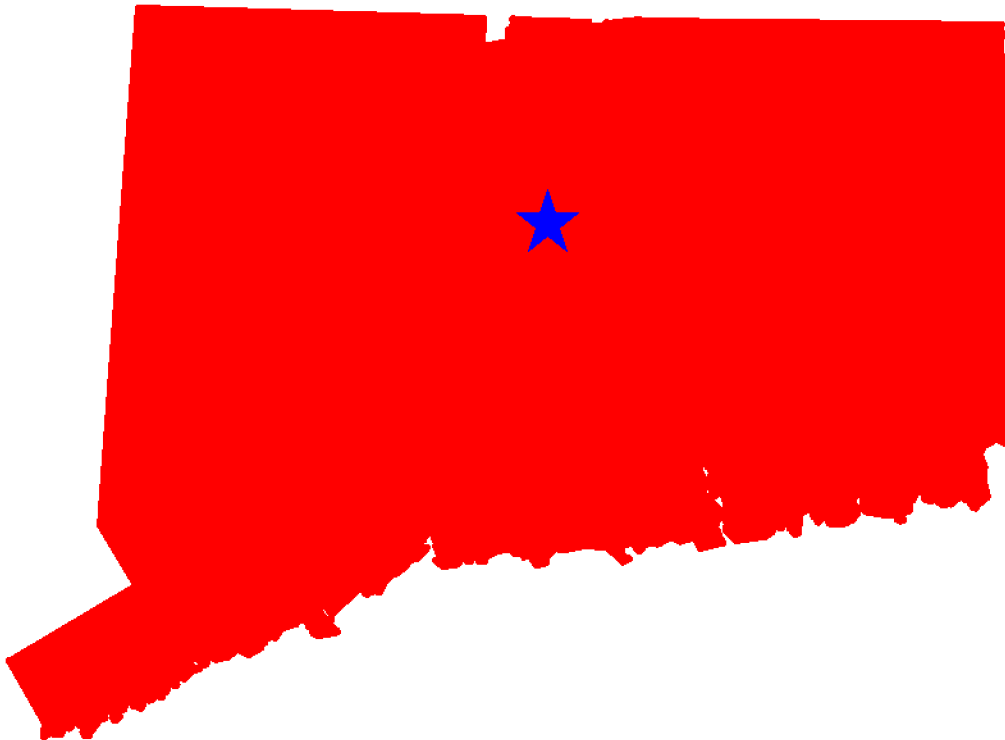




## Traffic Safety Facts Connecticut 2006-2010



This Report Contains Data From the Following Sources:

- Fatality Data - NCSA Fatality Analysis Reporting System (FARS): 2006-2009 Final File and 2010 Annual Report File (ARF)
- Observed Safety Belt Data - NCSA National Occupant Protection Use Survey (NOPUS) and the Connecticut State Survey
- Vehicle Miles of Travel Data and Motorcycle Registrations - Federal Highway Administration (FHWA)
- Population Data - U.S. Bureau of the Census



## Table of Contents (Listed by Table Title and Page Number)

3. Traffic Safety Performance Measures
4. Fatality Rates: Connecticut , U.S. and Best State
5. Alcohol-Related Fatalities: Connecticut , U.S. and Best State (Old Definition)
6. Alcohol-Impaired Driving Fatalities: Connecticut , U.S. and Best State (New Definition)
7. Fatalities Per 100 Million VMT: Connecticut , U.S.
7. Alcohol-Impaired Driving Fatalities Per 100 Million VMT: Connecticut , U.S.
8. Blood Alcohol Concentration (BAC) Reporting Rates For Drivers/Motorcycle Rider (Operators) Involved in Fatal Crashes: Connecticut , U.S. and Best State
9. Front Seat Passenger Vehicle Occupants, Aged 5 and Over, by Restraint Use: Fatalities and Observed Connecticut , U.S. and Best State
10. Front Seat Passenger Vehicle Occupant Fatalities, Aged 5 and Over, by Percent Restraint Use: Connecticut , U.S.
10. Front Seat Passenger Vehicle Occupants Observed, Aged 5 and Over, by Percent Restraint Use: Connecticut , U.S.
11. Passenger Vehicle Occupant Fatalities Aged 5 and Above by Restraint Use and Lives Saved Estimates
11. Passenger Vehicle Occupant Fatalities Aged Under 5 by Restraint Use and Lives Saved Estimates
12. Motorcyclist Fatalities by Helmet Use and Lives Saved Estimates
13. Fatalities by Person Type
14. Fatalities by Crash Type
15. Motorcyclist Fatalities by Age
15. Motorcyclist Fatalities Per 100,000 Registered Motorcycles
16. Fatalities by Person Type and Race/Hispanic Origin
17. Top 10 Counties for Fatalities
18. Top 10 Counties for Fatalities: Year to Year Percent Change
19. Top 10 Counties for Fatality Rates
20. Motor Vehicle Crash Fatality Maps:  
Total Fatalities, Alcohol-Impaired Driving Fatalities, Single Vehicle Crash Fatalities
21. Motor Vehicle Crash Fatality Maps:  
Large Truck Crash Fatalities, Speeding Involved Fatalities, Roadway Departure Fatalities
22. Motor Vehicle Crash Fatality Maps:  
Intersection Fatalities, Passenger Car Occupants, Light Truck and Van Occupants
23. Motor Vehicle Crash Fatality Maps:  
Motorcyclist Fatalities, Pedestrian Fatalities, Pedestrian Fatalities



Traffic Safety Performance (Core Outcome) Measures\* For Connecticut

Core Outcome Measures		Year				
		2006	2007	2008	2009	2010
<b>Traffic Fatalities</b>	<b>Total</b>	311	296	302	224	319
	<b>Rural</b>	49	47	55	36	62
	<b>Urban</b>	262	249	247	188	257
	<b>Unknown</b>	0	0	0	0	0
<b>Fatalities Per 100 Million Vehicle Miles Driven</b>	<b>Total</b>	0.98	0.92	0.95	0.71	1.02
	<b>Rural</b>	1.26	1.18	1.38	0.91	1.59
	<b>Urban</b>	0.94	0.89	0.89	0.68	0.94
<b>Passenger Vehicle Occupant Fatalities (All Seat Positions)</b>	<b>Total</b>	207	208	183	150	202
	<b>Restrained</b>	93	97	77	58	78
	<b>Unrestrained</b>	72	84	77	69	85
	<b>Unknown</b>	42	27	29	23	39
<b>Alcohol-Impaired Driving Fatalities (BAC=.08+)**</b>		113	111	95	97	121
<b>Speeding-Related Fatalities</b>		95	99	99	103	124
<b>Motorcyclist Fatalities</b>	<b>Total</b>	57	43	63	45	52
	<b>Helmeted</b>	20	15	20	17	16
	<b>Unhelmeted</b>	36	28	42	27	36
	<b>Unknown</b>	1	0	1	1	0
<b>Drivers Involved in Fatal Crashes</b>	<b>Total</b>	452	403	404	302	421
	<b>Aged Under 15</b>	0	0	0	1	0
	<b>Aged 15-20</b>	61	54	37	32	32
	<b>Aged Under 21</b>	61	54	37	33	32
	<b>Aged 21 and Over</b>	383	345	362	268	382
	<b>Unknown Age</b>	8	4	5	1	7
<b>Pedestrian Fatalities</b>		38	32	47	26	46

\*These Performance Measures Were Developed By The National Highway Traffic Safety Administration (NHTSA) and the Governors Highway Safety Association (GHSA) (See Publication: DOT HS 811 025)

\*\*Based on the BAC of All Involved Drivers and Motorcycle Riders (Operators) Only

[Back To The Table of Contents](#)



### Fatality Rates: Connecticut , U.S. and Best State

Year		Fatalities	Total Vehicle Miles Traveled (Millions)	Fatalities Per 100 Million Vehicle Miles Traveled	Total Population	Fatalities Per 100,000 Population
2006	Connecticut	311	31,743	0.98	3,517,460	8.84
	US	42,708	3,014,371	1.42	298,379,912	14.31
	Best State*			0.78		6.48
2007	Connecticut	296	32,053	0.92	3,527,270	8.39
	US	41,259	3,031,124	1.36	301,231,207	13.70
	Best State*			0.79		6.53
2008	Connecticut	302	31,737	0.95	3,545,579	8.52
	US	37,423	2,976,528	1.26	304,093,966	12.31
	Best State*			0.67		5.63
2009	Connecticut	224	31,420	0.71	3,561,807	6.29
	US	33,883	2,956,764	1.15	306,771,529	11.05
	Best State*			0.62		4.90
2010	Connecticut	319	31,294	1.02	3,577,073	8.92
	US	32,885	2,966,506	1.11	309,349,689	10.63
	Best State*			0.58		3.97

\*State (or States) With Lowest Rates: Lowest VMT and Population Rates Could Be in Different States

[Back To The Table of Contents](#)



Fatalities By The Highest Blood Alcohol Concentration (BAC) in the Crash\*\*:  
 Connecticut , U.S. and Best State  
 (Old Definition)

Year		Total Fatalities in all Crashes	Highest BAC level in the Crash					
			BAC = .01+			BAC = .08+		
			Number	Percent	Per 100 Million VMT	Number	Percent	Per 100 Million VMT
2006	Connecticut	311	138	44	0.43	122	39	0.38
	US	42,708	17,738	42	0.59	15,144	35	0.50
	Best State*			24	0.26		20	0.22
2007	Connecticut	296	137	46	0.43	119	40	0.37
	US	41,259	17,158	42	0.57	14,603	35	0.48
	Best State*			24	0.27		21	0.23
2008	Connecticut	302	128	42	0.40	105	35	0.33
	US	37,423	15,449	41	0.52	13,258	35	0.45
	Best State*			21	0.21		16	0.16
2009	Connecticut	224	119	53	0.38	103	46	0.33
	US	33,883	14,179	42	0.48	12,149	36	0.41
	Best State*			25	0.24		18	0.17
2010	Connecticut	319	147	46	0.47	130	41	0.42
	US	32,885	13,364	41	0.45	11,560	35	0.39
	Best State*			23	0.21		21	0.18

\*State (or States) With Lowest Percents: Lowest Percents Could Be in Different States

\*\*Based on the BAC of All Involved Drivers, Motorcycle Riders (Operators), Pedalcyclists and Pedestrians

[Back To The Table of Contents](#)



Alcohol-Impaired Driving Fatalities\*\*:  
Connecticut, U.S. and Best State  
(New Definition)

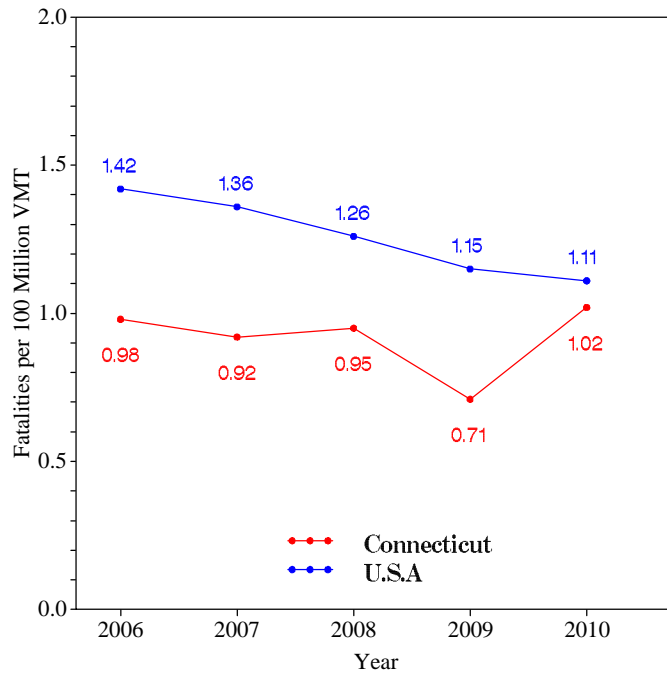
Year		Total Fatalities in all Crashes	Alcohol-Impaired Driving Fatalities (BAC = .08+)		
			Number	Percent	Per 100 Million VMT
2006	Connecticut	311	113	36	0.36
	US	42,708	13,491	32	0.45
	Best State*			18	0.20
2007	Connecticut	296	111	38	0.35
	US	41,259	13,041	32	0.43
	Best State*			19	0.21
2008	Connecticut	302	95	31	0.30
	US	37,423	11,711	31	0.39
	Best State*			16	0.16
2009	Connecticut	224	97	43	0.31
	US	33,883	10,759	32	0.36
	Best State*			17	0.16
2010	Connecticut	319	121	38	0.39
	US	32,885	10,228	31	0.34
	Best State*			19	0.14

\*State (or States) With Lowest Percents: Lowest Percents Could Be in Different States  
\*\*Based on the BAC of All Involved Drivers and Motorcycle Riders (Operators) Only

[Back To The Table of Contents](#)

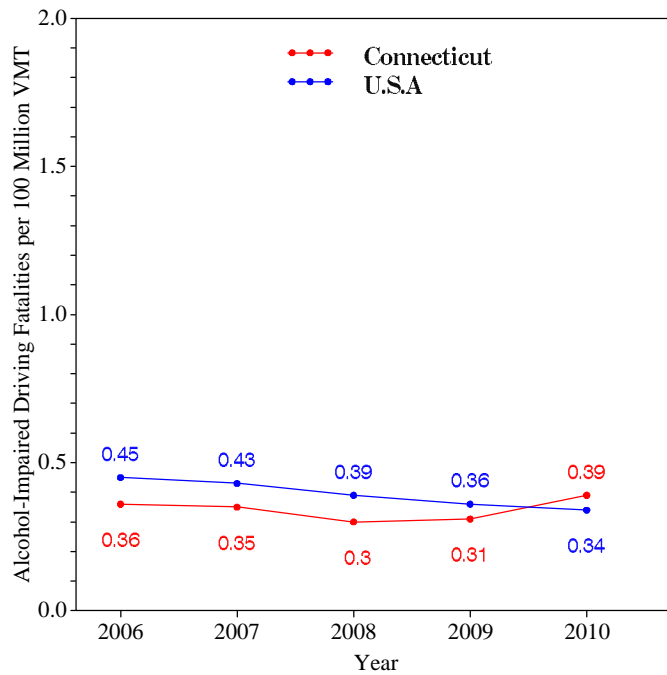


### Fatalities per 100 Million VMT



[Back To The Table of Contents](#)

### Alcohol-Impaired Driving Fatalities per 100 Million VMT



[Back To The Table of Contents](#)



**Blood Alcohol Concentration (BAC) Reporting Rates  
For Drivers/Motorcycle Riders (Operators)  
Involved in Fatal Crashes:  
Connecticut , U.S. and Best State**

Year		Surviving Drivers/Motorcycle Riders			Killed Drivers/Motorcycle Riders			Total Drivers/Motorcycle Riders		
		Total	With Blood Alcohol Concentration (BAC) Results Reported to FARS		Total	With Blood Alcohol Concentration (BAC) Results Reported to FARS		Total	With Blood Alcohol Concentration (BAC) Results Reported to FARS	
			Number	Percent		Number	Percent		Number	Percent
2006	Connecticut	232	62	27	220	190	86	452	252	56
	US	30,498	7,482	25	27,348	18,911	69	57,846	26,393	46
	Best State*			81			99			85
2007	Connecticut	210	68	32	193	171	89	403	239	59
	US	29,449	7,631	26	26,570	19,434	73	56,019	27,065	48
	Best State*			82			100			84
2008	Connecticut	207	75	36	197	170	86	404	245	61
	US	26,162	7,656	29	24,254	18,415	76	50,416	26,071	52
	Best State*			81			99			85
2009	Connecticut	145	39	27	157	125	80	302	164	54
	US	23,502	7,188	31	21,835	16,753	77	45,337	23,941	53
	Best State*			86			100			90
2010	Connecticut	215	61	28	206	153	74	421	214	51
	US	23,424	6,955	30	21,016	14,872	71	44,440	21,827	49
	Best State*			88			93			87

\*State (or States) With Highest Percents: Highest Percents Could Be in Different States

[Back To The Table of Contents](#)





Daytime Front Seat (Outboard Only) Passenger Vehicle Occupants, Aged 5 and Over, by Restraint Use: Fatalities and Observed Connecticut , U.S. and Best State

Table with 4 columns: Year, State, Fatalities - Restrained\*\*, Observed - Restrained\*\*\*. Rows include years 2006-2010 and states Connecticut, US, and Best State\*.

\*State With Highest Percent. Fatal Crash and Observed Percents Can Be Different States

\*\*Percent Based Only Where Restraint Use Was Known

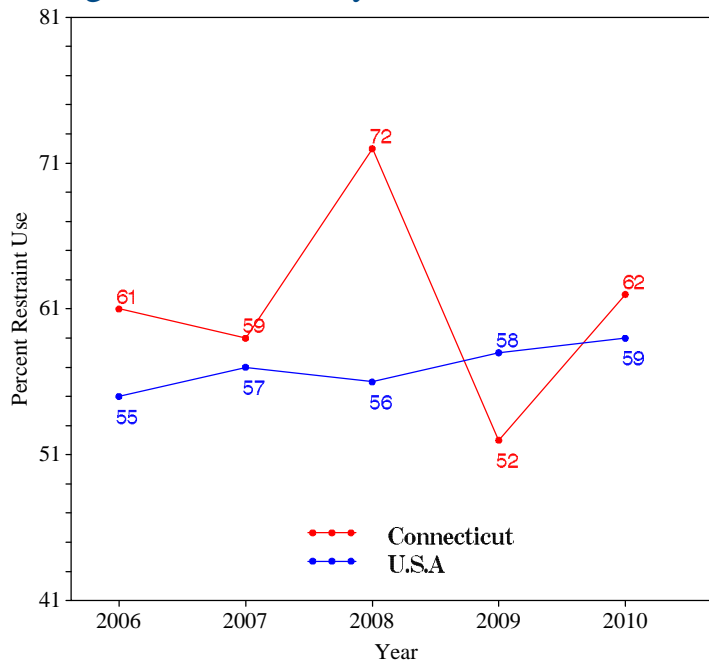
\*\*\*USA Data: National Occupant Protection Use Survey. Connecticut Data: State Survey

Note: The Purpose of this Table is to Compare (as closely as possible) the Use of Restraint Systems by Fatally Injured Occupants with Occupants in all Driving Situations

Back To The Table of Contents



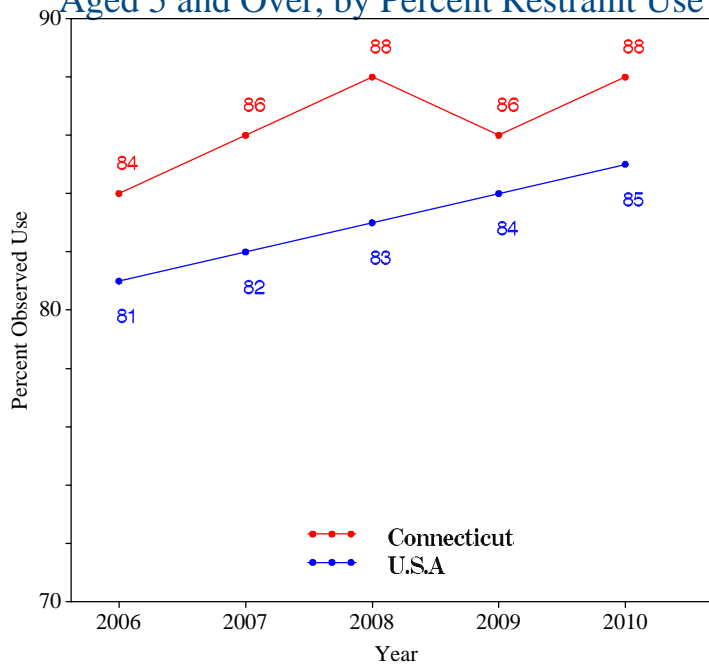
### Daytime Front Seat (Outboard Only) Passenger Vehicle Occupant Fatalities, Aged 5 and Over, by Percent Restraint Use\*



\*Percent Based Only Where Restraint Use Was Known

[Back To The Table of Contents](#)

### Daytime Front Seat (Outboard Only) Passenger Vehicle Occupants Observed, Aged 5 and Over, by Percent Restraint Use\*



\*USA Data: National Occupant Protection Use Survey. Connecticut Data: State Survey

[Back To The Table of Contents](#)



### Passenger Vehicle Occupant Fatalities Age 5 and Above by Restraint Use and Lives Saved Estimates

Year	Fatalities Age 5 and Above					Lives Saved Estimates**	
	Total	Restrained	Unrestrained	Unknown Restraint Use	Percent Known Restrained*	Lives Saved at Current Belt Use	Additional Lives Savable at 100% Belt Usage
2006	205	91	72	42	56	117	37
2007	206	97	83	26	54	101	31
2008	182	77	76	29	50	100	27
2009	148	58	67	23	46	77	24
2010	201	77	85	39	48	108	29

\*Percent Based Only Where Restraint Use Was Known

\*\*Lives Saved Estimates (Sum of columns may not equal other published numbers due to rounding)

[Back To The Table of Contents](#)

### Passenger Vehicle Occupant Fatalities Age 4 and Under by Restraint Use and Lives Saved Estimates

Year	Fatalities Age 4 and Under					Lives Saved Estimates**
	Total	Restrained	Unrestrained	Unknown Restraint Use	Percent Known Restrained*	Lives Saved at Current Seat Belt and Child Safety Seat Usage
2006	2	2	0	0	100	3
2007	1	0	1	0	0	0
2008	1	0	1	0	0	0
2009	1	0	1	0	0	0
2010	1	1	0	0	100	1

\*Percent Based Only Where Restraint Use Was Known

\*\*Lives Saved Estimates

[Back To The Table of Contents](#)



### Motorcyclist Fatalities by Helmet Use and Lives Saved Estimates

Year	Fatalities					Lives Saved Estimates**	
	Total	Helmeted	Unhelmeted	Unknown Helmet Use	Percent Known Helmeted*	Lives Saved at Current Helmet Use	Additional Lives Savable at 100% Helmet Usage
2006	57	20	36	1	36	11	13
2007	43	15	28	0	35	8	10
2008	63	20	42	1	32	12	16
2009	45	17	27	1	39	10	10
2010	52	16	36	0	31	10	13

\*Percent Based Only Where Helmet Use Was Known

\*\*Lives Saved Estimates (Sum of columns may not equal other published numbers due to rounding)

[Back To The Table of Contents](#)



## Fatalities by Person Type

Person Type		2006		2007		2008		2009		2010	
		#	%*	#	%*	#	%*	#	%*	#	%*
<b>Occupants</b>	<b>Passenger Car</b>	160	51	156	53	128	42	103	46	150	47
	<b>Light Truck - Pickup</b>	16	5	16	5	13	4	13	6	13	4
	<b>Light Truck - Utility</b>	20	6	30	10	29	10	26	12	33	10
	<b>Light Truck - Van</b>	11	4	6	2	13	4	8	4	6	2
	<b>Large Truck</b>	2	1	5	2	2	1	2	1	3	1
	<b>Bus</b>	0	0	0	0	0	0	0	0	2	1
	<b>Other/Unknown Occupants</b>	2	1	2	1	1	0	0	0	4	1
	<b><i>Total Occupants</i></b>	<b>211</b>	<b>68</b>	<b>215</b>	<b>73</b>	<b>186</b>	<b>62</b>	<b>152</b>	<b>68</b>	<b>211</b>	<b>66</b>
<b>Motorcyclists</b>	<b><i>Total Motorcyclists</i></b>	<b>57</b>	<b>18</b>	<b>43</b>	<b>15</b>	<b>63</b>	<b>21</b>	<b>45</b>	<b>20</b>	<b>52</b>	<b>16</b>
<b>Nonoccupants</b>	<b>Pedestrian</b>	38	12	32	11	47	16	26	12	46	14
	<b>Bicyclist and Other Cyclist</b>	5	2	5	2	6	2	1	0	7	2
	<b>Other/Unknown Nonoccupants</b>	0	0	1	0	0	0	0	0	3	1
	<b><i>Total Nonoccupants</i></b>	<b>43</b>	<b>14</b>	<b>38</b>	<b>13</b>	<b>53</b>	<b>18</b>	<b>27</b>	<b>12</b>	<b>56</b>	<b>18</b>
<b>Total</b>	<b><i>Total</i></b>	<b>311</b>	<b>100</b>	<b>296</b>	<b>100</b>	<b>302</b>	<b>100</b>	<b>224</b>	<b>100</b>	<b>319</b>	<b>100</b>

\*Sum of Percents May Not = 100 Due to Individual Cell Rounding

[Back To The Table of Contents](#)



### Fatalities by Crash Type

Crash Type	2006	2007	2008	2009	2010
<b>Total Fatalities (All Crashes)*</b>	311	296	302	224	319
<b>- (1) Single Vehicle</b>	176	165	192	143	211
<b>- (2) Involving a Large Truck</b>	29	28	24	13	23
<b>- (3) Involving Speeding</b>	95	99	99	103	124
<b>- (4) Involving a Rollover</b>	58	63	63	35	51
<b>- (5) Involving a Roadway Departure</b>	158	157	161	125	174
<b>- (6) Involving an Intersection (or Intersection Related)</b>	73	63	61	54	64

(1) Crash Involved Only One Coded Vehicle

(2) Crash Involved at Least One Large Truck

(3) Crash Involved at Least One Vehicle Speeding

(4) Crash Involved at Least One Vehicle That Rolled Over

(5) Crash Involved at Least One Vehicle That Departed the Roadway (FHWA Definition)

(6) Crash Occured Within an Intersection or Within the Approach to an Intersection

\*A Fatality Can Be in More Than One Category. Therefore Sum of the Individual Cells Will Not Equal the Total Due to Double Counting

[Back To The Table of Contents](#)



### Motorcyclist Fatalities by Age

Year	Age						Total
	<20	20-29	30-39	40-49	50-59	>59	
2006	3	23	9	11	8	3	57
2007	2	10	9	13	7	2	43
2008	3	20	13	14	11	2	63
2009	1	17	9	11	6	1	45
2010	1	16	13	13	9	0	52

[Back To The Table of Contents](#)

### Motorcyclist Fatalities Per 100,000 Registered Motorcycles

Year	Motorcyclist Fatalities	Total Motorcycle Registrations*	Motorcyclist Fatalities Per 100,000 Motorcycle Registrations
2006	57	64,959	87.75
2007	43	64,848	66.31
2008	63	65,845	95.68
2009	45	65,356	68.85
2010	52	65,567	79.31

\*Data Source: FHWA

[Back To The Table of Contents](#)



### Fatalities by Person Type and Race/Hispanic Origin

Person Type by Race/Hispanic Origin		2006	2007	2008	2009
<b>Occupants (All Vehicle Types)</b>	<b>Hispanic</b>	29	13	16	12
	<b>White Non-Hispanic</b>	204	204	181	147
	<b>Black, Non-Hispanic</b>	19	21	25	17
	<b>American Indian, Non-Hispanic/Unknown</b>	0	0	1	0
	<b>Asian, Non-Hispanic/Unknown</b>	2	2	3	1
	<b>All Other Non-Hispanic or Race</b>	2	2	0	0
	<b>Unknown Race and Unknown Hispanic</b>	12	16	23	20
	<b>Total</b>	268	258	249	197
<b>Non-Occupants (Pedestrians, Pedalcyclists and Other/Unknown NonOccupants)</b>					
	<b>Hispanic</b>	2	2	2	1
	<b>White Non-Hispanic</b>	31	20	38	19
	<b>Black, Non-Hispanic</b>	7	7	5	2
	<b>American Indian, Non-Hispanic/Unknown</b>	0	0	0	0
	<b>Asian, Non-Hispanic/Unknown</b>	1	1	1	1
	<b>All Other Non-Hispanic or Race</b>	0	0	0	0
	<b>Unknown Race and Unknown Hispanic</b>	2	8	7	4
<b>Total</b>	43	38	53	27	
<b>Total</b>	311	296	302	224	

2010 Race/Hispanic Origin Data is Not Yet Complete

[Back To The Table of Contents](#)





### 5 Year Trend For The Top 10 Counties of 2010 - Fatalities

Counties by 2010 Ranking		Fatalities					Percent of Total				
		2006	2007	2008	2009	2010	2006	2007	2008	2009	2010
1	<b>New Haven County</b>	65	75	94	58	77	21	25	31	26	24
2	<b>Hartford County</b>	83	66	69	46	68	27	22	23	21	21
3	<b>Fairfield County</b>	58	53	49	42	57	19	18	16	19	18
4	<b>New London County</b>	40	39	21	25	33	13	13	7	11	10
5	<b>Litchfield County</b>	17	19	16	7	25	5	6	5	3	8
6	<b>Tolland County</b>	8	16	15	7	21	3	5	5	3	7
7	<b>Middlesex County</b>	17	15	15	14	19	5	5	5	6	6
8	<b>Windham County</b>	23	13	23	25	19	7	4	8	11	6
<b>Sub Total 1.*</b>	<b>Top Ten Counties</b>	311	296	302	224	319	100	100	100	100	100
<b>Total</b>	<b>All Counties</b>	311	296	302	224	319	100	100	100	100	100

\*This Sub Total is the Total for the Top Ten Counties

\*\*This Sub Total is the Total for all Counties Outside the Top Ten

[Back To The Table of Contents](#)



## 5 Year Trend For The Top 10 Counties of 2010 - Fatalities Year to Year Percent Change

Counties by 2010 Ranking		Fatalities					Percent Change From Previous Year			
		2006	2007	2008	2009	2010	2007	2008	2009	2010
1	<b>New Haven County</b>	65	75	94	58	77	15	25	-38	33
2	<b>Hartford County</b>	83	66	69	46	68	-20	5	-33	48
3	<b>Fairfield County</b>	58	53	49	42	57	-9	-8	-14	36
4	<b>New London County</b>	40	39	21	25	33	-3	-46	19	32
5	<b>Litchfield County</b>	17	19	16	7	25	12	-16	-56	257
6	<b>Tolland County</b>	8	16	15	7	21	100	-6	-53	200
7	<b>Middlesex County</b>	17	15	15	14	19	-12	0	-7	36
8	<b>Windham County</b>	23	13	23	25	19	-43	77	9	-24
<b>Sub Total 1.*</b>	<b>Top Ten Counties</b>	311	296	302	224	319	-5	2	-26	42
<b>Total</b>	<b>All Counties</b>	311	296	302	224	319	-5	2	-26	42

\*This Sub Total is the Total for the Top Ten Counties

\*\*This Sub Total is the Total for all Counties Outside the Top Ten

[Back To The Table of Contents](#)



### 5 Year Trend For The Top 10 Counties of 2010 - Fatality Rates

Median Rate for all U.S. Counties: 17.1

Counties by 2010 Ranking		Fatalities Per 100,000 Population				
		2006	2007	2008	2009	2010
1	Windham County	19.70	11.09	19.51	21.17	16.03
2	Tolland County	5.37	10.69	9.90	4.60	13.75
3	Litchfield County	8.96	10.01	8.41	3.68	13.17
4	New London County	14.77	14.41	7.70	9.14	12.04
5	Middlesex County	10.40	9.14	9.09	8.45	11.47
6	New Haven County	7.65	8.79	10.97	6.74	8.92
7	Hartford County	9.42	7.46	7.77	5.16	7.60
8	Fairfield County	6.47	5.91	5.42	4.61	6.20
<i>Sub Rate 1.*</i>	<i>Top Ten Counties</i>	8.84	8.39	8.52	6.29	8.92
<i>Total Rate</i>	<i>All Counties</i>	8.84	8.39	8.52	6.29	8.92

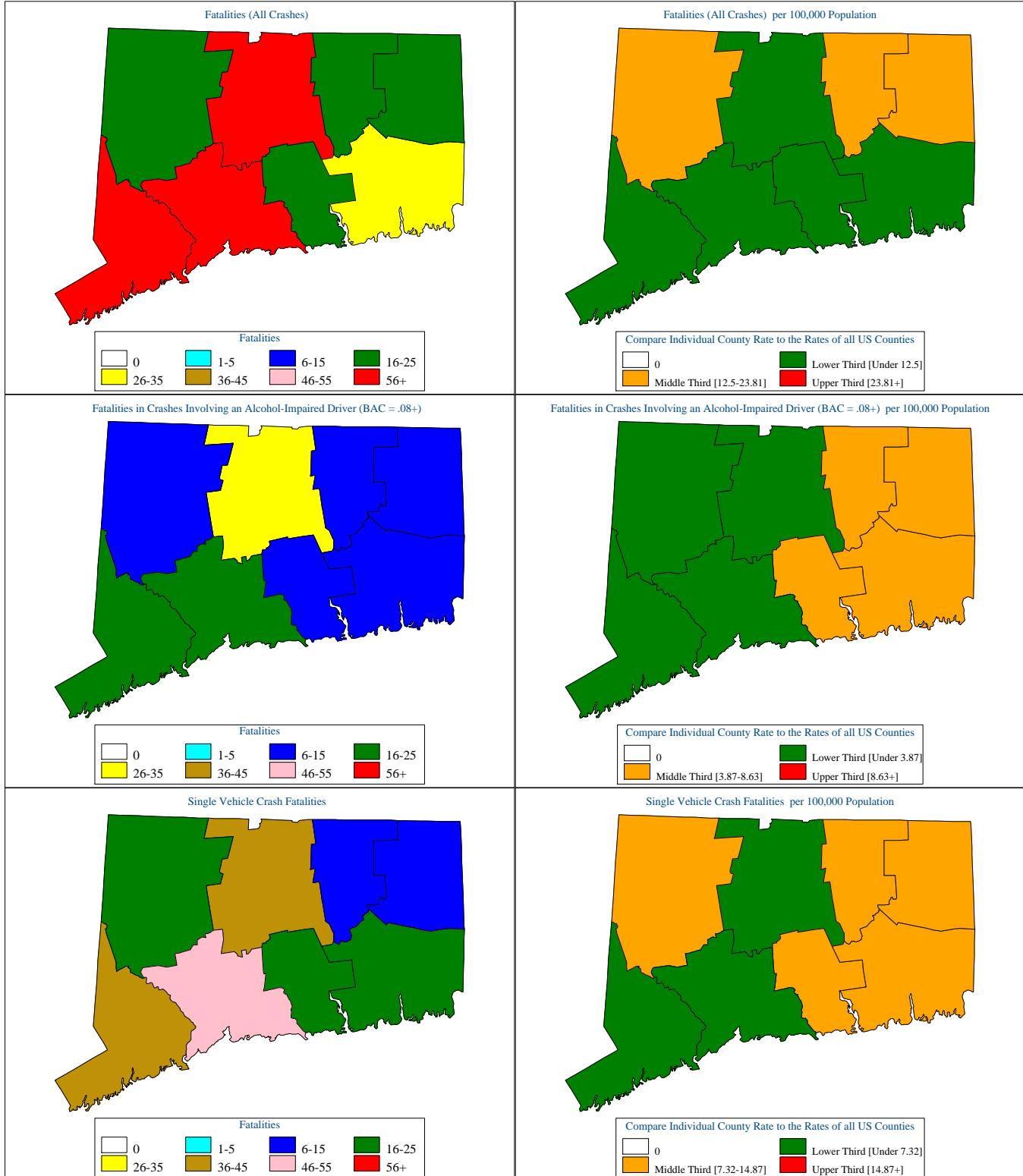
\*This Sub Rate is the Rate for the Top Ten Counties

\*\*This Sub Rate is the Rate for all Counties Outside the Top Ten

[Back To The Table of Contents](#)



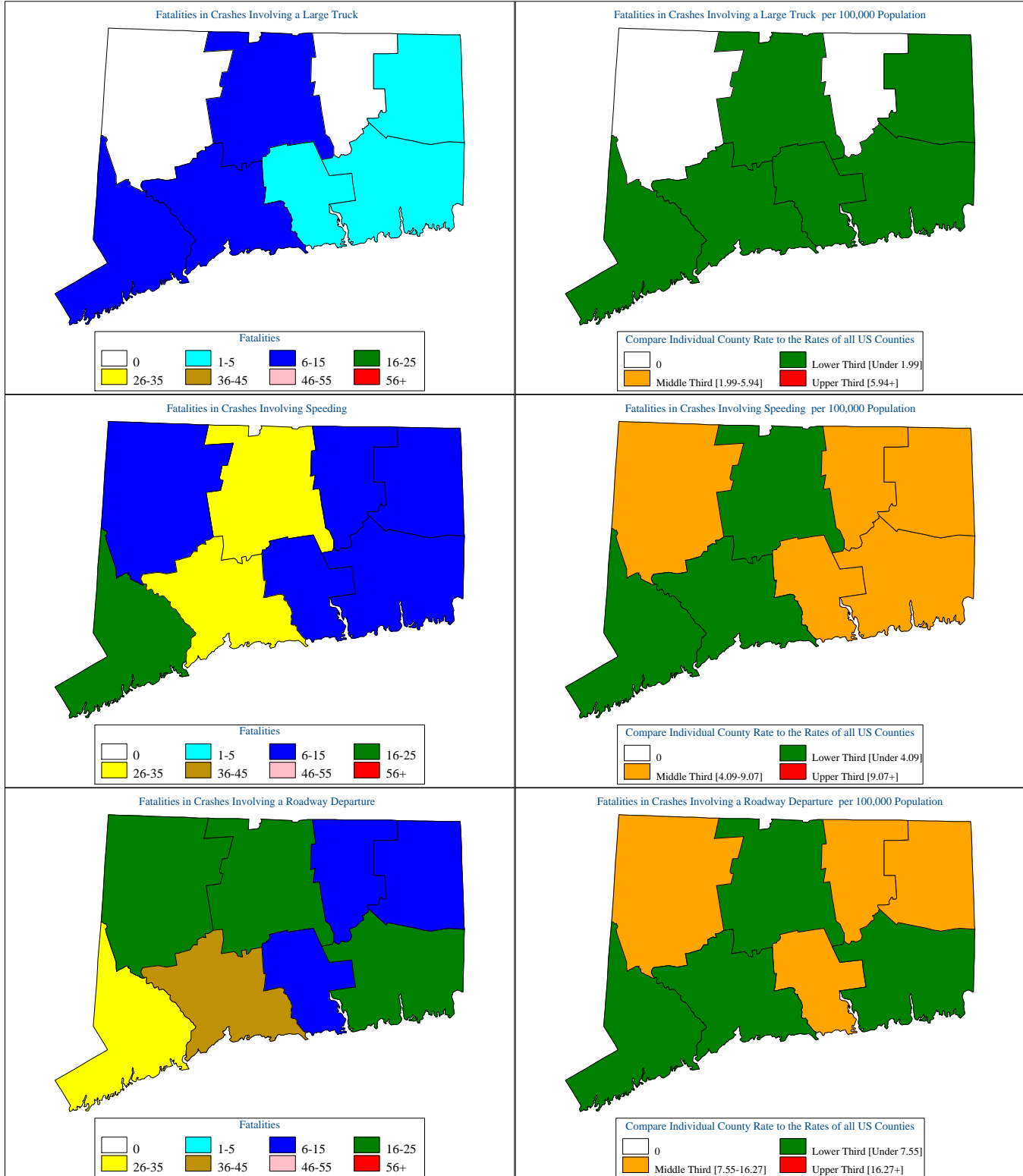
### Connecticut Motor Vehicle Crash Fatality Maps for 2010



[Back To The Table of Contents](#)



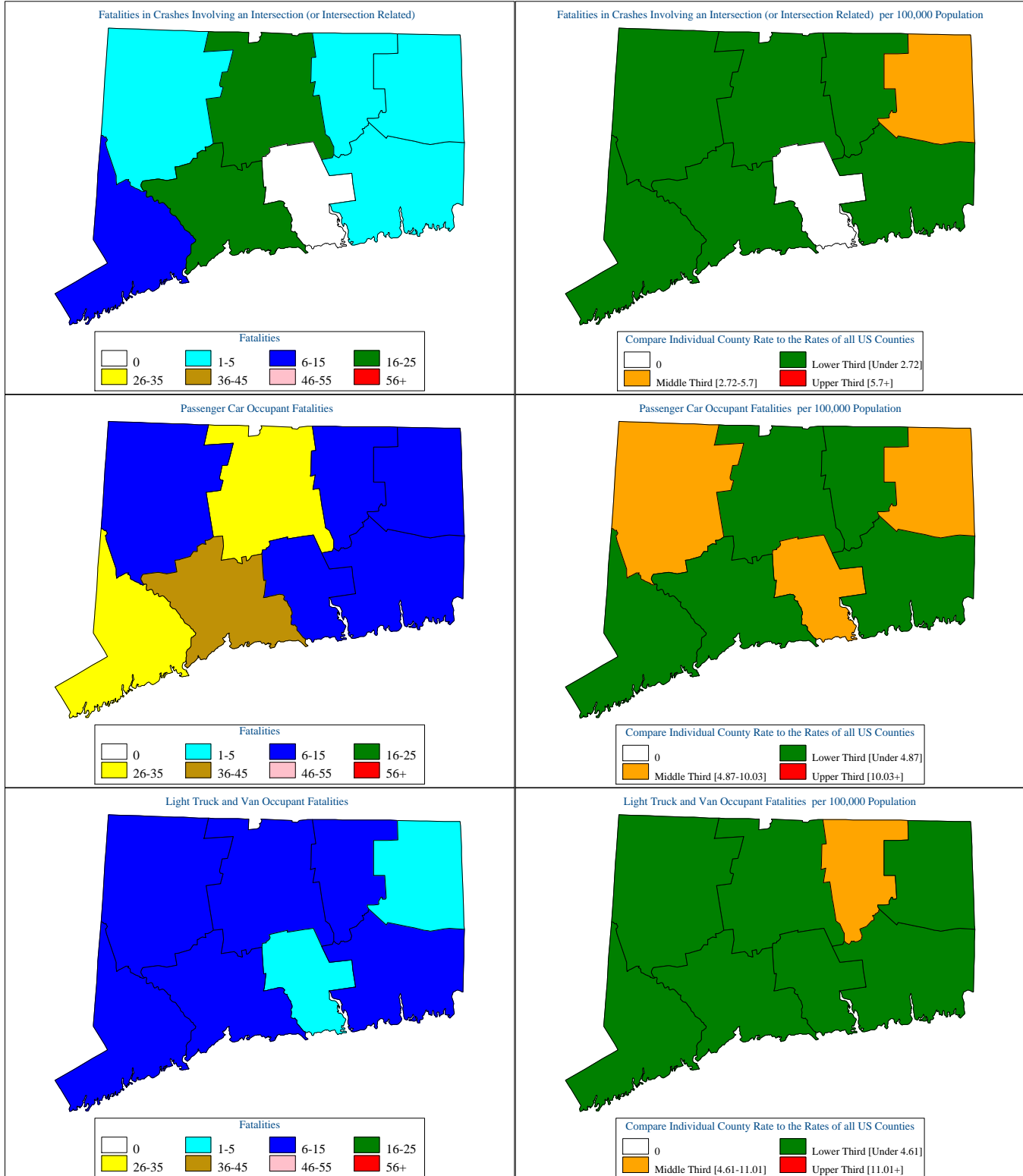
### Connecticut Motor Vehicle Crash Fatality Maps for 2010



[Back To The Table of Contents](#)



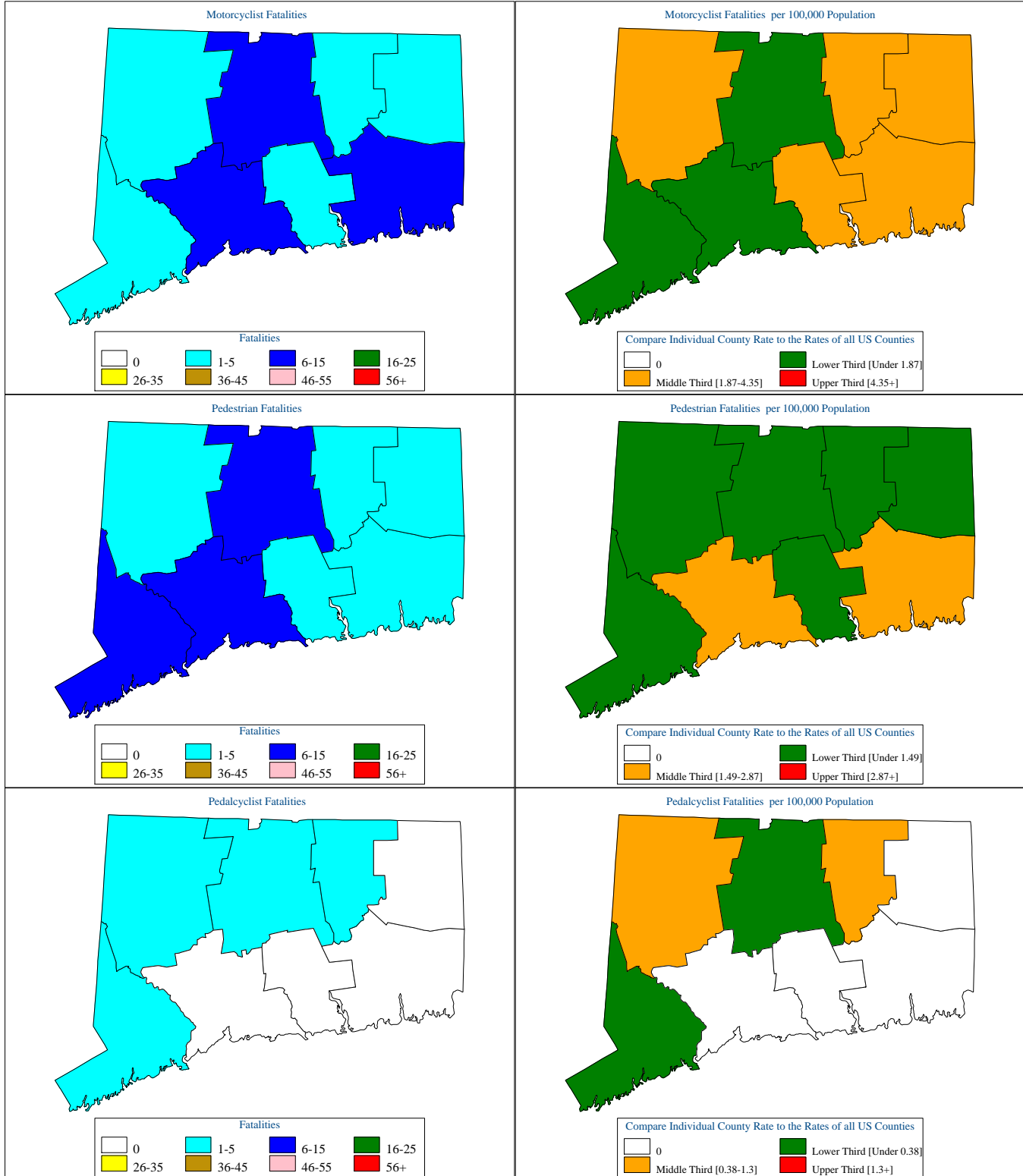
### Connecticut Motor Vehicle Crash Fatality Maps for 2010



[Back To The Table of Contents](#)



### Connecticut Motor Vehicle Crash Fatality Maps for 2010



[Back To The Table of Contents](#)