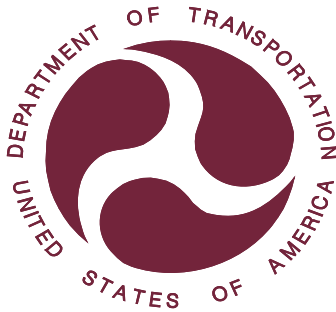


REPORT NUMBER 110-STF-11-007

SAFETY COMPLIANCE TESTING FOR FMVSS NO. 110 TIRE SELECTION AND RIMS

VOLKSWAGEN DE MEXICO S.A. DE CV
2011 VOLKSWAGEN JETTA
FOUR-DOOR PASSENGER CAR
NHTSA NO. CB5800

U.S. DOT SAN ANGELO TEST FACILITY
131 COMANCHE TRAIL, BUILDING 3527
GOODFELLOW AFB, TEXAS 76908



August 23, 2011

FINAL REPORT

PREPARED FOR

**U. S. DEPARTMENT OF TRANSPORTATION
NATIONAL HIGHWAY TRAFFIC SAFETY ADMINISTRATION
ENFORCEMENT
OFFICE OF VEHICLE SAFETY COMPLIANCE
1200 NEW JERSEY AVENUE, S.E.
WEST BUILDING, FOURTH FLOOR, NVS-220
WASHINGTON, D.C. 20590**

This publication is distributed by the National Highway Traffic Safety Administration in the interest of information exchange. Opinions, findings and conclusions expressed in this publication are those of the author(s) and not necessarily those of the Department of Transportation or the National Highway Traffic Safety Administration. The United States Government assumes no liability for its contents or use thereof.

If trade or manufacturers' names or products are mentioned, it is only because they are considered essential to the object of the publication and should not be construed as an endorsement.

Prepared By: Doris Beebe

Approved By: Thomas H. Jones

Accepted By: John J. ...

Acceptance Date: 8/23/11

1. Report No. 110-STF-11-007	2. Government Accession No.	3. Recipient's Catalog No.	
4. Title and Subtitle Final Report of FMVSS NO. 110 Compliance Testing of 2011 Volkswagen Jetta Four-Door Passenger Car, NHTSA No. CB5800		5. Report Date August 23, 2011	
		6. Performing Organization Code STF	
7. Author(s) Jack Stewart, Junior Systems Analyst Todd P. Groghan, Safety Compliance Engineer Kenneth H. Yates, Safety Compliance Engineer		8. Performing Organization Report No. STF-DOT-11-110-007	
9. Performing Organization Name and Address U.S. DOT San Angelo Test Facility 131 Comanche Trail, Building 3527 Goodfellow AFB, Texas 76908		10. Work Unit No. (TRAIS)	
		11. Contract or Grant No.	
12. Sponsoring Agency Name and Address United States Department of Transportation National Highway Traffic Safety Administration Office of Vehicle Safety Compliance, NVS 220 1200 New Jersey Avenue, SE Washington, DC 20590		13. Type of Report and Period Covered Final Test Report April 7, 2011	
		14. Sponsoring Agency Code NVS-220	
15. Supplementary Notes			
16. Abstract Compliance tests were conducted on the subject 2011 Volkswagen Jetta four-door passenger car in accordance with the specifications of the Office of Vehicle Safety Compliance Test Procedure No. TP-110P-03 for the determination of FMVSS NO. 110 compliance. Test failures identified were as follows: NONE.			
17. Key Words Compliance Testing Safety Engineering FMVSS NO. 110		18. Distribution Statement Copies of this report are available from: NHTSA Technical Information Services NPO-411 1200 New Jersey Avenue, S.E. Washington, DC 20590 Email: tis@dot.gov FAX: 202-493-2833	
19. Security Classification (of this report) UNCLASSIFIED	21. Number of Pages 37	22. Price	
20. Security Classification (of this page) UNCLASSIFIED			

TABLE OF CONTENTS

SECTION	PAGE
1 Introduction	1
2 Test Procedure and Summary of Results	2
3 Test Data	3
4 Test Equipment List and Calibration Information	16
5 Photographs	17

Figure

- 5.1 ¾ Front View from Left Side of Vehicle
- 5.2 ¾ Rear View from Right Side of Vehicle
- 5.3 Vehicle Certification Label
- 5.4 Vehicle Placard
- 5.5 Tire Showing Brand
- 5.6 Tire Showing Model
- 5.7 Tire Showing Size, Load Index, and Speed Symbol
- 5.8 Tire Showing Max Load Rating and Max Inflation Pressure
- 5.9 Tire Showing Serial Number
- 5.10 Rim Contour for Full Width of Cross Section
- 5.11 Right Front Rim Showing Date of Manufacture, Manufacturer, Size, and Other Rim Markings
- 5.12 Vehicle Front Seats Ballasted for Normal, Full, and Maximum Loads
- 5.13 Vehicle Rear Seat Ballasted for Normal Load
- 5.14 Vehicle Rear Seat Ballasted for Full and Maximum Loads
- 5.15 Vehicle Trunk Ballasted for Maximum Load
- 5.16 Vehicle on Weight Scales

SECTION 1

INTRODUCTION

1.1 PURPOSE OF COMPLIANCE TEST

A 2011 Volkswagen Jetta passenger car was tested to determine if the vehicle was in compliance with the requirements of FMVSS No. 110. All tests were conducted in accordance with NHTSA, Office of Vehicle Safety Compliance (OVSC) Laboratory Test Procedure TP-110P-03, dated August 31, 2007.

1.2 TEST VEHICLE

The test vehicle was a 2011 Volkswagen Jetta four-door passenger car. Nomenclatures applicable to the test vehicle are:

A. Vehicle Identification Number: 3VW1K7AJ7BM049577

B. NHTSA Number: CB5800

C. Manufacturer: Volkswagen de Mexico S.A. de C.V.

D. Manufacture Date: 12/2010

1.3 TEST DATE

The test vehicle was tested April 7, 2011.

SECTION 2

TEST PROCEDURE AND SUMMARY OF RESULTS

2.1 TEST PROCEDURE

Prior to test, the test vehicle was inspected for completeness, systems operability and appropriate fuel and liquid levels, i.e. oil and coolant. The vehicle was then photographically documented. The right front and left rear wheels were removed from the vehicle. Pertinent information on the tires and rims furnished with the vehicle was recorded and tires and rims were photographed.

The vehicle tire placard was photographed and checked for compliance to location, format, and information requirements. Subsequent events included weighing the vehicle to establish delivered curb weight and the distribution of weight on the front and rear axles and each wheel position. Vehicle was ballasted to Normal Load weight, Full Occupant Load weight, and Maximum Vehicle Load weight. At each step of the ballasting procedure, data was recorded. Ballast was photographically documented for the Normal, Full, and Maximum Vehicle Load weights. The tires and rims labeled and installed on the vehicle were verified to be appropriate for the loading and load ratings of the vehicle. The owner's manual was checked for all required information on placard, tire loading, and general tire and loading parameters.

2.2 SUMMARY OF RESULTS

The data indicate compliance of the Volkswagen Jetta with all requirements tested.

SECTION 3
TEST DATA

DATA SUMMARY SHEET

VEHICLE MAKE/MODEL/BODY STYLE: 2011 Volkswagen Jetta four-door passenger car
VEHICLE NHTSA NUMBER: CB5800 VIN: 3VW1K7AJ7BM049577
VEHICLE TYPE: passenger car DATE OF MANUFACTURE: 12/2010
LABORATORY: U.S. DOT San Angelo Test Facility

PASSENGER CAR REQUIREMENTS

PASS/FAIL

General (Data Sheet 2)

The vehicle is equipped with tires that meet the requirements of S139. (S110, S4.1)

PASS

Tire Load Limits (Data Sheet 5)

The vehicle maximum load on the tire shall not be greater than the maximum load rating as marked on the sidewall of the tire. (S110, S4.2.1.1)

PASS

The vehicle normal load on the tire is not greater than the value of 94 percent of the load rating at the vehicle manufacturer's recommended cold inflation pressure for that tire. (S110, S4.2.1.2)

PASS

Placard and Tire Inflation Pressure Label (Data Sheets 4 and 5)

The placard and tire inflation pressure label (if provided) are affixed and located correctly, and display the information and format required. (S110, S4.3)

PASS

No inflation pressure other than the maximum permissible inflation pressure may be shown on the placard and, if any, tire inflation pressure label unless as required. (S110, S4.3.4)

PASS

Rim (Data Sheet 3)

Each rim is constructed to the dimensions of a rim specified for the application. (S110, S4.4.1(a))

PASS

Vehicle rims retain deflated tires during a controlled brake application. (S110, S4.4.1(b))

See
Remarks

Owner's Manual (Data Sheet 6)

Owner's manual or other document has discussion of Vehicle Placard Loading and Tires. (575.6 (a)(4))

PASS

Owner's manual includes exact statement relating to "Steps for Determining Correct Load Limits." (575.6(a)(5))

PASS

REMARKS: The rim retention test required by FMVSS No.110, paragraph S4.4.1(b) was not executed on the subject Volkswagen Jetta.

DATA SHEET 1
TEST VEHICLE INFORMATION/RECEIVING INSPECTION

VEHICLE MAKE/MODEL/BODY STYLE: 2011 Volkswagen Jetta four-door passenger car

VEHICLE NHTSA NUMBER: CB5800

TEST DATE: April 7, 2011

VIN: 3VW1K7AJ7BM049577

MANUFACTURE DATE: 12/2010

GVWR: 1,820 kg (4,012 lb)

GAWR(front): 910 kg (2,006 lb)

GAWR(rear): 960 kg (2,116 lb)

SEATING POSITIONS: FRONT 2 MID N/A REAR 3

ODOMETER READING AT START OF TEST: 103 km (64 mi)

ENGINE DATA: 4 Cylinders 2.0 Liters Cubic Inches

TRANSMISSION DATA: Automatic X Manual 5 No. of Speeds

FINAL DRIVE DATA: Rear Drive X Front Drive 4 Wheel Drive

INSTALLED VEHICLE EQUIPMENT:

X	Air Conditioning	X	Traction Control	X	Clock
	Tinted Glass	X	Tachometer		Roof Rack
X	Power Steering		Cruise Control		Console
X	Power Windows	X	Rear Window Defroster	X	Driver Air Bag
X	Power Door Locks		Sun Roof or T-Top	X	Passenger Air Bag
	Power Seat(s)	X	Tilt Steering Wheel	X	Side Air Bag(s)
X	Power Brakes	X	Stereo	X	Front Disc Brakes
X	Antilock Brake System		Telephone		Rear Disc Brakes
	Navigation System		Trailer Hitch		Other -

REMARKS: None

RECORDED BY: Todd P. Groghan

DATE: April 7, 2011

APPROVED BY: Kenneth H. Yates

**DATA SHEET 3
VEHICLE RIM IDENTIFICATION**

VEHICLE MAKE/MODEL/BODY STYLE: 2011 Volkswagen Jetta four-door passenger car

VEHICLE NHTSA NUMBER: CB5800 VIN: 3VW1K7AJ7BM049577

LABORATORY: U.S. DOT San Angelo Test Facility TEST DATE: April 7, 2011

Rim Markings (if available):

Right Front

Left Rear

Manufacturer's Name, Symbol or Trademark Fumagalli Fumagalli

Rim Size 6Jx15H2 6Jx15H2

Date of Manufacture 02 12 10 02 12 10

Does Rim contain 'DOT' symbol? (YES/NO) No No

Other Rim Markings See Figure 5.11 Same as right front

Rim Inspection Comments: There are no 'DOT' markings on either rim.

Rim Size:

	Tire Size	Measured Rim Width	Measured Rim Diameter
Right Front Wheel	<u>195/65R15</u>	<u>15.2 cm (6 in)</u>	<u>38.1 cm (15 in)</u>
Left Rear Wheel	<u>195/65R15</u>	<u>15.2 cm (6 in)</u>	<u>38.1 cm (15 in)</u>

Does stamped rim size (if available) agree with the measured rim size?

Right front rim: (X) YES () NO Left rear rim: (X) YES () NO

Installed rims are suitable for installed tires? (X) YES () NO

Reference document: 2008 European Tyre & Rim Technical
Organization Yearbook

DATA INDICATES COMPLIANCE: PASS/FAIL: PASS

REMARKS: None

RECORDED BY: Todd P. Groghan DATE: April 7, 2011

APPROVED BY: Kenneth H. Yates

DATA SHEET 4 (1 of 2)
VEHICLE PLACARD, AND TIRE INFLATION PRESSURE LABEL

VEHICLE MAKE/MODEL/BODY STYLE: 2011 Volkswagen Jetta four-door passenger car
 VEHICLE NHTSA NUMBER: CB5800 VIN: 3VW1K7AJ7BM049577
 LABORATORY: U.S. DOT San Angelo Test Facility TEST DATE: April 7, 2011

Identification of Vehicle Labeling

	Yes/No	Location	PASS/FAIL
1. Certification Label	<u>Yes</u>	<u>Driver's door B-pillar</u>	<u>PASS</u>
2. Vehicle Placard	<u>Yes</u>	<u>Driver's door B-pillar</u>	<u>PASS</u>
3. Tire Inflation Pressure Label	<u>No</u>	<u></u>	<u></u>

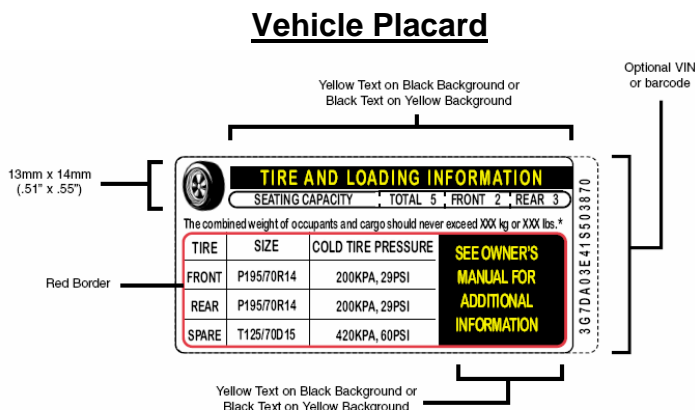


FIGURE 1
(70 FR 14425)

Vehicle Placard has the exact color and format as specified in Figure 1 and text is in English language. (X)YES ()NO

Vehicle Placard is permanently affixed. (X)YES ()NO

Vehicle Placard Information:

Combined weight of occupants and cargo 495 kg (1,091 lb)

Seating Capacity: Total 5 Front 2 Rear 3

Is the number of belted seating positions the same as the labeled seating capacity? (X)YES ()NO

Is the tire size and pressure provided? (X)YES ()NO

DATA SHEET 4 (2 of 2)
VEHICLE PLACARD, AND TIRE INFLATION PRESSURE LABEL

Vehicle Placard Tire Information:

Tire size: Front 195/65R15 Rear 195/65R15

Tire Inflation Pressure: Front 220 kPa (32 psi) Rear 220 kPa (32 psi)

Are the sizes of the installed tires the same as the sizes of the labeled tires?
(X)YES ()NO

Is the labeled cold tire inflation pressure equal to or less than the sidewall labeled maximum cold tire inflation pressure?

Front axle: (X)YES ()NO Rear axle: (X)YES ()NO

DATA INDICATES COMPLIANCE:

PASS/FAIL: PASS

REMARKS: None

RECORDED BY: Todd P. Groghan

DATE: April 7, 2011

APPROVED BY: Kenneth H. Yates

DATA SHEET 5 (1 of 4)
CURB WEIGHT, NORMAL LOAD WEIGHT & MAXIMUM VEHICLE WEIGHT

VEHICLE MAKE/MODEL/BODY STYLE: 2011 Volkswagen Jetta four-door passenger car

VEHICLE NHTSA NUMBER: CB5800 VIN: 3VW1K7AJ7BM049577

LABORATORY: U.S. DOT San Angelo Test Facility TEST DATE: April 7, 2011

Full Fluid Levels: Fuel Full Coolant Full Other Fluids* Full

* Transmission, windshield washer, brake, clutch, and engine oil.

Tire Pressures: LF 220 kPa (32 psi) LR 220 kPa (32 psi)
RF 220 kPa (32 psi) RR 220 kPa (32 psi)

A. MEASURED CURB WEIGHT WITH INSTALLED OPTIONS AND ACCESSORIES

LF 367 kg (808 lb) LR 283 kg (624 lb)
RF 381 kg (839 lb) RR 279 kg (616 lb)
Front Axle 748 kg (1,647 lb) Rear Axle 562 kg (1,240 lb)
Total Vehicle 1,310 kg (2,887 lb)

B. MEASURED VEHICLE NORMAL LOAD WEIGHT

- (1) Seating Capacity from Vehicle Placard = Total 5 Front 2 Rear 3
- (2) Normal Load Number of Occupants (Table in Section 10) = 3
Occupant Distribution: Front Seat 2 Second Seat 1
- (3) Total Normal Occupant Load: 204 kg (450 lb)
[# of occupants x 68 KG per occupant]
- (4) Measured Normal Load on Axles:
- LF 406 kg (895 lb) LR 345 kg (761 lb)
RF 420 kg (926 lb) RR 342 kg (755 lb)
Front Axle 826 kg (1,821 lb) Rear Axle 687 kg (1,516 lb)
Total Vehicle 1,513 kg (3,337 lb)

DATA SHEET 5 (2 of 4)
CURB WEIGHT, NORMAL LOAD WEIGHT & MAXIMUM VEHICLE WEIGHT

(5) Calculated Vehicle Normal Load on the Tire:

Front Tires [measured front axle normal load/2] = 413 kg (911 lb)

Rear Tires [measured rear axle normal load/2] = 344 kg (758 lb)

(6) Calculated 94% of tire load rating at recommended cold inflation pressure:

Load rating at recommend cold inflation pressure= 555 kg (1,224 lb)

94% of load rating = 522 kg (1,151 lb)

Vehicle Normal Load on the Tire must not be greater than 94% of Load Rating Value.

		PASS/FAIL
[B.(5)<B.(6)]	Front Tires	<u>PASS</u>
	Rear Tires	<u>PASS</u>

C. MEASURED VEHICLE WEIGHT WITH FULL OCCUPANT LOAD

(1) Seating Capacity from Placard:

Total 5 Front 2 Rear 3

(2) Full Occupant Load: 340 kg (750 lb)
 [# of total occupants from C.(1) x 68 KG per occupant]

(3) Measured Vehicle Weight with Full Occupant Load:

LF 416 kg (918 lb) LR 402 kg (887 lb)

RF 430 kg (948 lb) RR 401 kg (884 lb)

Front Axle 846 kg (1,866 lb) Rear Axle 803 kg (1,771 lb)

Total Vehicle 1,649 kg (3,637 lb)

DATA SHEET 5 (3 of 4)
CURB WEIGHT, NORMAL LOAD WEIGHT & MAXIMUM VEHICLE WEIGHT

D. MEASURED MAXIMUM VEHICLE LOAD WEIGHT

(1) Vehicle Capacity Weight (from placard): 495 kg (1,091 lb)

(2) Full Occupant Load (from C.(2)): 340 kg (750 lb)

(3) Luggage/Cargo Load (subtract (2) from (1)): 155 kg (341 lb)

(4) Measured Vehicle Maximum Load on Axles:

LF <u>407 kg (897 lb)</u>	LR <u>491 kg (1,083 lb)</u>
RF <u>418 kg (922 lb)</u>	RR <u>488 kg (1,076 lb)</u>
Front Axle <u>825 kg (1,819 lb)</u>	Rear Axle <u>979 kg (2,159 lb)</u>
Total Vehicle <u>1,804 kg (3,978 lb)</u>	

(5) Calculated Vehicle Maximum Load on the Tire:

Front Tires [measured front axle maximum load/2]= 413 kg (910 lb)

Rear Tires [measured rear axle maximum load/2] = 490 kg (1,080 lb)

(6) Tire Sidewall Maximum Load Ratings:

	Front	Rear
Installed Tire Size	<u>195/65R15</u>	<u>195/65R15</u>
Max. Load Rating on Sidewall	<u>615 kg (1,356 lb)</u>	<u>615 kg (1,356 lb)</u>

Vehicle Maximum Load on the tire must not be greater than the Maximum Load Rating Marked on the Tire Sidewall.

	PASS/FAIL
[D.(5)<D.(6)] Front Tires	<u>PASS</u>
Rear Tires	<u>PASS</u>

DATA SHEET 5 (4 of 4)
CURB WEIGHT, NORMAL LOAD WEIGHT & MAXIMUM VEHICLE WEIGHT

- (7) Tire Load Ratings at Vehicle Placard or Tire Inflation Pressure Label
 Recommended Cold Tire Inflation Pressure.

	Front Axle	Rear Axle
Labeled Tire Size	<u>195/65R15</u>	<u>195/65R15</u>
Labeled Cold Inflation Pressure	<u>220 kPa (32 psi)</u>	<u>220 kPa (32 psi)</u>
Load Rating at This Pressure	<u>555 kg (1,224 lb)</u>	<u>555 kg (1,224 lb)</u>
Reference used to obtain Load Rating: <u>2008 European Tyre & Rim Technical</u> <u>Organization Yearbook</u>		

Vehicle Normal Load on the Tire must not be greater than the Tire Load Rating at the Labeled Cold Tire Inflation Pressure.

		PASS/FAIL
[B.(5)<D.(7)]	Front Tires	<u>PASS</u>
	Rear Tires	<u>PASS</u>

Vehicle Maximum Load on the tire must not be greater than the Tire Load Rating at the Labeled Cold Tire Inflation Pressure.

		PASS/FAIL
[D.(5)<D.(7)]	Front Tires	<u>PASS</u>
	Rear Tires	<u>PASS</u>

DATA INDICATES COMPLIANCE: PASS/FAIL: PASS

REMARKS: None

RECORDED BY: Todd P. Groghan

DATE: April 7, 2011

APPROVED BY: Kenneth H. Yates

DATA SHEET 6 (1 of 2)
OWNER'S MANUAL REQUIREMENTS

VEHICLE MAKE/MODEL/BODY STYLE: 2011 Volkswagen Jetta 4-door passenger car

VEHICLE NHTSA NUMBER: CB5800 VIN: 3VW1K7AJ7BM049577

LABORATORY: U.S. DOT San Angelo Test Facility TEST DATE: April 7, 2011

Owner's Manual Discusses:

Part 575.6(a) Paragraph	Required Discussion Topic	Discussed in Manual? (YES/NO)	Page Numbers
(4)(i)	Tire labeling, including a description and explanation of each marking on the tires provided with the vehicle, and information about the location of the Tire Identification Number (TIN).	Yes	277 - 280
(4)(ii)	(A) Description and explanation of recommended cold tire inflation pressure.	Yes	283
	(B) Description and explanation of FMVSS NO. 110 Vehicle Placard and Tire Inflation Pressure Label and their location(s).	Yes	269
	(C) Description and explanation of adverse safety consequences of under-inflation including tire failure.	Yes	264, 270, 271
	(D) Description and explanation for measuring and adjusting air pressure to achieve proper inflation.	Yes	270
(4)(iii)	Glossary of tire terminology, including "cold tire pressure," maximum inflation pressure," and "recommended inflation pressure," and all non-technical terms defined in S3 of FMVSS NO. 110 & 139.	Yes	283 - 286
(4)(iv)	Tire care, including maintenance and safety practices.	Yes	265 - 267
(4)(v)	(A) Description and explanation of locating and understanding load limit information, total load capacity, seating capacity, towing capacity, and cargo capacity.	Yes	287 - 289
	(B) Description and explanation for calculating total and cargo load capacities with varying seating configurations including quantitative examples showing/illustrating how the vehicle's cargo and luggage capacity decreases as the combined number and size of occupants increases.	Yes	289
	(C) Description and explanation for determining compatibility of tire and vehicle load capabilities.	Yes	268
	(D) Description and explanation of adverse safety consequences of overloading on handling and stopping and on tires.	Yes	281, 287, 288

DATA SHEET 6 (2 of 2)
OWNER'S MANUAL REQUIREMENTS

The following statement, in the English language, is provided verbatim in the Owner's Manual. Reference Part 575.6(a)(5) YES (X) NO ()

Steps for Determining Correct Load Limit --

- (1) Locate the statement "The combined weight of occupants and cargo should never exceed XXX kg or XXX lbs." on your vehicle's placard.
- (2) Determine the combined weight of the driver and passengers that will be riding in your vehicle.
- (3) Subtract the combined weight of the driver and passengers from XXX kg or XXX lbs.
- (4) The resulting figure equals the available amount of cargo and luggage load capacity. For example, if the "XXX" amount equals 1400 lbs. and there will be five 150 lb passengers in your vehicle, the amount of available cargo and luggage load capacity is 650 lbs. (1400-750 (5x150) = 650 lbs.)
- (5) Determine the combined weight of the luggage and cargo being loaded on the vehicle. That weight may not safely exceed the available cargo and luggage load capacity calculated in Step 4.
- (6) If your vehicle will be towing a trailer, load from your trailer will be transferred to your vehicle. Consult this manual to determine how this reduces the available cargo and luggage load capacity of your vehicle.

DATA INDICATES COMPLIANCE:

PASS/FAIL: PASS

REMARKS: None

RECORDED BY: Todd P. Groghan

DATE: April 7, 2011

APPROVED BY: Kenneth H. Yates

SECTION 4

TEST EQUIPMENT LIST AND CALIBRATION INFORMATION

EQUIPMENT	DESCRIPTION	MODEL/ SERIAL NO	CAL. DATE	NEXT CAL. DATE
FLOOR SCALES (VEHICLE & BALLAST)	INTERCOMP SW DELUXE SCALES	PART #100156 SERIAL #27032382	7/21/2010	7/21/2011
AIR PRESSURE GAUGE	ASHCROFT GENERAL PURPOSE DIGITAL GAUGE	MODEL #D1005PS 02L 100 PSI SERIAL #20017398- 01	12/17/2010	12/17/2011

SECTION 5
PHOTOGRAPHS



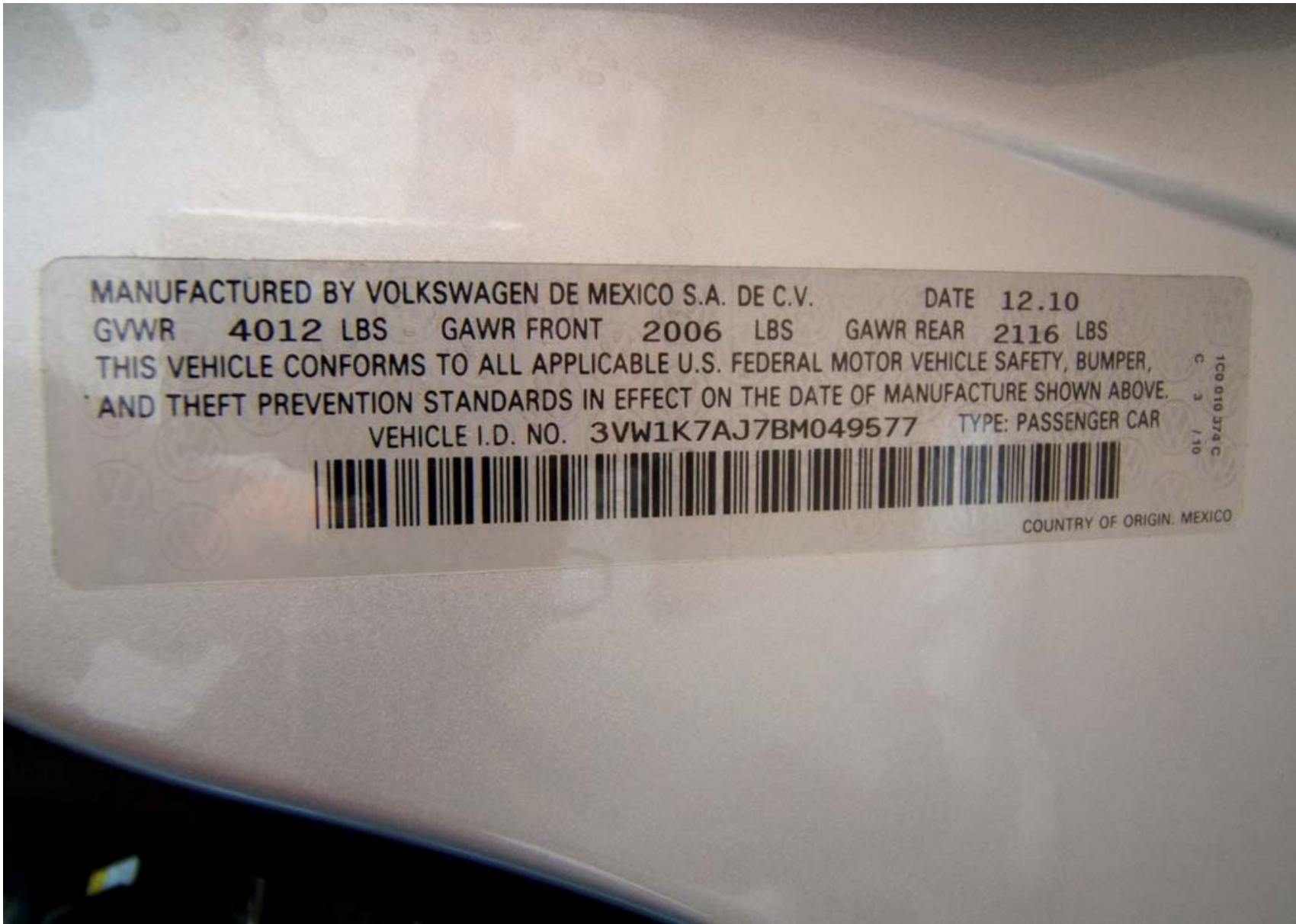
2011 VOLKSWAGEN JETTA
NHTSA NO. CB5800
FMVSS NO. 110

FIGURE 5.1
¾ FRONT VIEW FROM LEFT SIDE OF VEHICLE



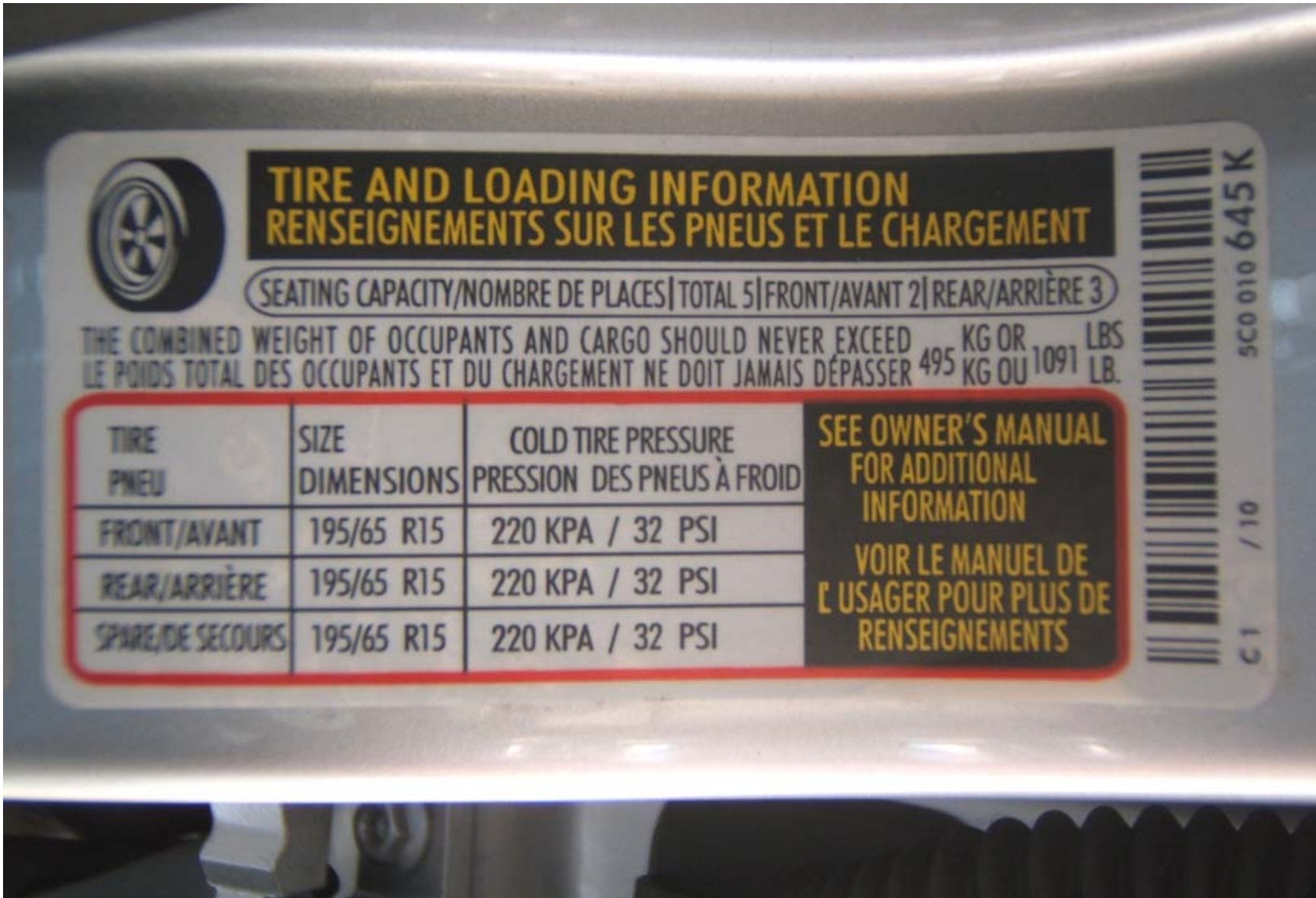
2011 VOLKSWAGEN JETTA
NHTSA NO. CB5800
FMVSS NO. 110

FIGURE 5.2
¾ REAR VIEW FROM RIGHT SIDE OF VEHICLE



2011 VOLKSWAGEN JETTA
NHTSA NO. CB5800
FMVSS NO. 110

FIGURE 5.3
VEHICLE CERTIFICATION LABEL



2011 VOLKSWAGEN JETTA
 NHTSA NO. CB5800
 FMVSS NO. 110

FIGURE 5.4
 VEHICLE PLACARD



2011 VOLKSWAGEN JETTA
NHTSA NO. CB5800
FMVSS NO. 110

FIGURE 5.5
TIRE SHOWING BRAND



2011 VOLKSWAGEN JETTA
NHTSA NO. CB5800
FMVSS NO. 110

FIGURE 5.6
TIRE SHOWING MODEL



2011 VOLKSWAGEN JETTA
NHTSA NO. CB5800
FMVSS NO. 110

FIGURE 5.7
TIRE SHOWING SIZE, LOAD INDEX, AND SPEED SYMBOL



2011 VOLKSWAGEN JETTA
NHTSA NO. CB5800
FMVSS NO. 110

FIGURE 5.8
TIRE SHOWING MAX LOAD RATING AND MAX INFLATION PRESSURE



2011 VOLKSWAGEN JETTA
NHTSA NO. CB5800
FMVSS NO. 110

FIGURE 5.9
TIRE SHOWING SERIAL NUMBER



2011 VOLKSWAGEN JETTA
NHTSA NO. CB5800
FMVSS NO. 110

FIGURE 5.10
RIM SHOWING RIM CONTOUR FOR
FULL WIDTH OF CROSS SECTION



2011 VOLKSWAGEN JETTA
 NHTSA NO. CB5800
 FMVSS NO. 110

FIGURE 5.11
 RIGHT FRONT RIM SHOWING DATE OF MANUFACTURE,
 MANUFACTURER, SIZE, AND OTHER RIM MARKINGS



2011 VOLKSWAGEN JETTA
NHTSA NO. CB5800
FMVSS NO. 110

FIGURE 5.12
VEHICLE FRONT SEATS BALLASTED FOR
NORMAL, FULL, AND MAXIMUM LOADS



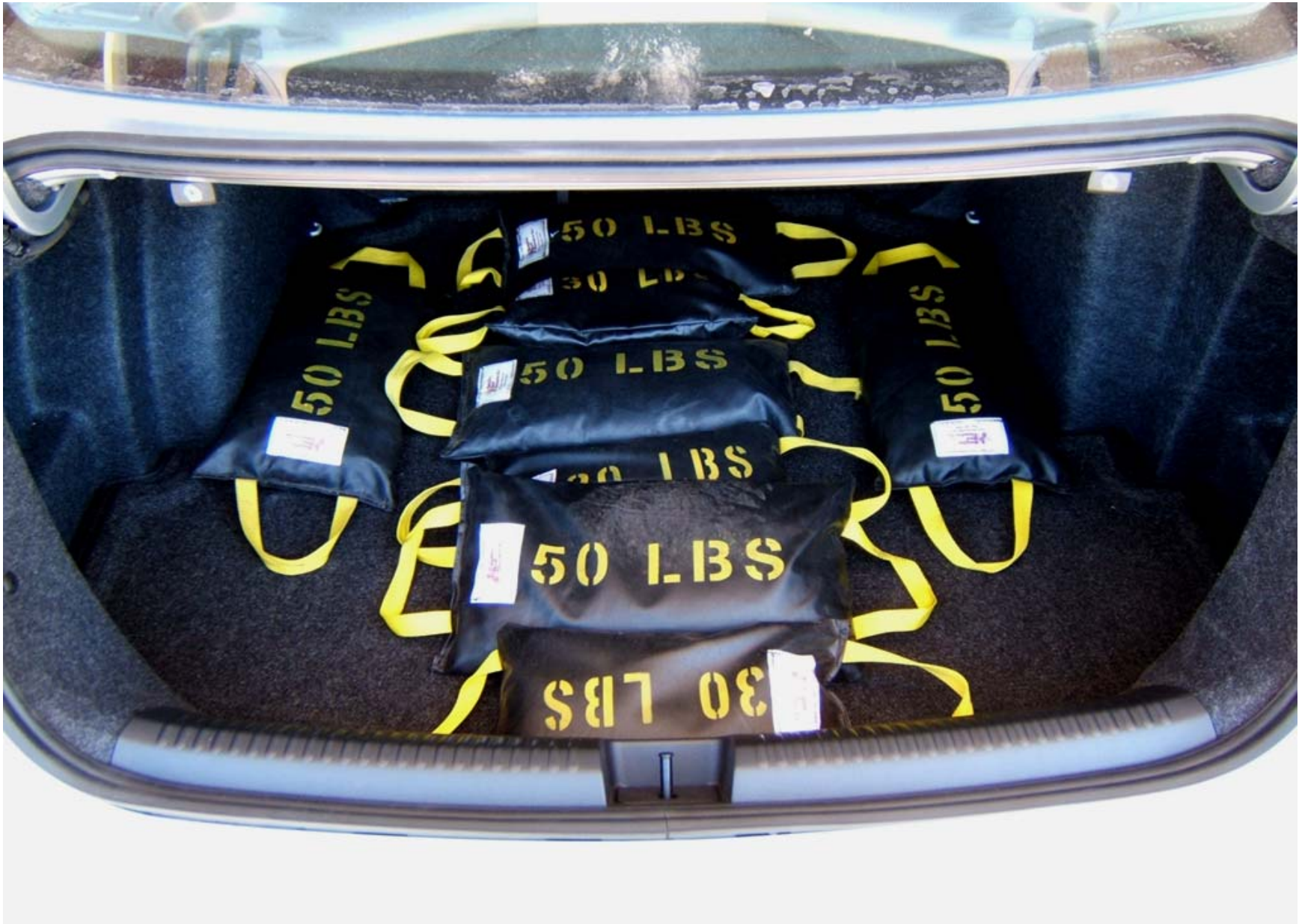
2011 VOLKSWAGEN JETTA
NHTSA NO. CB5800
FMVSS NO. 110

FIGURE 5.13
VEHICLE REAR SEAT BALLASTED
FOR NORMAL LOAD



2011 VOLKSWAGEN JETTA
NHTSA NO. CB5800
FMVSS NO. 110

FIGURE 5.14
VEHICLE REAR SEAT BALLASTED
FOR FULL AND MAXIMUM LOADS



2011 VOLKSWAGEN JETTA
NHTSA NO. CB5800
FMVSS NO. 110

FIGURE 5.15
VEHICLE TRUNK
BALLASTED FOR MAXIMUM LOAD



2011 VOLKSWAGEN JETTA
NHTSA NO. CB5800
FMVSS NO. 110

FIGURE 5.16
VEHICLE ON WEIGHT SCALES